

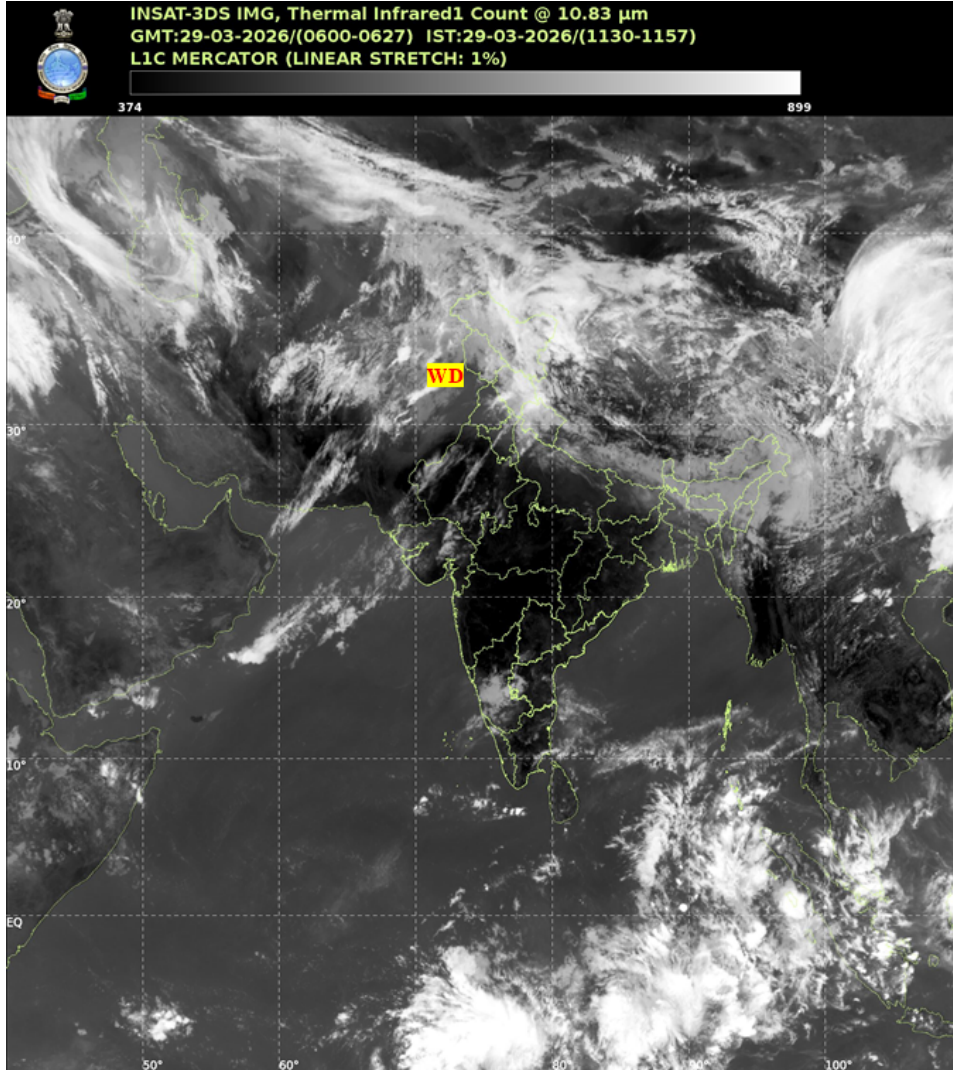


भारत मौसम विज्ञान विभाग
पृथ्वी विज्ञान मंत्रालय
India Meteorological Department
Ministry of Earth Sciences



SATELLITE BULLETIN BASED ON SATELLITE IMAGERIES AND PRODUCTS

Date: 2026-03-29 Time: 06:00:00 UTC



TCIN50 DEMS 290600

SATELLITE BULLETIN BASED ON INSAT-3DS PIC OF 290600 UTC (.)

REGION COVERED BETWEEN LAT 50.0°N TO 35.0°S AND LONG 40.0°E TO 125.0°E (.)

SALIENT FEATURES:

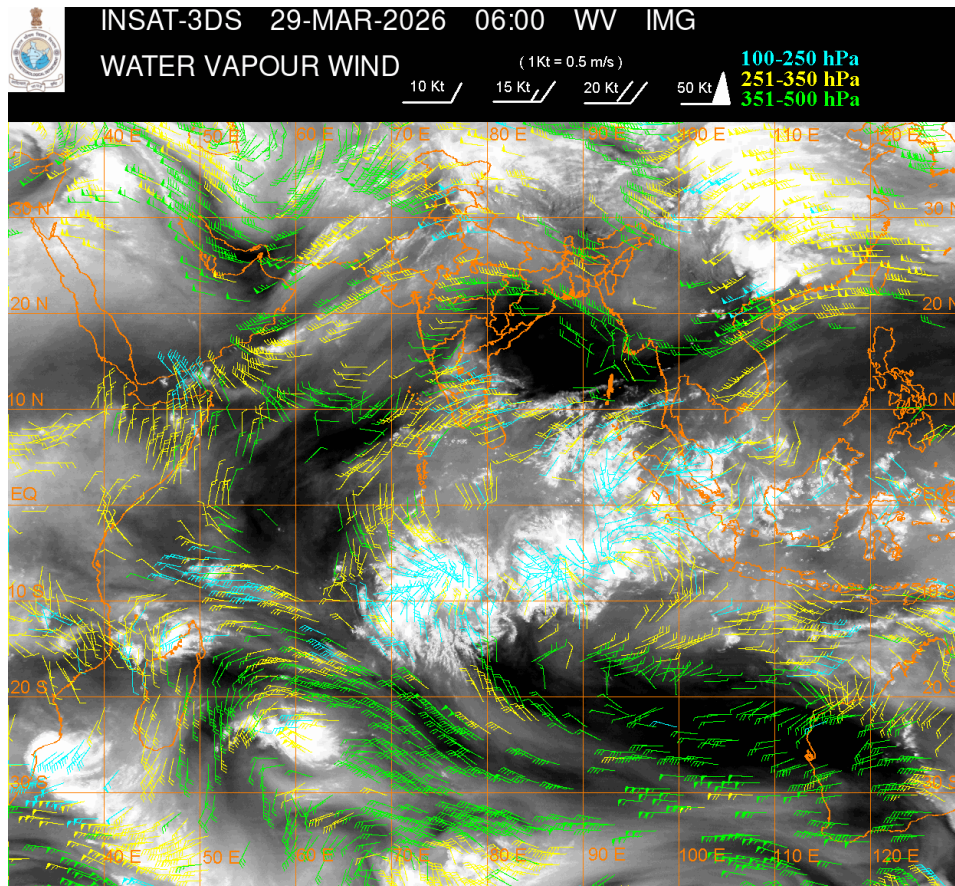
WESTERN DISTURBANCE (WD):-

SCT TO BKN MULTILAYERED CLOUDS OVER EAST IRAN AFGAN PAK LADAKH J&K HP UTRKND PJB HARY ADJ NW UP RAJ GUJ IN ASSW WD OVER THE AREA (.)

CONVECTIVE / THUNDERSTORM ACTIVITY:-

MODERATE TO INTENSE CONVECTIVE / THUNDERSTORM ACTIVITY OBSERVED OVER LADAKH J&K

HP UTRKND PJB N HARY NW UP & NICOBAR ILS (MINIMUM CTT MINUS 40-70 DEGREE CEL) (.)



CLOUD DESCRIPTION WITHIN INDIA:

NORTH:

SCT TO BKN LOW/MED CLOUDS WITH EMBDD MOD TO INT CONVTN OVER LADAKH J&K HP UTRKND N PJB N HARY ADJ NW UP (.) SCT LOW/MED CLOUDS OVER S PJB S HARY DLH REST UP (.)

EAST:

SCT LOW/MED CLOUDS WITH EMBDD WK TO MOD CONVTN OVER SHWB SKM NORTH-EAST STATES & N BD (.) SCT LOW/MED CLOUDS OVER BHR JHRKND S CHTGH ORS GWB (.)

WEST:

SCT LOW/MED CLOUDS WITH EMBDD ISOL WK TO MOD CONVTN OVER RAJ N GUJ (.) SCT LOW/MED CLOUDS OVER S GUJ MP SOUTH MADHYA MAHA KKN & GOA (.)

SOUTH:

SCT TO BKN LOW/MED CLOUDS WITH EMBDD MOD TO INT CONVTN OVER NICOBAR ILS AREA AND WK TO MOD CONVTN OVER KRNTK RYLSM S COTL AP N KER TN & ANDAMAN ILS AREA (.) SCT LOW/MED CLOUDS OVER TLNGN N COTL AP (.)

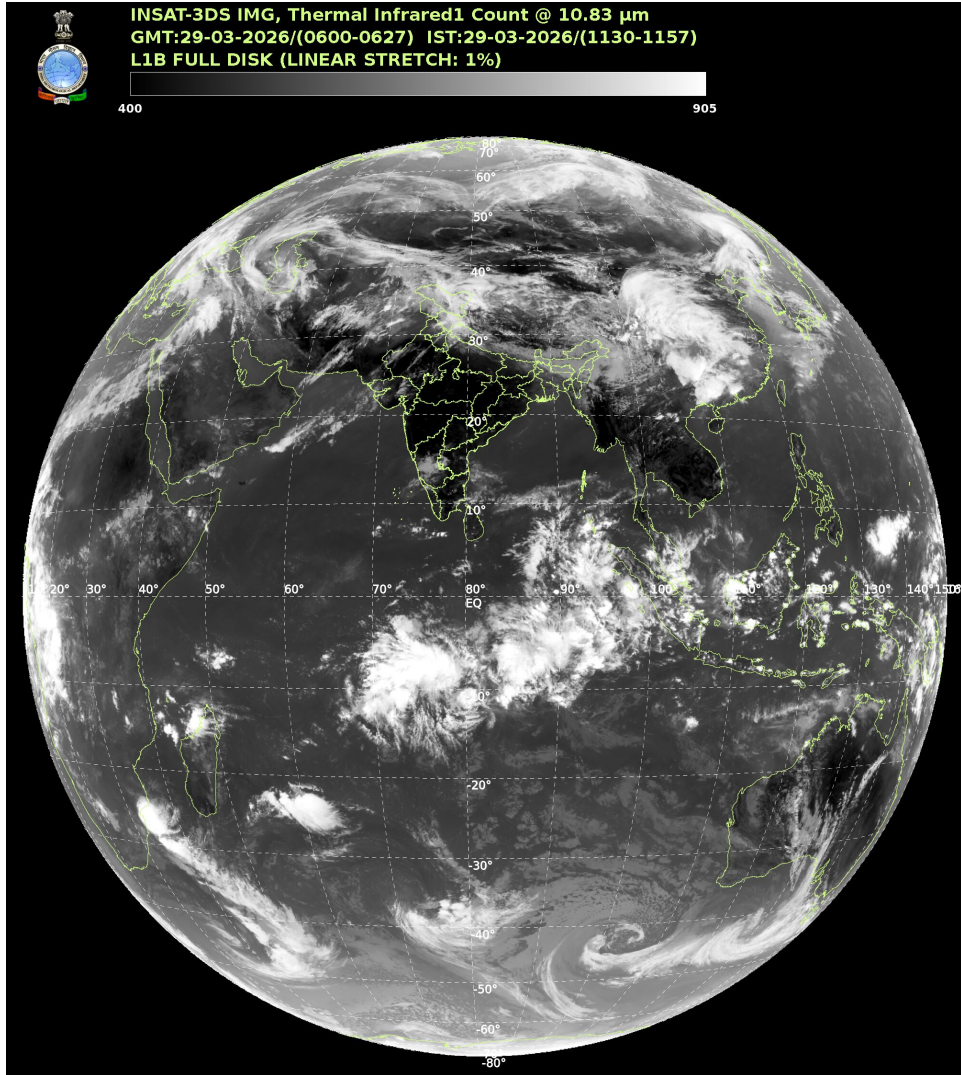
ARABIAN SEA:

SCT LOW/MED CLOUDS WITH EMBDD MOD TO INT CONVTN OVER NORTH & WC ARSEA SE ARSEA & LKSDP ILS AREA (.)

BAY OF BENGAL & ANDAMAN SEA:

SCT LOW/MED CLOUDS WITH EMBDD MOD TO INT CONVTN OVER SOUTH BAY SOUTH ANDAMAN SEA AND ISOL WK TO MOD CONVTN OVER WC BAY NORTH ANDAMAN SEA (.)

CLOUD DESCRIPTION OUTSIDE INDIA:



SCT LOW/MED CLOUDS WITH EMBDD MOD TO INT CONVTN OVER NORTH SRI LANKA PALK STR MALDIVES AREA PAK NEPAL BHUTAN TIBET CHINA YELLOW SEA EAST CHINA SEA NORTH MYANMAR NORTH VIETNAM SUMATRA STR OF MALACCA MALAYSIA BORNEO SOUTH CHINA SEA CELEBES ILS & SEA MADAGASCAR MOZAMBIQUE CHANNEL AND OVER INDIAN OCEAN BET LAT 5.0N TO LAT 20.0S LONG 40.0E TO 120.0E AND BET LAT 20.0S TO LAT 35.0S LONG 40.0E TO 90.0E (.)

T00 29/1215 HRS IST

NNNN

LEGEND

| REGION | |
|--------------------|---|
| NORTH | J&K HP UTRKND PJB HARY DLH UP |
| EAST | BHR JHRKND CHTGH ORS WB SKM NORTH-EAST STATES |
| WEST | RAJ MP GUJ MAHA GOA |
| SOUTH | TLNGN AP KRNTK KER TN LKSDP ANDAMAN & NICOBAR ILS |
| CLOUD DISTRIBUTION | |
| ISOL | ISOLATED (LESS THAN 25%) |
| SCT | SCATTERED (25 TO 50%) |

| | |
|---|---|
| BKN | BROKEN (51 TO 75%) |
| SLD | SOLID (GREATER THAN 75%) |
| CLOUDS TOP TEMPERATURE | |
| CTT | CLOUD TOP TEMPERATURE |
| CONVECTION | |
| WK CONVTN | WEAK CONVECTION (CTT GREATER THAN -25°C) |
| MOD CONVTN | MODERATE CONVECTION (CTT BETWEEN -25°C TO -40°C) |
| INT CONVTN | INTENSE CONVECTION (CTT BETWEEN -41°C TO -70°C) |
| V INT CONVTN | VERY INTENSE CONVECTION (CTT LESS THAN -70°C) |
| METEOROLOGICAL SUB-DIVISIONS, STATES & UNION TERRITORIES | |
| J&K | JAMMU AND KASHMIR |
| HP | HIMACHAL PRADESH |
| UTRKND | UTTARAKHAND |
| PJB | PUNJAB |
| HARY | HARYANA |
| DLH | DELHI |
| BHR | BIHAR |
| JHRKND | JHARKHAND |
| CHTGH | CHHATTISGARH |
| ORS | ORISSA |
| GWB | GANGETIC WEST BENGAL |
| SHWB | SUB-HIMALAYAN WEST BENGAL |
| SKM | SIKKIM |
| ARUPR | ARUNACHAL PRADESH |
| ASSAM | ASSAM |
| MEGHA | MEGHALAYA |
| MANI | MANIPUR |
| MIZO | MIZORAM |
| TRP | TRIPURA |
| RAJ | RAJASTHAN |
| MP | MADHYA PRADESH |
| GUJ | GUJARAT |
| SAU & KUTCH | SAURASHTRA & KUTCH |
| MAHA | MAHARASHTRA |

| | |
|----------------------|---------------------------------|
| M MAHA | MADHYA MAHARASHTRA |
| MRTHWD | MARATHWADA |
| VID | VIDARBHA |
| KKN | KONKAN |
| TLNGN | TELANGANA |
| RYLSM | RAYALSEEMA |
| COTL AP | COASTAL ANDHRA PRADESH |
| NIK | NORTH INTERIOR KARNATAKA |
| SIK | SOUTH INTERIOR KARNATAKA |
| COTL KRNTK | COASTAL KARNATAKA |
| KER | KERALA |
| TN | TAMILNADU |
| LKSDP | LAKSHADWEEP |
| ILS | ISLANDS |
| ARSEA | ARABIAN SEA |
| MISCELLANEOUS | |
| ASSW | IN ASSOCIATION WITH |
| ASSTD | ASSOCIATED |
| LLC | LOW LEVEL CIRCULATION |
| EMBDD | EMBEDDED |
| N/HOOD | NEIGHBOURHOOD |
| EXT | EXTREME |