

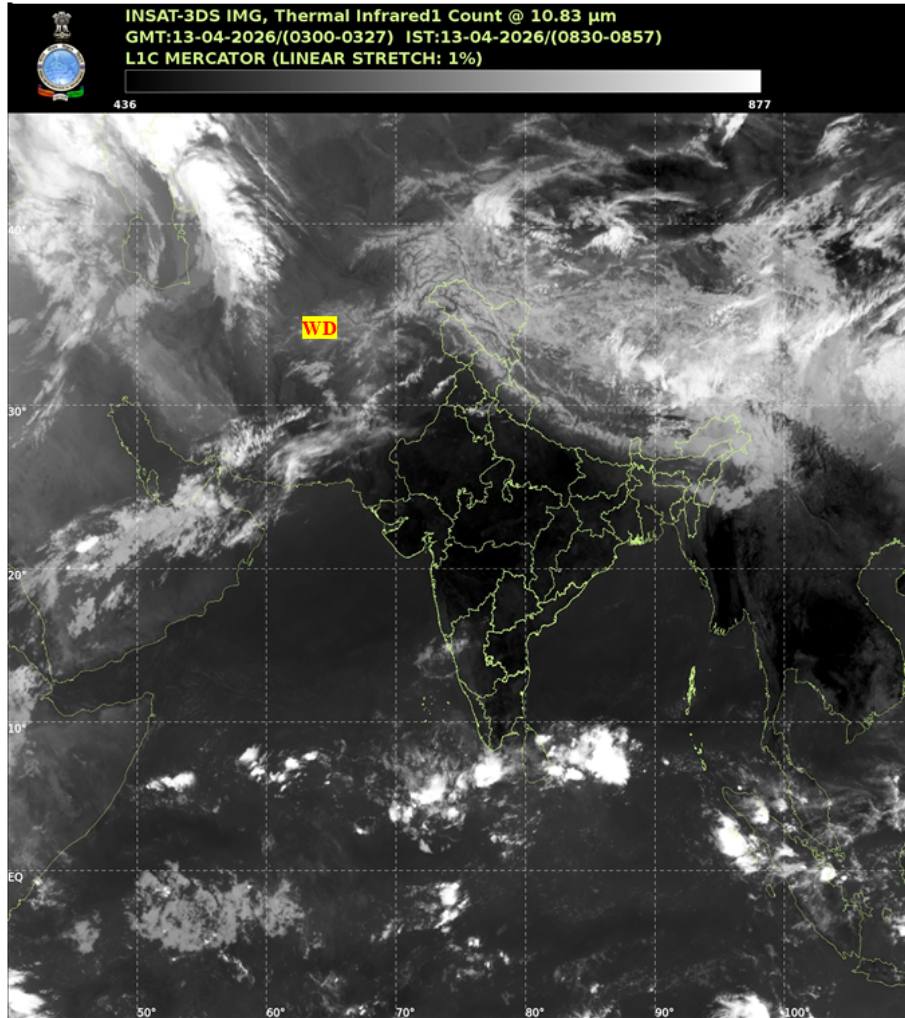


भारत मौसम विज्ञान विभाग  
पृथ्वी विज्ञान मंत्रालय  
India Meteorological Department  
Ministry of Earth Sciences



**SATELLITE BULLETIN BASED ON SATELLITE IMAGERIES AND PRODUCTS**

Date: 2026-04-13 Time: 03:00:00 UTC



TCIN50 DEMS 130300

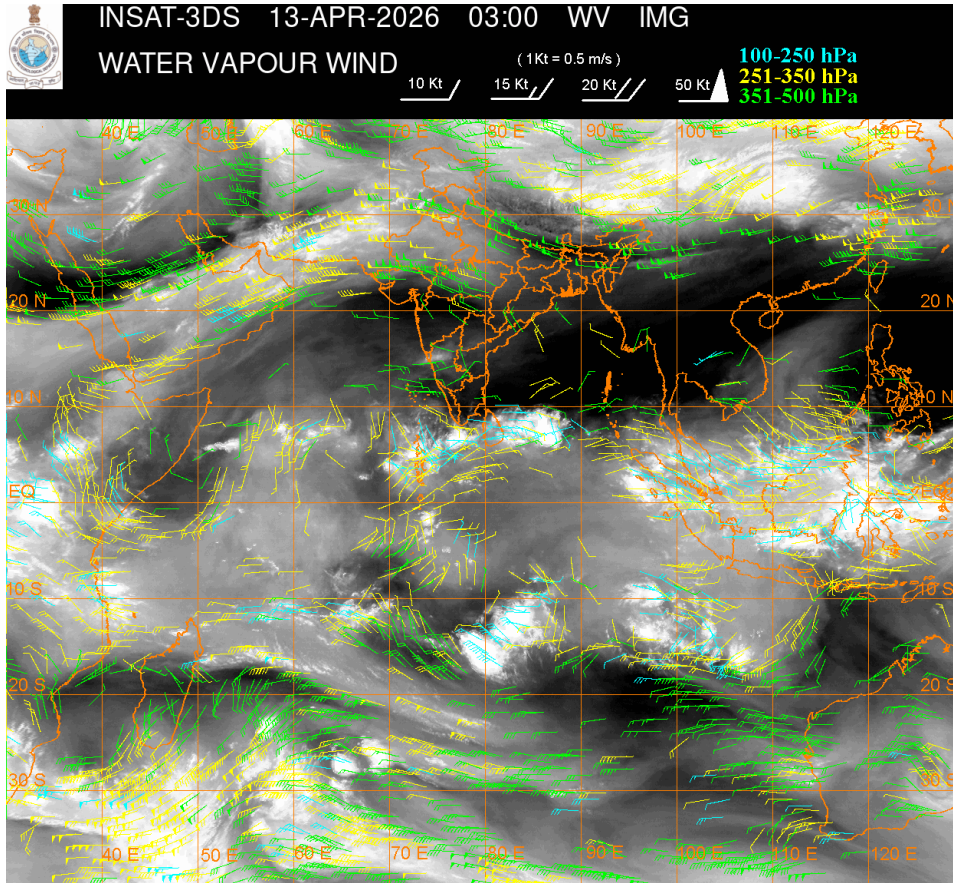
SATELLITE BULLETIN BASED ON INSAT-3DS PIC OF 130300 UTC (.)

REGION COVERED BETWEEN LAT 50.0°N TO 35.0°S AND LONG 40.0°E TO 125.0°E (.)

**SALIENT FEATURES:**

**WESTERN DISTURBANCE (WD):-**

SCT MULTILAYERED CLOUDS OVER IRAQ IRAN PERSIAN GULF AFGAN PAK AND N/HOOD IN ASSW  
WD OVER THE AREA (.)



**CLOUD DESCRIPTION WITHIN INDIA:**

**NORTH:**

SCT LOW/MED CLOUDS WITH EMBDD ISOL WK TO MOD CONVTN OVER LADAKH NE HARY N PJB (.) ISOL TO SCT LOW/MED CLOUDS OVER J&K HP UTRKND S PJB (.)

**EAST:**

SCT LOW/MED CLOUDS WITH EMBDD WK TO MOD CONVTN OVER NORTH SHWB SKM NE STATES (.)

**WEST:**

SCT LOW/MED CLOUDS WITH EMBDD WK TO MOD CONVTN OVER EXT NW RAJ GOA (.)

**SOUTH:**

SCT LOW/MED CLOUDS WITH EMBDD MOD TO INT CONVTN OVER EXT S TN (.) ISOL TO SCT LOW/MED CLOUDS OVER NIK S KER TN N LKSDP ILS AREA (.)

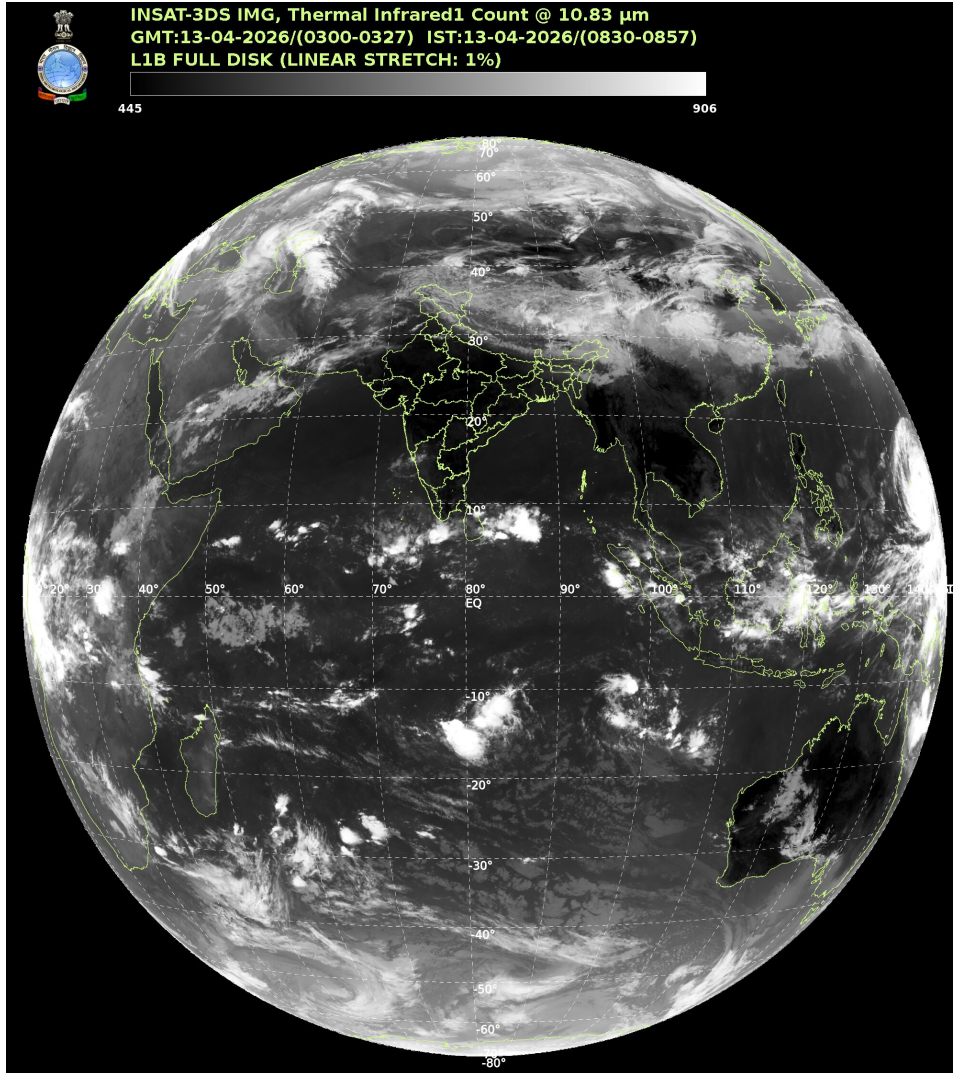
**ARABIAN SEA:**

SCT LOW/MED CLOUDS WITH EMBDD ISOL MOD TO INT CONVTN OVER NW ARSEA SOUTH ARSEA SOUTH OF LAT 10.0N AND COMORIN AREA (.)

**BAY OF BENGAL & ANDAMAN SEA:**

SCT LOW/MED CLOUDS WITH EMBDD MOD TO INT CONVTN OVER SOUTH BAY SOUTH OF LAT 8.0N (.)

**CLOUD DESCRIPTION OUTSIDE INDIA:**



**SCT LOW/MED CLOUDS WITH EMBDD MOD TO INT CONVTN OVER SRI LANKA BHUTAN TIBET CHINA NORTH MYANMAR YELLOW SEA ADJ EAST CHINA SEA SUMATRA STR OF MALACCA MALAYSIA BORNEO SOUTH CHINA SEA JAVA ILS & SEA CELEBES ILS & SEA PHILIPPINES SULU SEA MADAGASCAR NORTH MOZAMBIQUE CHANNEL AND OVER INDIAN OCEAN BET LAT 5.0N TO 30.0S LONG 40.0E TO 110.0E (.)**

**T00 13/0930 HRS IST**

**NNNN**

**LEGEND**

| REGION             |   |
|--------------------|---|
| NORTH              | J&K HP UTRKND PJB HARY DLH UP                     |
| EAST               | BHR JHRKND CHTGH ORS WB SKM NORTH-EAST STATES     |
| WEST               | RAJ MP GUJ MAHA GOA                               |
| SOUTH              | TLNGN AP KRNTK KER TN LKSDP ANDAMAN & NICOBAR ILS |
| CLOUD DISTRIBUTION |   |
| ISOL               | ISOLATED (LESS THAN 25%)                          |
| SCT                | SCATTERED (25 TO 50%)                             |

|   |   |
|---|---|
| <b>BKN</b>  | <b>BROKEN (51 TO 75%)</b>                               |
| <b>SLD</b>  | <b>SOLID (GREATER THAN 75%)</b>                         |
| <b>CLOUDS TOP TEMPERATURE</b>                                       |   |
| <b>CTT</b>  | <b>CLOUD TOP TEMPERATURE</b>                            |
| <b>CONVECTION</b>   |   |
| <b>WK CONVTN</b>  | <b>WEAK CONVECTION (CTT GREATER THAN -25°C)</b>         |
| <b>MOD CONVTN</b>   | <b>MODERATE CONVECTION (CTT BETWEEN -25°C TO -40°C)</b> |
| <b>INT CONVTN</b>   | <b>INTENSE CONVECTION (CTT BETWEEN -41°C TO -70°C)</b>  |
| <b>V INT CONVTN</b>   | <b>VERY INTENSE CONVECTION (CTT LESS THAN -70°C)</b>    |
| <b>METEOROLOGICAL SUB-DIVISIONS, STATES &amp; UNION TERRITORIES</b> |   |
| <b>J&amp;K</b>  | <b>JAMMU AND KASHMIR</b>                                |
| <b>HP</b>   | <b>HIMACHAL PRADESH</b>                                 |
| <b>UTRKND</b>   | <b>UTTARAKHAND</b>                                      |
| <b>PJB</b>  | <b>PUNJAB</b>   |
| <b>HARY</b>   | <b>HARYANA</b>  |
| <b>DLH</b>  | <b>DELHI</b>  |
| <b>BHR</b>  | <b>BIHAR</b>  |
| <b>JHRKND</b>   | <b>JHARKHAND</b>  |
| <b>CHTGH</b>  | <b>CHHATTISGARH</b>                                     |
| <b>ORS</b>  | <b>ORISSA</b>   |
| <b>GWB</b>  | <b>GANGETIC WEST BENGAL</b>                             |
| <b>SHWB</b>   | <b>SUB-HIMALAYAN WEST BENGAL</b>                        |
| <b>SKM</b>  | <b>SIKKIM</b>   |
| <b>ARUPR</b>  | <b>ARUNACHAL PRADESH</b>                                |
| <b>ASSAM</b>  | <b>ASSAM</b>  |
| <b>MEGHA</b>  | <b>MEGHALAYA</b>  |
| <b>MANI</b>   | <b>MANIPUR</b>  |
| <b>MIZO</b>   | <b>MIZORAM</b>  |
| <b>TRP</b>  | <b>TRIPURA</b>  |
| <b>RAJ</b>  | <b>RAJASTHAN</b>  |
| <b>MP</b>   | <b>MADHYA PRADESH</b>                                   |
| <b>GUJ</b>  | <b>GUJARAT</b>  |
| <b>SAU &amp; KUTCH</b>  | <b>SAURASHTRA &amp; KUTCH</b>                           |
| <b>MAHA</b>   | <b>MAHARASHTRA</b>                                      |

|                      |                                 |
|----------------------|---------------------------------|
| <b>M MAHA</b>        | <b>MADHYA MAHARASHTRA</b>       |
| <b>MRTHWD</b>        | <b>MARATHWADA</b>               |
| <b>VID</b>           | <b>VIDARBHA</b>                 |
| <b>KKN</b>           | <b>KONKAN</b>                   |
| <b>TLNGN</b>         | <b>TELANGANA</b>                |
| <b>RYLSM</b>         | <b>RAYALSEEMA</b>               |
| <b>COTL AP</b>       | <b>COASTAL ANDHRA PRADESH</b>   |
| <b>NIK</b>           | <b>NORTH INTERIOR KARNATAKA</b> |
| <b>SIK</b>           | <b>SOUTH INTERIOR KARNATAKA</b> |
| <b>COTL KRNTK</b>    | <b>COASTAL KARNATAKA</b>        |
| <b>KER</b>           | <b>KERALA</b>                   |
| <b>TN</b>            | <b>TAMILNADU</b>                |
| <b>LKSDP</b>         | <b>LAKSHADWEEP</b>              |
| <b>ILS</b>           | <b>ISLANDS</b>                  |
| <b>ARSEA</b>         | <b>ARABIAN SEA</b>              |
| <b>MISCELLANEOUS</b> |                                 |
| <b>ASSW</b>          | <b>IN ASSOCIATION WITH</b>      |
| <b>ASSTD</b>         | <b>ASSOCIATED</b>               |
| <b>LLC</b>           | <b>LOW LEVEL CIRCULATION</b>    |
| <b>EMBDD</b>         | <b>EMBEDDED</b>                 |
| <b>N/HOOD</b>        | <b>NEIGHBOURHOOD</b>            |
| <b>EXT</b>           | <b>EXTREME</b>                  |