

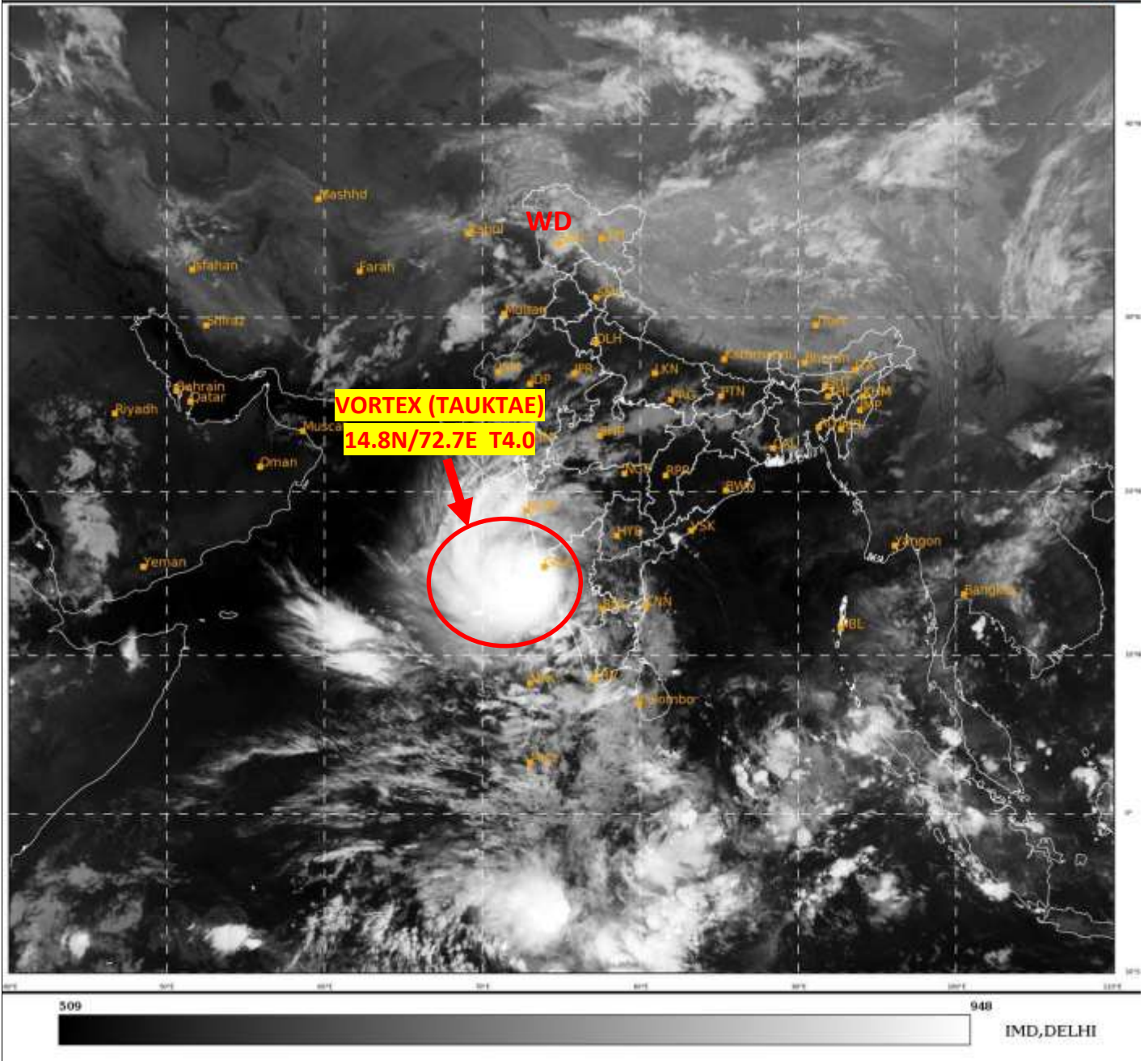


**SATELLITE BULLETIN BASED ON SATELLITE IMAGERIES
AND PRODUCTS**

15.05.2021 TIME 2100 UTC

SAT : INSAT-3D IMG
IMG_TIR1 10.8 um
LIC Mercator

15-05-2021/(2100 to 2126) GMT
16-05-2021/(0230 to 0256) IST



ZCZC 2100

TCIN50 DEMS 152100

SATELLITE BULLETIN BASED ON INSAT-3D PICOV 152100 UTC (.)

REGION COVERED BETWEEN LAT 50.0°N TO 30.0°S AND LONG 40.0°E TO 125.0°E (.)

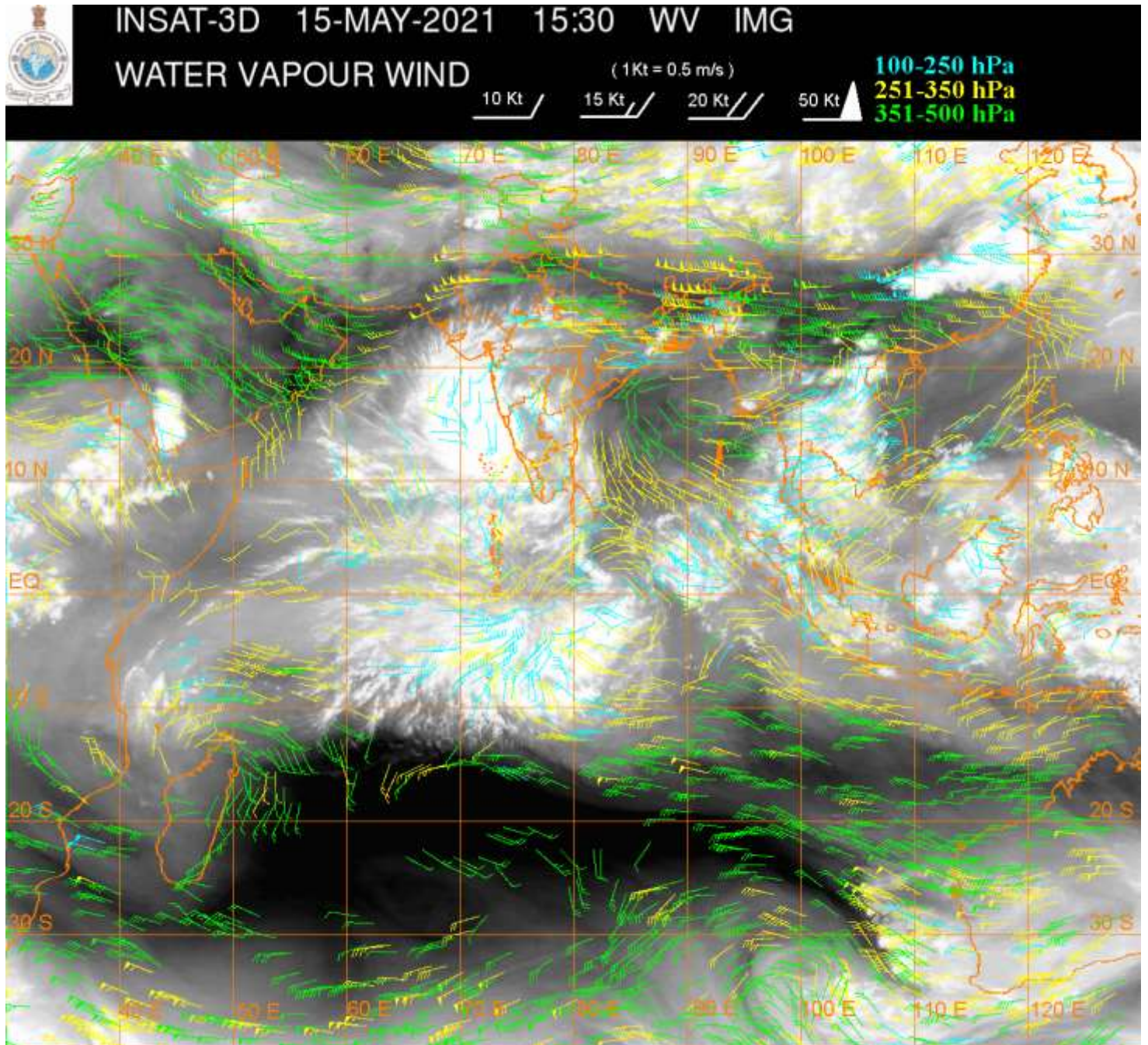
SALIENT FEATURES:-

VORTEX (TAUKTAE) OVER EAST-CENTRAL ARSEA & N/HOOD:-

VORTEX (**TAUKTAE**) OVER EC ARSEA & N/HOOD HAS FURTHER INTENSIFIED AND NOW LAY CENTERED NEAR **14.8N/72.7E** (.) INTENSITY **T4.0** RPT **T4.0** (.) CDO PATTERN (.) INTENSE CONVECTION IS MORE ORGANISED OVER THE CENTRE (.) ASSTD BKN LOW/MED CLOUDS WITH EMBDD INT TO V INT CONV'TN OVER EC ARSEA BET LAT 12.0N TO 20.0N AND EAST OF LONG 67.0E ALSO OVER KONKAN GOA & COASTAL KARNATAKA (.) MINIMUM CTT MINUS 93 DEG C (.)

WESTERN DISTURBANCE (WD):-

SCT MULTILAYERED CLOUDS OVER N PAK J&K LADAKH TIBET ADJ CHINAIN ASSW WD OVER THE AREA (.)



CLOUDS DESCRIPTION WITHIN INDIA:-

NORTH:-

SCT LOW/MED CLOUDS WITH EMBDD MOD TO INT CONVTN OVER J&K W LADAKH (.) SCT LOW/MED CLOUDS WITH EMBDD ISOL WK TO MOD CONVTN OVER E LADAKH N HP N UTRKND S UP (.) SCT LOW/MED CLOUDS OVER N PJB NE UP (.)

EAST:-

SCT LOW/MED CLOUDS WITH EMBDD ISOL WK TO MOD CONVTN OVER EXT N CHTGH N JHRKND S BHR GWB SKM ARUPR N ASSAM & SW BD (.) SCT LOW/MED CLOUDS OVER ORS N BHR SHWB REST NE STATES (.)

WEST:-

BKN LOW/MED CLOUDS WITH EMBDD INT TO V INT CONVTN OVER S KKN & GOA (MINIMUM CTT MINUS 93 DEG C) (.) SCT LOW/MED CLOUDS WITH EMBDD MOD TO INT CONVTN OVER GUJ SW MP N KKN MADHYA MAHA MRTHWD (.) SCT LOW/MED CLOUDS WITH EMBDD ISOL WK TO MOD CONVTN OVER RAJ REST MP W VID (.) SCT LOW/MED CLOUDS OVER E VID (.)

SOUTH:-

BKN LOW/MED CLOUDS WITH EMBDD INT TO V INT CONVTN OVER COTL KRNTK (MINIMUM CTT MINUS 93 DEG C) N KER LKSDP (MINIMUM CTT MINUS 70 DEG C) (.) SCT LOW/MED CLOUDS WITH EMBDD MOD TO INT CONVTN OVER N COTL AP REST KRNTK S KER TN AND ISOL WK TO MOD CONVTN OVER TLNGN RYLSM S COTL AP & NICOBAR ILS (.) SCT LOW/MED CLOUDS OVER ANDAMAN ILS (.)

ARABIAN SEA:-

BKN LOW/MED CLOUDS WITH EMBDD INT TO V INT CONVTN OVER EC ARSEA BET LAT 12.0N TO 20.0N AND EAST OF LONG 67.0E ALSO OVER KKN GOA & COASTAL KARNATAKA (MINIMUM CTT MINUS 93 DEG C (.)

SCT LOW/MED CLOUDS WITH EMBDD MOD TO INT CONVTN OVER S ARSEA EAST OF LONG 58.0E LAKSKADWEEP & COMORIN (.)

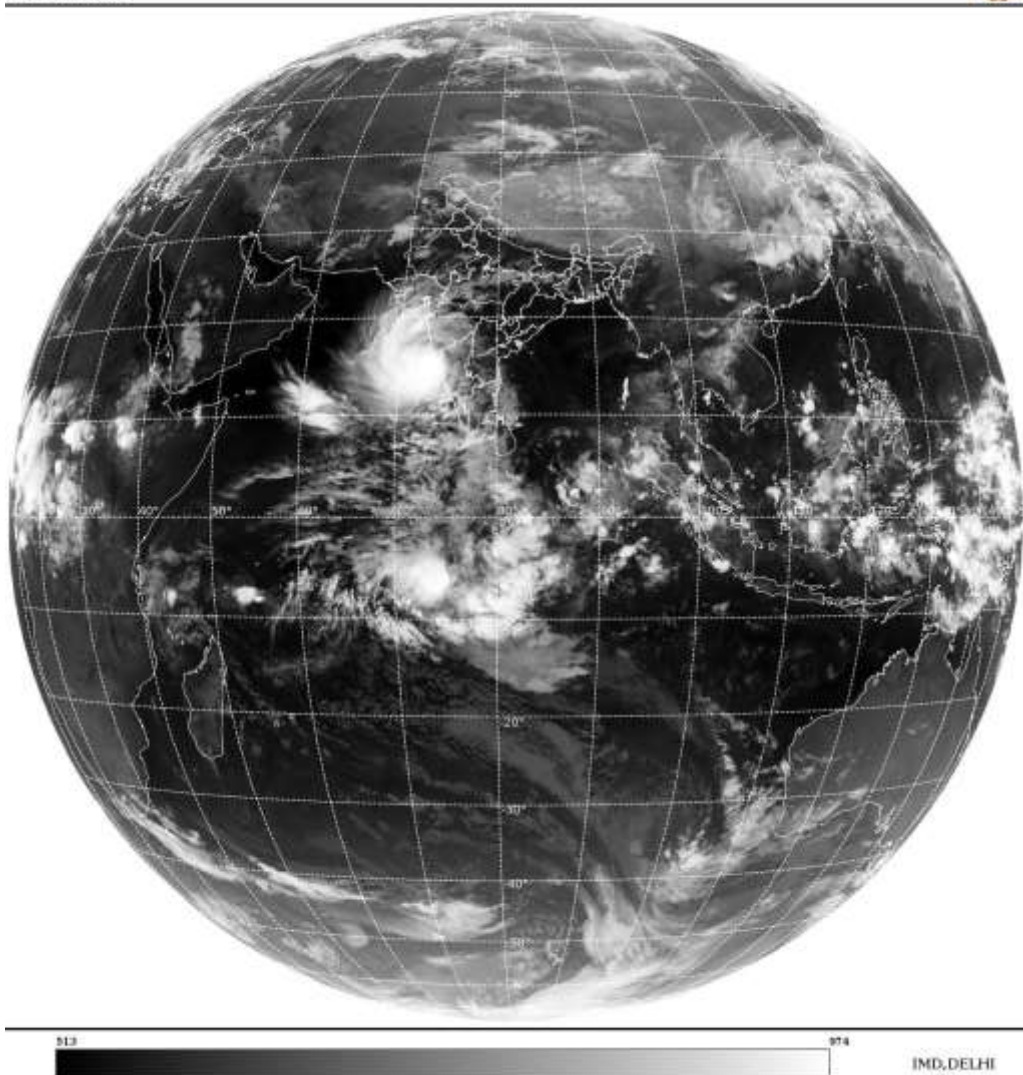
BAY OF BENGAL & ANDAMAN SEA:-

SCT LOW/MED CLOUDS WITH EMBDD MOD TO INT CONVTN OVER S ANDAMAN SEA AND ISOL WK TO MOD CONVTN OVER SW BAY OFF TN COAST (.)

CLOUDS DESCRIPTION OUTSIDE INDIA:-

SAT : INSAT-3D IMG
Thermal Infrared1 Count 10.8 um
LIB FULL DISK

15-05-2021/(2100 to 2126) GMT
16-05-2021/(0230 to 0256) IST



SCT LOW/MED CLOUDS WITH EMBDD MOD TO INT CONVTN OVER MALDIEVES SRILANKA GULF OF MANNAR PALK STR PAK TIBET CHINA N THAILAND W CAMBODIA LAOS N VIETNAM SUMATRA STR OF MALACCA MALAYSIA BORNEO S CHINA SEA CELEBES ILS & SEA PHILIPPINES SULU SEA YELLOW SEA AND OVER INDIAN OCEAN BET LAT 5.0N TO 12.0S LONG 60.0E TO 95.0E (.)

TOO 16/0340EF=

NNNN

LEGEND:-

REGION	NORTH	J&K HP PJB HARY DLH UP UTRKND
	EAST	BHR JHRKND CHTGH ORS WB SKMNORTH-EAST STATES
	WEST	RAJ MP GUJ MAHA GOA
	SOUTH	TLNGN AP KRNTK KER TN LKSDP ANDAMAN & NICOBAR ILS

CLOUD DISTRIBUTION	ISOL	ISOLATED (LESS THAN 25%)
	SCT	SCATTERED (25 TO 50%)
	BKN	BROKEN (51 TO 75%)
	SLD	SOLID (GREATER THAN 75%)
CLOUDS TOP TEMPERATURE	CTT	CLOUD TOP TEMPERATURE
CONVECTION	WK CONVTN	WEAK CONVECTION (CTT GREATER THAN -25°C)
	MOD CONVTN	MODERATE CONVECTION (CTT BETWEEN -25°C TO -40°C)
	INT CONVTN	INTENSE CONVECTION (CTT BETWEEN -41°C TO -70°C)
	V INT CONVTN	VERY INTENSE CONVECTION (CTT LESS THAN -70°C)
METEOROLOGICAL SUB-DIVISIONS, STATES & UNION TERRITORIES	ARUPR	ARUNACHAL PRADESH
	BHR	BIHAR
	CHTGH	CHHATTISGARH
	COTL AP	COASTAL ANDHRA PRADESH
	COTL KRNTK	COASTAL KARNATAKA
	COTL ORS	COASTAL ORISSA
	GUJ	GUJARAT
	GWB	GANGETIC WEST BENGAL
	HARY	HARYANA
	DLH	DELHI
	HP	HIMACHAL PRADESH
	J&K	JAMMU AND KASHMIR
	JHRKND	JHARKHAND
	KER	KERALA
	KKN	KONKAN
	LKSDP	LAKSHADWEEP
	M MAHA	MADHYA MAHARASHTRA
	MAHA	MAHARASHTRA
	MANI	MANIPUR
	MEGHA	MEGHALAYA

	MIZO	MIZORAM
	MP	MADHYA PRADESH
	MRTHWD	MARATHWADA
	NAGA	NAGALAND
	N COTL AP	NORTH COASTAL ANDHRA PRADESH
	NIK	NORTH INTERIOR KARNATAKA
	ORS	ORISSA
	PJB	PUNJAB
	RAJ	RAJASTHAN
	RYLSM	RAYALASEEMA
	SAU & KUTCH	SAURASHTRA & KUTCH
	SHWB	SUB-HIMALAYAN WEST BENGAL
	SIK	SOUTH INTERIOR KARNATAKA
	SKM	SIKKIM
	TLNGN	TELANGANA
	TN	TAMIL NADU
	TRP	TRIPURA
	UP	UTTAR PRADESH
	UTRKN	UTTARAKHAND
	VID	VIDHARBHA
	SHWB	SUB HIMALAYAN WEST BENGAL
	GWB	GANGETIC WEST BENGAL
	ARSEA	ARABIAN SEA
	ILS	ISLANDS
MISCELLANEOUS	ASSW	IN ASSOCIATION WITH
	ASSTD	ASSOCIATED
	LLC	LOW LEVEL CIRCULATION
	EMBDD	EMBEDDED
	N/HOOD	NEIGHBOURHOOD
	EXT	EXTREME