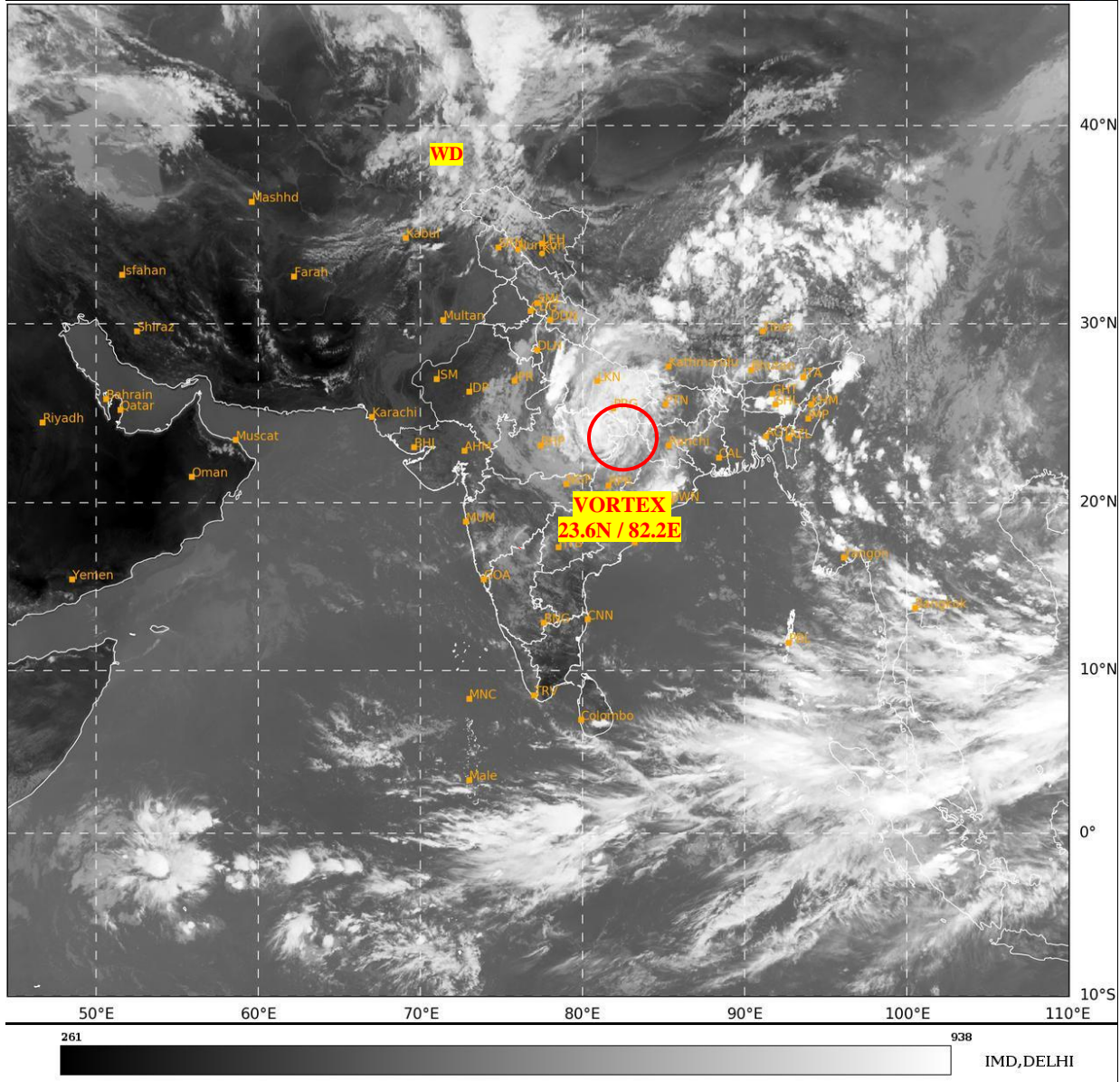




**SATELLITE BULLETIN BASED ON SATELLITE  
IMAGERIES AND PRODUCTS**  
**17.09.2024 TIME 0900 UTC**

SAT : INSAT-3DR IMG  
IMG\_TIR1 10.8 um  
LIC Mercator

17-09-2024/(0845 to 0912) GMT  
17-09-2024/(1415 to 1442) IST



TCIN50 DEMS 170900

SATELLITE BULLETIN BASED ON INSAT-3DR PIC OF 170845 UTC (.)

REGION COVERED BETWEEN LAT 50.0°N TO 35.0°S AND LONG 40.0°E TO 125.0°E (.)

**SALIENT FEATURES:-**

**VORTEX OVER NORTH CHHATTISGARH ADJ NORTH EAST MP & N/HOOD:-**

VORTEX OVER N CHTGH ADJ NORTH EAST MP & N/HOOD CENTERED WITHIN HALF A DEGREE OF **23.6N / 82.2E** (.) ASSTD SCT TO BKN LOW/MED CLOUDS WITH EMBDD INT TO V INT CONVTN OVER W BHR E&C UP E MP JHRKND N CHTGH N ORS W GWB (MINIMUM **CTT MINUS 70-90 DEG CEL**) AND MOD TO INT CONVTN OVER E GWB SHWB N BD (MINIMUM **CTT MINUS 50-70 DEG CEL**) (.)

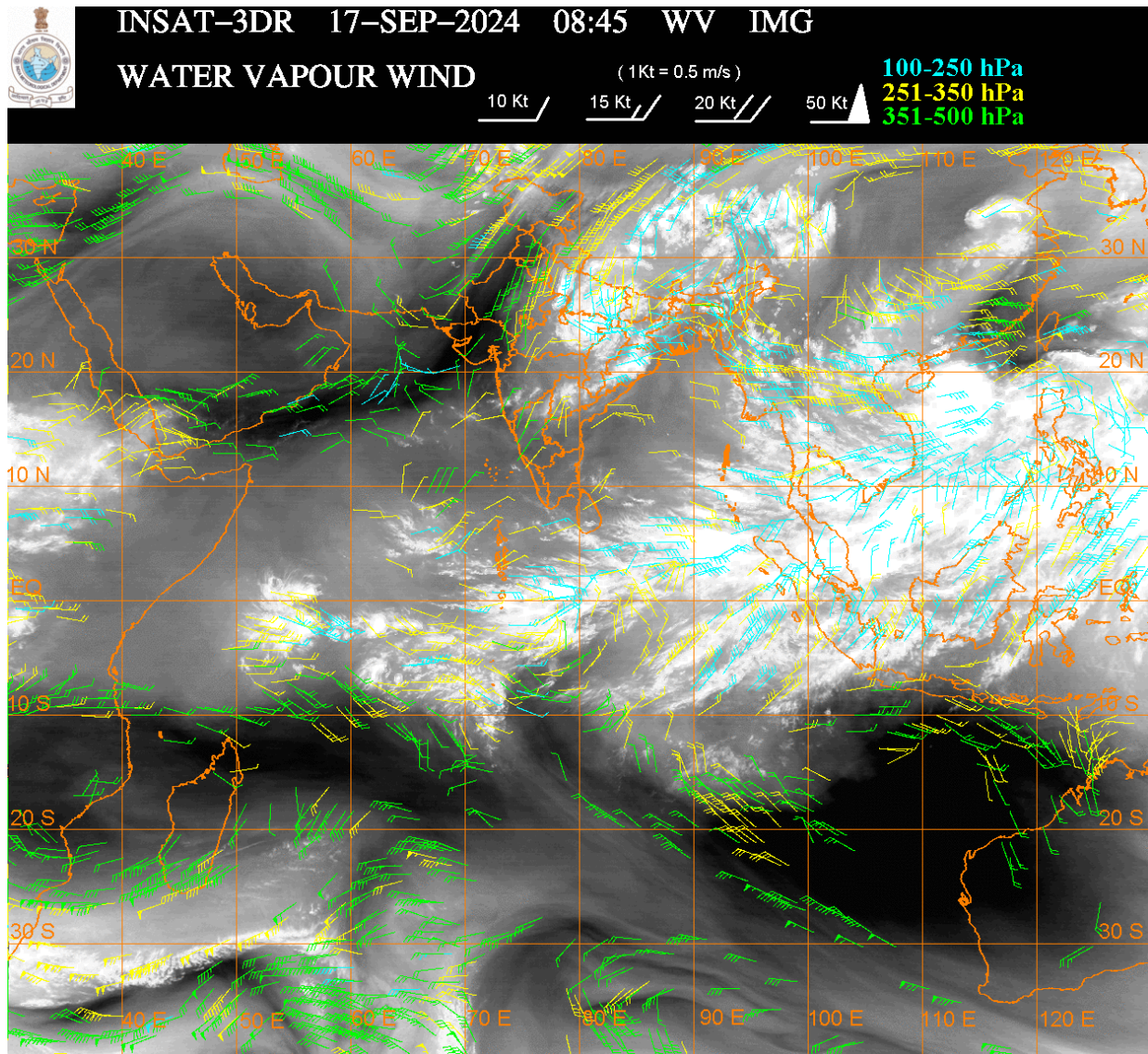
**WESTERN DISTURBANCE (WD):-**

SCT MULTILAYERED CLOUDS OVER E IRAN AFGAN ADJ PAK & N/HOOD IN ASSW **WD** OVER THE AREA (.)

**CONVECTIVE / THUNDERSTORM ACTIVITY:-**

**INTENSE TO VERY INTENSE CONVECTIVE / THUNDERSTORM ACTIVITY OBSERVED OVER UP E MP W BHR W JHRKND N CHTGH N ORS MEGHA NE ASSAM E ARUPR N MIZO TRP (MINIMUM CTT MINUS 70-90 DEG CEL) (.)**

**MODERATE TO INTENSE CONVECTIVE / THUNDERSTORM ACTIVITY OBSERVED OVER LADAKH J&K UTRKND REST MP E BHR E JHRKND GWB SHWB NICOBAR ILS N BD (MINIMUM CTT MINUS 50-70 DEG CEL) (.)**



**CLOUDS DESCRIPTION WITHIN INDIA:-**

**NORTH:-**

**SCT TO BKN LOW/MED CLOUDS WITH EMBDD INT TO V INT CONVTN OVER UP (.) SCT LOW/MED CLOUDS WITH EMBDD ISOL WK TO MOD CONVTN OVER LADAKH J&K HP UTRKND S HARY DLH (.) ISOL TO SCT LOW/MED CLOUDS OVER PJB N HARY (.)**

**EAST:-**

**SCT TO BKN LOW/MED CLOUDS WITH EMBDD INT TO V INT CONVTN OVER W BHR W JHRKND N CHTGH N ORS MEGHA NE ASSAM E ARUPR N MIZO TRP (.) SCT LOW/MED CLOUDS WITH EMBDD MOD TO INT CONVTN OVER E BHR E JHRKND GWB SHWB AND WK TO MOD CONVTN OVER S CHTGH S ORS SKM REST NE STATES (.)**

**WEST:-**

**SCT TO BKN LOW/MED CLOUDS WITH EMBDD INT TO V INT CONVTN OVER E MP (.)SCT LOW/MED CLOUDS WITH EMBDD WK TO MOD CONVTN OVER REST MP E RAJ VID S M MAHA (.) SCT LOW/MED CLOUDS OVER REST RAJ GUJ REST MAHA & GOA (.)**

**SOUTH:-**

**SCT LOW/MED CLOUDS WITH EMBDD INT TO V INT CONVTN OVER NICOBAR ILS (.) SCT LOW/MED CLOUDS WITH EMBDD WK TO MOD CONVTN OVER NIK RYLSM TLNGN COTL AP ANDAMN ILS (.) SCT LOW/MED CLOUDS OVER SIK KER TN LKSDP ILS (.)**

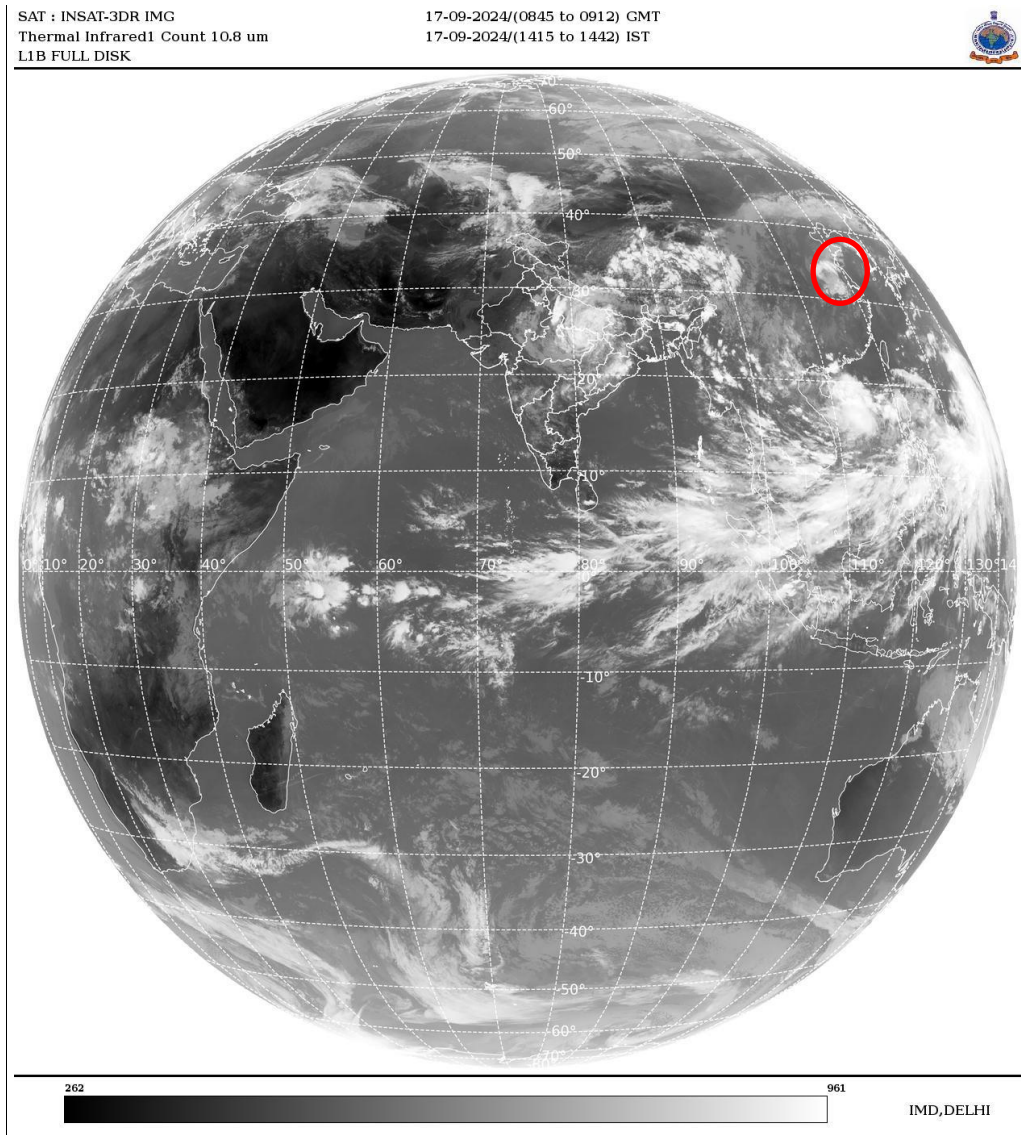
**ARABIAN SEA:-**

SCT LOW/MED CLOUDS WITH EMBDD MOD TO INT CONVTN OVER SE ARSEA AND ISOL WK TO MOD CONVTN OVER EC ARSEA & COMORIN AREA (.)

**BAY OF BENGAL & ANDAMAN SEA:-**

SCT TO BKN LOW/MED CLOUDS WITH EMBDD INT TO V INT CONVTN OVER S BAY ANDAMAN SEA (MINIMUM **CTT MINUS 80-90 DEG CEL**) (.) SCT LOW/MED CLOUDS WITH EMBDD WK TO MOD CONVTN OVER REST BAY (.)

**CLOUDS DESCRIPTION OUTSIDE INDIA:-**



**VORTEX (BEBINCA) OVER EAST CHINA ADJ EAST CHINA SEA:-**

VORTEX (**BEBINCA**) OVER EAST CHINA ADJ EAST CHINA SEA & N/HOOD CENTERED NEAR **33.0 / 116.0E** (.) **OVERLAND** (.) ASSTD SCT TO BKN LOW/MED CLOUDS WITH EMBDD INT TO V INT CONVTN OVER AREA BET LAT 29.0N TO 36.0N AND LONG 115.0E TO 120.0E (.)

SCT LOW/MED CLOUDS WITH EMBDD MOD TO INT CONVTN OVER MALDIVES NEPAL BHUTAN TIBET CHINA YELLOW SEA EAST CHINA SEA TAIWAN MYANMAR THAILAND GULF OF THAILAND CAMBODIA LAOS VIETNAM GULF OF TONKIN HAINAN SUMATRA STR OF MALACCA MALAYSIA BORNEO SOUTH CHINA SEA JAVA ILS & SEA CELEBES ILS & SEA PHILIPPINES SULU SEA AND OVER INDIAN OCEAN BET LAT 5.0N TO 10.0S LONG 50.0E TO 100.0E (.)

TOO 17/1535 HRS IST=

NNNN

**LEGEND:-**

|  |       |                               |
|--|-------|-------------------------------|
|  | NORTH | J&K HP PJB HARY DLH UP UTRKND |
|--|-------|-------------------------------|

|                                                                                  |                     |                                                                  |
|----------------------------------------------------------------------------------|---------------------|------------------------------------------------------------------|
| <b>REGION</b>                                                                    | <b>EAST</b>         | <b>BHR JHRKND CHTGH OR WB SKM<br/>NORTH- EAST STATES</b>         |
|                                                                                  | <b>WEST</b>         | <b>RAJ MP GUJ MAHA GOA</b>                                       |
|                                                                                  | <b>SOUTH</b>        | <b>TLNGN AP KRNTK KER TN LKSDP<br/>ANDAMAN &amp; NICOBAR ILS</b> |
| <b>CLOUD DISTRIBUTION</b>                                                        | <b>ISOL</b>         | <b>ISOLATED (LESS THAN 25%)</b>                                  |
|                                                                                  | <b>SCT</b>          | <b>SCATTERED (25 TO 50%)</b>                                     |
|                                                                                  | <b>BKN</b>          | <b>BROKEN (51 TO 75%)</b>                                        |
|                                                                                  | <b>SLD</b>          | <b>SOLID (GREATER THAN 75%)</b>                                  |
| <b>CLOUDS TOP<br/>TEMPERATURE</b>                                                | <b>CTT</b>          | <b>CLOUD TOP TEMPERATURE</b>                                     |
| <b>CONVECTION</b>                                                                | <b>WK CONVTN</b>    | <b>WEAK CONVECTION<br/>(CTT GREATER THAN -25°C)</b>              |
|                                                                                  | <b>MOD CONVTN</b>   | <b>MODERATE CONVECTION<br/>(CTT BETWEEN -25°C TO -40°C)</b>      |
|                                                                                  | <b>INT CONVTN</b>   | <b>INTENSE CONVECTION<br/>(CTT BETWEEN -41°C TO -70°C)</b>       |
|                                                                                  | <b>V INT CONVTN</b> | <b>VERY INTENSE CONVECTION<br/>(CTT LESS THAN -70°C)</b>         |
| <b>METEOROLOGICAL<br/>SUB- DIVISIONS,<br/>STATES &amp; UNION<br/>TERRITORIES</b> | <b>ARUPR</b>        | <b>ARUNACHAL PRADESH</b>                                         |
|                                                                                  | <b>BHR</b>          | <b>BIHAR</b>                                                     |
|                                                                                  | <b>CHTGH</b>        | <b>CHHATTISGARH</b>                                              |
|                                                                                  | <b>COTL AP</b>      | <b>COASTAL ANDHRA PRADESH</b>                                    |
|                                                                                  | <b>COTL KRNTK</b>   | <b>COASTAL KARNATAKA</b>                                         |
|                                                                                  | <b>COTL ORS</b>     | <b>COASTAL ORISSA</b>                                            |
|                                                                                  | <b>GUJ</b>          | <b>GUJARAT</b>                                                   |
|                                                                                  | <b>GWB</b>          | <b>GANGETIC WEST BENGAL</b>                                      |
|                                                                                  | <b>HARY</b>         | <b>HARYANA</b>                                                   |
|                                                                                  | <b>DLH</b>          | <b>DELHI</b>                                                     |
|                                                                                  | <b>HP</b>           | <b>HIMACHAL PRADESH</b>                                          |
|                                                                                  | <b>J&amp;K</b>      | <b>JAMMU AND KASHMIR</b>                                         |
|                                                                                  | <b>JHRKND</b>       | <b>JHARKHAND</b>                                                 |
|                                                                                  | <b>KER</b>          | <b>KERALA</b>                                                    |
|                                                                                  | <b>KKN</b>          | <b>KONKAN</b>                                                    |
|                                                                                  | <b>LKSDP</b>        | <b>LAKSHADWEEP</b>                                               |
|                                                                                  | <b>M MAHA</b>       | <b>MADHYA MAHARASHTRA</b>                                        |
|                                                                                  | <b>MAHA</b>         | <b>MAHARASHTRA</b>                                               |
|                                                                                  | <b>MANI</b>         | <b>MANIPUR</b>                                                   |
|                                                                                  | <b>MEGHA</b>        | <b>MEGHALAYA</b>                                                 |
|                                                                                  | <b>MIZO</b>         | <b>MIZORAM</b>                                                   |
|                                                                                  | <b>MP</b>           | <b>MADHYA PRADESH</b>                                            |
|                                                                                  |                     | <b>MRTHWD</b>                                                    |
| <b>NAGA</b>                                                                      |                     | <b>NAGALAND</b>                                                  |
| <b>N COTL AP</b>                                                                 |                     | <b>NORTH COASTAL ANDHRA<br/>PRADESH</b>                          |
| <b>NIK</b>                                                                       |                     | <b>NORTH INTERIOR KARNATAKA</b>                                  |
| <b>ORS</b>                                                                       |                     | <b>ORISSA</b>                                                    |
| <b>PJB</b>                                                                       |                     | <b>PUNJAB</b>                                                    |
| <b>RAJ</b>                                                                       |                     | <b>RAJASTHAN</b>                                                 |

|                      |                        |                                  |
|----------------------|------------------------|----------------------------------|
|                      | <b>RYLSM</b>           | <b>RAYALASEEMA</b>               |
|                      | <b>SAU &amp; KUTCH</b> | <b>SAURASHTRA &amp; KUTCH</b>    |
|                      | <b>SHWB</b>            | <b>SUB-HIMALAYAN WEST BENGAL</b> |
|                      | <b>SIK</b>             | <b>SOUTH INTERIOR KARNATAKA</b>  |
|                      | <b>SKM</b>             | <b>SIKKIM</b>                    |
|                      | <b>TLNGN</b>           | <b>TELANGANA</b>                 |
|                      | <b>TN</b>              | <b>TAMIL NADU</b>                |
|                      | <b>TRP</b>             | <b>TRIPURA</b>                   |
|                      | <b>UP</b>              | <b>UTTAR PRADESH</b>             |
|                      | <b>UTRKND</b>          | <b>UTTARAKHAND</b>               |
|                      | <b>VID</b>             | <b>VIDHARBHA</b>                 |
|                      | <b>SHWB</b>            | <b>SUB HIMALAYAN WEST BENGAL</b> |
|                      | <b>GWB</b>             | <b>GANGETIC WEST BENGAL</b>      |
|                      | <b>ARSEA</b>           | <b>ARABIAN SEA</b>               |
|                      | <b>ILS</b>             | <b>ISLANDS</b>                   |
| <b>MISCELLANEOUS</b> | <b>ASSW</b>            | <b>IN ASSOCIATION WITH</b>       |
|                      | <b>ASSTD</b>           | <b>ASSOCIATED</b>                |
|                      | <b>LLC</b>             | <b>LOW LEVEL CIRCULATION</b>     |
|                      | <b>EMBDD</b>           | <b>EMBEDDED</b>                  |
|                      | <b>N/HOOD</b>          | <b>NEIGHBOURHOOD</b>             |
|                      | <b>EXT</b>             | <b>EXTREME</b>                   |