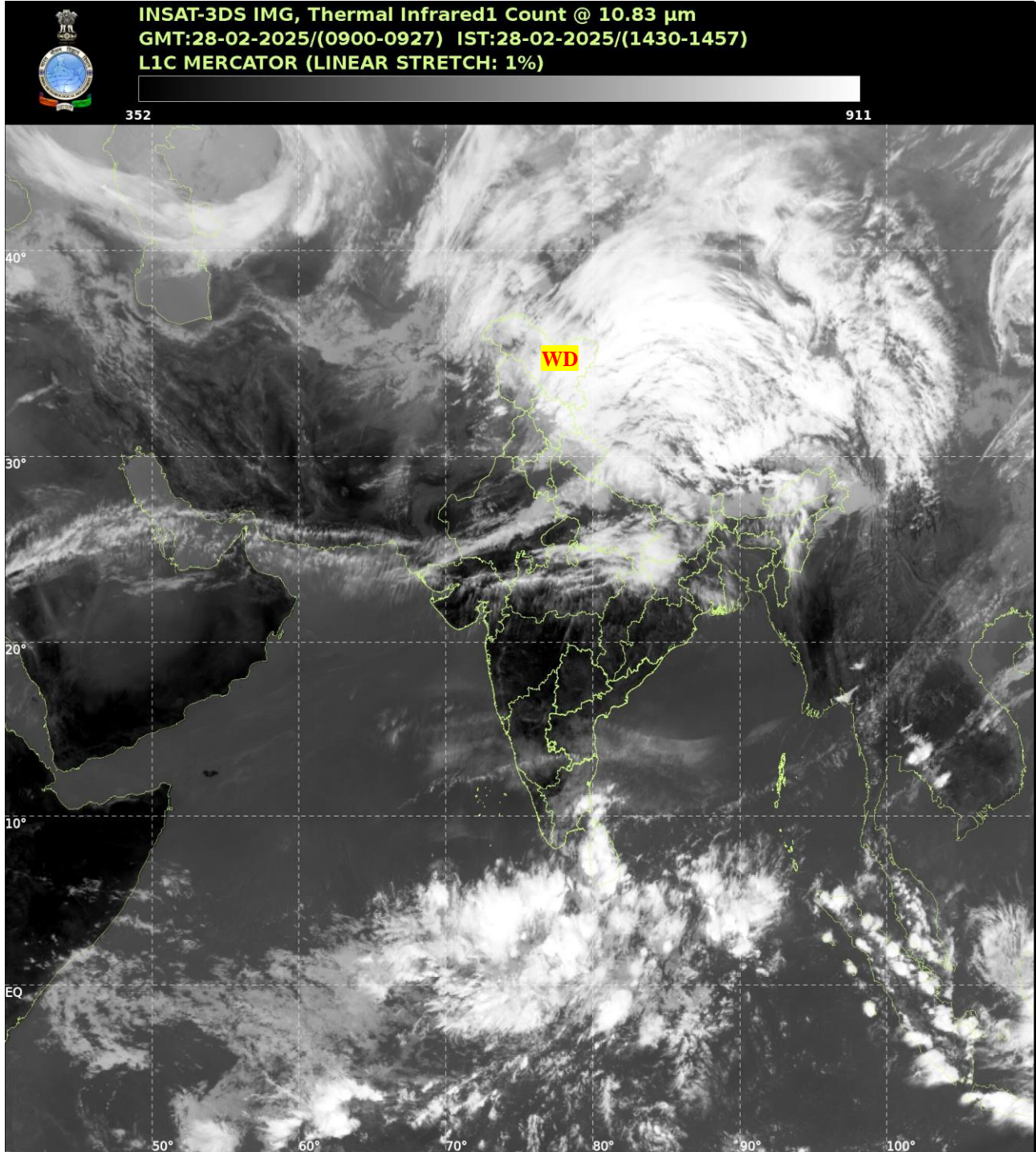




भारत मौसम विज्ञान विभाग
पृथ्वी विज्ञान मंत्रालय
India Meteorological Department
Ministry of Earth Sciences



**SATELLITE BULLETIN BASED ON SATELLITE
IMAGERIES AND PRODUCTS**
28.02.2025 TIME 0900 UTC



TCIN50 DEMS 280900

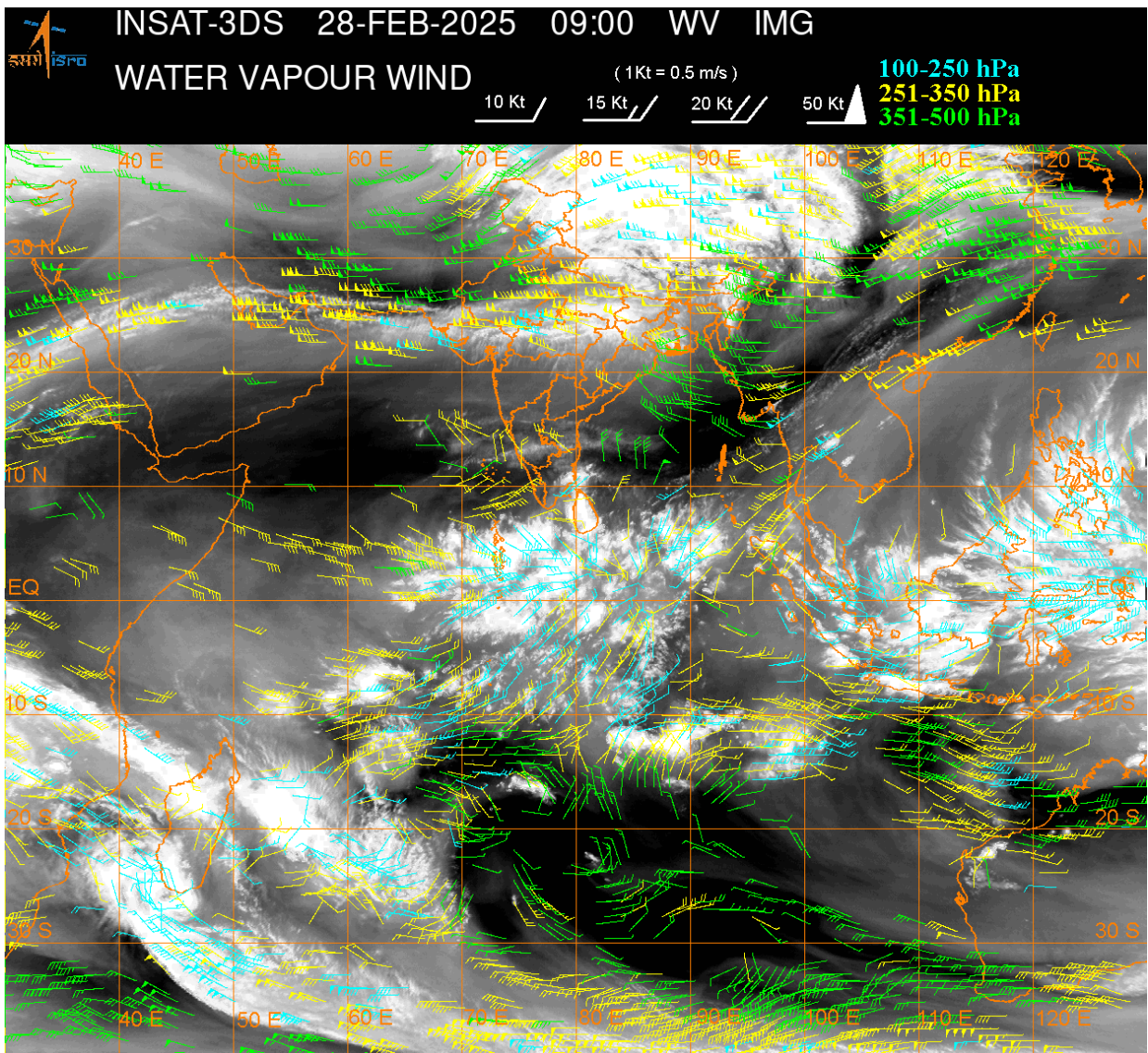
SATELLITE BULLETIN BASED ON INSAT-3DS PIC OF 280900 UTC (.)

REGION COVERED BETWEEN LAT 50.0°N TO 35.0°S AND LONG 40.0°E TO 125.0°E (.)

SALIENT FEATURES:-

WESTERN DISTURBANCE:-

SCT TO BKN MULTILAYERED CLOUDS OVER PAK LADAKH J&K HP UTRKND PJB HARY DLH
RAJ N MP UP BHR NEPAL TIBET ADJ CHINA IN ASSW **WD** OVER THE AREA (.)



CLOUDS DESCRIPTION WITHIN INDIA:-

NORTH:-

SCT TO BKN LOW/MED CLOUDS WITH EMBDD MOD TO INT CONVTN OVER LADAKH E J&K HP UTRKND UP AND WK TO MOD CONVTN OVER E PJB HARY W J&K (.)SCT LOW/MED CLOUDS OVER REST PJB(.)

EAST:-

SCT LOW/MED CLOUDS WITH EMBDD MOD TO INT CONVTN OVER BHR NW JHRKND SKM ARUPR (.) SCT LOW/MED CLOUDS WITH EMBDD ISOL WK TO MOD CONVTN OVER N CHTGH S JHRKND NW ORS SHWB ASSAM NAGA MEGHA & N BD (.) ISOL TO SCT LOW/MED CLOUDS OVER S CHTGH REST ORS GWB REST NE STATES (.)

WEST:-

SCT LOW/MED CLOUDS WITH EMBDD WK TO MOD CONVTN OVER RAJ MP GUJ (.) ISOL TO SCT LOW/MED CLOUDS OVER MAHA & GOA (.)

SOUTH:-

SCT LOW/MED CLOUDS WITH EMBDD ISOL WK TO MOD CONVTN OVER COTL TN (.) ISOL TO SCT LOW/MED CLOUDS OVER KRNTK RYLSM S COTL AP KER LKSDP ILS AREA ANDAMAN & NICOBAR ILS (.)

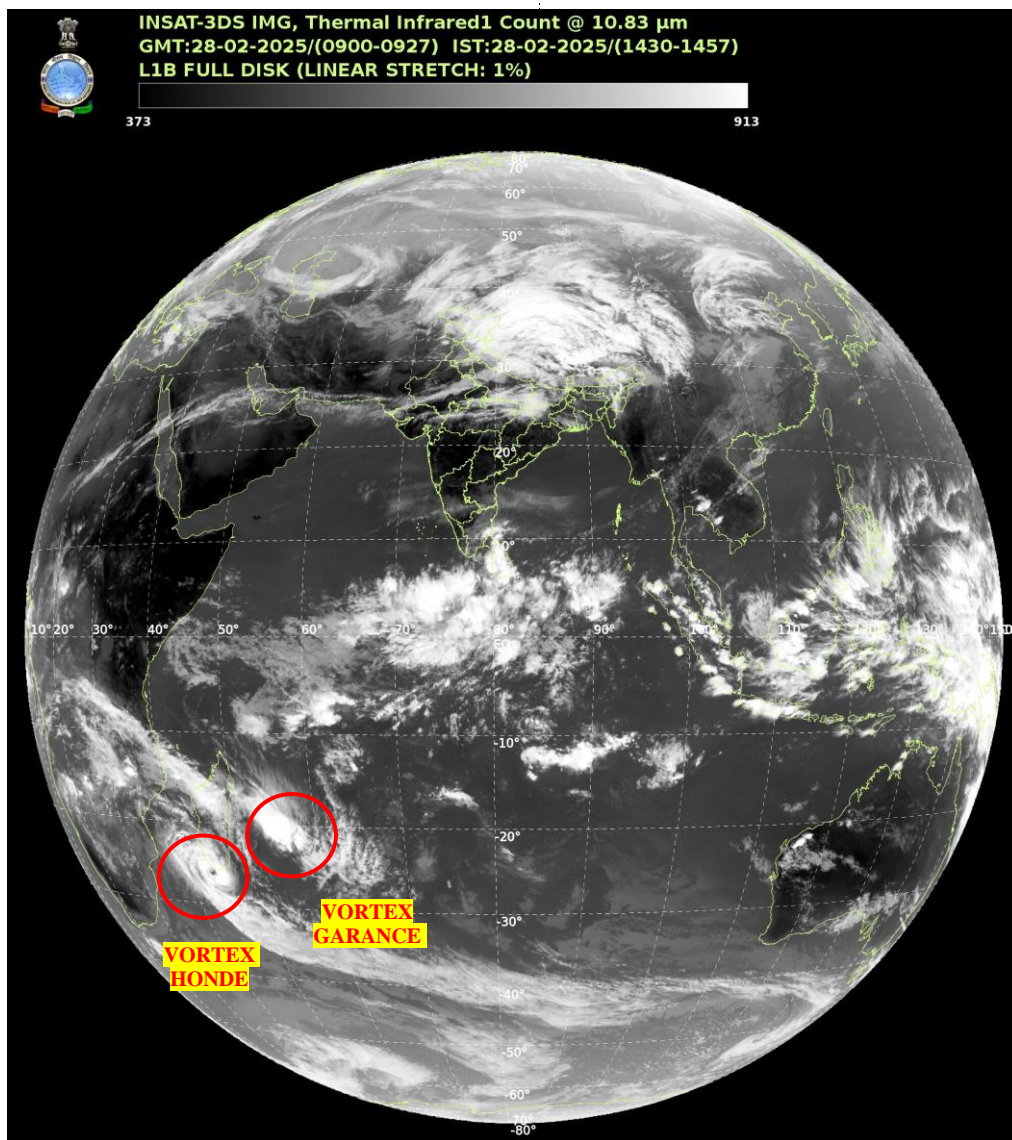
ARABIAN SEA:-

SCT LOW/MED CLOUDS WITH EMBDD MOD TO INT CONVTN OVER SE ARSEA MALDIVES & COMORIN AREA ADJ EQUATORIAL INDIAN OCEAN AND ISOL WK TO MOD CONVTN OVER NORTH ARSEA (.) SCT LOW/MED CLOUDS OVER REST ARSEA LKSDP ILS AREA (.)

BAY OF BENGAL & ANDAMAN SEA:-

SCT LOW/MED CLOUDS WITH EMBDD MOD TO INT CONVTN OVER SOUTH BAY AND ISOL WK TO MOD CONVTN OVER SOUTH ANDAMAN SEA (.) SCT LOW/MED CLOUDS OVER NW & CENTRAL BAY AND NORTH ANDAMAN SEA (.)

CLOUDS DESCRIPTION OUTSIDE INDIA:-



VORTEX (GARANCE) OVER SOUTH INDIAN OCEAN:-

VORTEX (GARANCE) OVER SOUTH INDIAN OCEAN (AREA D55) CENTERED NEAR 21.6S / 55.1E (.) INTENSITY T4.0/5.0 (.) MAXIMUM SUSTAINED WINDS 90-119 KTS (.) ASSTD SCT TO BKN LOW/MED CLOUDS WITH EMBDD INT TO V INT CONVTN OVER AREA BET LAT 16.0S TO 22.0S LONG 52.0E TO 58.0E (.)

VORTEX (HONDE) OVER SOUTH INDIAN OCEAN:-

VORTEX (HONDE) OVER SOUTH INDIAN OCEAN (AREA D75) CENTERED NEAR 25.9S / 44.3E (.) INTENSITY T4.5/4.5 (.) MAXIMUM SUSTAINED WINDS 64-89 KTS (.) ASSTD SCT TO BKN LOW/MED CLOUDS WITH EMBDD INT TO V INT CONVTN OVER AREA BET LAT 21.0S TO 35.0S LONG 38.0E TO 50.0E MOZAMBIQUE CHANNEL & MADAGASCAR (.)

SCT LOW/MED CLOUDS WITH EMBDD MOD TO INT CONVTN OVER SRI LANKA PALK STR GULF OF MANNAR MALDIVES PAK NEPAL BHUTAN TIBET CHINA SUMATRA STR OF MALACCA MALAYSIA BORNEO SOUTH CHINA SEA JAVA ILS & SEA CELEBES ILS & SEA PHILIPPINES SULU SEA MADAGASCAR MOZAMBIQUE CHANNEL AND OVER INDIAN OCEAN BET LAT 5.0N TO 15.0S LONG 40.0E TO 105.0E AND BET LAT 15.0S TO 35.0S LONG 40.0E TO 70.0E (.)

TOO 28/1530 EF=

NNNN

LEGEND:-

REGION	NORTH	J&K HP PJB HARY DLH UP UTRKND	
	EAST	BHR JHRKND CHTGH ORS WB SKM NORTH- EAST STATES	
	WEST	RAJ MP GUJ MAHA GOA	
	SOUTH	TLNGN AP KRNTK KER TN LKSDP ANDAMAN & NICOBAR ILS	
CLOUD DISTRIBUTION	ISOL	ISOLATED (LESS THAN 25%)	
	SCT	SCATTERED (25 TO 50%)	
	BKN	BROKEN (51 TO 75%)	
	SLD	SOLID (GREATER THAN 75%)	
CLOUDS TOP TEMPERATURE	CTT	CLOUD TOP TEMPERATURE	
CONVECTION	WK CONV TN	WEAK CONVECTION (CTT GREATER THAN -25°C)	
	MOD CONV TN	MODERATE CONVECTION (CTT BETWEEN -25°C TO -40°C)	
	INT CONV TN	INTENSE CONVECTION (CTT BETWEEN -41°C TO -70°C)	
	V INT CONV TN	VERY INTENSE CONVECTION (CTT LESS THAN -70°C)	
METEOROLOGICAL SUB- DIVISIONS, STATES & UNION TERRITORIES	ARUPR	ARUNACHAL PRADESH	
	BHR	BIHAR	
	CHTGH	CHHATTISGARH	
	COTL AP	COASTAL ANDHRA PRADESH	
	COTL KRNTK	COASTAL KARNATAKA	
	COTL ORS	COASTAL ORISSA	
	GUJ	GUJARAT	
	GWB	GANGETIC WEST BENGAL	
	HARY	HARYANA	
	DLH	DELHI	
	HP	HIMACHAL PRADESH	
	J&K	JAMMU AND KASHMIR	
	JHRKND	JHARKHAND	
	KER	KERALA	
	KKN	KONKAN	
	LKSDP	LAKSHADWEEP	
	M MAHA	MADHYA MAHARASHTRA	
	MAHA	MAHARASHTRA	
	MANI	MANIPUR	
	MEGHA	MEGHALAYA	
	MIZO	MIZORAM	
	MP	MADHYA PRADESH	
		MRTHWD	MARATHWADA
		NAGA	NAGALAND
N COTL AP		NORTH COASTAL ANDHRA PRADESH	
NIK		NORTH INTERIOR KARNATAKA	

	ORS	ORISSA
	PJB	PUNJAB
	RAJ	RAJASTHAN
	RYLSM	RAYALASEEMA
	SAU & KUTCH	SAURASHTRA & KUTCH
	SHWB	SUB-HIMALAYAN WEST BENGAL
	SIK	SOUTH INTERIOR KARNATAKA
	SKM	SIKKIM
	TLNGN	TELANGANA
	TN	TAMIL NADU
	TRP	TRIPURA
	UP	UTTAR PRADESH
	UTRKND	UTTARAKHAND
	VID	VIDHARBHA
	SHWB	SUB HIMALAYAN WEST BENGAL
	GWB	GANGETIC WEST BENGAL
	ARSEA	ARABIAN SEA
	ILS	ISLANDS
MISCELLANEOUS	ASSW	IN ASSOCIATION WITH
	ASSTD	ASSOCIATED
	LLC	LOW LEVEL CIRCULATION
	EMBDD	EMBEDDED
	N/HOOD	NEIGHBOURHOOD
	EXT	EXTREME