



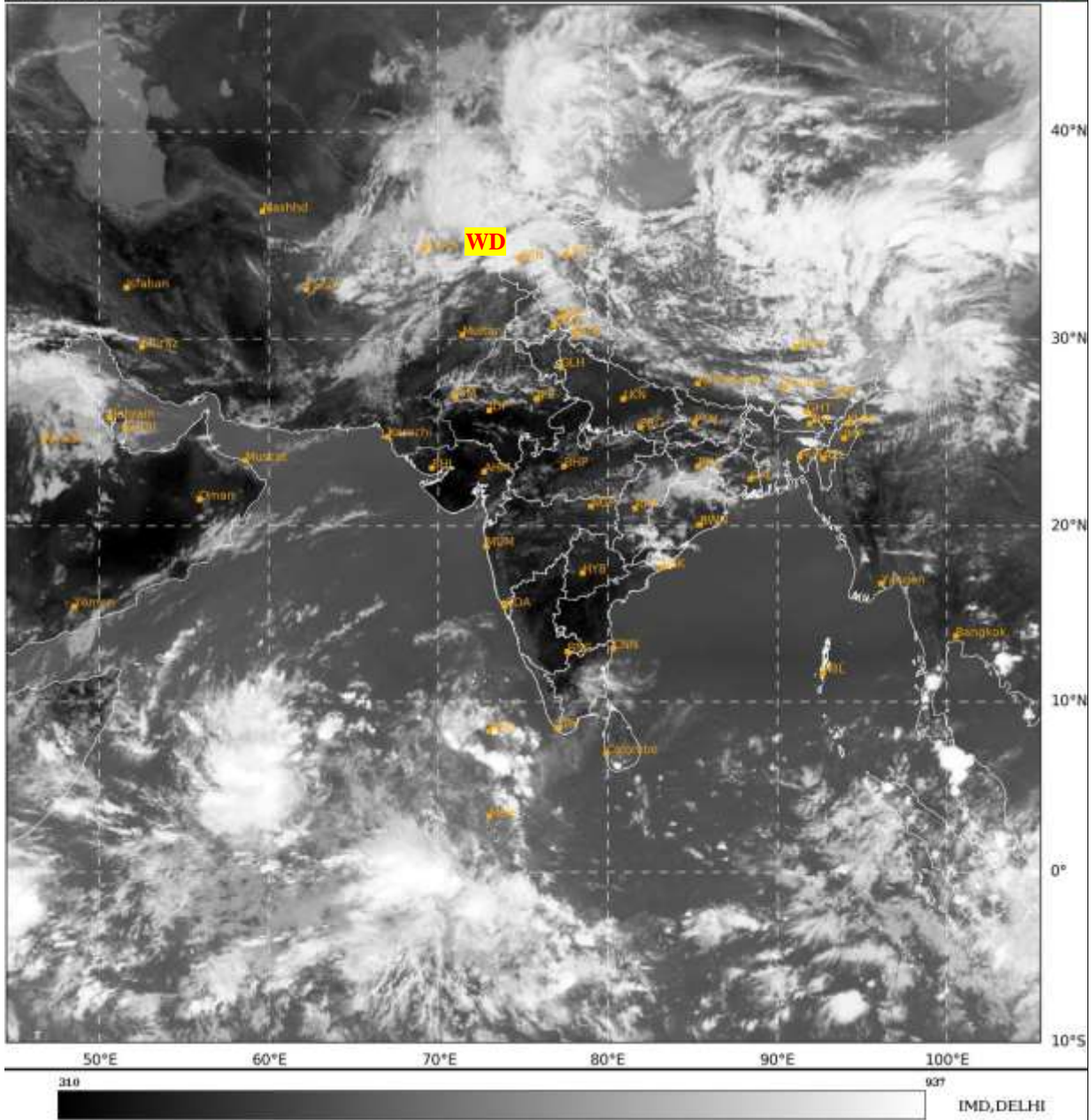
भारत मौसम विज्ञान विभाग
पृथ्वी विज्ञान मंत्रालय
India Meteorological Department
Ministry of Earth Sciences



**SATELLITE BULLETIN BASED ON SATELLITE
IMAGERIES AND PRODUCTS**
28.04.2024 TIME 0900 UTC

SAT : INSAT-3D IMG
IMG_TIR1 10.8 um
LIC Mercator

28-04-2024/(0900 to 0926) GMT
28-04-2024/(1430 to 1456) IST



TCIN50 DEMS 280900

SATELLITE BULLETIN BASED ON INSAT-3D PIC OF 280900 UTC (.)

REGION COVERED BETWEEN LAT 50.0°N TO 35.0°S AND LONG 30.0°E TO 125.0°E (.)

SALIENT FEATURES:-

WESTERN DISTURBANCE:-

SCT TO BKN MULTILAYERED CLOUDS OVER AFGAN N PAK LADAKH J&K HP UTRKND PJB HARY DLH RAJ NW UP AND N/HOOD IN ASSW **WD** OVER THE AREA (.)

CONVECTIVE / THUNDERSTORM ACTIVITY:-

INTENSE TO VERY INTENSE CONVECTIVE / THUNDERSTORM ACTIVITY OBSERVED OVER N COTL AP (MINIMUM **CTT MINUS 85 DEG CEL**) (.)

MODERATE TO INTENSE CONVECTIVE / THUNDERSTORM ACTIVITY OBSERVED OVER LADAKH J&K HP W PJB E ARUPR W ASSAM (MINIMUM **CTT MINUS 55-65 DEG CEL**) S CHTGH S ORS (MINIMUM **CTT MINUS 60 DEG CEL**) (.)



INSAT-3D 28-APR-2024 09:00 WV IMG

WATER VAPOUR WIND

(1Kt = 0.5 m/s)

10 Kt

15 Kt

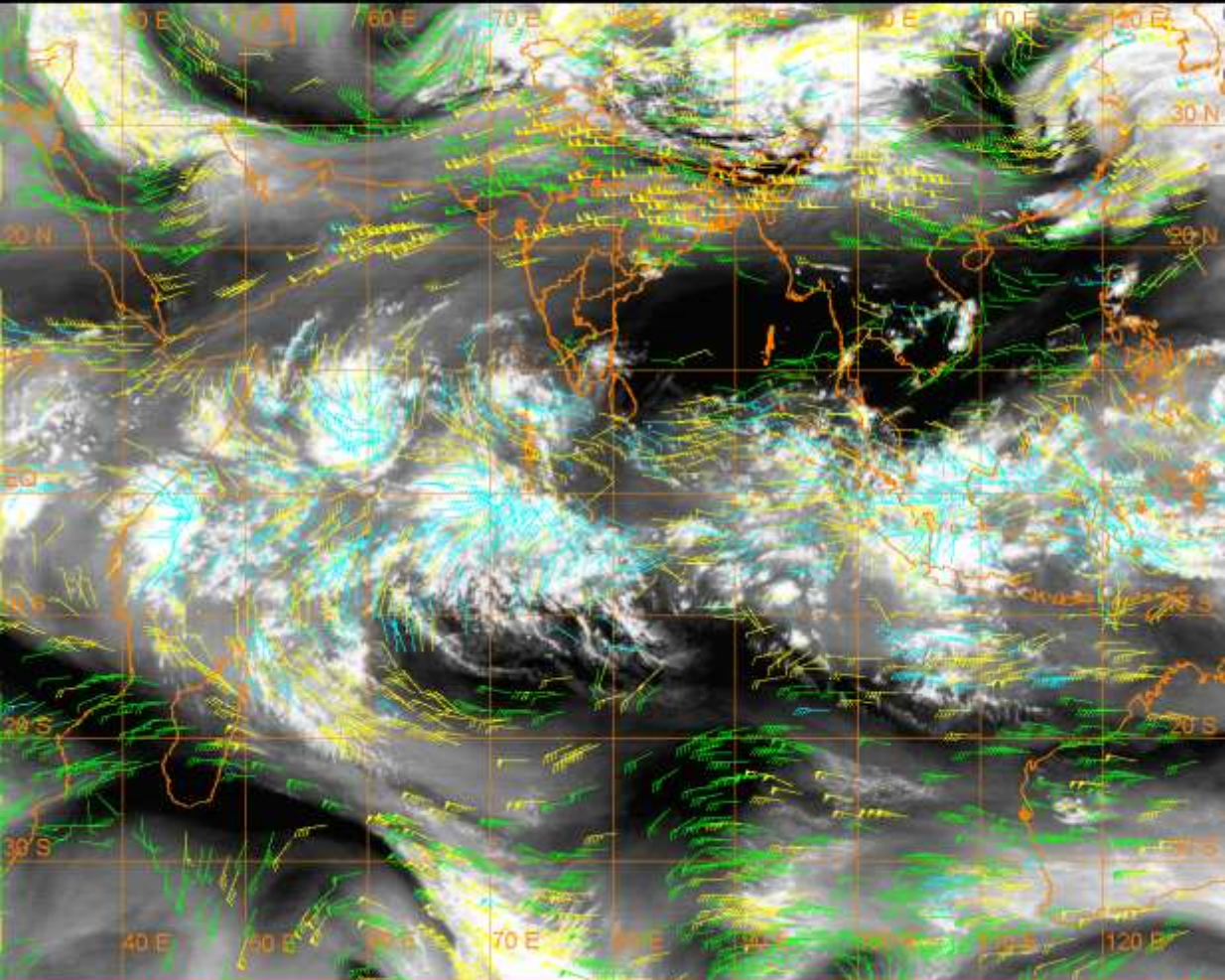
20 Kt

50 Kt

100-250 hPa

251-350 hPa

351-500 hPa



CLOUDS DESCRIPTION WITHIN INDIA:-

NORTH:-

SCT TO BKN LOW/MED CLOUDS WITH EMBDD MOD TO INT CONVTN OVER LADAKH J&K HP N UTRKND (.) SCT LOW/MED CLOUDS WITH EMBDD WK TO MOD CONVTN OVER S UTRKND PJB N HARY N UP (.) SCT LOW/MED CLOUDS OVER S HARY DLH REST UP (.)

EAST:-

SCT LOW/MED CLOUDS WITH EMBDD MOD TO INT CONVTN OVER S CHTGH S ORS W ASSAM ARUPR NAGA AND WK TO MOD CONVTN OVER BHR JHRKND N CHTGH N ORS GWB SKM NE ASSAM (.) SCT LOW/MED CLOUDS OVER SHWB REST ASSAM MEGHA MIZO (.)

WEST:-

SCT LOW/MED CLOUDS WITH EMBDD WK TO MOD CONVTN OVER MP (.) SCT LOW/MED CLOUDS OVER RAJ GUJ MAHA (.)

SOUTH:-

SCT LOW/MED CLOUDS WITH EMBDD INT TO V INT CONVTN OVER SOUTH PARTS OF LKSDP ILS AREA (.) SCT LOW/MED CLOUDS WITH EMBDD WK TO MOD CONVTN OVER W TN & NICOBAR ILS (.) SCT LOW/MED CLOUDS OVER NIK TLNGN KER REST TN REST LKSDP ILS (.)

ARABIAN SEA:-

SCT LOW/MED CLOUDS WITH EMBDD INT TO V INT CONVTN OVER SW ARSEA & MALDIVES AREA (.) SCT LOW/MED CLOUDS WITH EMBDD ISOL MOD TO INT CONVTN OVER SE ARSEA AND WK TO MOD CONVTN OVER REST ARSEA (.)

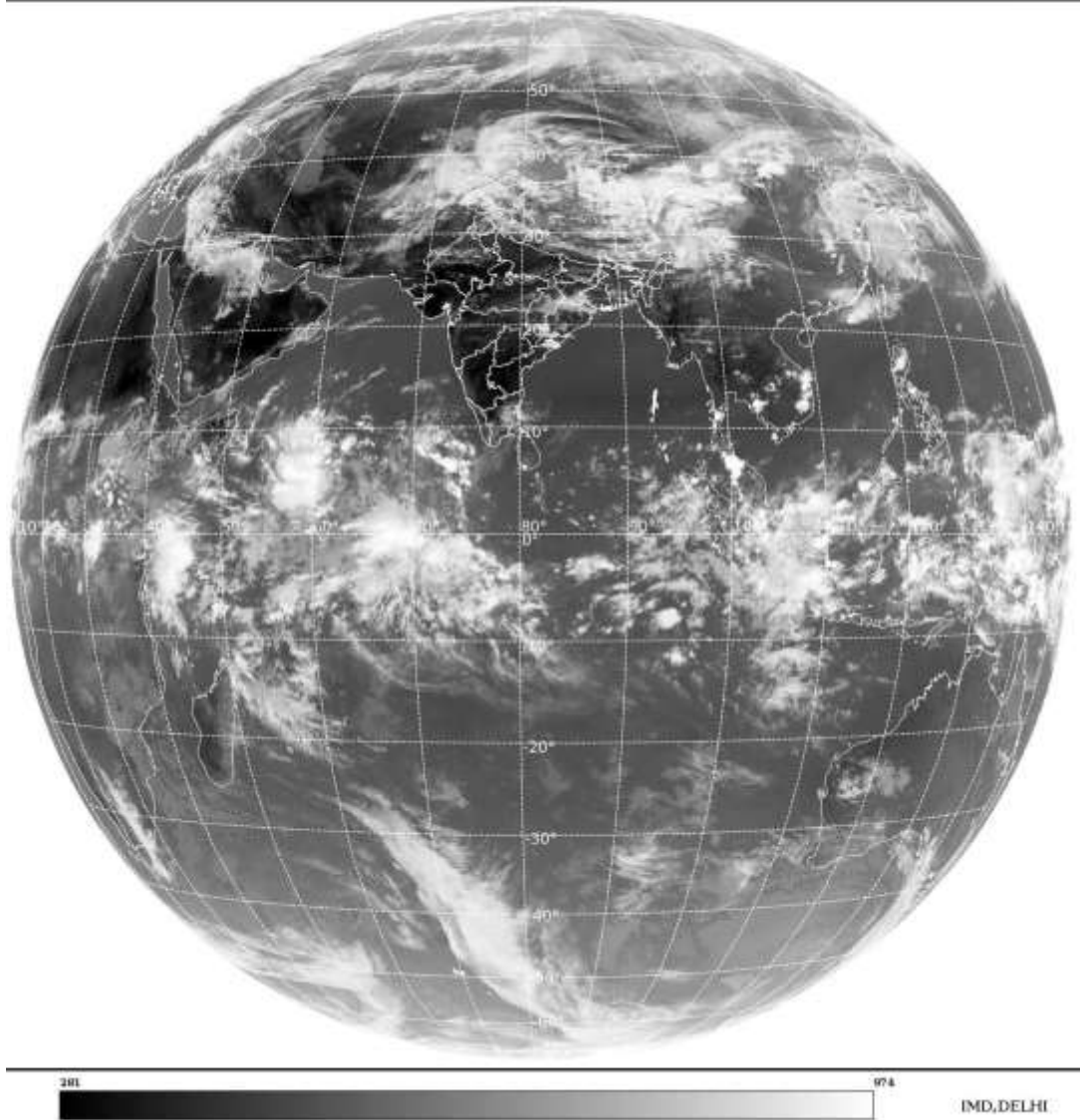
BAY OF BENGAL & ANDAMAN SEA:-

SCT LOW/MED CLOUDS WITH EMBDD ISOL MOD TO INT CONVTN OVER SE BAY & S ANDAMAN SEA (.)

CLOUDS DESCRIPTION OUTSIDE INDIA:-

SAT : INSAT-3D IMG
Thermal Infrared1 Count 10.8 um
L1B FULL DISK

28-04-2024(0900 to 0926) GMT
28-04-2024(1430 to 1456) IST



SCT LOW/MED CLOUDS WITH EMBDD MOD TO INT CONVTN OVER MALDIVES PAK TIBET CHINA BHUTAN YELLOW SEA EAST CHINA SEA TAIWAN MYANMAR SUMATRA STR OF MALACCA MALAYSIA BORNEO SOUTH CHINA SEA JAVA ILS & SEA CELEBES ILS & SEA PHILIPPINES SULU SEA N MADAGASCAR N MOZAMBIQUE CHANNEL AND OVER INDIAN OCEAN BET LAT 5.0N TO 20.0S LONG 40.0E TO 120.0E AND BET LAT 20.0S TO 35.0S LONG 60.0E TO 85.0E (.)

TOO 28/1530 HRS IST=

NNNN

LEGEND:-

| | | |
|---------------|--------------|---|
| REGION | NORTH | J&K HP PJB HARY DLH UP UTRKND |
| | EAST | BHR JHRKND CHTGH ORS WB SKM NORTH- EAST STATES |
| | WEST | RAJ MP GUJ MAHA GOA |

| | | | |
|--|---------------------|--|-------------------|
| | SOUTH | TLNGN AP KRNTK KER TN LKSDP ANDAMAN & NICOBAR ILS | |
| CLOUD DISTRIBUTION | ISOL | ISOLATED (LESS THAN 25%) | |
| | SCT | SCATTERED (25 TO 50%) | |
| | BKN | BROKEN (51 TO 75%) | |
| | SLD | SOLID (GREATER THAN 75%) | |
| CLOUDS TOP TEMPERATURE | CTT | CLOUD TOP TEMPERATURE | |
| CONVECTION | WK CONVTN | WEAK CONVECTION (CTT GREATER THAN -25°C) | |
| | MOD CONVTN | MODERATE CONVECTION (CTT BETWEEN -25°C TO -40°C) | |
| | INT CONVTN | INTENSE CONVECTION (CTT BETWEEN -41°C TO -70°C) | |
| | V INT CONVTN | VERY INTENSE CONVECTION (CTT LESS THAN -70°C) | |
| METEOROLOGICAL SUB- DIVISIONS, STATES & UNION TERRITORIES | ARUPR | ARUNACHAL PRADESH | |
| | BHR | BIHAR | |
| | CHTGH | CHHATTISGARH | |
| | COTL AP | COASTAL ANDHRA PRADESH | |
| | COTL KRNTK | COASTAL KARNATAKA | |
| | COTL ORS | COASTAL ORISSA | |
| | GUJ | GUJARAT | |
| | GWB | GANGETIC WEST BENGAL | |
| | HARY | HARYANA | |
| | DLH | DELHI | |
| | HP | HIMACHAL PRADESH | |
| | J&K | JAMMU AND KASHMIR | |
| | JHRKND | JHARKHAND | |
| | KER | KERALA | |
| | KKN | KONKAN | |
| | LKSDP | LAKSHADWEEP | |
| | M MAHA | MADHYA MAHARASHTRA | |
| | MAHA | MAHARASHTRA | |
| | MANI | MANIPUR | |
| | MEGHA | MEGHALAYA | |
| | MIZO | MIZORAM | |
| | MP | MADHYA PRADESH | |
| | | MRTHWD | MARATHWADA |
| | | NAGA | NAGALAND |
| N COTL AP | | NORTH COASTAL ANDHRA PRADESH | |
| NIK | | NORTH INTERIOR KARNATAKA | |
| ORS | | ORISSA | |
| PJB | | PUNJAB | |
| RAJ | | RAJASTHAN | |
| RYLSM | | RAYALASEEMA | |
| SAU & KUTCH | | SAURASHTRA & KUTCH | |
| | SHWB | SUB-HIMALAYAN WEST BENGAL | |

| | | |
|----------------------|---------------|----------------------------------|
| | SIK | SOUTH INTERIOR KARNATAKA |
| | SKM | SIKKIM |
| | TLNGN | TELANGANA |
| | TN | TAMIL NADU |
| | TRP | TRIPURA |
| | UP | UTTAR PRADESH |
| | UTRKND | UTTARAKHAND |
| | VID | VIDHARBHA |
| | SHWB | SUB HIMALAYAN WEST BENGAL |
| | GWB | GANGETIC WEST BENGAL |
| | ARSEA | ARABIAN SEA |
| | ILS | ISLANDS |
| MISCELLANEOUS | ASSW | IN ASSOCIATION WITH |
| | ASSTD | ASSOCIATED |
| | LLC | LOW LEVEL CIRCULATION |
| | EMBDD | EMBEDDED |
| | N/HOOD | NEIGHBOURHOOD |
| | EXT | EXTREME |