



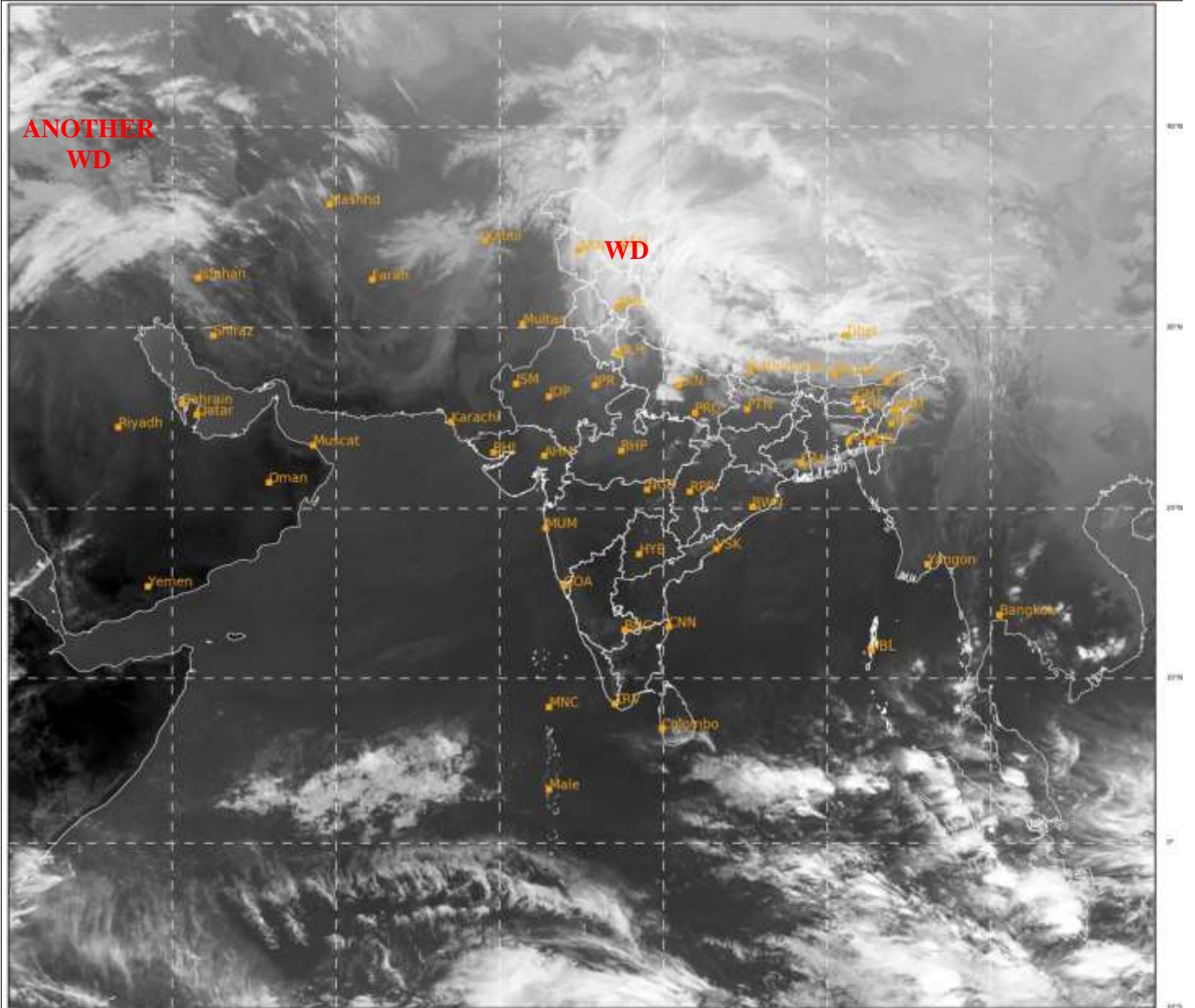
भारत मौसम विज्ञान विभाग
पृथ्वी विज्ञान मंत्रालय
India Meteorological Department
Ministry of Earth Sciences



**SATELLITE BULLETIN BASED ON SATELLITE
IMAGERIES AND PRODUCTS**
03.02.2022 TIME 1200 UTC

SAT : INSAT-3D IMG
IMG_TIR1 10.8 um
LIC Mercator

03-02-2022/(1200 to 1226) GMT
03-02-2022/(1730 to 1756) IST



401

937

IMD, DELHI

TCIN50 DEMS 031200

SATELLITE BULLETIN BASED ON INSAT-3D PIC OF 031200 UTC (.)

REGION COVERED BETWEEN LAT 50.0°N TO 30.0°S AND LONG 40.0°E TO 125.0°E (.)

SALIENT FEATURES:-

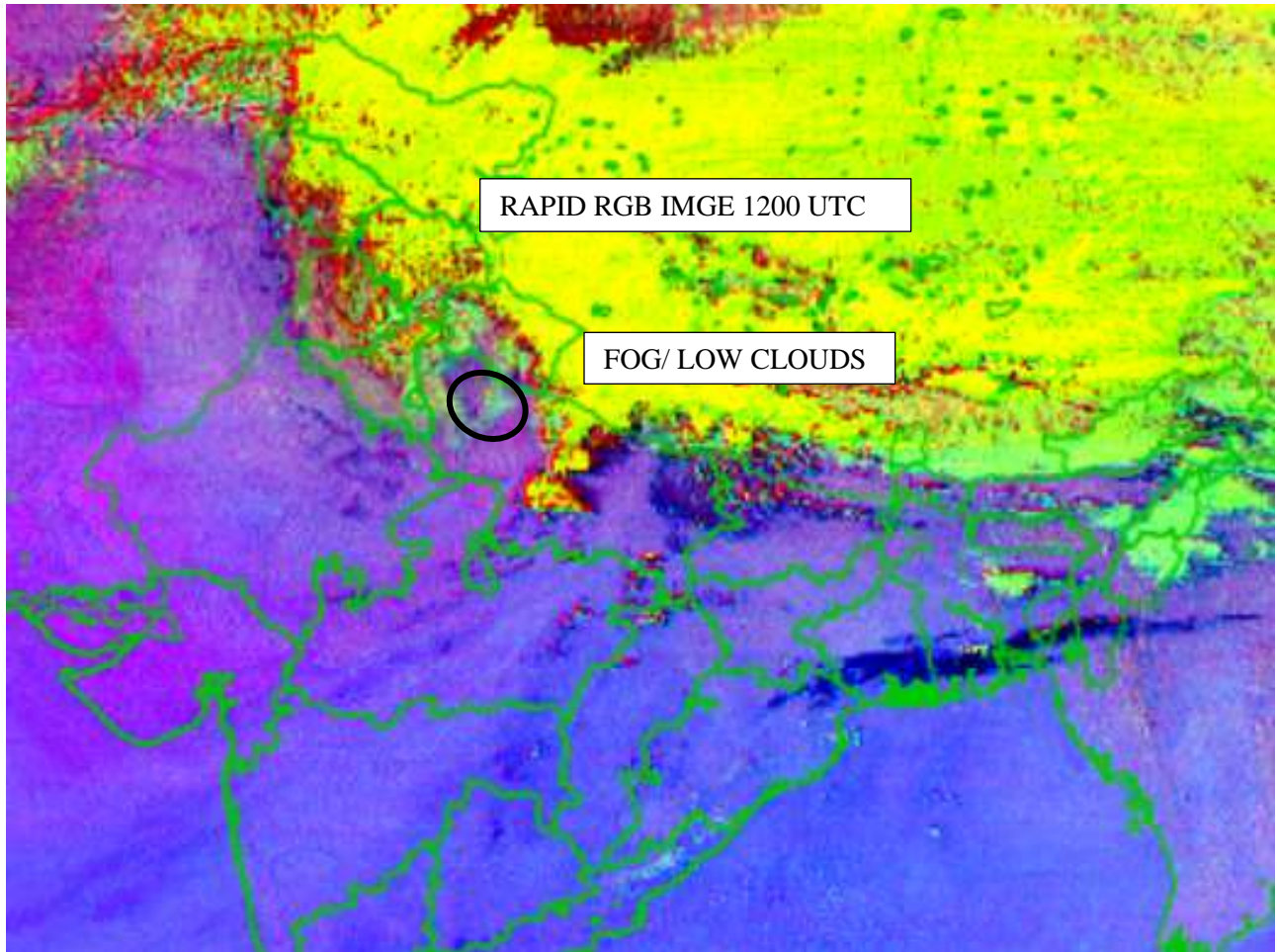
WESTERN DISTURBANCE (WD):-

SCT MULTILAYERED CLOUDS OVER EXTREME NE PAK LADAKH J&K HP UTRKND PJB N HARY
N UP NEPAL TIBET ADJ CHINA IN ASSW **WD** OVER THE AREA (.)

SCT MULTILAYERED CLOUDS OVER BLACK SEA CASPIAN SEA AND N/HOOD IN ASSW
ANOTHER WD OVER THE AREA (.)

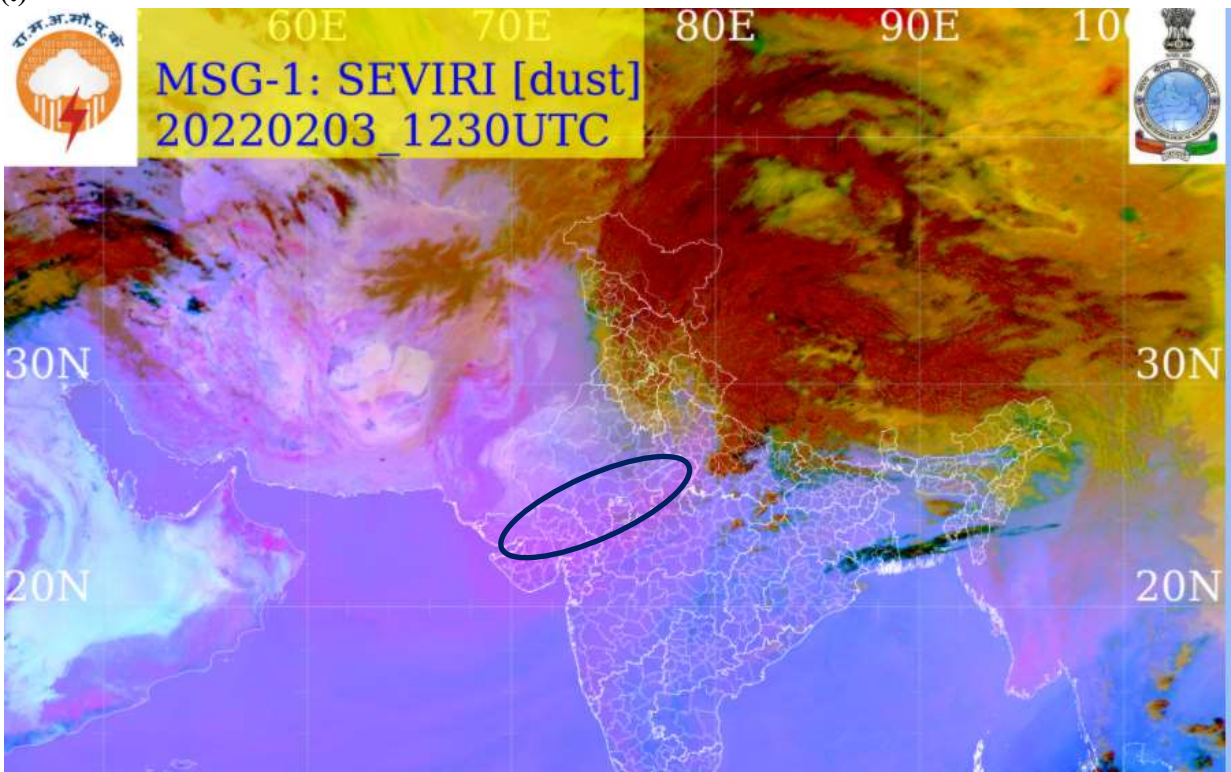
FOG/LOW CLOUDS:-

NIGHT MICROPHYSICS PRODUCT OF INSAT -3D AT 1200 UTC INDICATES ISOL FOG/LOW CLOUDS OVER NW UP (.)



DUST:-

METESAT-8 RGB DUST PRODUCT AT 1230 UTC INDICATES DUST OVER N GUJ SE RAJ ADJ EXT NW MP (.)





INSAT-3DR 03-FEB-2022 11:45 WV IMG

WATER VAPOUR WIND

(1Kt = 0.5 m/s)

10 Kt

15 Kt

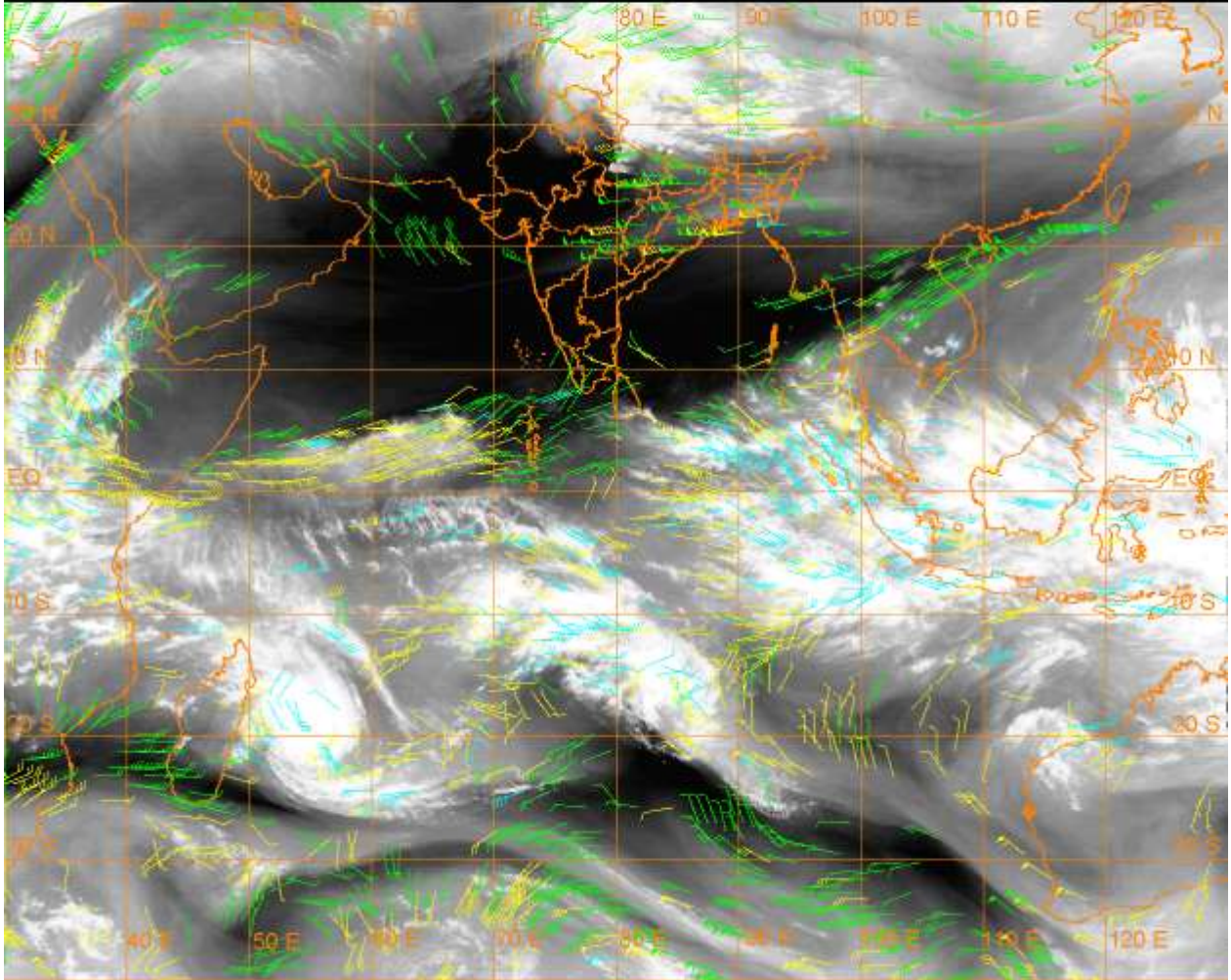
20 Kt

50 Kt

100-250 hPa

251-350 hPa

351-500 hPa



CLOUDS DESCRIPTION WITHIN INDIA:-

NORTH:-

SCT TO BKN LOW/MED CLOUDS WITH EMBDD MOD TO INT CONVTN OVER LADAKH J&K N HP N UTRKND ADJ NC UP AND WK TO MOD CONVTN OVER PJB N HARY NE UP (.) SCT LOW/MED CLOUDS OVER S HARY DLH REST UP (.)

EAST:-

SCT LOW/MED CLOUDS OVER WITH EMBDD ISOL WK TO MOD CONVTN OVER N BHR EXT N CHTGH S GWB N SHWB SKM ARUPR NAGA E ASSAM N MANI N MIZO S TRP (.) SCT LOW/MED CLOUDS OVER CHTGH ORS JHRKND N GWB REST CHTGH ORS S SHWB REST NE STATES (.)

WEST:-

SCT LOW/MED CLOUDS OVER WITH EMBDD ISOL WK CONVTN OVER NE MP (.) SCT LOW/MED CLOUDS OVER N RAJ NW MP E VID (.)

SOUTH:-

SCT LOW/MED CLOUDS OVER SIK N COTL AP KER W TN & ANDAMAN & NICOBAR ILS (.)

ARABIAN SEA:-

SCT LOW/MED CLOUDS OVER SOUTH ARSEA (.)

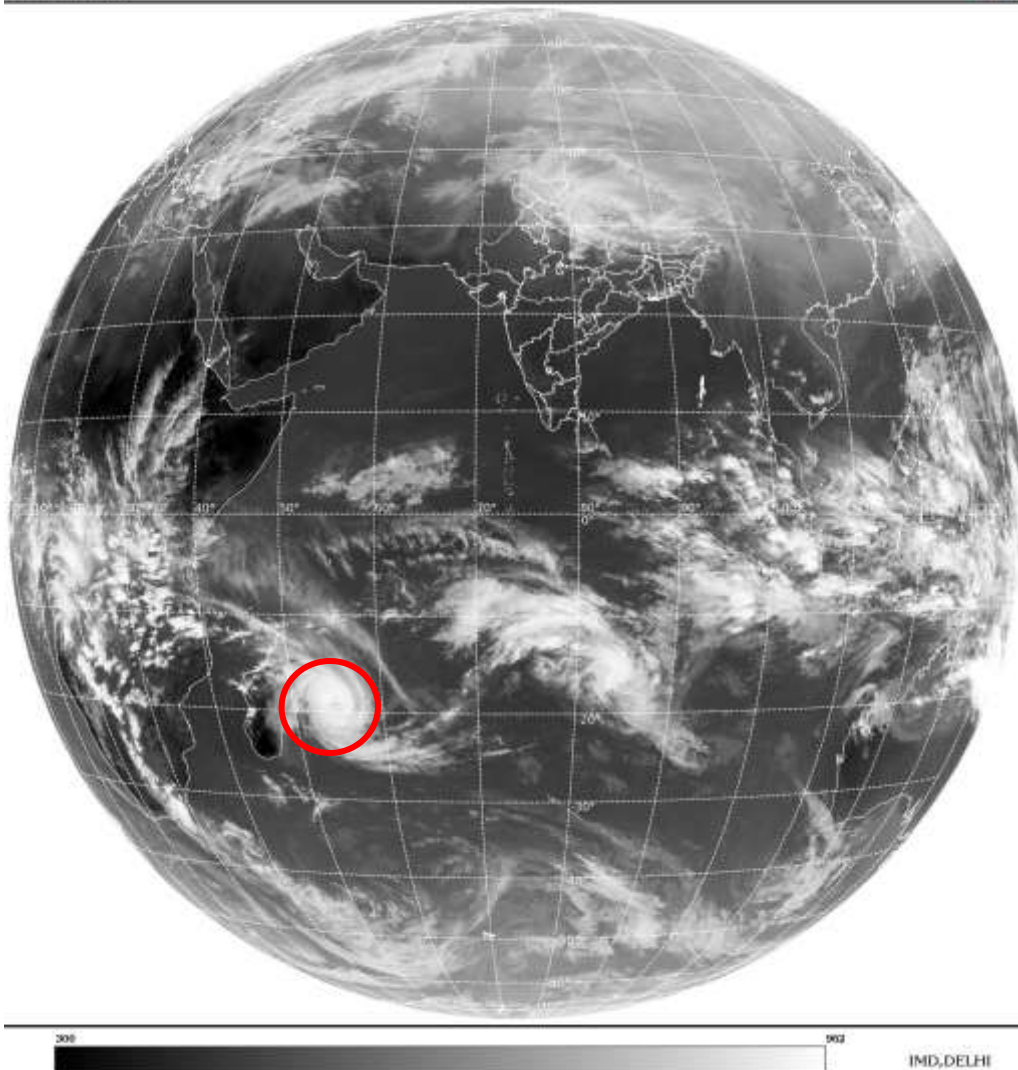
BAY OF BENGAL & ANDAMAN SEA:-

SCT LOW/MED CLOUDS WITH EMBDD MOD TO INT CONVTN OVER EXTREME S BAY ADJ EQUATORIAL INDIA OCEAN (.) SCT LOW/MED CLOUDS OVER REST SOUTH BAY & SOUTH ANDAMAN SEA (.)

CLOUDS DESCRIPTION OUTSIDE INDIA:-

SAT : INSAT-3DR IMG
Thermal Infrared1 Count 10.8 um
L1B FULL DISK

03-02-2022/(1215 to 1242) GMT
03-02-2022/(1745 to 1812) IST



VORTEX (BATSIRAI) OVER SOUTH INDIAN OCEAN:-

VORTEX (BATSIRAI) OVER SOUTH INDIAN OCEAN CENTERED NEAR 19.1S / 55.0E (.) INTENSITY T5.0/6.0 (.) ASSTD BKN LOW/MED CLOUDS WITH EMBDD INT TO V INT CONVTN OVER AREA BET LAT 14.0S TO 22.0S LONG 52.0E TO 58.5E (.)

SCT LOW/MED CLOUDS WITH EMBDD MOD TO INT CONVTN OVER NEPAL TIBET CHINA SUMATRA STR OF MALACCA MALASIYA BORNEO ADJ SOUTH CHINA SEA JAVA SEA CELEBES ILS & SEA PHILIPPINES E CHIN ASEA N MADAGASCAR N MOZAMBIQUE CHANNEL AND OVER INDIAN OCEAN BET LAT 5.0N TO 10.0S LONG 41.0E TO 110.0E AND BET LAT 10.0S TO 26.0S LONG 50.0E TO 94.0E (.)

TOO 03/1840 HRS IST=

NNNN

LEGEND:-

REGION	NORTH	J&K HP PJB HARY DLH UP UTRKND
	EAST	BHR JHRKND CHTGH ORS WB SKM NORTH- EAST STATES
	WEST	RAJ MP GUJ MAHA GOA

	SOUTH	TLNGN AP KRNTK KER TN LKSDP ANDAMAN & NICOBAR ILS
--	--------------	--

CLOUD DISTRIBUTION	ISOL	ISOLATED (LESS THAN 25%)	
	SCT	SCATTERED (25 TO 50%)	
	BKN	BROKEN (51 TO 75%)	
	SLD	SOLID (GREATER THAN 75%)	
CLOUDS TOP TEMPERATURE	CTT	CLOUD TOP TEMPERATURE	
CONVECTION	WK CONVTN	WEAK CONVECTION (CTT GREATER THAN -25°C)	
	MOD CONVTN	MODERATE CONVECTION (CTT BETWEEN -25°C TO -40°C)	
	INT CONVTN	INTENSE CONVECTION (CTT BETWEEN -41°C TO -70°C)	
	V INT CONVTN	VERY INTENSE CONVECTION (CTT LESS THAN -70°C)	
METEOROLOGICAL SUB-DIVISIONS, STATES & UNION TERRITORIES	ARUPR	ARUNACHAL PRADESH	
	BHR	BIHAR	
	CHTGH	CHHATTISGARH	
	COTL AP	COASTAL ANDHRA PRADESH	
	COTL KRNTK	COASTAL KARNATAKA	
	COTL ORS	COASTAL ORISSA	
	GUJ	GUJARAT	
	GWB	GANGETIC WEST BENGAL	
	HARY	HARYANA	
	DLH	DELHI	
	HP	HIMACHAL PRADESH	
	J&K	JAMMU AND KASHMIR	
	JHRKND	JHARKHAND	
	KER	KERALA	
	KKN	KONKAN	
	LKSDP	LAKSHADWEEP	
	M MAHA	MADHYA MAHARASHTRA	
	MAHA	MAHARASHTRA	
	MANI	MANIPUR	
	MEGHA	MEGHALAYA	
	MIZO	MIZORAM	
	MP	MADHYA PRADESH	
		MRTHWD	MARATHWADA
		NAGA	NAGALAND
N COTL AP		NORTH COASTAL ANDHRA PRADESH	
NIK		NORTH INTERIOR KARNATAKA	
ORS		ORISSA	
PJB		PUNJAB	
RAJ		RAJASTHAN	
RYLSM		RAYALASEEMA	
	SAU & KUTCH	SAURASHTRA & KUTCH	

	SHWB	SUB-HIMALAYAN WEST BENGAL
	SIK	SOUTH INTERIOR KARNATAKA
	SKM	SIKKIM
	TLNGN	TELANGANA
	TN	TAMIL NADU
	TRP	TRIPURA
	UP	UTTAR PRADESH
	UTRKND	UTTARAKHAND
	VID	VIDHARBHA
	SHWB	SUB HIMALAYAN WEST BENGAL
	GWB	GANGETIC WEST BENGAL
	ARSEA	ARABIAN SEA
	ILS	ISLANDS
MISCELLANEOUS	ASSW	IN ASSOCIATION WITH
	ASSTD	ASSOCIATED
	LLC	LOW LEVEL CIRCULATION
	EMBDD	EMBEDDED
	N/HOOD	NEIGHBOURHOOD
	EXT	EXTREME