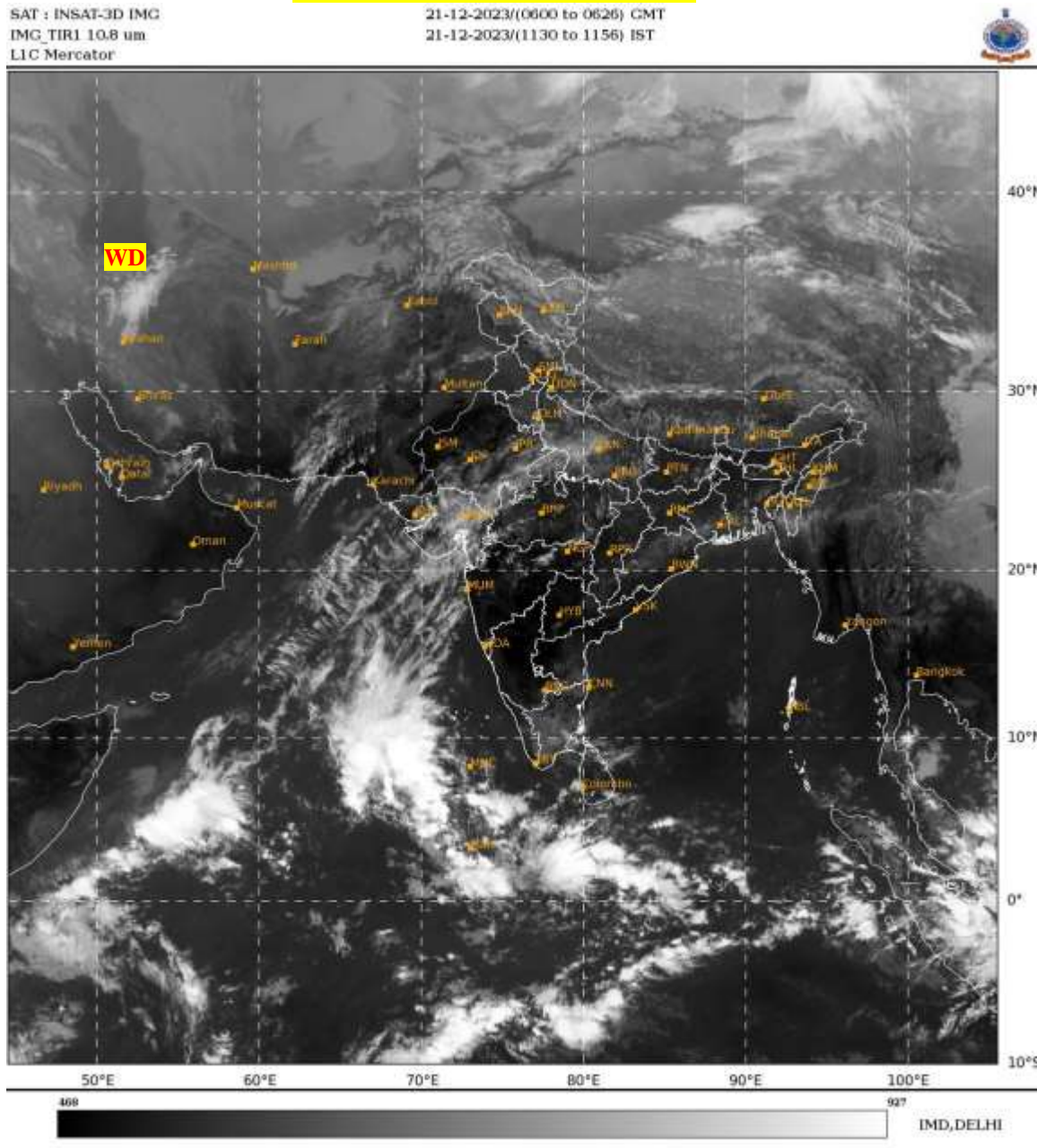




**SATELLITE BULLETIN BASED ON SATELLITE  
IMAGERIES AND PRODUCTS**  
**21.12.2023 TIME 0600 UTC**



TCIN50 DEMS 210600

SATELLITE BULLETIN BASED ON INSAT-3D PIC OF 210600 UTC (.)

REGION COVERED BETWEEN LAT 50.0°N TO 35.0°S AND LONG 40.0°E TO 125.0°E (.)

**SALIENT FEATURES:-**

**WESTERN DISTURBANCE:-**

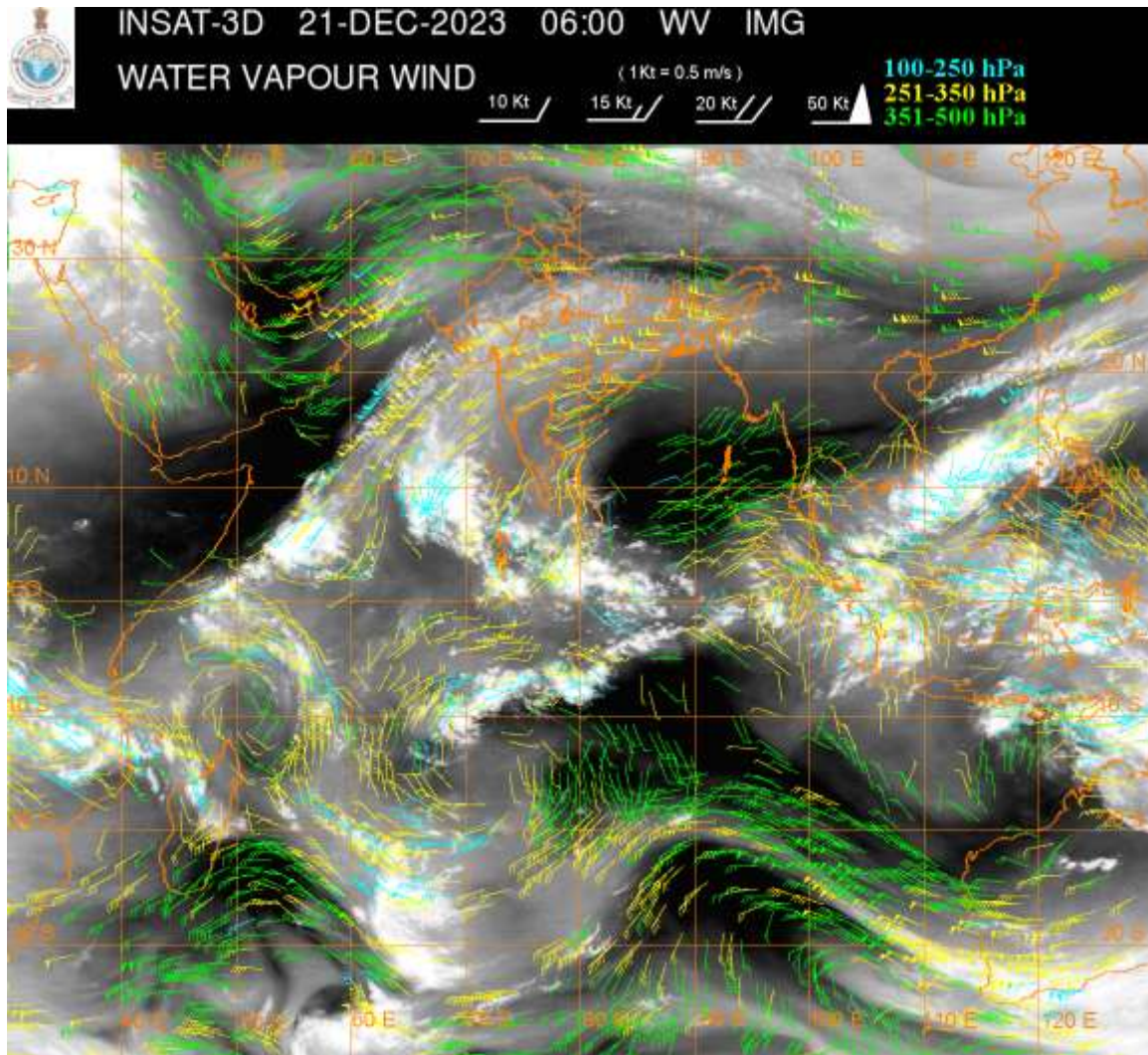
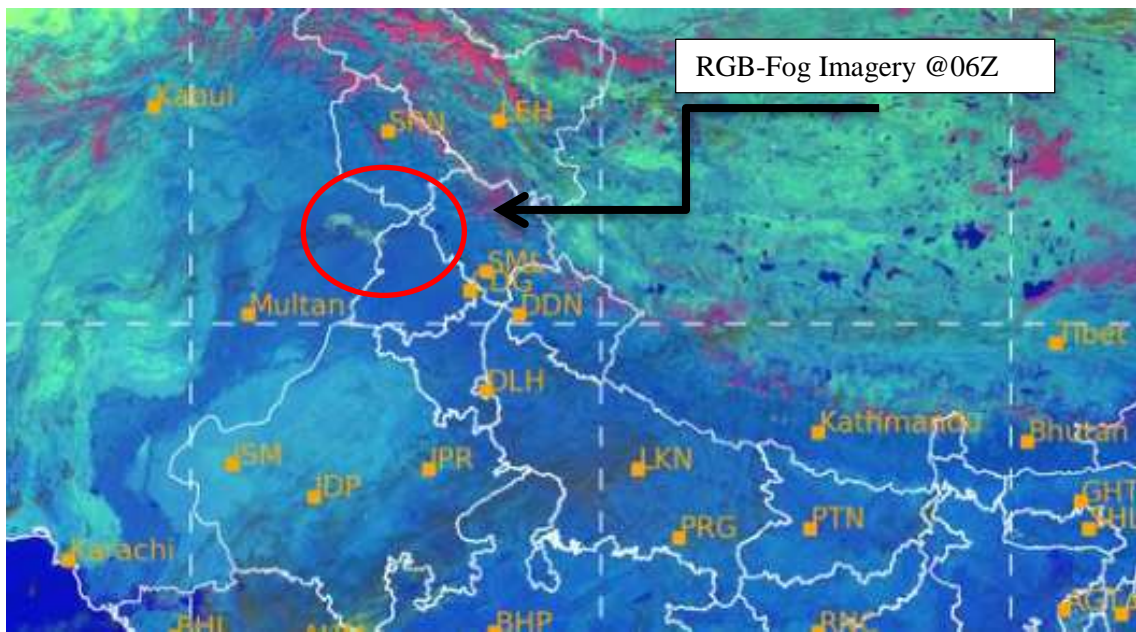
SCT MULTILAYERED CLOUDS OVER IRAN AND N/HOOD IN ASSW **WD** OVER THE AREA (.) SCT MULTILAYERED CLOUDS OVER BLACK SEA AND N/HOOD IN ASSW **ANOTHER WD** OVER THE AREA (.)

**JETSTREAM:-**

WATER VAPOUR WINDS AT 0600 UTC INDICATE JETSTREAM (WESTERLY) RUNNING OVER GUJ E RAJ MP S HARY UP BHR JHRKND CHTGH BD AND N/HOOD (.)

**FOG/LOW CLOUDS:-**

INSAT-3D DAYTIME MICROPHYSICS AT 0600 UTC INDICATES ISOLATED FOG/LOW CLOUDS OVER EXT NW PJB ADJ NE PAK (.)



### **CLOUDS DESCRIPTION WITHIN INDIA:-**

#### **NORTH:-**

**SCT LOW/MED CLOUDS WITH EMBDD ISOL WK CONVTN OVER W AND SE UP (.) SCT LOW/MED CLOUDS OVER SE HARY REST UP AND DLH (.)**

#### **EAST:-**

**SCT LOW/MED CLOUDS WITH EMBDD ISOL WK TO MOD CONVTN OVER E BHR SHWB NE ARUPR (.) ISOL TO SCT LOW/MED CLOUDS OVER REST BHR CHTGH JHRKND ORISSA S GWB SKM AND REST NE STATES (.)**

#### **WEST:-**

**SCT TO BKN LOW/MED CLOUDS WITH EMBDD WK TO MOD CONVTN OVER GUJ SE RAJ (.) SCT LOW/MED CLOUDS WITH EMBDD WK CONVTN N M MAHA NC MP N MRTWD (.) ISOL LOW/MED CLOUDS OVER REST PARTS OF THE REGION (.)**

**SOUTH:-**

BKN LOW/MED CLOUDS WITH ISOL MOD TO INT CONVTN OVER S COTL TN AND WK TO MOD CONVTN OVER REST TN (.) SCT LOW/MED CLOUDS WITH ISOL WK CONVTN OVER RYLSM SCOTL AP (.) SCT LOW/MED CLOUDS OVER ANDAMAN & NICOBAR ILS LKSDP ILS (.)

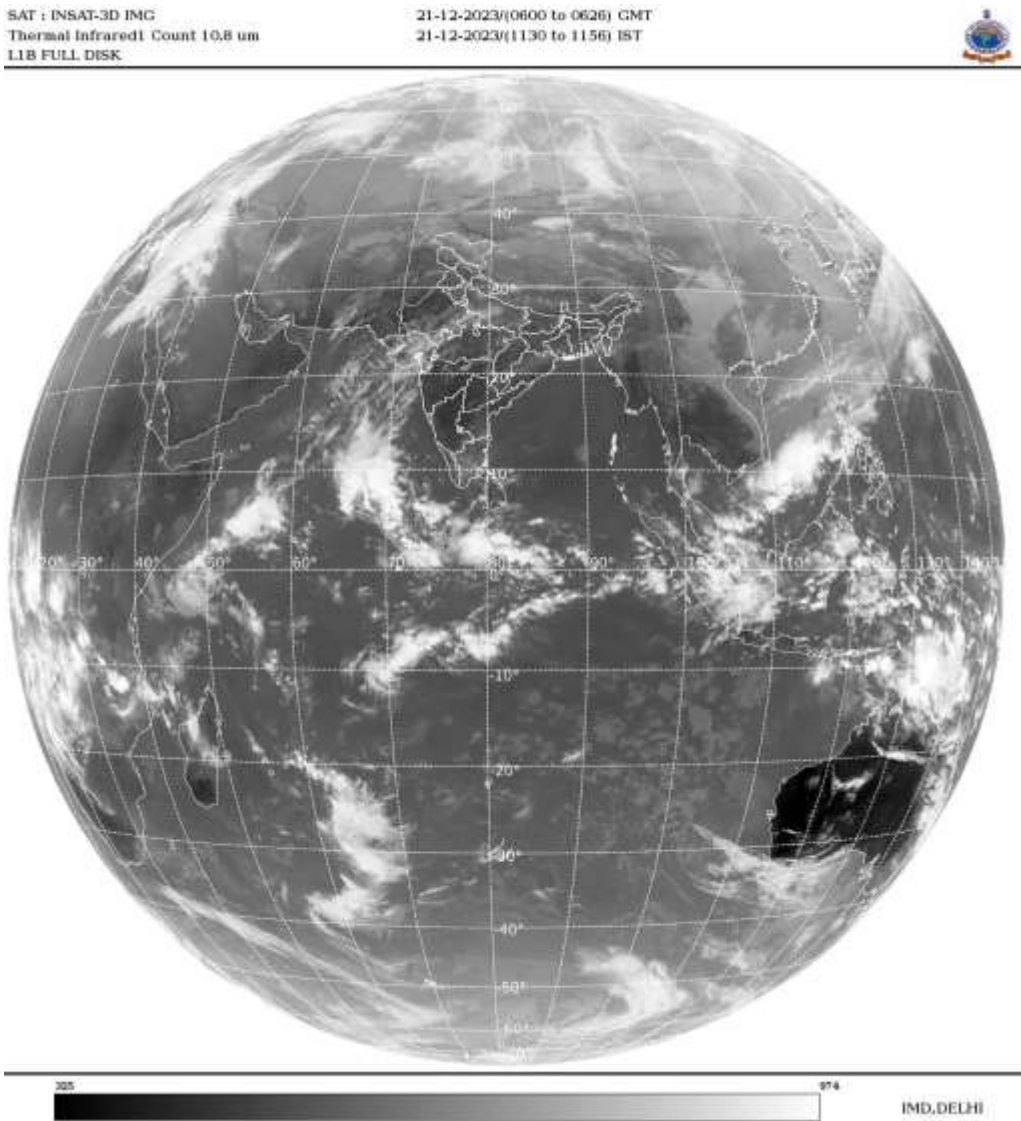
**ARABIAN SEA:-**

SCT TO BKN LOW/MED CLOUDS WITH EMBDD INT TO V INT CONVTN OVER SE AND SW ARSEA (.) SCT LOW/MED CLOUDS WITH EMBDD WK TO MOD CONVTN OVER COMORIN AREA BET 5.0 N TO 12.0 N LON 53.0E TO 75.0E (.) SCT LOW/MED CLOUDS WITH EMBDD WK TO MOD CONVTN OVER EC ARSEA (.)

**BAY OF BENGAL & ANDAMAN SEA:-**

SCT LOW/MED CLOUDS WITH EMBDD ISOL WK TO MOD CONVTN OVER SW BAY EXT SE ANDAMAN SEA (.)

**CLOUDS DESCRIPTION OUTSIDE INDIA:-**



SCT TO BKN LOW/MED CLOUDS WITH EMBDD MOD TO INT CONVTN OVER SRI LANKA MALDIVES S VIETNAM SUMATRA STR OF MALACCA BORNEO SOUTH CHINA SEA CELEBES ILS & SEA PHILIPPINES SULU SEA MADAGASCAR N MOZAMBIQUE CHANNEL AND OVER INDIAN OCEAN BET LAT 5.0N TO 10.0S LONG 43.0E TO 100.0E (.)

TOO 21/1310 HRS IST=

NNNN

**LEGEND:-**

	NORTH	J&K HP PJB HARY DLH UP UTRKND
--	-------	-------------------------------

REGION	EAST	BHR JHRKND CHTGH ORS WB SKM NORTH- EAST STATES
	WEST	RAJ MP GUJ MAHA GOA
	SOUTH	TLNGN AP KRNTK KER TN LKSDP ANDAMAN & NICOBAR ILS
CLOUD DISTRIBUTION	ISOL	ISOLATED (LESS THAN 25%)
	SCT	SCATTERED (25 TO 50%)
	BKN	BROKEN (51 TO 75%)
	SLD	SOLID (GREATER THAN 75%)
CLOUDS TOP TEMPERATURE	CTT	CLOUD TOP TEMPERATURE
CONVECTION	WK CONVTN	WEAK CONVECTION (CTT GREATER THAN -25°C)
	MOD CONVTN	MODERATE CONVECTION (CTT BETWEEN -25°C TO -40°C)
	INT CONVTN	INTENSE CONVECTION (CTT BETWEEN -41°C TO -70°C)
	V INT CONVTN	VERY INTENSE CONVECTION (CTT LESS THAN -70°C)
METEOROLOGICAL SUB- DIVISIONS, STATES & UNION TERITORIES	ARUPR	ARUNACHAL PRADESH
	BHR	BIHAR
	CHTGH	CHHATTISGARH
	COTL AP	COASTAL ANDHRA PRADESH
	COTL KRNTK	COASTAL KARNATAKA
	COTL ORS	COASTAL ORISSA
	GUJ	GUJARAT
	GWB	GANGETIC WEST BENGAL
	HARY	HARYANA
	DLH	DELHI
	HP	HIMACHAL PRADESH
	J&K	JAMMU AND KASHMIR
	JHRKND	JHARKHAND
	KER	KERALA
	KKN	KONKAN
	LKSDP	LAKSHADWEEP
	M MAHA	MADHYA MAHARASHTRA
	MAHA	MAHARASHTRA
	MANI	MANIPUR
	MEGHA	MEGHALAYA
	MIZO	MIZORAM
	MP	MADHYA PRADESH
	MRTHWD	MARATHWADA
	NAGA	NAGALAND
	N COTL AP	NORTH COASTAL ANDHRA PRADESH
	NIK	NORTH INTERIOR KARNATAKA
	ORS	ORISSA
	PJB	PUNJAB
	RAJ	RAJASTHAN

	<b>RYLSM</b>	<b>RAYALASEEMA</b>
	<b>SAU &amp; KUTCH</b>	<b>SAURASHTRA &amp; KUTCH</b>
	<b>SHWB</b>	<b>SUB-HIMALAYAN WEST BENGAL</b>
	<b>SIK</b>	<b>SOUTH INTERIOR KARNATAKA</b>
	<b>SKM</b>	<b>SIKKIM</b>
	<b>TLNGN</b>	<b>TELANGANA</b>
	<b>TN</b>	<b>TAMIL NADU</b>
	<b>TRP</b>	<b>TRIPURA</b>
	<b>UP</b>	<b>UTTAR PRADESH</b>
	<b>UTRKND</b>	<b>UTTARAKHAND</b>
	<b>VID</b>	<b>VIDHARBHA</b>
	<b>SHWB</b>	<b>SUB HIMALAYAN WEST BENGAL</b>
	<b>GWB</b>	<b>GANGETIC WEST BENGAL</b>
	<b>ARSEA</b>	<b>ARABIAN SEA</b>
	<b>ILS</b>	<b>ISLANDS</b>
<b>MISCELLANEOUS</b>	<b>ASSW</b>	<b>IN ASSOCIATION WITH</b>
	<b>ASSTD</b>	<b>ASSOCIATED</b>
	<b>LLC</b>	<b>LOW LEVEL CIRCULATION</b>
	<b>EMBDD</b>	<b>EMBEDDED</b>
	<b>N/HOOD</b>	<b>NEIGHBOURHOOD</b>
	<b>EXT</b>	<b>EXTREME</b>