



भारत मौसम विज्ञान विभाग  
पृथ्वी विज्ञान मंत्रालय  
India Meteorological Department  
Ministry of Earth Sciences

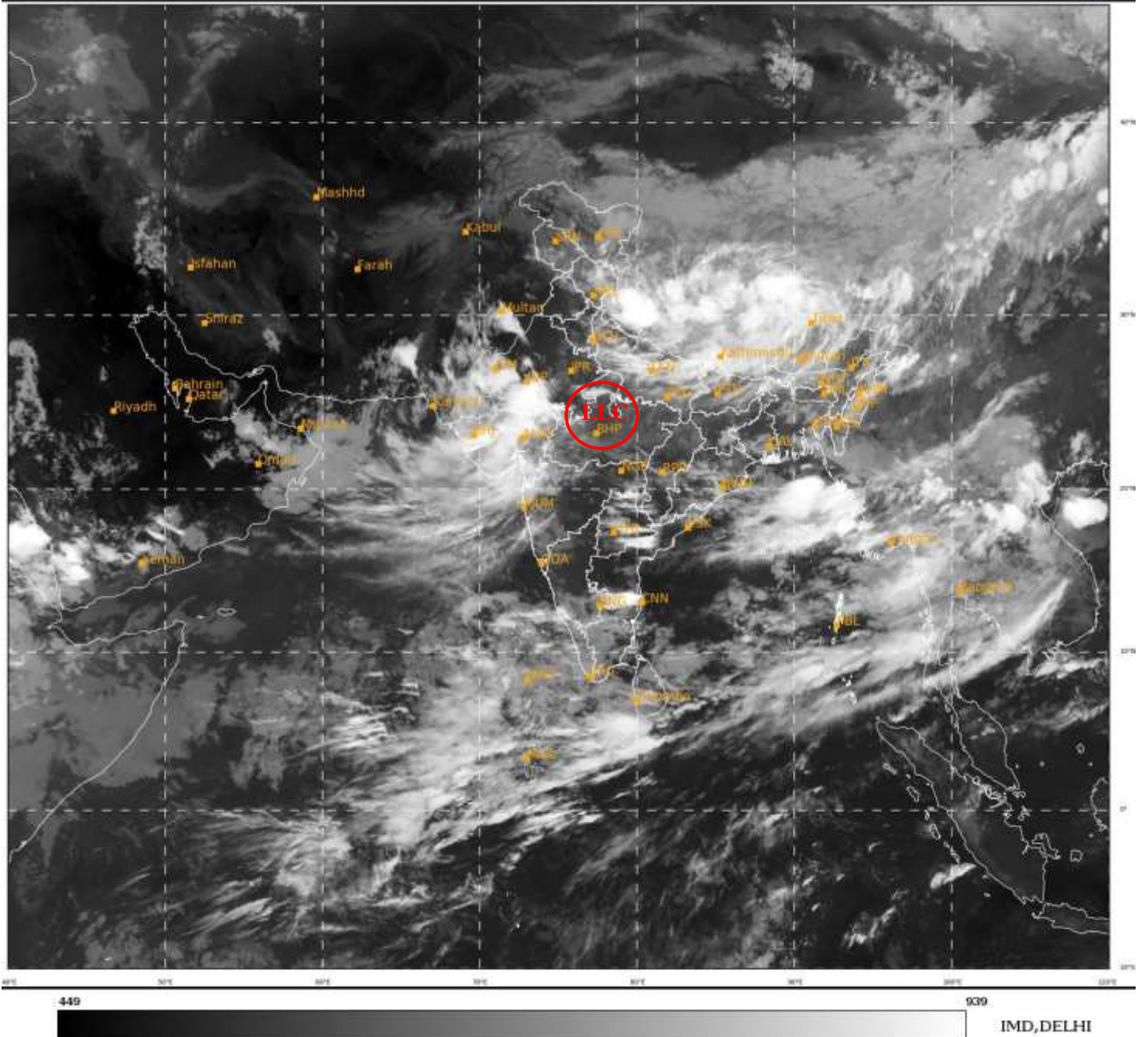


**SATELLITE BULLETIN BASED ON SATELLITE IMAGERIES  
AND PRODUCTS**

**25.07.2021 TIME 1800 UTC**

SAT : INSAT-3D IMG  
IMG\_TIR1 10.8 um  
LIC Mercator

25-07-2021/(1700 to 1726) GMT  
25-07-2021/(2230 to 2256) IST



TCIN50 DEMS 251800

SATELLITE BULLETIN BASED ON INSAT-3D PIC OF 251700 UTC (.)

REGION COVERED BETWEEN LAT 50.0°N TO 30.0°S AND LONG 40.0°E TO 125.0°E (.)

**SATLIENT FEATURES:-**

**LLC OVER CENTRAL PARTS OF NORTH MP AND N/HOOD:-**

LLC OVER CENTRAL PARTS OF N MP & N/HOOD (.) ASSTD SCT TO BKN LOW/MED CLOUDS WITH EMBDD INT TO V INT CONVTN OVER S RAJ GUJ (MINIMUM CTT MINUS 93 DEG CEL) AND MOD TO INT COVTN OVER NW MP (.)



INSAT-3DR 25-JUL-2021 16:45 WV IMG

WATER VAPOUR WIND

(1Kt = 0.5 m/s)

10 Kt

15 Kt

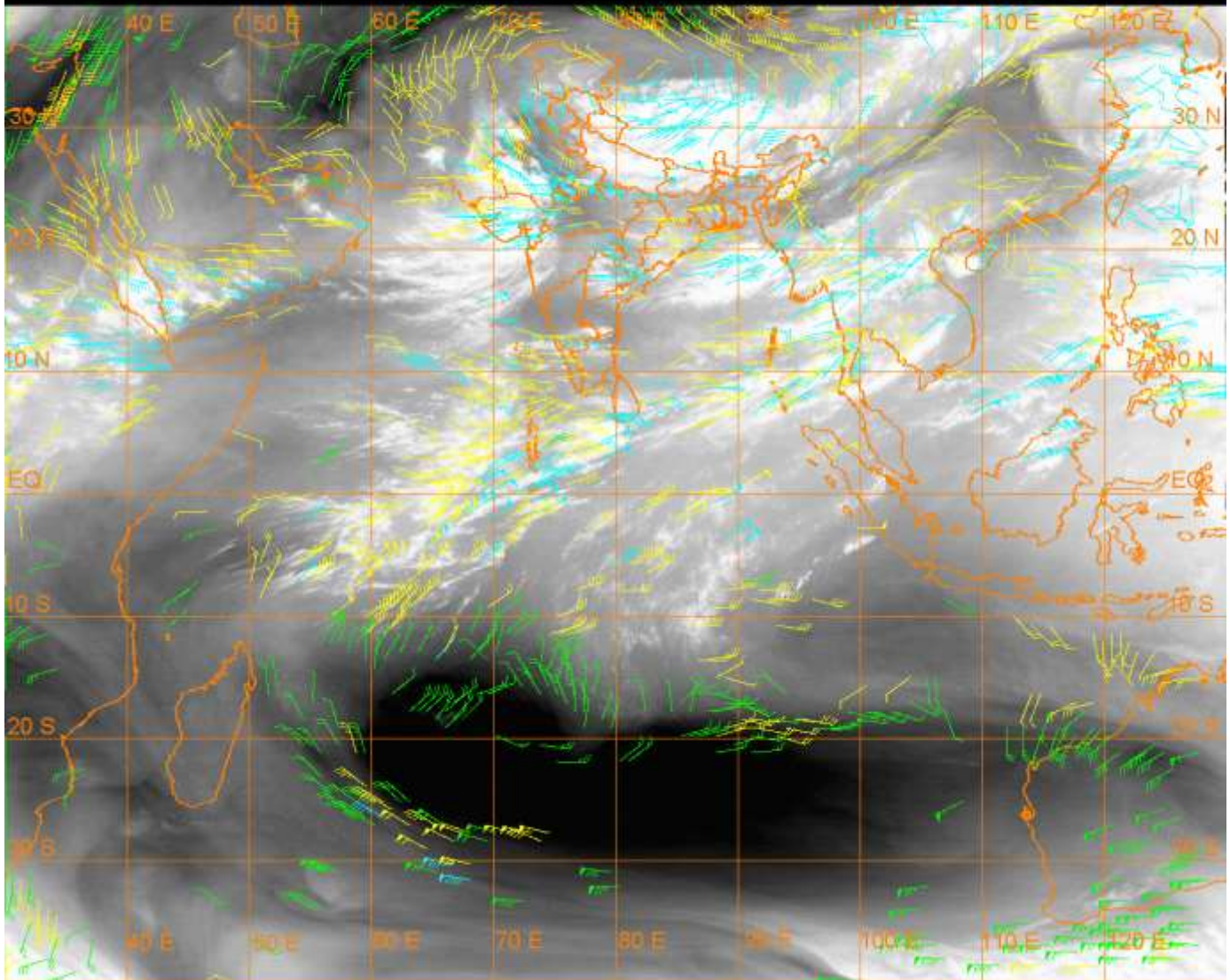
20 Kt

50 Kt

100-250 hPa

251-350 hPa

351-500 hPa



### CLOUDS DESCRIPTION WITHIN INDIA:-

#### NORTH:-

SCT TO BKN LOW/MED CLOUDS WITH EMBDD INT TO V INT CONVTN OVER N UTRKND (MINIMUM CTT MINUS 93 DEG C) N UP (MINIMUM CTT MINUS 86 DEG C) (.) SCT LOW/MED CLOUDS WITH EMBDD MOD TO INT CONVTN OVER SW LADAKH E HP S UTRKND (.) SCT LOW/MED CLOUDS WITH EMBDD WK TO MOD CONVTN OVER J&K REST LADAKH W HP N & SE PJB HARY DLH S UP (.) SCT LOW/MED CLOUDS OVER REST PJB (.)

#### EAST:-

SCT LOW/MED CLOUDS WITH EMBDD INT TO V INT CONVTN OVER NW BHR ADJ NEPAL (MINIMUM CTT MINUS 84 DEG C) SE ARUPR (MINIMUM CTT MINUS 89 DEG C) (.) SCT LOW/MED CLOUDS WITH EMBDD MOD TO INT CONVTN OVER NE BHR S CHTGH EC ORS SHWB SKM ASSAM REST ARUPR NAGA MANI & EXT NW BD (.) SCT LOW/MED CLOUDS WITH EMBDD WK TO MOD CONVTN OVER S BHR JHRKND N CHTGH GWB REST NE STATES & REST BD (.)

#### WEST:-

SCT TO BKN LOW/MED CLOUDS WITH EMBDD INT TO V INT CONVTN OVER S RAJ (MINIMUM CTT MINUS 93 DEG C) GUJ (MINIMUM CTT MINUS 86 DEG C) (.) SCT LOW/MED CLOUDS WITH EMBDD MOD TO INT CONVTN OVER N RAJ NW MP NORTH MADHYA MAHA S VID KKN AND WK TO MOD CONVTN OVER REST MP REST MAHA (.) SCT LOW/MED CLOUDS OVER GOA (.)

#### SOUTH:-

SCT LOW/MED CLOUDS WITH EMBDD INT TO V INT CONVTN OVER N COTL AP (MINIMUM CTT MINUS 86 DEG C) S RYLSM ADJ EXT S COTL AP EXT NE TN (MINIMUM CTT MINUS 91 DEG C) (.) SCT LOW/MED CLOUDS WITH EMBDD MOD TO INT CONVTN OVER S SIK TLNGN N KER (.) SCT LOW/MED CLOUDS WITH EMBDD WK TO MOD CONVTN OVER REST COTL AP S KER REST TN LKSDP ANDAMAN & NICOBAR ILS AND ISOL WK CONVTN OVER REST KRNTK REST RYLSM (.)

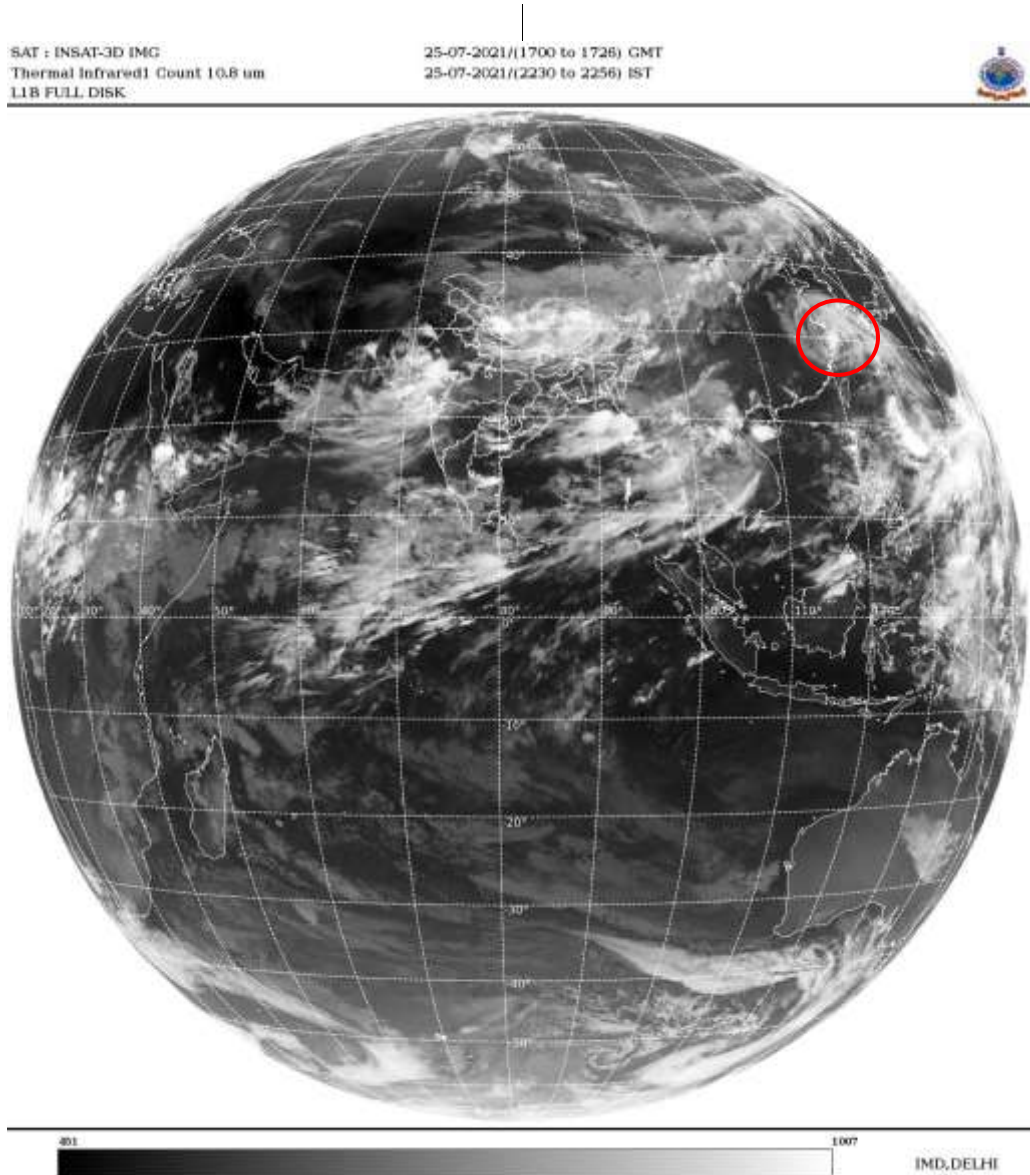
**ARABIAN SEA:-**

SCT LOW/MED CLOUDS WITH EMBDD INT TO V INT CONVTN OVER GULF OF KUTCH & GULF OF CAMBAY (.) SCT LOW/MED CLOUDS WITH EMBDD MOD TO INT CONVTN OVER ARSEA & COMORIN (.)

**BAY OF BENGAL & ANDAMAN SEA:-**

SCT LOW/MED CLOUDS WITH EMBDD INT TO V INT CONVTN OVER NE ADJ EC BAY AND MOD TO INT CONVTN OVER REST BAY ANDAMAN SEA (.)

**CLOUDS DESCRIPTION OUTSIDE INDIA:-**



**VORTEX (IN-FA) OVER EAST CHINA SEA & N/HOOD:-**

VORTEX (IN-FA) OVER EAST CHINA SEA & N/HOOD CENTERED NEAR **30.4N/121.1E** (.) INTENSITY **T3.5/3.5** (.) ASSTD BKN LOW/MED CLOUDS WITH EMBDD INT TO V INT CONVTN OVER AREA BET LAT 27.0N TO 35.0N LONG 121.5E TO 128.0E (.)

SCT LOW/MED CLOUDS WITH EMBDD MOD TO INT CONVTN OVER SRI LANKA MALDIVES PAK NEPAL BHUTAN TIBET CHINA YELLOW SEA E CHINA SEA MYANMAR THAILAND GULF OF THAILAND CAMBODIA LAOS N VIETNAM GULF OF TONKIN HAINAN N SUMATRA STR OF MALACCA MALAY PENINSULA N BORNEO S CHINA SEA CELEBES SEA PHILIPPINES SULU SEA AND OVER INDIAN OCEAN BET LAT 5.0N TO 8.5S LONG 54.0E TO 100.0E (.)

TOO 25/2330EF=

NNNN

**LEGEND:-**

<b>REGION</b>	<b>NORTH</b>	<b>J&amp;K HP PJB HARY DLH UP UTRKND</b>
	<b>EAST</b>	<b>BHR JHRKND CHTGH ORS WB SKMNORTH- EAST STATES</b>
	<b>WEST</b>	<b>RAJ MP GUJ MAHA GOA</b>
	<b>SOUTH</b>	<b>TLNGN AP KRNTK KER TN LKSDP ANDAMAN &amp; NICOBAR ILS</b>

<b>CLOUD DISTRIBUTION</b>	<b>ISOL</b>	<b>ISOLATED (LESS THAN 25%)</b>
	<b>SCT</b>	<b>SCATTERED (25 TO 50%)</b>
	<b>BKN</b>	<b>BROKEN (51 TO 75%)</b>
	<b>SLD</b>	<b>SOLID (GREATER THAN 75%)</b>
<b>CLOUDS TOP TEMPERATURE</b>	<b>CTT</b>	<b>CLOUD TOP TEMPERATURE</b>
<b>CONVECTION</b>	<b>WK CONVTN</b>	<b>WEAK CONVECTION (CTT GREATER THAN -25°C)</b>
	<b>MOD CONVTN</b>	<b>MODERATE CONVECTION (CTT BETWEEN -25°C TO -40°C)</b>
	<b>INT CONVTN</b>	<b>INTENSE CONVECTION (CTT BETWEEN -41°C TO -70°C)</b>
	<b>V INT CONVTN</b>	<b>VERY INTENSE CONVECTION (CTT LESS THAN -70°C)</b>
<b>METEOROLOGICAL SUB-DIVISIONS, STATES &amp; UNION TERRITORIES</b>	<b>ARUPR</b>	<b>ARUNACHAL PRADESH</b>
	<b>BHR</b>	<b>BIHAR</b>
	<b>CHTGH</b>	<b>CHHATTISGARH</b>
	<b>COTL AP</b>	<b>COASTAL ANDHRA PRADESH</b>
	<b>COTL KRNTK</b>	<b>COASTAL KARNATAKA</b>
	<b>COTL ORS</b>	<b>COASTAL ORISSA</b>
	<b>GUJ</b>	<b>GUJARAT</b>
	<b>GWB</b>	<b>GANGETIC WEST BENGAL</b>
	<b>HARY</b>	<b>HARYANA</b>
	<b>DLH</b>	<b>DELHI</b>
	<b>HP</b>	<b>HIMACHAL PRADESH</b>
	<b>J&amp;K</b>	<b>JAMMU AND KASHMIR</b>
	<b>JHRKND</b>	<b>JHARKHAND</b>
	<b>KER</b>	<b>KERALA</b>
	<b>KKN</b>	<b>KONKAN</b>
	<b>LKSDP</b>	<b>LAKSHADWEEP</b>
	<b>M MAHA</b>	<b>MADHYA MAHARASHTRA</b>
	<b>MAHA</b>	<b>MAHARASHTRA</b>
	<b>MANI</b>	<b>MANIPUR</b>
	<b>MEGHA</b>	<b>MEGHALAYA</b>
	<b>MIZO</b>	<b>MIZORAM</b>
<b>MP</b>	<b>MADHYA PRADESH</b>	
	<b>MRTHWD</b>	<b>MARATHWADA</b>
	<b>NAGA</b>	<b>NAGALAND</b>
	<b>N COTL AP</b>	<b>NORTH COASTAL ANDHRA PRADESH</b>

	<b>NIK</b>	<b>NORTH INTERIOR KARNATAKA</b>
	<b>ORS</b>	<b>ORISSA</b>
	<b>PJB</b>	<b>PUNJAB</b>
	<b>RAJ</b>	<b>RAJASTHAN</b>
	<b>RYLSM</b>	<b>RAYALASEEMA</b>
	<b>SAU &amp; KUTCH</b>	<b>SAURASHTRA &amp; KUTCH</b>
	<b>SHWB</b>	<b>SUB-HIMALAYAN WEST BENGAL</b>
	<b>SIK</b>	<b>SOUTH INTERIOR KARNATAKA</b>
	<b>SKM</b>	<b>SIKKIM</b>
	<b>TLNGN</b>	<b>TELANGANA</b>
	<b>TN</b>	<b>TAMIL NADU</b>
	<b>TRP</b>	<b>TRIPURA</b>
	<b>UP</b>	<b>UTTAR PRADESH</b>
	<b>UTRKN</b>	<b>UTTARAKHAND</b>
	<b>VID</b>	<b>VIDHARBHA</b>
	<b>SHWB</b>	<b>SUB HIMALAYAN WEST BENGAL</b>
	<b>GWB</b>	<b>GANGETIC WEST BENGAL</b>
	<b>ARSEA</b>	<b>ARABIAN SEA</b>
	<b>ILS</b>	<b>ISLANDS</b>
<b>MISCELLANEOUS</b>	<b>ASSW</b>	<b>IN ASSOCIATION WITH</b>
	<b>ASSTD</b>	<b>ASSOCIATED</b>
	<b>LLC</b>	<b>LOW LEVEL CIRCULATION</b>
	<b>EMBDD</b>	<b>EMBEDDED</b>
	<b>N/HOOD</b>	<b>NEIGHBOURHOOD</b>
	<b>EXT</b>	<b>EXTREME</b>