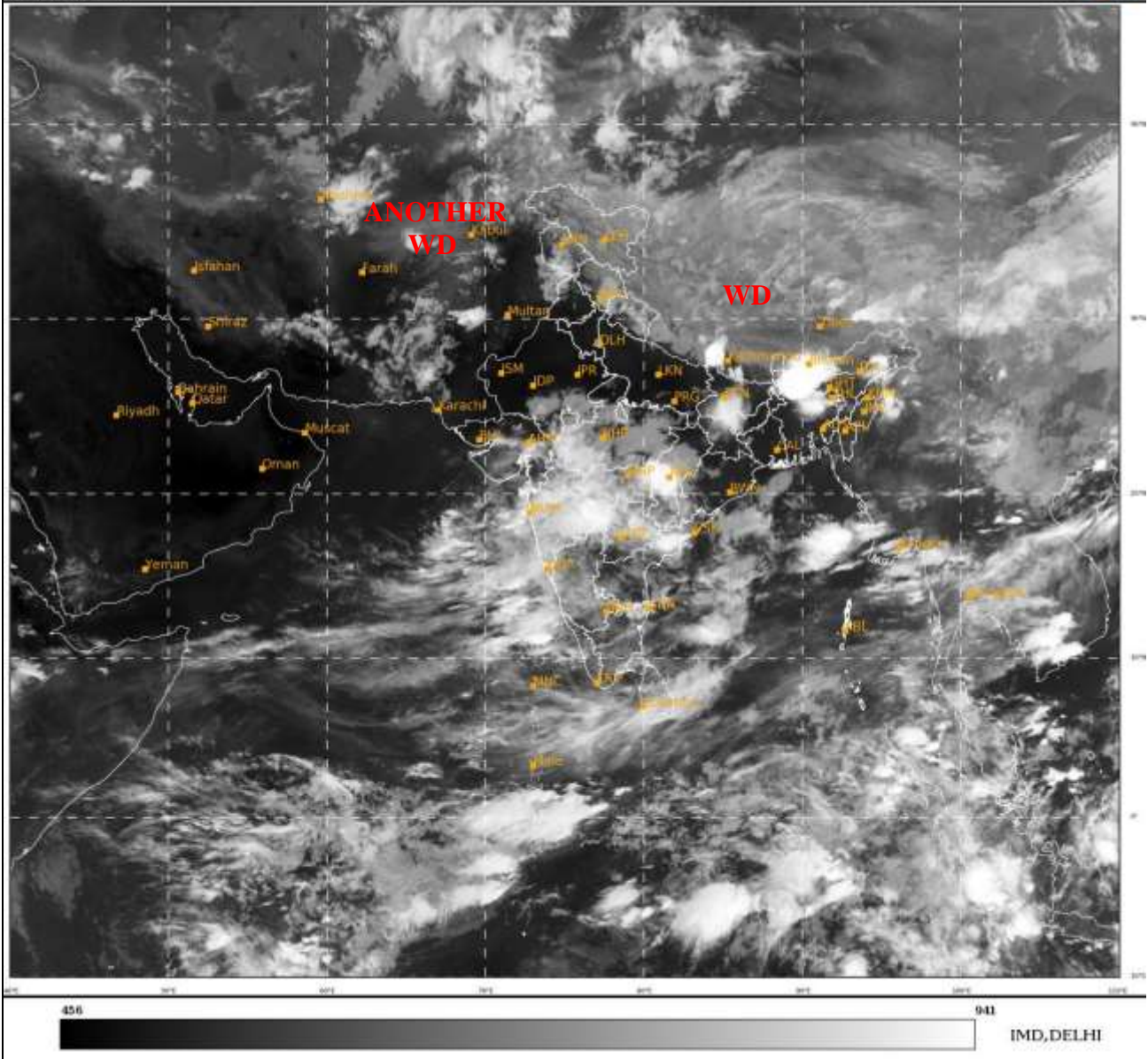




**SATELLITE BULLETIN BASED ON SATELLITE
IMAGERIES AND PRODUCTS**
11.06.2022 TIME 1800 UTC

SAT : INSAT-3D IMG
IMG_TIR1 10.8 um
LIC Mercator

11-06-2022/(1700 to 1726) GMT
11-06-2022/(2230 to 2256) IST



TCIN50 DEMS 111800

SATELLITE BULLETIN BASED ON INSAT-3D PIC OF 111700 UTC (.)

REGION COVERED BETWEEN LAT 50.0°N TO 30.0°S AND LONG 40.0°E TO 125.0°E (.)

SALIENT FEATURES:-

1. CONVECTIVE CLOUD CLUSTER OVER WEST-CENTRAL BAY ADJ N COTL AP NOW LIES OVER N COTL AP (MINIMUM CTT MINUS **87** DEG CEL) (.)
2. CONVECTIVE CLOUD MASS OVER EAST ARABIAN SEA WITH CONVECTIVE ACTIVITY ALONG WEST COAST LKSDP ILS PERSISTS (MINIMUM CTT MINUS **85** DEG CEL) (.)

THUNDERSTORM / CONVECTIVE ACTIVITY:-

THUNDERSTORM / CONVECTIVE ACTIVITIES OBSERVED OVER BHR N JHRKND SHWB MEGHA ASSAM ARUPR NAGA SW ORS CHTGH MP SE RAJ GUJ MAHA GOA KRNTK TLNGN RYLSM N COTL AP NE TN LKSDP ILS (.)

WESTERN DISTURBANCE (WD):-

SCT MULTILAYERED CLOUDS OVER TIBET ADJ CHINA IN ASSW **WD** OVER THE AREA (.)

SCT MULTILAYERED CLOUDS OVER AFGAN PAK J&K LADAKH HP N PJB UTRKND AND N/HOOD IN ASSW **ANOTHER WD** OVER THE AREA (.)

DUST:-

DUST NOT OBSERVED OVER INDIAN REGION (.)

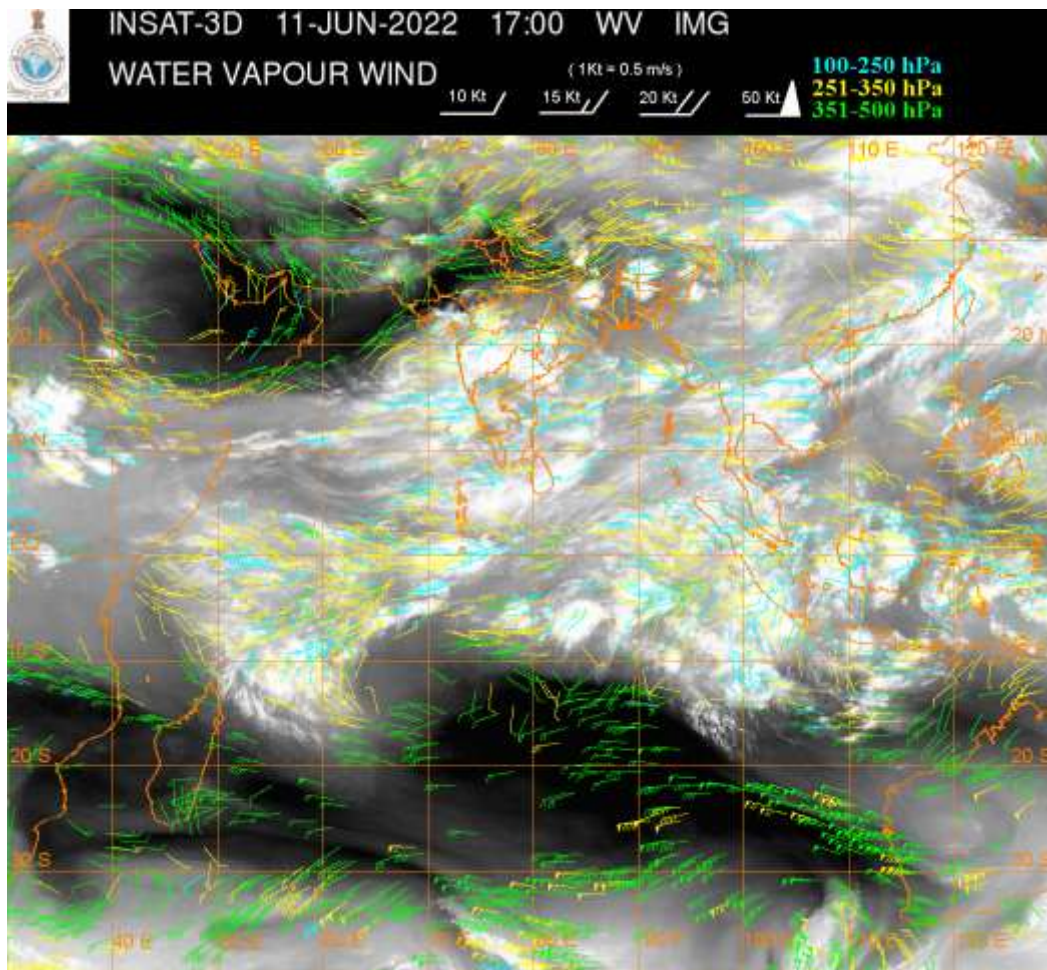
PRECIPITATION NOWCASTING:-

(BASED ON SCOPE NOWCASTING TOOL AT 1700 UTC AT A LEAD TIME OF 03 HRS (MM/HR):-

RAINFALL UP TO **10-20 MM** LIKELY OVER SW BHR N SHWB N ASSAM W MEGHA C CHTGH SW MP C GUJ N KKN NORTH MADHYA MAHA MRTHWD C COTL AP LKSDP ILS AREA (.)

RAINFALL UP TO **5-10 MM** LIKELY OVER EXT EC UP SC ARUPR SE RAJ SE GUJ REST MAHA TLNGN (.)

RAINFALL UP TO **0.5-5 MM** LIKELY OVER EXT NW LADAKH EXT SW ORS EXT SE MP GOA N COTL KRNTK SIK S RYLSM E TN (.)



CLOUDS DESCRIPTION WITHIN INDIA:-

NORTH:-

SCT LOW/MED CLOUDS WITH EMBDD MOD TO INT CONVTN OVER S J&K W UTRKND AND WK TO MOD CONVTN OVER LADAKH N J&K HP E UTRKND N PJB S & EXT N UP (.)

EAST:-

SCT TO BKN LOW/MED CLOUDS WITH EMBDD INT TO V INT CONVTN OVER C CHTGH SHWB ADJ W ASSAM E ASSAM ADJ ARUPR MEGHA & N BD (MINIMUM CTT MINUS **93** DEG C) (.) SCT LOW/MED CLOUDS WITH EMBDD MOD TO INT CONVTN OVER BHR N JHRKND REST CHTGH SW ORS REST ARUPR NAGA AND WK CONVTN OVER S JHRKND REST ORS NW GWB SKM REST NE STATES (.) SCT LOW/MED CLOUDS OVER REST GWB (.)

WEST:-

SCT TO BKN LOW/MED CLOUDS WITH EMBDD INT TO V INT CONVTN OVER EXT SE MP MRTHWD VID (MINIMUM CTT MINUS **85** DEG C) (.) SCT TO BKN LOW/MED CLOUDS WITH EMBDD MOD TO INT CONVTN OVER SE RAJ W MP GUJ MADHYA MAHA KKN AND WK TO MOD CONVTN OVER REST E MP GOA (.) SCT LOW/MED CLOUDS OVER NE & EXT SW RAJ (.)

SOUTH:-

SCT LOW/MED CLOUDS WITH EMBDD INT TO V INT CONVTN OVER N COTL AP (MINIMUM CTT MINUS **87** DEG C) LKSDP ILS (MINIMUM CTT MINUS **80** DEG C) (.) SCT LOW/MED CLOUDS WITH EMBDD MOD TO INT CONVTN OVER KRNTK TLNGN S RYLSM C KER NE TN AND WK TO MOD CONVTN OVER N RYLSM S COTL AP REST KER REST TN (.) SCT LOW/MED CLOUDS OVER ANDAMAN & NICOBAR ILS (.)

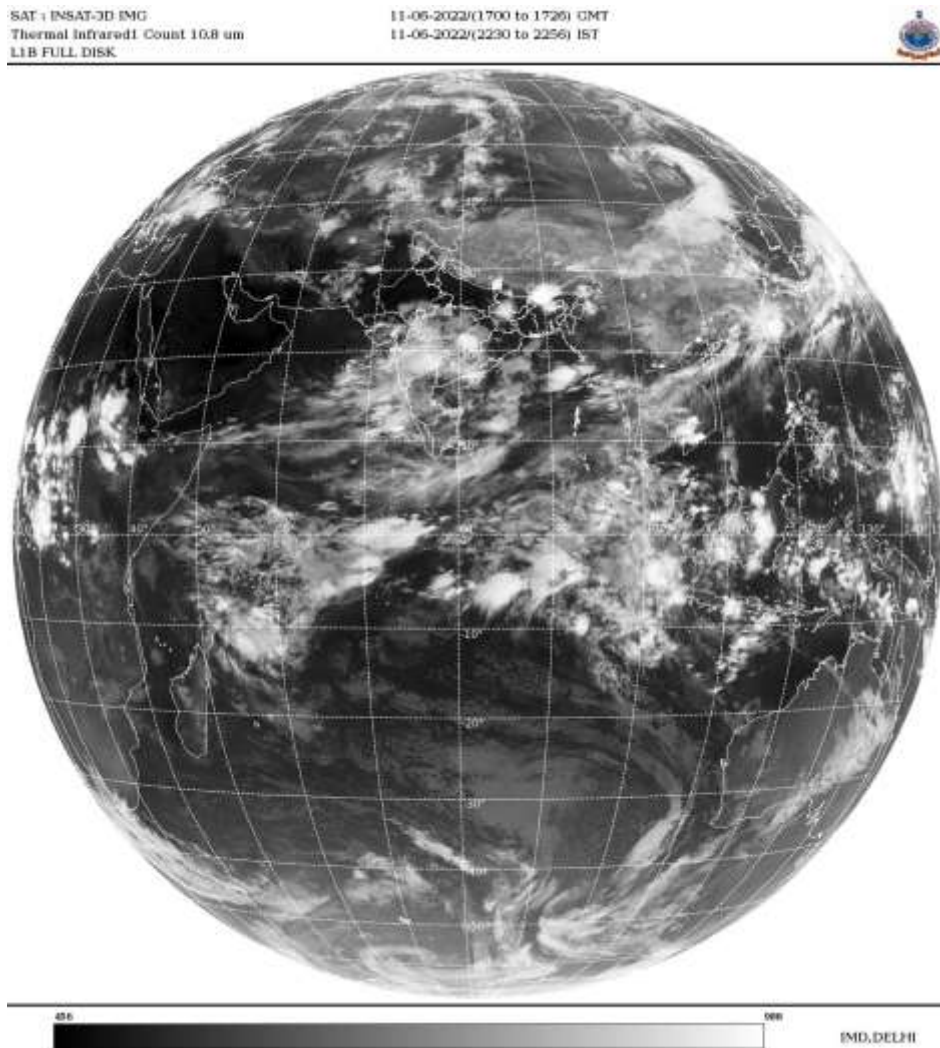
ARABIAN SEA:-

SCT LOW/MED CLOUDS WITH EMBDD INT TO V INT CONVTN OVER EAST ARSEA LKSDP ILS AREA AND MOD TO INT CONVTN OVER SW ARSEA & COMORIN AREA (.) SCT LOW/MED CLOUDS WITH EMBDD WK TO MOD CONVTN OVER WC ARSEA (.)

BAY OF BENGAL & ANDAMAN SEA:-

SCT LOW/MED CLOUDS WITH EMBDD INT TO V INT CONVTN OVER EC BAY AND MOD TO INT CONVTN OVER WEST BAY ANDAMAN SEA (.) SCT LOW/MED CLOUDS WITH EMBDD WK TO MOD CONVTN OVER NE & SE BAY (.)

CLOUDS DESCRIPTION OUTSIDE INDIA:-



SCT LOW/MED CLOUDS WITH EMBDD MOD TO INT CONVTN OVER SRI LANKA PALK STR GULF OF MANNAR MALDIVES PAK NEPAL BHUTAN TIBET CHINA YELLOW SEA E CHINA SEA TAIWAN MYANMAR THAILAND GULF OF THAILAND CAMBODIA LAOS VIETNAM GULF OF TONKIN HAINAN SUMATRA STR OF MALACCA MALAYSIA BORNEO SOUTH CHINA SEA JAVA ILS & SEA CELEBES ILS & SEA PHILIPPINES SULU SEA AND OVER INDIAN OCEAN BET LAT 5.0N TO 18.0S LONG 50.0E TO 115.0E (.)

TOO 11/2340 HRS IST=

NNNN

LEGEND:-

REGION	NORTH	J&K HP PJB HARY DLH UP UTRKND
	EAST	BHR JHRKND CHTGH OR WB SKM NORTH- EAST STATES
	WEST	RAJ MP GUJ MAHA GOA
	SOUTH	TLNGN AP KRNTK KER TN LKSDP ANDAMAN & NICOBAR ILS

CLOUD DISTRIBUTION	ISOL	ISOLATED (LESS THAN 25%)
	SCT	SCATTERED (25 TO 50%)
	BKN	BROKEN (51 TO 75%)
	SLD	SOLID (GREATER THAN 75%)
CLOUDS TOP TEMPERATURE	CTT	CLOUD TOP TEMPERATURE
CONVECTION	WK CONVTN	WEAK CONVECTION (CTT GREATER THAN -25°C)
	MOD CONVTN	MODERATE CONVECTION (CTT BETWEEN -25°C TO -40°C)
	INT CONVTN	INTENSE CONVECTION (CTT BETWEEN -41°C TO -70°C)
	V INT CONVTN	VERY INTENSE CONVECTION (CTT LESS THAN -70°C)
METEOROLOGICAL SUB-DIVISIONS, STATES & UNION TERRITORIES	ARUPR	ARUNACHAL PRADESH
	BHR	BIHAR
	CHTGH	CHHATTISGARH
	COTL AP	COASTAL ANDHRA PRADESH
	COTL KRNTK	COASTAL KARNATAKA
	COTL ORS	COASTAL ORISSA
	GUJ	GUJARAT
	GWB	GANGETIC WEST BENGAL
	HARY	HARYANA
	DLH	DELHI
	HP	HIMACHAL PRADESH
	J&K	JAMMU AND KASHMIR
	JHRKND	JHARKHAND
	KER	KERALA
	KKN	KONKAN
	LKSDP	LAKSHADWEEP
	M MAHA	MADHYA MAHARASHTRA
	MAHA	MAHARASHTRA
	MANI	MANIPUR
	MEGHA	MEGHALAYA
MIZO	MIZORAM	
MP	MADHYA PRADESH	
	MRTHWD	MARATHWADA

	NAGA	NAGALAND
	N COTL AP	NORTH COASTAL ANDHRA PRADESH
	NIK	NORTH INTERIOR KARNATAKA
	ORS	ORISSA
	PJB	PUNJAB
	RAJ	RAJASTHAN
	RYLSM	RAYALASEEMA
	SAU & KUTCH	SAURASHTRA & KUTCH
	SHWB	SUB-HIMALAYAN WEST BENGAL
	SIK	SOUTH INTERIOR KARNATAKA
	SKM	SIKKIM
	TLNGN	TELANGANA
	TN	TAMIL NADU
	TRP	TRIPURA
	UP	UTTAR PRADESH
	UTRKN D	UTTARAKHAND
	VID	VIDHARBHA
	SHWB	SUB HIMALAYAN WEST BENGAL
	GWB	GANGETIC WEST BENGAL
	ARSEA	ARABIAN SEA
	ILS	ISLANDS
MISCELLANEOUS	ASSW	IN ASSOCIATION WITH
	ASSTD	ASSOCIATED
	LLC	LOW LEVEL CIRCULATION
	EMBDD	EMBEDDED
	N/HOOD	NEIGHBOURHOOD
	EXT	EXTREME