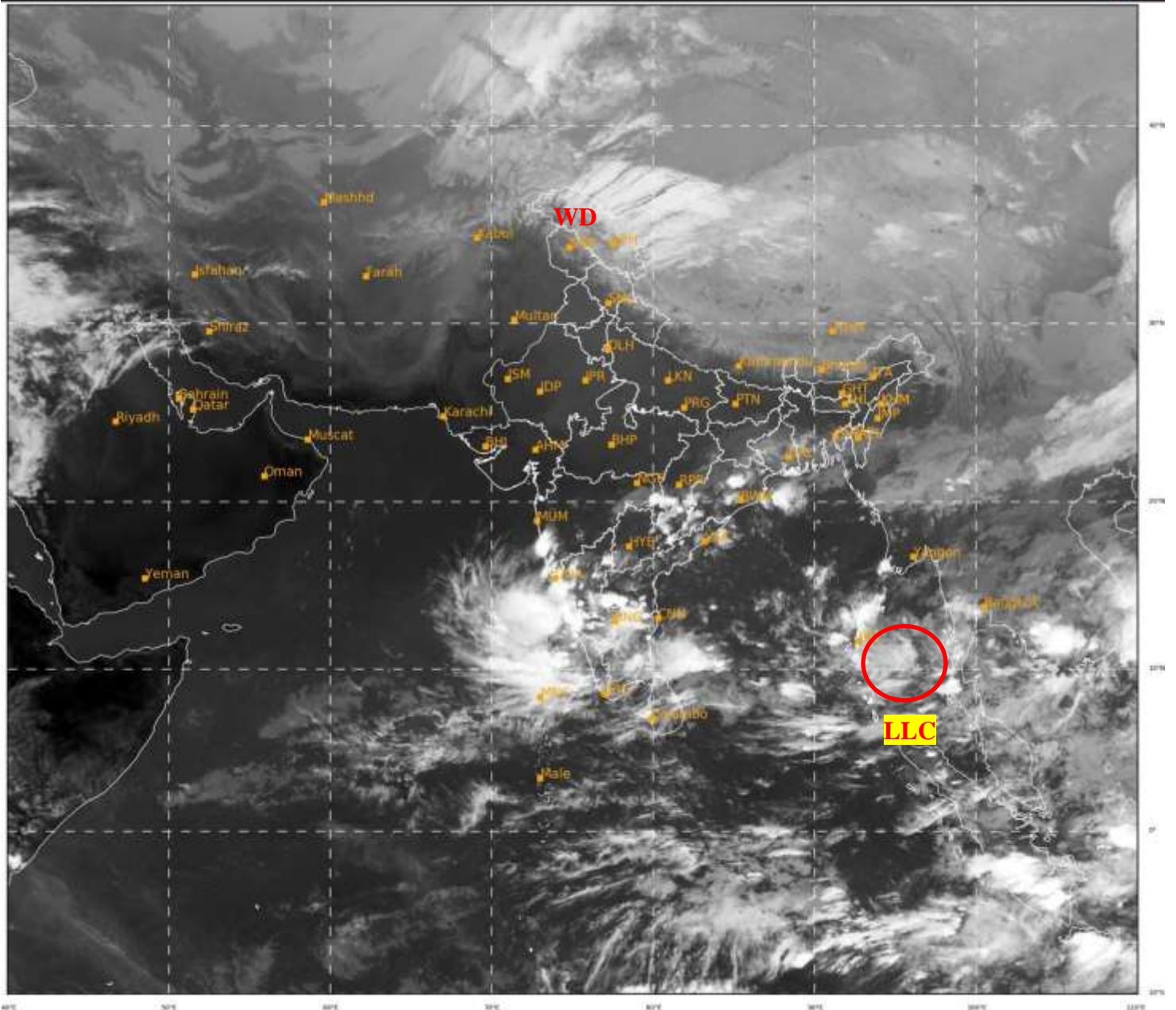




**SATELLITE BULLETIN BASED ON SATELLITE
IMAGERIES AND PRODUCTS**
14.11.2021 TIME 1200 UTC

SAT : INSAT-3D IMG
IMG_TIR1 10.8 um
LIC Mercator

14-11-2021/(1200 to 1226) GMT
14-11-2021/(1730 to 1756) IST



430

940

IMD, DELHI

TCIN50 DEMS 141200

SATELLITE BULLETIN BASED ON INSAT-3D PIC OF 141200 UTC (.)

REGION COVERED BETWEEN LAT 50.0°N TO 30.0°S AND LONG 40.0°E TO 125.0°E (.)

SALIENT FEATURES:-

LLC OVER CENTRAL PARTS OF ANDAMAN SEA AND N/HOOD:-

LOW LEVEL CIRCULATION (LLC) OVER CENTRAL PARTS OF ANDAMAN SEA & N/HOOD (.) ASSTD SCT TO BKN LOW/MED CLOUDS WITH EMBDD INT TO V INT CONVTN OVER ANDAMAN SEA AND N/HOOD (.) MINIMUM CTT MINUS 90 DEG C (.)

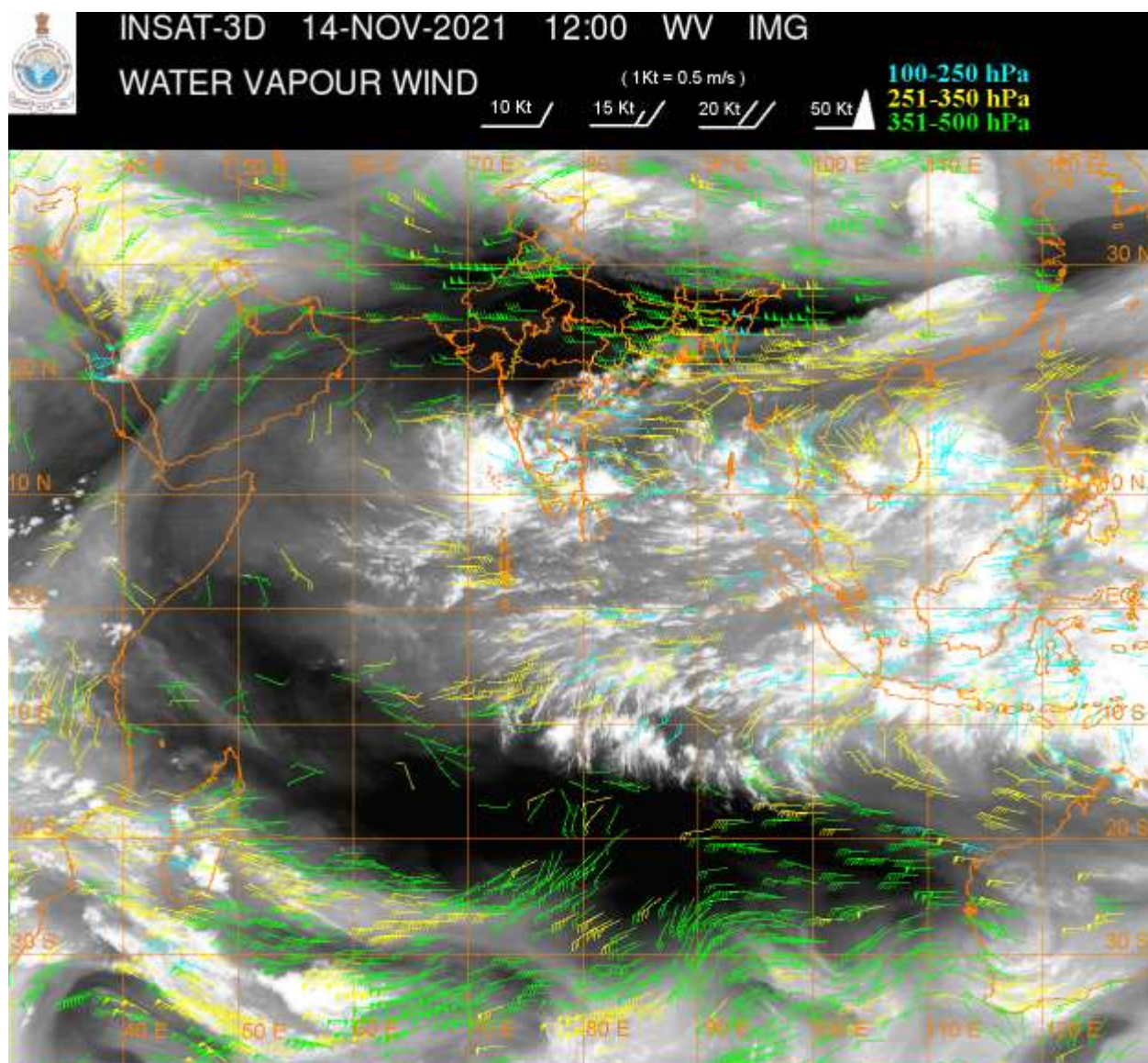
CONVECTION INCREASED/DECREASED IN SEA AREA (ARSEA/ BAY OF BENGAL):-

CONVECTION OVER LKSDP AREA & N/HOOD PERSISTS DURING PAST 3 HRS (.) NEW CONVECTIVE CELLS DEVELOPED OVER S KKN-GOA-KRNTK COAST (.) MINIMUM CTT MINUS 90 DEG C (.)

CONVECTION SLIGHTLY DECREASED OVER TAMIL NADU COAST DURING PAST 3 HRS AND CONVTN PERSISTS OVER SW BAY BET LAT 9.5N TO 11.5N WEST OF LONG 84.0E (.) MINIMUM CTT **MINUS 80** DEG C (.)

WESTERN DISTURBANCE (WD):-

SCT MULTILAYERED CLOUDS OVER EXTREME N PAK LADAKH AND N/HOOD IN ASSW **WD** OVER THE AREA (.)



CLOUDS DESCRIPTION WITHIN INDIA:-

NORTH:-

SCT LOW/MED CLOUDS WITH EMBDD WK TO MOD CONVTN OVER LADAKH N HP EXT N UTRKND (.) SCT LOW/MED CLOUDS OVER J&K REST HP REST N UTRKND (.)

EAST:-

SCT LOW/MED CLOUDS WITH EMBDD ISOL INT TO V INT CONVTN OVER S CHTGH N ORS AND MOD TO INT CONVTN OVER S ORS WC GWB (.)SCT LOW/MED CLOUDS WITH EMBDD ISOL WK TO MOD CONVTN OVER SE JHRKND REST GWB ARUPR S MANI MIZO TRP & S BD (.) SCT LOW/MED CLOUDS OVER N CHTGH N JHRKND S BHR SKM MEGHA SE ASSAM NAGA N MANI (.)

WEST:-

SCT LOW/MED CLOUDS WITH EMBDD INT TO V INT CONVTN OVER EC VID S KKN & GOA (.) SCT LOW/MED CLOUDS WITH EMBDD ISOL WK TO MOD CONVTN OVER S VID S MADHYA MAHA (.) SCT LOW/MED CLOUDS OVER REST MAHA (.)

SOUTH:-

SCT LOW/MED CLOUDS WITH EMBDD INT TO V INT CONVTN OVER N KER N TN ADJ S RYLSM EXT E TLNGN COTL KRNTK SIK N ANDAMAN ILS AND ISOL MOD TO INT CONVTN OVER REST KRNTK N COTL AP S KER REST TN LKSDP & NICOBAR ILS (.) SCT LOW/MED CLOUDS WITH EMBDD ISOL WK TO MOD CONVTN OVER EXT S TLNGN S ANDAMAN ILS (.) SCT LOW/MED CLOUDS OVER N TLNGN (.)

ARABIAN SEA:-

SCT TO BKN LOW/MED CLOUDS WITH EMBDD INT TO V INT CONVTN OVER SE ADJ EC ARSEA & LKSDP AREA (.) MINIMUM CTT **MINUS 90** DEG C (.)

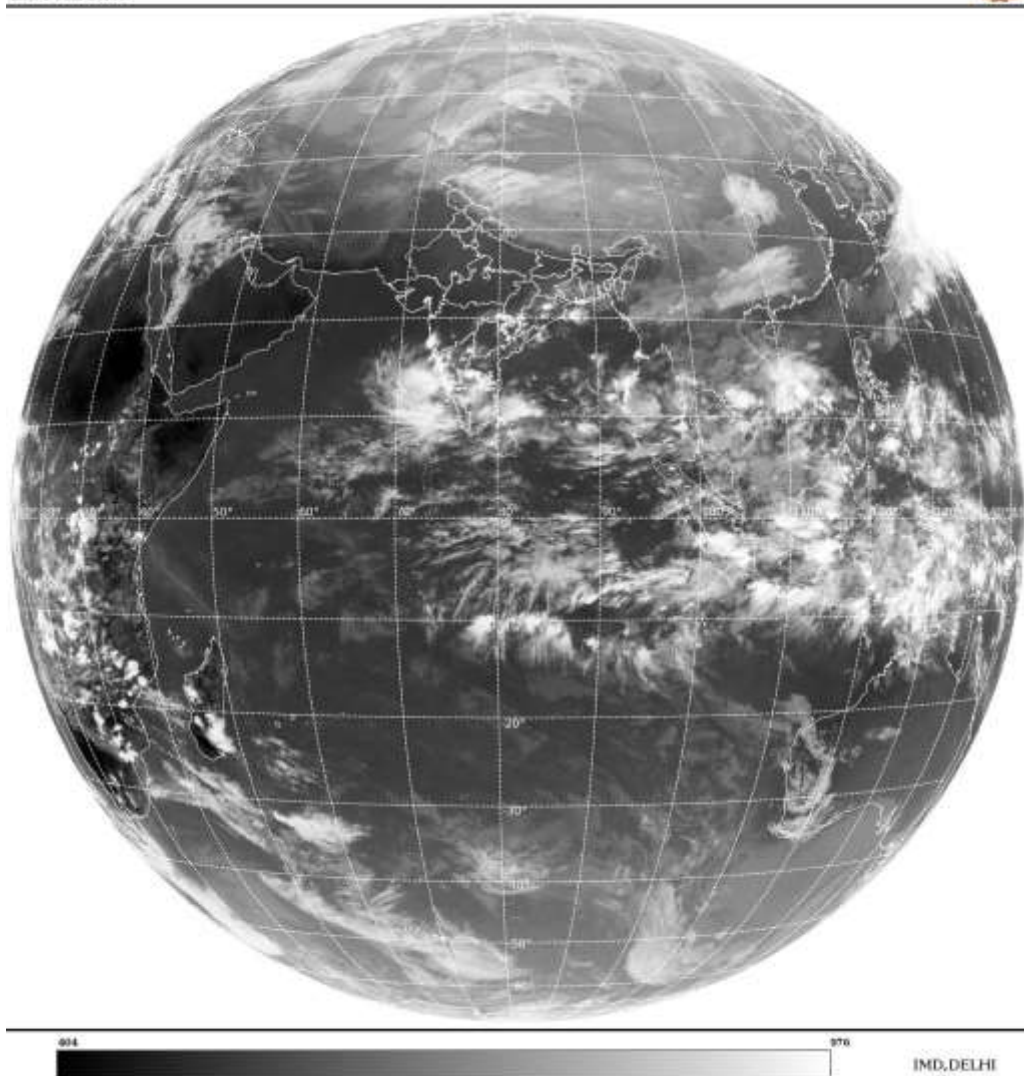
BAY OF BENGAL & ANDAMAN SEA:-

SCT TO BKN LOW/MED CLOUDS WITH EMBDD INT TO V INT CONVTN OVER NW& SW BAY N ANDAMAN SEA ADJ EC BAY (MINIMUM CTT **MINUS 82** DEG C) (.) SCT LOW/MED CLOUDS WITH EMBDD MOD TO INT CONVTN OVER SE BAY & S ANDAMAN SEA (.)

CLOUDS DESCRIPTION OUTSIDE INDIA:-

SAT : INSAT-3D IMG
Thermal Infrared1 Count 10.8 um
L1B FULL DISK

14-11-2021/(1200 to 1228) GMT
14-11-2021/(1730 to 1756) IST



SCT LOW/MED CLOUDS WITH EMBDD MOD TO INT CONVTN OVER SRI LANKA PALK STR GULF OF MANNAR N MALDIVES N TIBET ADJ CHINA C MYANMAR THAILAND GULF OF THAILAND CAMBODIA S VIETNAM SUMATRA STR OF MALACCA MALAYSIA BORNEO SOUTH CHINA SEA JAVA ILS & SEA CELEBES ILS & SEA PHILIPPINES SULU SEA MADAGASCAR MOZAMBIQUE CHANNEL AND OVER INDIAN OCEAN BET LAT 5.0N TO EQT LONG 60.0E TO 95.0E AND EQT TO LAT 16.5S LONG 73.0E TO 120.0E (.)

TOO 14/1845EF=

NNNN

LEGEND:-

	NORTH	J&K HP PJB HARY DLH UP UTRKND
--	-------	-------------------------------

REGION	EAST	BHR JHRKND CHTGH ORS WB SKM NORTH- EAST STATES
	WEST	RAJ MP GUJ MAHA GOA
	SOUTH	TLNGN AP KRNTK KER TN LKSDP ANDAMAN & NICOBAR ILS

CLOUD DISTRIBUTION	ISOL	ISOLATED (LESS THAN 25%)	
	SCT	SCATTERED (25 TO 50%)	
	BKN	BROKEN (51 TO 75%)	
	SLD	SOLID (GREATER THAN 75%)	
CLOUDS TOP TEMPERATURE	CTT	CLOUD TOP TEMPERATURE	
CONVECTION	WK CONVTN	WEAK CONVECTION (CTT GREATER THAN -25°C)	
	MOD CONVTN	MODERATE CONVECTION (CTT BETWEEN -25°C TO -40°C)	
	INT CONVTN	INTENSE CONVECTION (CTT BETWEEN -41°C TO -70°C)	
	V INT CONVTN	VERY INTENSE CONVECTION (CTT LESS THAN -70°C)	
METEOROLOGICAL SUB-DIVISIONS, STATES & UNION TERRITORIES	ARUPR	ARUNACHAL PRADESH	
	BHR	BIHAR	
	CHTGH	CHHATTISGARH	
	COTL AP	COASTAL ANDHRA PRADESH	
	COTL KRNTK	COASTAL KARNATAKA	
	COTL ORS	COASTAL ORISSA	
	GUJ	GUJARAT	
	GWB	GANGETIC WEST BENGAL	
	HARY	HARYANA	
	DLH	DELHI	
	HP	HIMACHAL PRADESH	
	J&K	JAMMU AND KASHMIR	
	JHRKND	JHARKHAND	
	KER	KERALA	
	KKN	KONKAN	
	LKSDP	LAKSHADWEEP	
	M MAHA	MADHYA MAHARASHTRA	
	MAHA	MAHARASHTRA	
	MANI	MANIPUR	
	MEGHA	MEGHALAYA	
	MIZO	MIZORAM	
	MP	MADHYA PRADESH	
		MRTHWD	MARATHWADA
		NAGA	NAGALAND
N COTL AP		NORTH COASTAL ANDHRA PRADESH	
NIK		NORTH INTERIOR KARNATAKA	
ORS		ORISSA	
PJB		PUNJAB	

	RAJ	RAJASTHAN
	RYLSM	RAYALASEEMA
	SAU & KUTCH	SAURASHTRA & KUTCH
	SHWB	SUB-HIMALAYAN WEST BENGAL
	SIK	SOUTH INTERIOR KARNATAKA
	SKM	SIKKIM
	TLNGN	TELANGANA
	TN	TAMIL NADU
	TRP	TRIPURA
	UP	UTTAR PRADESH
	UTRKND	UTTARAKHAND
	VID	VIDHARBHA
	SHWB	SUB HIMALAYAN WEST BENGAL
	GWB	GANGETIC WEST BENGAL
	ARSEA	ARABIAN SEA
	ILS	ISLANDS
MISCELLANEOUS	ASSW	IN ASSOCIATION WITH
	ASSTD	ASSOCIATED
	LLC	LOW LEVEL CIRCULATION
	EMBDD	EMBEDDED
	N/HOOD	NEIGHBOURHOOD
	EXT	EXTREME