

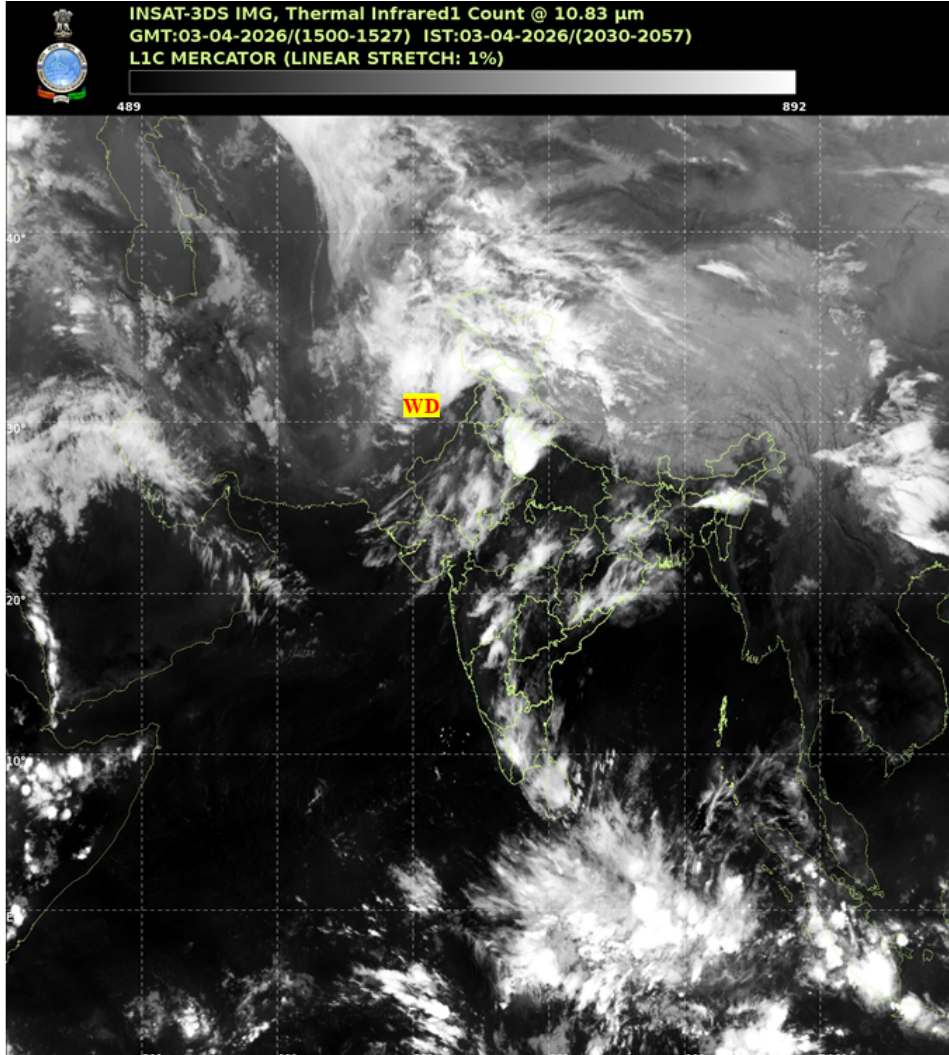


भारत मौसम विज्ञान विभाग  
पृथ्वी विज्ञान मंत्रालय  
India Meteorological Department  
Ministry of Earth Sciences



**SATELLITE BULLETIN BASED ON SATELLITE IMAGERIES AND PRODUCTS**

Date: 2026-04-03 Time: 15:00:00 UTC



TCIN50 DEMS 031500

SATELLITE BULLETIN BASED ON INSAT-3DS PIC OF 031500 UTC (.)

REGION COVERED BETWEEN LAT 50.0°N TO 35.0°S AND LONG 40.0°E TO 125.0°E (.)

**SALIENT FEATURES:**

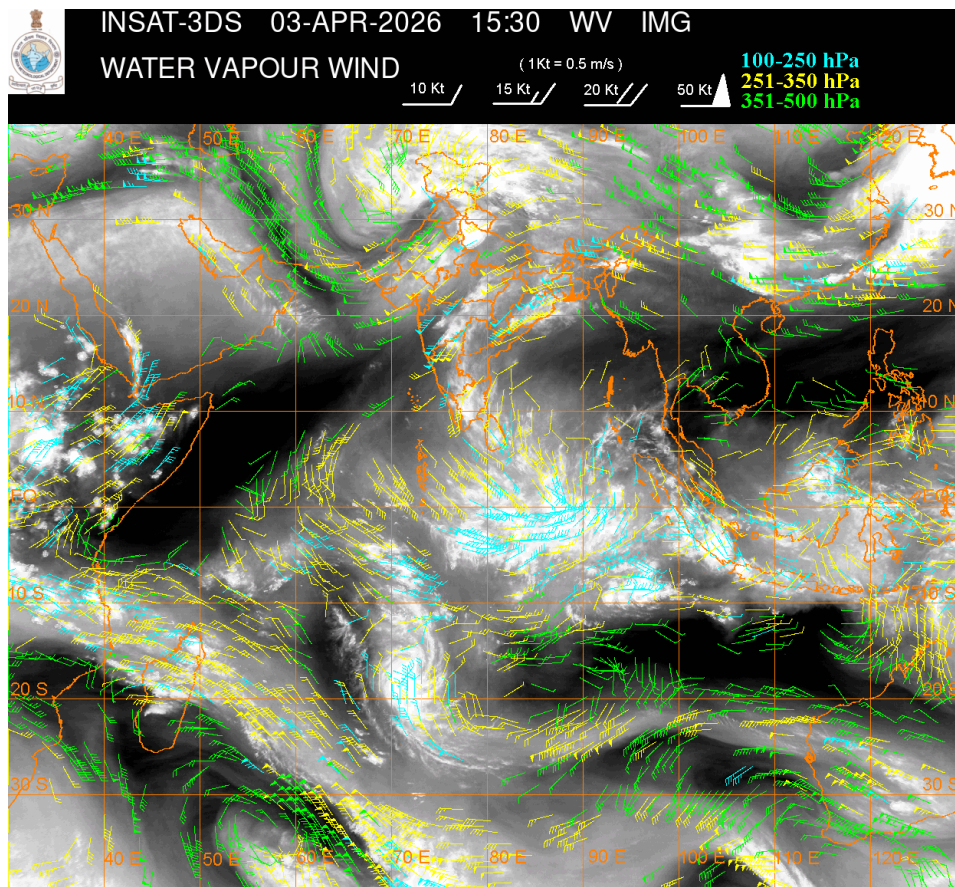
**WESTERN DISTURBANCE (WD):-**

SCT TO BKN MULTILAYERED CLOUDS OVER AFGAN PAK LADAKH J&K HP UTRKND PJB HARY DLH UP RAJ GUJ AND N/HOOD IN ASSW WD OVER THE AREA (.)

**CONVECTIVE / THUNDERSTORM ACTIVITY:-**

INTENSE TO VERY INTENSE CONVECTIVE / THUNDERSTORM ACTIVITY OBSERVED OVER LADAKH J&K HP UTRKND E HARY NW UP MEGHA ASSAM (MINIMUM CTT MINUS 60-80 DEGREE CEL) (.)

**MODERATE TO INTENSE CONVECTIVE / THUNDERSTORM ACTIVITY OBSERVED OVER PJB W HARY DLH RAJ GUJ MP MAHA CHTGH ORS JHRKND BHR GWB KRNTK KER TN (MINIMUM CTT MINUS 40-60 DEGREE CEL) (.)**



**CLOUD DESCRIPTION WITHIN INDIA:**

**NORTH:**

**SCT TO BKN LOW/MED CLOUDS WITH EMBDD INT TO V INT CONVTN OVER LADAKH J&K HP UTRKND E HARY NW UP (.) SCT LOW/MED CLOUDS WITH EMBDD MOD TO INT CONVTN OVER PJB W HARY DLH (.)SCT LOW/MED CLOUDS OVER E UP (.)**

**EAST:**

**SCT TO BKN LOW/MED CLOUDS WITH EMBDD INT TO V INT CONVTN OVER MEGHA ASSAM NAGA (.) SCT LOW/MED CLOUDS WITH EMBDD MOD TO INT CONVTN OVER BHR JHRKND CHTGH ORS GWB (.) SCT LOW/MED CLOUDS WITH EMBDD ISOL WK TO MOD CONVTN OVER SHWB REST NE STATES (.)**

**WEST:**

**SCT TO BKN LOW/MED CLOUDS WITH EMBDD MOD TO INT CONVTN OVER RAJ GUJ MP MADHYA MAHA MRTHWD VID (.) SCT LOW/MED CLOUDS OVER W GUJ W RAJ MP KKN GOA (.)**

**SOUTH:**

**SCT TO BKN LOW/MED CLOUDS WITH EMBDD INT TO V INT CONVTN OVER KRNTK KER (.) SCT LOW/MED CLOUDS WITH EMBDD ISOL WK TO MOD CONVTN OVER TLNGN RYLSM REST TN (.) ISOL TO SCT LOW/MED CLOUDS OVER S COTL AP REST KER LKSDP ILS AREA ANDAMAN ILS AREA (.)**

**ARABIAN SEA:**

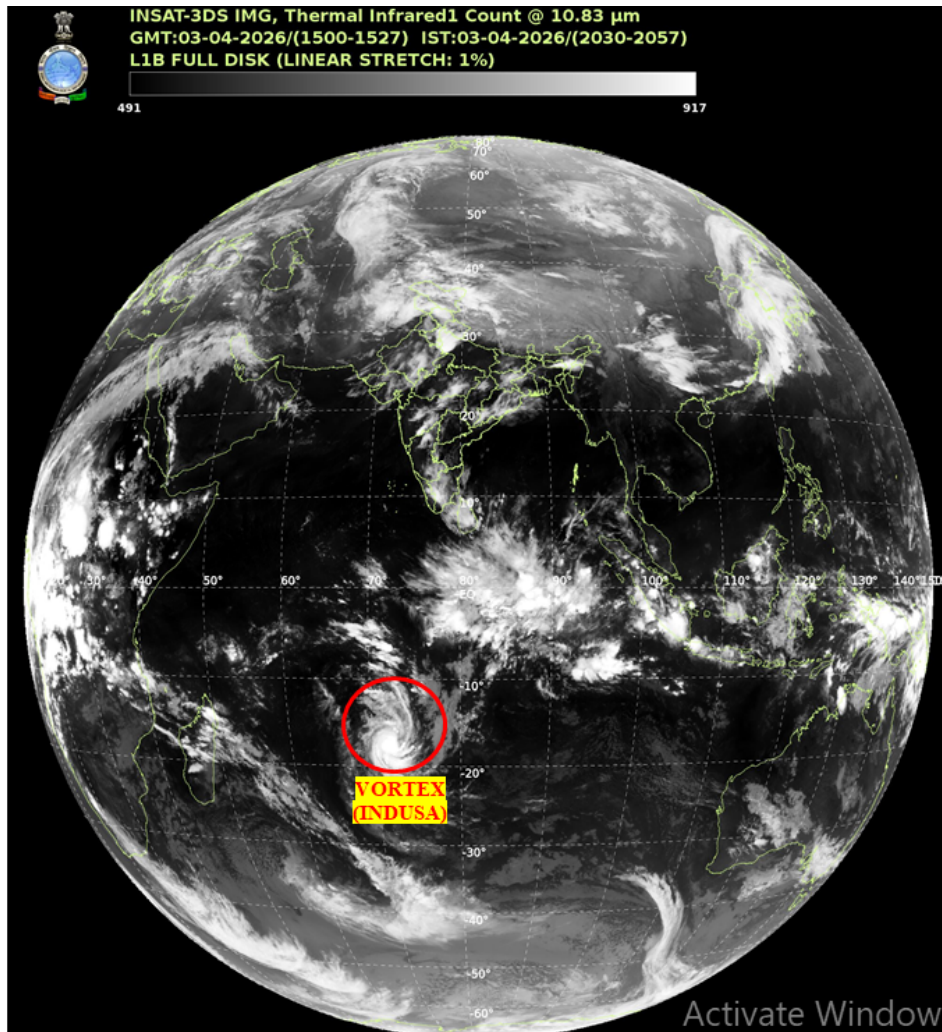
**SCT LOW/MED CLOUDS WITH EMBDD ISOL WK TO MOD CONVTN OVER NORTH AND CENTRAL**

ARSEA GULLF OF KUTCH (.)

**BAY OF BENGAL & ANDAMAN SEA:**

SCT TO BKN LOW/MED CLOUDS WITH EMBDD MOD TO INT CONVTN OVER NW BAY SOUTH BAY ADJ EQUATORIAL INDIAN OCEAN & SOUTH ANDAMAN SEA (.)

**CLOUD DESCRIPTION OUTSIDE INDIA:**



**VORTEX (INDUSA) OVER SOUTH INDIAN OCEAN :-**

VORTEX (INDUSA) OVER SOUTH INDIAN OCEAN (AREA E80 ) CENTERED NEAR 17.2S / 71.9E (.) INTENSITY T3.5/3.5 (.) MAXIMUM SUSTAINED WINDS 48-63 KTS (.) ASSTD SCT TO BKN LOW/MED CLOUDS WITH EMBDD INT TO V INT CONVTN OVER AREA BET LAT 10.0S TO 20.0S LONG 67.0E TO 75.0E (.)

SCT LOW/MED CLOUDS WITH EMBDD MOD TO INT CONVTN OVER SRI LANKA PALK STR GULF OF MANNAR PAK NEPAL BHUTAN TIBET CHINA YELLOW SEA ADJ EAST CHINA SEA TAIWAN MYANMAR SUMATRA STR OF MALACCA MALAYSIA BORNEO SOUTH CHINA SEA JAVA ILS & SEA CELEBES & SEA ILS PHILIPPINES NORTH MADAGASCAR NORTH MOZAMBIQUE CHANNEL AND OVER INDIAN OCEAN BET LAT 5.0N TO 20.0S LONG 50.0E TO 100.0E AND BET LAT 20.0S TO LAT 35.0S LONG 50.0E TO 80.0E (.)

T00 03/2140 HRS IST

NNNN

## LEGEND

REGION	
NORTH	J&K HP UTRKND PJB HARY DLH UP
EAST	BHR JHRKND CHTGH ORS WB SKM NORTH-EAST STATES
WEST	RAJ MP GUJ MAHA GOA
SOUTH	TLNGN AP KRNTK KER TN LKSDP ANDAMAN & NICOBAR ILS
CLOUD DISTRIBUTION	
ISOL	ISOLATED (LESS THAN 25%)
SCT	SCATTERED (25 TO 50%)
BKN	BROKEN (51 TO 75%)
SLD	SOLID (GREATER THAN 75%)
CLOUDS TOP TEMPERATURE	
CTT	CLOUD TOP TEMPERATURE
CONVECTION	
WK CONVTN	WEAK CONVECTION (CTT GREATER THAN -25°C)
MOD CONVTN	MODERATE CONVECTION (CTT BETWEEN -25°C TO -40°C)
INT CONVTN	INTENSE CONVECTION (CTT BETWEEN -41°C TO -70°C)
V INT CONVTN	VERY INTENSE CONVECTION (CTT LESS THAN -70°C)
METEOROLOGICAL SUB-DIVISIONS, STATES & UNION TERRITORIES	
J&K	JAMMU AND KASHMIR
HP	HIMACHAL PRADESH
UTRKND	UTTARAKHAND
PJB	PUNJAB
HARY	HARYANA
DLH	DELHI
BHR	BIHAR
JHRKND	JHARKHAND
CHTGH	CHHATTISGARH
ORS	ORISSA
GWB	GANGETIC WEST BENGAL
SHWB	SUB-HIMALAYAN WEST BENGAL
SKM	SIKKIM
ARUPR	ARUNACHAL PRADESH
ASSAM	ASSAM

<b>MEGHA</b>	<b>MEGHALAYA</b>
<b>MANI</b>	<b>MANIPUR</b>
<b>MIZO</b>	<b>MIZORAM</b>
<b>TRP</b>	<b>TRIPURA</b>
<b>RAJ</b>	<b>RAJASTHAN</b>
<b>MP</b>	<b>MADHYA PRADESH</b>
<b>GUJ</b>	<b>GUJARAT</b>
<b>SAU &amp; KUTCH</b>	<b>SAURASHTRA &amp; KUTCH</b>
<b>MAHA</b>	<b>MAHARASHTRA</b>
<b>M MAHA</b>	<b>MADHYA MAHARASHTRA</b>
<b>MRTHWD</b>	<b>MARATHWADA</b>
<b>VID</b>	<b>VIDARBHA</b>
<b>KKN</b>	<b>KONKAN</b>
<b>TLNGN</b>	<b>TELANGANA</b>
<b>RYLSM</b>	<b>RAYALSEEMA</b>
<b>COTL AP</b>	<b>COASTAL ANDHRA PRADESH</b>
<b>NIK</b>	<b>NORTH INTERIOR KARNATAKA</b>
<b>SIK</b>	<b>SOUTH INTERIOR KARNATAKA</b>
<b>COTL KRNTK</b>	<b>COASTAL KARNATAKA</b>
<b>KER</b>	<b>KERALA</b>
<b>TN</b>	<b>TAMILNADU</b>
<b>LKSDP</b>	<b>LAKSHADWEEP</b>
<b>ILS</b>	<b>ISLANDS</b>
<b>ARSEA</b>	<b>ARABIAN SEA</b>
<b>MISCELLANEOUS</b>	
<b>ASSW</b>	<b>IN ASSOCIATION WITH</b>
<b>ASSTD</b>	<b>ASSOCIATED</b>
<b>LLC</b>	<b>LOW LEVEL CIRCULATION</b>
<b>EMBDD</b>	<b>EMBEDDED</b>
<b>N/HOOD</b>	<b>NEIGHBOURHOOD</b>
<b>EXT</b>	<b>EXTREME</b>