



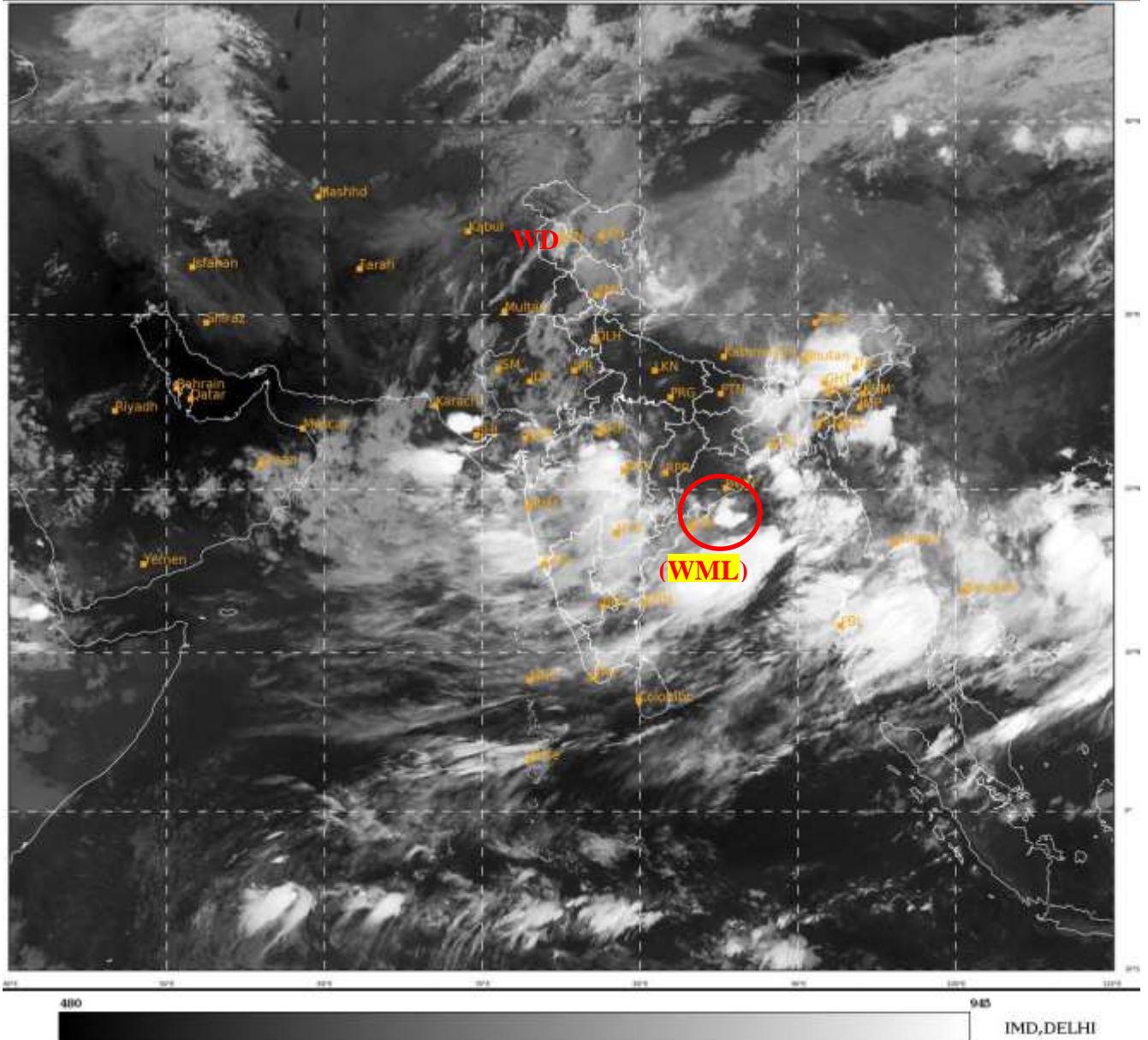
भारत मौसम विज्ञान विभाग
पृथ्वी विज्ञान मंत्रालय
India Meteorological Department
Ministry of Earth Sciences



**SATELLITE BULLETIN BASED ON SATELLITE
IMAGERIES AND PRODUCTS**
08.08.2022 TIME 0000 UTC

SAT : INSAT-3DR IMG
IMG_TIR1 10.8 um
LIC Mercator

08-08-2022/(0015 to 0042) GMT
08-08-2022/(0545 to 0612) IST



TCIN50 DEMS 080000

SATELLITE BULLETIN BASED ON INSAT-3DR PIC OF 080015 UTC (.)

REGION COVERED BETWEEN LAT 50.0°N TO 30.0°S AND LONG 40.0°E TO 125.0°E (.)

SALIENT FEATURES:-

VORTEX (WML) OVER S ORISSA ADJ N AP COASTS & N/HOOD:-

VORTEX (WML) OVER S ORS ADJ N AP COASTS & N/HOOD (.) ASSD SCT LOW/MED CLOUDS WITH EMBDD INT TO V INT CONV TN OVER S COTL ORS ADJ N COTL AP & N/HOOD (.) MINIMUM CTT MINUS 93 DEG C (.)

WESTERN DISTURBANCE (WD):-

SCT MULTI-LAYERED CLOUDS OVER N PAK LADAKH J&K HP TIBET ADJ CHINA IN ASSW WD OVER THE AREA (.)

INTENSE CONVECTIVE CLOUDS :-

INTENSE CONVECTIVE CLOUDS OBSERVED OVER NW GUJ S MP MAHA TLNGN GWB SHWB ARUPR ASSAM MEGHA & ANDAMAN ILS (.)



INSAT-3DR 08-AUG-2022 00:15 WV IMG

WATER VAPOUR WIND

(1Kt = 0.5 m/s)

10 Kt

15 Kt

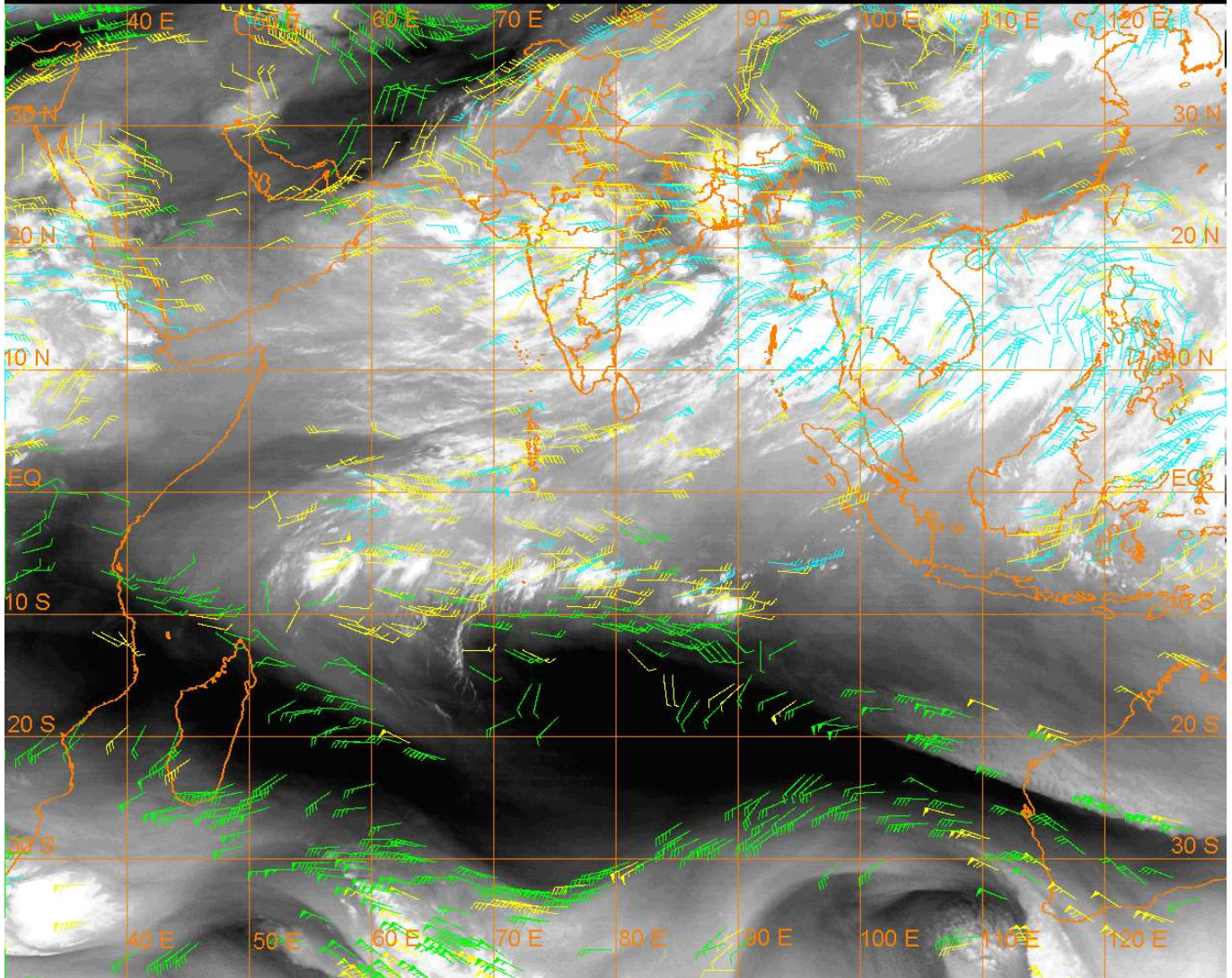
20 Kt

50 Kt

100-250 hPa

251-350 hPa

351-500 hPa



CLOUDS DESCRIPTION WITHIN INDIA:-

NORTH:-

SCT LOW/MED CLOUDS WITH EMBDD MOD TO INT CONVTN OVER W LADAKH J&K AND WK TO MOD CONVTN OVER E LADAKH HP UTRKND S PJB N HARY SW UP (.) SCT LOW/MED CLOUDS OVER N PJB S HARY DLH REST UP (.)

EAST:-

SCT TO BKN LOW/MED CLOUDS WITH EMBDD INT TO V INT CONVTN OVER W ARUPR ASSAM MEGHA NW BD BHUTAN (MINIMUM CTT MINUS 93 DEG C) (.) SCT LOW/MED CLOUDS WITH EMBDD MOD TO INT CONVTN OVER S CHTGH NE JHRKND E BHR ORS GWB SHWB SKM MANI MIZO REST BD AND ISOL WK TO MOD CONVTN OVER N CHTGH REST NE STATES (.) SCT LOW/MED CLOUDS OVER W BHR REST JHRKND (.)

WEST:-

SCT TO BKN LOW/MED CLOUDS WITH EMBDD INT TO V INT CONVTN OVER NW GUJ S MP VID (MINIMUM CTT MINUS 93 DEG C) (.) SCT TO BKN LOW/MED CLOUDS WITH EMBDD MOD TO INT CONVTN OVER REST GUJ N MP REST MAHA GOA AND WK TO MOD CONVTN OVER RAJ (.)

SOUTH:-

SCT TO BKN LOW/MED CLOUDS WITH EMBDD INT TO V INT CONVTN OVER TLNGN ANDAMAN ILS (MINIMUM CTT MINUS 86 DEG C) (.) SCT LOW/MED CLOUDS WITH EMBDD MOD TO INT CONVTN OVER RYLSM COTL AP KRNTK KER TN NICOBAR ILS AND WK TO MOD CONVTN OVER LKSDP ILS (.)

ARABIAN SEA:-

SCT LOW/MED CLOUDS WITH EMBDD INT TO V INT CONVTN OVER NE & EC ARSEA (.) SCT LOW/MED CLOUDS WITH EMBDD WK TO MOD CONVTN OVER REST ARSEA (.)

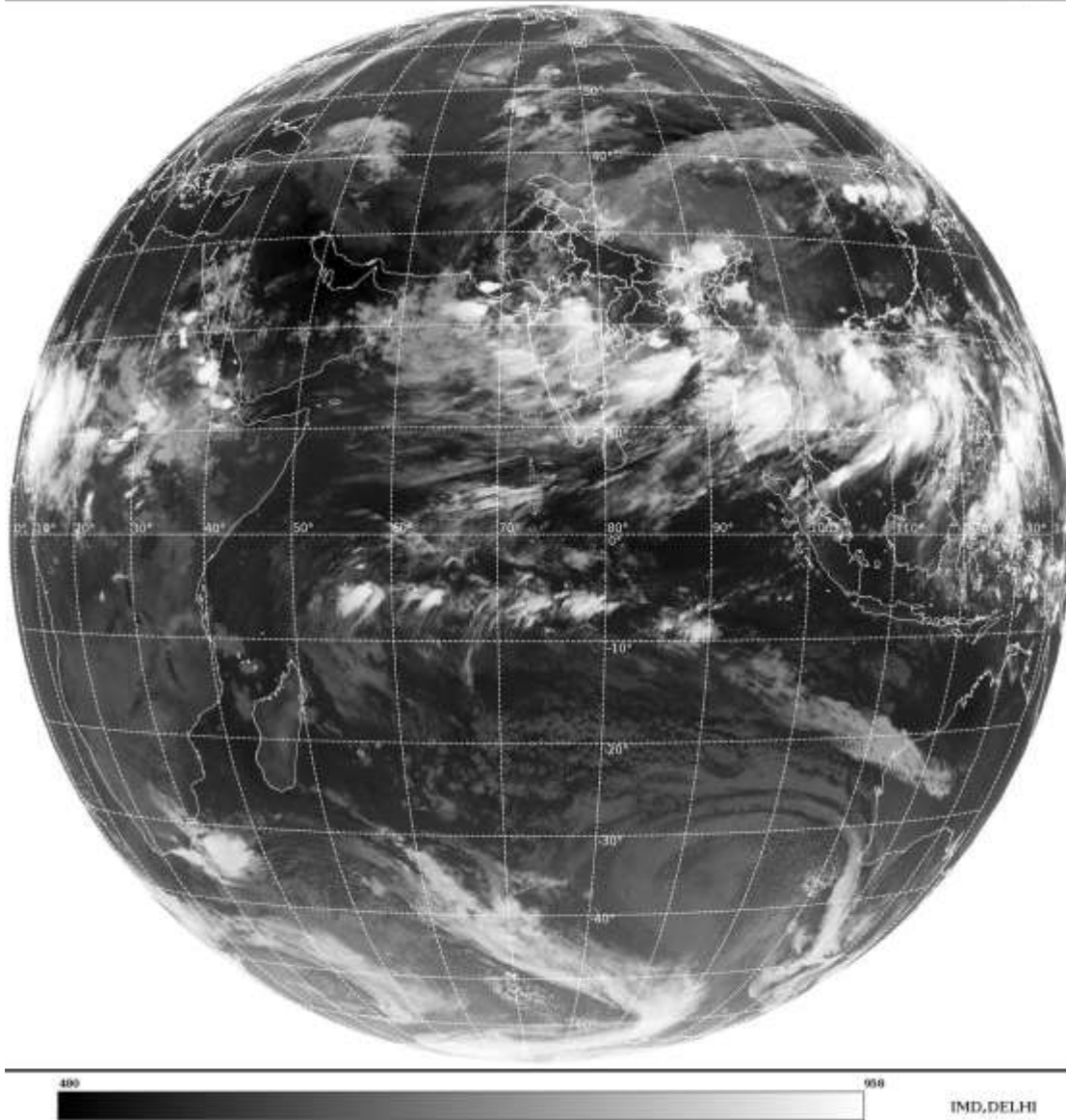
BAY OF BENGAL & ANDAMAN SEA:-

SCT TO BKN LOW/MED CLOUDS WITH EMBDD INT TO V INT CONVTN OVER NORTH & C BAY N ANDAMAN SEA (.) SCT LOW/MED CLOUDS WITH EMBDD MOD TO INT CONVTN OVER REST BAY & S ANDAMAN SEA (.)

CLOUDS DESCRIPTION OUTSIDE INDIA:-

SAT : INSAT-3DR IMG
Thermal Infrared1 Count 10.8 um
LIB FULL DISK

08-08-2022/(0015 to 0042) GMT
08-08-2022/(0545 to 0612) IST



SCT LOW/MED CLOUDS WITH EMBDD MOD TO INT CONVTN OVER MALDIVES BHUTAN TIBET CHINA MYANMAR THAILAND GULF OF THAILAND CAMBODIA LAOS VIETNAM GULF OF TONKIN HAINAN N SUMATRA STR OF MALACCA MALAYSIA BORNEO SOUTH CHINA SEA CELEBES ILS & SEA PHILIPPINES SULU SEA YELLOW SEA AND OVER INDIAN OCEAN BET LAT 5.0N TO 10.0S LONG 55.0E TO 90.0E (.)

TOO 08/0650 HRS IST=

NNNN

LEGEND:-

REGION	NORTH	J&K HP PJB HARY DLH UP UTRKND
	EAST	BHR JHRKND CHTGH OR WB SKM NORTH- EAST STATES
	WEST	RAJ MP GUJ MAHA GOA
	SOUTH	TLNGN AP KRNTK KER TN LKSDP ANDAMAN & NICOBAR ILS

CLOUD DISTRIBUTION	ISOL	ISOLATED (LESS THAN 25%)	
	SCT	SCATTERED (25 TO 50%)	
	BKN	BROKEN (51 TO 75%)	
	SLD	SOLID (GREATER THAN 75%)	
CLOUDS TOP TEMPERATURE	CTT	CLOUD TOP TEMPERATURE	
CONVECTION	WK CONVTN	WEAK CONVECTION (CTT GREATER THAN -25°C)	
	MOD CONVTN	MODERATE CONVECTION (CTT BETWEEN -25°C TO -40°C)	
	INT CONVTN	INTENSE CONVECTION (CTT BETWEEN -41°C TO -70°C)	
	V INT CONVTN	VERY INTENSE CONVECTION (CTT LESS THAN -70°C)	
METEOROLOGICAL SUB-DIVISIONS, STATES & UNION TERRITORIES	ARUPR	ARUNACHAL PRADESH	
	BHR	BIHAR	
	CHTGH	CHHATTISGARH	
	COTL AP	COASTAL ANDHRA PRADESH	
	COTL KRNTK	COASTAL KARNATAKA	
	COTL ORS	COASTAL ORISSA	
	GUJ	GUJARAT	
	GWB	GANGETIC WEST BENGAL	
	HARY	HARYANA	
	DLH	DELHI	
	HP	HIMACHAL PRADESH	
	J&K	JAMMU AND KASHMIR	
	JHRKND	JHARKHAND	
	KER	KERALA	
	KKN	KONKAN	
	LKSDP	LAKSHADWEEP	
	M MAHA	MADHYA MAHARASHTRA	
	MAHA	MAHARASHTRA	
	MANI	MANIPUR	
	MEGHA	MEGHALAYA	
	MIZO	MIZORAM	
	MP	MADHYA PRADESH	
		MRTHWD	MARATHWADA
		NAGA	NAGALAND
N COTL AP		NORTH COASTAL ANDHRA PRADESH	
NIK		NORTH INTERIOR KARNATAKA	
ORS		ORISSA	
PJB		PUNJAB	
RAJ		RAJASTHAN	
RYLSM		RAYALASEEMA	
SAU & KUTCH		SAURASHTRA & KUTCH	
SHWB		SUB-HIMALAYAN WEST BENGAL	
SIK		SOUTH INTERIOR KARNATAKA	
SKM		SIKKIM	

	TLNGN	TELANGANA
	TN	TAMIL NADU
	TRP	TRIPURA
	UP	UTTAR PRADESH
	UTRKND	UTTARAKHAND
	VID	VIDHARBHA
	SHWB	SUB HIMALAYAN WEST BENGAL
	GWB	GANGETIC WEST BENGAL
	ARSEA	ARABIAN SEA
	ILS	ISLANDS
MISCELLANEOUS	ASSW	IN ASSOCIATION WITH
	ASSTD	ASSOCIATED
	LLC	LOW LEVEL CIRCULATION
	EMBDD	EMBEDDED
	N/HOOD	NEIGHBOURHOOD
	EXT	EXTREME