



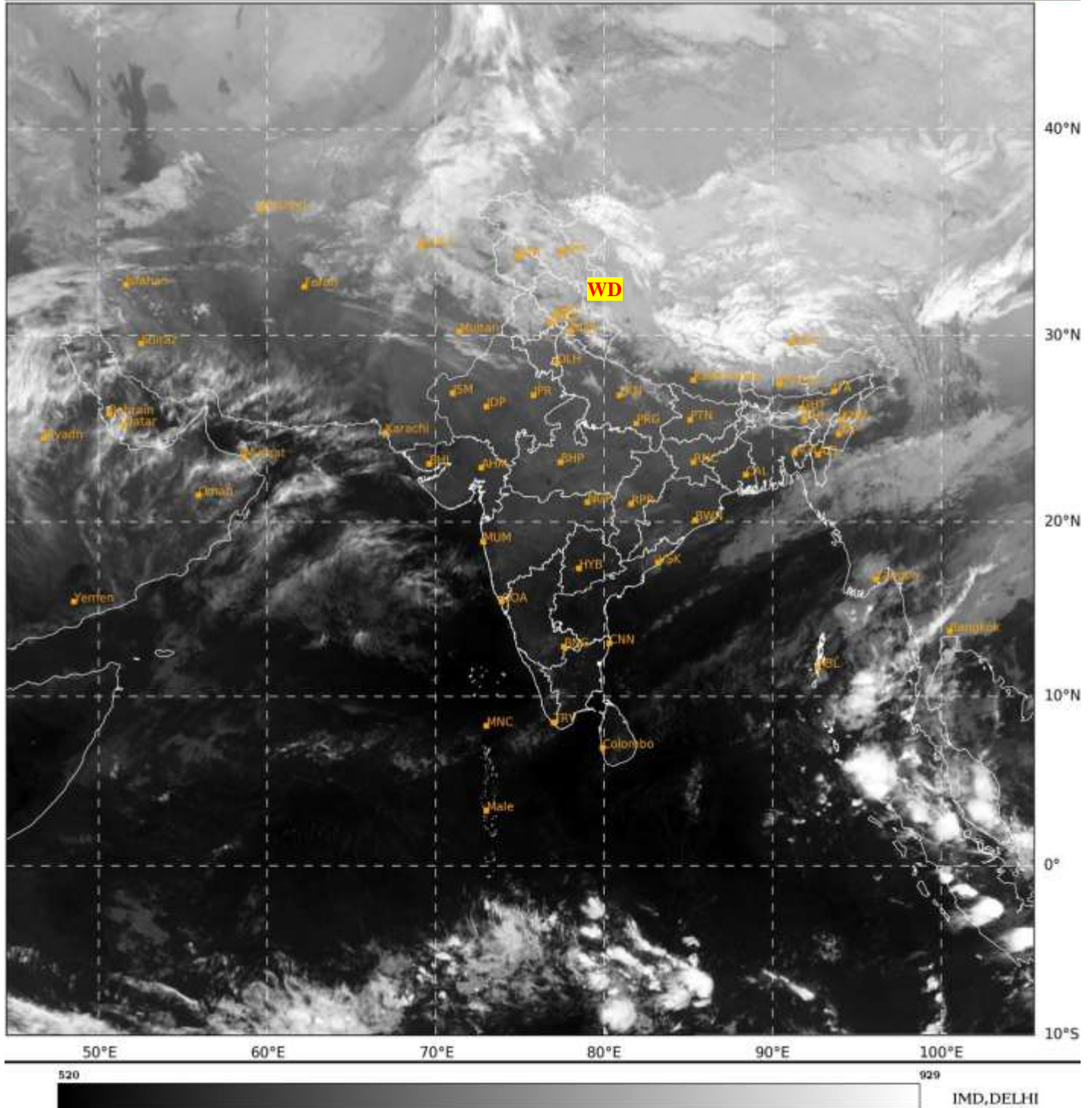
भारत मौसम विज्ञान विभाग  
पृथ्वी विज्ञान मंत्रालय  
India Meteorological Department  
Ministry of Earth Sciences



**SATELLITE BULLETIN BASED ON SATELLITE  
IMAGERIES AND PRODUCTS**  
**25.01.2024 TIME 1500 UTC**

SAT : INSAT-3D IMG  
IMG\_TIR1 10.8 um  
LIC Mercator

25-01-2024/(1500 to 1526) GMT  
25-01-2024/(2030 to 2056) IST



TCIN50 DEMS 251500

SATELLITE BULLETIN BASED ON INSAT- 3D PIC OF 251500 UTC (.)

REGION COVERED BETWEEN LAT 50.0°N TO 35.0°S AND LONG 40.0°E TO 125.0°E (.)

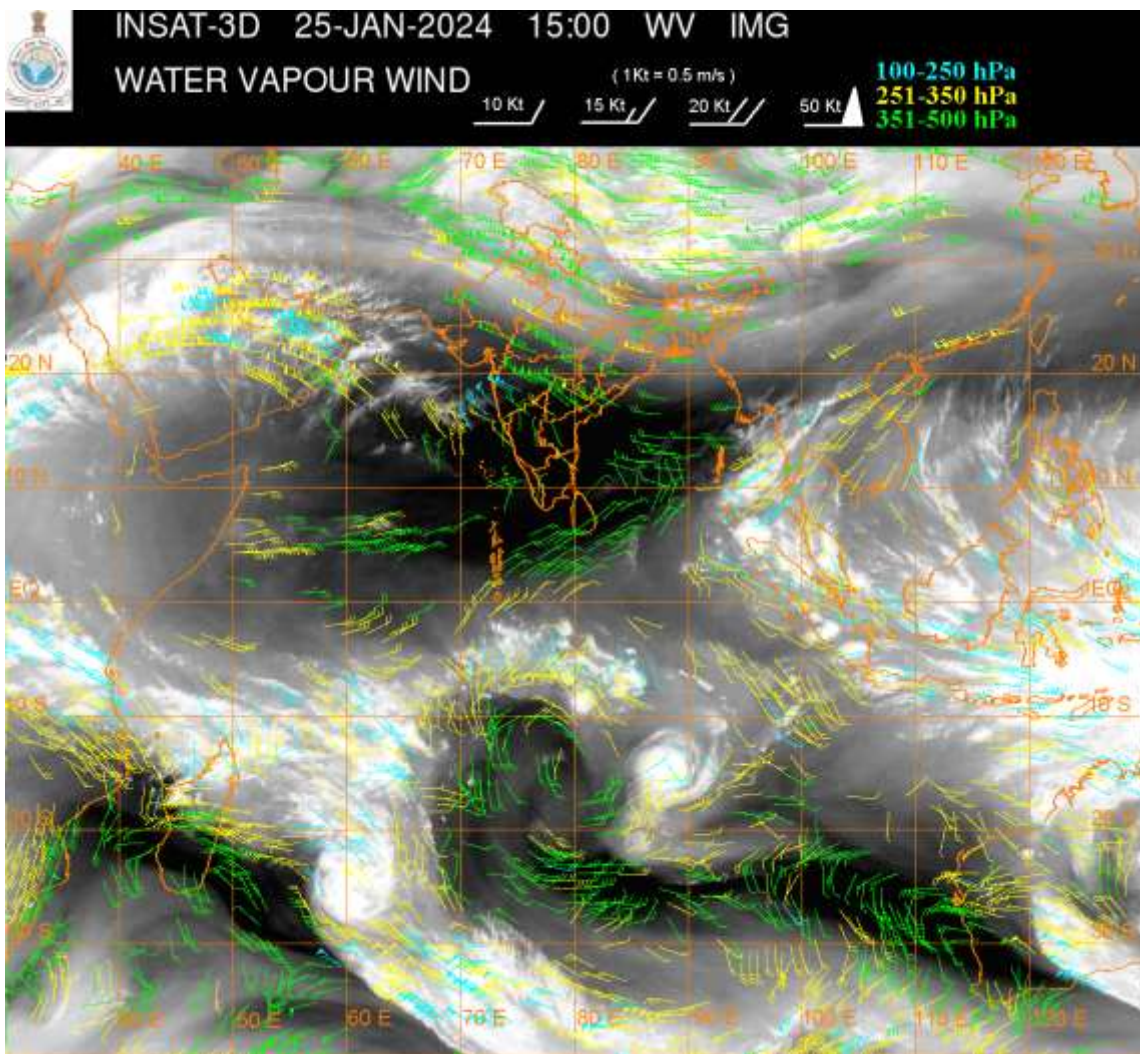
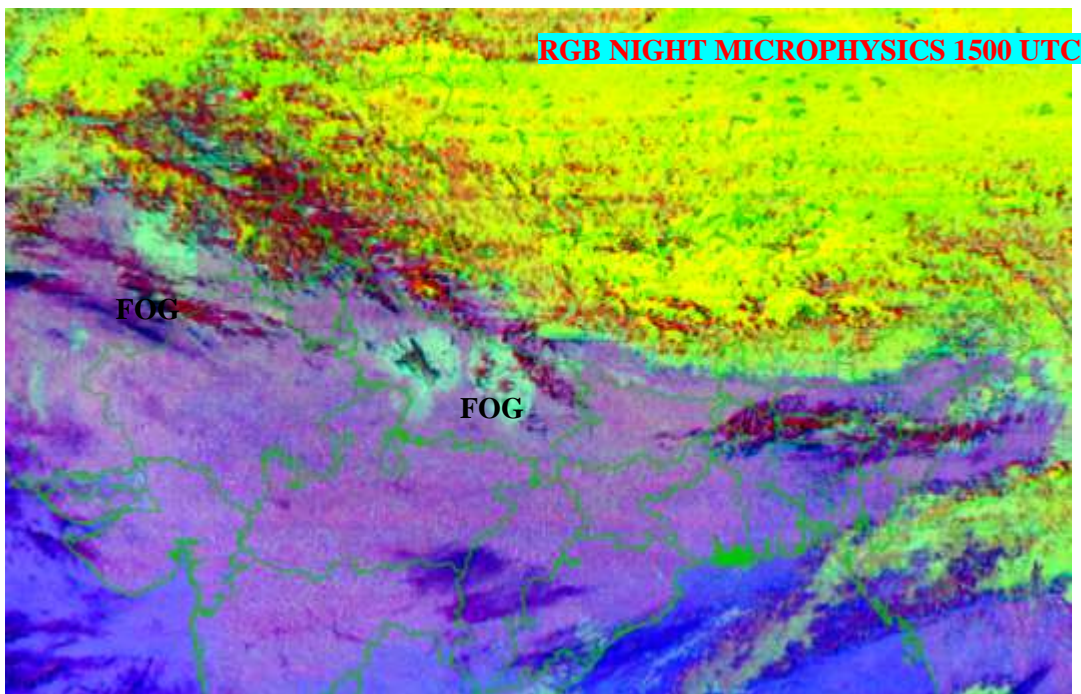
**SALIENT FEATURES:-**

**WESTERN DISTURBANCE:-**

SCT MULTILAYERED CLOUDS OVER AFGAN N PAK LADAKH J&K HP UTRKND PJB HARY NW  
RAJ N UP TIBET ADJ CHINA IN ASSW **WD** OVER THE AREA (.)

**FOG / LOW CLOUDS:-**

NIGHT MICROPHYSICS IMAGERY OF INSAT-3D (RAPID) AT 1500 UTC SHOWS SCT FOG / LOW  
CLOUDS OVER EC PAK C UP (.)



**CLOUDS DESCRIPTION WITHIN INDIA:-**

**NORTH:-**

SCT LOW/MED CLOUDS WITH EMBDD ISOL WK TO MOD CONVTN OVER LADAKH J&K HP UTRKND PJB N HARY N UP (.) SCT LOW/MED CLOUDS OVER S HARY S UP (.)

**EAST:-**

SCT LOW/MED CLOUDS WITH EMBDD ISOL WK TO MOD CONVTN OVER SHWB SKM NE STATES (.) SCT LOW/MED CLOUDS OVER S CHTGH ORS BHR (.)

**WEST:-**

SCT LOW/MED CLOUDS WITH EMBDD ISOL WK TO MOD CONVTN OVER NW RAJ (.) SCT LOW/MED CLOUDS OVER SE MP E VID KKN (.)

**SOUTH:-**

SCT LOW/MED CLOUDS WITH EMBDD ISOL WK TO MOD CONVTN OVER ANDAMAN & NICOBAR ILS (.) SCT LOW/MED CLOUDS OVER TLNGN RYLSMA COTL AP KRNTK KER TN (.)

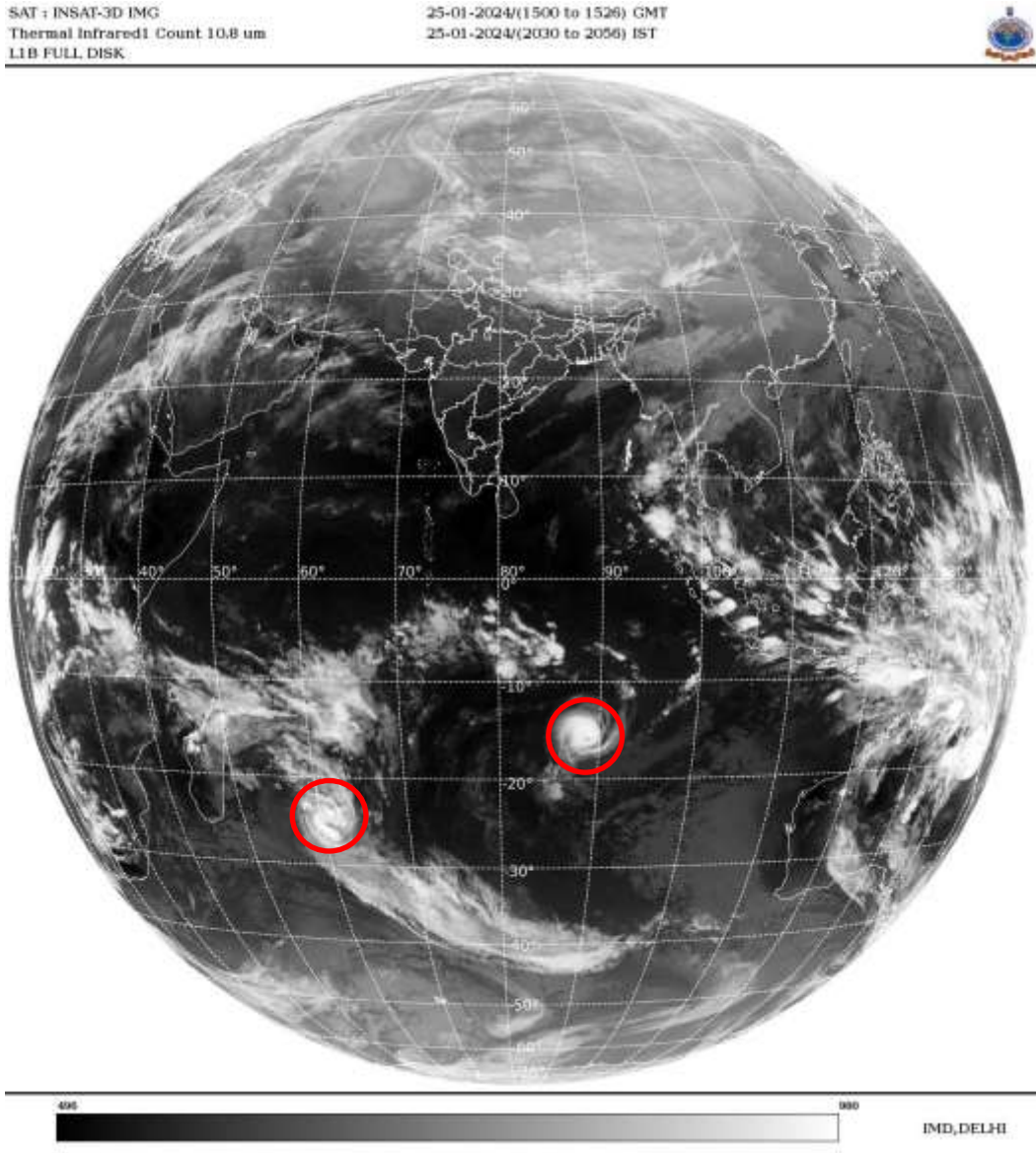
ARABIAN SEA:-

SCT LOW/MED CLOUDS WITH EMBDD ISOL WK TO MOD CONVTN OVER ARSEA (.)

BAY OF BENGAL & ANDAMAN SEA:-

SCT TO BKN LOW/MED CLOUDS WITH EMBDD MOD TO INT CONVTN OVER ANDAMAN SEA (.)  
SCT LOW/MED CLOUDS WITH EMBDD ISOL WK CONVTN OVER NORTH BAY (.) SCT  
LOW/MED CLOUDS OVER REST BAY (.)

CLOUDS DESCRIPTION OUTSIDE INDIA:-



VORTEX (ANGGREK) OVER SOUTH INDIAN OCEAN:-

VORTEX (**ANGGREK**) OVER SOUTH INDIAN OCEAN (**AREA E85**) CENTERED NEAR **15.7S / 89.0E** (.) INTENSITY **T4.5/4.5** (.) MAXIMUM SUSTAINED WINDS OF **64-89 KTS** (.) ASSTD SCT TO BKN LOW/MED CLOUDS WITH EMBDD INT TO V INT CONVTN OVER AREA BET LAT 13.0S TO 17.0S LONG 87.0E TO 92.0E (.)

ANOTHER VORTEX (CANDICE) OVER SOUTH INDIAN OCEAN:-

VORTEX (**CANDICE**) OVER SOUTH INDIAN OCEAN (**AREA D60 ADJ D70**) CENTERED NEAR **24.0S / 60.5E** (.) INTENSITY **T3.0/3.0** (.) MAXIMUM SUSTAINED WINDS OF **34-47 KTS** (.) ASSTD SCT TO BKN LOW/MED CLOUDS WITH EMBDD INT TO V INT CONVTN OVER AREA BET LAT 20.0S TO 27.5S LONG 57.0E TO 64.0E (.)

SCT LOW/MED CLOUDS WITH EMBDD MOD TO INT CONVTN OVER N PAK TIBET CHINA MYANMAR THAILAND GULF OF THAILAND LAOS SUMATRA STR OF MALACCA MALAYSIA BORNEO SOUTH CHINA SEA JAVA ILS & SEA CELEBES ILS & SEA PHILIPPINES NORTH MADAGASCAR NORTH MOZAMBIQUE CHANNEL AND OVER INDIAN OCEAN BET EQ TO LAT 20.0S LONG 40.0E TO 100.0E AND BET LAT 20.0S TO 35.0S LONG 56.0E TO 80.0E (.)

TOO 25/2120 HRS IST=

NNNN

**LEGEND:-**

|  |                      |  |                   |
|--|----------------------|--|-------------------|
| <b>REGION</b>  | <b>NORTH</b>         | <b>J&amp;K HP PJB HARY DLH UP UTRKND</b>                     |                   |
|  | <b>EAST</b>          | <b>BHR JHRKND CHTGH ORS WB SKM NORTH- EAST STATES</b>        |                   |
|  | <b>WEST</b>          | <b>RAJ MP GUJ MAHA GOA</b>                                   |                   |
|  | <b>SOUTH</b>         | <b>TLNGN AP KRNTK KER TN LKSDP ANDAMAN &amp; NICOBAR ILS</b> |                   |
| <b>CLOUD DISTRIBUTION</b>  | <b>ISOL</b>          | <b>ISOLATED (LESS THAN 25%)</b>                              |                   |
|  | <b>SCT</b>           | <b>SCATTERED (25 TO 50%)</b>                                 |                   |
|  | <b>BKN</b>           | <b>BROKEN (51 TO 75%)</b>                                    |                   |
|  | <b>SLD</b>           | <b>SOLID (GREATER THAN 75%)</b>                              |                   |
| <b>CLOUDS TOP TEMPERATURE</b>  | <b>CTT</b>           | <b>CLOUD TOP TEMPERATURE</b>                                 |                   |
| <b>CONVECTION</b>  | <b>WK CONV TN</b>    | <b>WEAK CONVECTION (CTT GREATER THAN -25°C)</b>              |                   |
|  | <b>MOD CONV TN</b>   | <b>MODERATE CONVECTION (CTT BETWEEN -25°C TO -40°C)</b>      |                   |
|  | <b>INT CONV TN</b>   | <b>INTENSE CONVECTION (CTT BETWEEN -41°C TO -70°C)</b>       |                   |
|  | <b>V INT CONV TN</b> | <b>VERY INTENSE CONVECTION (CTT LESS THAN -70°C)</b>         |                   |
| <b>METEOROLOGICAL SUB- DIVISIONS, STATES &amp; UNION TERRITORIES</b> | <b>ARUPR</b>         | <b>ARUNACHAL PRADESH</b>                                     |                   |
|  | <b>BHR</b>           | <b>BIHAR</b>   |                   |
|  | <b>CHTGH</b>         | <b>CHHATTISGARH</b>  |                   |
|  | <b>COTL AP</b>       | <b>COASTAL ANDHRA PRADESH</b>                                |                   |
|  | <b>COTL KRNTK</b>    | <b>COASTAL KARNATAKA</b>                                     |                   |
|  | <b>COTL ORS</b>      | <b>COASTAL ORISSA</b>  |                   |
|  | <b>GUJ</b>           | <b>GUJARAT</b>   |                   |
|  | <b>GWB</b>           | <b>GANGETIC WEST BENGAL</b>                                  |                   |
|  | <b>HARY</b>          | <b>HARYANA</b>   |                   |
|  | <b>DLH</b>           | <b>DELHI</b>   |                   |
|  | <b>HP</b>            | <b>HIMACHAL PRADESH</b>                                      |                   |
|  | <b>J&amp;K</b>       | <b>JAMMU AND KASHMIR</b>                                     |                   |
|  | <b>JHRKND</b>        | <b>JHARKHAND</b>   |                   |
|  | <b>KER</b>           | <b>KERALA</b>  |                   |
|  | <b>KKN</b>           | <b>KONKAN</b>  |                   |
|  | <b>LKSDP</b>         | <b>LAKSHADWEEP</b>   |                   |
|  | <b>M MAHA</b>        | <b>MADHYA MAHARASHTRA</b>                                    |                   |
|  | <b>MAHA</b>          | <b>MAHARASHTRA</b>   |                   |
|  | <b>MANI</b>          | <b>MANIPUR</b>   |                   |
|  | <b>MEGHA</b>         | <b>MEGHALAYA</b>   |                   |
|  | <b>MIZO</b>          | <b>MIZORAM</b>   |                   |
|  | <b>MP</b>            | <b>MADHYA PRADESH</b>  |                   |
|  |                      | <b>MRTHWD</b>  | <b>MARATHWADA</b> |
|  |                      | <b>NAGA</b>  | <b>NAGALAND</b>   |
| <b>N COTL AP</b>   |                      | <b>NORTH COASTAL ANDHRA PRADESH</b>                          |                   |
| <b>NIK</b>   |                      | <b>NORTH INTERIOR KARNATAKA</b>                              |                   |

|                      |                        |                                  |
|----------------------|------------------------|----------------------------------|
|                      | <b>ORS</b>             | <b>ORISSA</b>                    |
|                      | <b>PJB</b>             | <b>PUNJAB</b>                    |
|                      | <b>RAJ</b>             | <b>RAJASTHAN</b>                 |
|                      | <b>RYLSM</b>           | <b>RAYALASEEMA</b>               |
|                      | <b>SAU &amp; KUTCH</b> | <b>SAURASHTRA &amp; KUTCH</b>    |
|                      | <b>SHWB</b>            | <b>SUB-HIMALAYAN WEST BENGAL</b> |
|                      | <b>SIK</b>             | <b>SOUTH INTERIOR KARNATAKA</b>  |
|                      | <b>SKM</b>             | <b>SIKKIM</b>                    |
|                      | <b>TLNGN</b>           | <b>TELANGANA</b>                 |
|                      | <b>TN</b>              | <b>TAMIL NADU</b>                |
|                      | <b>TRP</b>             | <b>TRIPURA</b>                   |
|                      | <b>UP</b>              | <b>UTTAR PRADESH</b>             |
|                      | <b>UTRKND</b>          | <b>UTTARAKHAND</b>               |
|                      | <b>VID</b>             | <b>VIDHARBHA</b>                 |
|                      | <b>SHWB</b>            | <b>SUB HIMALAYAN WEST BENGAL</b> |
|                      | <b>GWB</b>             | <b>GANGETIC WEST BENGAL</b>      |
|                      | <b>ARSEA</b>           | <b>ARABIAN SEA</b>               |
|                      | <b>ILS</b>             | <b>ISLANDS</b>                   |
| <b>MISCELLANEOUS</b> | <b>ASSW</b>            | <b>IN ASSOCIATION WITH</b>       |
|                      | <b>ASSTD</b>           | <b>ASSOCIATED</b>                |
|                      | <b>LLC</b>             | <b>LOW LEVEL CIRCULATION</b>     |
|                      | <b>EMBDD</b>           | <b>EMBEDDED</b>                  |
|                      | <b>N/HOOD</b>          | <b>NEIGHBOURHOOD</b>             |
|                      | <b>EXT</b>             | <b>EXTREME</b>                   |