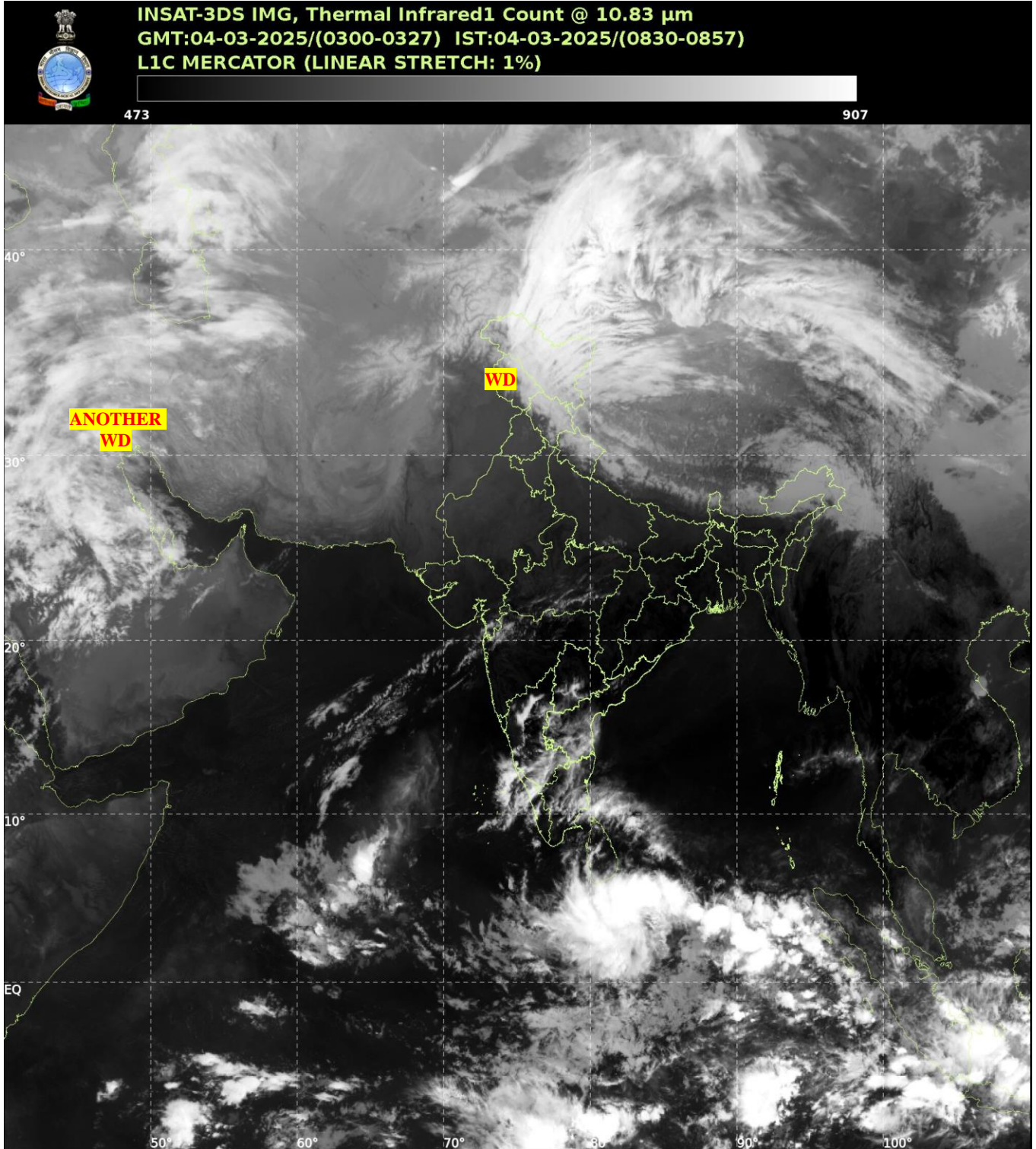




भारत मौसम विज्ञान विभाग  
पृथ्वी विज्ञान मंत्रालय  
India Meteorological Department  
Ministry of Earth Sciences



**SATELLITE BULLETIN BASED ON SATELLITE  
IMAGERIES AND PRODUCTS**  
**04.03.2025 TIME 0300 UTC**



TCIN50 DEMS 040300

SATELLITE BULLETIN BASED ON INSAT-3DS PIC OF 040300 UTC (.)

REGION COVERED BETWEEN LAT 50.0°N TO 35.0°S AND LONG 40.0°E TO 125.0°E (.)

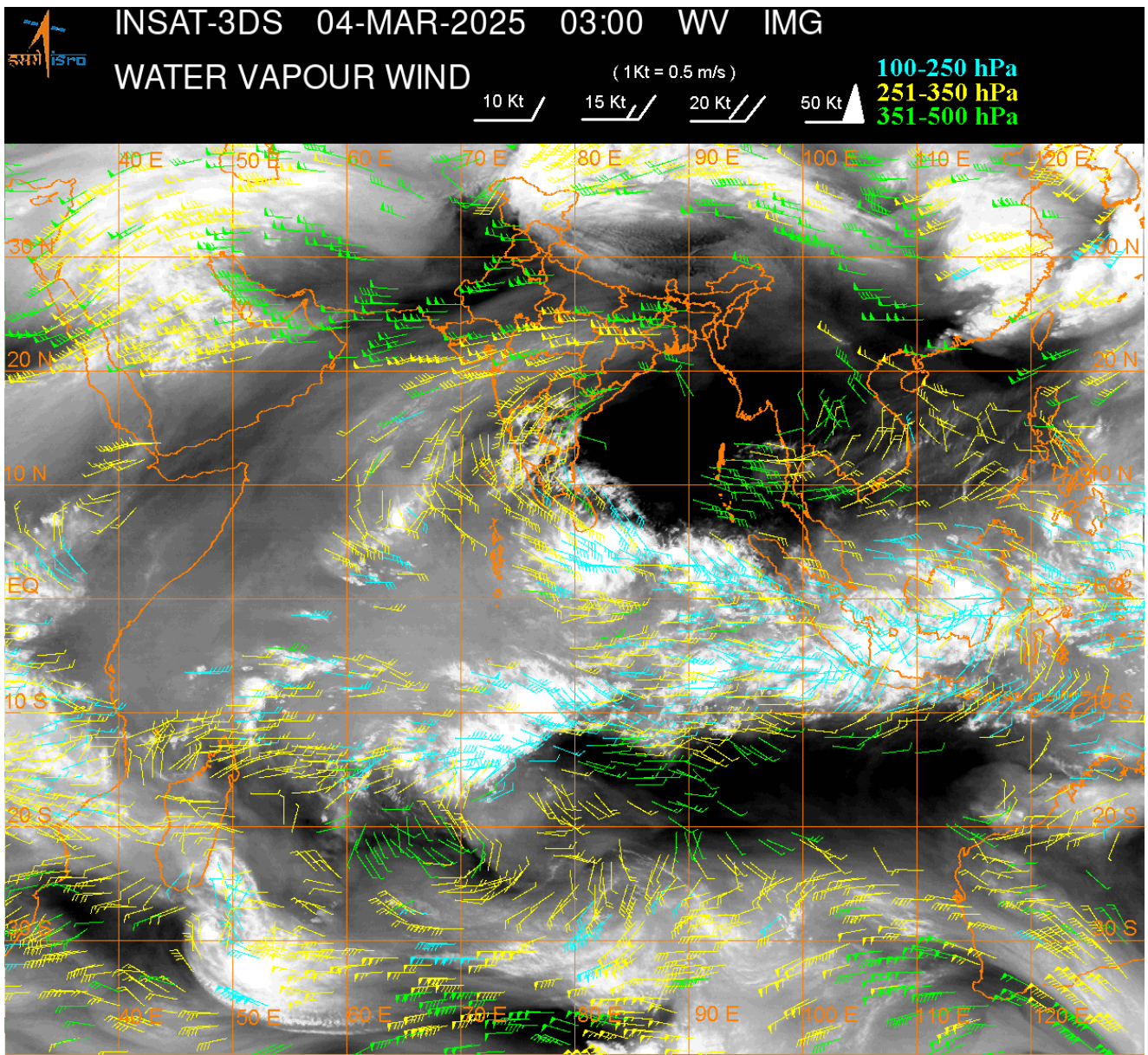
**SALIENT FEATURES:-**

**WESTERN DISTURBANCE:-**

SCT MULTILAYERED CLOUDS OVER J&K LADAKH HP UTRKND WEST NEPAL TIBET ADJ CHINA IN ASSW **WD** OVER THE AREA (.)

SCT MULTILAYERED CLOUDS OVER IRAQ IRAN AND N/HOOD IN ASSW **ANOTHER WD** OVER THE AREA (.)





**CLOUDS DESCRIPTION WITHIN INDIA:-**

**NORTH:-**

SCT LOW/MED CLOUDS WITH EMBDD MOD TO INT CONVTN OVER LADAKH AND WK TO MOD CONVTN OVER J&K HP UTRKND (.) ISOL TO SCT LOW/MED CLOUDS OVER PJB N HARY UP (.)

**EAST:-**

SCT LOW/MED CLOUDS WITH EMBDD WK CONVTN OVER SKM ARUPR E ASSAM (.) ISOL TO SCT LOW/MED CLOUDS OVER N CHTGH N SHWB NAGA (.)

**WEST:-**

SCT LOW/MED CLOUDS WITH EMBDD ISOL WK TO MOD CONVTN OVER S MP SE GUJ N KKN NORTH MADHYA MAHA W VID (.)

**SOUTH:-**

SCT LOW/MED CLOUDS WITH EMBDD MOD TO INT CONVTN OVER KRNTK SW TLNGN N & KER TN LKSDP ILS AREA (.) SCT LOW/MED CLOUDS WITH EMBDD ISOL WK TO MOD CONVTN OVER RYLSM COTL AP (.) SCT LOW/MED CLOUDS OVER NICOBAR ILS (.)

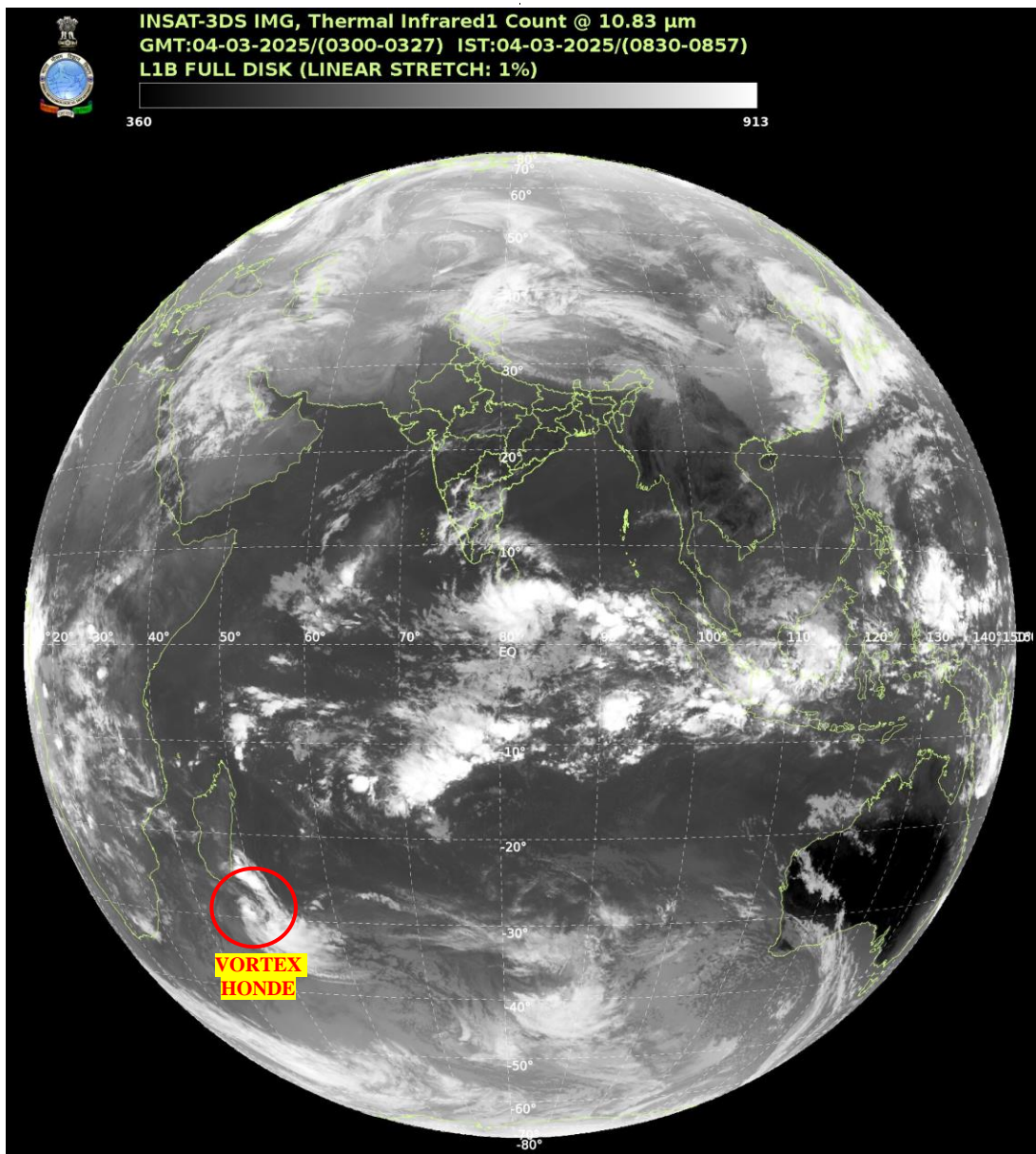
**ARABIAN SEA:-**

SCT LOW/MED CLOUDS WITH EMBDD MOD TO INT CONVTN OVER SOUTH ARSEA & LKSDP ILS AREA (.) SCT LOW/MED CLOUDS WITH EMBDD ISOL WK TO MOD CONVTN OVER CENTRAL ARSEA MALDIVES & COMORIN AREA (.)

**BAY OF BENGAL & ANDAMAN SEA:-**

SCT LOW/MED CLOUDS WITH EMBDD INT TO V INT CONVTN OVER EXT SOUTH BAY ADJ EQUATORIAL INDIAN OCEAN AND ISOL MOD TO INT CONVTN OVER SW BAY (.) SCT LOW/MED CLOUDS OVER ANDAMAN SEA (.)

**CLOUDS DESCRIPTION OUTSIDE INDIA:-**



**VORTEX (HONDE) OVER SOUTH INDIAN OCEAN:-**

VORTEX (HONDE) OVER SOUTH INDIAN OCEAN (AREA D65 ADJ D80) CENTERED NEAR 28.5S / 48.2E (.) INTENSITY T2.5/3.0 (.) MAXIMUM SUSTAINED WINDS 34-47 KTS (.) ASSTD SCT TO BKN LOW/MED CLOUDS WITH EMBDD INT TO V INT CONVTN OVER AREA BET LAT 22.0S TO 35.0S LONG 46.0E TO 58.0E (.)

SCT LOW/MED CLOUDS WITH EMBDD MOD TO INT CONVTN OVER SRI LANKA PALK STR GULF OF MANNAR MALDIVES TIBET CHINA YELLOW SEA EAST CHINA SEA TAIWAN LAOS SUMATRA STR OF MALACCA MALAYSIA BORNEO SOUTH CHINA SEA JAVA ILS & SEA CELEBES ILS & SEA PHILIPPINES SULU SEA SOUTH MADAGASCAR MOZAMBIQUE CHANNEL AND OVER INDIAN OCEAN BET LAT 5.0N TO 35.0S LONG 40.0E TO 110.0E (.)

TOO 04/0930 EF=

NNNN

**LEGEND:-**

|        |       |   |
|--------|-------|---|
| REGION | NORTH | J&K HP PJB HARY DLH UP UTRKND                     |
|        | EAST  | BHR JHRKND CHTGH ORS WB SKM NORTH- EAST STATES    |
|        | WEST  | RAJ MP GUJ MAHA GOA                               |
|        | SOUTH | TLNGN AP KRNTK KER TN LKSDP ANDAMAN & NICOBAR ILS |

|  |                     |   |                   |
|--|---------------------|---|-------------------|
| <b>CLOUD DISTRIBUTION</b>  | <b>ISOL</b>         | <b>ISOLATED (LESS THAN 25%)</b>                         |                   |
|  | <b>SCT</b>          | <b>SCATTERED (25 TO 50%)</b>                            |                   |
|  | <b>BKN</b>          | <b>BROKEN (51 TO 75%)</b>                               |                   |
|  | <b>SLD</b>          | <b>SOLID (GREATER THAN 75%)</b>                         |                   |
| <b>CLOUDS TOP TEMPERATURE</b>  | <b>CTT</b>          | <b>CLOUD TOP TEMPERATURE</b>                            |                   |
| <b>CONVECTION</b>  | <b>WK CONVTN</b>    | <b>WEAK CONVECTION (CTT GREATER THAN -25°C)</b>         |                   |
|  | <b>MOD CONVTN</b>   | <b>MODERATE CONVECTION (CTT BETWEEN -25°C TO -40°C)</b> |                   |
|  | <b>INT CONVTN</b>   | <b>INTENSE CONVECTION (CTT BETWEEN -41°C TO -70°C)</b>  |                   |
|  | <b>V INT CONVTN</b> | <b>VERY INTENSE CONVECTION (CTT LESS THAN -70°C)</b>    |                   |
| <b>METEOROLOGICAL SUB- DIVISIONS, STATES &amp; UNION TERRITORIES</b> | <b>ARUPR</b>        | <b>ARUNACHAL PRADESH</b>                                |                   |
|  | <b>BHR</b>          | <b>BIHAR</b>  |                   |
|  | <b>CHTGH</b>        | <b>CHHATTISGARH</b>                                     |                   |
|  | <b>COTL AP</b>      | <b>COASTAL ANDHRA PRADESH</b>                           |                   |
|  | <b>COTL KRNTK</b>   | <b>COASTAL KARNATAKA</b>                                |                   |
|  | <b>COTL ORS</b>     | <b>COASTAL ORISSA</b>                                   |                   |
|  | <b>GUJ</b>          | <b>GUJARAT</b>  |                   |
|  | <b>GWB</b>          | <b>GANGETIC WEST BENGAL</b>                             |                   |
|  | <b>HARY</b>         | <b>HARYANA</b>  |                   |
|  | <b>DLH</b>          | <b>DELHI</b>  |                   |
|  | <b>HP</b>           | <b>HIMACHAL PRADESH</b>                                 |                   |
|  | <b>J&amp;K</b>      | <b>JAMMU AND KASHMIR</b>                                |                   |
|  | <b>JHRKND</b>       | <b>JHARKHAND</b>  |                   |
|  | <b>KER</b>          | <b>KERALA</b>   |                   |
|  | <b>KKN</b>          | <b>KONKAN</b>   |                   |
|  | <b>LKSDP</b>        | <b>LAKSHADWEEP</b>                                      |                   |
|  | <b>M MAHA</b>       | <b>MADHYA MAHARASHTRA</b>                               |                   |
|  | <b>MAHA</b>         | <b>MAHARASHTRA</b>                                      |                   |
|  | <b>MANI</b>         | <b>MANIPUR</b>  |                   |
|  | <b>MEGHA</b>        | <b>MEGHALAYA</b>  |                   |
|  | <b>MIZO</b>         | <b>MIZORAM</b>  |                   |
|  | <b>MP</b>           | <b>MADHYA PRADESH</b>                                   |                   |
|  |                     | <b>MRTHWD</b>   | <b>MARATHWADA</b> |
|  |                     | <b>NAGA</b>   | <b>NAGALAND</b>   |
| <b>N COTL AP</b>   |                     | <b>NORTH COASTAL ANDHRA PRADESH</b>                     |                   |
| <b>NIK</b>   |                     | <b>NORTH INTERIOR KARNATAKA</b>                         |                   |
| <b>ORS</b>   |                     | <b>ORISSA</b>   |                   |
| <b>PJB</b>   |                     | <b>PUNJAB</b>   |                   |
| <b>RAJ</b>   |                     | <b>RAJASTHAN</b>  |                   |
| <b>RYLSM</b>   |                     | <b>RAYALASEEMA</b>                                      |                   |
| <b>SAU &amp; KUTCH</b>   |                     | <b>SAURASHTRA &amp; KUTCH</b>                           |                   |
| <b>SHWB</b>  |                     | <b>SUB-HIMALAYAN WEST BENGAL</b>                        |                   |
| <b>SIK</b>   |                     | <b>SOUTH INTERIOR KARNATAKA</b>                         |                   |
| <b>SKM</b>   |                     | <b>SIKKIM</b>   |                   |

|                      |               |                                  |
|----------------------|---------------|----------------------------------|
|                      | <b>TLNGN</b>  | <b>TELANGANA</b>                 |
|                      | <b>TN</b>     | <b>TAMIL NADU</b>                |
|                      | <b>TRP</b>    | <b>TRIPURA</b>                   |
|                      | <b>UP</b>     | <b>UTTAR PRADESH</b>             |
|                      | <b>UTRKND</b> | <b>UTTARAKHAND</b>               |
|                      | <b>VID</b>    | <b>VIDHARBHA</b>                 |
|                      | <b>SHWB</b>   | <b>SUB HIMALAYAN WEST BENGAL</b> |
|                      | <b>GWB</b>    | <b>GANGETIC WEST BENGAL</b>      |
|                      | <b>ARSEA</b>  | <b>ARABIAN SEA</b>               |
|                      | <b>ILS</b>    | <b>ISLANDS</b>                   |
| <b>MISCELLANEOUS</b> | <b>ASSW</b>   | <b>IN ASSOCIATION WITH</b>       |
|                      | <b>ASSTD</b>  | <b>ASSOCIATED</b>                |
|                      | <b>LLC</b>    | <b>LOW LEVEL CIRCULATION</b>     |
|                      | <b>EMBDD</b>  | <b>EMBEDDED</b>                  |
|                      | <b>N/HOOD</b> | <b>NEIGHBOURHOOD</b>             |
|                      | <b>EXT</b>    | <b>EXTREME</b>                   |