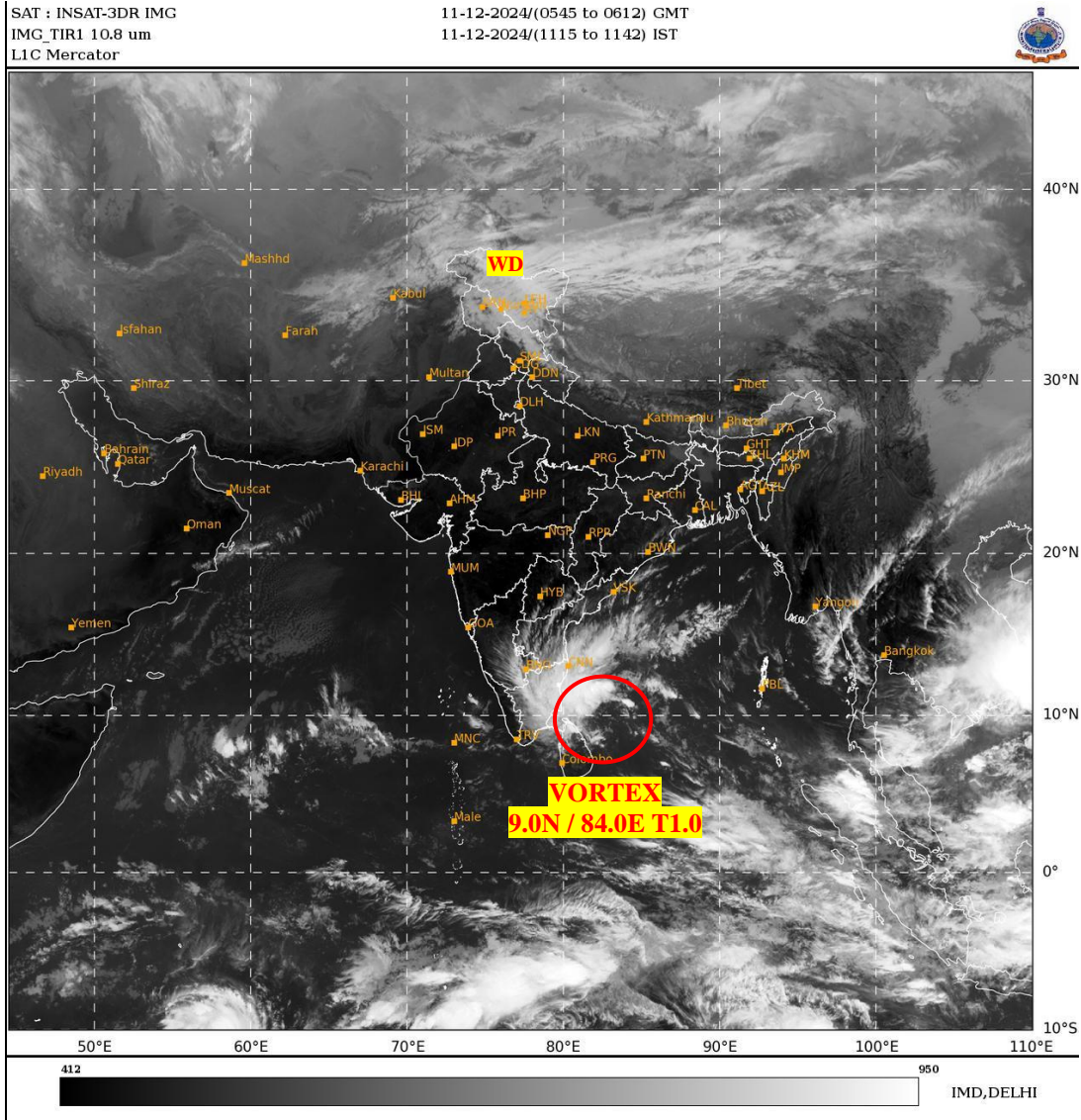




**SATELLITE BULLETIN BASED ON SATELLITE  
IMAGERIES AND PRODUCTS**  
**11.12.2024 TIME 0600 UTC**



TCIN50 DEMS 110600

SATELLITE BULLETIN BASED ON INSAT-3DR PIC OF 110545 UTC (.)

REGION COVERED BETWEEN LAT 50.0°N TO 35.0°S AND LONG 40.0°E TO 125.0°E (.)

**SALIENT FEATURES:-**

**VORTEX OVER SOUTH-WEST BAY:-**

VORTEX OVER SW BAY CENTERED **WITHIN HALF A DEGREE OF 9.0N / 84.0E** (.) INTENSITY **T1.0** (.) ASSTD SCT TO BKN LOW/MED CLOUDS WITH EMBDD INT TO V INT CONVTN OVER SOUTH WEST BAY ADJ WEST CENTRAL BAY BET LAT 8.0N TO 17.0N AND LONG 77.0E TO 85.0E (.) MINIMUM **CTT MINUS 75-85 DEG CEL** (.)

**WESTERN DISTURBANCE:-**

SCT MULTILAYERED CLOUDS OVER AFGAN EXT N PAK J&K LADAKH N HP AND N/HOOD IN ASSW **WD** OVER THE AREA (.)



INSAT-3DR 11-DEC-2024 05:45 WV IMG

WATER VAPOUR WIND

(1Kt = 0.5 m/s)

10 Kt

15 Kt

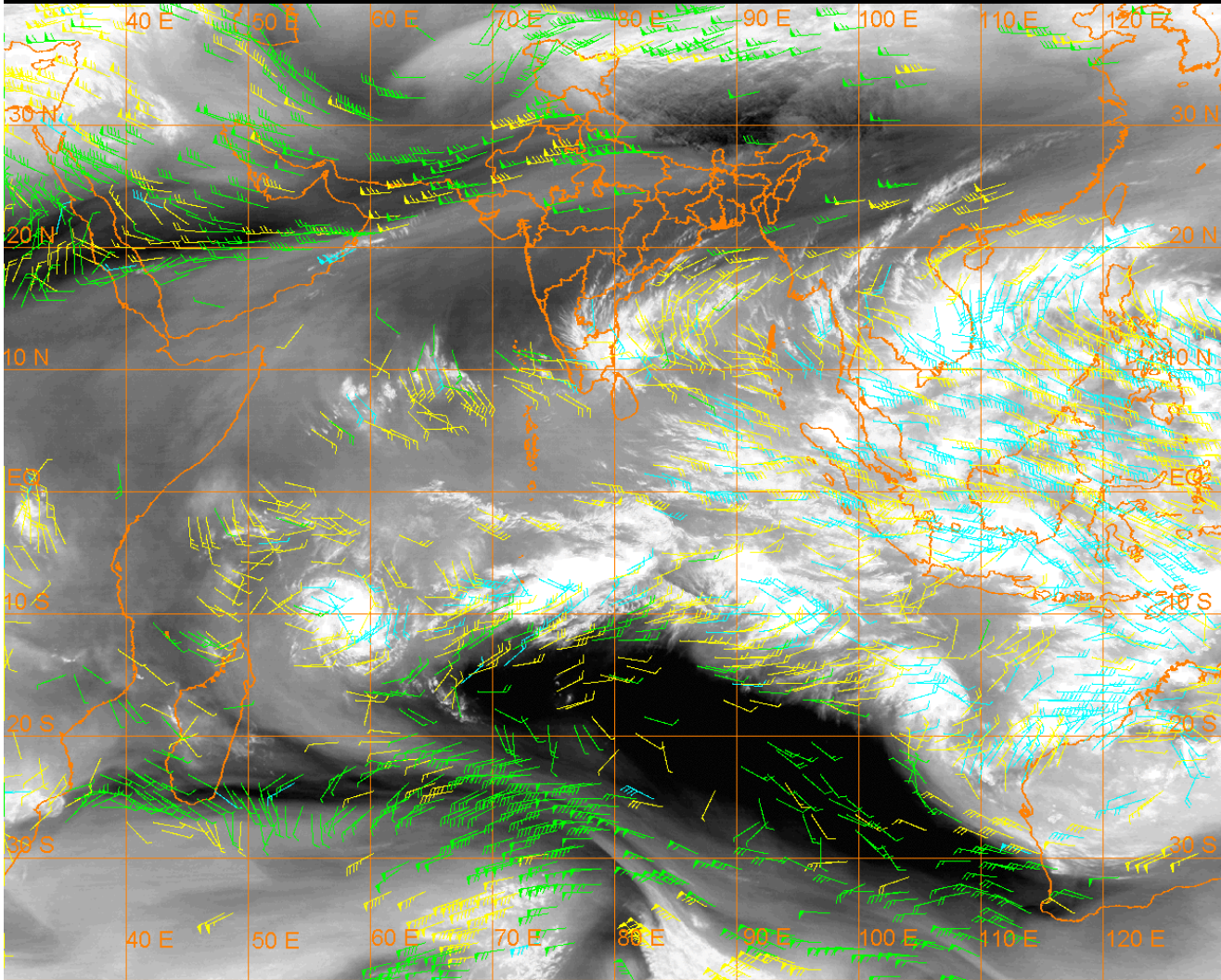
20 Kt

50 Kt

100-250 hPa

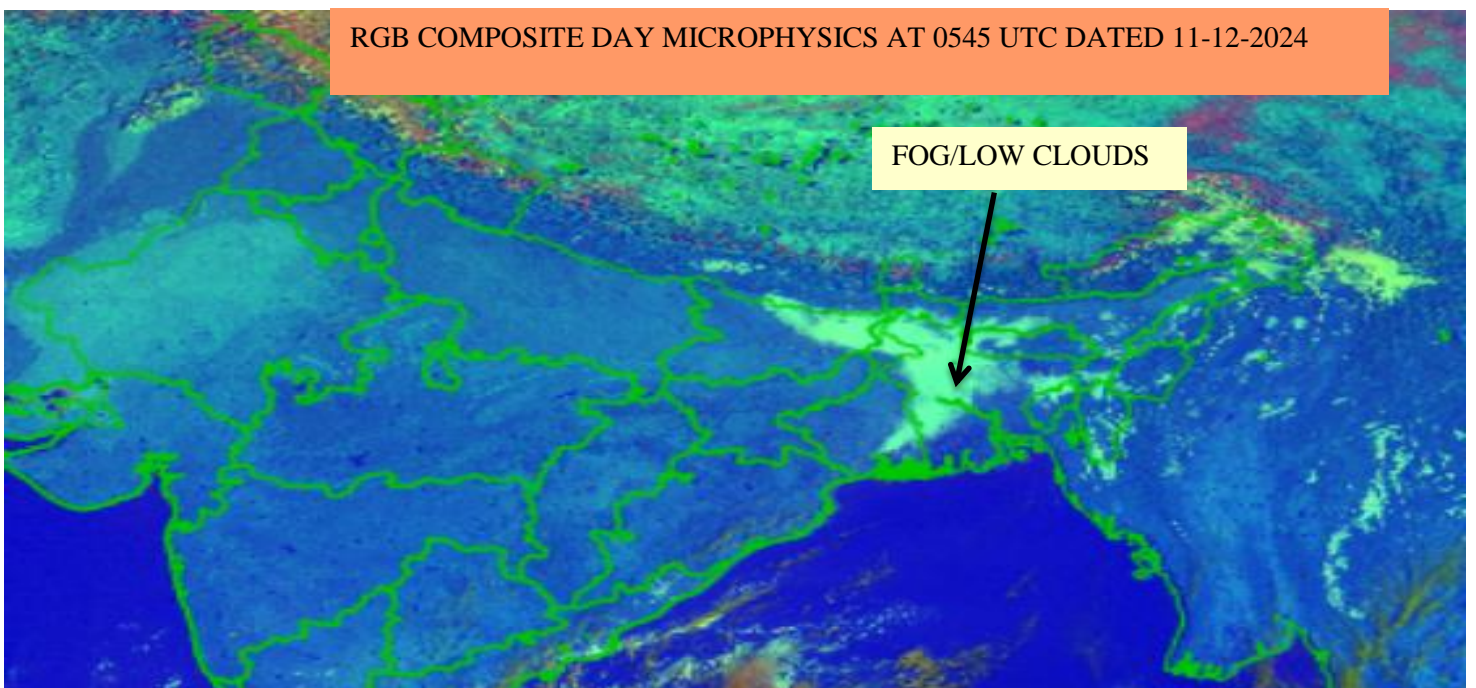
251-350 hPa

351-500 hPa



**FOG / LOW CLOUDS:-**

RGB COMPOSITE DAY MICROPHYSICS IMAGERY OF INSAT 3R (RAPID) AT 0545 UTC SHOWS SCT FOG / LOW CLOUDS OVER NE BHR EXT NE JHRKND SHWB W ASSAM W MEGHA (.)



**CLOUDS DESCRIPTION WITHIN INDIA:-**

**NORTH:-**

SCT LOW/MED CLOUDS WITH EMBDD MOD TO INT CONVTN OVER LADAKH J&K AND WK TO MOD CONVTN OVER N HP N UTRKND (.) ISOL LOW/MED CLOUDS OVER S HP S UTRKND (.)

**EAST:-**

SCT LOW/MED CLOUDS OVER NE BHR SHWB S CHTGH ORS SKM ARUPR E ASSAM REST NE STATES (.)

**WEST:-**

ISOL LOW/MED CLOUDS OVER S MADHYA MAHA GOA (.)

**SOUTH:-**

SCT LOW/MED CLOUDS WITH EMBDD MOD TO INT CONVTN OVER COTL AP S RYLSMA TN SIK ANDAMAN& NICOBAR ILS AREA LKSDP ILS (.) SCT LOW/MED CLOUDS WITH EMBDD WK TO MOD CONVTN OVER KER TLNGN N RYLSM (.) SCT LOW/MED CLOUDS OVER REST KRNTK (.)

**ARABIAN SEA:-**

SCT LOW/MED CLOUDS WITH EMBDD MOD TO INT CONVTN OVER SW ARSEA LKSDP ILS AREA MALDIVES & COMORIN AREA (.) SCT LOW/MED CLOUDS WITH EMBDD ISOL WK TO MOD CONVTN OVER SE & WC ARSEA (.)

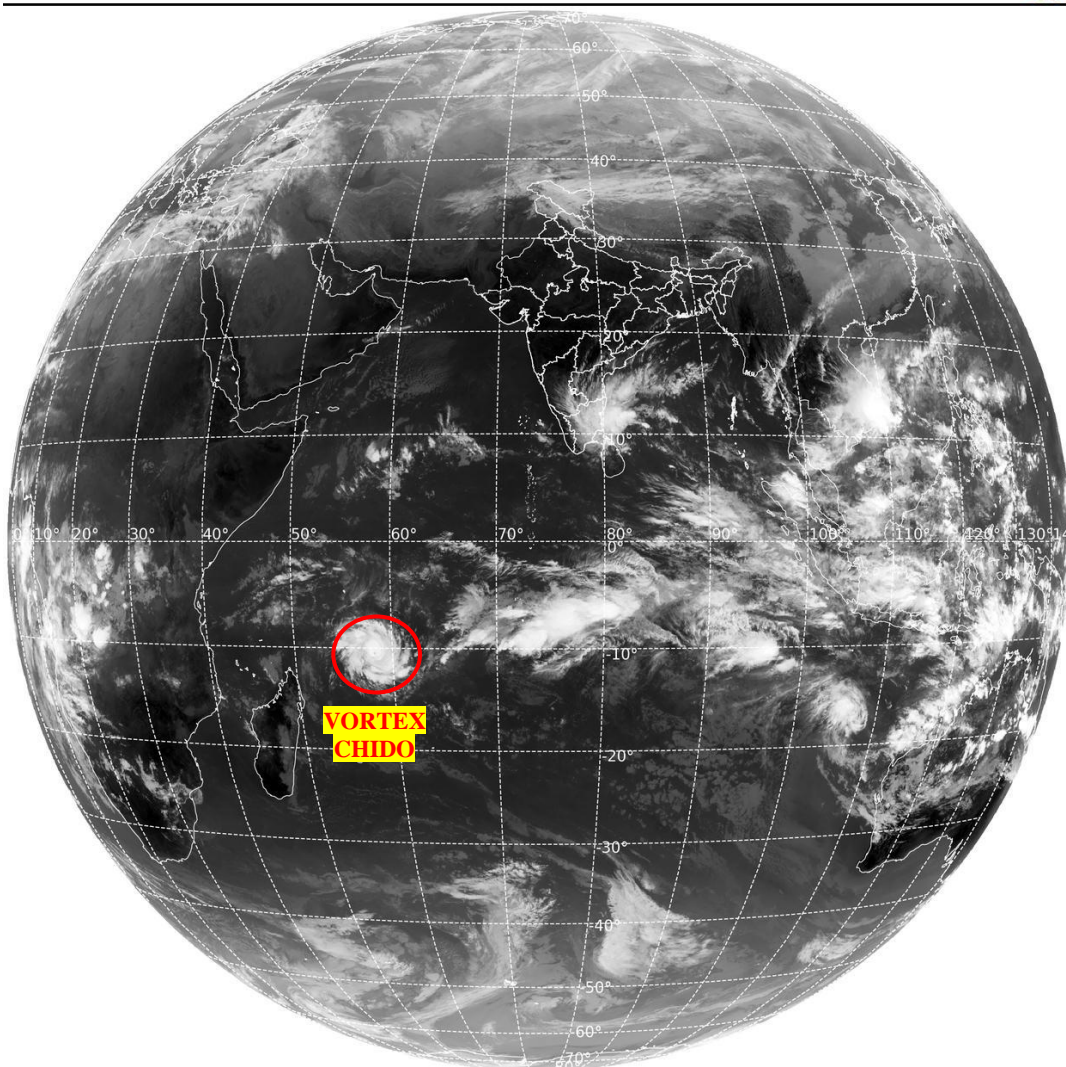
**BAY OF BENGAL & ANDAMAN SEA:-**

SCT LOW/MED CLOUDS WITH EMBDD INT TO V INT CONVTN OVER CENTRAL & SOUTH BAY AND SOUTH ANDAMAN SEA (.) SCT LOW/MED CLOUDS WITH EMBDD MOD TO INT CONVTN OVER NORTH ANDAMAN SEA TENASSERIM COAST AND ISOL WK TO MOD CONVTN OVER NORTH BAY (.)

**CLOUDS DESCRIPTION OUTSIDE INDIA:-**

SAT : INSAT-3DR IMG  
Thermal Infrared1 Count 10.8 um  
L1B FULL DISK

11-12-2024/(0545 to 0612) GMT  
11-12-2024/(1115 to 1142) IST



**VORTEX (CHIDO) OVER SOUTH INDIAN OCEAN:-**

VORTEX (**CHIDO**) OVER SOUTH INDIAN OCEAN (AREA **D40 ADJ D35 & E60**) CENTERED NEAR **10.5S / 58.3E** (.) INTENSITY **T4.0/4.0** (.) MAXIMUM SUSTAINED WINDS OF **48-63 KTS** (.) ASSTD SCT TO BKN LOW/MED CLOUDS WITH EMBDD INT TO V INT CONVTN OVER AREA BET LAT 7.0S TO 13.0S LONG 55.0E TO 62.0E (.)

SCT LOW/MED CLOUDS WITH EMBDD MOD TO INT CONVTN OVER N SRI LANKA PALK STR GULF OF MANNAR MALDIVES TIBET CHINA THAILAND GULF OF THAILAND CAMBODIA LAOS VIETNAM GULF OF TONKIN HAINAN SUMATRA STR OF MALACCA MALAYSIA BORNEO SOUTH CHINA SEA JAVA ILS & SEA CELEBES ILS & SEA PHILIPPINES SULU SEA NORTH MADAGASCAR NORTH MOZAMBIQUE CHANNEL AND OVER INDIAN OCEAN BET LAT 5.0N TO 20.0S LONG 40.0E TO 120.0E (.)

TOO 11/1230EF=

NNNN

**LEGEND:-**

|  |                     |  |
|--|---------------------|--|
| <b>REGION</b>  | <b>NORTH</b>        | <b>J&amp;K HP PJB HARY DLH UP UTRKND</b>                     |
|  | <b>EAST</b>         | <b>BHR JHRKND CHTGH ORS WB SKM NORTH- EAST STATES</b>        |
|  | <b>WEST</b>         | <b>RAJ MP GUJ MAHA GOA</b>                                   |
|  | <b>SOUTH</b>        | <b>TLNGN AP KRNTK KER TN LKSDP ANDAMAN &amp; NICOBAR ILS</b> |
| <b>CLOUD DISTRIBUTION</b>  | <b>ISOL</b>         | <b>ISOLATED (LESS THAN 25%)</b>                              |
|  | <b>SCT</b>          | <b>SCATTERED (25 TO 50%)</b>                                 |
|  | <b>BKN</b>          | <b>BROKEN (51 TO 75%)</b>                                    |
|  | <b>SLD</b>          | <b>SOLID (GREATER THAN 75%)</b>                              |
| <b>CLOUDS TOP TEMPERATURE</b>  | <b>CTT</b>          | <b>CLOUD TOP TEMPERATURE</b>                                 |
| <b>CONVECTION</b>  | <b>WK CONVTN</b>    | <b>WEAK CONVECTION (CTT GREATER THAN -25°C)</b>              |
|  | <b>MOD CONVTN</b>   | <b>MODERATE CONVECTION (CTT BETWEEN -25°C TO -40°C)</b>      |
|  | <b>INT CONVTN</b>   | <b>INTENSE CONVECTION (CTT BETWEEN -41°C TO -70°C)</b>       |
|  | <b>V INT CONVTN</b> | <b>VERY INTENSE CONVECTION (CTT LESS THAN -70°C)</b>         |
| <b>METEOROLOGICAL SUB- DIVISIONS, STATES &amp; UNION TERRITORIES</b> | <b>ARUPR</b>        | <b>ARUNACHAL PRADESH</b>                                     |
|  | <b>BHR</b>          | <b>BIHAR</b>   |
|  | <b>CHTGH</b>        | <b>CHHATTISGARH</b>  |
|  | <b>COTL AP</b>      | <b>COASTAL ANDHRA PRADESH</b>                                |
|  | <b>COTL KRNTK</b>   | <b>COASTAL KARNATAKA</b>                                     |
|  | <b>COTL ORS</b>     | <b>COASTAL ORISSA</b>  |
|  | <b>GUJ</b>          | <b>GUJARAT</b>   |
|  | <b>GWB</b>          | <b>GANGETIC WEST BENGAL</b>                                  |
|  | <b>HARY</b>         | <b>HARYANA</b>   |
|  | <b>DLH</b>          | <b>DELHI</b>   |
|  | <b>HP</b>           | <b>HIMACHAL PRADESH</b>                                      |
|  | <b>J&amp;K</b>      | <b>JAMMU AND KASHMIR</b>                                     |
|  | <b>JHRKND</b>       | <b>JHARKHAND</b>   |

|                      |                        |                                     |
|----------------------|------------------------|-------------------------------------|
|                      | <b>KER</b>             | <b>KERALA</b>                       |
|                      | <b>KKN</b>             | <b>KONKAN</b>                       |
|                      | <b>LKSDP</b>           | <b>LAKSHADWEEP</b>                  |
|                      | <b>M MAHA</b>          | <b>MADHYA MAHARASHTRA</b>           |
|                      | <b>MAHA</b>            | <b>MAHARASHTRA</b>                  |
|                      | <b>MANI</b>            | <b>MANIPUR</b>                      |
|                      | <b>MEGHA</b>           | <b>MEGHALAYA</b>                    |
|                      | <b>MIZO</b>            | <b>MIZORAM</b>                      |
|                      | <b>MP</b>              | <b>MADHYA PRADESH</b>               |
|                      | <b>MRTHWD</b>          | <b>MARATHWADA</b>                   |
|                      | <b>NAGA</b>            | <b>NAGALAND</b>                     |
|                      | <b>N COTL AP</b>       | <b>NORTH COASTAL ANDHRA PRADESH</b> |
|                      | <b>NIK</b>             | <b>NORTH INTERIOR KARNATAKA</b>     |
|                      | <b>ORS</b>             | <b>ORISSA</b>                       |
|                      | <b>PJB</b>             | <b>PUNJAB</b>                       |
|                      | <b>RAJ</b>             | <b>RAJASTHAN</b>                    |
|                      | <b>RYLSM</b>           | <b>RAYALASEEMA</b>                  |
|                      | <b>SAU &amp; KUTCH</b> | <b>SAURASHTRA &amp; KUTCH</b>       |
|                      | <b>SHWB</b>            | <b>SUB-HIMALAYAN WEST BENGAL</b>    |
|                      | <b>SIK</b>             | <b>SOUTH INTERIOR KARNATAKA</b>     |
|                      | <b>SKM</b>             | <b>SIKKIM</b>                       |
|                      | <b>TLNGN</b>           | <b>TELANGANA</b>                    |
|                      | <b>TN</b>              | <b>TAMIL NADU</b>                   |
|                      | <b>TRP</b>             | <b>TRIPURA</b>                      |
|                      | <b>UP</b>              | <b>UTTAR PRADESH</b>                |
|                      | <b>UTRKND</b>          | <b>UTTARAKHAND</b>                  |
|                      | <b>VID</b>             | <b>VIDHARBHA</b>                    |
|                      | <b>SHWB</b>            | <b>SUB HIMALAYAN WEST BENGAL</b>    |
|                      | <b>GWB</b>             | <b>GANGETIC WEST BENGAL</b>         |
|                      | <b>ARSEA</b>           | <b>ARABIAN SEA</b>                  |
|                      | <b>ILS</b>             | <b>ISLANDS</b>                      |
| <b>MISCELLANEOUS</b> | <b>ASSW</b>            | <b>IN ASSOCIATION WITH</b>          |
|                      | <b>ASSTD</b>           | <b>ASSOCIATED</b>                   |
|                      | <b>LLC</b>             | <b>LOW LEVEL CIRCULATION</b>        |
|                      | <b>EMBDD</b>           | <b>EMBEDDED</b>                     |
|                      | <b>N/HOOD</b>          | <b>NEIGHBOURHOOD</b>                |
|                      | <b>EXT</b>             | <b>EXTREME</b>                      |