

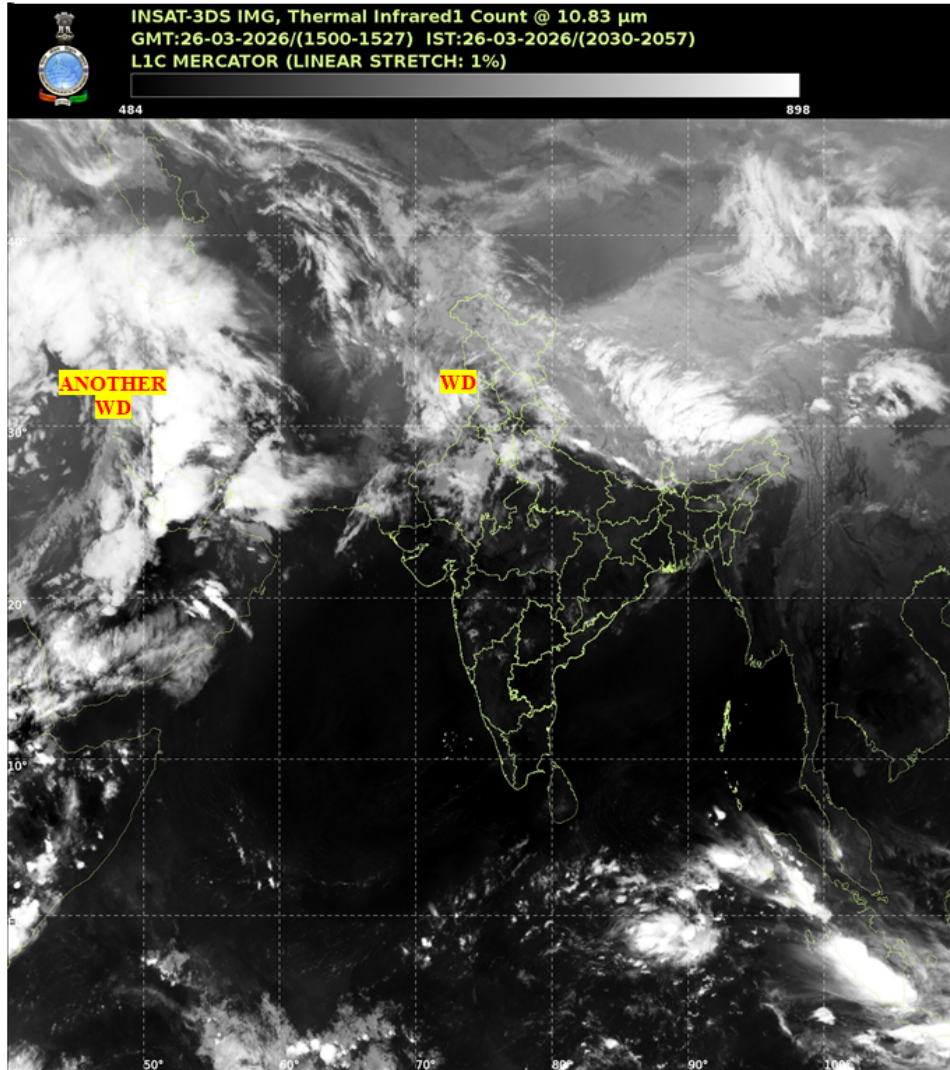


भारत मौसम विज्ञान विभाग
पृथ्वी विज्ञान मंत्रालय
India Meteorological Department
Ministry of Earth Sciences



SATELLITE BULLETIN BASED ON SATELLITE IMAGERIES AND PRODUCTS

Date: 2026-03-26 Time: 15:00:00 UTC



TCIN50 DEMS 261500

SATELLITE BULLETIN BASED ON INSAT-3DS PIC OF 261500 UTC (.)

REGION COVERED BETWEEN LAT 50.0°N TO 35.0°S AND LONG 40.0°E TO 125.0°E (.)

SALIENT FEATURES:

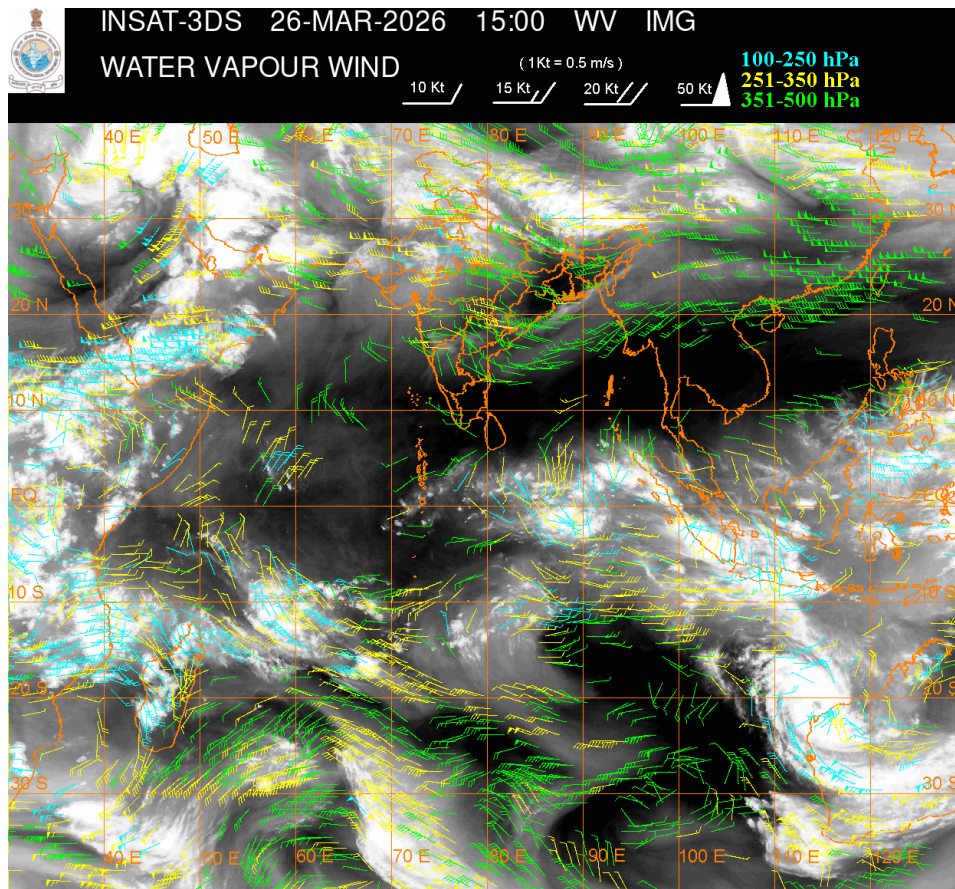
WESTERN DISTURBANCE (WD):-

SCT TO BKN MULTILAYERED CLOUDS OVER AFGAN PAK LADAKH J&K HP UTRKND PJB HARY DLH RAJ N UP NEPAL TIBET ADJ CHINA IN ASSW WD OVER THE AREA (.)

SCT TO BKN MULTILAYERED CLOUDS OVER PERSIAN GULF IRAN AND N/HOOD IN ASSW ANOTHER WD OVER THE AREA (.)

CONVECTIVE / THUNDERSTORM ACTIVITY:-

MODERATE TO INTENSE CONVECTIVE / THUNDERSTORM ACTIVITY OBSERVED OVER LADAKH J&K HP UTRKND PJB HARY W UP RAJ N SHWB (MINIMUM CTT MINUS 50-70 DEGREE CEL) (.)



CLOUD DESCRIPTION WITHIN INDIA:

NORTH:

SCT TO BKN LOW/MED CLOUDS WITH EMBDD MOD TO INT CONVTN OVER LADAKH J&K HP UTRKND PJB HARY DLH W UP (.) SCT LOW/MED CLOUDS OVER EAST UP (.)

EAST:

SCT LOW/MED CLOUDS WITH EMBDD ISOL WK TO MOD CONVTN OVER NORTH SHWB SKM ARUPR NE ASSAM NAGA (.) SCT LOW/MED CLOUDS OVER BHR JHRKND CHTGH ORS SOUTH SHWB REST NE STATES (.)

WEST:

SCT TO BKN LOW/MED CLOUDS WITH EMBDD MOD TO INT CONVTN OVER RAJ(.) SCT LOW/MED CLOUDS WITH EMBDD ISOL WK TO MOD CONVTN OVER N GUJ NW&SE MP (.) SCT LOW/MED CLOUDS OVER REST MP S GUJ MAHA (.)

SOUTH:

ISOL TO SCT LOW/MED CLOUDS OVER NIK TLNGN N COTL AP KER TN & NICOBAR ILS AREA (.)

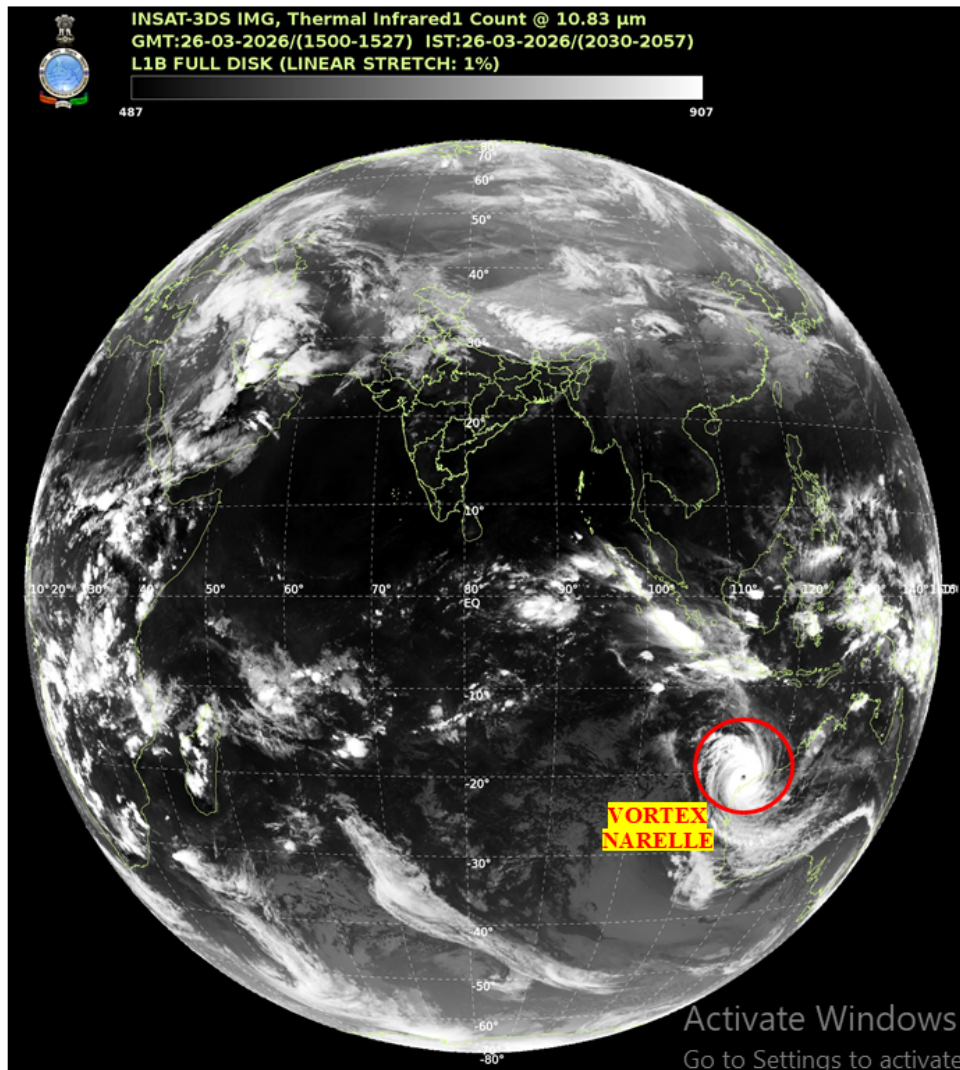
ARABIAN SEA:

SCT LOW/MED CLOUDS WITH EMBDD MOD TO INT CONVTN OVER NORTH ARSEA AND ISOL WK TO MOD CONVTN OVER SW ARSEA (.)

BAY OF BENGAL & ANDAMAN SEA:

SCT LOW/MED CLOUDS WITH EMBDD WK TO MOD CONVTN OVER EXT SE BAY NW BAY OFF ORS-GWB COASTS (.)

CLOUD DESCRIPTION OUTSIDE INDIA:



VORTEX (NARELLE) OVER SOUTH INDIAN OCEAN:-

VORTEX (NARELLE) OVER SOUTH INDIAN OCEAN (AREA G30 ADJ G20) CENTERED NEAR 20.5S / 114.3E (.) INTENSITY T6.0/6.0 (.) MAXIMUM SUSTAINED WINDS 90-119 KTS (.) ASSTD BKN LOW/MED CLOUDS WITH EMBDD INT TO V INT CONVTN OVER AREA BET LAT 15.0S TO 25.0S AND LONG 110.0E TO 120.0E & WEST AUSTRALIA (.)

SCT LOW/MED CLOUDS WITH EMBDD MOD TO INT CONVTN OVER MALDIVES PAK NEPAL BHUTAN TIBET CHINA YELLOW SEA EAST CHINA SEA TAIWAN SUMATRA STR OF MALACCA MALAYSIA BORNEO SOUTH CHINA SEA JAVA ILS & SEA CELEBES ILS & SEA PHILIPPINES SULU SEA NORTH MADAGASCAR NORTH MOZAMBIQUE CHANNEL AND OVER INDIAN OCEAN BET LAT 5.0N TO LAT 20.0S LONG 40.0E TO 125.0E AND BET LAT 20.0S TO LAT 35.0S LONG 50.0E TO 75.0E (.)

T00 26/2150 HRS IST

NNNN

LEGEND

REGION	
NORTH	J&K HP UTRKND PJB HARY DLH UP
EAST	BHR JHRKND CHTGH ORS WB SKM NORTH-EAST STATES

WEST	RAJ MP GUJ MAHA GOA
SOUTH	TLNGN AP KRNTK KER TN LKSDP ANDAMAN & NICOBAR ILS
CLOUD DISTRIBUTION	
ISOL	ISOLATED (LESS THAN 25%)
SCT	SCATTERED (25 TO 50%)
BKN	BROKEN (51 TO 75%)
SLD	SOLID (GREATER THAN 75%)
CLOUDS TOP TEMPERATURE	
CTT	CLOUD TOP TEMPERATURE
CONVECTION	
WK CONVTN	WEAK CONVECTION (CTT GREATER THAN -25°C)
MOD CONVTN	MODERATE CONVECTION (CTT BETWEEN -25°C TO -40°C)
INT CONVTN	INTENSE CONVECTION (CTT BETWEEN -41°C TO -70°C)
V INT CONVTN	VERY INTENSE CONVECTION (CTT LESS THAN -70°C)
METEOROLOGICAL SUB-DIVISIONS, STATES & UNION TERRITORIES	
J&K	JAMMU AND KASHMIR
HP	HIMACHAL PRADESH
UTRKND	UTTARAKHAND
PJB	PUNJAB
HARY	HARYANA
DLH	DELHI
BHR	BIHAR
JHRKND	JHARKHAND
CHTGH	CHHATTISGARH
ORS	ORISSA
GWB	GANGETIC WEST BENGAL
SHWB	SUB-HIMALAYAN WEST BENGAL
SKM	SIKKIM
ARUPR	ARUNACHAL PRADESH
ASSAM	ASSAM
MEGHA	MEGHALAYA
MANI	MANIPUR
MIZO	MIZORAM
TRP	TRIPURA

RAJ	RAJASTHAN
MP	MADHYA PRADESH
GUJ	GUJARAT
SAU & KUTCH	SAURASHTRA & KUTCH
MAHA	MAHARASHTRA
M MAHA	MADHYA MAHARASHTRA
MRTHWD	MARATHWADA
VID	VIDARBHA
KKN	KONKAN
TLNGN	TELANGANA
RYLSM	RAYALSEEMA
COTL AP	COASTAL ANDHRA PRADESH
NIK	NORTH INTERIOR KARNATAKA
SIK	SOUTH INTERIOR KARNATAKA
COTL KRNTK	COASTAL KARNATAKA
KER	KERALA
TN	TAMILNADU
LKSDP	LAKSHADWEEP
ILS	ISLANDS
ARSEA	ARABIAN SEA
MISCELLANEOUS	
ASSW	IN ASSOCIATION WITH
ASSTD	ASSOCIATED
LLC	LOW LEVEL CIRCULATION
EMBDD	EMBEDDED
N/HOOD	NEIGHBOURHOOD
EXT	EXTREME