



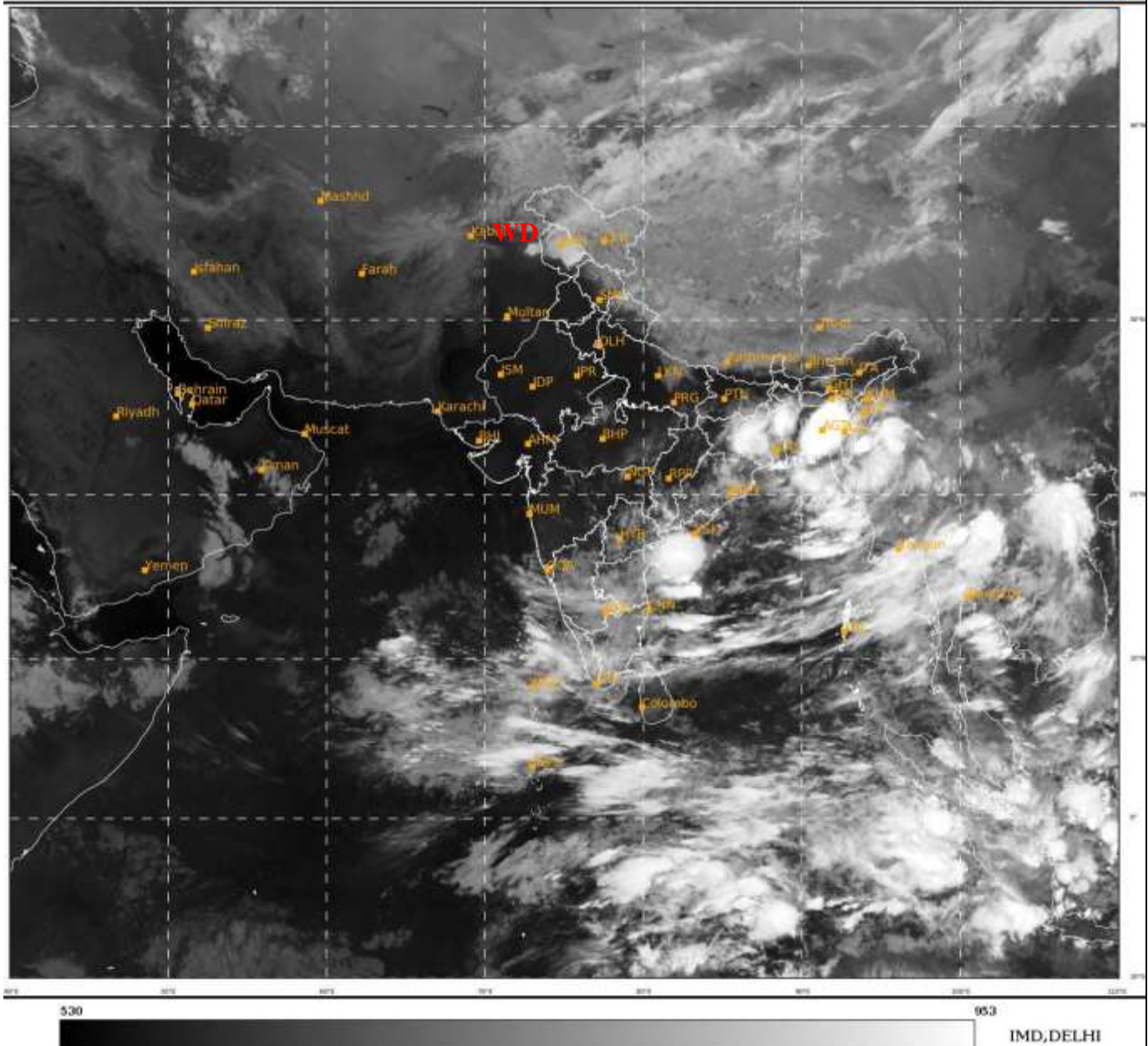
भारत मौसम विज्ञान विभाग
पृथ्वी विज्ञान मंत्रालय
India Meteorological Department
Ministry of Earth Sciences



**SATELLITE BULLETIN BASED ON SATELLITE
IMAGERIES AND PRODUCTS**
01.10.2022 TIME 2100 UTC

SAT : INSAT-3D IMG
IMG TIR1 10.8 um
LIC Mercator

01-10-2022/(2100 to 2126) GMT
02-10-2022/(0230 to 0256) IST



TCIN50 DEMS 012100

SATELLITE BULLETIN BASED ON INSAT-3D PIC OF 012100 UTC (.)

REGION COVERED BETWEEN LAT 50.0°N TO 35.0°S AND LONG 40.0°E TO 125.0°E (.)

SALIENT FEATURES:-

WESTERN DISTURBANCE (WD):-

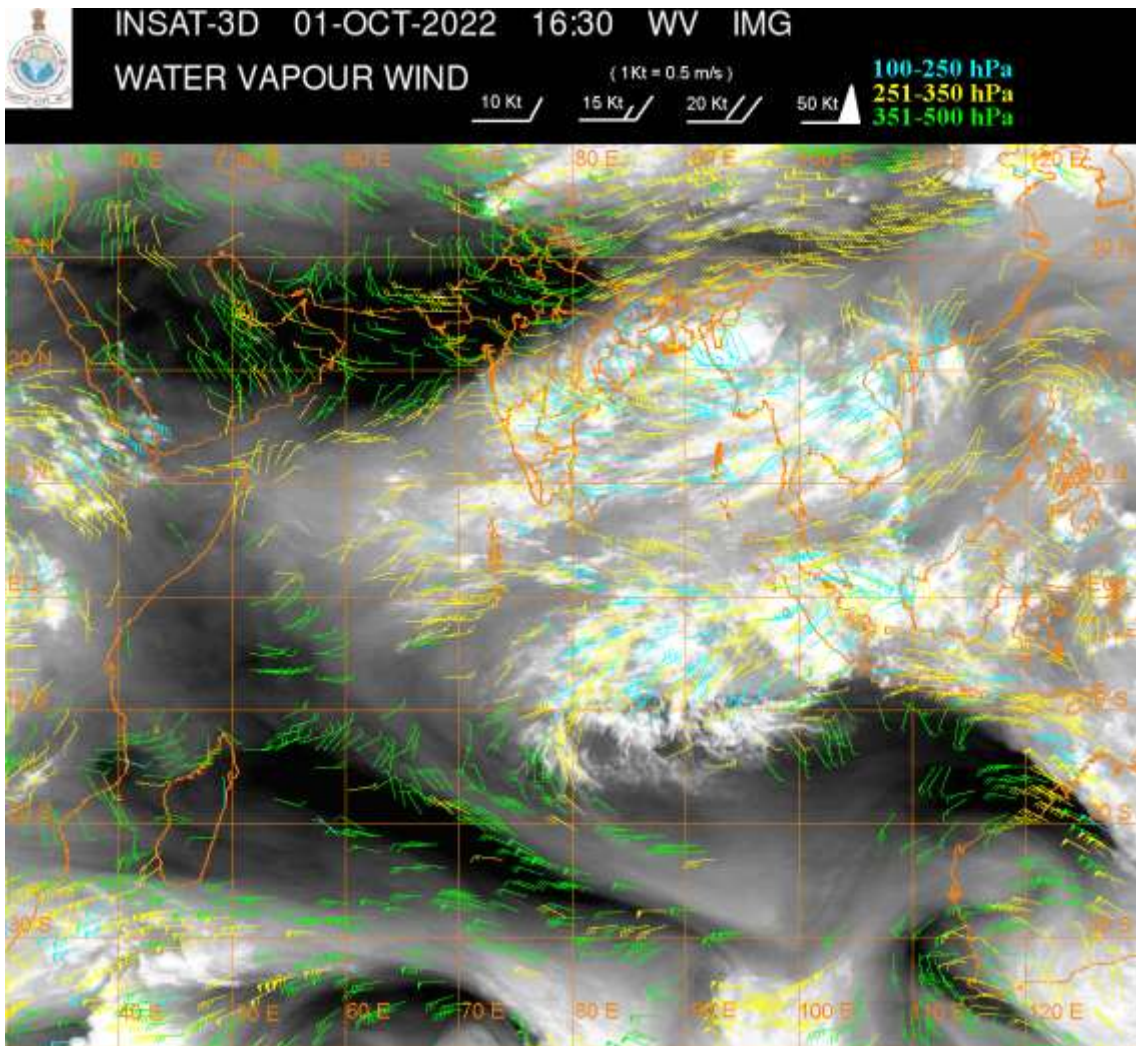
SCT MULTILAYERED CLOUDS OVER N PAK J&K LADAKH TIBET CHINA AND N/HOOD IN ASSW **WD** OVER THE AREA (.)

CONVECTION OVER WC BAY AND N/HOOD:-

INTENSE CONVECTION OVER WC BAY OFF AP COAST & N/HOOD PERSISTS (.) MINIMUM CTT MINUS **93** DEG C (.)

INTENSE CONVECTIVE CLOUDS:-

INTENSE CONVECTIVE CLOUDS OBSERVED OVER E JHRKND GWB MEGH ADJ ASSAM S MIZO TRP & BD COTL AP ANDAMAN ILS (.)



CLOUDS DESCRIPTION WITHIN INDIA:-

NORTH:-

SCT LOW/MED CLOUDS WITH EMBDD MOD TO INT CONVTN OVER J&K ADJ PAK NW LADAKH (.) SCT LOW/MED CLOUDS WITH EMBDD WK CONVTN OVER REST LADAKH N HP N UTRKND NE UP (.) SCT LOW/MED CLOUDS OVER SE HP SE UP (.)

EAST:-

SCT TO BKN LOW/MED CLOUDS WITH EMBDD INT TO V INT CONVTN OVER E JHRKND W & NE GWB MEGHA SC ASSAM S MIZO TRP & BD (MINIMUM CTT MINUS 93 DEG CEL) (.) SCT LOW/MED CLOUDS WITH EMBDD MOD TO INT CONVTN OVER EXT S CHTGH REST GWB MANI REST MIZO (.) SCT LOW/MED CLOUDS WITH EMBDD WK TO MOD CONVTN OVER SW & E BHR REST JHRKND REST CHTGH ORS SKM REST NE STATES (.) SCT LOW/MED CLOUDS OVER REST BHR SHWB (.)

WEST:-

SCT LOW/MED CLOUDS WITH EMBDD ISOL WK CONVTN OVER E RAJ MP MADHYA MAHA S KKN VID MRTHWD GOA (.) SCT LOW/MED CLOUDS OVER E GUJ (.)

SOUTH:-

SCT TO BKN LOW/MED CLOUDS WITH EMBDD INT TO V INT CONVTN OVER N COTL AP NE (MINIMUM CTT MINUS 93 DEG CEL) (.) SCT TO BKN LOW/MED CLOUDS WITH EMBDD MOD TO INT CONVTN OVER E NIK S RYLSM C KER LKSDP ILS ANDAMAN ILS AND WK TO MOD CONVTN OVER KRNTK TLNGN REST RYLSM S COTL AP TN NICOBAR ILS (.)

ARABIAN SEA:-

SCT LOW/MED CLOUDS WITH EMBDD MOD TO INT CONVTN OVER EC ARSEA & SOUTH ARSEA LKSDP ILS AREA AND COMORIN AREA (.) SCT LOW/MED CLOUDS WITH EMBDD ISOL WK TO MOD CONVTN OVER WC ARSEA (.)

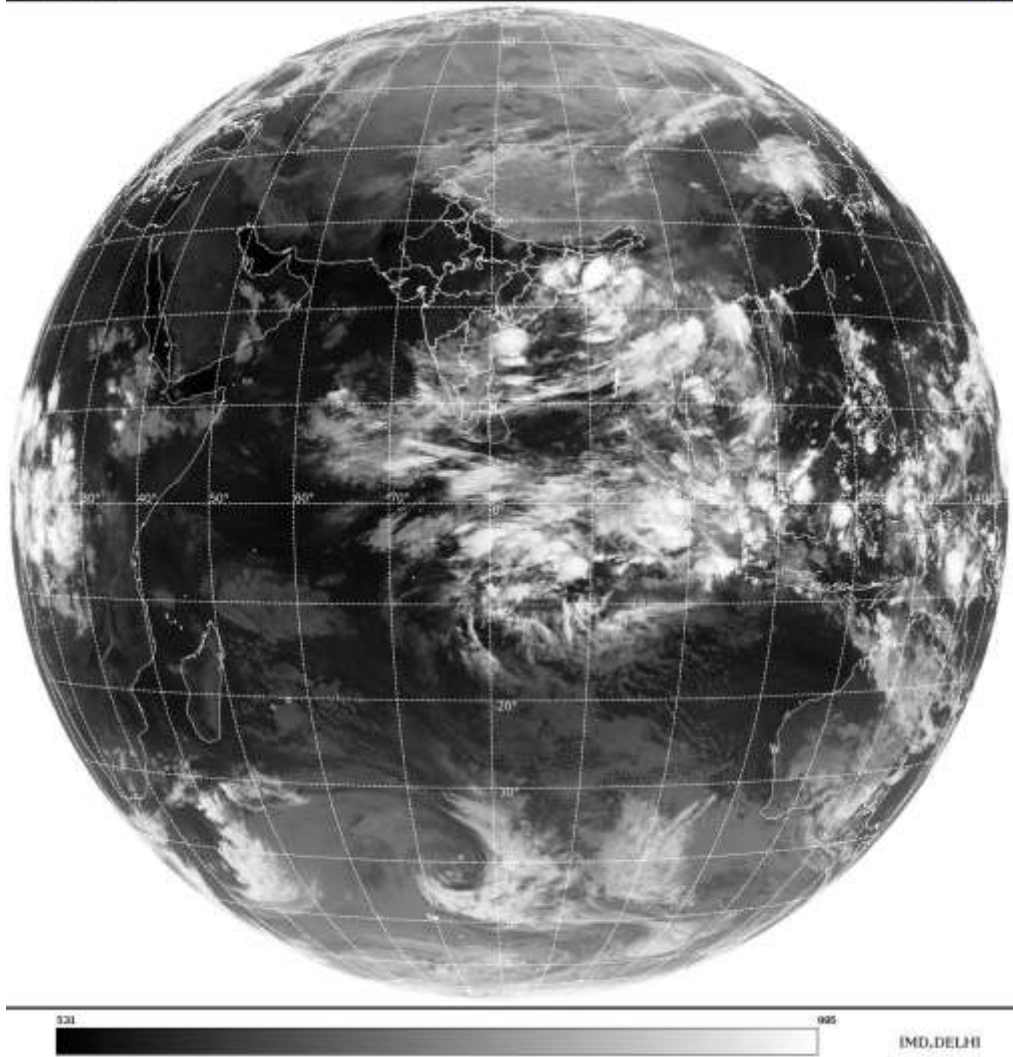
BAY OF BENGAL & ANDAMAN SEA:-

SCT TO BKN LOW/MED CLOUDS WITH EMBDD INT TO V INT CONVTN OVER BAY ANDAMAN SEA ARAKAN COAST AND GULF OF MARTABAN (.) (.) SCT LOW/MED CLOUDS WITH EMBDD MOD TO INT CONVTN OVER TENASSERIM COAST (.)

CLOUDS DESCRIPTION OUTSIDE INDIA:-

SAT : INSAT-3D IMG
Thermal Infrared1 Count 10.8 um
LIB FULL DISK

01-10-2022/(2100 to 2126) GMT
02-10-2022/(0230 to 0256) IST



SCT LOW/MED CLOUDS WITH EMBDD MOD TO INT CONVTN OVER SRI LANKA PALK STR GULF OF MANNAR MALDIVES YELLOW SEA TIBET CHINA MYANMAR THAILAND GULF OF THAILAND LAOS VIETNAM GULF OF TONKIN SUMATRA STR OF MALACCA MALAYSIA BORNEO SOUTH CHINA SEA JAVA ILS & SEA CELEBES ILS & SEA PHILIPPINES SULU SEA AND OVER INDIAN OCEAN BET LAT 5.0N TO 6.0S LONG 62.0E TO 105.0E AND BET LAT 6.0S TO 16.5S LONG 75.5E TO 105.0E (.)

TOO 02/0435 HRS IST=

NNNN

LEGEND:-

REGION	NORTH	J&K HP PJB HARY DLH UP UTRKND
	EAST	BHR JHRKND CHTGH OR WB SKM NORTH- EAST STATES
	WEST	RAJ MP GUJ MAHA GOA
	SOUTH	TLNGN AP KRNTK KER TN LKSDP ANDAMAN & NICOBAR ILS

CLOUD DISTRIBUTION	ISOL	ISOLATED (LESS THAN 25%)
	SCT	SCATTERED (25 TO 50%)
	BKN	BROKEN (51 TO 75%)
	SLD	SOLID (GREATER THAN 75%)

CLOUDS TOP TEMPERATURE	CTT	CLOUD TOP TEMPERATURE	
CONVECTION	WK CONV TN	WEAK CONVECTION (CTT GREATER THAN -25°C)	
	MOD CONV TN	MODERATE CONVECTION (CTT BETWEEN -25°C TO -40°C)	
	INT CONV TN	INTENSE CONVECTION (CTT BETWEEN -41°C TO -70°C)	
	V INT CONV TN	VERY INTENSE CONVECTION (CTT LESS THAN -70°C)	
METEOROLOGICAL SUB-DIVISIONS, STATES & UNION TERRITORIES	ARUPR	ARUNACHAL PRADESH	
	BHR	BIHAR	
	CHTGH	CHHATTISGARH	
	COTL AP	COASTAL ANDHRA PRADESH	
	COTL KRNTK	COASTAL KARNATAKA	
	COTL ORS	COASTAL ORISSA	
	GUJ	GUJARAT	
	GWB	GANGETIC WEST BENGAL	
	HARY	HARYANA	
	DLH	DELHI	
	HP	HIMACHAL PRADESH	
	J&K	JAMMU AND KASHMIR	
	JHRKND	JHARKHAND	
	KER	KERALA	
	KKN	KONKAN	
	LKSDP	LAKSHADWEEP	
	M MAHA	MADHYA MAHARASHTRA	
	MAHA	MAHARASHTRA	
	MANI	MANIPUR	
	MEGHA	MEGHALAYA	
	MIZO	MIZORAM	
	MP	MADHYA PRADESH	
		MRTHWD	MARATHWADA
		NAGA	NAGALAND
N COTL AP		NORTH COASTAL ANDHRA PRADESH	
NIK		NORTH INTERIOR KARNATAKA	
ORS		ORISSA	
PJB		PUNJAB	
RAJ		RAJASTHAN	
RYLSM		RAYALASEEMA	
SAU & KUTCH		SAURASHTRA & KUTCH	
SHWB		SUB-HIMALAYAN WEST BENGAL	
SIK		SOUTH INTERIOR KARNATAKA	
SKM		SIKKIM	
TLNGN		TELANGANA	
TN		TAMIL NADU	
TRP		TRIPURA	
UP		UTTAR PRADESH	

	UTRKND	UTTARAKHAND
	VID	VIDHARBHA
	SHWB	SUB HIMALAYAN WEST BENGAL
	GWB	GANGETIC WEST BENGAL
	ARSEA	ARABIAN SEA
	ILS	ISLANDS
MISCELLANEOUS	ASSW	IN ASSOCIATION WITH
	ASSTD	ASSOCIATED
	LLC	LOW LEVEL CIRCULATION
	EMBDD	EMBEDDED
	N/HOOD	NEIGHBOURHOOD
	EXT	EXTREME