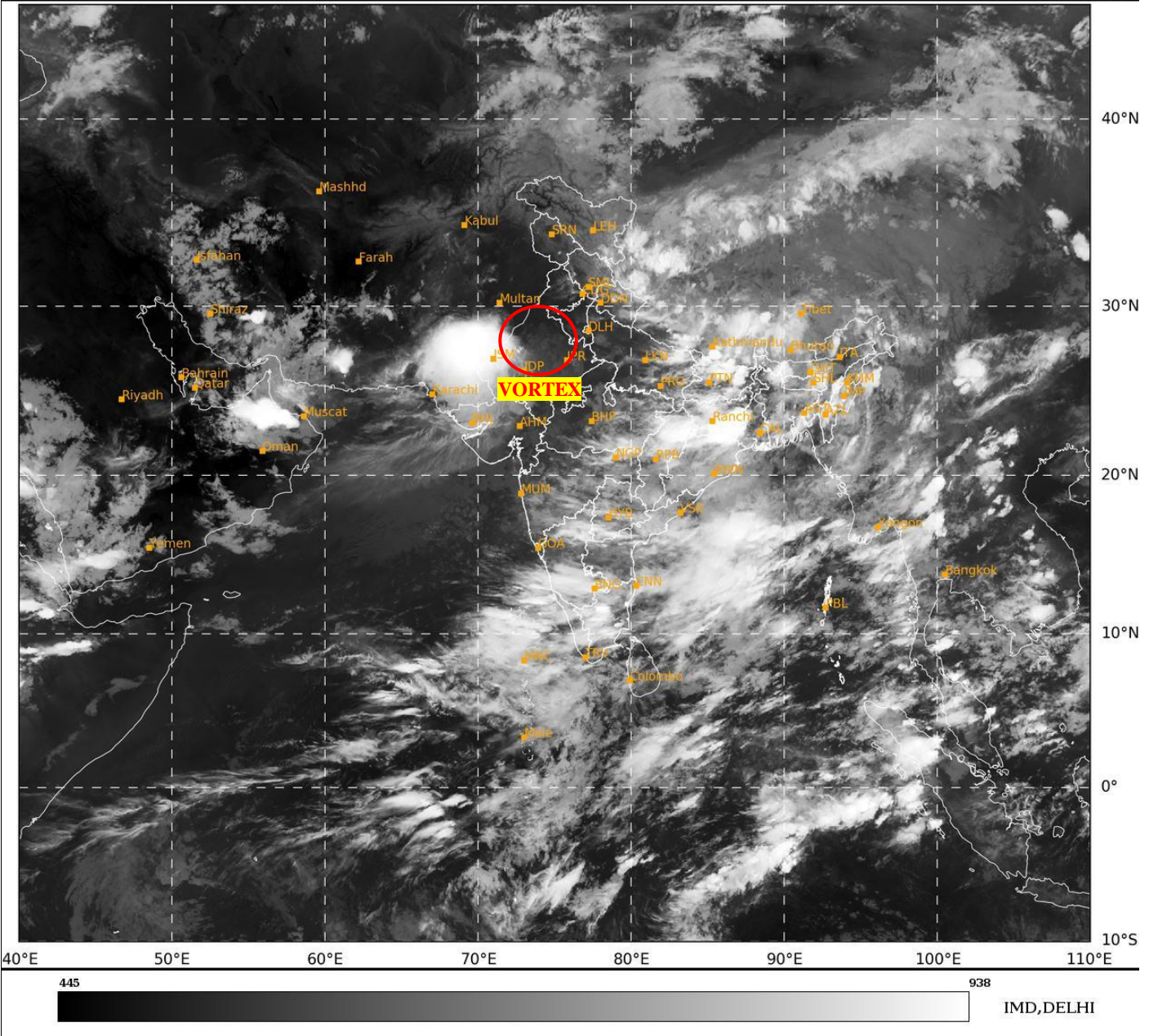




**SATELLITE BULLETIN BASED ON SATELLITE  
IMAGERIES AND PRODUCTS**  
**05.08.2024 TIME 1800 UTC**

SAT : INSAT-3DR IMG  
IMG\_TIR1 10.8 um  
LIC Mercator

05-08-2024/(1715 to 1742) GMT  
05-08-2024/(2245 to 2312) IST



TCIN50 DEMS 051800

SATELLITE BULLETIN BASED ON INSAT-3DR PIC OF 051715 UTC (.)

REGION COVERED BETWEEN LAT 50.0°N TO 35.0°S AND LONG 40.0°E TO 125.0°E (.)

**SALIENT FEATURES:-**

**VORTEX OVER NORTH WEST RAJASTHAN & N/HOOD:-**

VORTEX OVER NORTH WEST RAJASTHAN & N/HOOD (.) ASSTD SCT TO BKN LOW/MED CLOUDS WITH EMBDD INT TO V INT CONVTN OVER SW RAJ ADJ PAK (MINIMUM **CTT MINUS 93 DEG CEL**) MODERATE CONVTN OVER SE RAJ N GUJ (MINIMUM **CTT MINUS 40 DEG CEL**) AND ISOL WK CONVTN OVER NORTH RAJ (.)

**CONVECTIVE / THUNDERSTORM ACTIVITY:-**

INTENSE TO VERY INTENSE CONVECTIVE / THUNDERSTORM ACTIVITY OVER BHR JHRKND N CHTGH N ORS W GWB SHWB SKM NE STATES SW RAJ NIK SIK SW TLNGN TN LKSDP ILS (MINIMUM **CTT MINUS 70-93 DEG CEL**) (.)

MODERATE TO INTENSE CONVECTIVE / THUNDERSTORM ACTIVITY OVER SE LADAKH E HP UTRKND E UP S CHTGH S ORS E GWB SE RAJ N GUJ E MP MRTHWD VID COTL KRNTK REST TLNGN RYLSM COTL AP (MINIMUM **CTT MINUS 50-70 DEG CEL**) (.)



INSAT-3DR 05-AUG-2024 17:15 WV IMG

WATER VAPOUR WIND

(1Kt = 0.5 m/s)

10 Kt

15 Kt

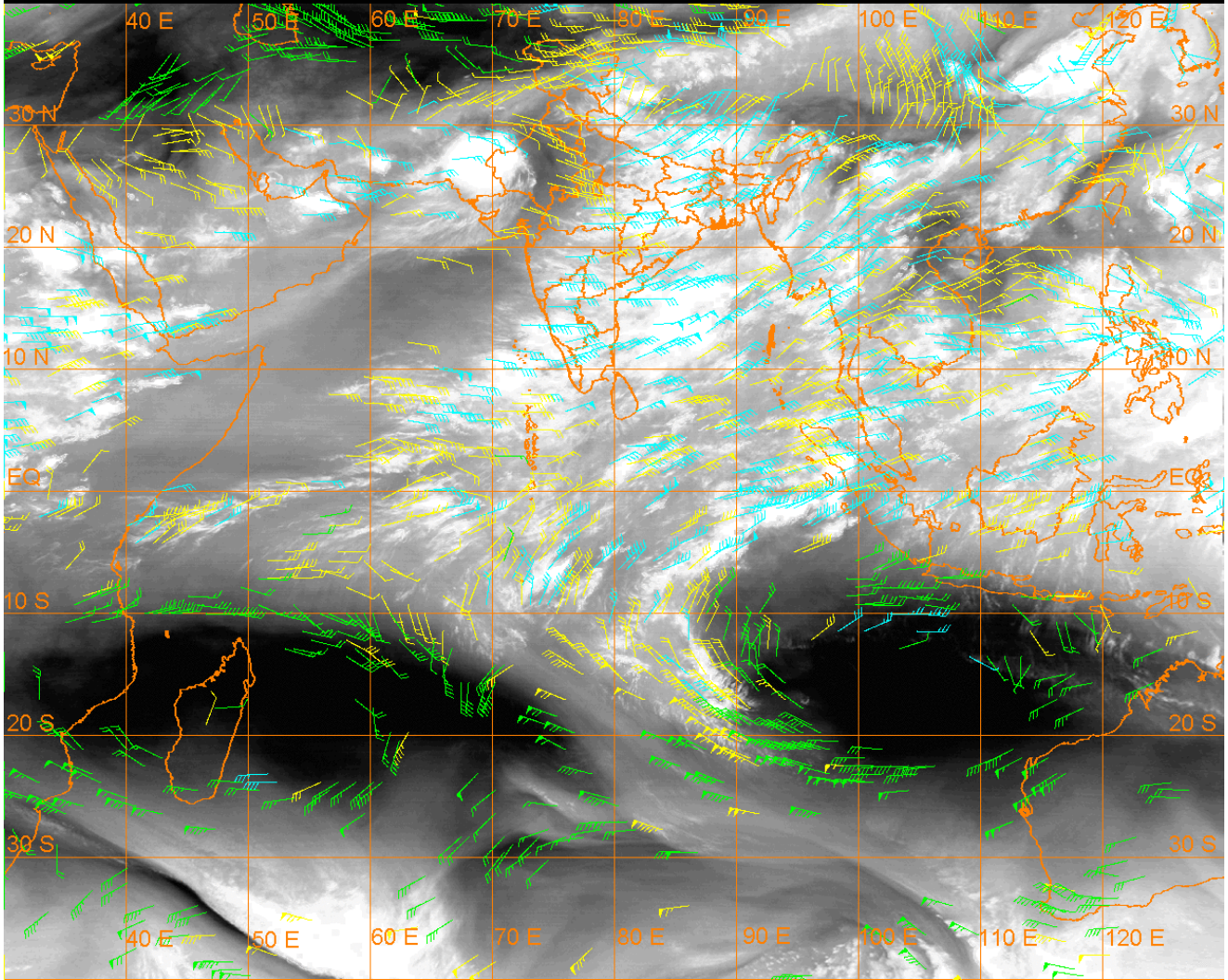
20 Kt

50 Kt

100-250 hPa

251-350 hPa

351-500 hPa



**CLOUDS DESCRIPTION WITHIN INDIA:-**

**NORTH:-**

SCT LOW/MED CLOUDS WITH EMBDD MOD TO INT CONVTN OVER SE LADAKH E HP UTRKND E UP (.) SCT LOW/MED CLOUDS WITH EMBDD ISOL WK TO MOD CONVTN OVER REST LADAKH J&K W HP PJB W UP (.) SCT LOW/MED CLOUDS OVER HARY DLH (.)

**EAST:-**

SCT TO BKN LOW/MED CLOUDS WITH EMBDD INT TO V INT CONVTN OVER BHR JHRKND N CHTGH N ORS W GWB SHWB SKM NE STATES & BD (.) SCT LOW/MED CLOUDS WITH EMBDD MOD TO INT CONVTN OVER S CHTGH S ORS E GWB (.)

**WEST:-**

SCT TO BKN LOW/MED CLOUDS WITH EMBDD INT TO V INT CONVTN OVER SW RAJ (.) SCT LOW/MED CLOUDS WITH EMBDD MOD TO INT CONVTN OVER SE RAJ N GUJ E MP MRTHWD VID (.) SCT LOW/MED CLOUDS WITH EMBDD ISOL WK TO MOD CONVTN OVER N RAJ W MP S GUJ MADHYA MAHA KKN GOA (.)

**SOUTH:-**

SCT TO BKN LOW/MED CLOUDS WITH EMBDD INT TO V INT CONVTN OVER NIK SIK SW TLNGN TN LKSDP ILS (.) SCT LOW/MED CLOUDS WITH EMBDD MOD TO INT CONVTN OVER COTL KRNTK REST TLNGN RYLSM COTL AP AND WK TO MOD CONVTN OVER ANDAMAN & NICOBAR ILS (.)

**ARABIAN SEA:-**

SCT LOW/MED CLOUDS WITH EMBDD INT TO V INT CONVTN OVER EC ARSEA OFF KRNTK COAST SE ARSEA & LKSDP ILS AREA (.) SCT LOW/MED CLOUDS WITH EMBDD MOD TO INT CONVTN OVER EXT NW ARSEA SW ARSEA MALDIVES & COMORIN AREA (.) SCT LOW/MED CLOUDS WITH EMBDD ISOL WK TO MOD CONVTN OVER REST ARSEA & GULF OF KUTCH (.)

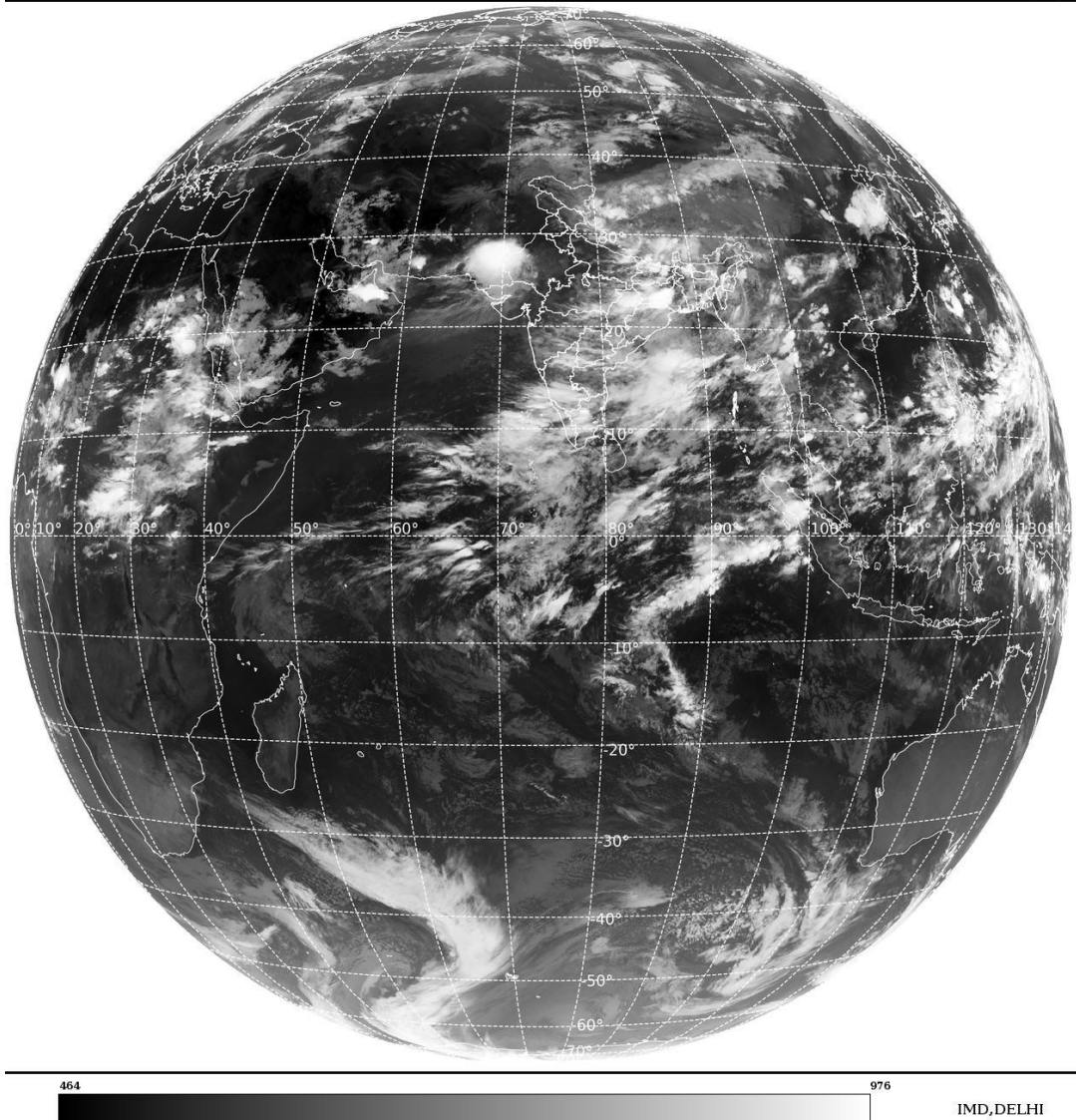
**BAY OF BENGAL & ANDAMAN SEA:-**

**SCT LOW/MED CLOUDS WITH EMBDD INT TO V INT CONVTN OVER CENTRAL & SOUTH BAY ANDAMAN SEA GULF OF MARTABAN & TENASSERIM COAST (.) SCT LOW/MED CLOUDS WITH EMBDD MOD TO INT CONVTN OVER NORTH BAY & ARAKAN COAST (.)**

**CLOUDS DESCRIPTION OUTSIDE INDIA:-**

SAT : INSAT-3DR IMG  
Thermal Infrared1 Count 10.8 um  
L1B FULL DISK

05-08-2024/(1715 to 1742) GMT  
05-08-2024/(2245 to 2312) IST



**SCT LOW/MED CLOUDS WITH EMBDD MOD TO INT CONVTN OVER SRI LANKA PALK STR GULF OF MANNAR MALDIVES S PAK NEPAL BHUTAN TIBET CHINA YELLOW SEA EAST CHINA SEA MYANMAR THAILAND GULF OF THAILAND CAMBODIA LAOS VIETNAM SUMATRA STR OF MALACCA MALAYSIA BORNEO SOUTH CHINA SEA JAVA SEA CELEBES ILS & SEA PHILIPPINES SULU SEA AND OVER INDIAN OCEAN BET LAT 5.0N TO 10.0S LONG 40.0E TO 100.0E AND BET LAT 10.0S TO 20.0S LONG 80.0E TO 90.0E (.)**

**TOO 05/2340 HRS IST=**

**NNNN**

**LEGEND:-**

<b>REGION</b>	<b>NORTH</b>	<b>J&amp;K HP PJB HARY DLH UP UTRKND</b>
	<b>EAST</b>	<b>BHR JHRKND CHTGH OR WB SKM NORTH- EAST STATES</b>
	<b>WEST</b>	<b>RAJ MP GUJ MAHA GOA</b>
	<b>SOUTH</b>	<b>TLNGN AP KRNTK KER TN LKSDP ANDAMAN &amp; NICOBAR ILS</b>

<b>CLOUD DISTRIBUTION</b>	<b>ISOL</b>	<b>ISOLATED (LESS THAN 25%)</b>	
	<b>SCT</b>	<b>SCATTERED (25 TO 50%)</b>	
	<b>BKN</b>	<b>BROKEN (51 TO 75%)</b>	
	<b>SLD</b>	<b>SOLID (GREATER THAN 75%)</b>	
<b>CLOUDS TOP TEMPERATURE</b>	<b>CTT</b>	<b>CLOUD TOP TEMPERATURE</b>	
<b>CONVECTION</b>	<b>WK CONVTN</b>	<b>WEAK CONVECTION (CTT GREATER THAN -25°C)</b>	
	<b>MOD CONVTN</b>	<b>MODERATE CONVECTION (CTT BETWEEN -25°C TO -40°C)</b>	
	<b>INT CONVTN</b>	<b>INTENSE CONVECTION (CTT BETWEEN -41°C TO -70°C)</b>	
	<b>V INT CONVTN</b>	<b>VERY INTENSE CONVECTION (CTT LESS THAN -70°C)</b>	
<b>METEOROLOGICAL SUB- DIVISIONS, STATES &amp; UNION TERRITORIES</b>	<b>ARUPR</b>	<b>ARUNACHAL PRADESH</b>	
	<b>BHR</b>	<b>BIHAR</b>	
	<b>CHTGH</b>	<b>CHHATTISGARH</b>	
	<b>COTL AP</b>	<b>COASTAL ANDHRA PRADESH</b>	
	<b>COTL KRNTK</b>	<b>COASTAL KARNATAKA</b>	
	<b>COTL ORS</b>	<b>COASTAL ORISSA</b>	
	<b>GUJ</b>	<b>GUJARAT</b>	
	<b>GWB</b>	<b>GANGETIC WEST BENGAL</b>	
	<b>HARY</b>	<b>HARYANA</b>	
	<b>DLH</b>	<b>DELHI</b>	
	<b>HP</b>	<b>HIMACHAL PRADESH</b>	
	<b>J&amp;K</b>	<b>JAMMU AND KASHMIR</b>	
	<b>JHRKND</b>	<b>JHARKHAND</b>	
	<b>KER</b>	<b>KERALA</b>	
	<b>KKN</b>	<b>KONKAN</b>	
	<b>LKSDP</b>	<b>LAKSHADWEEP</b>	
	<b>M MAHA</b>	<b>MADHYA MAHARASHTRA</b>	
	<b>MAHA</b>	<b>MAHARASHTRA</b>	
	<b>MANI</b>	<b>MANIPUR</b>	
	<b>MEGHA</b>	<b>MEGHALAYA</b>	
	<b>MIZO</b>	<b>MIZORAM</b>	
	<b>MP</b>	<b>MADHYA PRADESH</b>	
		<b>MRTHWD</b>	<b>MARATHWADA</b>
		<b>NAGA</b>	<b>NAGALAND</b>
<b>N COTL AP</b>		<b>NORTH COASTAL ANDHRA PRADESH</b>	
<b>NIK</b>		<b>NORTH INTERIOR KARNATAKA</b>	
<b>ORS</b>		<b>ORISSA</b>	
<b>PJB</b>		<b>PUNJAB</b>	
<b>RAJ</b>		<b>RAJASTHAN</b>	
<b>RYLSM</b>		<b>RAYALASEEMA</b>	
<b>SAU &amp; KUTCH</b>		<b>SAURASHTRA &amp; KUTCH</b>	
<b>SHWB</b>		<b>SUB-HIMALAYAN WEST BENGAL</b>	
<b>SIK</b>		<b>SOUTH INTERIOR KARNATAKA</b>	
<b>SKM</b>		<b>SIKKIM</b>	

	<b>TLNGN</b>	<b>TELANGANA</b>
	<b>TN</b>	<b>TAMIL NADU</b>
	<b>TRP</b>	<b>TRIPURA</b>
	<b>UP</b>	<b>UTTAR PRADESH</b>
	<b>UTRKND</b>	<b>UTTARAKHAND</b>
	<b>VID</b>	<b>VIDHARBHA</b>
	<b>SHWB</b>	<b>SUB HIMALAYAN WEST BENGAL</b>
	<b>GWB</b>	<b>GANGETIC WEST BENGAL</b>
	<b>ARSEA</b>	<b>ARABIAN SEA</b>
	<b>ILS</b>	<b>ISLANDS</b>
<b>MISCELLANEOUS</b>	<b>ASSW</b>	<b>IN ASSOCIATION WITH</b>
	<b>ASSTD</b>	<b>ASSOCIATED</b>
	<b>LLC</b>	<b>LOW LEVEL CIRCULATION</b>
	<b>EMBDD</b>	<b>EMBEDDED</b>
	<b>N/HOOD</b>	<b>NEIGHBOURHOOD</b>
	<b>EXT</b>	<b>EXTREME</b>