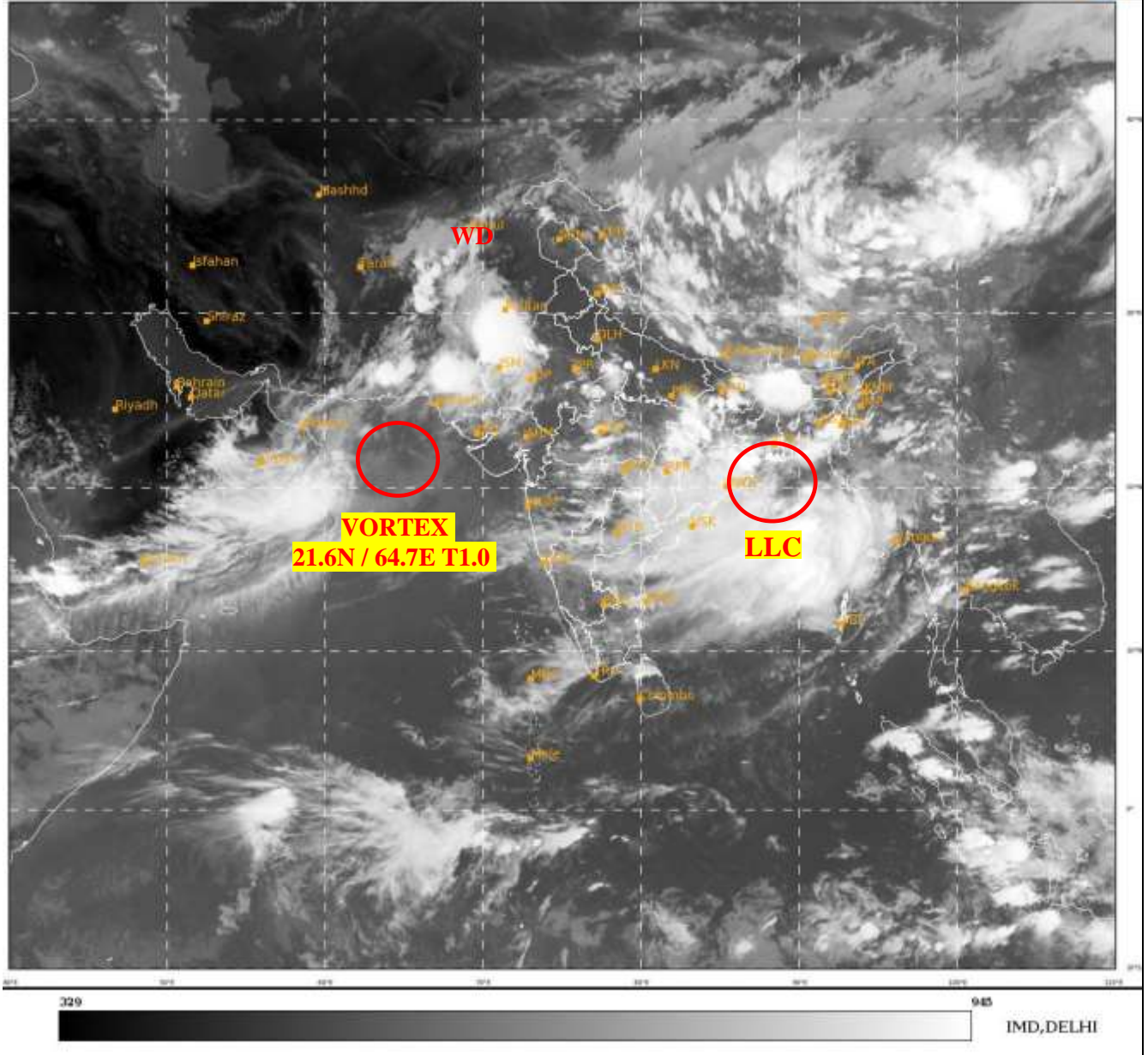




**SATELLITE BULLETIN BASED ON SATELLITE
IMAGERIES AND PRODUCTS**
13.08.2022 TIME 1200 UTC

SAT : INSAT-3D IMG
IMG_TIR1 10.8 um
LIC Mercator

13-08-2022/(1200 to 1226) GMT
13-08-2022/(1730 to 1756) IST



TCIN50 DEMS 131200

SATELLITE BULLETIN BASED ON INSAT-3D PIC OF 131200 UTC (.)

REGION COVERED BETWEEN LAT 50.0°N TO 30.0°S AND LONG 40.0°E TO 125.0°E (.)

SALIENT FEATURES:-

VORTEX OVER CENTRAL PARTS OF NORTH ARABIAN SEA AND N/HOOD:-

VORTEX (WML) OVER CENTRAL PARTS OF NORTH ARSEA & N/HOOD NOW LAY CENTERED NEAR **21.6N / 64.7E** (.) INTENSITY **T1.0** (.) ASSTD BKN LOW/MED CLOUDS WITH EMBDD INT TO V INT CONVTN OVER NW ADJ WC ARSEA & OMAN (.) MINIMUM CTT MINUS **72** DEG C (.) SYSTEM MOVED AGAIN EASTWARDS DURING PAST 03 HOURS (.)

LLC OVER NW BAY & N/HOOD:-

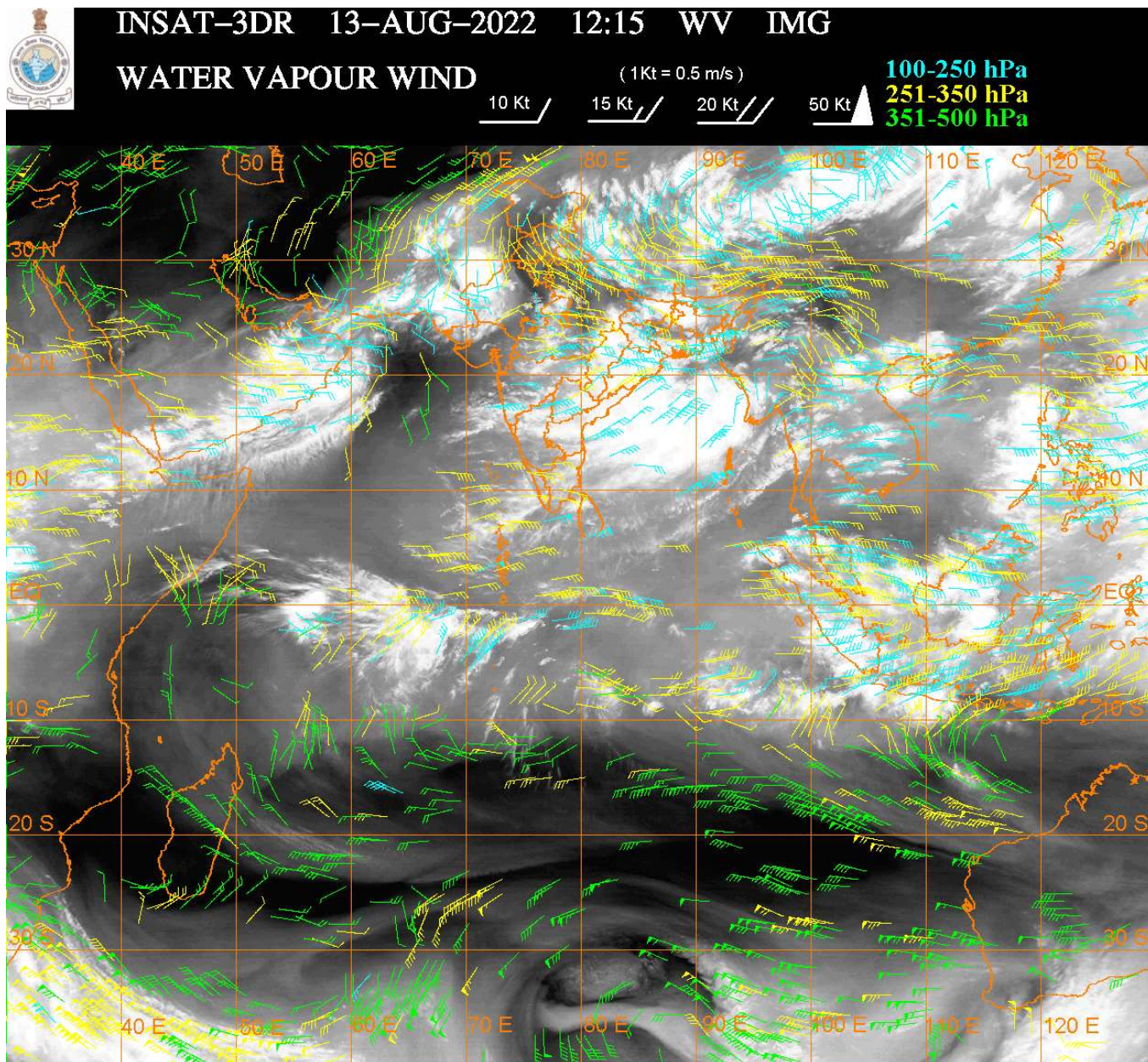
LLC OVER NW BAY & N/HOOD (.) ASSTD BKN LOW/MED CLOUDS WITH EMBDD INT TO V INT CONVTN OVER NORTH ADJ CENTRAL BAY E ORS & COTL GWB (.) MINIMUM CTT MINUS **93** DEG C (.)

WESTERN DISTURBANCE (WD):-

SCT MULTILAYERED CLOUDS OVER AFGAN PAK LADAKH & N/HOOD IN ASSW **WD** OVER THE AREA (.)

INTENSE CONVECTIVE CLOUDS:-

**INTENSE CONVECTIVE CLOUDS OBSERVED OVER N UTRKND W RAJ S UP MP CHTGH ORS
VID N COTL AP JHRKND BHR GWB SHWP W MEGHA ADJ W ASSAM TRP MIZO & BD (.)**



CLOUDS DESCRIPTION WITHIN INDIA:-

NORTH:-

**SCT LOW/MED CLOUDS WITH EMBDD INT TO V INT CONVTN OVER N UTRKND S UP (.)SCT
LOW/MED CLOUDS WITH EMBDD MOD TO INT CONVTN OVER LADAKH E HP AND ISOL WK
TO MOD CONVTN OVER J&K (.) SCT LOW/MED CLOUDS OVER W HP REST UTRKND PJB HARY
DLH REST UP (.)**

EAST:-

**SCT TO BKN LOW/MED CLOUDS WITH EMBDD INT TO V INT CONVTN OVER CHTGH ORS
JHRKND BHR S GWB SHWB W MEGHA ADJ W ASSAM TRP MIZO & BD (MINIMUM CTT MINUS
93 DEG C) SCT LOW/MED CLOUDS WITH EMBDD ISOL WK TO MOD CONVTN OVER N GWB
SKM REST NE STATES (.)**

WEST:-

**SCT TO BKN LOW/MED CLOUDS WITH EMBDD INT TO V INT CONVTN OVER W RAJ ADJ PAK
(MINIMUM CTT MINUS 85 DEG C) (.) SCT LOW/MED CLOUDS WITH EMBDD MOD TO INT
CONVTN OVER E RAJ MP MAHA AND ISOL WK TO MOD CONVTN OVER N GUJ GOA (.) SCT
LOW/MED CLOUDS OVER S GUJ (.)**

SOUTH:-

**SCT LOW/MED CLOUDS WITH EMBDD MOD TO INT CONVTN OVER TLNGN COTL AP RYLSM
NIK NE TN (.) SCT LOW/MED CLOUDS WITH EMBDD ISOL WK TO MOD CONVTN OVER REST
KRNTK KER REST TN & ANDAMAN ILS (.) SCT LOW/MED CLOUDS OVER LKSDP ILS &
NICOBAR ILS (.)**

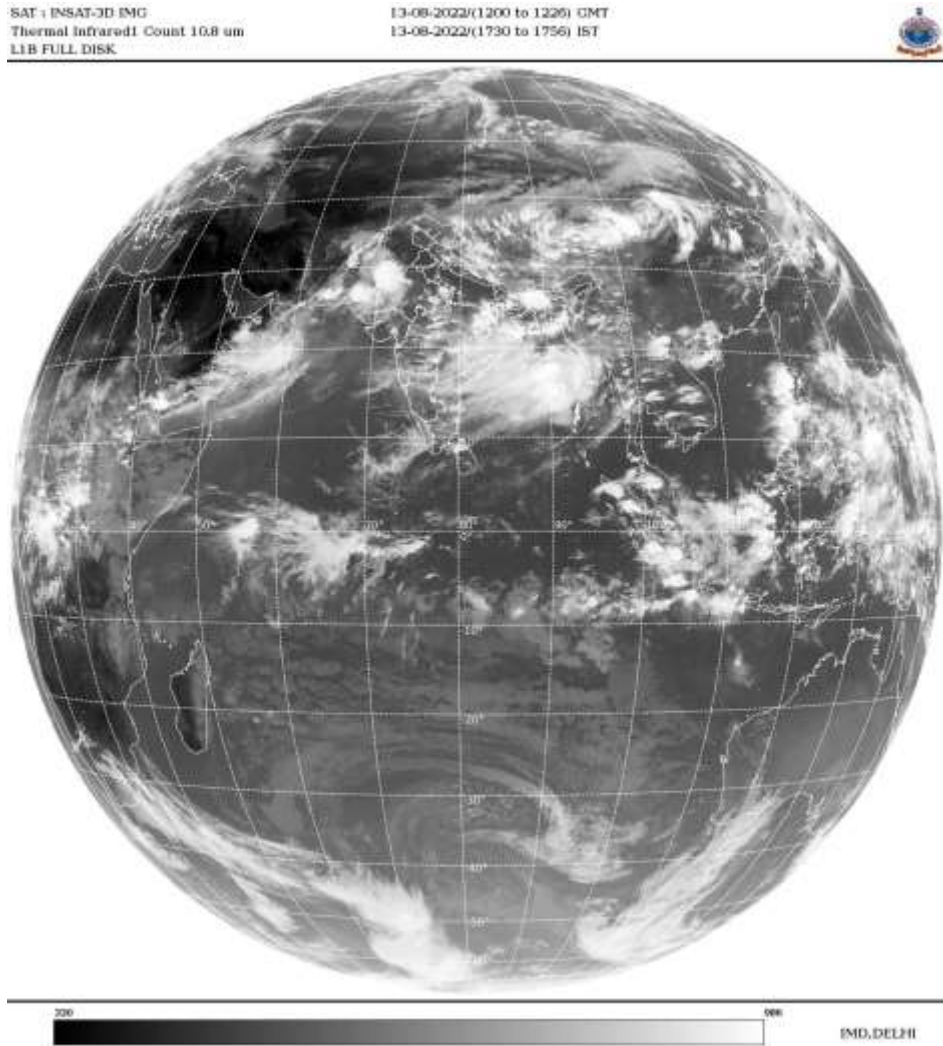
ARABIAN SEA:-

SCT TO BKN LOW/MED CLOUDS WITH EMBDD INT TO V INT CONVTN OVER NW & WC ARSEA (MINIMUM CTT MINUS 72 DEG C) (.) SCT LOW/MED CLOUDS WITH EMBDD ISOL WK TO MOD CONVTN OVER E ARSEA (.)

BAY OF BENGAL & ANDAMAN SEA:-

SCT TO BKN LOW/MED CLOUDS WITH EMBDD INT TO V INT CONVTN OVER NORTH & CENTRAL BAY AND MOD TO INT CONVTN OVER N ANDAMAN SEA (.) SCT LOW/MED CLOUDS WITH EMBDD ISOL WK TO MOD CONVTN OVER S BAY (.)

CLOUDS DESCRIPTION OUTSIDE INDIA:-



SCT LOW/MED CLOUDS WITH EMBDD MOD TO INT CONVTN OVER N SRILANKA PAK NEPAL BHUTAN TIBET CHINA MYANMAR THAILAND GULF OF THAILAND CAMBODIA LAOS VIETNAM GULF OF TONKIN HAINAN SUMATRA STR OF MALACCA MALAYSIA BORNEO SOUTH CHINA SEA JAVA ILS & SEA CELEBES ILS & SEA PHILIPPINES SULU SEA E CHINA SEA AND OVER INDIAN OCEAN BET LAT 2.0N TO 10.0S LONG 55.0E TO 110.0E (.)

TOO 13/1850 HRS IST=

NNNN

LEGEND:-

| | | |
|--------|-------|--|
| REGION | NORTH | J&K HP PJB HARY DLH UP UTRKND |
| | EAST | BHR JHRKND CHTGH OR WB SKM NORTH- EAST STATES |
| | WEST | RAJ MP GUJ MAHA GOA |
| | SOUTH | TLNGN AP KRNTK KER TN LKSDP ANDAMAN & NICOBAR ILS |

| | | | |
|---|---------------------|---|-------------------|
| CLOUD DISTRIBUTION | ISOL | ISOLATED (LESS THAN 25%) | |
| | SCT | SCATTERED (25 TO 50%) | |
| | BKN | BROKEN (51 TO 75%) | |
| | SLD | SOLID (GREATER THAN 75%) | |
| CLOUDS TOP TEMPERATURE | CTT | CLOUD TOP TEMPERATURE | |
| CONVECTION | WK CONVTN | WEAK CONVECTION (CTT GREATER THAN -25°C) | |
| | MOD CONVTN | MODERATE CONVECTION (CTT BETWEEN -25°C TO -40°C) | |
| | INT CONVTN | INTENSE CONVECTION (CTT BETWEEN -41°C TO -70°C) | |
| | V INT CONVTN | VERY INTENSE CONVECTION (CTT LESS THAN -70°C) | |
| METEOROLOGICAL SUB-DIVISIONS, STATES & UNION TERRITORIES | ARUPR | ARUNACHAL PRADESH | |
| | BHR | BIHAR | |
| | CHTGH | CHHATTISGARH | |
| | COTL AP | COASTAL ANDHRA PRADESH | |
| | COTL KRNTK | COASTAL KARNATAKA | |
| | COTL ORS | COASTAL ORISSA | |
| | GUJ | GUJARAT | |
| | GWB | GANGETIC WEST BENGAL | |
| | HARY | HARYANA | |
| | DLH | DELHI | |
| | HP | HIMACHAL PRADESH | |
| | J&K | JAMMU AND KASHMIR | |
| | JHRKND | JHARKHAND | |
| | KER | KERALA | |
| | KKN | KONKAN | |
| | LKSDP | LAKSHADWEEP | |
| | M MAHA | MADHYA MAHARASHTRA | |
| | MAHA | MAHARASHTRA | |
| | MANI | MANIPUR | |
| | MEGHA | MEGHALAYA | |
| | MIZO | MIZORAM | |
| | MP | MADHYA PRADESH | |
| | | MRTHWD | MARATHWADA |
| | | NAGA | NAGALAND |
| N COTL AP | | NORTH COASTAL ANDHRA PRADESH | |
| NIK | | NORTH INTERIOR KARNATAKA | |
| ORS | | ORISSA | |
| PJB | | PUNJAB | |
| RAJ | | RAJASTHAN | |
| RYLSM | | RAYALASEEMA | |
| SAU & KUTCH | | SAURASHTRA & KUTCH | |
| SHWB | | SUB-HIMALAYAN WEST BENGAL | |
| SIK | | SOUTH INTERIOR KARNATAKA | |
| SKM | | SIKKIM | |

| | | |
|----------------------|---------------|----------------------------------|
| | TLNGN | TELANGANA |
| | TN | TAMIL NADU |
| | TRP | TRIPURA |
| | UP | UTTAR PRADESH |
| | UTRKND | UTTARAKHAND |
| | VID | VIDHARBHA |
| | SHWB | SUB HIMALAYAN WEST BENGAL |
| | GWB | GANGETIC WEST BENGAL |
| | ARSEA | ARABIAN SEA |
| | ILS | ISLANDS |
| MISCELLANEOUS | ASSW | IN ASSOCIATION WITH |
| | ASSTD | ASSOCIATED |
| | LLC | LOW LEVEL CIRCULATION |
| | EMBDD | EMBEDDED |
| | N/HOOD | NEIGHBOURHOOD |
| | EXT | EXTREME |