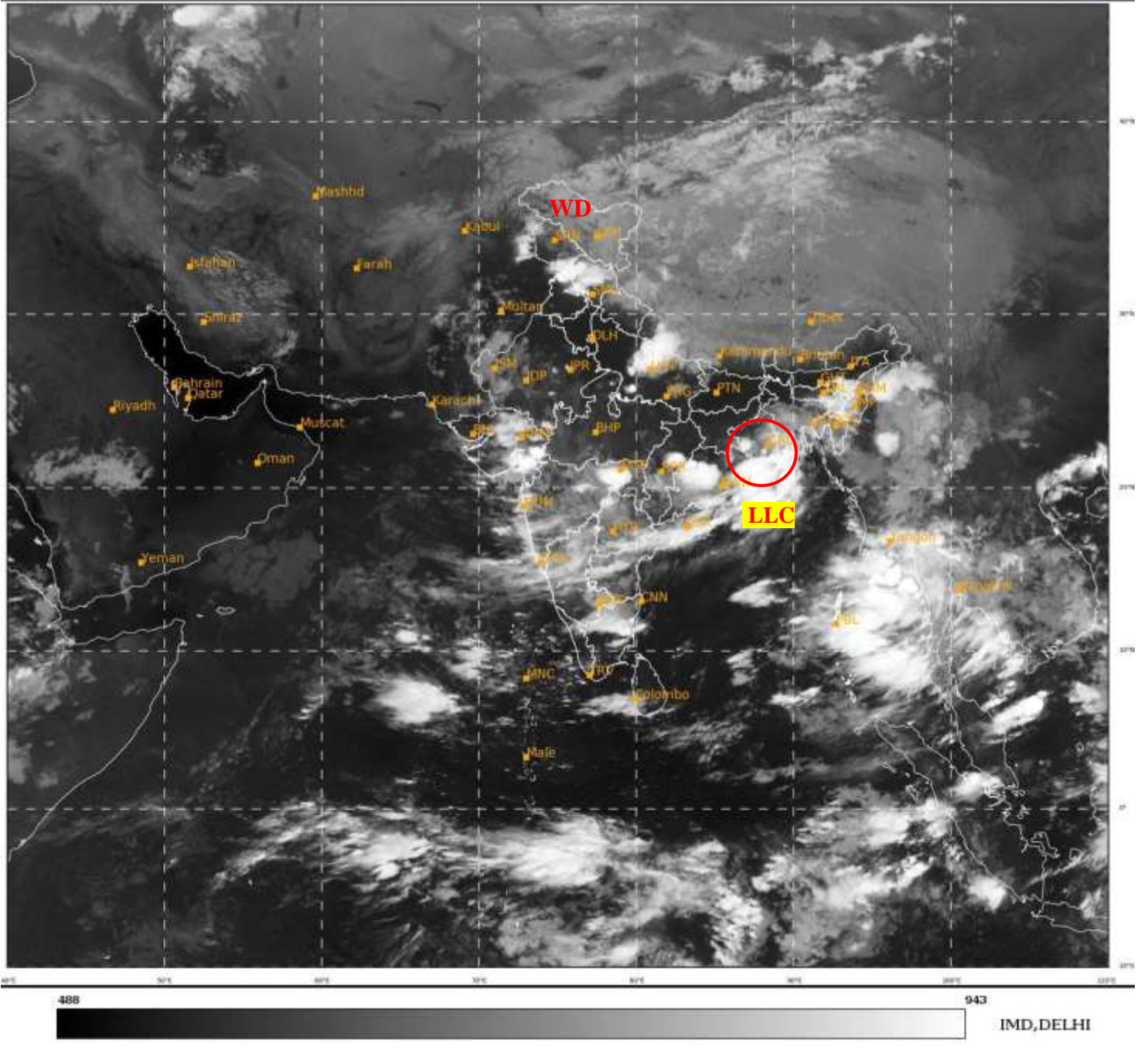




**SATELLITE BULLETIN BASED ON SATELLITE**  
**IMAGERIES AND PRODUCTS**  
**21.09.2021 TIME 0000 UTC**

SAT : INSAT-3D IMG  
IMG\_TIR1 10.8 um  
LIC Mercator

21-09-2021/(0000 to 0026) GMT  
21-09-2021/(0530 to 0556) IST



TCIN50 DEMS 210000  
SATELLITE BULLETIN BASED ON INSAT-3D PIC OF 210000 UTC (.)  
REGION COVERED BETWEEN LAT 50.0°N TO 30.0°S AND LONG 40.0°E TO 125.0°E (.)

**SALIENT FEATURES:-**

**LLC OVER SOUTH GWB & N/HOOD:-**

**LLC** OVER SOUTH GWB & N/HOOD (.) ASSTD SCT TO BKN LOW/MED CLOUDS WITH EMBDD INT TO V INT CONVTN OVER N COTL ORS S GWB ADJ SW BD & NW BAY (.) MINIMUM CTT MINUS **80** DEG CEL (.)

**WESTERN DISTURBANCE (WD):-**

SCT MULTILAYERED CLOUDS OVER N PAK J&K HP N PJB LADAKH & N/HOOD IN ASSW **WD** OVER THE AREA (.)





INSAT-3D 21-SEP-2021 00:00 WV IMG

WATER VAPOUR WIND

(1Kt = 0.5 m/s)

10 Kt

15 Kt

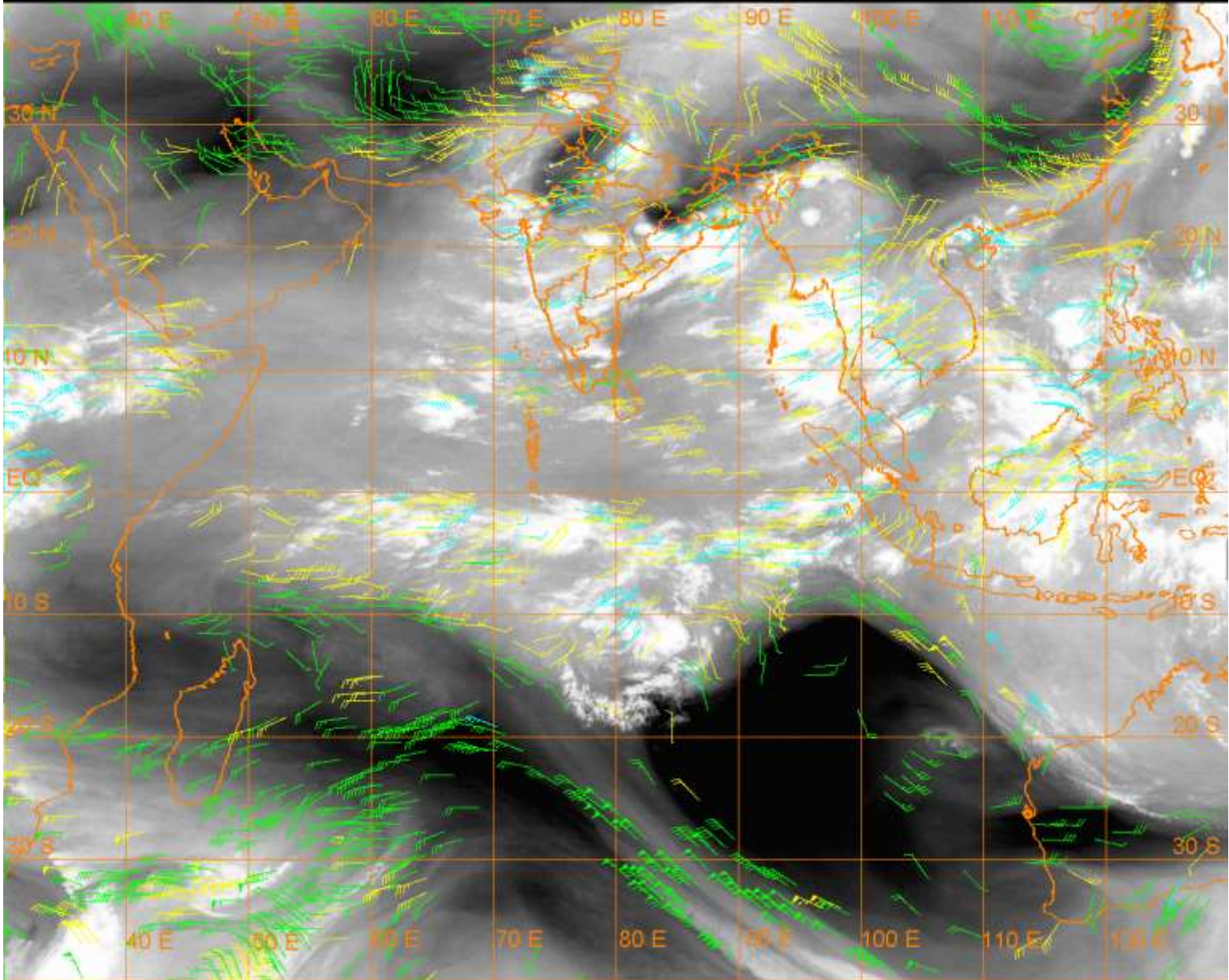
20 Kt

50 Kt

100-250 hPa

251-350 hPa

351-500 hPa



### **CLOUDS DESCRIPTION WITHIN INDIA:-**

#### **NORTH:-**

SCT LOW/MED CLOUDS WITH EMBDD INT TO V INT CONVTN OVER C UP AND MOD TO INT CONVTN OVER S J&K HP N PJB (.) SCT LOW/MED CLOUDS WITH EMBDD WK TO MOD CONVTN OVER LADAKH REST J&K N UTRKND REST E UP (.) SCT LOW/MED CLOUDS OVER S UTRKND REST PJB W HARY (.)

#### **EAST:-**

SCT TO BKN LOW/MED CLOUDS WITH EMBDD INT TO V INT CONVTN OVER N CHTGH N ORS S GWB ADJ SW BD (MINIMUM CTT MINUS 80 DEG C) (.) SCT LOW/MED CLOUDS WITH EMBDD MOD TO INT CONVTN OVER S CHTGH S ORS E MEGHA S ASSAM NAGA MANI N MIZO AND WK TO MOD CONVTN OVER NW BHR SE JHRKND N GWB SKM S MIZO TRP & REST BD (.) SCT LOW/MED CLOUDS OVER REST JHRKND SHWB REST NE STATES (.)

#### **WEST:-**

SCT LOW/MED CLOUDS WITH EMBDD INT TO V INT CONVTN OVER SE GUJ VID AND MOD TO INT CONVTN OVER REST GUJ REST MAHA & GOA (.) SCT LOW/MED CLOUDS WITH EMBDD ISOL WK TO MOD CONVTN OVER RAJ W MP (.) SCT LOW/MED CLOUDS OVER E MP (.)

#### **SOUTH:-**

SCT LOW/MED CLOUDS WITH EMBDD MOD TO INT CONVTN OVER TLNGN RYLSM COTL AP KRNTK N TN ANDAMAN ILS AND ISOL WK TO MOD CONVTN OVER KER REST TN LKSDP & NICOBAR ILS (.)

#### **ARABIAN SEA:-**



**SCT LOW/MED CLOUDS WITH EMBDD MOD TO INT CONVTN OVER EC ARSEA OFF MAHA COAST GULF OF CAMBAY AND SE ARSEA (.)**

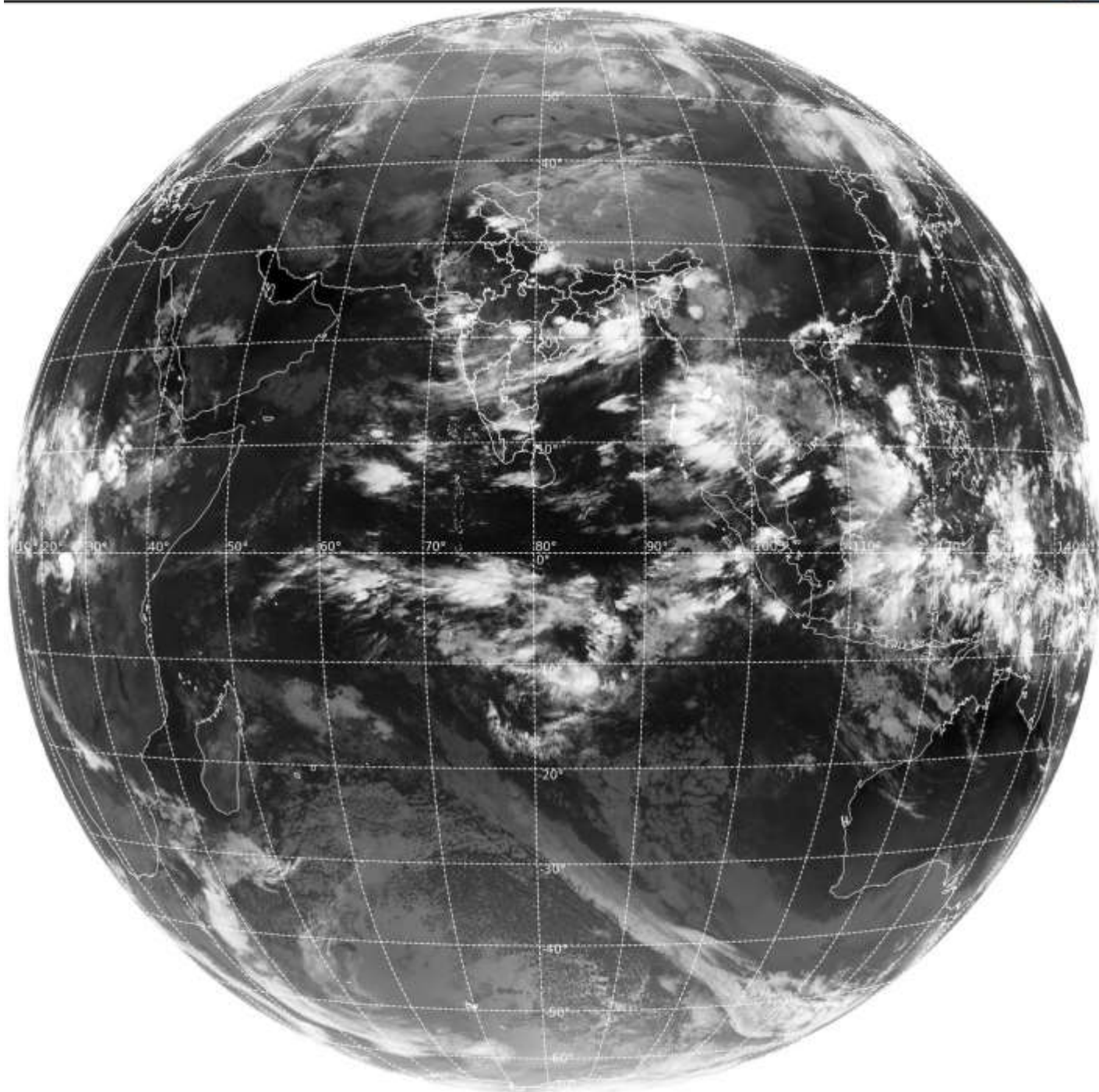
**BAY OF BENGAL & ANDAMAN SEA:-**

**SCT TO BKN LOW/MED CLOUDS WITH EMBDD INT TO V INT CONVTN OVER NW ADJ WC BAY & ANDAMAN SEA (.) SCT LOW/MED CLOUDS WITH EMBDD MOD TO INT CONVTN OVER SE ADJ EC BAY (.)**

**CLOUDS DESCRIPTION OUTSIDE INDIA:-**

SAT : INSAT-3D IMG  
Thermal Infrared1 Count 10.8 um  
LIB FULL DISK

21-09-2021/(0000 to 0026) GMT  
21-09-2021/(0530 to 0556) IST



488

971

IMD, DELHI

**SCT LOW/MED CLOUDS WITH EMBDD MOD TO INT CONVTN OVER S SRI LANKA N MALDIVES PAK NEPAL TIBET ADJ CHINA MYANMAR THAILAND GULF OF THAILAND CAMBODIA LAOS VIETNAM HAINAN GULF OF TONKIN SUMATRA STR OF MALACCA MALAY PENINSULA BORNEO SOUTH CHINA SEA JAVA ILS & SEA CELEBES ILS & SEA PHILIPPINES AND OVER INDIAN OCEAN BET EQ TO LAT 10.0S LONG 56.0E TO 100.0E AND BET LAT 10.0S TO 18.0S LONG 75.0E TO 90.0E (.)**

**TOO 21/0640EF=**

**NNNN**

**LEGEND:-**

|               |              |                                                                  |
|---------------|--------------|------------------------------------------------------------------|
| <b>REGION</b> | <b>NORTH</b> | <b>J&amp;K HP PJB HARY DLH UP UTRKND</b>                         |
|               | <b>EAST</b>  | <b>BHR JHRKND CHTGH ORS WB<br/>SKMNORTH- EAST STATES</b>         |
|               | <b>WEST</b>  | <b>RAJ MP GUJ MAHA GOA</b>                                       |
|               | <b>SOUTH</b> | <b>TLNGN AP KRNTK KER TN LKSDP<br/>ANDAMAN &amp; NICOBAR ILS</b> |

|                                                                     |                     |                                                             |                   |
|---------------------------------------------------------------------|---------------------|-------------------------------------------------------------|-------------------|
| <b>CLOUD DISTRIBUTION</b>                                           | <b>ISOL</b>         | <b>ISOLATED (LESS THAN 25%)</b>                             |                   |
|                                                                     | <b>SCT</b>          | <b>SCATTERED (25 TO 50%)</b>                                |                   |
|                                                                     | <b>BKN</b>          | <b>BROKEN (51 TO 75%)</b>                                   |                   |
|                                                                     | <b>SLD</b>          | <b>SOLID (GREATER THAN 75%)</b>                             |                   |
| <b>CLOUDS TOP TEMPERATURE</b>                                       | <b>CTT</b>          | <b>CLOUD TOP TEMPERATURE</b>                                |                   |
| <b>CONVECTION</b>                                                   | <b>WK CONVTN</b>    | <b>WEAK CONVECTION<br/>(CTT GREATER THAN -25°C)</b>         |                   |
|                                                                     | <b>MOD CONVTN</b>   | <b>MODERATE CONVECTION<br/>(CTT BETWEEN -25°C TO -40°C)</b> |                   |
|                                                                     | <b>INT CONVTN</b>   | <b>INTENSE CONVECTION<br/>(CTT BETWEEN -41°C TO -70°C)</b>  |                   |
|                                                                     | <b>V INT CONVTN</b> | <b>VERY INTENSE CONVECTION<br/>(CTT LESS THAN -70°C)</b>    |                   |
| <b>METEOROLOGICAL SUB-DIVISIONS, STATES &amp; UNION TERRITORIES</b> | <b>ARUPR</b>        | <b>ARUNACHAL PRADESH</b>                                    |                   |
|                                                                     | <b>BHR</b>          | <b>BIHAR</b>                                                |                   |
|                                                                     | <b>CHTGH</b>        | <b>CHHATTISGARH</b>                                         |                   |
|                                                                     | <b>COTL AP</b>      | <b>COASTAL ANDHRA PRADESH</b>                               |                   |
|                                                                     | <b>COTL KRNTK</b>   | <b>COASTAL KARNATAKA</b>                                    |                   |
|                                                                     | <b>COTL ORS</b>     | <b>COASTAL ORISSA</b>                                       |                   |
|                                                                     | <b>GUJ</b>          | <b>GUJARAT</b>                                              |                   |
|                                                                     | <b>GWB</b>          | <b>GANGETIC WEST BENGAL</b>                                 |                   |
|                                                                     | <b>HARY</b>         | <b>HARYANA</b>                                              |                   |
|                                                                     | <b>DLH</b>          | <b>DELHI</b>                                                |                   |
|                                                                     | <b>HP</b>           | <b>HIMACHAL PRADESH</b>                                     |                   |
|                                                                     | <b>J&amp;K</b>      | <b>JAMMU AND KASHMIR</b>                                    |                   |
|                                                                     | <b>JHRKND</b>       | <b>JHARKHAND</b>                                            |                   |
|                                                                     | <b>KER</b>          | <b>KERALA</b>                                               |                   |
|                                                                     | <b>KKN</b>          | <b>KONKAN</b>                                               |                   |
|                                                                     | <b>LKSDP</b>        | <b>LAKSHADWEEP</b>                                          |                   |
|                                                                     | <b>M MAHA</b>       | <b>MADHYA MAHARASHTRA</b>                                   |                   |
|                                                                     | <b>MAHA</b>         | <b>MAHARASHTRA</b>                                          |                   |
|                                                                     | <b>MANI</b>         | <b>MANIPUR</b>                                              |                   |
|                                                                     | <b>MEGHA</b>        | <b>MEGHALAYA</b>                                            |                   |
|                                                                     | <b>MIZO</b>         | <b>MIZORAM</b>                                              |                   |
|                                                                     | <b>MP</b>           | <b>MADHYA PRADESH</b>                                       |                   |
|                                                                     |                     | <b>MRTHWD</b>                                               | <b>MARATHWADA</b> |
|                                                                     |                     | <b>NAGA</b>                                                 | <b>NAGALAND</b>   |
| <b>N COTL AP</b>                                                    |                     | <b>NORTH COASTAL ANDHRA PRADESH</b>                         |                   |
| <b>NIK</b>                                                          |                     | <b>NORTH INTERIOR KARNATAKA</b>                             |                   |

|                      |                        |                                  |
|----------------------|------------------------|----------------------------------|
|                      | <b>ORS</b>             | <b>ORISSA</b>                    |
|                      | <b>PJB</b>             | <b>PUNJAB</b>                    |
|                      | <b>RAJ</b>             | <b>RAJASTHAN</b>                 |
|                      | <b>RYLSM</b>           | <b>RAYALASEEMA</b>               |
|                      | <b>SAU &amp; KUTCH</b> | <b>SAURASHTRA &amp; KUTCH</b>    |
|                      | <b>SHWB</b>            | <b>SUB-HIMALAYAN WEST BENGAL</b> |
|                      | <b>SIK</b>             | <b>SOUTH INTERIOR KARNATAKA</b>  |
|                      | <b>SKM</b>             | <b>SIKKIM</b>                    |
|                      | <b>TLNGN</b>           | <b>TELANGANA</b>                 |
|                      | <b>TN</b>              | <b>TAMIL NADU</b>                |
|                      | <b>TRP</b>             | <b>TRIPURA</b>                   |
|                      | <b>UP</b>              | <b>UTTAR PRADESH</b>             |
|                      | <b>UTRKN</b>           | <b>UTTARAKHAND</b>               |
|                      | <b>VID</b>             | <b>VIDHARBHA</b>                 |
|                      | <b>SHWB</b>            | <b>SUB HIMALAYAN WEST BENGAL</b> |
|                      | <b>GWB</b>             | <b>GANGETIC WEST BENGAL</b>      |
|                      | <b>ARSEA</b>           | <b>ARABIAN SEA</b>               |
|                      | <b>ILS</b>             | <b>ISLANDS</b>                   |
| <b>MISCELLANEOUS</b> | <b>ASSW</b>            | <b>IN ASSOCIATION WITH</b>       |
|                      | <b>ASSTD</b>           | <b>ASSOCIATED</b>                |
|                      | <b>LLC</b>             | <b>LOW LEVEL CIRCULATION</b>     |
|                      | <b>EMBDD</b>           | <b>EMBEDDED</b>                  |
|                      | <b>N/HOOD</b>          | <b>NEIGHBOURHOOD</b>             |
|                      | <b>EXT</b>             | <b>EXTREME</b>                   |