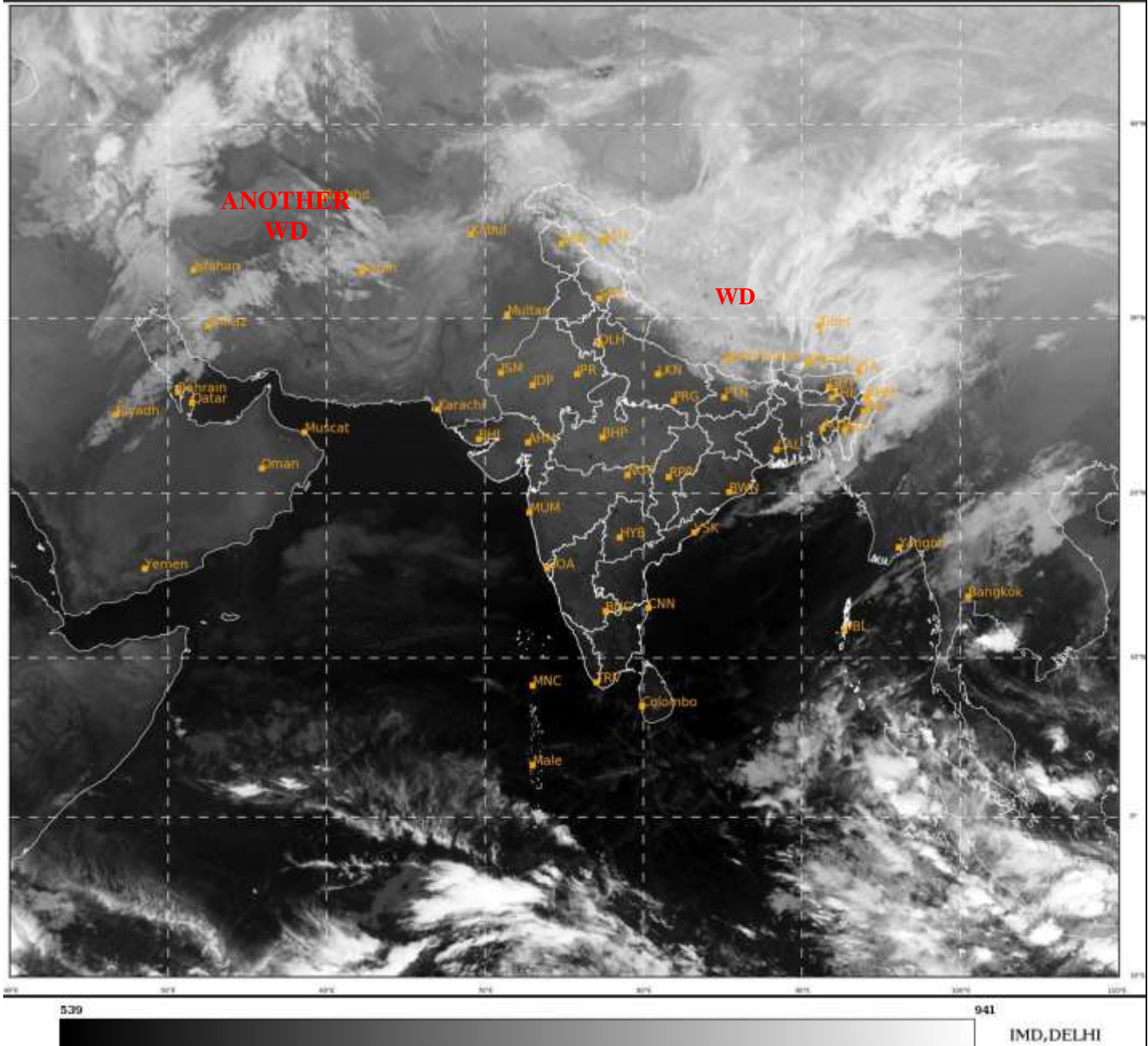




**SATELLITE BULLETIN BASED ON SATELLITE  
IMAGERIES AND PRODUCTS**  
**05.02.2022 TIME 0000 UTC**

SAT : INSAT-3D IMG  
IMG\_TIR1 10.8 um  
L1C Mercator

05-02-2022/(0000 to 0026) GMT  
05-02-2022/(0530 to 0556) IST



TCIN50 DEMS 050000

SATELLITE BULLETIN BASED ON INSAT-3D PIC OF 050000 UTC (.)

REGION COVERED BETWEEN LAT 50.0°N TO 30.0°S AND LONG 40.0°E TO 125.0°E (.)

**SALIENT FEATURES:-**

**WESTERN DISTURBANCE (WD):-**

SCT MULTILAYERED CLOUDS OVER NEPAL TIBET ADJ CHINA AND N/HOOD IN ASSW **WD** OVER THE AREA (.)

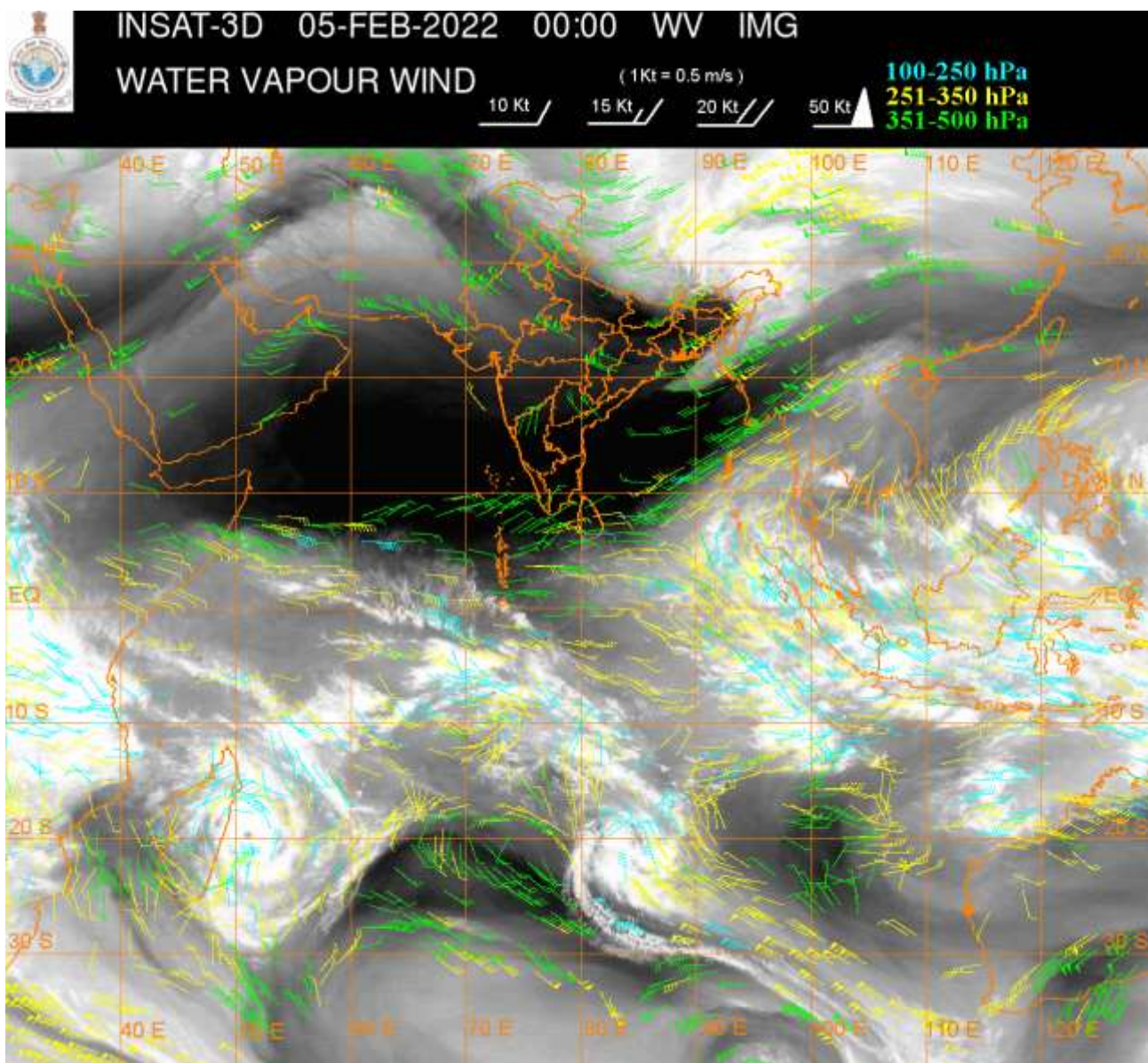
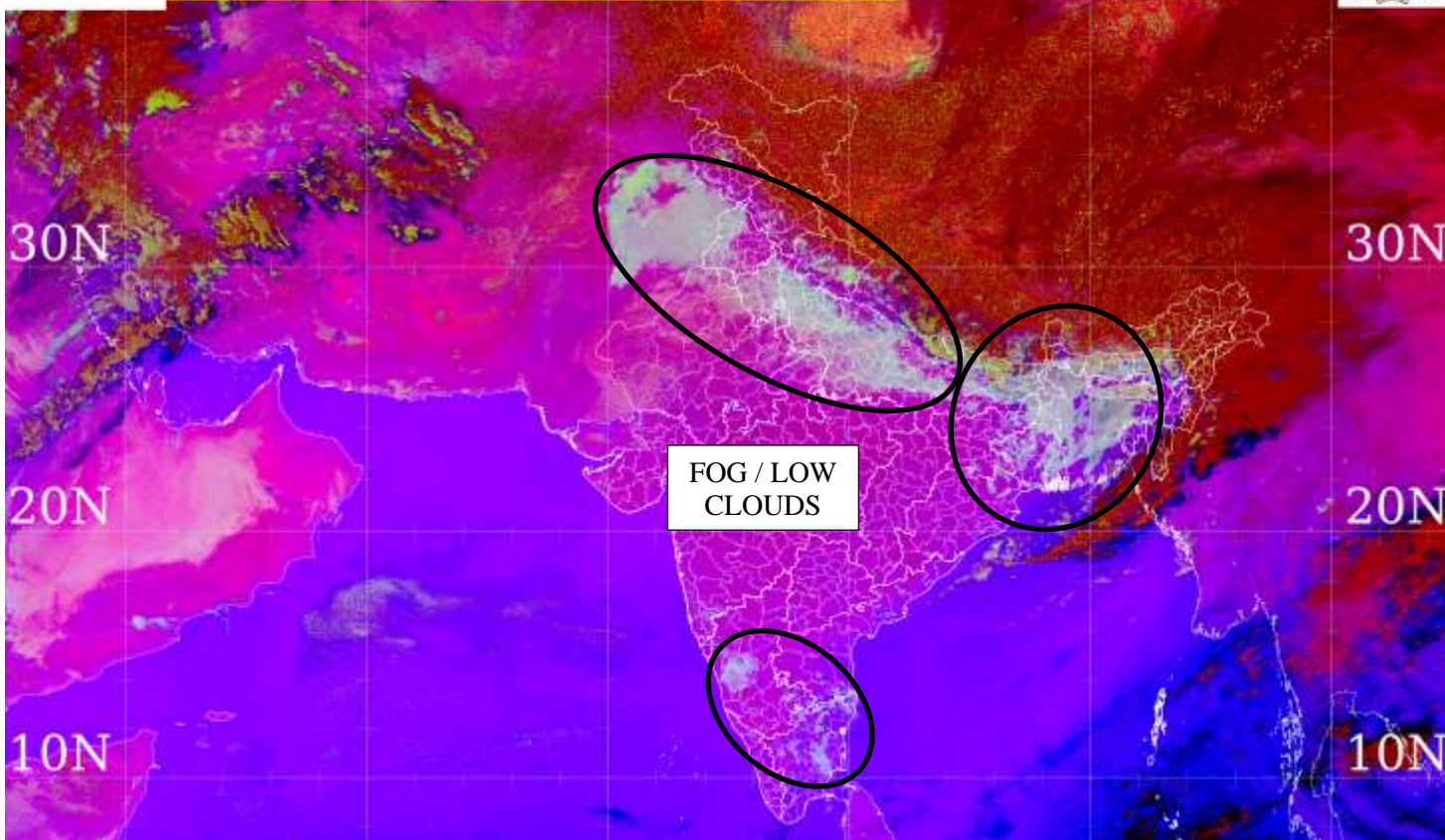
SCT MULTILAYERED CLOUDS OVER CASPIAN SEA IRAN W AFGAN AND N/HOOD IN ASSW **ANOTHER WD** OVER THE AREA (.)

**FOG / LOW CLOUDS:-**

METEOSAT-8 RGB NIGHT FOG PRODUCT AT 0030 UTC INDICATES SCT TO BKN FOG / LOW CLOUDS OVER NE PAK PJB HARY DLH EXT N RAJ EXT NW MP UP BHR E JHRKND NE ORS GWB SHWB BD W ASSAM MEGHA W TRP NW & SE SIK S RYLSM AND N TN (.)



60E 70E 80E 90E 100E  
 MSG-1: SEVIRI [night\_fog]  
 20220205\_0030UTC



**CLOUDS DESCRIPTION WITHIN INDIA:-**

**NORTH:-**

SCT LOW/MED CLOUDS WITH EMBDD ISOL MOD TO INT CONVTN OVER LADAKH N HP AND ISOL WK TO MOD CONVTN OVER J&K N UTRKND EXT NE UP (.) SCT LOW/MED CLOUDS WITH EMBDD ISOL WK CONVTN OVER S HP S UTRKND (.)

**EAST:-**

SCT TO BKN LOW/MED CLOUDS WITH EMBDD MOD TO INT CONVTN OVER ARUPR E ASSAM NAGA (.) SCT LOW/MED CLOUDS WITH EMBDD WK TO MOD CONVTN OVER N & SE BHR N SHWB SKM REST ASSAM MANI MIZO (.) ISOL TO SCT LOW/MED CLOUDS OVER NE JHRKND S SHWB MEGHA TRP (.)

**WEST:-**

NO SIGNIFICANT CLOUDS OVER THE REGION (.)

**SOUTH:-**

SCT LOW/MED CLOUDS WITH EMBDD ISOL WK CONVTN OVER NICOBAR ILS (.) SCT LOW/MED CLOUDS OVER KER TN ANDAMAN ILS (.)

**ARABIAN SEA:-**

SCT LOW/MED CLOUDS WITH EMBDD ISOL WK CONVTN OVER EXT SW ARSEA (.) SCT LOW/MED CLOUDS OVER CENTRAL ARSEA REST SOUTH ARSEA AND COMORIN (.)

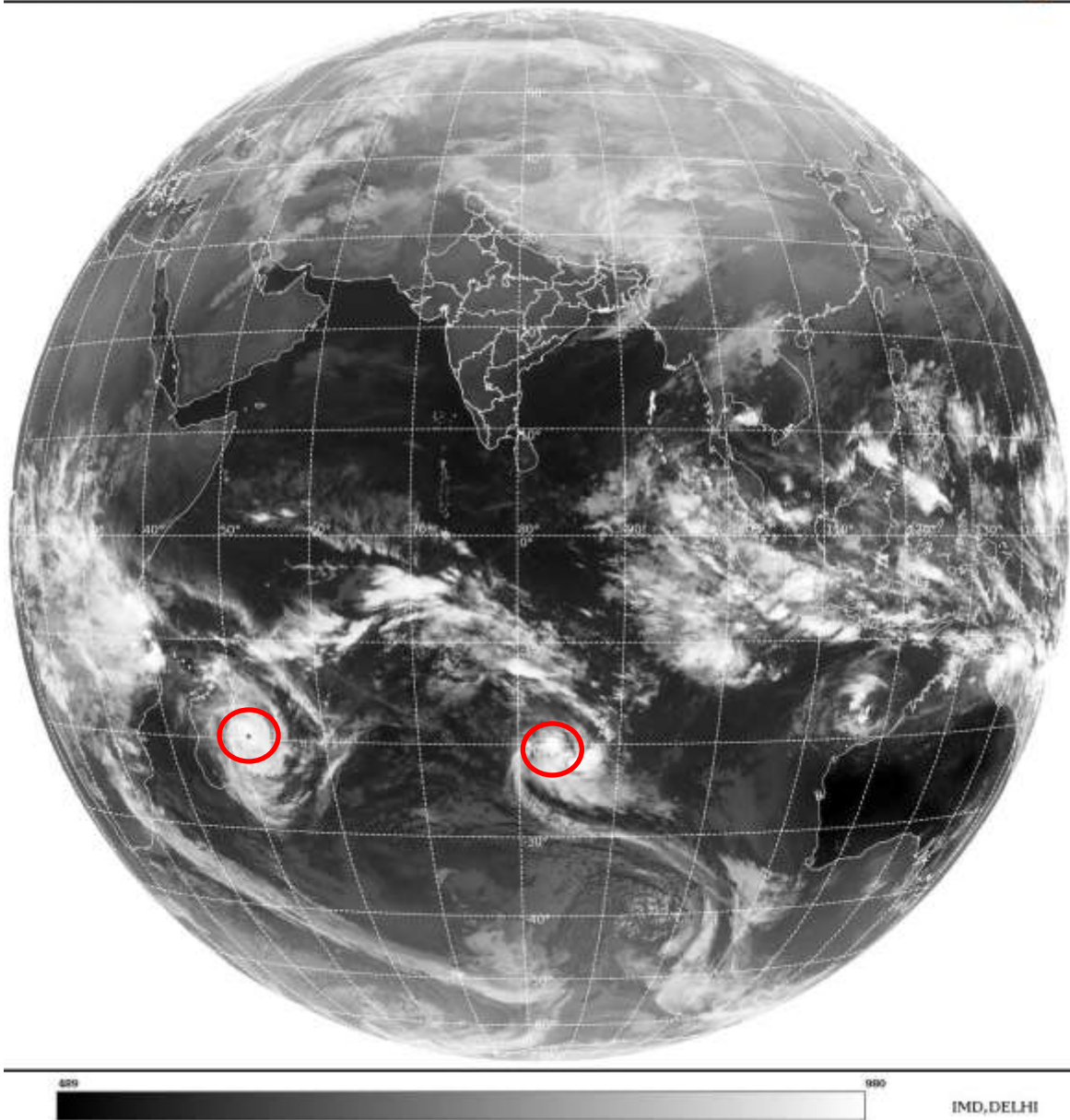
**BAY OF BENGAL & ANDAMAN SEA:-**

SCT LOW/MED CLOUDS WITH EMBDD MOD TO INT CONVTN OVER SE BAY S ANDAMAN SEA AND WK TO MOD CONVTN OVER NORTH BAY N ANDAMAN SEA (.) ISOL TO SCT LOW/MED CLOUDS OVER REST BAY (.)

**CLOUDS DESCRIPTION OUTSIDE INDIA:-**

SAT : INSAT-3D IMG  
Thermal Infrared1 Count 10.8 um  
L1B FULL DISK

05-02-2022/(0000 to 0026) GMT  
05-02-2022/(0530 to 0556) IST



**VORTEX (BATSIRAI) OVER SOUTH INDIAN OCEAN:-**

VORTEX (**BATSIRAI**) OVER SOUTH INDIAN OCEAN CENTERED NEAR **19.9S / 51.3E** (.) INTENSITY **T5.5/6.0** (.) ASSTD BKN LOW/MED CLOUDS WITH EMBDD INT TO V INT CONVTN OVER AREA BET LAT 16.0S TO 24.0S LONG 49.0E TO 56.0E (.)

**ANOTHER VORTEX (CLIFF) OVER SOUTH INDIAN OCEAN:-**

ANOTHER VORTEX (**CLIFF**) OVER SOUTH INDIAN OCEAN CENTERED NEAR **19.4S / 83.7E** (.) INTENSITY **T2.5/3.0** (.) ASSTD BKN LOW/MED CLOUDS WITH EMBDD INT TO V INT CONVTN OVER AREA BET LAT 18.0N TO 24.0N LONG 80.0E TO 88.5E (.)

SCT LOW/MED CLOUDS WITH EMBDD MOD TO INT CONVTN OVER NEPAL BHUTAN TIBET CHINA N MYANMAR THAILAND W CAMBODIA GULF OF THAILAND LAOS N VIETNAM SUMATRA STR OF MALACCA MALASIYA BORNEO SOUTH CHINA SEA JAVA ILS & SEA CELEBES ILS & SEA PHILIPPINES SULU SEA MADAGASCAR N MOZAMBIQUE CHANNEL AND OVER INDIAN OCEAN BET LAT 5.0N TO 14.0S EAST OF LONG 40.0E AND BET LAT 14.0S TO 30.0S LONG 50.0E TO 95.0E (.)

TOO 05/0645 HRS IST=

NNNN

**LEGEND:-**

|        |       |  |
|--------|-------|--|
| REGION | NORTH | J&K HP PJB HARY DLH UP UTRKND                        |
|        | EAST  | BHR JHRKND CHTGH ORS WB SKM<br>NORTH- EAST STATES    |
|        | WEST  | RAJ MP GUJ MAHA GOA                                  |
|        | SOUTH | TLNGN AP KRNTK KER TN LKSDP<br>ANDAMAN & NICOBAR ILS |

|  |              |   |
|--|--------------|---|
| CLOUD DISTRIBUTION                                       | ISOL         | ISOLATED (LESS THAN 25%)                            |
|  | SCT          | SCATTERED (25 TO 50%)                               |
|  | BKN          | BROKEN (51 TO 75%)                                  |
|  | SLD          | SOLID (GREATER THAN 75%)                            |
| CLOUDS TOP TEMPERATURE                                   | CTT          | CLOUD TOP TEMPERATURE                               |
| CONVECTION   | WK CONVTN    | WEAK CONVECTION<br>(CTT GREATER THAN -25°C)         |
|  | MOD CONVTN   | MODERATE CONVECTION<br>(CTT BETWEEN -25°C TO -40°C) |
|  | INT CONVTN   | INTENSE CONVECTION<br>(CTT BETWEEN -41°C TO -70°C)  |
|  | V INT CONVTN | VERY INTENSE CONVECTION<br>(CTT LESS THAN -70°C)    |
| METEOROLOGICAL SUB-DIVISIONS, STATES & UNION TERRITORIES | ARUPR        | ARUNACHAL PRADESH                                   |
|  | BHR          | BIHAR   |
|  | CHTGH        | CHHATTISGARH  |
|  | COTL AP      | COASTAL ANDHRA PRADESH                              |
|  | COTL KRNTK   | COASTAL KARNATAKA                                   |
|  | COTL ORS     | COASTAL ORISSA                                      |
|  | GUJ          | GUJARAT   |
|  | GWB          | GANGETIC WEST BENGAL                                |
|  | HARY         | HARYANA   |
|  | DLH          | DELHI   |

|                      |                        |                                     |
|----------------------|------------------------|-------------------------------------|
|                      | <b>HP</b>              | <b>HIMACHAL PRADESH</b>             |
|                      | <b>J&amp;K</b>         | <b>JAMMU AND KASHMIR</b>            |
|                      | <b>JHRKND</b>          | <b>JHARKHAND</b>                    |
|                      | <b>KER</b>             | <b>KERALA</b>                       |
|                      | <b>KKN</b>             | <b>KONKAN</b>                       |
|                      | <b>LKSDP</b>           | <b>LAKSHADWEEP</b>                  |
|                      | <b>M MAHA</b>          | <b>MADHYA MAHARASHTRA</b>           |
|                      | <b>MAHA</b>            | <b>MAHARASHTRA</b>                  |
|                      | <b>MANI</b>            | <b>MANIPUR</b>                      |
|                      | <b>MEGHA</b>           | <b>MEGHALAYA</b>                    |
|                      | <b>MIZO</b>            | <b>MIZORAM</b>                      |
|                      | <b>MP</b>              | <b>MADHYA PRADESH</b>               |
|                      | <b>MRTHWD</b>          | <b>MARATHWADA</b>                   |
|                      | <b>NAGA</b>            | <b>NAGALAND</b>                     |
|                      | <b>N COTL AP</b>       | <b>NORTH COASTAL ANDHRA PRADESH</b> |
|                      | <b>NIK</b>             | <b>NORTH INTERIOR KARNATAKA</b>     |
|                      | <b>ORS</b>             | <b>ORISSA</b>                       |
|                      | <b>PJB</b>             | <b>PUNJAB</b>                       |
|                      | <b>RAJ</b>             | <b>RAJASTHAN</b>                    |
|                      | <b>RYLSM</b>           | <b>RAYALASEEMA</b>                  |
|                      | <b>SAU &amp; KUTCH</b> | <b>SAURASHTRA &amp; KUTCH</b>       |
|                      | <b>SHWB</b>            | <b>SUB-HIMALAYAN WEST BENGAL</b>    |
|                      | <b>SIK</b>             | <b>SOUTH INTERIOR KARNATAKA</b>     |
|                      | <b>SKM</b>             | <b>SIKKIM</b>                       |
|                      | <b>TLNGN</b>           | <b>TELANGANA</b>                    |
|                      | <b>TN</b>              | <b>TAMIL NADU</b>                   |
|                      | <b>TRP</b>             | <b>TRIPURA</b>                      |
|                      | <b>UP</b>              | <b>UTTAR PRADESH</b>                |
|                      | <b>UTRKN</b>           | <b>UTTARAKHAND</b>                  |
|                      | <b>VID</b>             | <b>VIDHARBHA</b>                    |
|                      | <b>SHWB</b>            | <b>SUB HIMALAYAN WEST BENGAL</b>    |
|                      | <b>GWB</b>             | <b>GANGETIC WEST BENGAL</b>         |
|                      | <b>ARSEA</b>           | <b>ARABIAN SEA</b>                  |
|                      | <b>ILS</b>             | <b>ISLANDS</b>                      |
| <b>MISCELLANEOUS</b> | <b>ASSW</b>            | <b>IN ASSOCIATION WITH</b>          |
|                      | <b>ASSTD</b>           | <b>ASSOCIATED</b>                   |
|                      | <b>LLC</b>             | <b>LOW LEVEL CIRCULATION</b>        |
|                      | <b>EMBDD</b>           | <b>EMBEDDED</b>                     |
|                      | <b>N/HOOD</b>          | <b>NEIGHBOURHOOD</b>                |
|                      | <b>EXT</b>             | <b>EXTREME</b>                      |