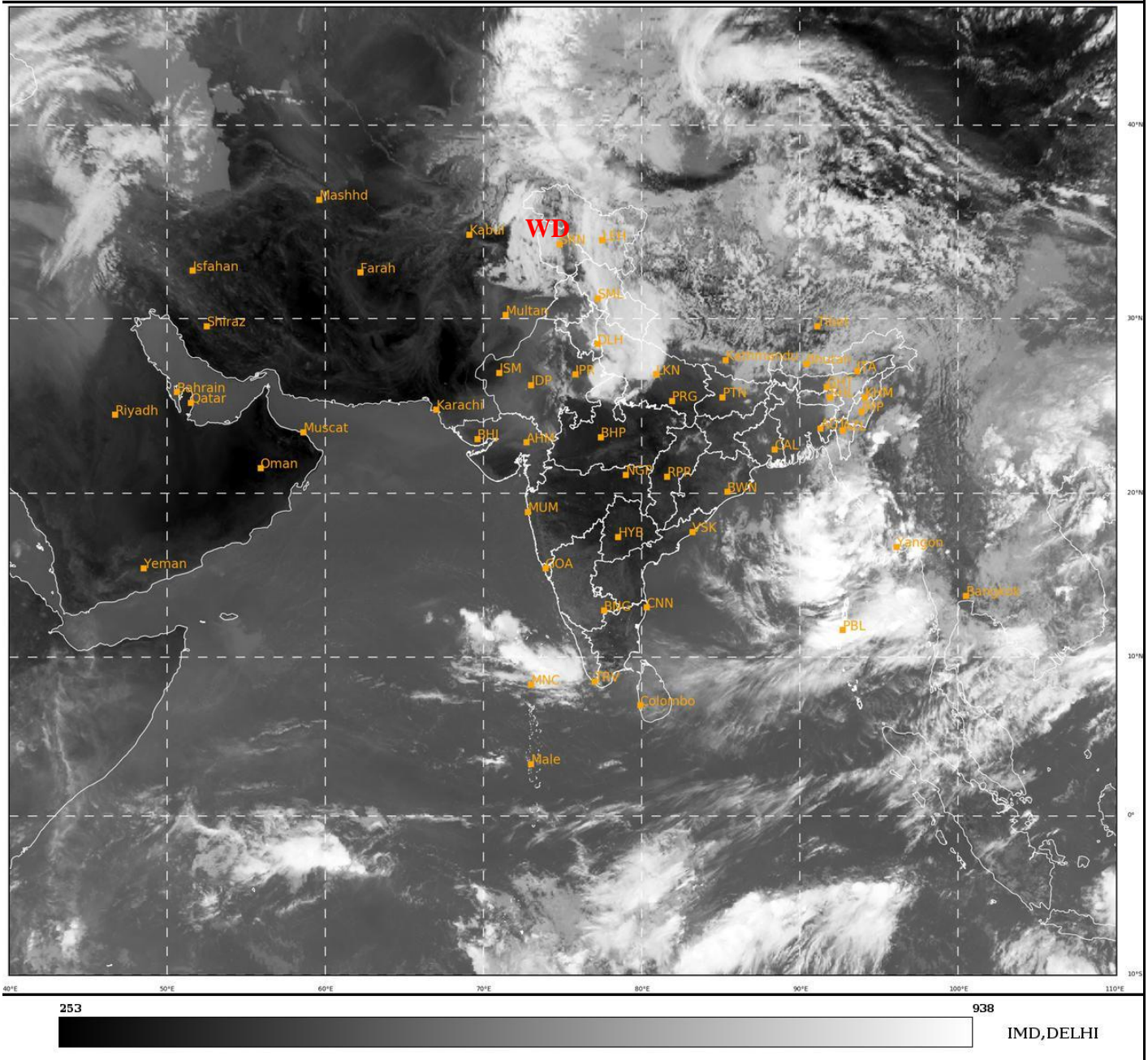




**SATELLITE BULLETIN BASED ON SATELLITE
IMAGERIES AND PRODUCTS**
23.05.2022 TIME 0600 UTC

SAT : INSAT-3D IMG
IMG_TIR1 10.8 um
LIC Mercator

23-05-2022/(0600 to 0627) GMT
23-05-2022/(1130 to 1157) IST



TCIN50 DEMS 230600

SATELLITE BULLETIN BASED ON INSAT-3D PIC OF 230600 UTC (.)

REGION COVERED BETWEEN LAT 50.0°N TO 30.0°S AND LONG 40.0°E TO 125.0°E (.)

SALIENT FEATURES:-

WESTERN DISTURBANCE (WD):-

SCT TO BKN MULTILAYERED CLOUDS OVER N PAK LADAKH J&K HP UTRKND PJB HARY DLH W UP N RAJ AND N/HOOD IN ASSW **WD** OVER THE AREA (.)

THUNDERSTORM / CONVECTIVE ACTIVITY:-

THUNDERSTORM / CONVECTIVE ACTIVITIES OBSERVED OVER LADAKH J&K HP UTRKND PJB HARY DLH W UP N NE RAJ LKSDP ILS AREA ANDAMAN ILS (.)

DUST:-

METEOSAT-8 RGB DUST PRODUCT AT 0600 UTC INDICATES DUST OVER RAJ NC GUJ PAK AND NORTH ARABIAN SEA PERSISTS (.)

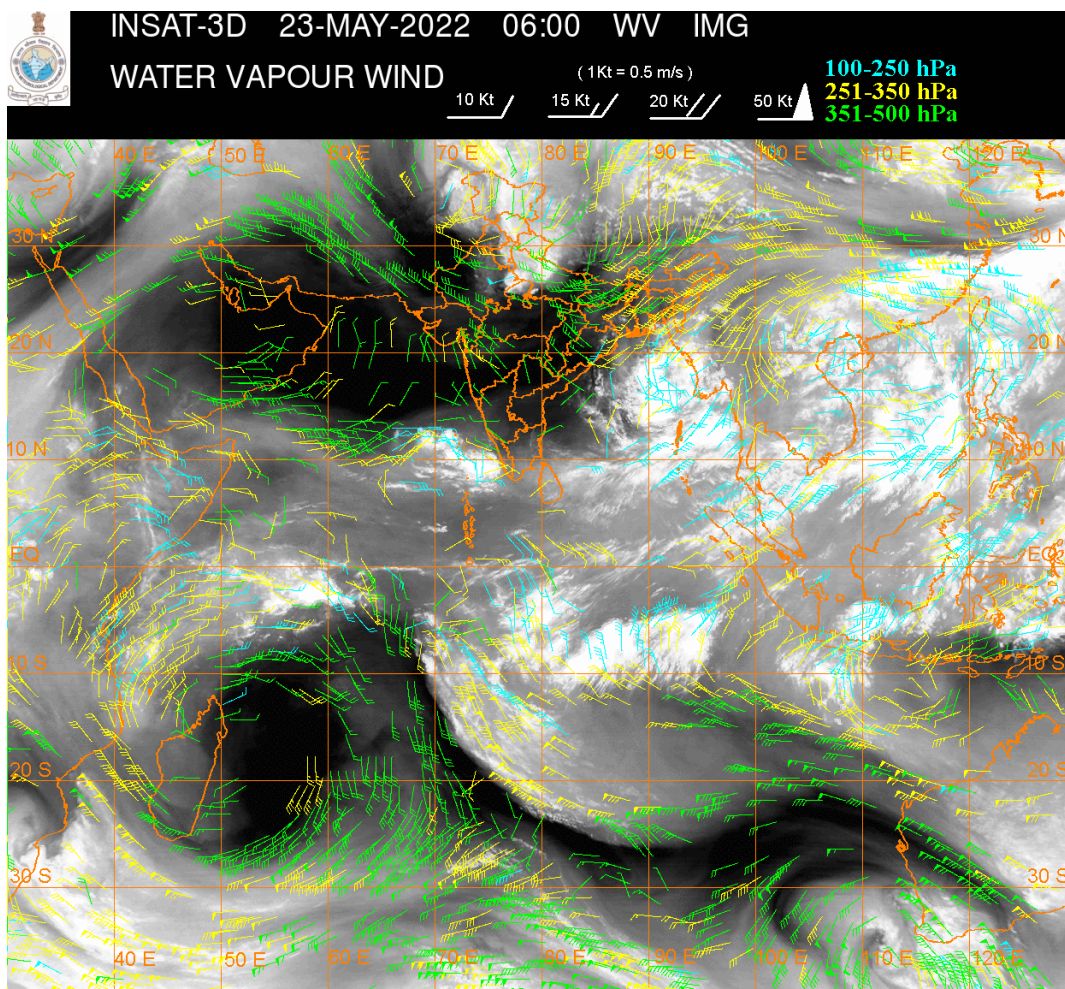
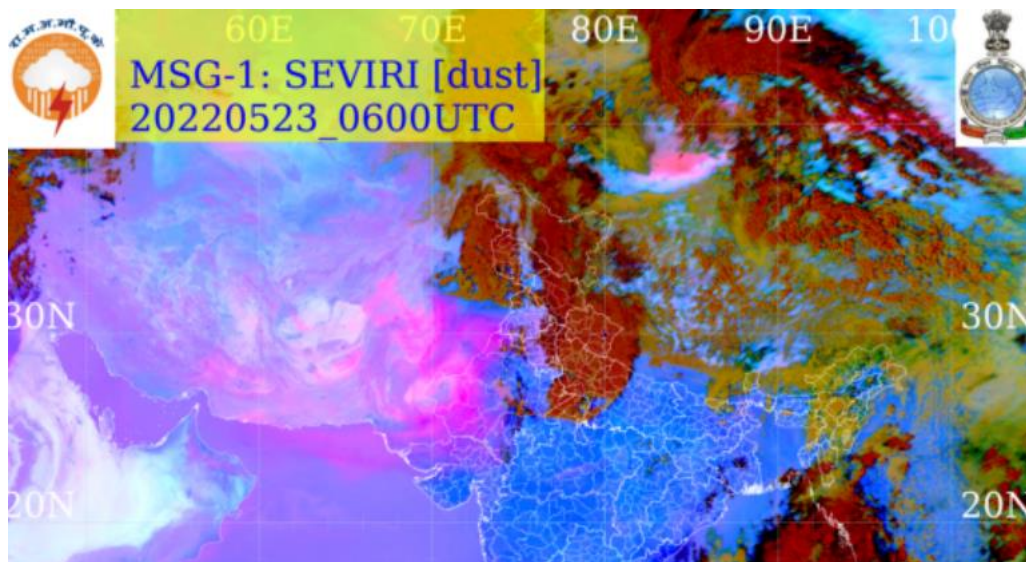
PRECIPITATION NOWCASTING:-

(BASED ON SCOPE NOWCASTING TOOL AT 0500 UTC AT A LEAD TIME OF 03 HRS (MM/HR):-

RAINFALL UPTO 10-15 MM LIKELY OVER LKSDP ILS AREA (.)

RAINFALL UPTO 5-10 MM LIKELY OVER ANDAMAN ILS (.)

**RAINFALL UPTO 0.5-5 MM LIKELY OVER EXT S HP SW UTRKND ADJ N UP EXT N PJB C DLH
EXT NW UP S TRP (.)**



CLOUDS DESCRIPTION WITHIN INDIA:-

NORTH:-

SCT TO BKN LOW/MED CLOUDS WITH EMBDD MOD TO INT CONVTN OVER LADAKH J&K HP UTRKND W UP AND WK TO MOD CONVTN OVER N PJB N HARY DLH (.) ISOL LOW/MED CLOUDS OVER S PJB (.)

EAST:-

SCT LOW/MED CLOUDS WITH EMBDD WK TO MOD CONVTN OVER NE BHR N SHWB SKM & NE STATES (.) ISOL TO SCT LOW/MED CLOUDS OVER N CHTGH N ORS N JHRKND GWB S SHWB (.)

WEST:-

SCT LOW/MED CLOUDS WITH EMBDD WK TO MOD CONVTN OVER NE RAJ EXT NE MP (.) SCT LOW/MED CLOUDS OVER SE RAJ E MP GUJ MADHYA MAHA KKN GOA (.)

SOUTH:-

SCT LOW/MED CLOUDS WITH EMBDD MOD TO INT CONVTN OVER LKSDP & ANDAMAN ILS (.)
SCT LOW/MED CLOUDS WITH EMBDD WK CONVTN OVER S KER S TN (.) SCT LOW/MED
CLOUDS OVER KRNTK RYLSM N KER W TN NICOBAR ILS (.)

ARABIAN SEA:-

SCT LOW/MED CLOUDS WITH EMBDD INT TO V INT CONVTN OVER SE ADJ EC ARSEA BET
LAT 7.0 TO 13.5N AND EAST OF LONG 68.0E (.)

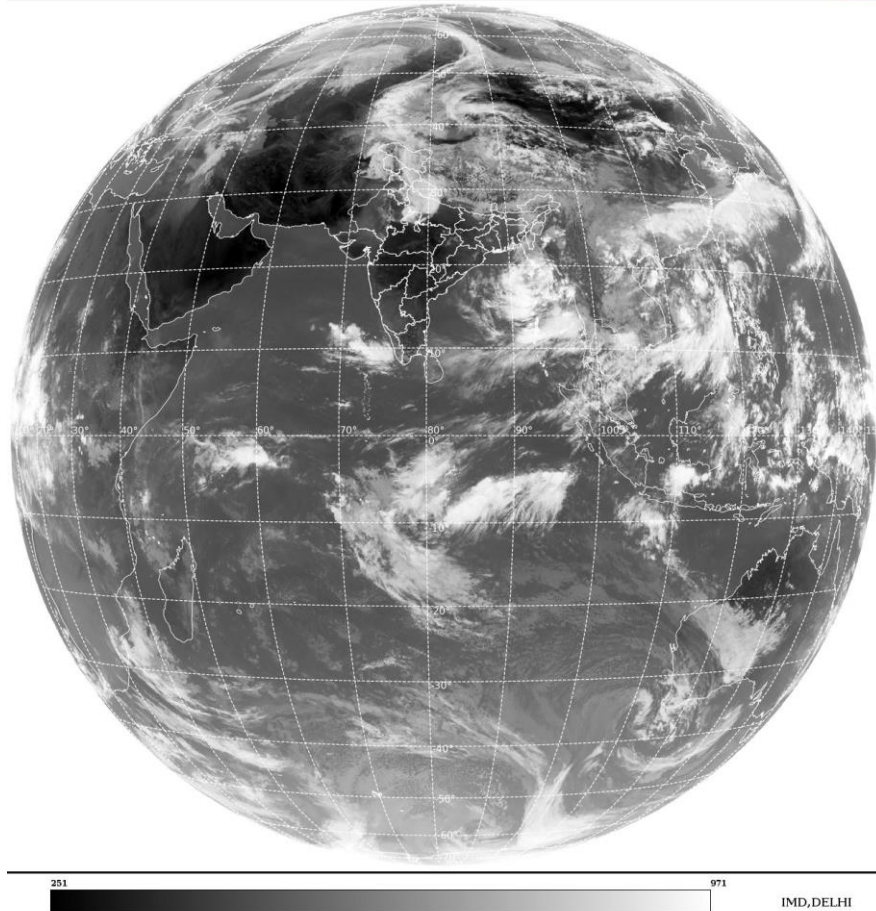
BAY OF BENGAL & ANDAMAN SEA:-

SCT TO BKN LOW/MED CLOUDS WITH EMBDD INT TO V INT CONVTN OVER NE ADJ EC BAY
NORTH ANDAMAN SEA ADJ SE BAY AND TENASSERIM COAST AND GULF OF MARTABAN (.)
SCT LOW/MED CLOUDS WITH EMBDD MOD TO INT CONVTN OVER WC BAY (.)

CLOUDS DESCRIPTION OUTSIDE INDIA:-

SAT : INSAT-3D IMG
Thermal Infrared1 Count 10.8 um
LIB FULL DISK

23-05-2022/(0600 to 0627) GMT
23-05-2022/(1130 to 1157) IST



SCT LOW/MED CLOUDS WITH EMBDD MOD TO INT CONVTN OVER N PAK NEPAL BHUTAN
TIBET CHINA YELLOW SEA E CHINA SEA TAIWAN MYANMAR THAILAND GULF OF
THAILAND CAMBODIA LAOS VIETNAM GULF OF TONKIN HAINAN SUMATRA ADJ WEST
COAST STR OF MALACCA MALAYSIA BORNEO SOUTH CHINA SEA JAVA ILS & SEA CELEBES
ILS & SEA PHILIPPINES SULU SEA AND OVER INDIAN OCEAN BET EQT TO 10.0S LONG 50.0E
TO 112.0E AND BET LAT 10.0S TO 23.0S LONG 70.0E TO 88.0E (.)

TOO 23/1230 HRS IST=

NNNN

LEGEND:-

REGION	NORTH	J&K HP PJB HARY DLH UP UTRKND
	EAST	BHR JHRKND CHTGH OR WB SKM NORTH- EAST STATES
	WEST	RAJ MP GUJ MAHA GOA

	SOUTH	TLNGN AP KRNTK KER TN LKSDP ANDAMAN & NICOBAR ILS
--	--------------	--

CLOUD DISTRIBUTION	ISOL	ISOLATED (LESS THAN 25%)	
	SCT	SCATTERED (25 TO 50%)	
	BKN	BROKEN (51 TO 75%)	
	SLD	SOLID (GREATER THAN 75%)	
CLOUDS TOP TEMPERATURE	CTT	CLOUD TOP TEMPERATURE	
CONVECTION	WK CONVTN	WEAK CONVECTION (CTT GREATER THAN -25°C)	
	MOD CONVTN	MODERATE CONVECTION (CTT BETWEEN -25°C TO -40°C)	
	INT CONVTN	INTENSE CONVECTION (CTT BETWEEN -41°C TO -70°C)	
	V INT CONVTN	VERY INTENSE CONVECTION (CTT LESS THAN -70°C)	
METEOROLOGICAL SUB-DIVISIONS, STATES & UNION TERRITORIES	ARUPR	ARUNACHAL PRADESH	
	BHR	BIHAR	
	CHTGH	CHHATTISGARH	
	COTL AP	COASTAL ANDHRA PRADESH	
	COTL KRNTK	COASTAL KARNATAKA	
	COTL ORS	COASTAL ORISSA	
	GUJ	GUJARAT	
	GWB	GANGETIC WEST BENGAL	
	HARY	HARYANA	
	DLH	DELHI	
	HP	HIMACHAL PRADESH	
	J&K	JAMMU AND KASHMIR	
	JHRKND	JHARKHAND	
	KER	KERALA	
	KKN	KONKAN	
	LKSDP	LAKSHADWEEP	
	M MAHA	MADHYA MAHARASHTRA	
	MAHA	MAHARASHTRA	
	MANI	MANIPUR	
	MEGHA	MEGHALAYA	
	MIZO	MIZORAM	
	MP	MADHYA PRADESH	
		MRTHWD	MARATHWADA
		NAGA	NAGALAND
N COTL AP		NORTH COASTAL ANDHRA PRADESH	
NIK		NORTH INTERIOR KARNATAKA	
ORS		ORISSA	
PJB		PUNJAB	
RAJ		RAJASTHAN	
RYLSM		RAYALASEEMA	
SAU & KUTCH		SAURASHTRA & KUTCH	
SHWB		SUB-HIMALAYAN WEST BENGAL	

	SIK	SOUTH INTERIOR KARNATAKA
	SKM	SIKKIM
	TLNGN	TELANGANA
	TN	TAMIL NADU
	TRP	TRIPURA
	UP	UTTAR PRADESH
	UTRKND	UTTARAKHAND
	VID	VIDHARBHA
	SHWB	SUB HIMALAYAN WEST BENGAL
	GWB	GANGETIC WEST BENGAL
	ARSEA	ARABIAN SEA
	ILS	ISLANDS
MISCELLANEOUS	ASSW	IN ASSOCIATION WITH
	ASSTD	ASSOCIATED
	LLC	LOW LEVEL CIRCULATION
	EMBDD	EMBEDDED
	N/HOOD	NEIGHBOURHOOD
	EXT	EXTREME