



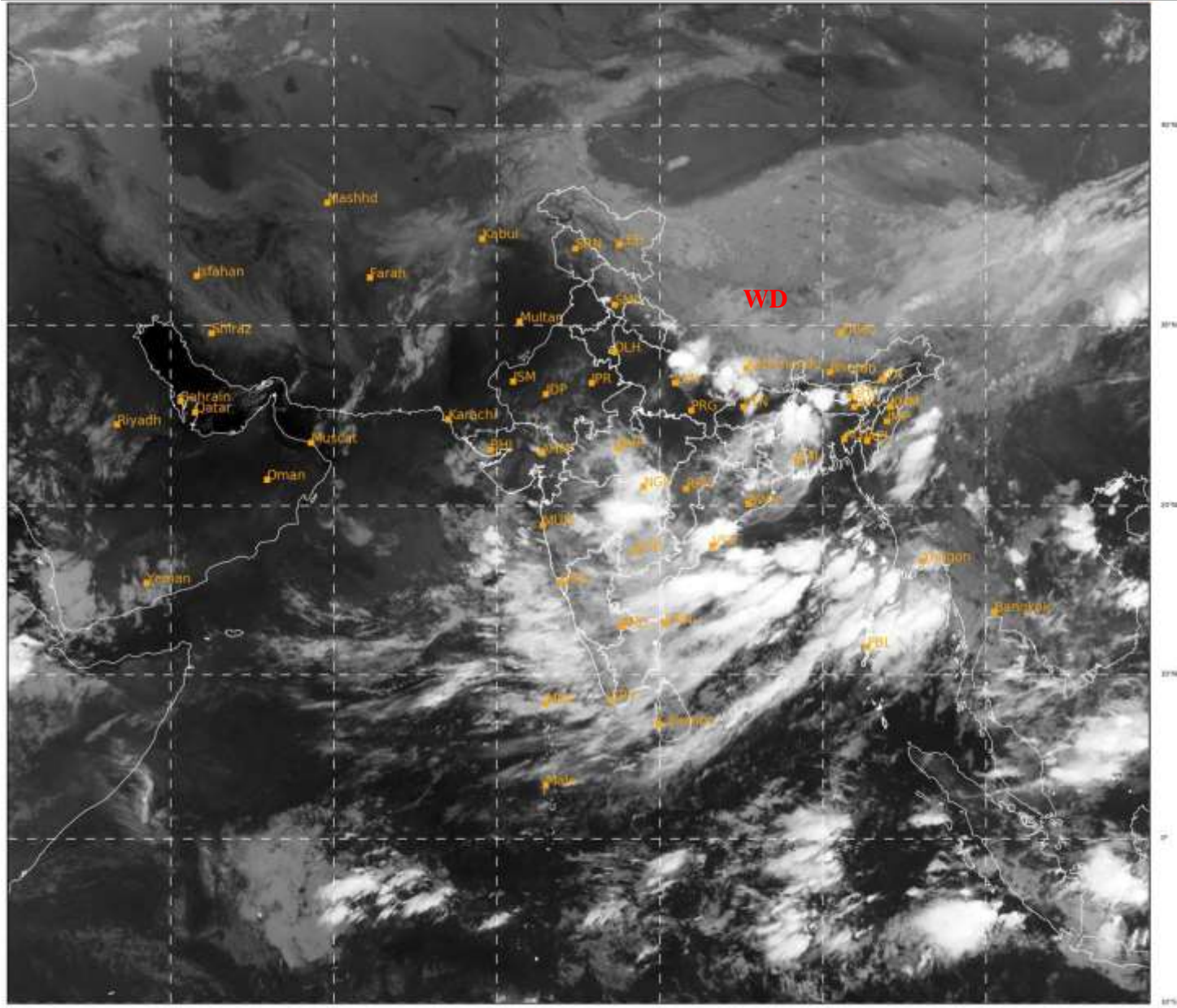
भारत मौसम विज्ञान विभाग
पृथ्वी विज्ञान मंत्रालय
India Meteorological Department
Ministry of Earth Sciences



SATELLITE BULLETIN BASED ON SATELLITE
IMAGERIES AND PRODUCTS
06.09.2021 TIME 0000 UTC

SAT : INSAT-3D IMG
IMG_TIR1 10.8 um
LIC Mercator

06-09-2021/(0000 to 0026) GMT
06-09-2021/(0530 to 0556) IST



481

949

IMD, DELHI

TCIN50 DEMS 060000

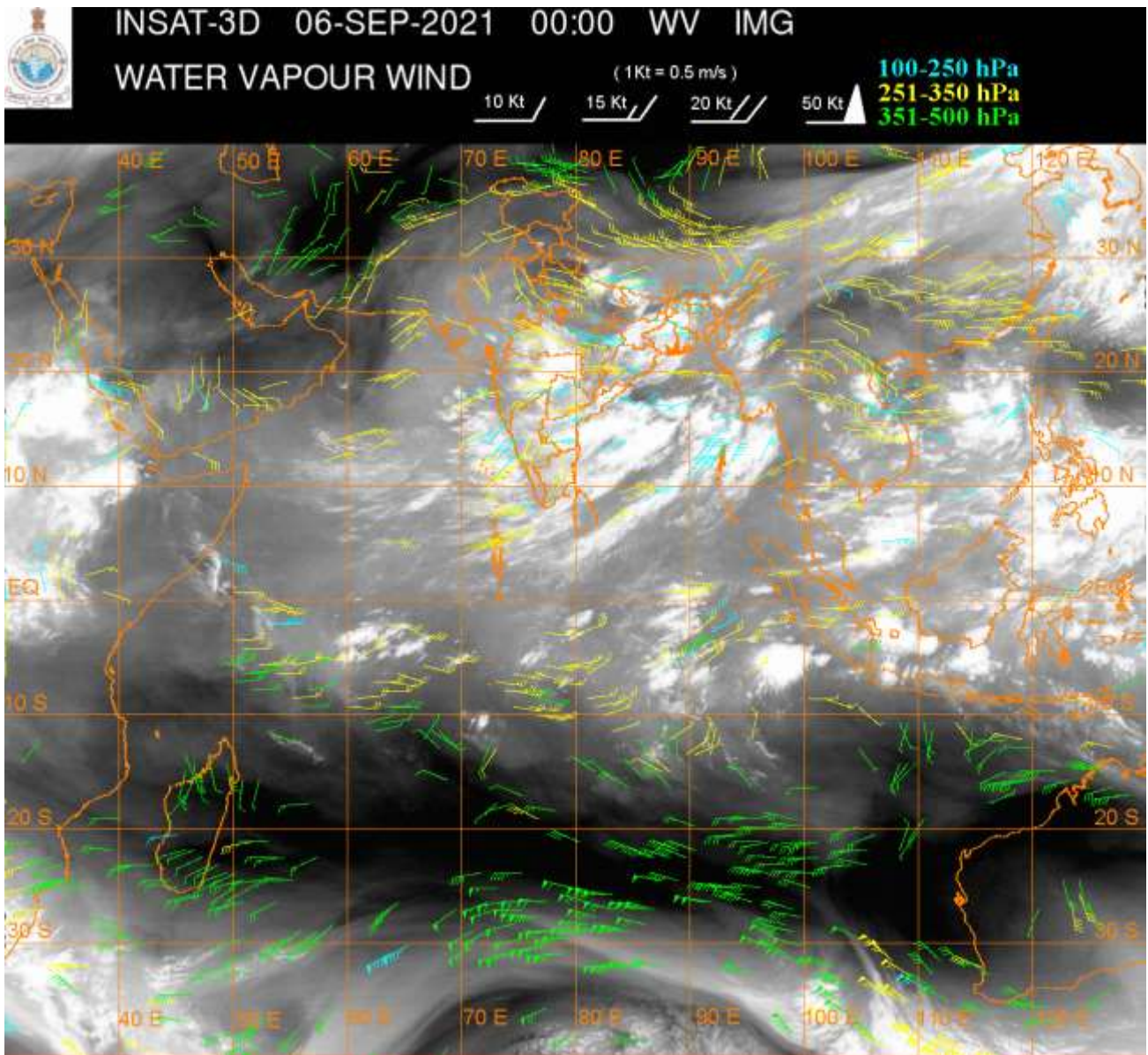
SATELLITE BULLETIN BASED ON INSAT-3D PIC OF 060000 UTC (.)

REGION COVERED BETWEEN LAT 50.0°N TO 30.0°S AND LONG 40.0°E TO 125.0°E (.)

SALIENT FEATURES:-

WESTERN DISTURBANCE (WD):-

SCT MULTILAYERED CLOUDS OVER TIBET ADJ CHINA IN ASSW **WD** OVER THE AREA (.)



CLOUDS DESCRIPTION WITHIN INDIA:-

NORTH:-

SCT LOW/MED CLOUDS WITH EMBDD ISOL INT TO V INT CONVTN OVER NE UP AND MOD TO INT CONVTN OVER SW HP NE UTRKND (.)SCT LOW/MED CLOUDS WITH EMBDD WK CONVTN OVER E LADAKH (.)ISOL TO SCT LOW/MED CLOUDS OVER REST LADAKH N HP NW UTRKND S UP (.)

EAST:-

SCT LOW/MED CLOUDS WITH EMBDD INT TO V INT CONVTN OVER EXT S ORS NW BHR EXT N GWB S SHWB & W ASSAM (.) SCT LOW/MED CLOUDS WITH EMBDD MOD TO INT CONVTN OVER N ORS JHRKND SE BHR N SHWB SKM EXT S ARUPR AND ISOL WK TO MOD CONVTN OVER S CHTGH C ORS REST GWB NE ASSAM REST ARUPR (.) ISOL TO SCT LOW/MED CLOUDS OVER REST NE STATES (.)

WEST:-

SCT TO BKN LOW/MED CLOUDS WITH EMBDD INT TO V INT CONVTN OVER EXT PARTS OF VID (.) SCT LOW/MED CLOUDS WITH EMBDD MOD TO INT CONVTN OVER REST VID MRTHWD EXT SE MP AND WK TO MOD CONVTN OVER NE GUJ S RAJ SW MP M MAHA (.)

SOUTH:-

SCT LOW/MED CLOUDS WITH EMBDD INT TO V INT CONVTN OVER N COTL AP (.) SCT LOW/MED CLOUDS WITH EMBDD MOD TO INT CONVTN OVER NE KRNTK N TLNGN S COTL AP LKSDP ANDAMAN ILS AND WK TO MOD CONVTN OVER REST KRNTK S TLNGN RYLSM KER TN & NICOBAR ILS (.)

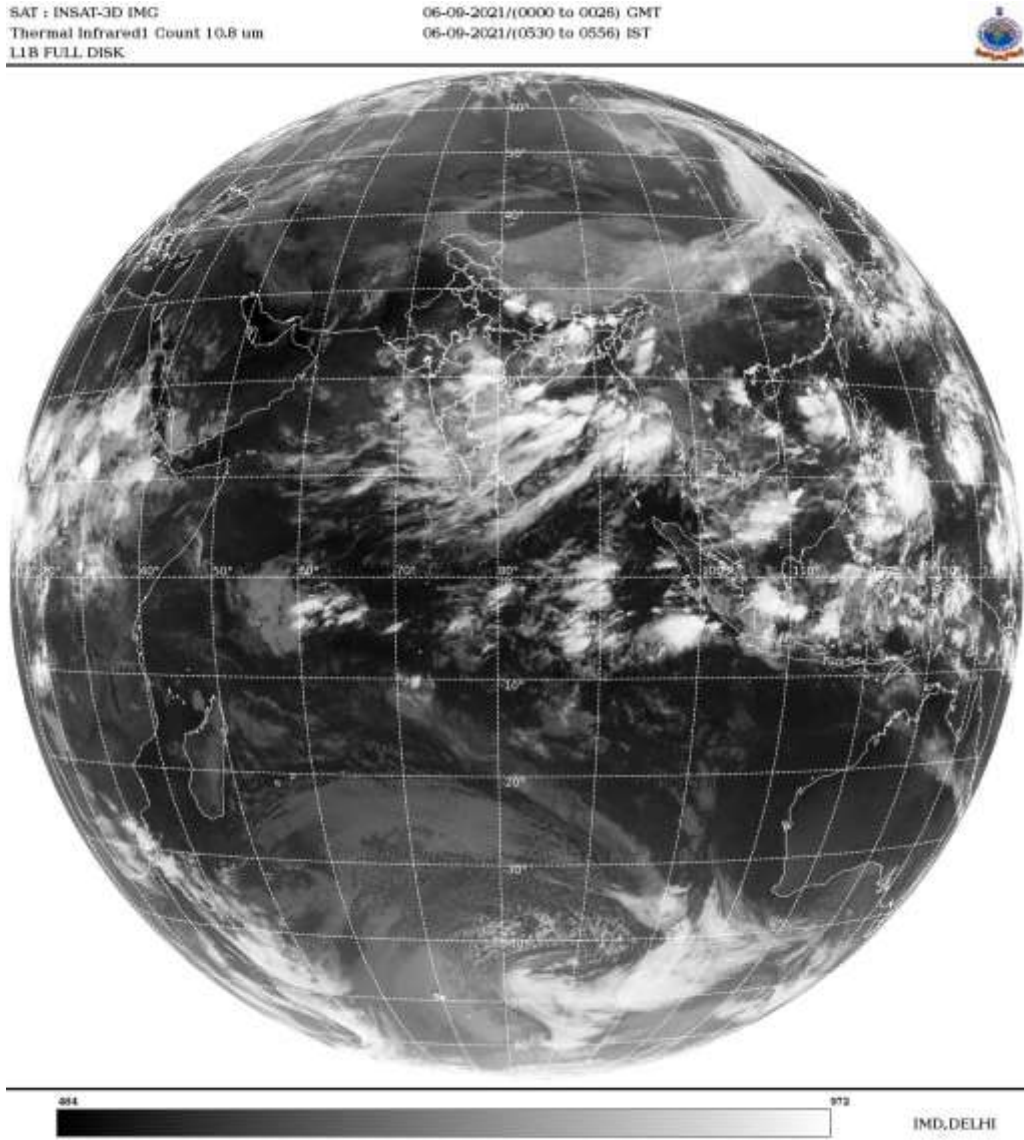
ARABIAN SEA:-

SCT LOW/MED CLOUDS WITH EMBDD MOD TO INT CONVTN OVER EC ADJ SE ARSEA AND COMRIN(.)

BAY OF BENGAL & ANDAMAN SEA:-

SCT TO BKN LOW/MED CLOUDS WITH EMBDD INT TO V INT CONVTN OVER C ADJ S BAY N ANDAMAN SEA (.) SCT LOW/MED CLOUDS WITH EMBDD MOD TO INT CONVTN OVER S BAY & S ANDAMAN SEA (.)

CLOUDS DESCRIPTION OUTSIDE INDIA:-



SCT LOW/MED CLOUDS WITH EMBDD MOD TO INT CONVTN OVER SRILANKA GULF OF MANNAR NEPAL TIBET CHINA YELLOW SEA E CHINA SEA GULF OF TONKIN MYANMAR THAILAND GULF OF THAILAND CAMBODIA LAOS VIETNAM SUMATRA STR OF MALACCA BORNEO S CHINA SEA JAVA ILS & SEA CELEBES ILS & SEA PHILIPPINES SULU SEA AND OVER INDIAN OCEAN BET 5.0N TO LAT 10.0S LONG 59.0E TO 102.0E (.)

TOO 06/0655EF=

NNNN

LEGEND:-

| | | |
|---------------|--------------|--|
| REGION | NORTH | J&K HP PJB HARY DLH UP UTRKND |
| | EAST | BHR JHRKND CHTGH ORS WB SKMNORTH- EAST STATES |
| | WEST | RAJ MP GUJ MAHA GOA |

| | | |
|--|--------------|--|
| | SOUTH | TLNGN AP KRNTK KER TN LKSDP ANDAMAN & NICOBAR ILS |
|--|--------------|--|

| | | | |
|---|------------------------|---|-------------------|
| CLOUD DISTRIBUTION | ISOL | ISOLATED (LESS THAN 25%) | |
| | SCT | SCATTERED (25 TO 50%) | |
| | BKN | BROKEN (51 TO 75%) | |
| | SLD | SOLID (GREATER THAN 75%) | |
| CLOUDS TOP TEMPERATURE | CTT | CLOUD TOP TEMPERATURE | |
| CONVECTION | WK CONVTN | WEAK CONVECTION (CTT GREATER THAN -25°C) | |
| | MOD CONVTN | MODERATE CONVECTION (CTT BETWEEN -25°C TO -40°C) | |
| | INT CONVTN | INTENSE CONVECTION (CTT BETWEEN -41°C TO -70°C) | |
| | V INT CONVTN | VERY INTENSE CONVECTION (CTT LESS THAN -70°C) | |
| METEOROLOGICAL SUB-DIVISIONS, STATES & UNION TERRITORIES | ARUPR | ARUNACHAL PRADESH | |
| | BHR | BIHAR | |
| | CHTGH | CHHATTISGARH | |
| | COTL AP | COASTAL ANDHRA PRADESH | |
| | COTL KRNTK | COASTAL KARNATAKA | |
| | COTL ORS | COASTAL ORISSA | |
| | GUJ | GUJARAT | |
| | GWB | GANGETIC WEST BENGAL | |
| | HARY | HARYANA | |
| | DLH | DELHI | |
| | HP | HIMACHAL PRADESH | |
| | J&K | JAMMU AND KASHMIR | |
| | JHRKND | JHARKHAND | |
| | KER | KERALA | |
| | KKN | KONKAN | |
| | LKSDP | LAKSHADWEEP | |
| | M MAHA | MADHYA MAHARASHTRA | |
| | MAHA | MAHARASHTRA | |
| | MANI | MANIPUR | |
| | MEGHA | MEGHALAYA | |
| | MIZO | MIZORAM | |
| | MP | MADHYA PRADESH | |
| | | MRTHWD | MARATHWADA |
| | | NAGA | NAGALAND |
| N COTL AP | | NORTH COASTAL ANDHRA PRADESH | |
| NIK | | NORTH INTERIOR KARNATAKA | |
| ORS | | ORISSA | |
| PJB | | PUNJAB | |
| RAJ | | RAJASTHAN | |
| RYLSM | | RAYALASEEMA | |
| | SAU & KUTCH | SAURASHTRA & KUTCH | |

| | | |
|----------------------|---------------|----------------------------------|
| | SHWB | SUB-HIMALAYAN WEST BENGAL |
| | SIK | SOUTH INTERIOR KARNATAKA |
| | SKM | SIKKIM |
| | TLNGN | TELANGANA |
| | TN | TAMIL NADU |
| | TRP | TRIPURA |
| | UP | UTTAR PRADESH |
| | UTRKND | UTTARAKHAND |
| | VID | VIDHARBHA |
| | SHWB | SUB HIMALAYAN WEST BENGAL |
| | GWB | GANGETIC WEST BENGAL |
| | ARSEA | ARABIAN SEA |
| | ILS | ISLANDS |
| MISCELLANEOUS | ASSW | IN ASSOCIATION WITH |
| | ASSTD | ASSOCIATED |
| | LLC | LOW LEVEL CIRCULATION |
| | EMBDD | EMBEDDED |
| | N/HOOD | NEIGHBOURHOOD |
| | EXT | EXTREME |