



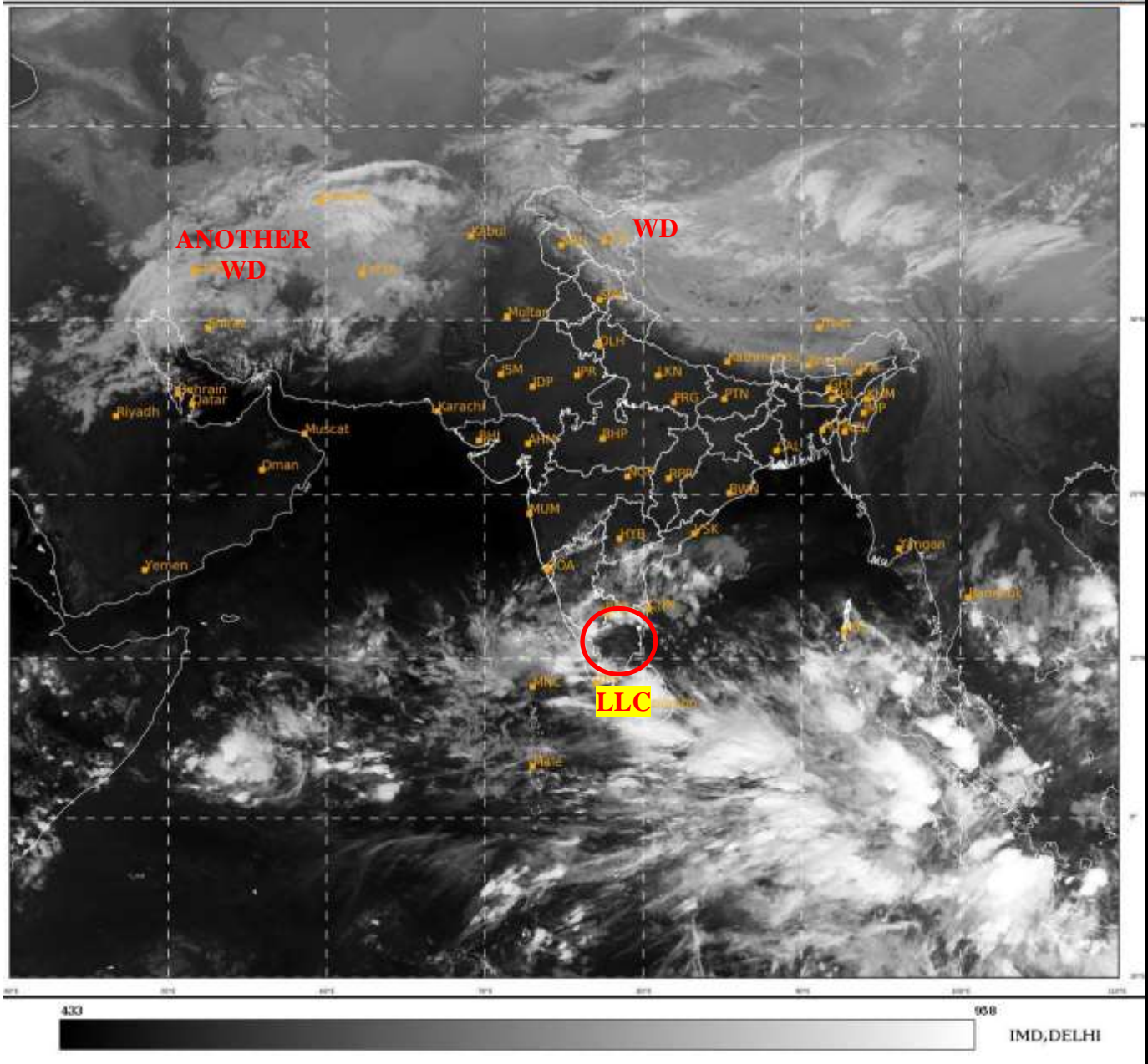
भारत मौसम विज्ञान विभाग
पृथ्वी विज्ञान मंत्रालय
India Meteorological Department
Ministry of Earth Sciences



**SATELLITE BULLETIN BASED ON SATELLITE
IMAGERIES AND PRODUCTS
12.11.2022 TIME 1500 UTC**

SAT : INSAT-3DR IMG
IMG TIR1 10.8 um
LIC Mercator

12-11-2022/(1445 to 1512) GMT
12-11-2022/(2015 to 2042) IST



TCIN50 DEMS 121500

SATELLITE BULLETIN BASED ON INSAT-3D PIC OF 121500 UTC (.)

REGION COVERED BETWEEN LAT 50.0°N TO 35.0°S AND LONG 40.0°E TO 125.0°E (.)

SALIENT FEATURES:-

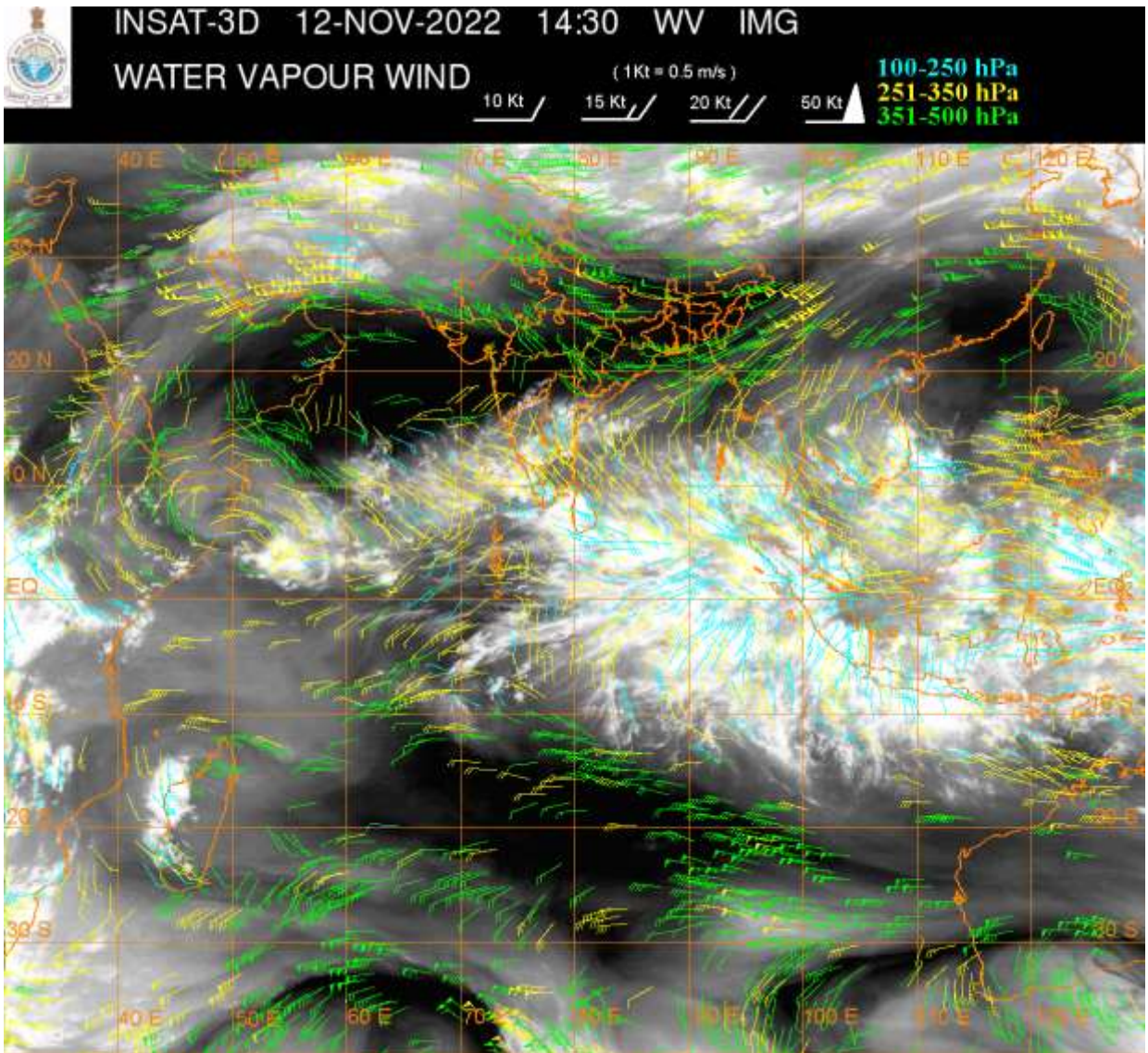
LLC OVER NORTH TAMIL NADU & N/HOOD :-

LOW LEVEL CIRCULATION (LLC) OVER NORTH TN & N/HOOD (.) CENTER POORLY DEFINED IN SATELLITE IMAGERY (.) ASSTD SCT TO BKN LOW/MED CLOUDS WITH EMBDD INT TO V INT CONVTN OVER N TN S COTL AP RYLSM SIK N KER (.) MINIMUM CTT MINUS 75 DEG CELSIUS (.)

WESTERN DISTURBANCE (WD):-

SCT MULTILAYERED CLOUDS OVER LADAKH TIBET ADJ CHINA IN ASSW WD OVER THE AREA (.)

SCT MULTILAYERED CLOUDS OVER S IRAQ IRAN & N/HOOD IN ASSW ANOTHER WD OVER THE AREA (.)



CLOUDS DESCRIPTION WITHIN INDIA:-

NORTH:-

SCT LOW/MED CLOUDS WITH EMBDD MOD TO INT CONVTN OVER EXT NE LADAKH AND ISOL WK TO MOD CONVTN OVER REST LADAKH N J&K N HP N UTRKND (.)

EAST:-

SCT LOW/MED CLOUDS WITH EMBDD WK CONVTN OVER SKM ARUPR (.) SCT LOW/MED CLOUDS OVER S CHTGH ORS N SHWB REST NE STATES (.)

WEST:-

SCT LOW/MED CLOUDS WITH EMBDD WK TO MOD CONVTN OVER S MADHYA MAHA S MRTHWD S KKN GOA (.) SCT LOW/MED CLOUDS NORTH MADHYA MAHA N MRTHWD VID (.)

SOUTH:-

SCT TO BKN LOW/MED CLOUDS WITH EMBDD INT TO V INT CONVTN OVER NE&SW TN NICOBAR ILS (MINIMUM CTT **MINUS 80 DEG CEL**) SOUTH SIK (MINIMUM CTT **MINUS 72 DEG CEL**) (.) SCT TO BKN LOW/MED CLOUDS WITH EMBDD MOD TO INT CONVTN OVER NORTH SIK S RYLSM S COTL AP KER NW TN LKSDP ILS (.) SCT LOW/MED CLOUDS WITH EMBDD WK TO MOD CONVTN OVER REST KRNTK S TLNGN N RYLSM ANDAMAN ILS (.)

ARABIAN SEA:-

SCT TO BKN LOW/MED CLOUDS WITH EMBDD INT TO V INT CONVTN OVER SE ARSEA AND LKSDP ILS AREA COMORIN AREA (.) SCT LOW/MED CLOUDS WITH EMBDD MOD TO INT CONVTN OVER EC ARSEA OFF KRNTK COAST (.)

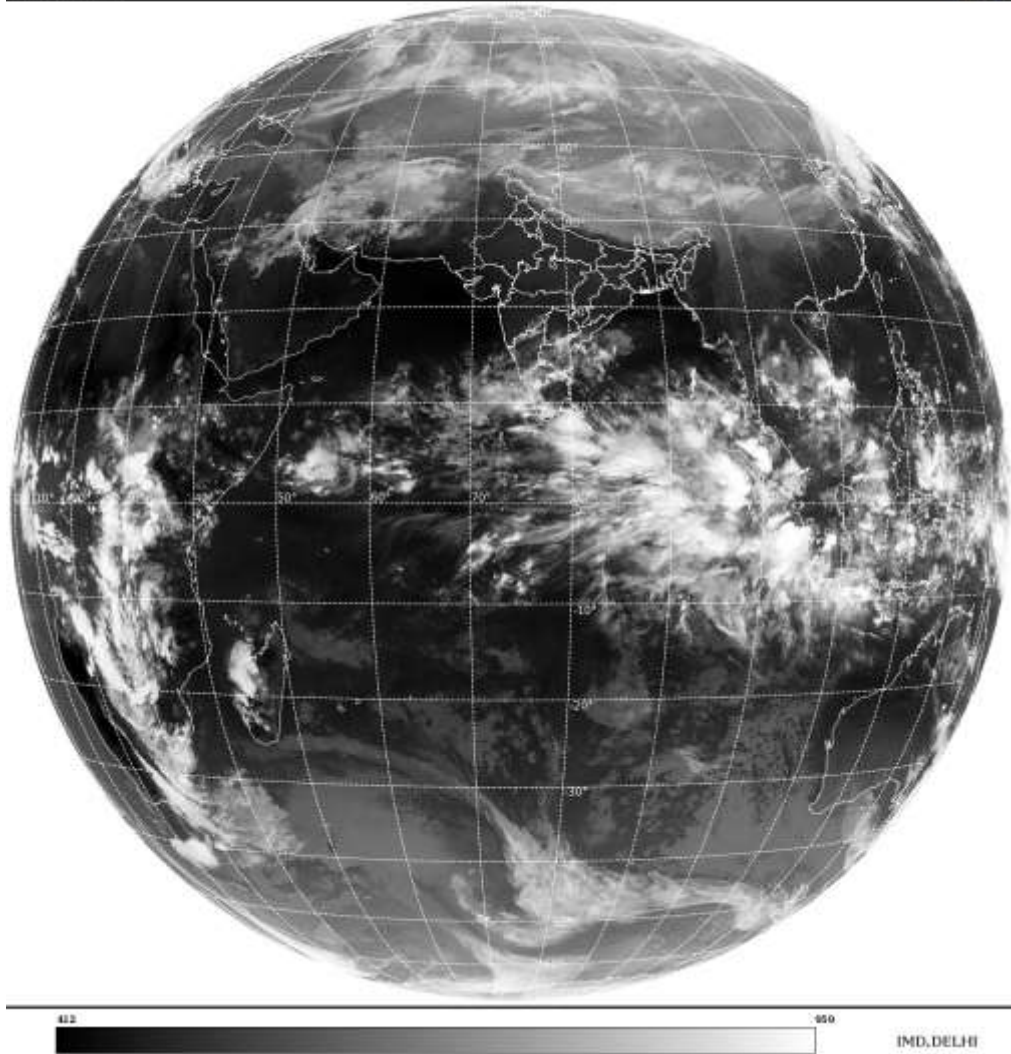
BAY OF BENGAL & ANDAMAN SEA:-

SCT TO BKN LOW/MED CLOUDS WITH EMBDD INT TO V INT CONVTN OVER WC & SOUTH BAY AND SOUTH ANDAMAN SEA (.) SCT LOW/MED CLOUDS WITH EMBDD ISOL WK TO MOD CONVTN OVER EC BAY NORTH ANDAMAN ILS (.)

CLOUDS DESCRIPTION OUTSIDE INDIA:-

SAT : INSAT-3DR IMG
Thermal Infrared1 Count 10.8 um
LIB FULL DISK

12-11-2022/(1445 to 1512) GMT
12-11-2022/(2015 to 2042) IST



SCT LOW/MED CLOUDS WITH EMBDD MOD TO INT CONVTN OVER SRI LANKA MALDIVES TIBET CHINA YELLOW SEA S MYANMAR THAILAND GULF OF THAILAND CAMBODIA S LAOS VIETNAM SUMATRA STR OF MALACCA MALAYSIA BORNEO SOUTH CHINA SEA JAVA ILS & SEA CELEBES ILS & SEA PHILIPPINES SULU SEA AND OVER INDIAN OCEAN BET LAT 5.0N TO 15.0S LONG 65.0E TO 120.0E (.)

TOO 12/2135 HRS IST=

NNNN

LEGEND:-

REGION	NORTH	J&K HP PJB HARY DLH UP UTRKND
	EAST	BHR JHRKND CHTGH OR WB SKM NORTH- EAST STATES
	WEST	RAJ MP GUJ MAHA GOA
	SOUTH	TLNGN AP KRNTK KER TN LKSDP ANDAMAN & NICOBAR ILS

CLOUD DISTRIBUTION	ISOL	ISOLATED (LESS THAN 25%)
	SCT	SCATTERED (25 TO 50%)
	BKN	BROKEN (51 TO 75%)
	SLD	SOLID (GREATER THAN 75%)

CLOUDS TOP TEMPERATURE	CTT	CLOUD TOP TEMPERATURE
CONVECTION	WK CONVTN	WEAK CONVECTION (CTT GREATER THAN -25°C)
	MOD CONVTN	MODERATE CONVECTION (CTT BETWEEN -25°C TO -40°C)
	INT CONVTN	INTENSE CONVECTION (CTT BETWEEN -41°C TO -70°C)
	V INT CONVTN	VERY INTENSE CONVECTION (CTT LESS THAN -70°C)
METEOROLOGICAL SUB-DIVISIONS, STATES & UNION TERRITORIES	ARUPR	ARUNACHAL PRADESH
	BHR	BIHAR
	CHTGH	CHHATTISGARH
	COTL AP	COASTAL ANDHRA PRADESH
	COTL KRNTK	COASTAL KARNATAKA
	COTL ORS	COASTAL ORISSA
	GUJ	GUJARAT
	GWB	GANGETIC WEST BENGAL
	HARY	HARYANA
	DLH	DELHI
	HP	HIMACHAL PRADESH
	J&K	JAMMU AND KASHMIR
	JHRKND	JHARKHAND
	KER	KERALA
	KKN	KONKAN
	LKSDP	LAKSHADWEEP
	M MAHA	MADHYA MAHARASHTRA
	MAHA	MAHARASHTRA
	MANI	MANIPUR
	MEGHA	MEGHALAYA
MIZO	MIZORAM	
MP	MADHYA PRADESH	
	MRTHWD	MARATHWADA
	NAGA	NAGALAND
	N COTL AP	NORTH COASTAL ANDHRA PRADESH
	NIK	NORTH INTERIOR KARNATAKA
	ORS	ORISSA
	PJB	PUNJAB
	RAJ	RAJASTHAN
	RYLSM	RAYALASEEMA
	SAU & KUTCH	SAURASHTRA & KUTCH
	SHWB	SUB-HIMALAYAN WEST BENGAL
	SIK	SOUTH INTERIOR KARNATAKA
	SKM	SIKKIM
	TLNGN	TELANGANA
	TN	TAMIL NADU
	TRP	TRIPURA
	UP	UTTAR PRADESH

	UTRKND	UTTARAKHAND
	VID	VIDHARBHA
	SHWB	SUB HIMALAYAN WEST BENGAL
	GWB	GANGETIC WEST BENGAL
	ARSEA	ARABIAN SEA
	ILS	ISLANDS
MISCELLANEOUS	ASSW	IN ASSOCIATION WITH
	ASSTD	ASSOCIATED
	LLC	LOW LEVEL CIRCULATION
	EMBDD	EMBEDDED
	N/HOOD	NEIGHBOURHOOD
	EXT	EXTREME