

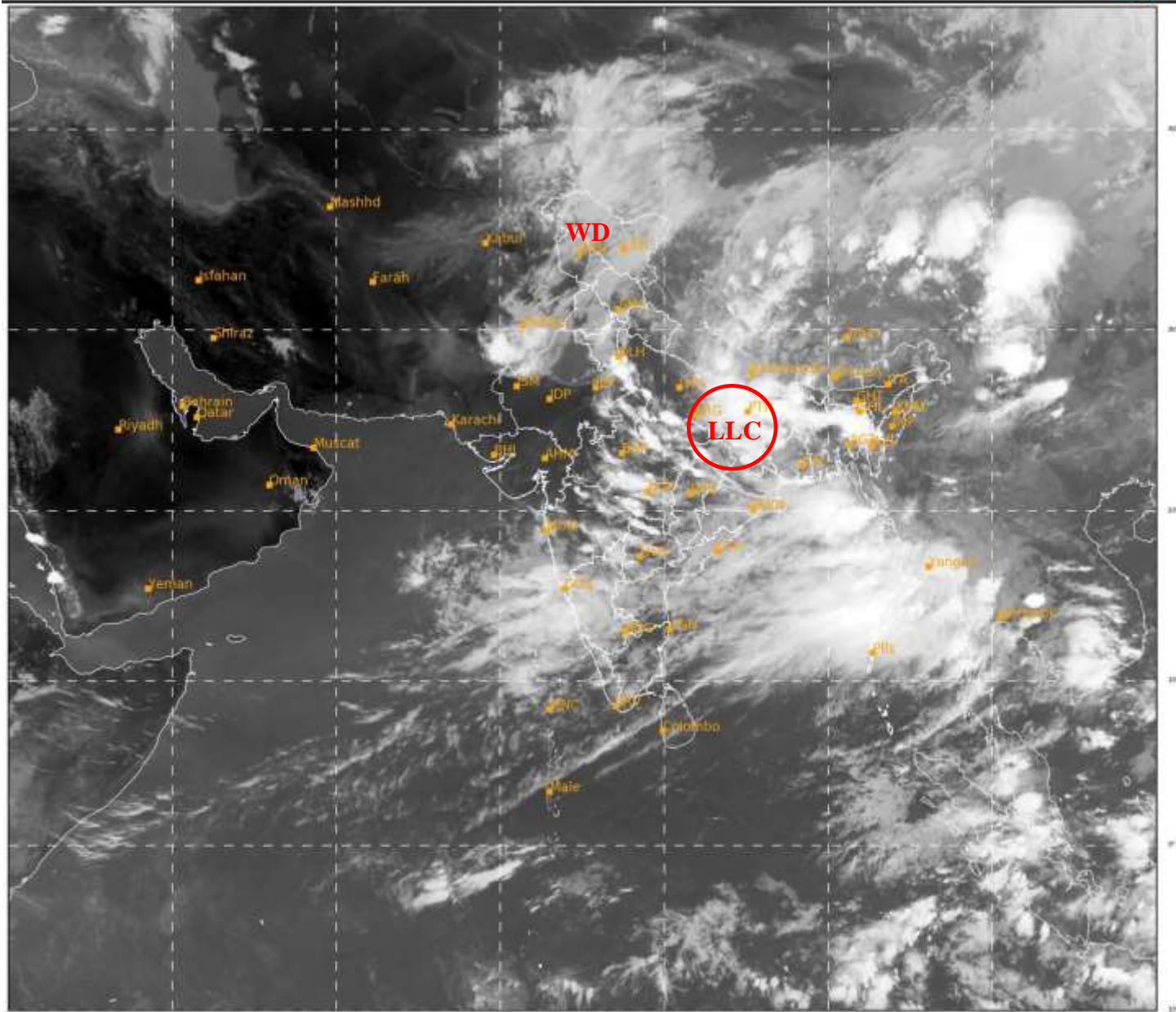


**SATELLITE BULLETIN BASED ON SATELLITE IMAGERIES
AND PRODUCTS**

15.06.2021 TIME 1200 UTC

SAT : INSAT-3D IMG
IMG_TIR1 10.8 um
LIC Mercator

15-06-2021/(1200 to 1226) GMT
15-06-2021/(1730 to 1756) IST



268

940

IMD, DELHI

TCIN50 DEMS 151200

SATELLITE BULLETIN BASED ON INSAT-3D PIC OF 151200 UTC (.)

REGION COVERED BETWEEN LAT 50.0°N TO 30.0°S AND LONG 40.0°E TO 125.0°E (.)

SALIENT FEATURES:-

LLC OVER E UP ADJ BHR & N/HOOD:-

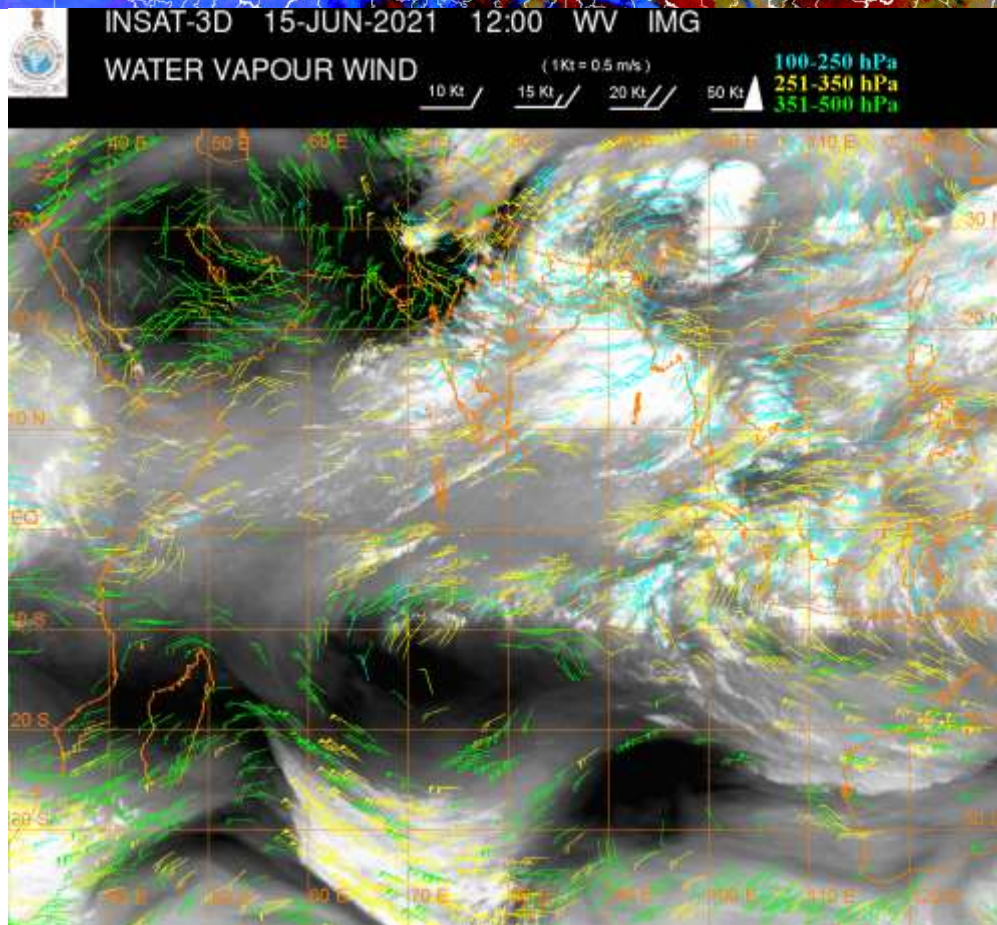
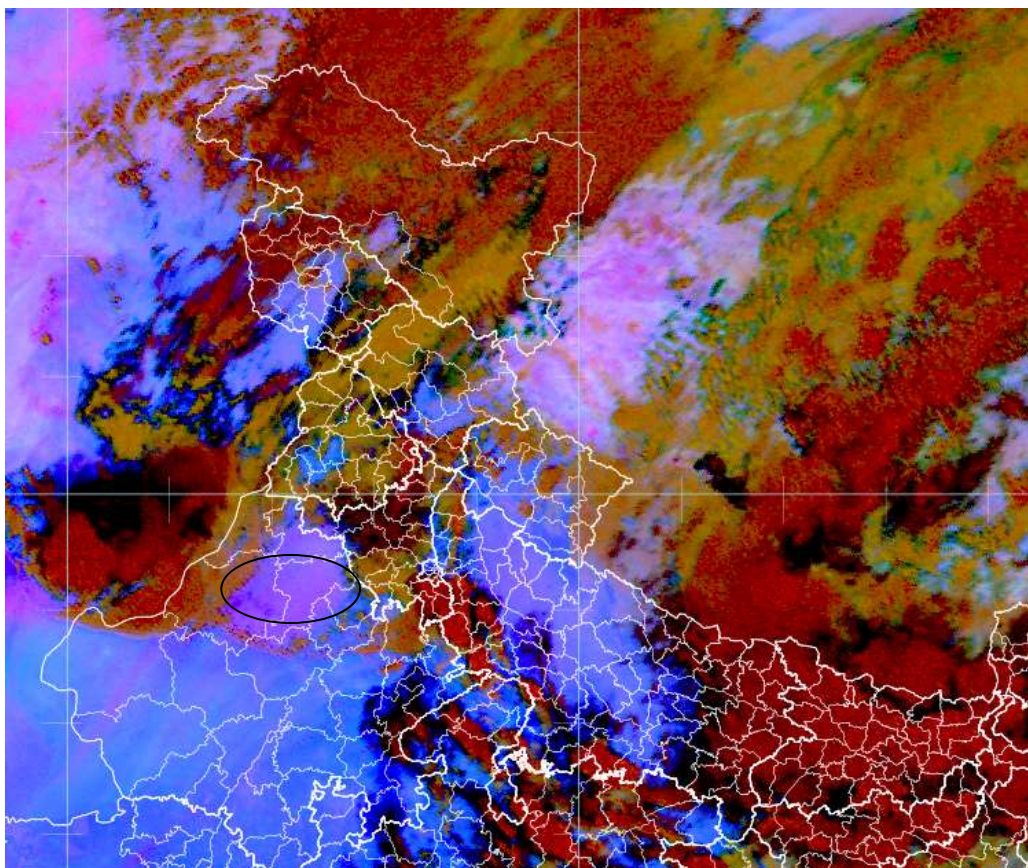
SCT LOW/MED CLOUDS WITH EMBDD INT TO V INT CONVTN OVER EXT E UP BHR N JHRKND AND MOD TO INT CONVTN OVER S JHRKND N CHTGH GWB N ORS AND N/HOOD IN ASSW LOW LEVEL CIRCULATION (LLC) OVER THE AREA (.)

WESTERN DISTURBANCE (WD):-

SCT MULTILAYERED CLOUDS OVER N PAK J&K LADAKH HP PJB N RAJ HARY DLH UTRKND TIBET ADJ CHINA AND N/HOOD IN ASSW WD OVER THE AREA (.)

DUST:-

METOSAT-8 RGB PRODUCT AT 1230 UTC INDICATES DUST OVER NW RAJ (.)



CLOUDS DESCRIPTION WITHIN INDIA:-

NORTH:-

SCT LOW/MED CLOUDS WITH EMBDD INT TO V INT CONVTN OVER EXT PARTS OF UP AND MOD TO INT CONVTN OVER E UP SE HARY ADJ S DLH (.) SCT LOW/MED CLOUDS WITH EMBDD WK TO MOD CONVTN OVER LADAKH J&K HP UTRKND PJB (.) SCT LOW/MED CLOUDS OVER N DLH REST UP (.)

EAST:-

SCT LOW/MED CLOUDS WITH EMBDD INT TO V INT CONVTN OVER BHR N ADJ C JHRKND EXT NW CHTGH S SHWB MEGHA & EXT S ASSAM ADJ SW MANI (.) SCT LOW/MED CLOUDS WITH EMBDD MOD TO INT CONVTN OVER N ORS REST JHRKND GWB N SHWB SKM EXT NE ASSAM N TRP (.) SCT LOW/MED CLOUDS WITH EMBDD WK TO MOD CONVTN OVER REST CHTGH S ORS N ARUPR W ASSAM NAGA MIZO S TRP (.)

WEST:-

SCT LOW/MED CLOUDS WITH EMBDD INT TO V INT CONVTN OVER EXT S & NC MP W VID (.)SCT LOW/MED CLOUDS WITH EMBDD MOD TO INT CONVTN OVER REST N MP EXT E RAJ EAST OF M MAHA MRTHWD E VID (.) SCT LOW/MED CLOUDS WITH EMBDD WK TO MOD CONVTN OVER NW RAJ KKN & GOA (.) SCT LOW/MED CLOUDS OVER E RAJ REST MP GUJ REST MAHA (.)

SOUTH:-

SCT LOW/MED CLOUDS WITH EMBDD MOD TO INT CONVTN OVER NE& COTL KRNTK NC TLNGN ANDAMAN ILS (.) SCT LOW/MED CLOUDS WITH EMBDD WK TO MOD CONVTN OVER REST PARTS OF THE REGION EXCEPT SCT LOW/MED CLOUDS OVER NICOBAR ILS (.)

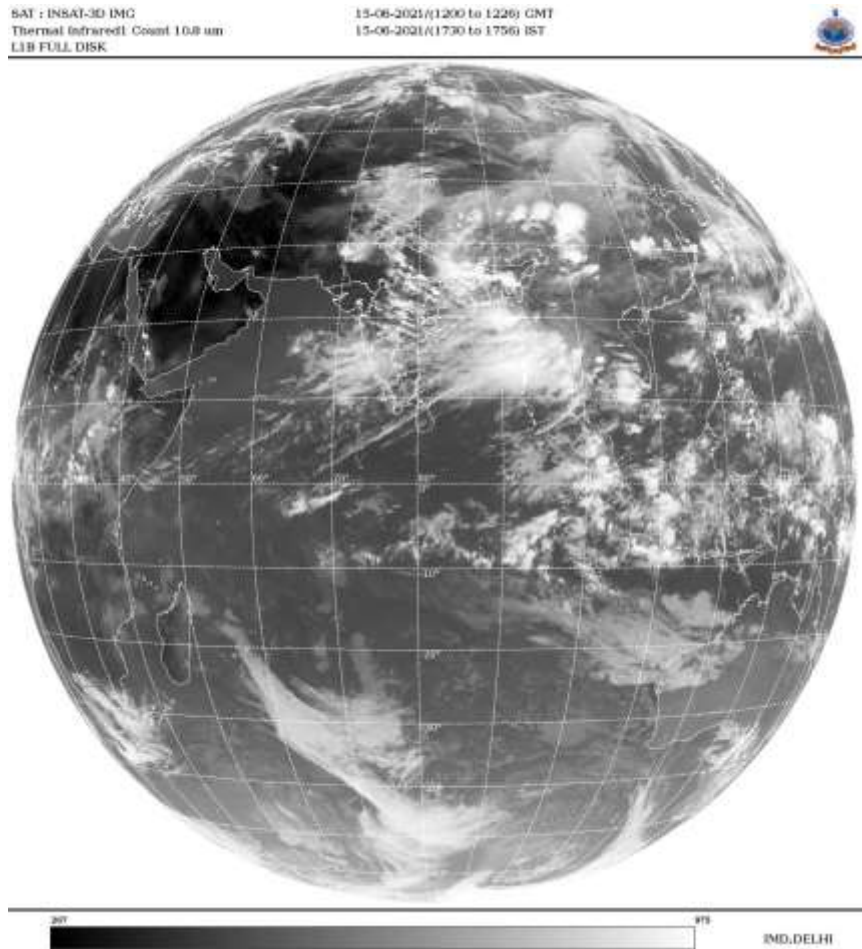
ARABIAN SEA:-

SCT LOW/MED CLOUDS WITH EMBDDD MOD TO INT CONVTN OVER EC ADJ SE ARSEA AND COMORIN (.)

BAY OF BENGAL & ANDAMAN SEA:-

SCT TO BKN LOW/MED CLOUDS WITH EMBDD INT TO V INT CONVTN OVER E BAY N ANDAMAN SEA (.) SCT LOW/MED CLOUDS WITH EMBDD MOD TO INT CONVTN OVER W BAY AND S ANDAMAN SEA (.)

CLOUDS DESCRIPTION OUTSIDE INDIA:-



SCT LOW/MED CLOUDS WITH EMBDD MOD TO INT CONVTN OVER N SRI LANKA PALK STR GULF OF MANNAR N MALDIVES NEPAL BHUTAN TIBET CHINA E CHINA SEA TAIWAN MYANMAR THAILAND GULF OF THAILAND N LAOS S CAMBODIA S VIETNAM SUMATRA STR OF MALACCA MALAY PENINSULA BORNEO S CHINA SEA JAVA ILS & SEA CELEBES ILS & SEA PHILIPPINES SULU SEA SE MADAGASCAR AND OVER INDIAN OCEAN BET EQT TO LAT 13.0S LONG 64.5E TO 110.0E AND BET EQT TO LAT 05.0N LONG 41.5E TO 75.0E (.)

TOO 15/1835EF=

NNNN

LEGEND:-

REGION	NORTH	J&K HP PJB HARY DLH UP UTRKND
	EAST	BHR JHRKND CHTGH ORS WB SKM NORTH- EAST STATES
	WEST	RAJ MP GUJ MAHA GOA
	SOUTH	TLNGN AP KRNTK KER TN LKSDP ANDAMAN & NICOBAR ILS

CLOUD DISTRIBUTION	ISOL	ISOLATED (LESS THAN 25%)
	SCT	SCATTERED (25 TO 50%)
	BKN	BROKEN (51 TO 75%)
	SLD	SOLID (GREATER THAN 75%)
CLOUDS TOP TEMPERATURE	CTT	CLOUD TOP TEMPERATURE
CONVECTION	WK CONVTN	WEAK CONVECTION (CTT GREATER THAN -25°C)
	MOD CONVTN	MODERATE CONVECTION (CTT BETWEEN -25°C TO -40°C)
	INT CONVTN	INTENSE CONVECTION (CTT BETWEEN -41°C TO -70°C)
	V INT CONVTN	VERY INTENSE CONVECTION (CTT LESS THAN -70°C)
METEOROLOGICAL SUB-DIVISIONS, STATES & UNION TERRITORIES	ARUPR	ARUNACHAL PRADESH
	BHR	BIHAR
	CHTGH	CHHATTISGARH
	COTL AP	COASTAL ANDHRA PRADESH
	COTL KRNTK	COASTAL KARNATAKA
	COTL ORS	COASTAL ORISSA
	GUJ	GUJARAT
	GWB	GANGETIC WEST BENGAL
	HARY	HARYANA
	DLH	DELHI
	HP	HIMACHAL PRADESH
	J&K	JAMMU AND KASHMIR
	JHRKND	JHARKHAND
	KER	KERALA
	KKN	KONKAN
	LKSDP	LAKSHADWEEP
	M MAHA	MADHYA MAHARASHTRA
	MAHA	MAHARASHTRA
	MANI	MANIPUR
	MEGHA	MEGHALAYA

	MIZO	MIZORAM
	MP	MADHYA PRADESH
	MRTHWD	MARATHWADA
	NAGA	NAGALAND
	N COTL AP	NORTH COASTAL ANDHRA PRADESH
	NIK	NORTH INTERIOR KARNATAKA
	ORS	ORISSA
	PJB	PUNJAB
	RAJ	RAJASTHAN
	RYLSM	RAYALASEEMA
	SAU & KUTCH	SAURASHTRA & KUTCH
	SHWB	SUB-HIMALAYAN WEST BENGAL
	SIK	SOUTH INTERIOR KARNATAKA
	SKM	SIKKIM
	TLNGN	TELANGANA
	TN	TAMIL NADU
	TRP	TRIPURA
	UP	UTTAR PRADESH
	UTRKN	UTTARAKHAND
	VID	VIDHARBHA
	SHWB	SUB HIMALAYAN WEST BENGAL
	GWB	GANGETIC WEST BENGAL
	ARSEA	ARABIAN SEA
	ILS	ISLANDS
MISCELLANEOUS	ASSW	IN ASSOCIATION WITH
	ASSTD	ASSOCIATED
	LLC	LOW LEVEL CIRCULATION
	EMBDD	EMBEDDED
	N/HOOD	NEIGHBOURHOOD
	EXT	EXTREME