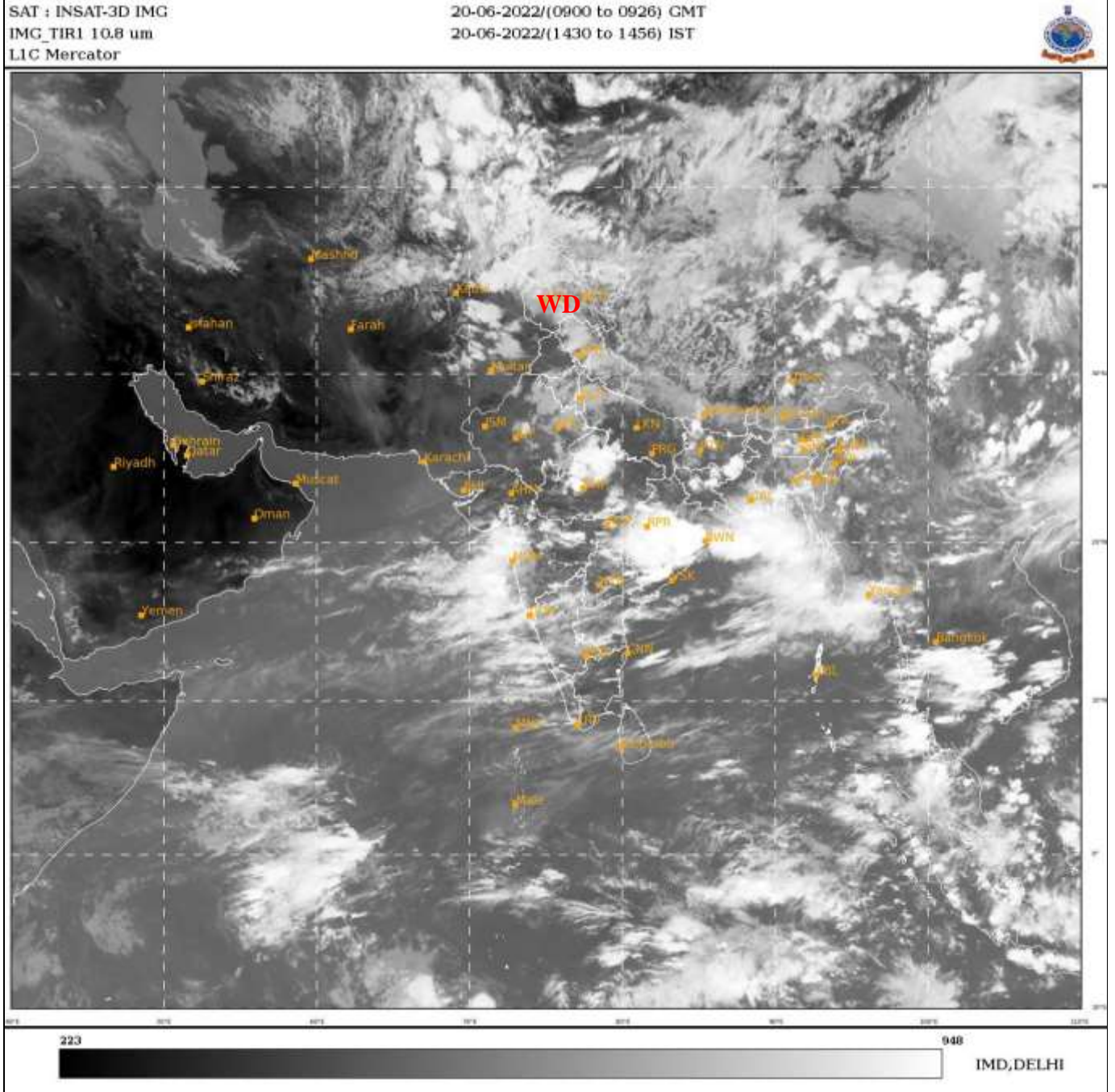




भारत मौसम विज्ञान विभाग
पृथ्वी विज्ञान मंत्रालय
India Meteorological Department
Ministry of Earth Sciences



**SATELLITE BULLETIN BASED ON SATELLITE
IMAGERIES AND PRODUCTS**
20.06.2022 TIME 0900 UTC



TCIN50 DEMS 200900

SATELLITE BULLETIN BASED ON INSAT-3D PIC OF 200900 UTC (.)

REGION COVERED BETWEEN LAT 50.0°N TO 30.0°S AND LONG 40.0°E TO 125.0°E (.)

SALIENT FEATURES:-

WESTERN DISTURBANCE (WD):-

SCT TO BKN MULTILAYERED CLOUDS OVER PAK J&K LADAKH HP PJB HARY N RAJ UP UTRKND TIBET ADJ CHINA AND N/HOOD IN ASSW **WD** OVER THE AREA (.)

THUNDERSTORM / CONVECTIVE ACTIVITY:-

THUNDERSTORM / CONVECTIVE ACTIVITIES OBSERVED OVER LADAKH NW J&K SW UP N MP NW BHR N JHRKND S CHTGH ORS COTL GWB SHWB MEGHA ASSAM SE GUJ TLNGN N COTL AP LKSDP ILS AREA (.)

DUST:-

METESAT-8 RGB DUST PRODUCT AT 0900 UTC INDICATES LIGHT DUST OVER EXT W RAJ NW GUJ (.)

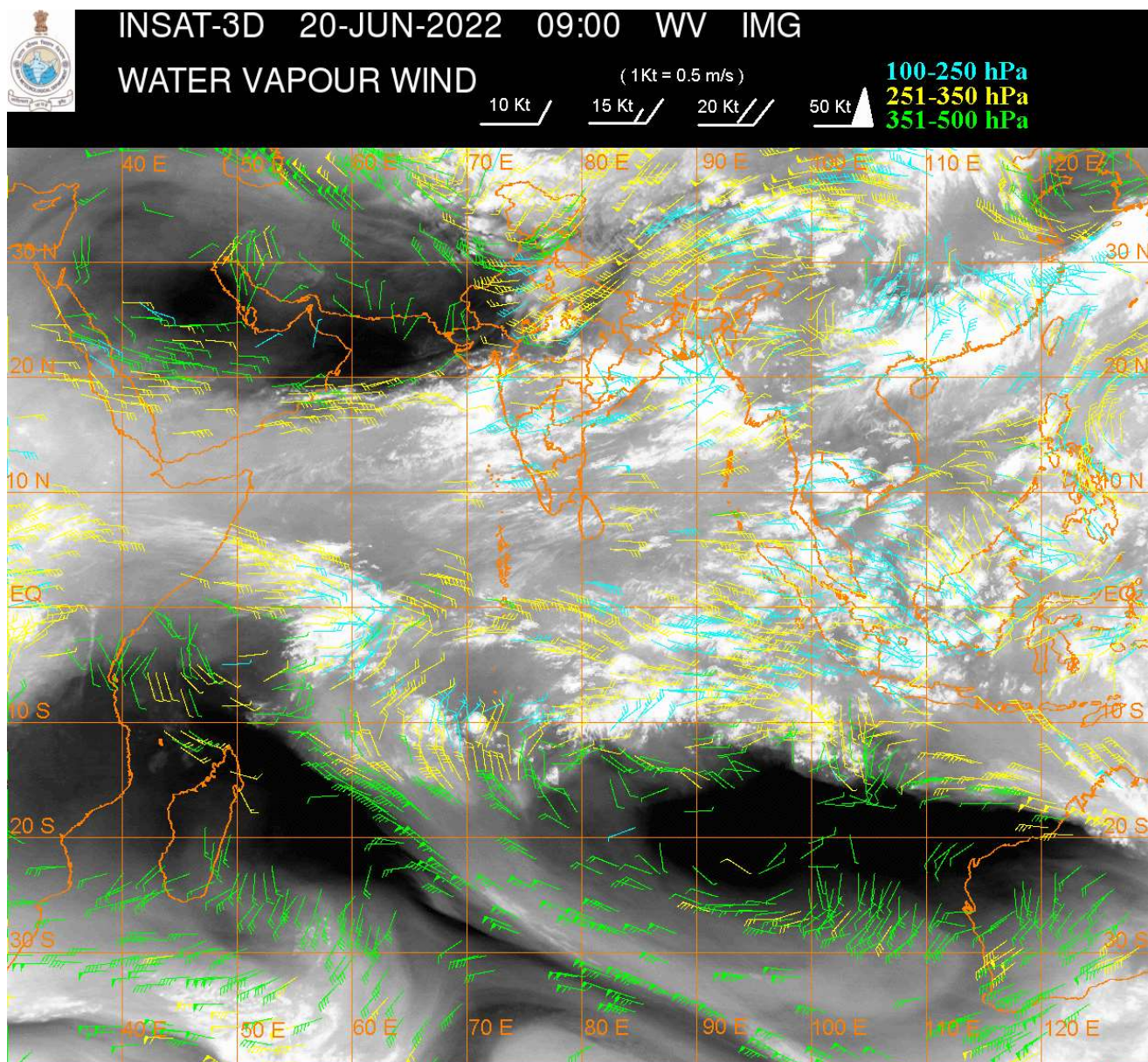
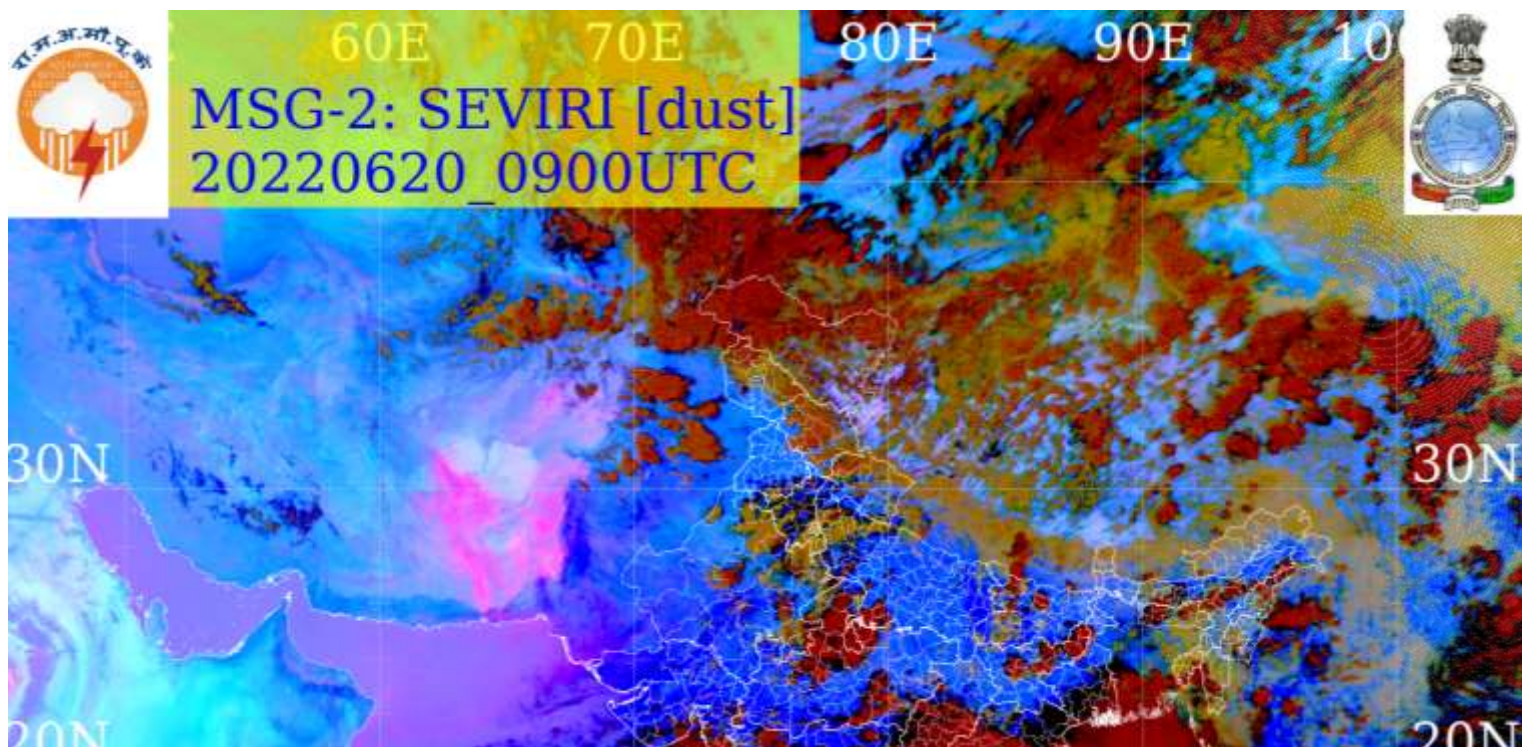
PRECIPITATION NOWCASTING:-

(BASED ON SCOPE NOWCASTING TOOL AT 0800 UTC AT A LEAD TIME OF 03 HRS (MM/HR):-

RAINFALL UP TO 10-20 MM LIKELY OVER EXT VID S CHTGH SW& COTL ORS N MP (.)

RAINFALL UP TO 5-10 MM LIKELY OVER N ORS S GWB NE NIK S TLNGN N RYLSM W MEGHA E ASSAM S BHR (.)

RAINFALL UP TO 0.5-5 MM LIKELY OVER N J&K NW LADAKH N BHR NE JHRKND SHWB W ASSAM TRP N COTL AP KKN N KER LKSDP ILS NICOBAR AREA (.)



CLOUDS DESCRIPTION WITHIN INDIA:-

NORTH:-

SCT TO BKN LOW/MED CLOUDS WITH EMBDD MOD TO INT CONVTN OVER NW LADAKH AND NW J&K WK TO MOD CONVTN OVER REST LADAKH REST J&K HP UTRKND PJB S HARY UP (.) SCT LOW/MED CLOUDS OVER DLH (.)

EAST:-

SCT TO BKN LOW/MED CLOUDS WITH EMBDD INT TO V INT CONVTN OVER S CHTGH ORS N JHRKND NW BHR (MINIMUM CTT MINUS 93 DEG C) AND MOD TO INT CONVTN OVER GWB W MEGHA ASSAM S BD (.) SCT TO BKN LOW/MED CLOUDS WITH EMBDD WK TO MOD CONVTN OVER W BHR S JHRKND N CHTGH N GWB SHWB SKM REST NE STATES (.)

WEST:-

SCT TO BKN LOW/MED CLOUDS WITH EMBDD INT TO V INT CONVTN OVER N MP VID(MINIMUM CTT MINUS 81 DEG C) (.)SCT TO BKN LOW/MED CLOUDS WITH EMBDD MOD TO INT CONVTN OVER EC RAJ SE MP SE GUJ KKN S M MAHA (.) SCT LOW/MED CLOUDS WITH EMBDD WK TO MOD CONVTN OVER N RAJ REST MAHA & GOA (.) SCT LOW/MED CLOUDS OVER S RAJ REST GUJ REST MP (.)

SOUTH:-

SCT TO BKN LOW/MED CLOUDS WITH EMBDD INT TO V INT CONVTN OVER N COTL AP (MINIMUM CTT MINUS 78 DEG C) (.) SCT LOW/MED CLOUDS WITH EMBDD MOD TO INT CONVTN OVER NIK TLNGN LKSDP (.)SCT LOW/MED CLOUDS WITH EMBDD WK TO MOD CONVTN OVER RYLSM REST KRNTK N KER (.) SCT LOW/MED CLOUDS OVER S KER TN ANDAMAN& NICOBAR ILS (.)

ARABIAN SEA:-

SCT TO BKN LOW/MED CLOUDS WITH EMBDD INT TO V INT CONVTN OVER NE ADJ EC ARSEA GULF OF CAMBAY (.) SCT LOW/MED CLOUDS WITH EMBDD MOD TO INT CONVTN OVER SE ARSEA LKSDP ILS AREA (.) SCT LOW/MED CLOUDS WITH EMBDD ISOL WK TO MOD CONVTN OVER WC ARSEA (.)

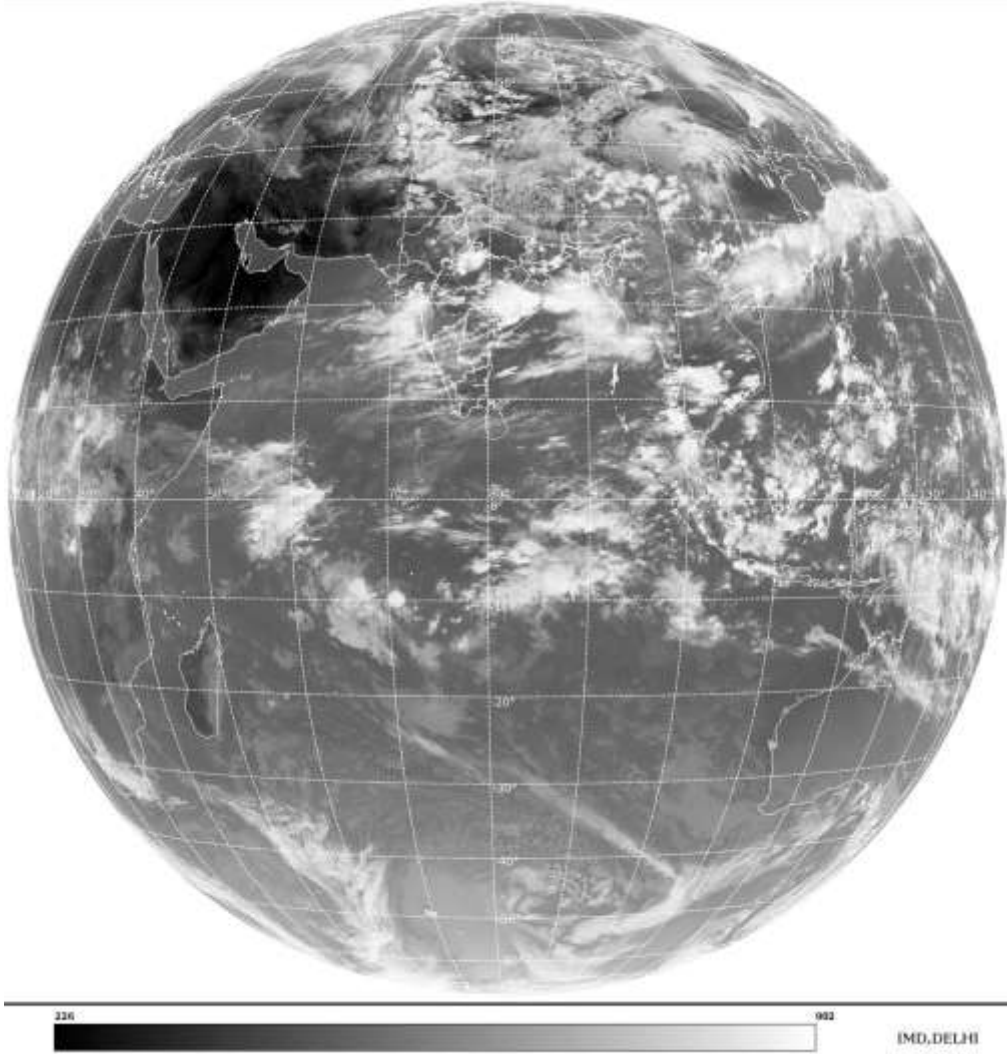
BAY OF BENGAL & ANDAMAN SEA:-

SCT TO BKN LOW/MED CLOUDS WITH EMBDD INT TO V INT CONVTN OVER NORTH ADJ CENTRAL BAY (.) SCT LOW/MED CLOUDS WITH EMBDD MOD TO INT CONVTN OVER SW BAY AND ANDAMAN SEA (.)

CLOUDS DESCRIPTION OUTSIDE INDIA:-

SAT : INSAT-3D IMG
Thermal Infrared1 Count 10.8 um
LIB FULL DISK

20-06-2022(0900 to 0926) GMT
20-06-2022(1430 to 1456) IST



SCT LOW/MED CLOUDS WITH EMBDD MOD TO INT CONVTN OVER PAK NEPAL BHUTAN TIBET CHINA E CHINA SEA MYANMAR THAILAND GULF OF THAILAND GULF OF TONKIN SUMATRA STR OF MALACCA MALAYSIA BORNEO SOUTH CHINA SEA JAVA ILS & SEA CELEBES ILS & SEA PHILIPPINES SULU SEA AND OVER INDIAN OCEAN BET LAT 5.0N TO 15.0S LONG 50.0E TO 120.0E (.)

TOO 20/1515 HRS IST=

NNNN

LEGEND:-

REGION	NORTH	J&K HP PJB HARY DLH UP UTRKND
	EAST	BHR JHRKND CHTGH OR WB SKM NORTH- EAST STATES

	WEST	RAJ MP GUJ MAHA GOA
	SOUTH	TLNGN AP KRNTK KER TN LKSDP ANDAMAN & NICOBAR ILS

CLOUD DISTRIBUTION	ISOL	ISOLATED (LESS THAN 25%)	
	SCT	SCATTERED (25 TO 50%)	
	BKN	BROKEN (51 TO 75%)	
	SLD	SOLID (GREATER THAN 75%)	
CLOUDS TOP TEMPERATURE	CTT	CLOUD TOP TEMPERATURE	
CONVECTION	WK CONVTN	WEAK CONVECTION (CTT GREATER THAN -25°C)	
	MOD CONVTN	MODERATE CONVECTION (CTT BETWEEN -25°C TO -40°C)	
	INT CONVTN	INTENSE CONVECTION (CTT BETWEEN -41°C TO -70°C)	
	V INT CONVTN	VERY INTENSE CONVECTION (CTT LESS THAN -70°C)	
METEOROLOGICAL SUB-DIVISIONS, STATES & UNION TERRITORIES	ARUPR	ARUNACHAL PRADESH	
	BHR	BIHAR	
	CHTGH	CHHATTISGARH	
	COTL AP	COASTAL ANDHRA PRADESH	
	COTL KRNTK	COASTAL KARNATAKA	
	COTL ORS	COASTAL ORISSA	
	GUJ	GUJARAT	
	GWB	GANGETIC WEST BENGAL	
	HARY	HARYANA	
	DLH	DELHI	
	HP	HIMACHAL PRADESH	
	J&K	JAMMU AND KASHMIR	
	JHRKND	JHARKHAND	
	KER	KERALA	
	KKN	KONKAN	
	LKSDP	LAKSHADWEEP	
	M MAHA	MADHYA MAHARASHTRA	
	MAHA	MAHARASHTRA	
	MANI	MANIPUR	
	MEGHA	MEGHALAYA	
	MIZO	MIZORAM	
	MP	MADHYA PRADESH	
		MRTHWD	MARATHWADA
		NAGA	NAGALAND
		N COTL AP	NORTH COASTAL ANDHRA PRADESH
		NIK	NORTH INTERIOR KARNATAKA
		ORS	ORISSA
		PJB	PUNJAB
RAJ		RAJASTHAN	
RYLSM		RAYALASEEMA	

	SAU & KUTCH	SAURASHTRA & KUTCH
	SHWB	SUB-HIMALAYAN WEST BENGAL
	SIK	SOUTH INTERIOR KARNATAKA
	SKM	SIKKIM
	TLNGN	TELANGANA
	TN	TAMIL NADU
	TRP	TRIPURA
	UP	UTTAR PRADESH
	UTRKND	UTTARAKHAND
	VID	VIDHARBHA
	SHWB	SUB HIMALAYAN WEST BENGAL
	GWB	GANGETIC WEST BENGAL
	ARSEA	ARABIAN SEA
	ILS	ISLANDS
MISCELLANEOUS	ASSW	IN ASSOCIATION WITH
	ASSTD	ASSOCIATED
	LLC	LOW LEVEL CIRCULATION
	EMBDD	EMBEDDED
	N/HOOD	NEIGHBOURHOOD
	EXT	EXTREME