



भारत मौसम विज्ञान विभाग
पृथ्वी विज्ञान मंत्रालय
India Meteorological Department
Ministry of Earth Sciences

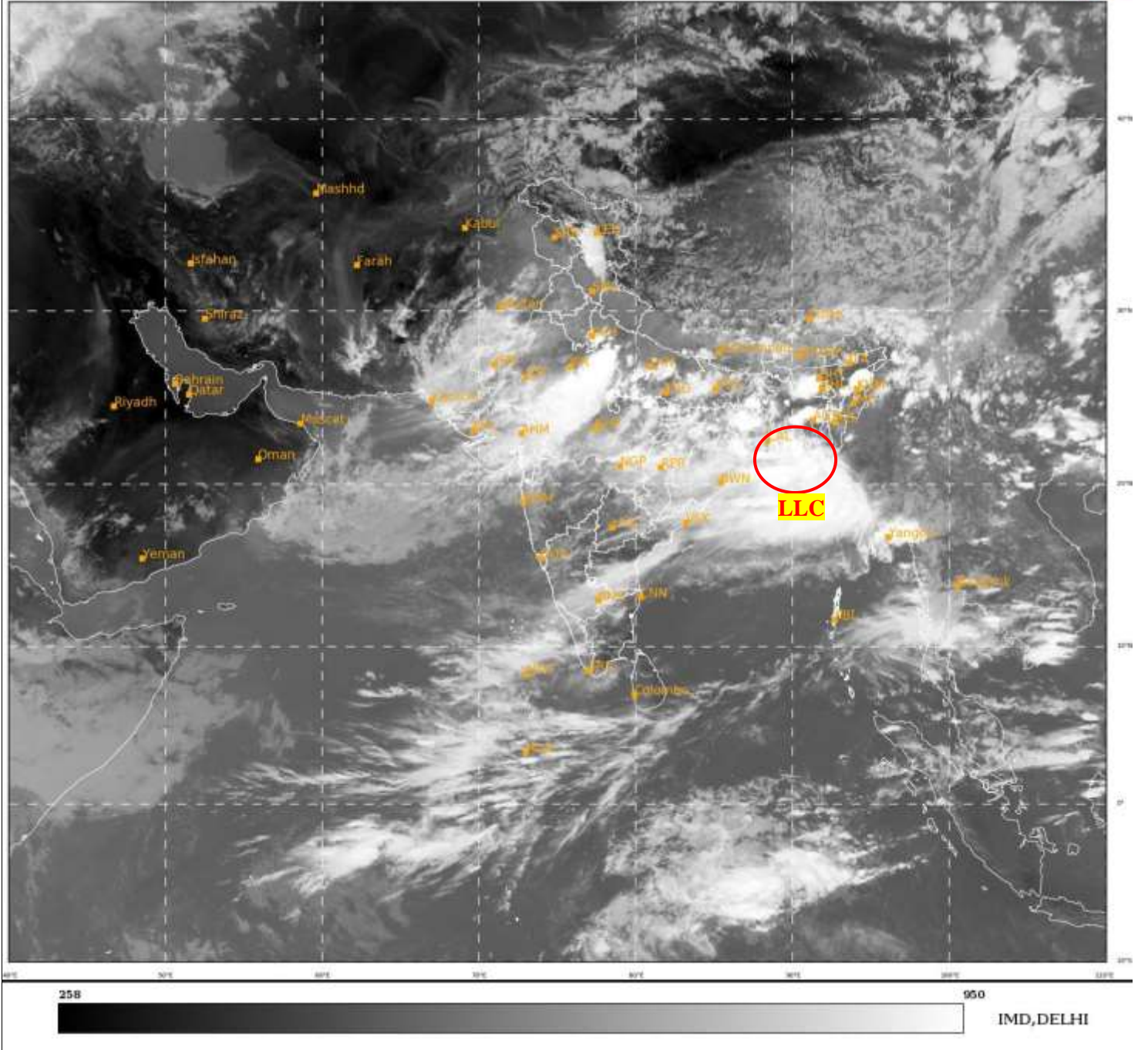


**SATELLITE BULLETIN BASED ON SATELLITE IMAGERIES
AND PRODUCTS**

27.07.2021 TIME 0900 UTC

SAT : INSAT-3D IMG
IMG_TIR1 10.8 um
LIC Mercator

27-07-2021/(0900 to 0926) GMT
27-07-2021/(1430 to 1456) IST



TCIN50 DEMS 270900

SATELLITE BULLETIN BASED ON INSAT-3D PIC OF 270900 UTC (.)

REGION COVERED BETWEEN LAT 50.0°N TO 30.0°S AND LONG 40.0°E TO 125.0°E (.)

SA LIENT FEATURES:-

LLC OVER NORTH BAY ADJ COTL BANGLADESH AND N/HOOD:-

BKN LOW/MED CLOUDS WITH EMBDD INT TO V INT CONVTN OVER N BAY ADJ COTL BD & N/HOOD IN ASSW LOW LEVEL CIRCULATION (LLC) OVER THE AREA (.) MINIMUM CTT MINUS 93 DEG C (.)



INSAT-3D 27-JUL-2021 09:00 WV IMG

WATER VAPOUR WIND

(1Kt = 0.5 m/s)

10 Kt

15 Kt

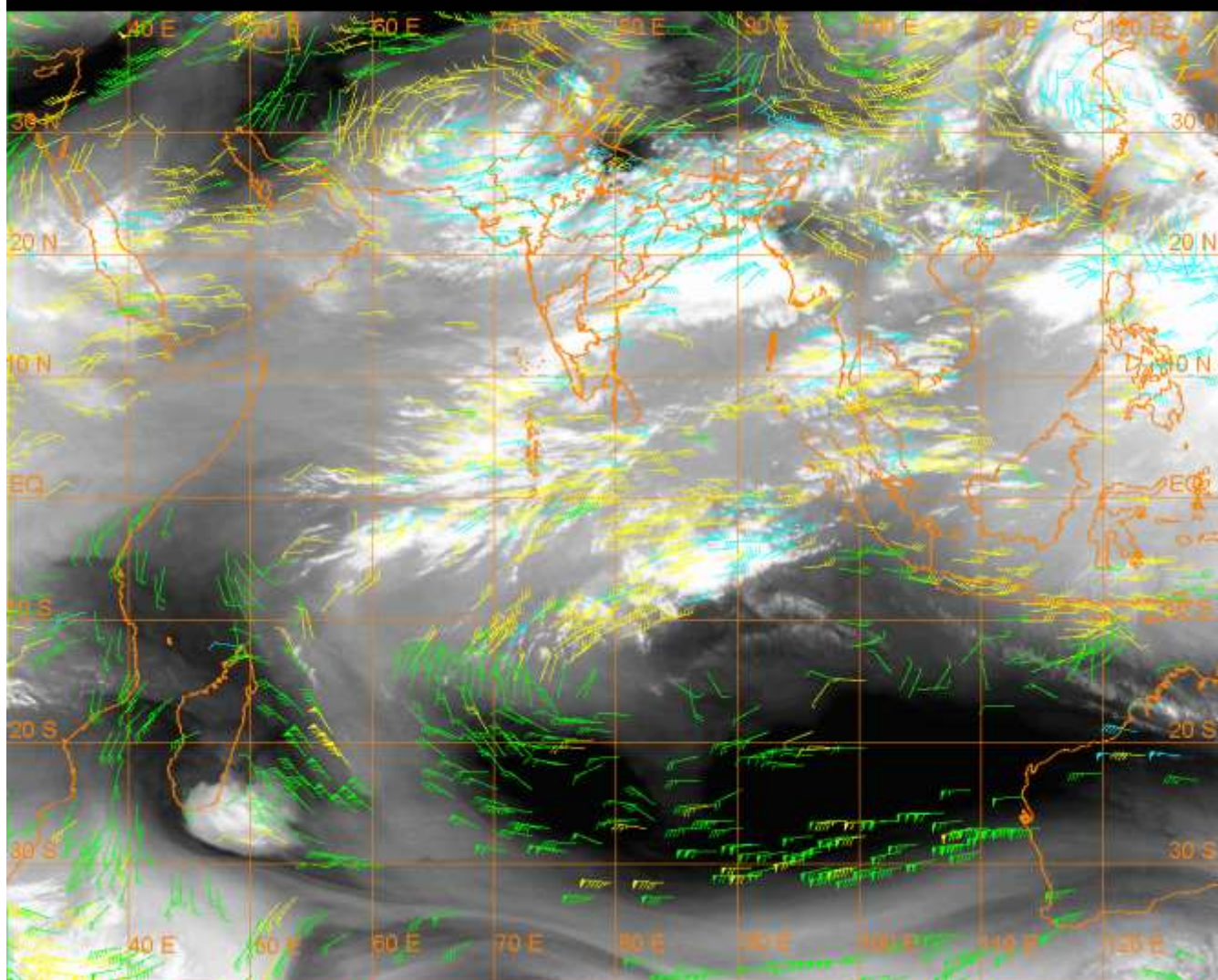
20 Kt

50 Kt

100-250 hPa

251-350 hPa

351-500 hPa



CLOUDS DESCRIPTION WITHIN INDIA:-

NORTH:-

SCT LOW/MED CLOUDS WITH EMBDD INT TO V INT CONVTN OVER EXT SW UP (MINIMUM CTT MINUS 93 DEG C) AND MOD TO INT CONVTN OVER SW LADAKH ADJ NC HP E UP (.) SCT LOW/MED CLOUDS WITH EMBDD ISOL WK TO MOD CONVTN OVER REST LADAKH C J&K SE HP N UTRKND PJB W HARY REST UP (.) SCT LOW/MED CLOUDS OVER REST PARTS OF THE REGION (.)

EAST:-

BKN TO SCT LOW/MED CLOUDS WITH EMBDD INT TO V INT CONVTN OVER JHRKND GWB EXT SW & EXT E ASSAM ADJ W MEGHA NAGA S BD (MINIMUM CTT MINUS 93 DEG C) N CHTGH NE ORS (MINIMUM CTT MINUS 78 DEG C) (.) SCT LOW/MED CLOUDS WITH EMBDD MOD TO INT CONVTN OVER BHR REST CHTGH REST ORS REST GWB N SKM SW & E ARUPR AND WK TO MOD CONVTN OVER SHWB REST SKM REST NE STATES & REST BD (.)

WEST:-

SCT LOW/MED CLOUDS WITH EMBDD INT TO V INT CONVTN OVER SE RAJ NW & NE MP (MINIMUM CTT MINUS 84 DEG C) (.) SCT LOW/MED CLOUDS WITH EMBDD MOD TO INT CONVTN OVER W RAJ SW & SE MP GUJ VID AND ISOL WK TO MOD CONVTN OVER REST RAJ REST MP NORTH MADHYA MAHA E MRTHWD (.) SCT LOW/MED CLOUDS OVER REST PARTS OF THE REGION (.)

SOUTH:-

SCT LOW/MED CLOUDS WITH EMBDD MOD TO INT CONVTN OVER S RYLSM N COTL & S AP SE SIK C KER AND ISOL WK TO MOD CONVTN OVER TLNGN KRNTK REST KER TN LKSDP S ANDAMAN & NICOBAR ILS (.)

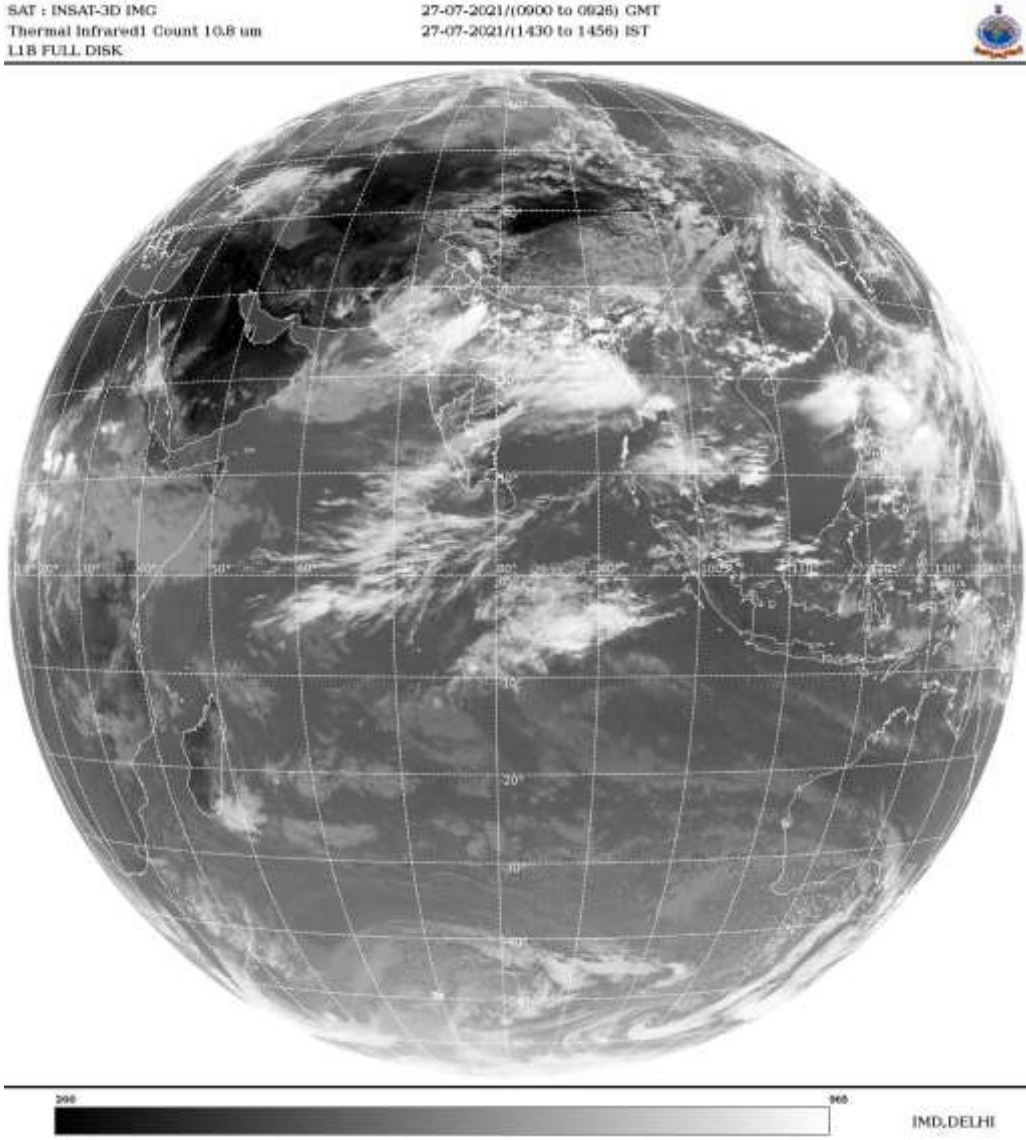
ARABIAN SEA:-

SCT LOW/MED CLOUDS WITH EMBDD MOD TO INT CONVTN OVER SE ARSEA AND WK TO MOD CONVTN OVER NORTH ADJ CENTRAL ARSEA (.)

BAY OF BENGAL & ANDAMAN SEA:-

**BKN LOW/MED CLOUDS WITH EMBDD INT TO V INT CONVTN OVER N BAY ARAKAN COAST
(.) SCT LOW/MED CLOUDS WITH EMBDD MOD TO INT CONVTN OVER C BAY ANDAMAN SEA
GULF OF MARTABAN AND ISOL WK TO MOD CONVTN OVER S BAY (.)**

CLOUDS DESCRIPTION OUTSIDE INDIA:-



**SCT LOW/MED CLOUDS WITH EMBDD MOD TO INT CONVTN OVER MALDIVES S PAK E NEPAL
BHUTAN TIBET CHINA MYANMAR THAILAND GULF OF THAILAND CAMBODIA N SUMATRA
STR OF MALACCA MALAY PENINSULA BORNEO S CHINA SEA PHILIPPINES E CHINA SEA AND
OVER INDIAN OCEAN BET LAT 5.0N TO 10.0S LONG 57.0E TO 97.0E (.)**

TOO 27/1550EF=

NNNN

LEGEND:-

REGION	NORTH	J&K HP PJB HARY DLH UP UTRKND
	EAST	BHR JHRKND CHTGH ORS WB SKMNORTH- EAST STATES
	WEST	RAJ MP GUJ MAHA GOA
	SOUTH	TLNGN AP KRNTK KER TN LKSDP ANDAMAN & NICOBAR ILS

CLOUD DISTRIBUTION	ISOL	ISOLATED (LESS THAN 25%)
	SCT	SCATTERED (25 TO 50%)
	BKN	BROKEN (51 TO 75%)
	SLD	SOLID (GREATER THAN 75%)
CLOUDS TOP TEMPERATURE	CTT	CLOUD TOP TEMPERATURE
CONVECTION	WK CONVTN	WEAK CONVECTION (CTT GREATER THAN -25°C)
	MOD CONVTN	MODERATE CONVECTION (CTT BETWEEN -25°C TO -40°C)
	INT CONVTN	INTENSE CONVECTION (CTT BETWEEN -41°C TO -70°C)
	V INT CONVTN	VERY INTENSE CONVECTION (CTT LESS THAN -70°C)
METEOROLOGICAL SUB-DIVISIONS, STATES & UNION TERRITORIES	ARUPR	ARUNACHAL PRADESH
	BHR	BIHAR
	CHTGH	CHHATTISGARH
	COTL AP	COASTAL ANDHRA PRADESH
	COTL KRNTK	COASTAL KARNATAKA
	COTL ORS	COASTAL ORISSA
	GUJ	GUJARAT
	GWB	GANGETIC WEST BENGAL
	HARY	HARYANA
	DLH	DELHI
	HP	HIMACHAL PRADESH
	J&K	JAMMU AND KASHMIR
	JHRKND	JHARKHAND
	KER	KERALA
	KKN	KONKAN
	LKSDP	LAKSHADWEEP
	M MAHA	MADHYA MAHARASHTRA
	MAHA	MAHARASHTRA
	MANI	MANIPUR
	MEGHA	MEGHALAYA
	MIZO	MIZORAM
	MP	MADHYA PRADESH
	MRTHWD	MARATHWADA
	NAGA	NAGALAND
	N COTL AP	NORTH COASTAL ANDHRA PRADESH
	NIK	NORTH INTERIOR KARNATAKA
	ORS	ORISSA
	PJB	PUNJAB
	RAJ	RAJASTHAN
	RYLSM	RAYALASEEMA
	SAU & KUTCH	SAURASHTRA & KUTCH
	SHWB	SUB-HIMALAYAN WEST BENGAL
	SIK	SOUTH INTERIOR KARNATAKA
	SKM	SIKKIM

	TLNGN	TELANGANA
	TN	TAMIL NADU
	TRP	TRIPURA
	UP	UTTAR PRADESH
	UTRKND	UTTARAKHAND
	VID	VIDHARBHA
	SHWB	SUB HIMALAYAN WEST BENGAL
	GWB	GANGETIC WEST BENGAL
	ARSEA	ARABIAN SEA
	ILS	ISLANDS
MISCELLANEOUS	ASSW	IN ASSOCIATION WITH
	ASSTD	ASSOCIATED
	LLC	LOW LEVEL CIRCULATION
	EMBDD	EMBEDDED
	N/HOOD	NEIGHBOURHOOD
	EXT	EXTREME