



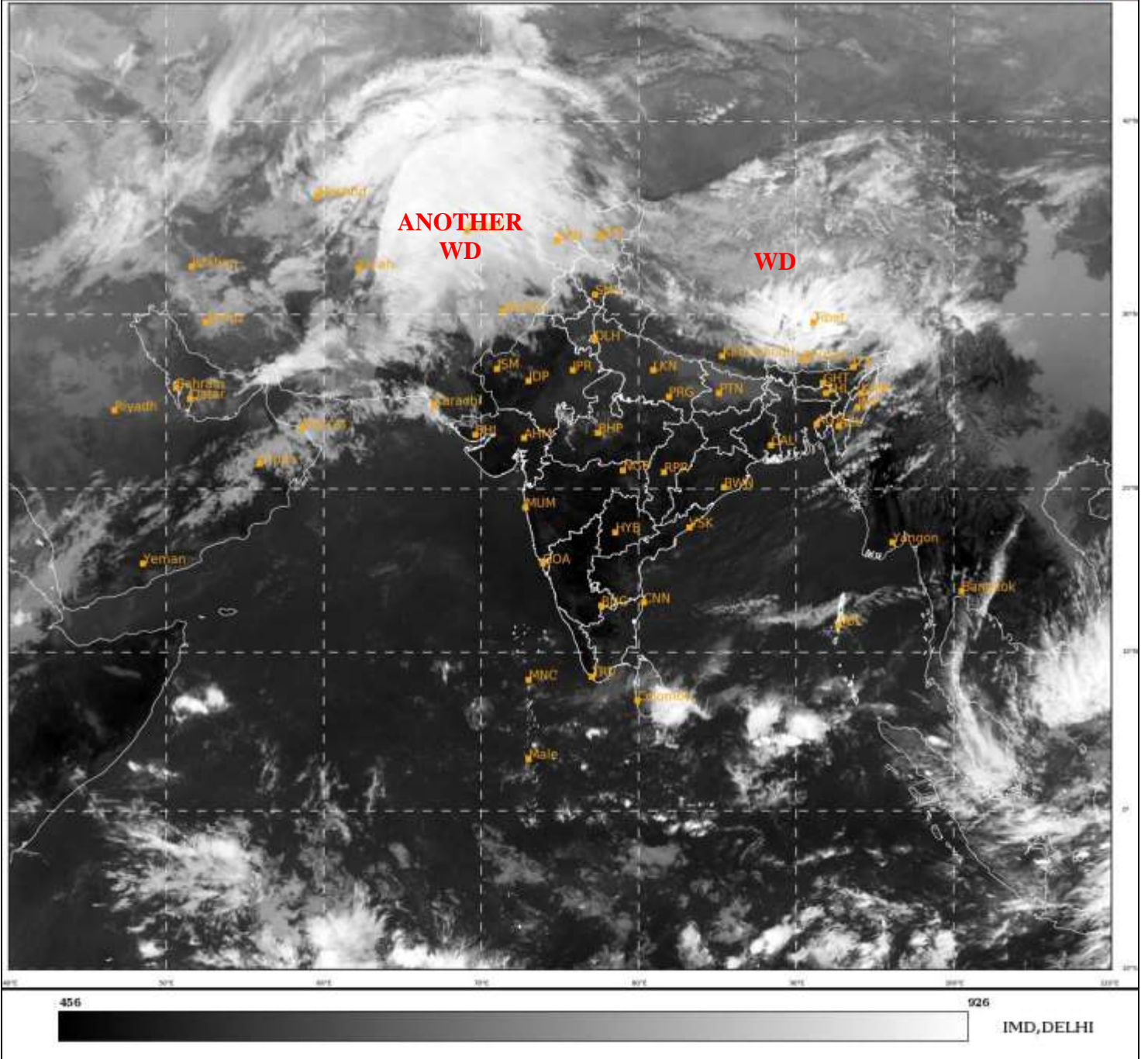
भारत मौसम विज्ञान विभाग  
पृथ्वी विज्ञान मंत्रालय  
India Meteorological Department  
Ministry of Earth Sciences



**SATELLITE BULLETIN BASED ON SATELLITE**  
**IMAGERIES AND PRODUCTS**  
**03.01.2022 TIME 0600 UTC**

SAT : INSAT-3D IMG  
IMG\_TIR1 10.8 um  
L1C Mercator

03-01-2022/(0600 to 0627) GMT  
03-01-2022/(1130 to 1157) IST



TCIN50 DEMS 030600

SATELLITE BULLETIN BASED ON INSAT-3D PIC OF 030600 UTC (.)

REGION COVERED BETWEEN LAT 50.0°N TO 30.0°S AND LONG 40.0°E TO 125.0°E (.)

**SALIENT FEATURES:-**

**WESTERN DISTURBANCE (WD):-**

SCT MULTILAYERED CLOUDS OVER TIBET ADJ CHINA IN ASSW **WD** OVER THE AREA (.)

SCT MULTILAYERED CLOUDS OVER S CASPIAN SEA IRAN AFGAN PAK J&K LADAKH AND N/HOOD IN ASSW **ANOTHER WD** OVER THE AREA (.)

**FOG / LOW CLOUDS:-**

**RGB DAY MICROPHYSICS PRODUCT AT 0600 UTC INDICATES SCT TO BKN FOG/ LOW CLOUDS OVER NE UP BHR SHWB ADJ NE BD EXTREME S NEPAL (.)**

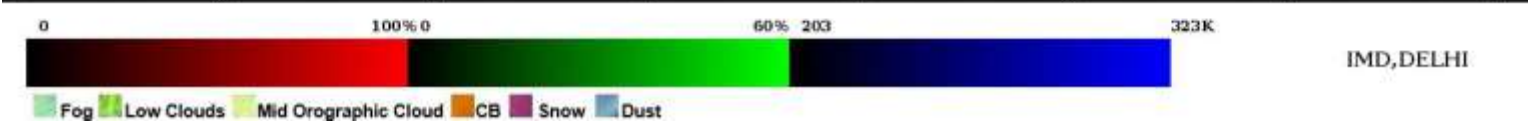
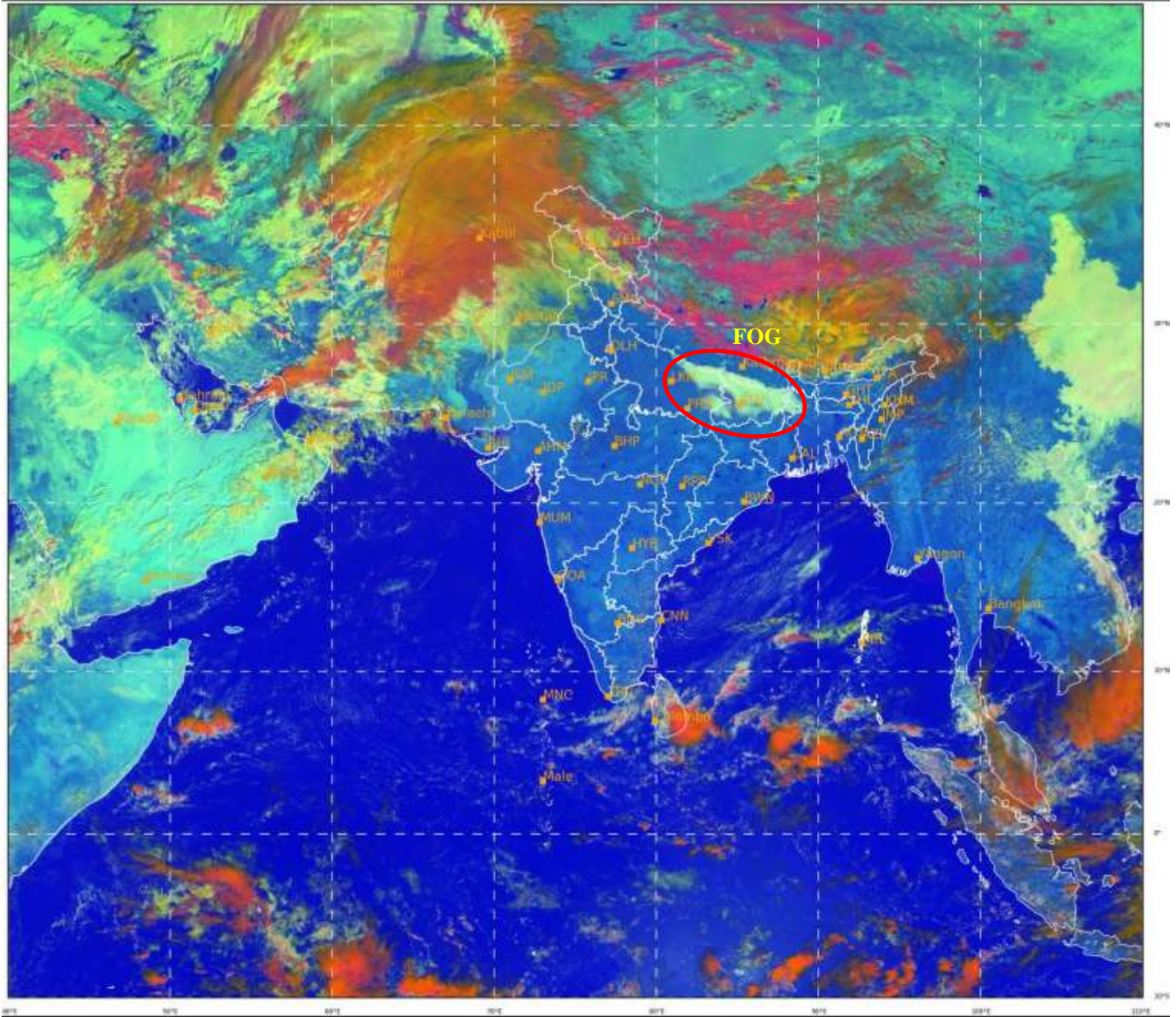
SAT : INSAT-3D IMG

03-01-2022/(0600 to 0627) GMT

Day Microphysics: VIS\_REFL (R), SWIR\_REFL (G), TIR1\_BT (B)

LIC Mercator

03-01-2022/(1130 to 1157) IST



IMD, DELHI



INSAT-3D 03-JAN-2022 06:00 WV IMG

WATER VAPOUR WIND

(1Kt = 0.5 m/s)

10 Kt

15 Kt

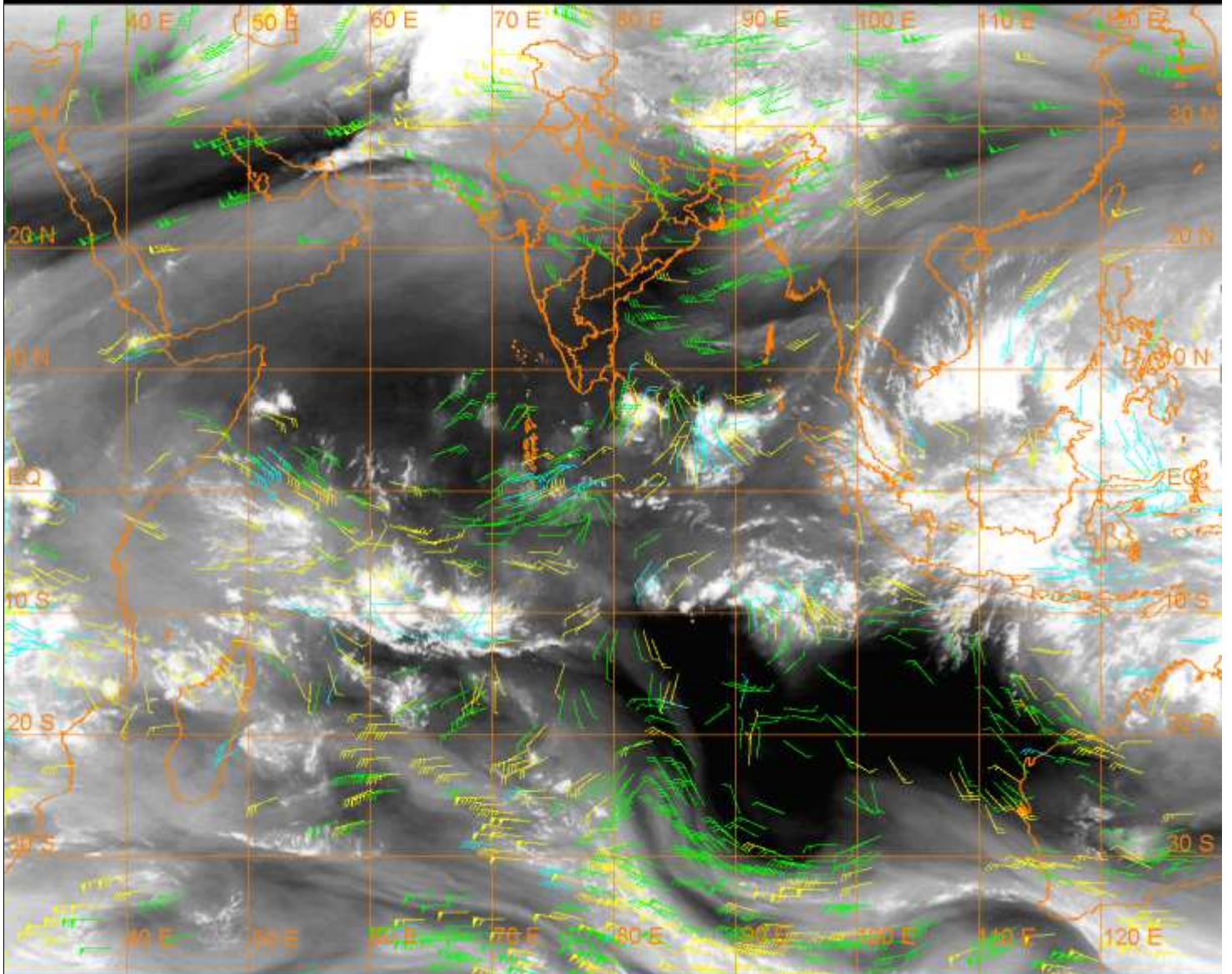
20 Kt

50 Kt

100-250 hPa

251-350 hPa

351-500 hPa



### CLOUDS DESCRIPTION WITHIN INDIA:-

#### NORTH:-

SCT TO BKN LOW/MED CLOUDS WITH EMBDD MOD TO INT CONVTN OVER LADAKH J&K AND WK TO MOD CONVTN OVER N HP PJB N UTRKND (.) ISOL LOW/MED CLOUDS OVER S HP S UTRKND HARY W UP (.)

#### EAST:-

SCT LOW/MED CLOUDS WITH EMBDD MOD TO INT CONVTN OVER SKM ARUPR NE ASSAM AND ISOL WK TO MOD CONVTN OVER NAGA MANI & SE BD (.) SCT LOW/MED CLOUDS OVER REST NE STATES (.)

#### WEST:-

SCT LOW/MED CLOUDS WITH EMBDD ISOL WK CONVTN OVER NW RAJ W MP (.) SCT LOW/MED CLOUDS OVER NE MP VID MRTHWD SOUTH MADHYA MAHA (.)

#### SOUTH:-

SCT LOW/MED CLOUDS WITH EMBDD ISOL WK TO MOD CONVTN OVER ANDAMAN AND NICOBAR ILS (.) SCT LOW/MED CLOUDS OVER S TLNGN RYLSM COTL AP SIK KER TN & LKSDP (.)

#### ARABIAN SEA:-

SCT LOW/MED CLOUDS WITH EMBDD ISOL WK TO MOD CONVTN OVER N ARSEA (.)

#### BAY OF BENGAL & ANDAMAN SEA:-

SCT LOW/MED CLOUDS WITH EMBDD MOD TO INT CONVTN OVER SOUTH PARTS OF S BAY ADJ EQUATORIAL INDIAN OCEAN AND SRILANKA (.)

**CLOUDS DESCRIPTION OUTSIDE INDIA:-**

SCT LOW/MED CLOUDS WITH EMBDD MOD TO INT CONVTN OVER SRILANKA PAK N NEPAL TIBET ADJ CHINA SUMATRA ADJ W COAST STR OF MALACCA MALAYSIA SOUTH CHINA SEA BORNEO JAVA ILS & SEA CELEBES ILS & SEA PHILIPPINES N MADAGASCAR N MOZAMBIQUE CHANNEL AND OVER INDIAN OCEAN BET EQ TO LAT 12.0S LONG 45.0E TO 100.0E (.)

TOO 03/1250EF=

NNNN

**LEGEND:-**

<b>REGION</b>	<b>NORTH</b>	<b>J&amp;K HP PJB HARY DLH UP UTRKND</b>
	<b>EAST</b>	<b>BHR JHRKND CHTGH ORS WB SKM NORTH- EAST STATES</b>
	<b>WEST</b>	<b>RAJ MP GUJ MAHA GOA</b>
	<b>SOUTH</b>	<b>TLNGN AP KRNTK KER TN LKSDP ANDAMAN &amp; NICOBAR ILS</b>

<b>CLOUD DISTRIBUTION</b>	<b>ISOL</b>	<b>ISOLATED (LESS THAN 25%)</b>
	<b>SCT</b>	<b>SCATTERED (25 TO 50%)</b>
	<b>BKN</b>	<b>BROKEN (51 TO 75%)</b>
	<b>SLD</b>	<b>SOLID (GREATER THAN 75%)</b>
<b>CLOUDS TOP TEMPERATURE</b>	<b>CTT</b>	<b>CLOUD TOP TEMPERATURE</b>
<b>CONVECTION</b>	<b>WK CONVTN</b>	<b>WEAK CONVECTION (CTT GREATER THAN -25°C)</b>
	<b>MOD CONVTN</b>	<b>MODERATE CONVECTION (CTT BETWEEN -25°C TO -40°C)</b>
	<b>INT CONVTN</b>	<b>INTENSE CONVECTION (CTT BETWEEN -41°C TO -70°C)</b>
	<b>V INT CONVTN</b>	<b>VERY INTENSE CONVECTION (CTT LESS THAN -70°C)</b>
<b>METEOROLOGICAL SUB-DIVISIONS, STATES &amp; UNION TERRITORIES</b>	<b>ARUPR</b>	<b>ARUNACHAL PRADESH</b>
	<b>BHR</b>	<b>BIHAR</b>
	<b>CHTGH</b>	<b>CHHATTISGARH</b>
	<b>COTL AP</b>	<b>COASTAL ANDHRA PRADESH</b>
	<b>COTL KRNTK</b>	<b>COASTAL KARNATAKA</b>
	<b>COTL ORS</b>	<b>COASTAL ORISSA</b>
	<b>GUJ</b>	<b>GUJARAT</b>
	<b>GWB</b>	<b>GANGETIC WEST BENGAL</b>
	<b>HARY</b>	<b>HARYANA</b>
	<b>DLH</b>	<b>DELHI</b>
	<b>HP</b>	<b>HIMACHAL PRADESH</b>
	<b>J&amp;K</b>	<b>JAMMU AND KASHMIR</b>
	<b>JHRKND</b>	<b>JHARKHAND</b>
	<b>KER</b>	<b>KERALA</b>

	<b>KKN</b>	<b>KONKAN</b>
	<b>LKSDP</b>	<b>LAKSHADWEEP</b>
	<b>M MAHA</b>	<b>MADHYA MAHARASHTRA</b>
	<b>MAHA</b>	<b>MAHARASHTRA</b>
	<b>MANI</b>	<b>MANIPUR</b>
	<b>MEGHA</b>	<b>MEGHALAYA</b>
	<b>MIZO</b>	<b>MIZORAM</b>
	<b>MP</b>	<b>MADHYA PRADESH</b>
	<b>MRTHWD</b>	<b>MARATHWADA</b>
	<b>NAGA</b>	<b>NAGALAND</b>
	<b>N COTL AP</b>	<b>NORTH COASTAL ANDHRA PRADESH</b>
	<b>NIK</b>	<b>NORTH INTERIOR KARNATAKA</b>
	<b>ORS</b>	<b>ORISSA</b>
	<b>PJB</b>	<b>PUNJAB</b>
	<b>RAJ</b>	<b>RAJASTHAN</b>
	<b>RYLSM</b>	<b>RAYALASEEMA</b>
	<b>SAU &amp; KUTCH</b>	<b>SAURASHTRA &amp; KUTCH</b>
	<b>SHWB</b>	<b>SUB-HIMALAYAN WEST BENGAL</b>
	<b>SIK</b>	<b>SOUTH INTERIOR KARNATAKA</b>
	<b>SKM</b>	<b>SIKKIM</b>
	<b>TLNGN</b>	<b>TELANGANA</b>
	<b>TN</b>	<b>TAMIL NADU</b>
	<b>TRP</b>	<b>TRIPURA</b>
	<b>UP</b>	<b>UTTAR PRADESH</b>
	<b>UTRKN</b>	<b>UTTARAKHAND</b>
	<b>VID</b>	<b>VIDHARBHA</b>
	<b>SHWB</b>	<b>SUB HIMALAYAN WEST BENGAL</b>
	<b>GWB</b>	<b>GANGETIC WEST BENGAL</b>
	<b>ARSEA</b>	<b>ARABIAN SEA</b>
	<b>ILS</b>	<b>ISLANDS</b>
<b>MISCELLANEOUS</b>	<b>ASSW</b>	<b>IN ASSOCIATION WITH</b>
	<b>ASSTD</b>	<b>ASSOCIATED</b>
	<b>LLC</b>	<b>LOW LEVEL CIRCULATION</b>
	<b>EMBDD</b>	<b>EMBEDDED</b>
	<b>N/HOOD</b>	<b>NEIGHBOURHOOD</b>
	<b>EXT</b>	<b>EXTREME</b>