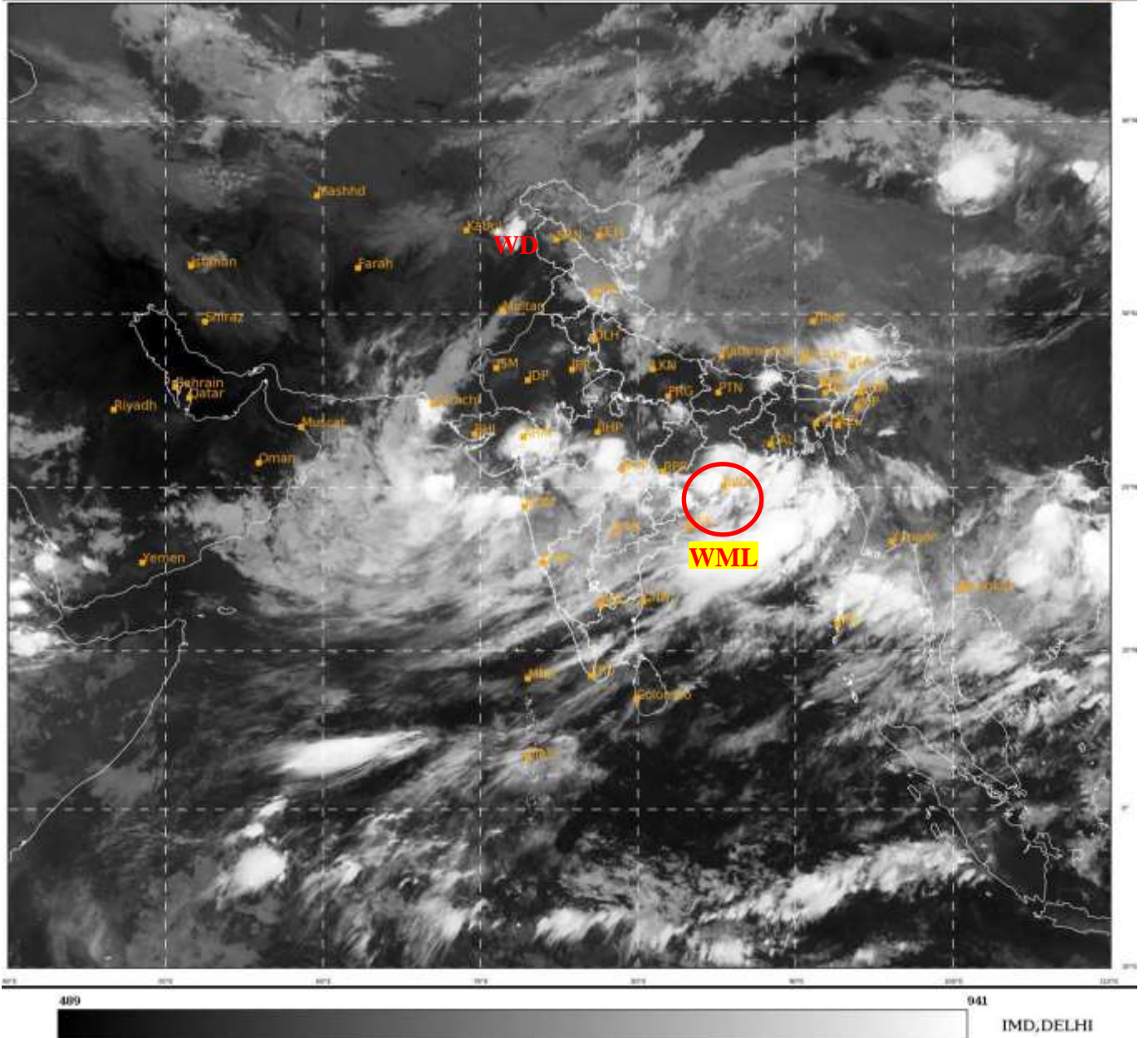




**SATELLITE BULLETIN BASED ON SATELLITE
IMAGERIES AND PRODUCTS**
09.08.2022 TIME 0000 UTC

SAT : INSAT-3D IMG
IMG TIR1 10.8 um
LIC Mercator

09-08-2022/(0000 to 0026) GMT
09-08-2022/(0530 to 0556) IST



TCIN50 DEMS 090000

SATELLITE BULLETIN BASED ON INSAT-3D PIC OF 090000 UTC (.)

REGION COVERED BETWEEN LAT 50.0°N TO 30.0°S AND LONG 40.0°E TO 125.0°E (.)

SALIENT FEATURES:-

VORTEX (WML) OVER COASTAL ORISSA ADJ NORTH COASTAL AP & N/HOOD:-

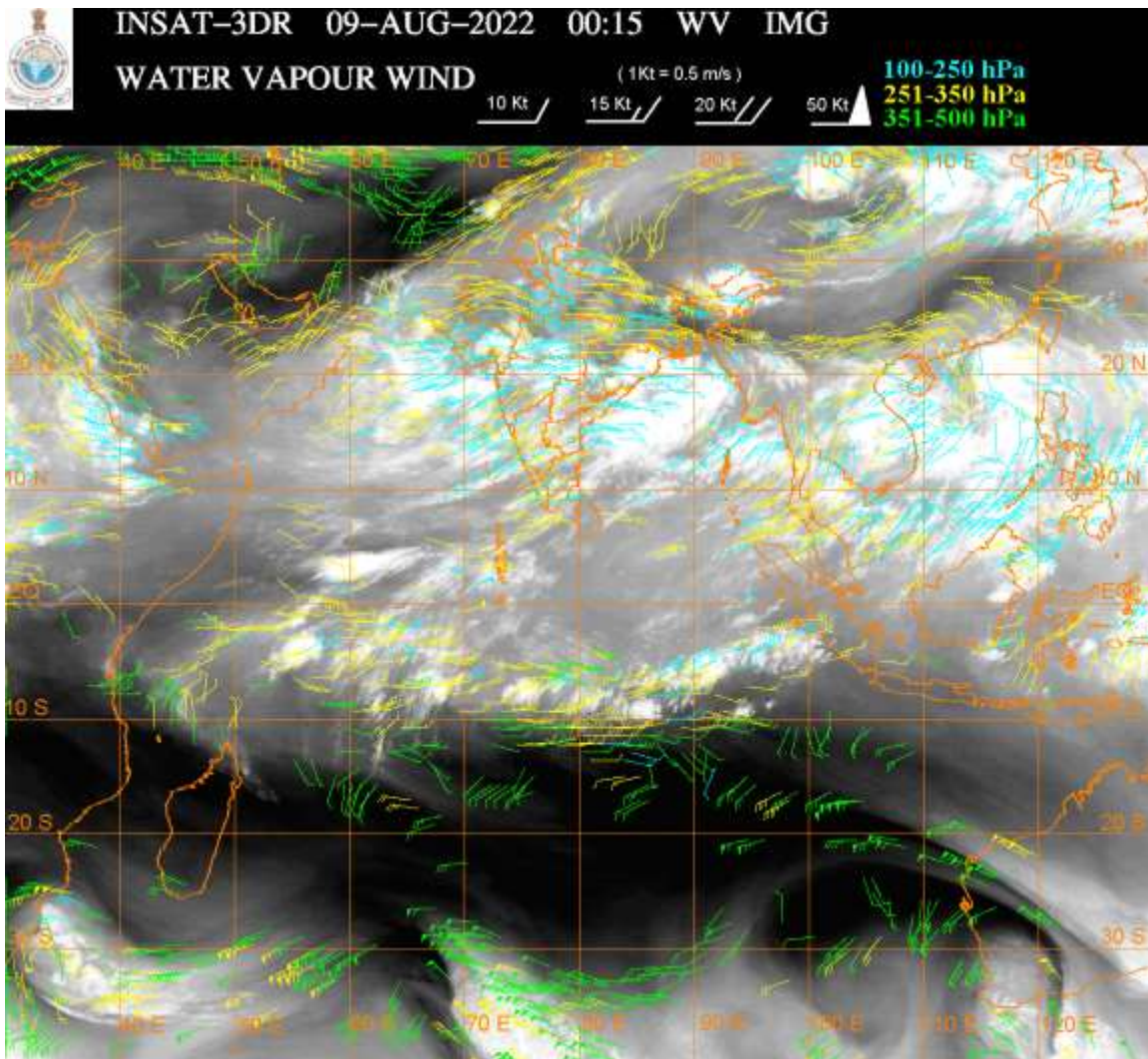
VORTEX (WML) OVER COTL ORS ADJ N COTL AP & N/HOOD (.) ASSD SCT TO BKN LOW/MED CLOUDS WITH EMBDD INT TO V INT CONVTN OVER ORS N COTL AP & N/HOOD (.) MINIMUM CTT MINUS 93 DEG C (.)

WESTERN DISTURBANCE (WD):-

SCT MULTILAYERED CLOUDS OVER N PAK J&K LADAKH PJB HP UTRKND TIBET ADJ CHINA IN ASSW WD OVER THE AREA (.)

INTENSE CONVECTIVE CLOUDS :-

INTENSE CONVECTIVE CLOUDS OBSERVED OVER S JHRKND S CHTGH ORS S GWB ARUPR EXT SE RAJ E GUJ S MP VID (.)



CLOUDS DESCRIPTION WITHIN INDIA:-

NORTH:-

SCT LOW/MED CLOUDS WITH EMBDD MOD TO INT CONVTN OVER E LADAKH S HP UTRKND SE UP (.) SCT LOW/MED CLOUDS WITH EMBDD WK TO MOD CONVTN OVER J&K REST LADAKH N HP N PJB E HARY REST UP (.) SCT LOW/MED CLOUDS OVER SE PJB W HARY DLH (.)

EAST:-

SCT TO BKN LOW/MED CLOUDS WITH EMBDD INT TO V INT CONVTN OVER S JHRKND (MINIMUM CTT MINUS 75 DEG C) S CHTGH ORS S GWB W ARUPR (MINIMUM CTT MINUS 93 DEG C) (.) SCT LOW/MED CLOUDS WITH EMBDD MOD TO INT CONVTN OVER NE BHR ADJ SHWB ASSAM E ARUPR NAGA (.) SCT LOW/MED CLOUDS WITH EMBDD WK TO MOD CONVTN OVER NW BHR NW JHRKND N CHTGH SKM REST NE STATES (.) SCT LOW/MED CLOUDS OVER S BHR REST JHRKND N GWB (.)

WEST:-

SCT TO BKN LOW/MED CLOUDS WITH EMBDD INT TO V INT CONVTN OVER EXT SE RAJ E GUJ S MP VID (MINIMUM CTT MINUS 93 DEG C) (.) SCT TO BKN LOW/MED CLOUDS WITH EMBDD MOD TO INT CONVTN OVER N MP MRTHWD MADHYA MAHA KKN GOA (.) SCT LOW/MED CLOUDS WITH EMBDD WK TO MOD CONVTN OVER REST RAJ W GUJ (.)

SOUTH:-

SCT TO BKN LOW/MED CLOUDS WITH EMBDD MOD TO INT CONVTN OVER KRNTK TLNGN RYLSM COTL AP KER TN ANDAMAN ILS AND WK TO MOD CONVTN OVER LKSDP ILS NICOBAR ILS (.)

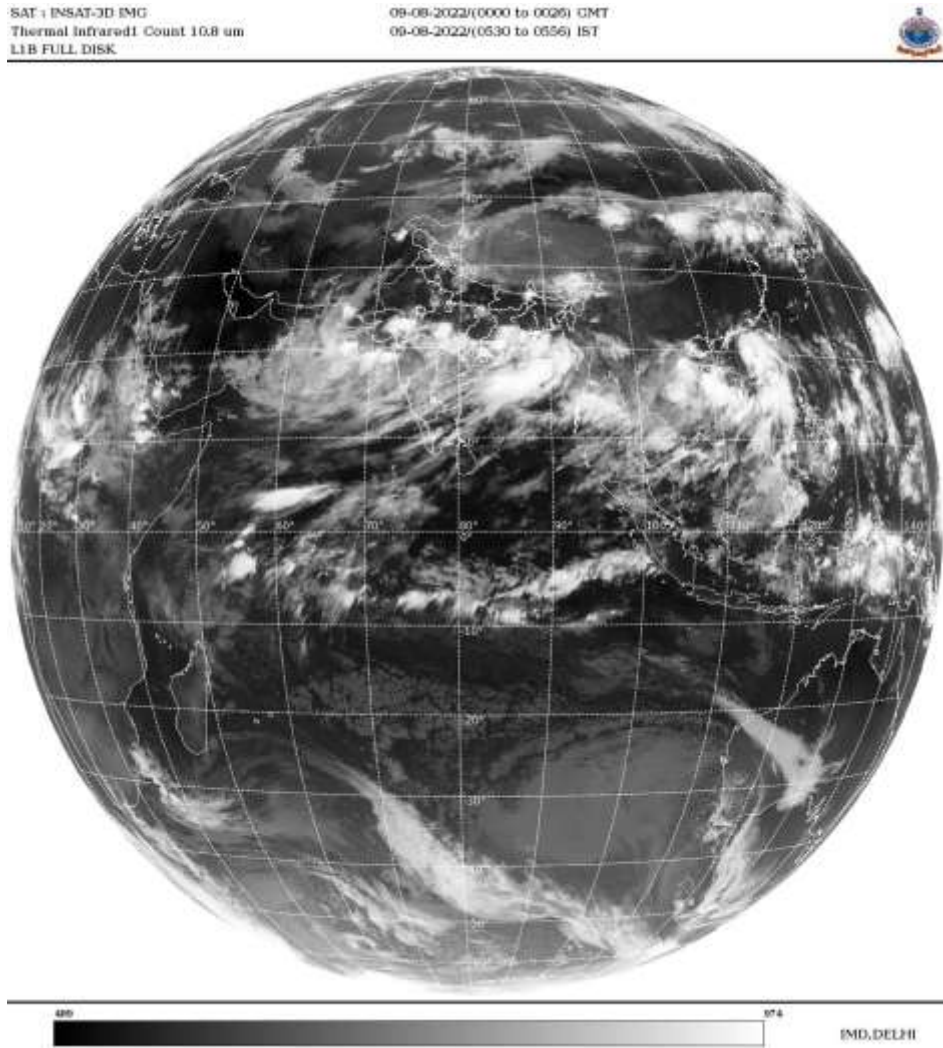
ARABIAN SEA:-

SCT TO BKN LOW/MED CLOUDS WITH EMBDD INT TO V INT CONVTN OVER NE & EC ARSEA (.) SCT LOW/MED CLOUDS WITH EMBDD MOD TO INT CONVTN OVER NW ARSEA GULF OF KUTCH GULF OF CAMBAY WC & SE ARSEA LKSDP ILS AREA AND WK TO MOD CONVTN OVER SW ARSEA COMORIN AREA (.)

BAY OF BENGAL & ANDAMAN SEA:-

SCT TO BKN LOW/MED CLOUDS WITH EMBDD INT TO V INT CONVTN OVER NORTH BAY CENTRAL BAY N ANDAMAN SEA AND MOD TO INT CONVTN OVER SOUTH BAY S ANDAMAN SEA (.)

CLOUDS DESCRIPTION OUTSIDE INDIA:-



SCT LOW/MED CLOUDS WITH EMBDD MOD TO INT CONVTN OVER SRI LANKA PALK STR GULF OF MANNAR MALDIVES PAK NEPAL BHUTAN TIBET CHINA YELLOW SEA E CHINA SEA TAIWAN MYANMAR THAILAND GULF OF THAILAND CAMBODIA LAOS VIETNAM GULF OF TONKIN HAINAN SUMATRA STR OF MALACCA MALAYSIA BORNEO SOUTH CHINA SEA JAVA SEA CELEBES ILS & SEA PHILIPPINES SULU SEA AND OVER INDIAN OCEAN BET LAT 5.0N TO 10.0S LONG 52.5E TO 100.0E (.)

TOO 09/0710 HRS IST=

NNNN

LEGEND:-

REGION	NORTH	J&K HP PJB HARY DLH UP UTRKND
	EAST	BHR JHRKND CHTGH OR WB SKM NORTH- EAST STATES
	WEST	RAJ MP GUJ MAHA GOA
	SOUTH	TLNGN AP KRNTK KER TN LKSDP ANDAMAN & NICOBAR ILS

CLOUD DISTRIBUTION	ISOL	ISOLATED (LESS THAN 25%)	
	SCT	SCATTERED (25 TO 50%)	
	BKN	BROKEN (51 TO 75%)	
	SLD	SOLID (GREATER THAN 75%)	
CLOUDS TOP TEMPERATURE	CTT	CLOUD TOP TEMPERATURE	
CONVECTION	WK CONVTN	WEAK CONVECTION (CTT GREATER THAN -25°C)	
	MOD CONVTN	MODERATE CONVECTION (CTT BETWEEN -25°C TO -40°C)	
	INT CONVTN	INTENSE CONVECTION (CTT BETWEEN -41°C TO -70°C)	
	V INT CONVTN	VERY INTENSE CONVECTION (CTT LESS THAN -70°C)	
METEOROLOGICAL SUB-DIVISIONS, STATES & UNION TERRITORIES	ARUPR	ARUNACHAL PRADESH	
	BHR	BIHAR	
	CHTGH	CHHATTISGARH	
	COTL AP	COASTAL ANDHRA PRADESH	
	COTL KRNTK	COASTAL KARNATAKA	
	COTL ORS	COASTAL ORISSA	
	GUJ	GUJARAT	
	GWB	GANGETIC WEST BENGAL	
	HARY	HARYANA	
	DLH	DELHI	
	HP	HIMACHAL PRADESH	
	J&K	JAMMU AND KASHMIR	
	JHRKND	JHARKHAND	
	KER	KERALA	
	KKN	KONKAN	
	LKSDP	LAKSHADWEEP	
	M MAHA	MADHYA MAHARASHTRA	
	MAHA	MAHARASHTRA	
	MANI	MANIPUR	
	MEGHA	MEGHALAYA	
	MIZO	MIZORAM	
	MP	MADHYA PRADESH	
		MRTHWD	MARATHWADA
		NAGA	NAGALAND
N COTL AP		NORTH COASTAL ANDHRA PRADESH	
NIK		NORTH INTERIOR KARNATAKA	
ORS		ORISSA	
PJB		PUNJAB	
RAJ		RAJASTHAN	
RYLSM		RAYALASEEMA	
SAU & KUTCH		SAURASHTRA & KUTCH	
SHWB		SUB-HIMALAYAN WEST BENGAL	
SIK		SOUTH INTERIOR KARNATAKA	
SKM		SIKKIM	

	TLNGN	TELANGANA
	TN	TAMIL NADU
	TRP	TRIPURA
	UP	UTTAR PRADESH
	UTRKND	UTTARAKHAND
	VID	VIDHARBHA
	SHWB	SUB HIMALAYAN WEST BENGAL
	GWB	GANGETIC WEST BENGAL
	ARSEA	ARABIAN SEA
	ILS	ISLANDS
MISCELLANEOUS	ASSW	IN ASSOCIATION WITH
	ASSTD	ASSOCIATED
	LLC	LOW LEVEL CIRCULATION
	EMBDD	EMBEDDED
	N/HOOD	NEIGHBOURHOOD
	EXT	EXTREME