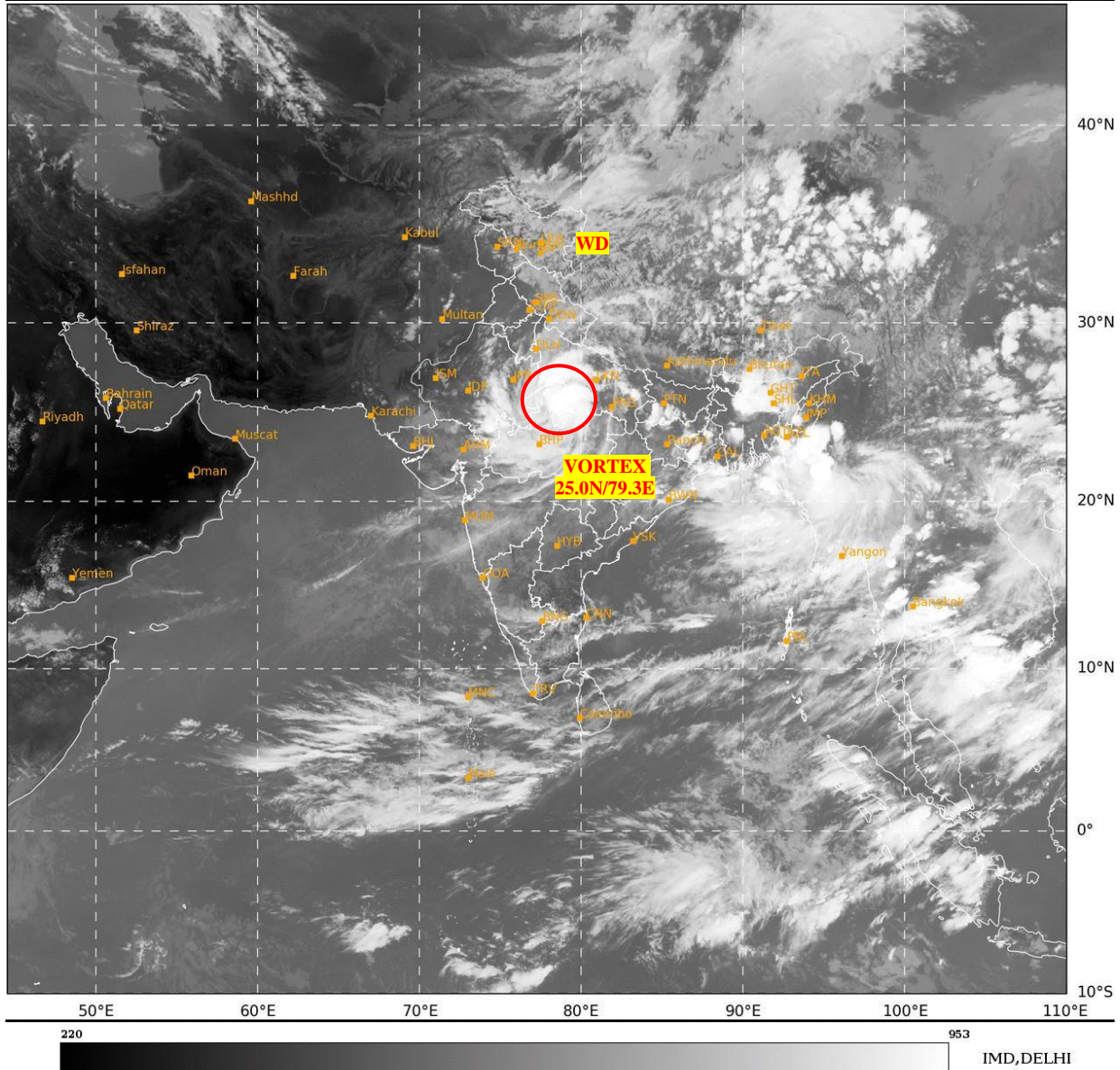




**SATELLITE BULLETIN BASED ON SATELLITE  
IMAGERIES AND PRODUCTS**  
**11.09.2024 TIME 1500 UTC**

SAT : INSAT-3DR IMG  
IMG\_TIR1 10.8 um  
LIC Mercator

11-09-2024/(0915 to 0942) GMT  
11-09-2024/(1445 to 1512) IST



TCIN50 DEMS 111500

SATELLITE BULLETIN BASED ON INSAT-3DR PIC OF 111445 UTC (.)

REGION COVERED BETWEEN LAT 50.0°N TO 35.0°S AND LONG 40.0°E TO 125.0°E (.)

**SALIENT FEATURES:-**

**VORTEX OVER NORTH MP ADJ SOUTH UP & N/HOOD:-**

VORTEX OVER NORTH MP ADJ SOUTH UP & N/HOOD CENTERED WITHIN HALF A DEGREE OF **25.0N / 79.3E** (.) CENTRE IS NOT CLEARLY DEFINED IN SATELLITE IMAGERY (.) ASSTD SCT TO BKN LOW/MED CLOUDS WITH EMBDD INT TO V INT CONVTN OVER E RAJ MP UP (MINIMUM **CTT MINUS 93 DEG CEL**) (.)

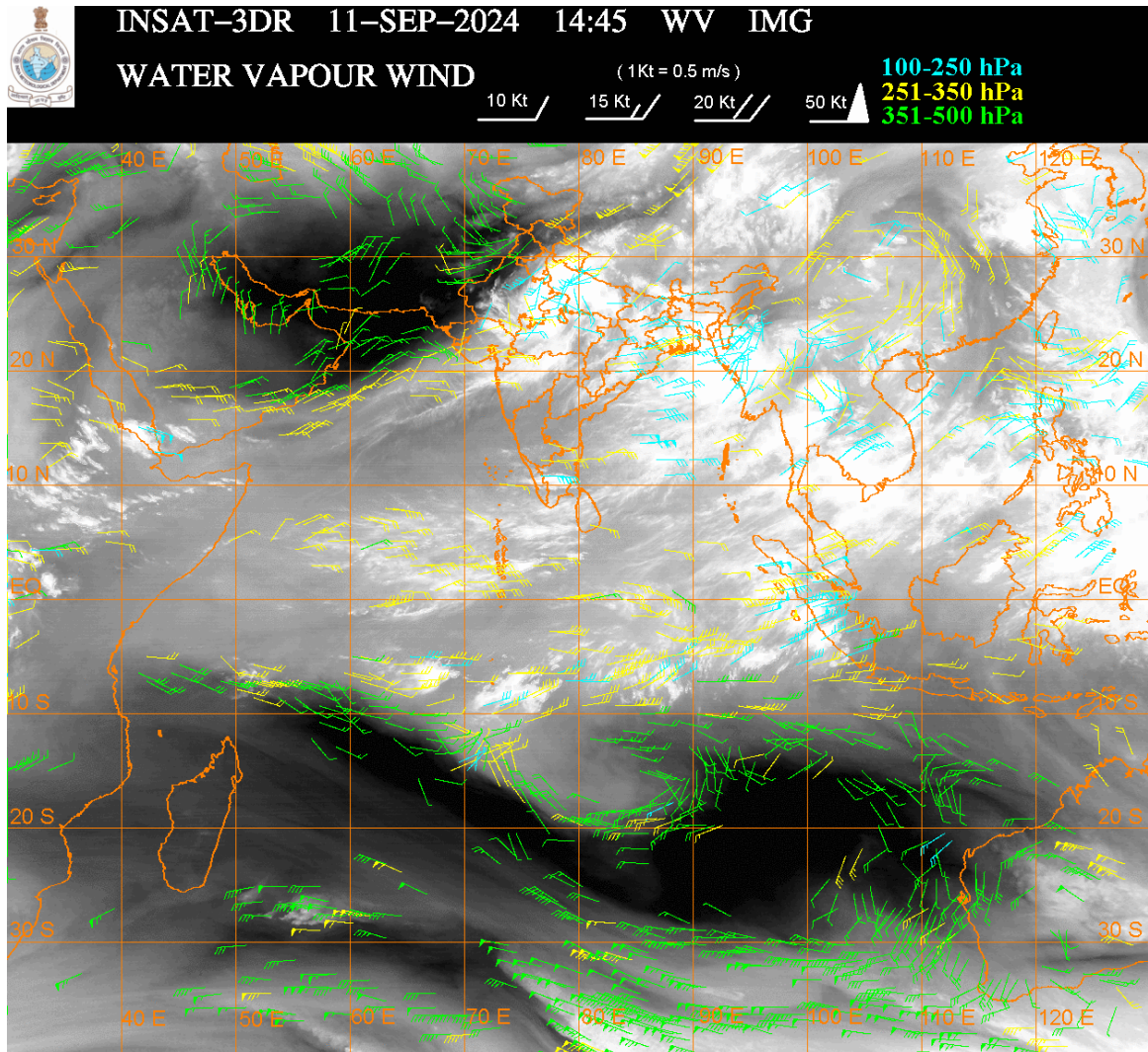
**WESTERN DISTURBANCE (WD):-**

SCT MULTILAYERED CLOUDS OVER N PAK LADAKH J&K HP UTRKND TIBET ADJ CHINA IN ASSW **WD** OVER THE AREA (.)

**CONVECTIVE / THUNDERSTORM ACTIVITY:-**

INTENSE TO VERY INTENSE CONVECTIVE / THUNDERSTORM ACTIVITY OBSERVED OVER DLH S HARY EAST RAJ MP UP BHR ORS N COTL AP S GWB SHWB MIZO TRP BD (MINIMUM **CTT MINUS 80-93 DEG CEL**) (.)

**MODERATE TO INTENSE CONVECTIVE / THUNDERSTORM ACTIVITY OBSERVED OVER UTRKND N HARY W RAJ E GUJ VID NORTH MADHYA MAHA N CHTGH JHRKND SKM MEGHA ASSAM CENTRAL TN (MINIMUM CTT MINUS 50-70 DEG CEL) (.)**



**CLOUDS DESCRIPTION WITHIN INDIA:-**

**NORTH:-**

**SCT TO BKN LOW/MED CLOUDS WITH EMBDD INT TO V INT CONVTN OVER S HARY DLH UP SE UTRKND (.) SCT LOW/MED CLOUDS WITH EMBDD MOD TO INT CONVTN OVER RSET UTRKND N HARY AND WK TO MOD CONVTN OVER LADAKH J&K HP S PJB (.) SCT LOW/MED CLOUDS OVER N PJB (.)**

**EAST:-**

**SCT TO BKN LOW/MED CLOUDS WITH EMBDD INT TO V INT CONVTN OVER BHR ORS S GWB SHWB MANI MIZO TRP & BD (.) SCT LOW/MED CLOUDS WITH EMBDD MOD TO INT CONVTN OVER N CHTGH SKM SE ASSAM MEGHA AND WK TO MOD CONVTN OVER S CHTGH REST NE STATES (.)**

**WEST:-**

**SCT TO BKN LOW/MED CLOUDS WITH EMBDD INT TO V INT CONVTN OVER E RAJ MP NE GUJ (.) SCT LOW/MED CLOUDS WITH EMBDD MOD TO INT CONVTN OVER W RAJ VID NORTH MADHYA MAHA AND WK TO MOD CONVTN OVER REST GUJ REST MAHA & GOA (.)**

**SOUTH:-**

**SCT LOW/MED CLOUDS WITH EMBDD INT TO V INT CONVTN OVER N COTL AP C TN (.) SCT LOW/MED CLOUDS WITH EMBDD MOD TO INT CONVTN OVER N KER N TN ANDAMAN ILS AND ISOL WK TO MOD CONVTN OVER KRNTK TLNGN RYLSM S COTL AP S TN LKSDP ILS & NICOBAR ILS (.)**

**ARABIAN SEA:-**

**SCT LOW/MED CLOUDS WITH EMBDD MOD TO INT CONVTN OVER SOUTH ARSEA MALDIVES & COMORIN AREA (.) SCT LOW/MED CLOUDS WITH EMBDD ISOL WK TO MOD CONVTN OVER CENTRAL ARSEA & GULF OF CAMBAY (.)**

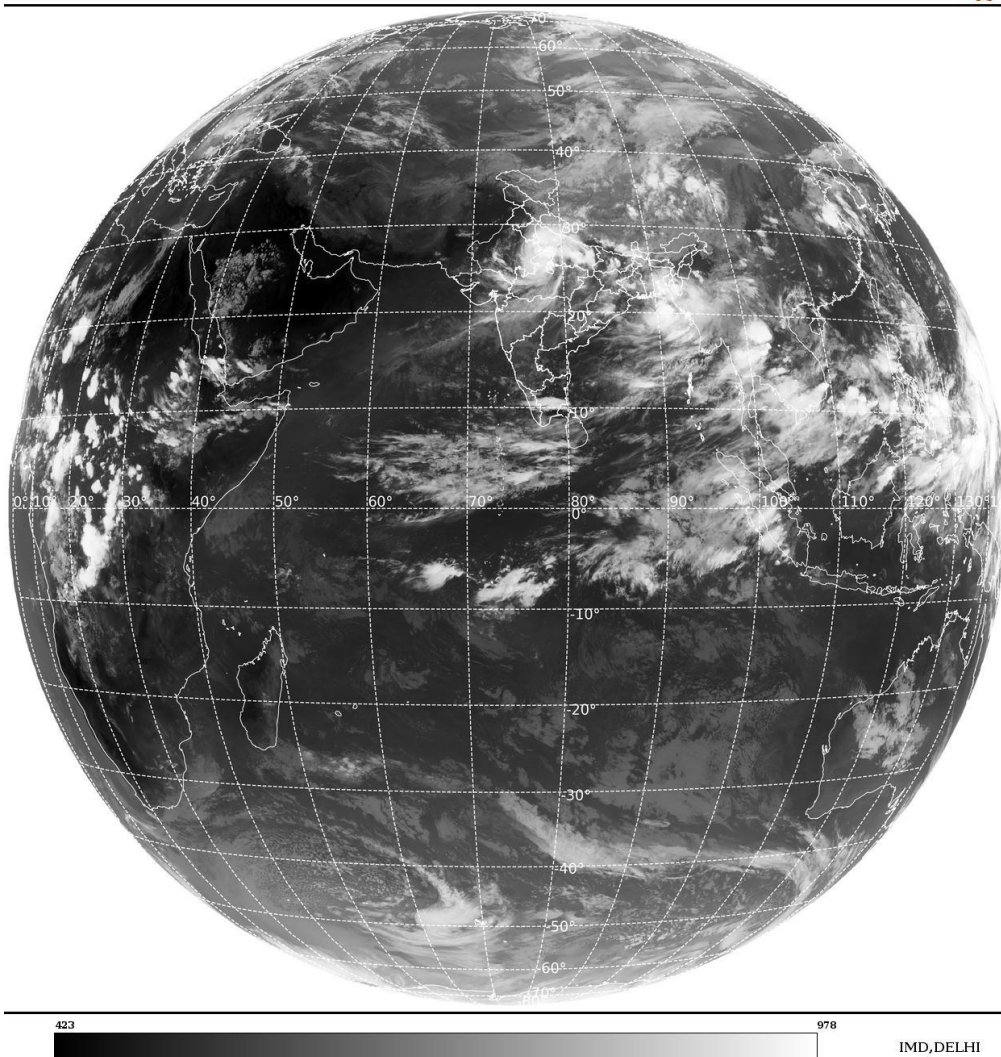
**BAY OF BENGAL & ANDAMAN SEA:-**

**SCT TO BKN LOW/MED CLOUDS WITH EMBDD INT TO V INT CONVTN OVER N BAY ARAKAN COAST ADJ EC WAY TENASSERIM COAST (.) SCT LOW/MED CLOUDS WITH EMBDD MOD TO INT CONVTN OVER REST BAY ANDAMAN SEA & GULF OF MARTABAN (.)**

**CLOUDS DESCRIPTION OUTSIDE INDIA:-**

SAT : INSAT-3DR IMG  
Thermal Infrared1 Count 10.8 um  
LIB FULL DISK

11-09-2024/(1445 to 1512) GMT  
11-09-2024/(2015 to 2042) IST



**SCT LOW/MED CLOUDS WITH EMBDD MOD TO INT CONVTN OVER SRI LANKA PALK STR GULF OF MANNAR MALDIVES PAK NEPAL BHUTAN TIBET CHINA MYANMAR THAILAND GULF OF THAILAND CAMBODIA LAOS VIETNAM GULF OF TONKIN HAINAN TAIWAN SUMATRA STR OF MALACCA MALAYSIA BORNEO SOUTH CHINA SEA CELEBES SEA PHILIPPINES EAST CHINA SEA AND OVER INDIAN OCEAN BET LAT 5.0N TO 10.0S LONG 60.0E TO 100.0E (.)**

**TOO 11/2130 HRS IST=**

**NNNN**

**LEGEND:-**

<b>REGION</b>	<b>NORTH</b>	<b>J&amp;K HP PJB HARY DLH UP UTRKND</b>
	<b>EAST</b>	<b>BHR JHRKND CHTGH OR WB SKM NORTH- EAST STATES</b>
	<b>WEST</b>	<b>RAJ MP GUJ MAHA GOA</b>
	<b>SOUTH</b>	<b>TLNGN AP KRNTK KER TN LKSDP ANDAMAN &amp; NICOBAR ILS</b>
	<b>ISOL</b>	<b>ISOLATED (LESS THAN 25%)</b>
	<b>SCT</b>	<b>SCATTERED (25 TO 50%)</b>

<b>CLOUD DISTRIBUTION</b>	<b>BKN</b>	<b>BROKEN (51 TO 75%)</b>	
	<b>SLD</b>	<b>SOLID (GREATER THAN 75%)</b>	
<b>CLOUDS TOP TEMPERATURE</b>	<b>CTT</b>	<b>CLOUD TOP TEMPERATURE</b>	
<b>CONVECTION</b>	<b>WK CONVTN</b>	<b>WEAK CONVECTION (CTT GREATER THAN -25°C)</b>	
	<b>MOD CONVTN</b>	<b>MODERATE CONVECTION (CTT BETWEEN -25°C TO -40°C)</b>	
	<b>INT CONVTN</b>	<b>INTENSE CONVECTION (CTT BETWEEN -41°C TO -70°C)</b>	
	<b>V INT CONVTN</b>	<b>VERY INTENSE CONVECTION (CTT LESS THAN -70°C)</b>	
<b>METEOROLOGICAL SUB- DIVISIONS, STATES &amp; UNION TERITORIES</b>	<b>ARUPR</b>	<b>ARUNACHAL PRADESH</b>	
	<b>BHR</b>	<b>BIHAR</b>	
	<b>CHTGH</b>	<b>CHHATTISGARH</b>	
	<b>COTL AP</b>	<b>COASTAL ANDHRA PRADESH</b>	
	<b>COTL KRNTK</b>	<b>COASTAL KARNATAKA</b>	
	<b>COTL ORS</b>	<b>COASTAL ORISSA</b>	
	<b>GUJ</b>	<b>GUJARAT</b>	
	<b>GWB</b>	<b>GANGETIC WEST BENGAL</b>	
	<b>HARY</b>	<b>HARYANA</b>	
	<b>DLH</b>	<b>DELHI</b>	
	<b>HP</b>	<b>HIMACHAL PRADESH</b>	
	<b>J&amp;K</b>	<b>JAMMU AND KASHMIR</b>	
	<b>JHRKND</b>	<b>JHARKHAND</b>	
	<b>KER</b>	<b>KERALA</b>	
	<b>KKN</b>	<b>KONKAN</b>	
	<b>LKSDP</b>	<b>LAKSHADWEEP</b>	
	<b>M MAHA</b>	<b>MADHYA MAHARASHTRA</b>	
	<b>MAHA</b>	<b>MAHARASHTRA</b>	
	<b>MANI</b>	<b>MANIPUR</b>	
	<b>MEGHA</b>	<b>MEGHALAYA</b>	
	<b>MIZO</b>	<b>MIZORAM</b>	
	<b>MP</b>	<b>MADHYA PRADESH</b>	
		<b>MRTHWD</b>	<b>MARATHWADA</b>
		<b>NAGA</b>	<b>NAGALAND</b>
<b>N COTL AP</b>		<b>NORTH COASTAL ANDHRA PRADESH</b>	
<b>NIK</b>		<b>NORTH INTERIOR KARNATAKA</b>	
<b>ORS</b>		<b>ORISSA</b>	
<b>PJB</b>		<b>PUNJAB</b>	
<b>RAJ</b>		<b>RAJASTHAN</b>	
<b>RYLSM</b>		<b>RAYALASEEMA</b>	
<b>SAU &amp; KUTCH</b>		<b>SAURASHTRA &amp; KUTCH</b>	
<b>SHWB</b>		<b>SUB-HIMALAYAN WEST BENGAL</b>	
<b>SIK</b>		<b>SOUTH INTERIOR KARNATAKA</b>	
<b>SKM</b>		<b>SIKKIM</b>	
<b>TLNGN</b>		<b>TELANGANA</b>	
<b>TN</b>		<b>TAMIL NADU</b>	

	<b>TRP</b>	<b>TRIPURA</b>
	<b>UP</b>	<b>UTTAR PRADESH</b>
	<b>UTRKND</b>	<b>UTTARAKHAND</b>
	<b>VID</b>	<b>VIDHARBHA</b>
	<b>SHWB</b>	<b>SUB HIMALAYAN WEST BENGAL</b>
	<b>GWB</b>	<b>GANGETIC WEST BENGAL</b>
	<b>ARSEA</b>	<b>ARABIAN SEA</b>
	<b>ILS</b>	<b>ISLANDS</b>
<b>MISCELLANEOUS</b>	<b>ASSW</b>	<b>IN ASSOCIATION WITH</b>
	<b>ASSTD</b>	<b>ASSOCIATED</b>
	<b>LLC</b>	<b>LOW LEVEL CIRCULATION</b>
	<b>EMBDD</b>	<b>EMBEDDED</b>
	<b>N/HOOD</b>	<b>NEIGHBOURHOOD</b>
	<b>EXT</b>	<b>EXTREME</b>