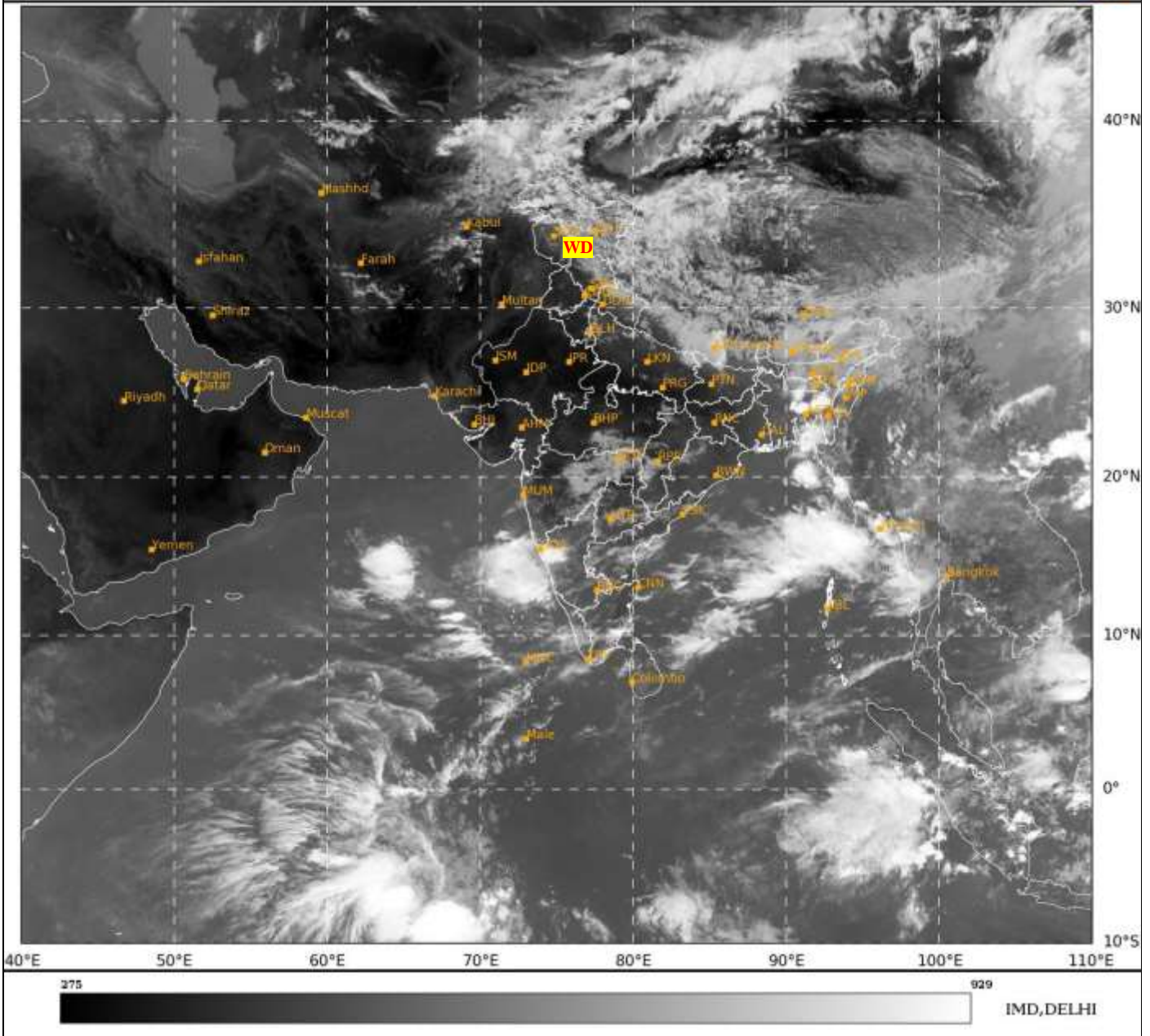




**SATELLITE BULLETIN BASED ON SATELLITE
IMAGERIES AND PRODUCTS**
04.06.2024 TIME 0600 UTC

SAT : INSAT-3D IMG
IMG_TIR1 10.8 um
LIC Mercator

04-06-2024/(0600 to 0626) GMT
04-06-2024/(1130 to 1156) IST



TCIN50 DEMS 040600

SATELLITE BULLETIN BASED ON INSAT-3D PIC OF 040600 UTC (.)

REGION COVERED BETWEEN LAT 50.0°N TO 35.0°S AND LONG 30.0°E TO 125.0°E (.)

SALIENT FEATURES:-

WESTERN DISTURBANCE:-

SCT MULTILAYERED CLOUDS OVER J&K LADAKH HP UTRKND NEPAL TIBET ADJ CHINA IN ASSW **WD** OVER THE AREA (.)

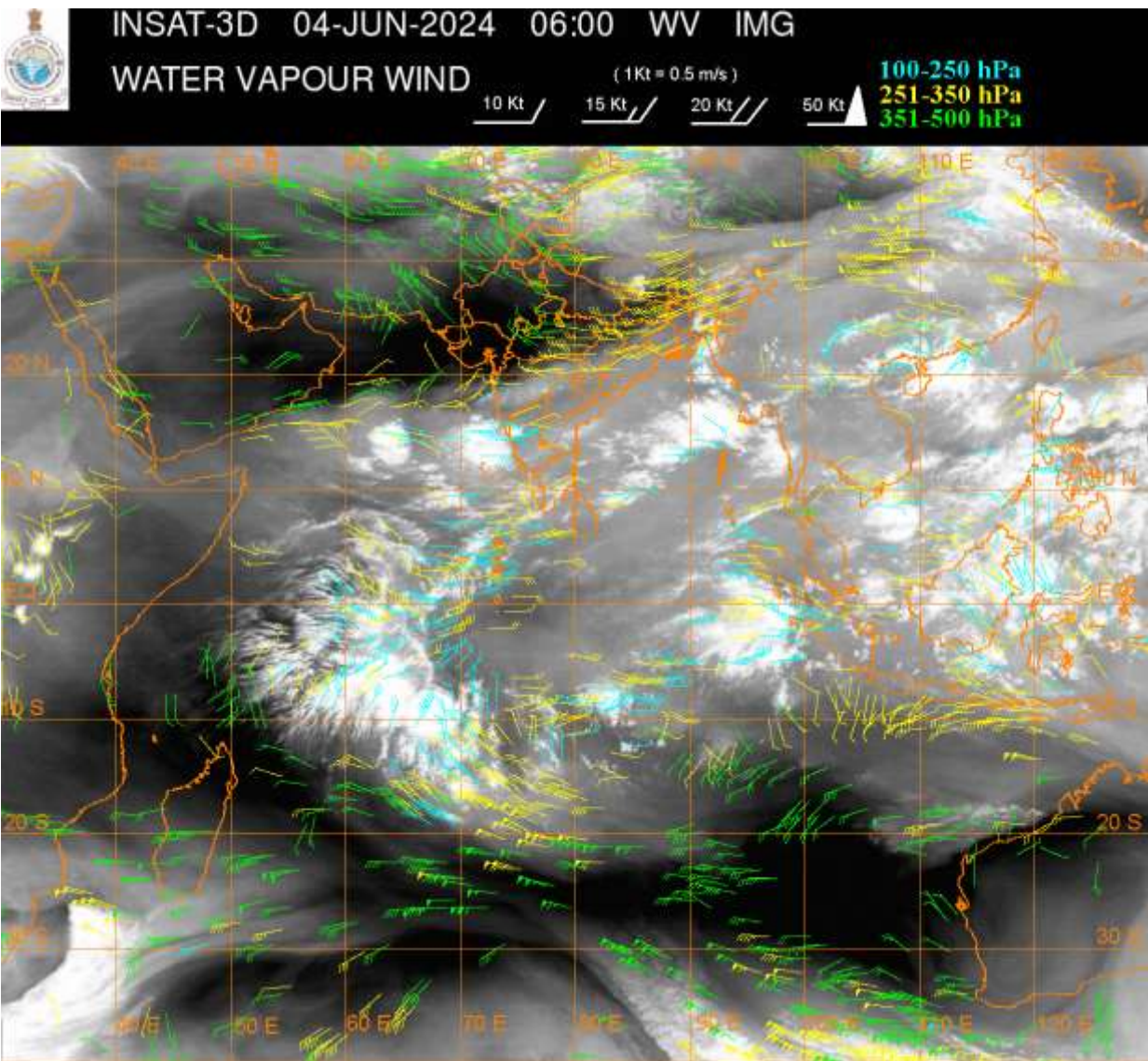
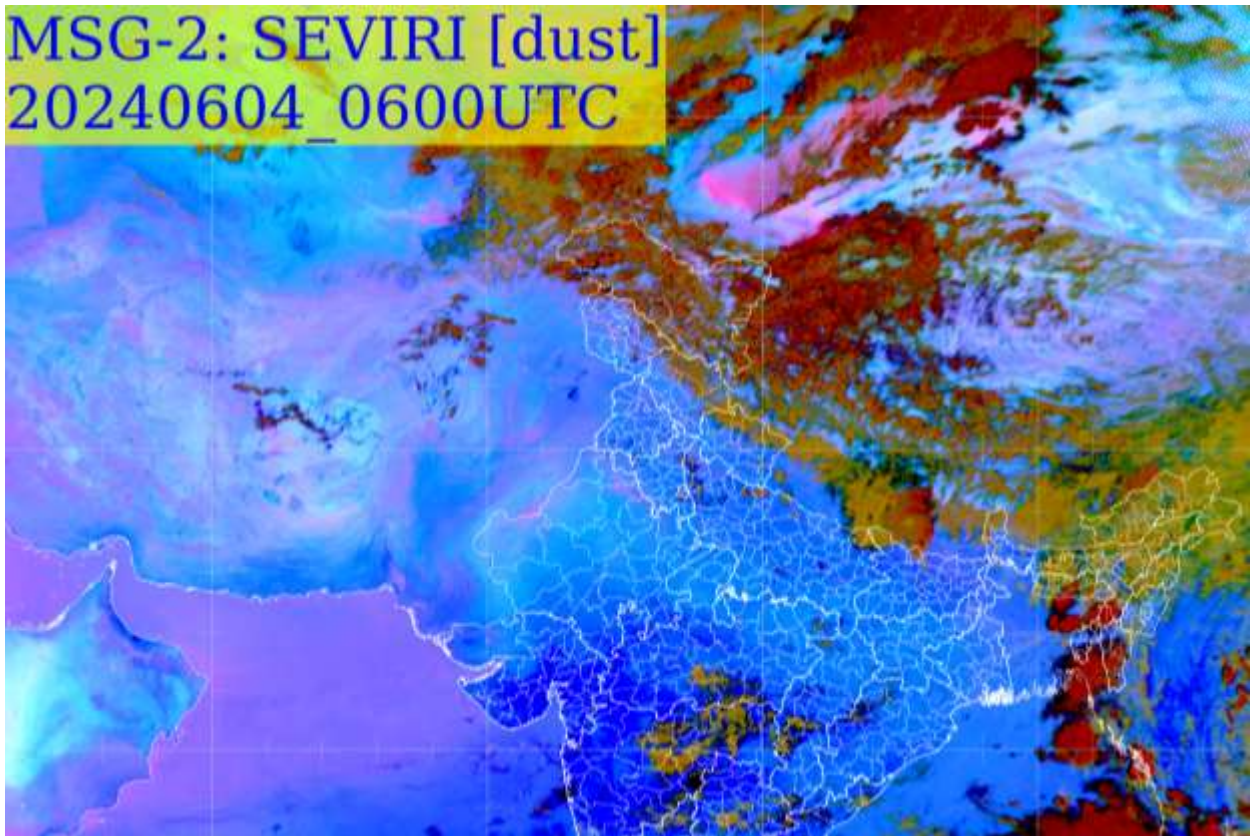
CONVECTIVE / THUNDERSTORM ACTIVITY:-

MODERATE TO INTENSE CONVECTIVE / THUNDERSTORM ACTIVITY OBSERVED OVER LADAKH N J&K MEGHA S ASSAM MIZO TRP S KKN GOA W NIK S COTL AP S TN (MINIMUM **CTT MINUS 55-70 DEG CEL**) (.)

DUST:-

METEOSAT RGB DUST IMAGERY AT 0600 UTC SHOWS LIGHT DUST OVER WEST RAJ (.)

MSG-2: SEVIRI [dust]
20240604_0600UTC



CLOUDS DESCRIPTION WITHIN INDIA:-

NORTH:-

SCT LOW/MED CLOUDS WITH EMBDD MOD TO INT CONVTN OVER LADAKH N J&K AND ISOL WK TO MOD CONVTN OVER S J&K N HP N UTRKND S PJB HARY UP (.) SCT LOW/MED CLOUDS OVER S HP S UTRKND N PJB (.)

EAST:-

SCT LOW/MED CLOUDS WITH EMBDD MOD TO INT CONVTN OVER MEGHA ASSAM TRP MIZO & E BD (.) SCT LOW/MED CLOUDS WITH EMBDD WK TO MOD CONVTN OVER NW BHR CHTGH W ORS SKM REST NE STATES (.) SCT LOW/MED CLOUDS OVER REST BHR JHRKND E ORS GWB SHWB (.)

WEST:-

SCT LOW/MED CLOUDS WITH EMBDD MOD TO INT CONVTN OVER S KKN GOA (.) SCT LOW/MED CLOUDS WITH EMBDD WK TO MOD CONVTN OVER E MP REST MAHA (.) SCT LOW/MED CLOUDS OVER SE RAJ GUJ (.)

SOUTH:-

SCT LOW/MED CLOUDS WITH EMBDD MOD TO INT CONVTN OVER W NIK S COTL AP S TN (.) SCT LOW/MED CLOUDS WITH EMBDD ISOL WK TO MOD CONVTN OVER REST KRNTK TLNGN RYLSM N COTL AP KER N TN LKSDP ILS AREA ANDAMAN & NICOBAR ILS (.)

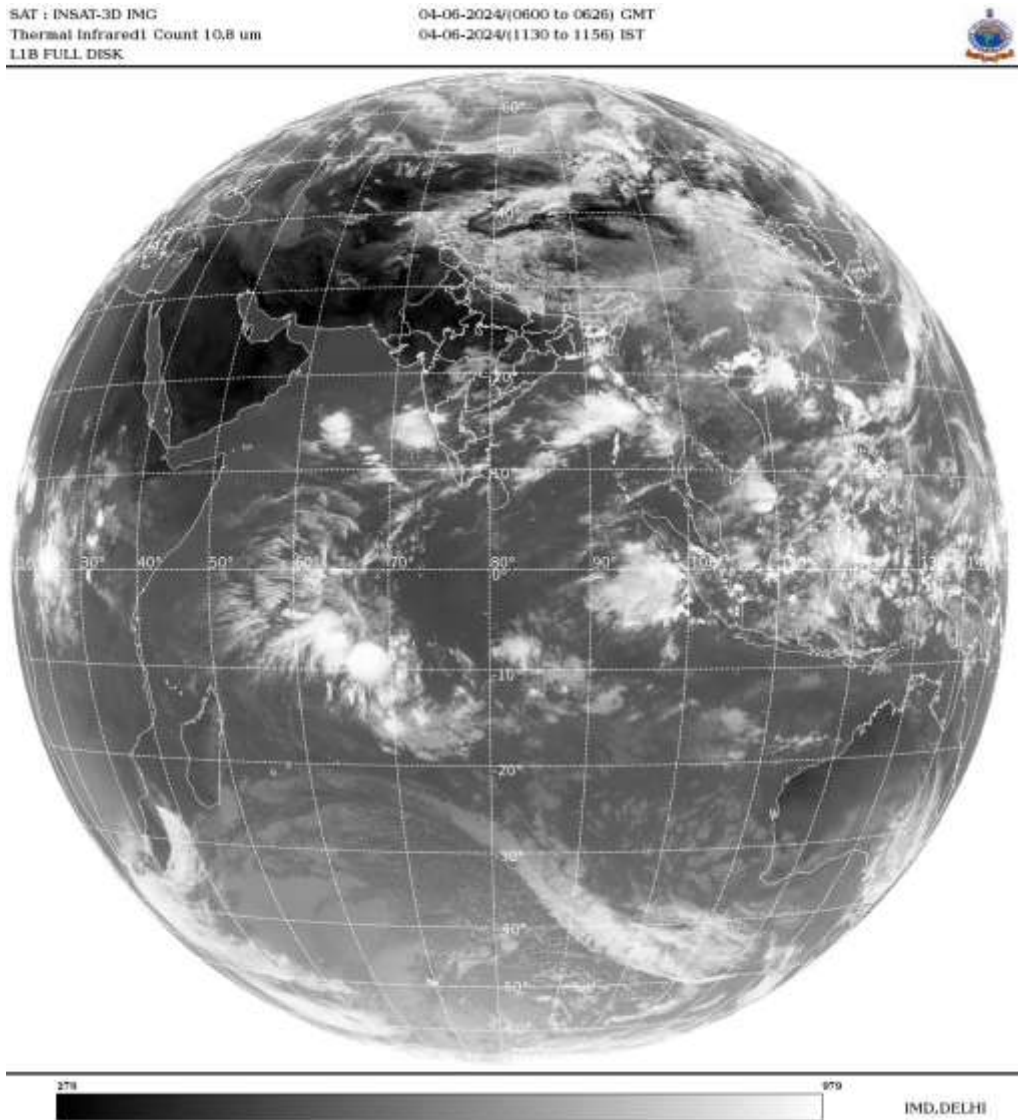
ARABIAN SEA:-

SCT LOW/MED CLOUDS WITH EMBDD INT TO V INT CONVTN OVER CENTRAL & SE ARSEA (MINIMUM **CTT MINUS 75-80 DEG CEL**) (.) SCT LOW/MED CLOUDS WITH EMBDD ISOL MOD TO INT CONVTN OVER SW ARSEA LKSDP ILS AREA MALDIVES & COMORIN AREA (.)

BAY OF BENGAL & ANDAMAN SEA:-

SCT LOW/MED CLOUDS WITH EMBDD INT TO V INT CONVTN OVER NE & EC BAY ARAKAN COAST (MINIMUM **CTT MINUS 80-90 DEG CEL**) (.) SCT LOW/MED CLOUDS WITH EMBDD MOD TO INT CONVTN OVER WC & SOUTH BAY ANDAMAN SEA GULF OF MARTABAN & TENASSERIM COAST (.) SCT LOW/MED CLOUDS OVER NW BAY (.)

CLOUDS DESCRIPTION OUTSIDE INDIA:-



SCT LOW/MED CLOUDS WITH EMBDD MOD TO INT CONVTN OVER N SRI LANKA GULF OF MANNAR MALDIVES NEPAL BHUTAN TIBET CHINA YELLOW SEA EAST CHINA SEA MYANMAR THAILAND GULF OF THAILAND CAMBODIA LAOS VIETNAM GULF OF TONKIN HAINAN SUMATRA STR OF MALACCA MALAYSIA BORNEO SOUTH CHINA SEA JAVA ILS & SEA CELEBES ILS & SEA PHILIPPINES SULU SEA AND OVER INDIAN OCEAN BET LAT 5.0N TO 20.0S LONG 50.0E TO 100.0E (.)

TOO 04/1240 HRS IST=

NNNN

LEGEND:-

REGION	NORTH	J&K HP PJB HARY DLH UP UTRKND	
	EAST	BHR JHRKND CHTGH ORS WB SKM NORTH- EAST STATES	
	WEST	RAJ MP GUJ MAHA GOA	
	SOUTH	TLNGN AP KRNTK KER TN LKSDP ANDAMAN & NICOBAR ILS	
CLOUD DISTRIBUTION	ISOL	ISOLATED (LESS THAN 25%)	
	SCT	SCATTERED (25 TO 50%)	
	BKN	BROKEN (51 TO 75%)	
	SLD	SOLID (GREATER THAN 75%)	
CLOUDS TOP TEMPERATURE	CTT	CLOUD TOP TEMPERATURE	
CONVECTION	WK CONV TN	WEAK CONVECTION (CTT GREATER THAN -25°C)	
	MOD CONV TN	MODERATE CONVECTION (CTT BETWEEN -25°C TO -40°C)	
	INT CONV TN	INTENSE CONVECTION (CTT BETWEEN -41°C TO -70°C)	
	V INT CONV TN	VERY INTENSE CONVECTION (CTT LESS THAN -70°C)	
METEOROLOGICAL SUB- DIVISIONS, STATES & UNION TERITORIES	ARUPR	ARUNACHAL PRADESH	
	BHR	BIHAR	
	CHTGH	CHHATTISGARH	
	COTL AP	COASTAL ANDHRA PRADESH	
	COTL KRNTK	COASTAL KARNATAKA	
	COTL ORS	COASTAL ORISSA	
	GUJ	GUJARAT	
	GWB	GANGETIC WEST BENGAL	
	HARY	HARYANA	
	DLH	DELHI	
	HP	HIMACHAL PRADESH	
	J&K	JAMMU AND KASHMIR	
	JHRKND	JHARKHAND	
	KER	KERALA	
	KKN	KONKAN	
	LKSDP	LAKSHADWEEP	
	M MAHA	MADHYA MAHARASHTRA	
	MAHA	MAHARASHTRA	
	MANI	MANIPUR	
	MEGHA	MEGHALAYA	
	MIZO	MIZORAM	
	MP	MADHYA PRADESH	
		MRTHWD	MARATHWADA
		NAGA	NAGALAND
N COTL AP		NORTH COASTAL ANDHRA PRADESH	
NIK		NORTH INTERIOR KARNATAKA	

	ORS	ORISSA
	PJB	PUNJAB
	RAJ	RAJASTHAN
	RYLSM	RAYALASEEMA
	SAU & KUTCH	SAURASHTRA & KUTCH
	SHWB	SUB-HIMALAYAN WEST BENGAL
	SIK	SOUTH INTERIOR KARNATAKA
	SKM	SIKKIM
	TLNGN	TELANGANA
	TN	TAMIL NADU
	TRP	TRIPURA
	UP	UTTAR PRADESH
	UTRKND	UTTARAKHAND
	VID	VIDHARBHA
	SHWB	SUB HIMALAYAN WEST BENGAL
	GWB	GANGETIC WEST BENGAL
	ARSEA	ARABIAN SEA
	ILS	ISLANDS
MISCELLANEOUS	ASSW	IN ASSOCIATION WITH
	ASSTD	ASSOCIATED
	LLC	LOW LEVEL CIRCULATION
	EMBDD	EMBEDDED
	N/HOOD	NEIGHBOURHOOD
	EXT	EXTREME