



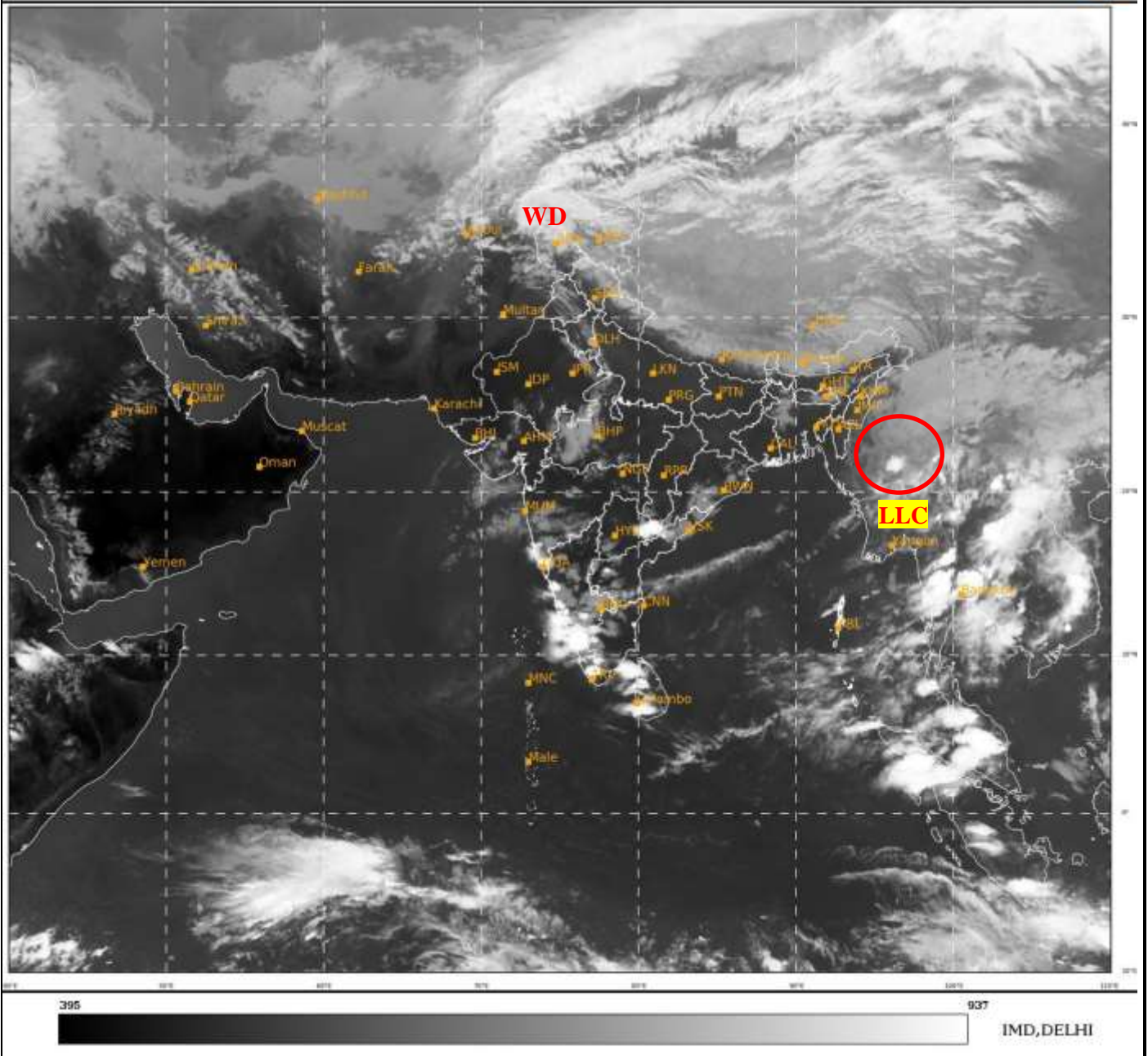
भारत मौसम विज्ञान विभाग
पृथ्वी विज्ञान मंत्रालय
India Meteorological Department
Ministry of Earth Sciences



**SATELLITE BULLETIN BASED ON SATELLITE
IMAGERIES AND PRODUCTS**
23.03.2022 TIME 1200 UTC

SAT : INSAT-3D IMG
IMG_TIR1 10.8 um
LIC Mercator

23-03-2022/(1230 to 1256) GMT
23-03-2022/(1800 to 1826) IST



TCIN50 DEMS 231200

SATELLITE BULLETIN BASED ON INSAT-3DR PIC OF 231200 UTC (.)

REGION COVERED BETWEEN LAT 50.0°N TO 30.0°S AND LONG 40.0°E TO 125.0°E (.)

SALIENT FEATURES:-

LLC OVER CENTRAL MYANMAR & N/HOOD:-

SCT TO BKN LOW/MED CLOUDS WITH EMBDD MOD TO INT CONVTN OVER CENTRAL MYANMAR & N/HOOD IN ASSW LOW LEVEL CIRCULATION (LLC) OVER THE AREA (.)
MINIMUM CTT MINUS 68 DEG C (.)

WESTERN DISTURBANCE (WD):-

SCT MULTILAYERED CLOUDS OVER N AFGAN EXT N PAK NW LADAKH AND N/HOOD IN ASSW WD OVER THE AREA (.)

PRECIPITATION NOWCASTING:-

(BASED ON SCOPE NOWCASTING TOOL AT A LEAD TIME OF 180 MINUTES):-

RAINFALL UP TO 0.5-5.0 MM OBSERVED OVER NICOBAR ILS (.)



INSAT-3DR 23-MAR-2022 13:15 WV IMG

WATER VAPOUR WIND

(1Kt = 0.5 m/s)

10 Kt

15 Kt

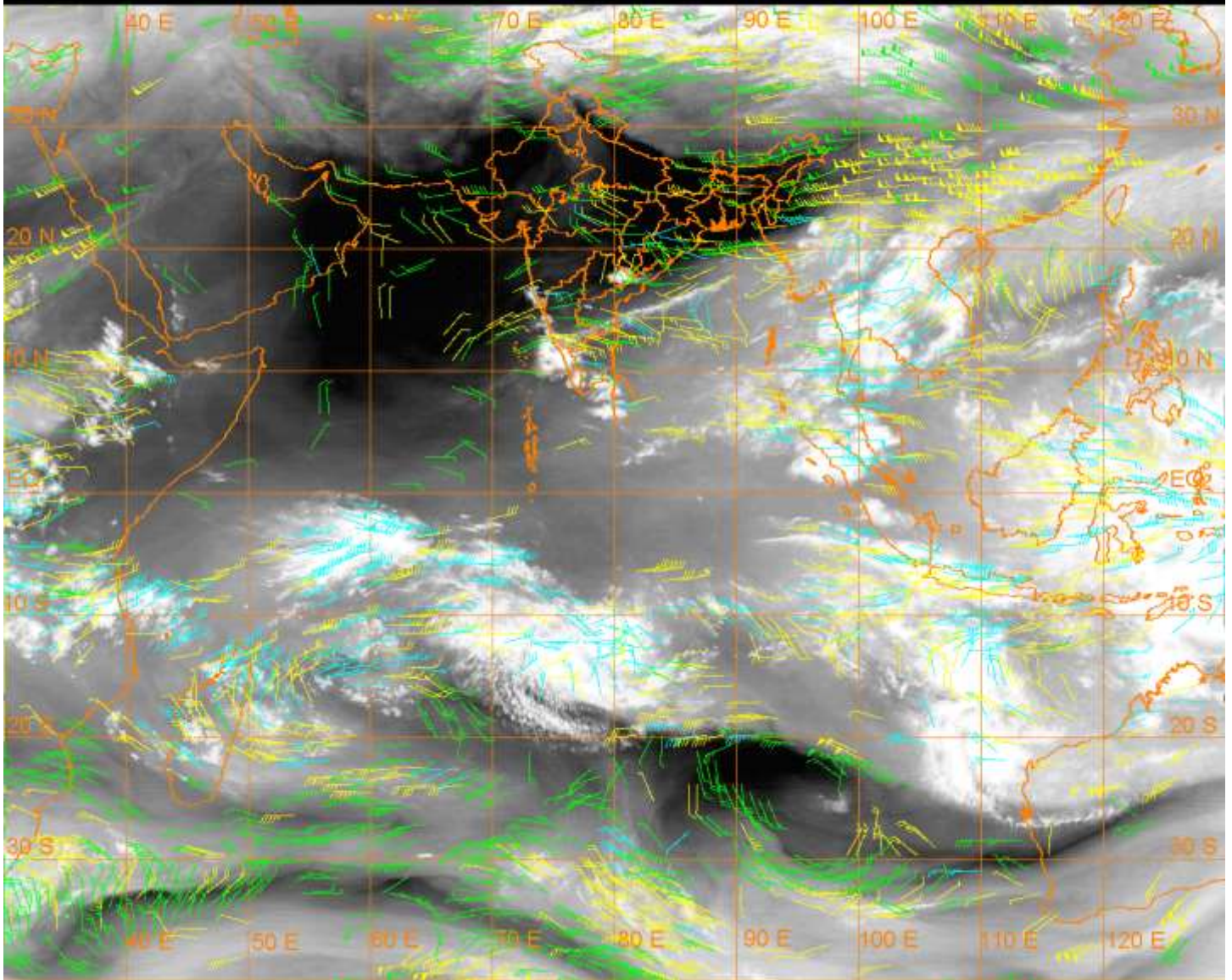
20 Kt

50 Kt

100-250 hPa

251-350 hPa

351-500 hPa



CLOUDS DESCRIPTION WITHIN INDIA:-

NORTH:-

SCT LOW/MED CLOUDS WITH EMBDD MOD TO INT CONVTN OVER NW LADAKH NW J&K (.)
SCT LOW/MED CLOUDS WITH EMBDD ISOL WK CONVTN OVER REST LADAKH REST J&K N HP
N UTRKND PJB HARY DLH (.) SCT LOW/MED CLOUDS OVER S HP S UTRKND.)

EAST:-

SCT LOW/MED CLOUDS WITH EMBDD ISOL MOD TO INT OVER CONVTN S CHTGH (.)SCT
LOW/MED CLOUDS WITH EMBDD WK CONVTN OVER SKM ARUPR MEGHA NAGA (.) SCT
LOW/MED CLOUDS OVER S ORS N GWB N SHWB MANI& MIZO (.)

WEST:-

SCT LOW/MED CLOUDS WITH EMBDD MOD TO INT CONVTN OVER S M MAHA GOA (.) SCT
LOW/MED CLOUDS WITH EMBDD ISOL WK CONVTN OVER E RAJ MP GUJ S KKN ADJ M MAHA
VID (.) SCT LOW/MED CLOUDS OVER MRTHWD NW RAJ GOA (.)

SOUTH:-

SCT LOW/MED CLOUDS WITH EMBDD MOD TO INT CONVTN OVER KER NW TN SIK COTL
KRNTNK NICOBAR (.) SCT LOW/MED CLOUDS WITH EMBDD ISOL WK TO MOD CONVTN OVER
ANDAMAN ILS (.) SCT LOW/MED CLOUDS OVER RYLSM REST KRNTK COTL AP REST TKER TN
TLNGN LKSDP (.)

ARABIAN SEA:-

SCT LOW/MED CLOUDS OVER WITH EMBDD MOD TO INT CONVTN OVER EC SE & COMORIN
ARSEA OFF MAHA- KER – KRNTK COAST (.) SCT LOW/MED CLOUDS WITH WK TO MOD
CONVTN OVER GULF OF CAMBAY (.)

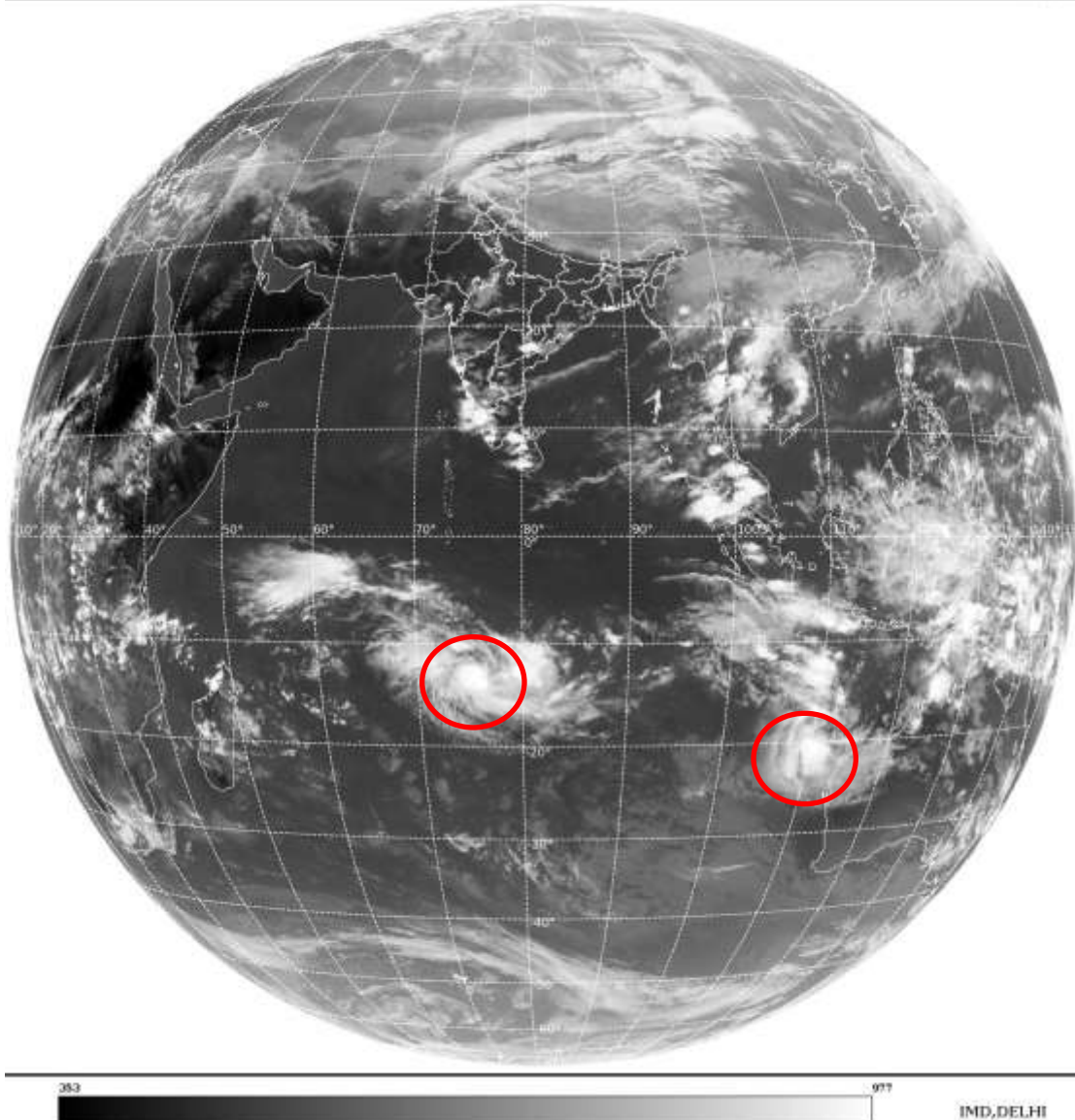
BAY OF BENGAL & ANDAMAN SEA:-

**SCT LOW/MED CLOUDS WITH EMBDD MOD TO INT CONVTN OVER SE BAY ANDAMAN SEA
ARAKAN COAST GULF OF MARTABAN (.)**

CLOUDS DESCRIPTION OUTSIDE INDIA:-

SAT : INSAT-3D IMG
Thermal Infrared1 Count 10.8 um
LIB FULL DISK

23-03-2022/(1230 to 1256) GMT
23-03-2022/(1800 to 1826) IST



VORTEX OVER SOUTH INDIAN OCEAN:-

**VORTEX (CHARLOTTE) OVER SOUTH INDIAN OCEAN CENTERED NEAR 20.1S / 109.5E (.)
INTENSITY T4.0/4.5 (.) ASSTD BKN LOW/MED CLOUDS WITH EMBDD INT TO V INT CONVTN
OVER AREA BET LAT 17.0S TO 23.0S LONG 105.0E TO 112.0E (.)**

**ANOTHER VORTEX OVER SOUTH INDIAN OCEAN CENTERED NEAR 13.0S / 75.8E (.) INTENSITY
T2.0/2.0 (.) ASSTD BKN LOW/MED CLOUDS WITH EMBDD INT TO V INT CONVTN OVER AREA
BET LAT 08.0S TO 18.0S LONG 67.0E TO 83.0E (.)**

**SCT LOW/MED CLOUDS WITH EMBDD MOD TO INT CONVTN OVER N TIBET CHINA MYANMAR
THAILAND GULF OF THAILAND LAOS VIETNAM SUMATRA STR OF MALACCA MALAYSIA
BORNEO S CHINA SEA JAVA ILS & SEA CELEBES ILS & SEA S PHILIPPINES TAIWAN YELLOW
SEA MADAGASCAR MOZAMBIQUE CHANNEL AND OVER INDIAN OCEAN BET LAT 2.0S TO 20.0S
LONG 50.0E TO 90.0E AND BET LAT 5.0S TO 25.0S LONG 90.0E TO 115.0E (.)**

TOO 23/1850 HRS IST=

NNNN

LEGEND:-

REGION	NORTH	J&K HP PJB HARY DLH UP UTRKND
	EAST	BHR JHRKND CHTGH OR WB SKM NORTH- EAST STATES
	WEST	RAJ MP GUJ MAHA GOA
	SOUTH	TLNGN AP KRNTK KER TN LKSDP ANDAMAN & NICOBAR ILS

CLOUD DISTRIBUTION	ISOL	ISOLATED (LESS THAN 25%)
	SCT	SCATTERED (25 TO 50%)
	BKN	BROKEN (51 TO 75%)
	SLD	SOLID (GREATER THAN 75%)
CLOUDS TOP TEMPERATURE	CTT	CLOUD TOP TEMPERATURE
CONVECTION	WK CONVTN	WEAK CONVECTION (CTT GREATER THAN -25°C)
	MOD CONVTN	MODERATE CONVECTION (CTT BETWEEN -25°C TO -40°C)
	INT CONVTN	INTENSE CONVECTION (CTT BETWEEN -41°C TO -70°C)
	V INT CONVTN	VERY INTENSE CONVECTION (CTT LESS THAN -70°C)
METEOROLOGICAL SUB-DIVISIONS, STATES & UNION TERRITORIES	ARUPR	ARUNACHAL PRADESH
	BHR	BIHAR
	CHTGH	CHHATTISGARH
	COTL AP	COASTAL ANDHRA PRADESH
	COTL KRNTK	COASTAL KARNATAKA
	COTL ORS	COASTAL ORISSA
	GUJ	GUJARAT
	GWB	GANGETIC WEST BENGAL
	HARY	HARYANA
	DLH	DELHI
	HP	HIMACHAL PRADESH
	J&K	JAMMU AND KASHMIR
	JHRKND	JHARKHAND
	KER	KERALA
	KKN	KONKAN
	LKSDP	LAKSHADWEEP
	M MAHA	MADHYA MAHARASHTRA
	MAHA	MAHARASHTRA
	MANI	MANIPUR
	MEGHA	MEGHALAYA
	MIZO	MIZORAM
	MP	MADHYA PRADESH
	MRTHWD	MARATHWADA
	NAGA	NAGALAND

	N COTL AP	NORTH COASTAL ANDHRA PRADESH
	NIK	NORTH INTERIOR KARNATAKA
	ORS	ORISSA
	PJB	PUNJAB
	RAJ	RAJASTHAN
	RYLSM	RAYALASEEMA
	SAU & KUTCH	SAURASHTRA & KUTCH
	SHWB	SUB-HIMALAYAN WEST BENGAL
	SIK	SOUTH INTERIOR KARNATAKA
	SKM	SIKKIM
	TLNGN	TELANGANA
	TN	TAMIL NADU
	TRP	TRIPURA
	UP	UTTAR PRADESH
	UTRKN	UTTARAKHAND
	VID	VIDHARBHA
	SHWB	SUB HIMALAYAN WEST BENGAL
	GWB	GANGETIC WEST BENGAL
	ARSEA	ARABIAN SEA
	ILS	ISLANDS
MISCELLANEOUS	ASSW	IN ASSOCIATION WITH
	ASSTD	ASSOCIATED
	LLC	LOW LEVEL CIRCULATION
	EMBDD	EMBEDDED
	N/HOOD	NEIGHBOURHOOD
	EXT	EXTREME