



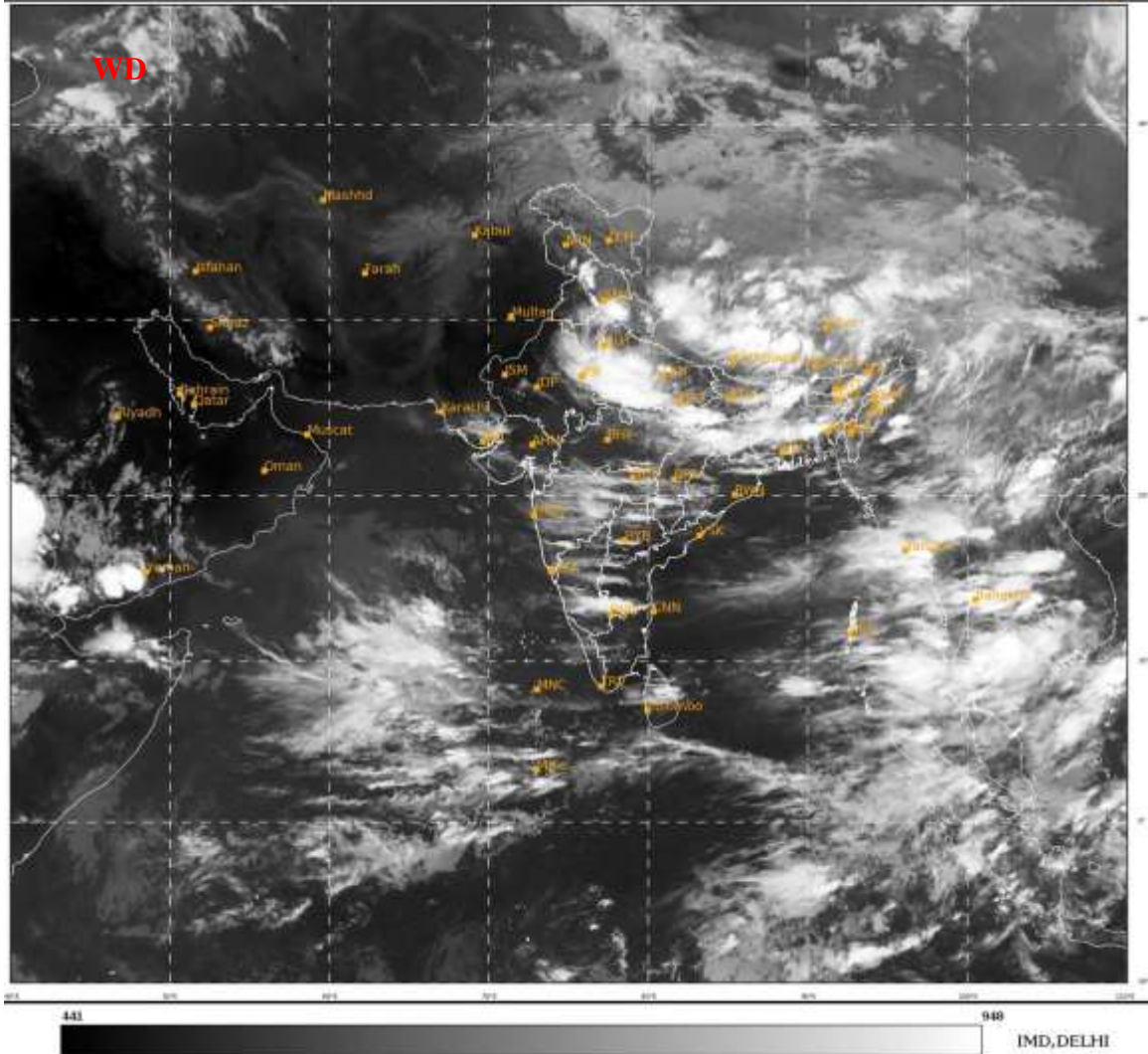
SATELLITE BULLETIN BASED ON SATELLITE

IMAGERIES AND PRODUCTS

24.08.2021 TIME 1500 UTC

SAT : INSAT-3D IMG
IMG_TIR1 10.8 um
LIC Mercator

24-08-2021/(1500 to 1526) GMT
24-08-2021/(2030 to 2056) IST



TCIN50 DEMS 241500

SATELLITE BULLETIN BASED ON INSAT-3D PIC OF 241500 UTC (.)

REGION COVERED BETWEEN LAT 50.0°N TO 30.0°S AND LONG 40.0°E TO 125.0°E (.)

SALIENT FEATURES:-

WESTERN DISTURBANCE (WD):-

SCT MULTILAYERED CLOUDS OVER EXT N CASPEAN SEA AND N/HOOD IN ASSW **WD** OVER THE AREA (.)

CLOUDS DESCRIPTION WITHIN INDIA:-

NORTH:-

SCT LOW/MED CLOUDS WITH EMBDD MOD TO INT CONVTN OVER EXT NW HP ADJ J&K NW UTRKND ADJ HP HARY DEL UP NE UTRKND (.) SCT LOW/MED CLOUDS WITH EMBDD WK TO MOD CONVTN OVER E PJB REST UTRKND REST HP (.) SCT LOW/MED CLOUDS OVER LADAKH REST J&K AND REST PJB (.)

EAST:-

SCT LOW/MED CLOUDS WITH EMBDD MOD TO INT CONVTN OVER N CTGH NE ORS JHRKND BHR SKM SHWB C ASSAM N ARUPR NAGA (.) SCT LOW/MED CLOUDS WITH EMBDD WK TO MOD CONVTN OVER REST PARTS OF THE REGION EXCEPT SCT LOW/MD CLOUDS OVER MIZO TRP S COTL ORS (.)

WEST:-

SCT LOW/MED CLOUDS WITH EMBDD MOD TO INT CONVTN OVER EXT N MP NW GUJ VID MRTWD M MAHA EXT N RAJ (.) SCT LOW/MED CLOUDS WITH EMBDD WK TO MOD CONVTN OVER REST GUJ REST MP AND KKN (.) SCT LOW/MED CLOUDS OVER REST PARTS OF THE REGION (.)

SOUTH:-

SCT LOW/MED CLOUDS WITH EMBDD MOD TO INT CONVTN OVER TLNGN RYLSM NIK N SIK AND WK TO MOD CONVTN OVER REST KRNTK N KER ANDAMAN & NICOBAR ILS (.) SCT LOW/MED CLOUDS OVER REST PARTS OF THE REGION (.)

ARABIAN SEA:-

SCT LOW/MED CLOUDS WITH EMBDD INT CONVTN OVER SOUTH PARTS OF CENTRAL ARSEA & SOUTH ARSEA (.) SCT LOW/MED CLOUDS WITH EMBDD WK CONVTN OVER EC ARSEA OFF N MAHA COAST (.)

BAY OF BENGAL & ANDAMAN SEA:-

SCT LOW/MED CLOUDS WITH EMBDD MOD TO INT CONVTN OVER EC BAY & ANDAMAN SEA S ARAKAN COT TENASSERIM COT(.) SCT LOW/MED CLOUDS WITH EMBDD WK TO MOD CONVTN OVER SE BAY (.)

CLOUDS DESCRIPTION OUTSIDE INDIA:-

SCT LOW/MED CLOUDS WITH EMBDD MOD TO INT CONVTN OVER N SRI LANKA GULF OF MANNAR PALK STR MALDIVES NEPAL BHUTAN TIBET CHINA YELLOW SEA E CHINA SEA TAIWAN MYANMAR THAILAND GULF OF THAILAND S CAMBODIA LAOS S VIETNAM GULF OF TONKIN SUMATRA STR OF MALACCA MALAY PENINSULA BORNEO S CHINA SEA JAVA CELEBES ILS & SEA PHILIPPINES SULU SEA AND OVER INDIAN OCEAN BET LAT 5.0N TO 12.5S EAST OF LONG 82.0E (.)

TOO 24/2120EF=

NNNN

LEGEND:-

REGION	NORTH	J&K HP PJB HARY DLH UP UTRKND
	EAST	BHR JHRKND CHTGH ORS WB SKMNORTH-EAST STATES
	WEST	RAJ MP GUJ MAHA GOA
	SOUTH	TLNGN AP KRNTK KER TN LKSDP ANDAMAN & NICOBAR ILS

CLOUD DISTRIBUTION	ISOL	ISOLATED (LESS THAN 25%)
	SCT	SCATTERED (25 TO 50%)
	BKN	BROKEN (51 TO 75%)
	SLD	SOLID (GREATER THAN 75%)
CLOUDS TOP TEMPERATURE	CTT	CLOUD TOP TEMPERATURE
CONVECTION	WK CONVTN	WEAK CONVECTION (CTT GREATER THAN -25°C)
	MOD CONVTN	MODERATE CONVECTION (CTT BETWEEN -25°C TO -40°C)
	INT CONVTN	INTENSE CONVECTION (CTT BETWEEN -41°C TO -70°C)
	V INT CONVTN	VERY INTENSE CONVECTION (CTT LESS THAN -70°C)
METEOROLOGICAL SUB-DIVISIONS, STATES & UNION TERRITORIES	ARUPR	ARUNACHAL PRADESH
	BHR	BIHAR
	CHTGH	CHHATTISGARH
	COTL AP	COASTAL ANDHRA PRADESH
	COTL KRNTK	COASTAL KARNATAKA
	COTL ORS	COASTAL ORISSA
	GUJ	GUJARAT
	GWB	GANGETIC WEST BENGAL
	HARY	HARYANA
	DLH	DELHI
	HP	HIMACHAL PRADESH
	J&K	JAMMU AND KASHMIR
	JHRKND	JHARKHAND
	KER	KERALA
	KKN	KONKAN
	LKSDP	LAKSHADWEEP
	M MAHA	MADHYA MAHARASHTRA
	MAHA	MAHARASHTRA
	MANI	MANIPUR
	MEGHA	MEGHALAYA
MIZO	MIZORAM	
MP	MADHYA PRADESH	

	MRTHWD	MARATHWADA
	NAGA	NAGALAND
	N COTL AP	NORTH COASTAL ANDHRA PRADESH
	NIK	NORTH INTERIOR KARNATAKA
	ORS	ORISSA
	PJB	PUNJAB
	RAJ	RAJASTHAN
	RYLSM	RAYALASEEMA
	SAU & KUTCH	SAURASHTRA & KUTCH
	SHWB	SUB-HIMALAYAN WEST BENGAL
	SIK	SOUTH INTERIOR KARNATAKA
	SKM	SIKKIM
	TLNGN	TELANGANA
	TN	TAMIL NADU
	TRP	TRIPURA
	UP	UTTAR PRADESH
	UTRKN	UTTARAKHAND
	VID	VIDHARBHA
	SHWB	SUB HIMALAYAN WEST BENGAL
	GWB	GANGETIC WEST BENGAL
	ARSEA	ARABIAN SEA
	ILS	ISLANDS
MISCELLANEOUS	ASSW	IN ASSOCIATION WITH
	ASSTD	ASSOCIATED
	LLC	LOW LEVEL CIRCULATION
	EMBDD	EMBEDDED
	N/HOOD	NEIGHBOURHOOD
	EXT	EXTREME