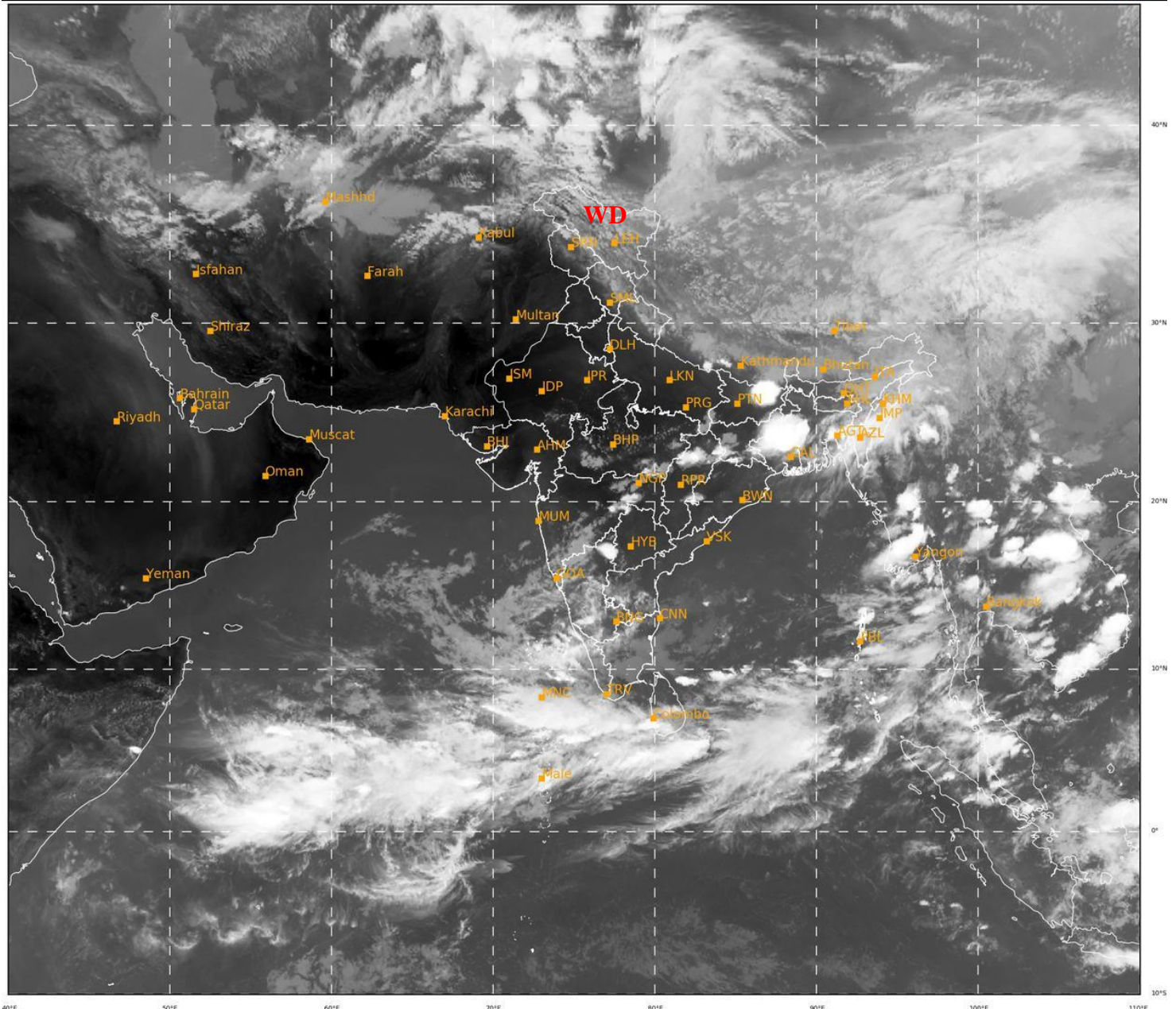




**SATELLITE BULLETIN BASED ON SATELLITE
IMAGERIES AND PRODUCTS**
13.05.2022 TIME 1200 UTC

SAT : INSAT-3D IMG
IMG_TIR1 10.8 um
LIC Mercator

13-05-2022/(1200 to 1226) GMT
13-05-2022/(1730 to 1756) IST



319

937

IMD, DELHI

TCIN50 DEMS 131200

SATELLITE BULLETIN BASED ON INSAT-3D PIC OF 131200 UTC (.)

REGION COVERED BETWEEN LAT 50.0°N TO 30.0°S AND LONG 40.0°E TO 125.0°E (.)

SALIENT FEATURES:-

WESTERN DISTURBANCE (WD):-

SCT MULTILAYERED CLOUDS OVER LADAKH TIBET ADJ CHINA IN ASSW **WD** OVER THE AREA (.)

THUNDERSTORM / CONVECTIVE ACTIVITY:-

THUNDERSTORM / CONVECTIVE ACTIVITIES OBSERVED OVER NE JHRKND NE BHR N CHTGH N GWB NE STATES S VID NE NIK W SIK LKSDP ILS ANDAMAN ILS (.)

DUST:-

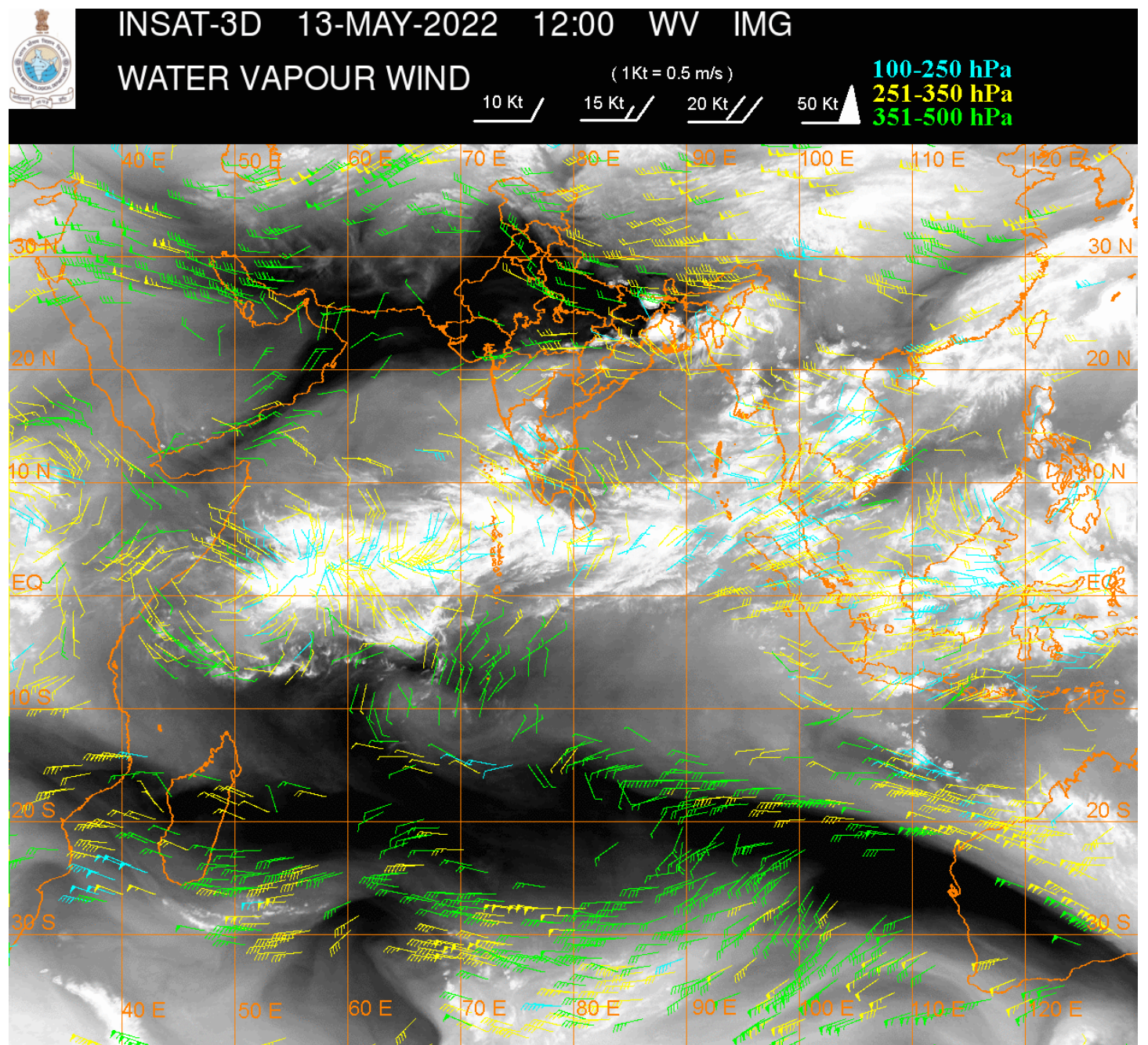
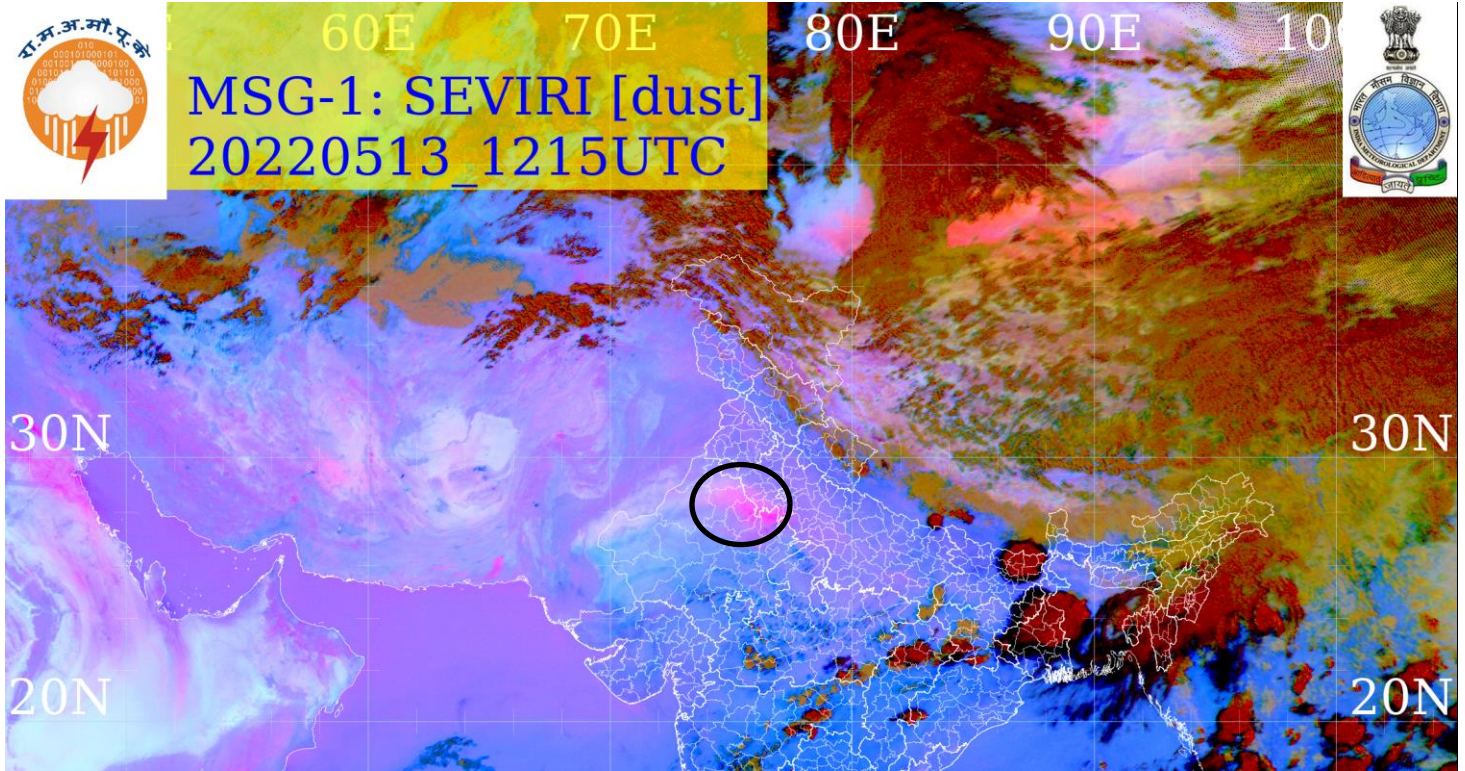
METEOSAT-8 RGB DUST PRODUCT AT 1200 UTC INDICATES DUST OVER N RAJ ADJ S HARY (.)

PRECIPITATION NOWCASTING:-

(BASED ON SCOPE NOWCASTING TOOL AT 1100 UTC AT A LEAD TIME OF 03 HRS (MM/HR):-

RAINFALL UPTO 10-15 MM LIKELY OVER SE BHR N GWB MANI MIZO TRP LKSDP (.)

RAINFALL UPTO 0.5-5 MM LIKELY OVER E UTRKND E ARUPR MEGHA S ASSAM N CHTGH EXT SE MP KRNTK S RYLSM N KER NW TN NICOBAR ILS (.)



CLOUDS DESCRIPTION WITHIN INDIA:-

NORTH:-

SCT LOW/MED CLOUDS WITH EMBDD WK TO MOD CONVTN OVER LADAKH N J&K N HP N UTRKND SE UP (.) ISOL TO SCT LOW/MED CLOUDS OVER S J&K S HP S UTRKND NE UP (.)

EAST:-

SCT TO BKN LOW/MED CLOUDS WITH EMBDD INT TO V INT CONVTN OVER NE JHRKND NE BHRH N GWB MANI TRP (MINIMUM CTT MINUS 93 DEG C) & E BD AND MOD TO INT CONVTN OVER SW JHRKND N CHTGH EXT WC ORS E ASSAM NAGA MIZO (.) SCT LOW/MED CLOUDS WITH EMBDD WK TO MOD CONVTN OVER REST JHRKND S GWB SKM REST NE STATES (.) SCT LOW/MED CLOUDS OVER REST BHR S CHTGH REST ORS SHWB (.)

WEST:-

SCT LOW/MED CLOUDS WITH EMBDD MOD TO INT CONVTN OVER SE MP S VID (.) SCT LOW/MED CLOUDS WITH EMBDD WK TO MOD CONVTN OVER REST MP MRTHWD SOUTH MADHYA MAHA S KKN GOA (.) SCT LOW/MED CLOUDS OVER E RAJ REST MAHA (.)

SOUTH:-

SCT LOW/MED CLOUDS WITH EMBDD INT TO V INT CONVTN OVER NE NIK (.) SCT LOW/MED CLOUDS WITH EMBDD MOD TO INT CONVTN OVER SIK S RYLSM ADJ S COTL AP N KER N TN ANDAMAN ILS LKSDP ILS (.) SCT LOW/MED CLOUDS WITH EMBDD WK TO MOD CONVTN OVER REST KRNTK S KER REST TN & NICOBAR ILS (.) SCT LOW/MED CLOUDS OVER TLNGN N RYLSM N COTL AP (.)

ARABIAN SEA:-

SCT LOW/MED CLOUDS WITH EMBDD MOD TO INT CONVTN OVER SOUTH ARSEA AND COMORIN AREA (.) SCT LOW/MED CLOUDS WITH EMBDD WK TO MOD CONVTN OVER EC ARSEA (.)

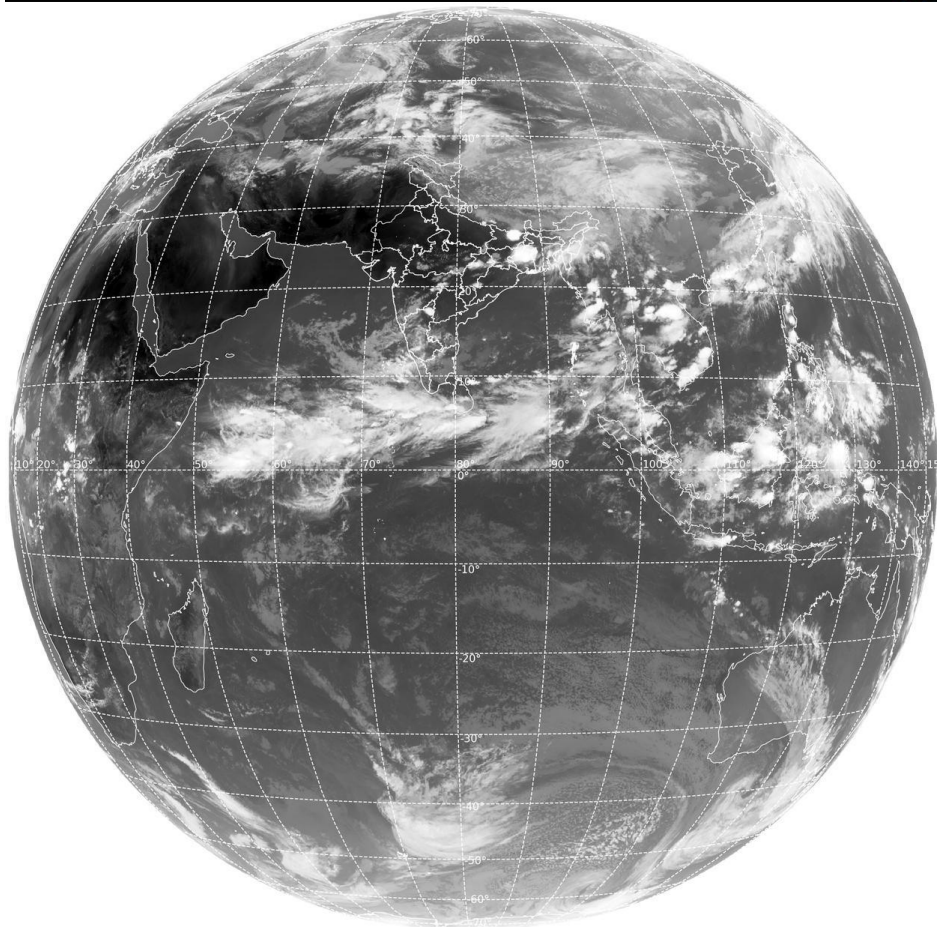
BAY OF BENGAL & ANDAMAN SEA:-

SCT LOW/MED CLOUDS WITH EMBDD MOD TO INT CONVTN OVER S BAY AND ANDAMAN SEA (.)

CLOUDS DESCRIPTION OUTSIDE INDIA:-

SAT : INSAT-3D IMG
Thermal Infrared1 Count 10.8 um
L1B FULL DISK

13-05-2022/(1200 to 1226) GMT
13-05-2022/(1730 to 1756) IST



SCT LOW/MED CLOUDS WITH EMBDD MOD TO INT CONVTN OVER S SRI LANKA MALDIVES
 NEPAL BHUTAN TIBET CHINA SEA HAINAN TAIWAN MYANMAR THAILAND GULF OF
 THAILAND CAMBODIA LAOS VIETNAM HAINAN SUMATRA STR OF MALACCA MALAYSIA
 BORNEO SOUTH CHINA SEA JAVA ILS & SEA CELEBES ILS & SEA PHILIPPINES SULU SEA
 YELLOW SEA E CHINA AND OVER INDIAN OCEAN BET LAT 5.0N TO 4.0S LONG 51.0E TO 94.0E
 (.)

TOO 13/1830 HRS IST=

NNNN

LEGEND:-

REGION	NORTH	J&K HP PJB HARY DLH UP UTRKND
	EAST	BHR JHRKND CHTGH OR WB SKM NORTH- EAST STATES
	WEST	RAJ MP GUJ MAHA GOA
	SOUTH	TLNGN AP KRNTK KER TN LKSDP ANDAMAN & NICOBAR ILS

CLOUD DISTRIBUTION	ISOL	ISOLATED (LESS THAN 25%)
	SCT	SCATTERED (25 TO 50%)
	BKN	BROKEN (51 TO 75%)
	SLD	SOLID (GREATER THAN 75%)
CLOUDS TOP TEMPERATURE	CTT	CLOUD TOP TEMPERATURE
CONVECTION	WK CONVTN	WEAK CONVECTION (CTT GREATER THAN -25°C)
	MOD CONVTN	MODERATE CONVECTION (CTT BETWEEN -25°C TO -40°C)
	INT CONVTN	INTENSE CONVECTION (CTT BETWEEN -41°C TO -70°C)
	V INT CONVTN	VERY INTENSE CONVECTION (CTT LESS THAN -70°C)
METEOROLOGICAL SUB-DIVISIONS, STATES & UNION TERRITORIES	ARUPR	ARUNACHAL PRADESH
	BHR	BIHAR
	CHTGH	CHHATTISGARH
	COTL AP	COASTAL ANDHRA PRADESH
	COTL KRNTK	COASTAL KARNATAKA
	COTL ORS	COASTAL ORISSA
	GUJ	GUJARAT
	GWB	GANGETIC WEST BENGAL
	HARY	HARYANA

	DLH	DELHI
	HP	HIMACHAL PRADESH
	J&K	JAMMU AND KASHMIR
	JHRKND	JHARKHAND
	KER	KERALA
	KKN	KONKAN
	LKSDP	LAKSHADWEEP
	M MAHA	MADHYA MAHARASHTRA
	MAHA	MAHARASHTRA
	MANI	MANIPUR
	MEGHA	MEGHALAYA
	MIZO	MIZORAM
	MP	MADHYA PRADESH
	MRTHWD	MARATHWADA
	NAGA	NAGALAND
	N COTL AP	NORTH COASTAL ANDHRA PRADESH
	NIK	NORTH INTERIOR KARNATAKA
	ORS	ORISSA
	PJB	PUNJAB
	RAJ	RAJASTHAN
	RYLSM	RAYALASEEMA
	SAU & KUTCH	SAURASHTRA & KUTCH
	SHWB	SUB-HIMALAYAN WEST BENGAL
	SIK	SOUTH INTERIOR KARNATAKA
	SKM	SIKKIM
	TLNGN	TELANGANA
	TN	TAMIL NADU
	TRP	TRIPURA
	UP	UTTAR PRADESH
	UTRKN	UTTARAKHAND
	VID	VIDHARBHA
	SHWB	SUB HIMALAYAN WEST BENGAL
	GWB	GANGETIC WEST BENGAL
	ARSEA	ARABIAN SEA
	ILS	ISLANDS
MISCELLANEOUS	ASSW	IN ASSOCIATION WITH
	ASSTD	ASSOCIATED
	LLC	LOW LEVEL CIRCULATION
	EMBDD	EMBEDDED
	N/HOOD	NEIGHBOURHOOD
	EXT	EXTREME