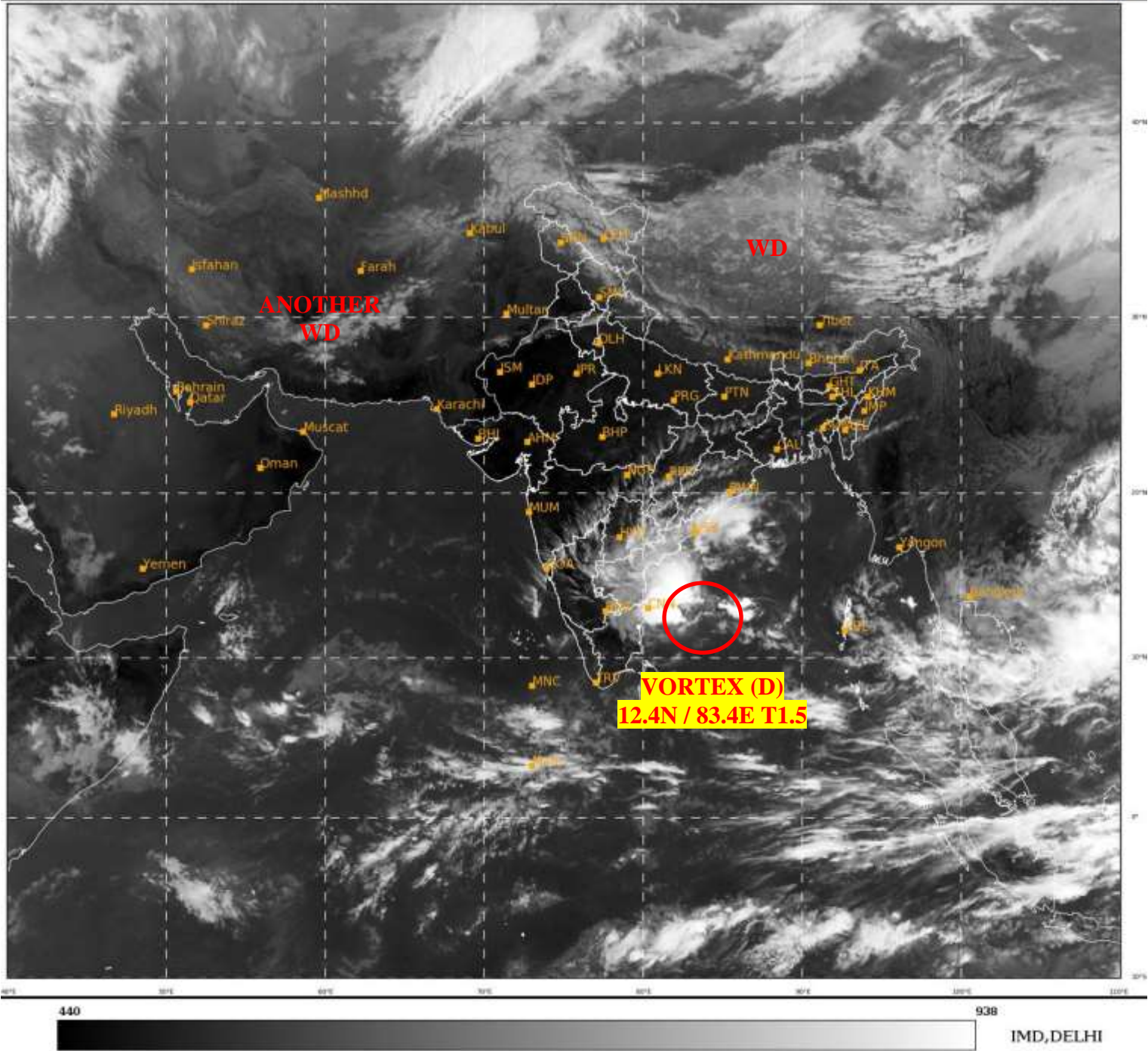




**SATELLITE BULLETIN BASED ON SATELLITE  
IMAGERIES AND PRODUCTS**  
**21.11.2022 TIME 0600 UTC**

SAT : INSAT-3D IMG  
IMG\_TIR1 10.8 um  
LIC Mercator

21-11-2022/(0600 to 0627) GMT  
21-11-2022/(1130 to 1157) IST



TCIN50 DEMS 210600

SATELLITE BULLETIN BASED ON INSAT-3D PIC OF 210600 UTC (.)

REGION COVERED BETWEEN LAT 50.0°N TO 35.0°S AND LONG 40.0°E TO 125.0°E (.)

**SALIENT FEATURES:-**

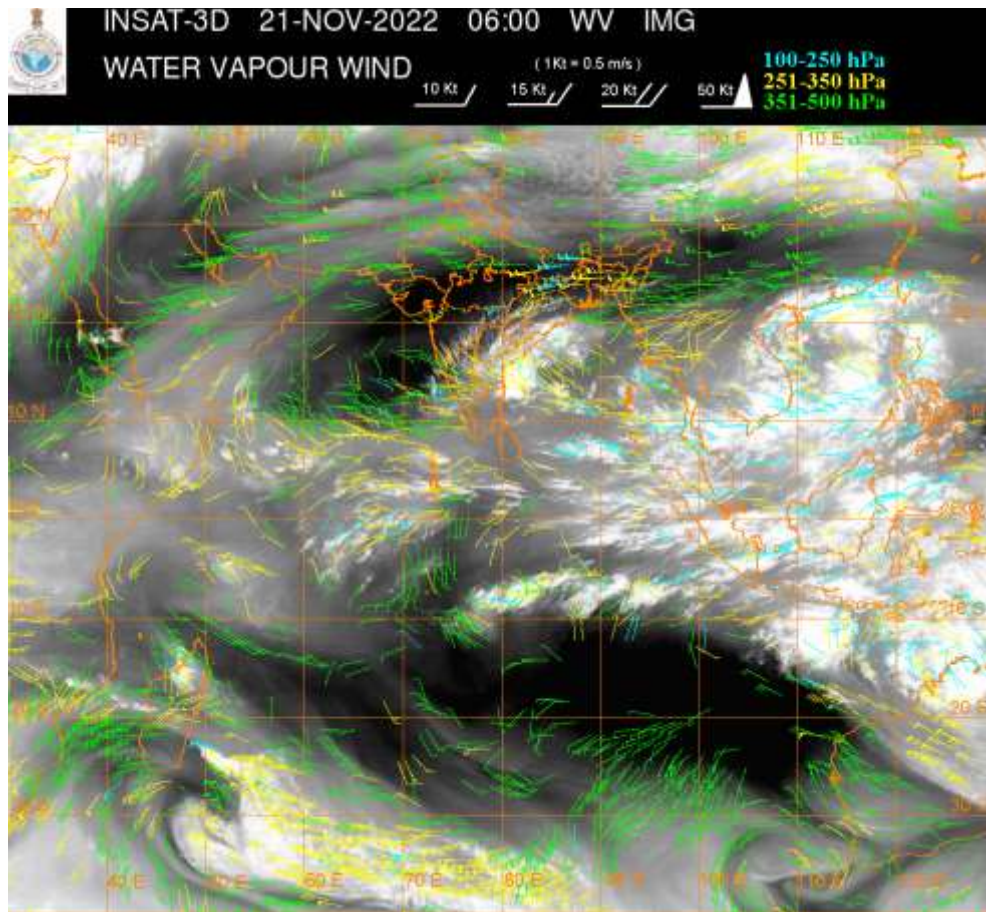
**VORTEX (D) OVER SOUTH-WEST BAY AND N/HOOD:-**

VORTEX (D) OVER SW BAY & N/HOOD CENTERED WITHIN HALF A DEGREE OF **12.4N / 83.4E** (.)  
INTENSITY **T1.5** (.) ASSTD SCT TO BKN LOW/MED CLOUDS WITH EMBDD INT TO V INT  
CONVTN OVER SW ADJ WC BAY BET LAT 11.0N TO 16.0N AND LONG 80.0E TO 87.0E NE TN &  
COTL AP (.) MINIMUM CTT **MINUS 93** DEGREE CEL (.)

## **WESTERN DISTURBANCE (WD):-**

SCT MULTILAYERED CLOUDS OVER E TIBET ADJ CHINA IN ASSW **WD** OVER THE AREA (.)

SCT MULTILAYERED CLOUDS OVER E IRAN & N/HOOD IN ASSW **ANOTHER WD** OVER THE AREA (.)



## **CLOUDS DESCRIPTION WITHIN INDIA:-**

### **NORTH:-**

SCT LOW/MED CLOUDS WITH EMBDD WK TO MOD CONVTN OVER LADAKH N HP N UTRKND N HARY EXT NW UP (.) ISOL TO SCT LOW/MED CLOUDS OVER J&K S HP S UTRKND S PJB (.)

### **EAST:-**

SCT LOW/MED CLOUDS WITH EMBDD MOD TO INT CONVTN OVER S CHTGH S ORS (.) SCT LOW/MED CLOUDS WITH EMBDD WK TO MOD CONVTN OVER N JHRKND N CHTGH N ORS N GWB NW ARUPR S MANI MIZO TRP & C BD (.) SCT LOW/MED CLOUDS OVER BHR S JHRKND S GWB SHWB SKM REST NE STATES (.)

### **WEST:-**

SCT LOW/MED CLOUDS WITH EMBDD WK TO MOD CONVTN OVER NW RAJ SE MP MAHA (.) SCT LOW/MED CLOUDS OVER GOA (.)

### **SOUTH:-**

SCT TO BKN LOW/MED CLOUDS WITH EMBDD MOD TO INT CONVTN OVER S TLNGN RYLSM COTL AP NE TN (.) SCT LOW/MED CLOUDS WITH EMBDD WK TO MOD CONVTN OVER NIK SIK N TLNGN ANDAMAN & NICOBAR ILS (.) SCT LOW/MED CLOUDS OVER COTL KRNTK KER REST TN LKSDP ILS (.)

### **ARABIAN SEA:-**

SCT LOW/MED CLOUDS WITH EMBDD MOD TO INT CONVTN OVER CENTRAL & SOUTH ARSEA AND COMORIN AREA (.)

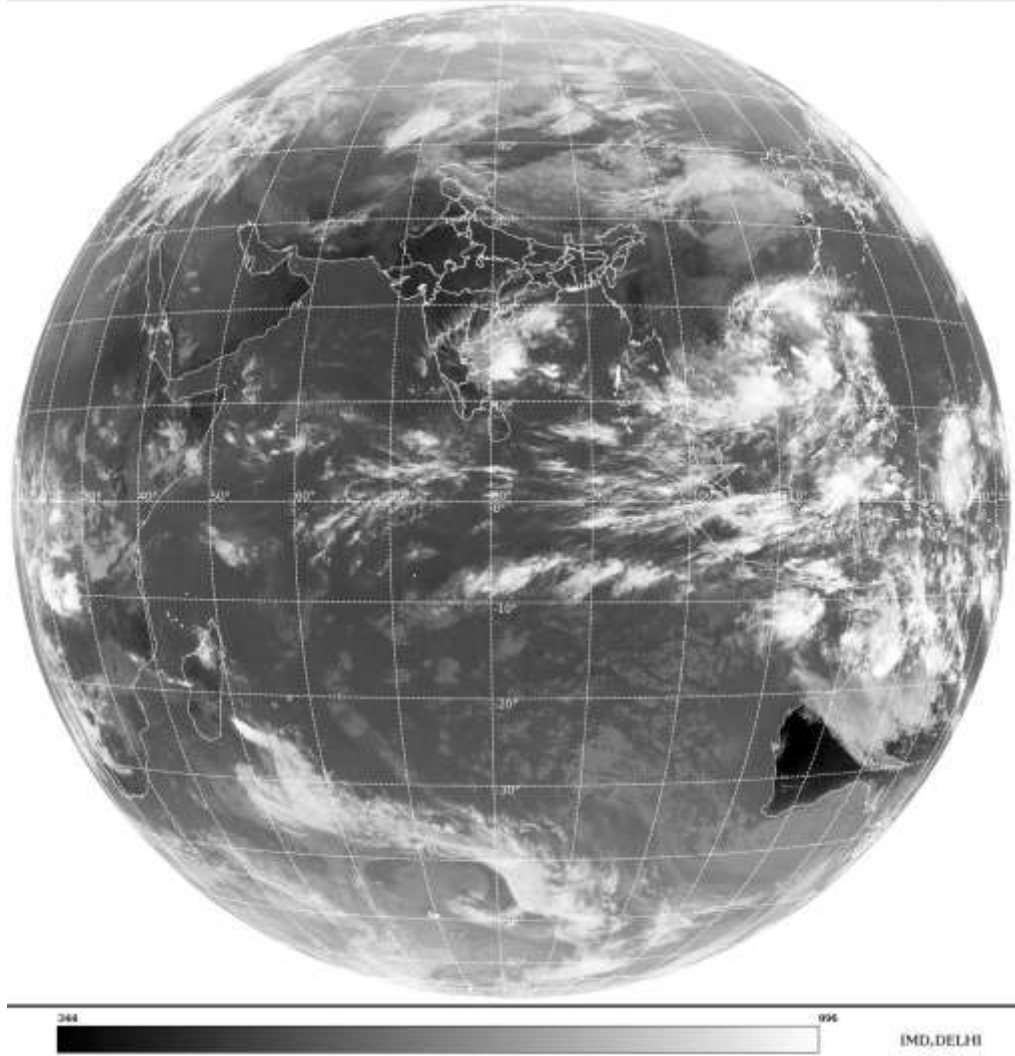
### **BAY OF BENGAL & ANDAMAN SEA:-**

SCT TO BKN LOW/MED CLOUDS WITH EMBDD INT TO V INT CONVTN OVER WC ADJ SW BAY (.) SCT LOW/MED CLOUDS WITH EMBDD MOD TO INT CONVTN OVER NW BAY REST SOUTH BAY AND ANDAMAN SEA (.)

**CLOUDS DESCRIPTION OUTSIDE INDIA:-**

SAT : INSAT-3D IMG  
Thermal Infrared1 Count 10.8 um  
L1B FULL DISK

21-11-2022/(0600 to 0627) GMT  
21-11-2022/(1130 to 1157) IST



**SCT LOW/MED CLOUDS WITH EMBDD MOD TO INT CONVTN OVER MALDIVES TIBET CHINA YELLOW SEA TAIWAN S MYANMAR THAILAND GULF OF THAILAND CAMBODIA LAOS VIETNAM GULF OF TONKIN HAIANAN SUMATRA STR OF MALACCA MALAYSIA BORNEO SOUTH CHINA SEA JAVA ILS & SEA CELEBES ILS & SEA PHILIPPINES SULU SEA N MADAGASCAR AND OVER INDIAN OCEAN BET LAT 5.0N TO 10.0S LONG 50.0E TO 120.0E AND BET LAT 9.0S TO 20.0S LONG 107.0E TO 125.0E (.)**

**TOO 21/1250 HRS IST=**

**NNNN**

**LEGEND:-**

<b>REGION</b>	<b>NORTH</b>	<b>J&amp;K HP PJB HARY DLH UP UTRKND</b>
	<b>EAST</b>	<b>BHR JHRKND CHTGH OR WB SKM NORTH- EAST STATES</b>
	<b>WEST</b>	<b>RAJ MP GUJ MAHA GOA</b>
	<b>SOUTH</b>	<b>TLNGN AP KRNTK KER TN LKSDP ANDAMAN &amp; NICOBAR ILS</b>

<b>CLOUD DISTRIBUTION</b>	<b>ISOL</b>	<b>ISOLATED (LESS THAN 25%)</b>
	<b>SCT</b>	<b>SCATTERED (25 TO 50%)</b>
	<b>BKN</b>	<b>BROKEN (51 TO 75%)</b>
	<b>SLD</b>	<b>SOLID (GREATER THAN 75%)</b>
<b>CLOUDS TOP TEMPERATURE</b>	<b>CTT</b>	<b>CLOUD TOP TEMPERATURE</b>
<b>CONVECTION</b>	<b>WK CONVTN</b>	<b>WEAK CONVECTION (CTT GREATER THAN -25°C)</b>
	<b>MOD CONVTN</b>	<b>MODERATE CONVECTION (CTT BETWEEN -25°C TO -40°C)</b>
	<b>INT CONVTN</b>	<b>INTENSE CONVECTION (CTT BETWEEN -41°C TO -70°C)</b>
	<b>V INT CONVTN</b>	<b>VERY INTENSE CONVECTION (CTT LESS THAN -70°C)</b>
<b>METEOROLOGICAL SUB-DIVISIONS, STATES &amp; UNION TERRITORIES</b>	<b>ARUPR</b>	<b>ARUNACHAL PRADESH</b>
	<b>BHR</b>	<b>BIHAR</b>
	<b>CHTGH</b>	<b>CHHATTISGARH</b>
	<b>COTL AP</b>	<b>COASTAL ANDHRA PRADESH</b>
	<b>COTL KRNTK</b>	<b>COASTAL KARNATAKA</b>
	<b>COTL ORS</b>	<b>COASTAL ORISSA</b>
	<b>GUJ</b>	<b>GUJARAT</b>
	<b>GWB</b>	<b>GANGETIC WEST BENGAL</b>
	<b>HARY</b>	<b>HARYANA</b>
	<b>DLH</b>	<b>DELHI</b>
	<b>HP</b>	<b>HIMACHAL PRADESH</b>
	<b>J&amp;K</b>	<b>JAMMU AND KASHMIR</b>
	<b>JHRKND</b>	<b>JHARKHAND</b>
	<b>KER</b>	<b>KERALA</b>
	<b>KKN</b>	<b>KONKAN</b>
	<b>LKSDP</b>	<b>LAKSHADWEEP</b>
	<b>M MAHA</b>	<b>MADHYA MAHARASHTRA</b>
	<b>MAHA</b>	<b>MAHARASHTRA</b>
	<b>MANI</b>	<b>MANIPUR</b>
	<b>MEGHA</b>	<b>MEGHALAYA</b>
	<b>MIZO</b>	<b>MIZORAM</b>
	<b>MP</b>	<b>MADHYA PRADESH</b>
	<b>MRTHWD</b>	<b>MARATHWADA</b>
	<b>NAGA</b>	<b>NAGALAND</b>
	<b>N COTL AP</b>	<b>NORTH COASTAL ANDHRA PRADESH</b>
	<b>NIK</b>	<b>NORTH INTERIOR KARNATAKA</b>
	<b>ORS</b>	<b>ORISSA</b>
	<b>PJB</b>	<b>PUNJAB</b>
	<b>RAJ</b>	<b>RAJASTHAN</b>
	<b>RYLSM</b>	<b>RAYALASEEMA</b>
	<b>SAU &amp; KUTCH</b>	<b>SAURASHTRA &amp; KUTCH</b>
	<b>SHWB</b>	<b>SUB-HIMALAYAN WEST BENGAL</b>
	<b>SIK</b>	<b>SOUTH INTERIOR KARNATAKA</b>
	<b>SKM</b>	<b>SIKKIM</b>

	<b>TLNGN</b>	<b>TELANGANA</b>
	<b>TN</b>	<b>TAMIL NADU</b>
	<b>TRP</b>	<b>TRIPURA</b>
	<b>UP</b>	<b>UTTAR PRADESH</b>
	<b>UTRKND</b>	<b>UTTARAKHAND</b>
	<b>VID</b>	<b>VIDHARBHA</b>
	<b>SHWB</b>	<b>SUB HIMALAYAN WEST BENGAL</b>
	<b>GWB</b>	<b>GANGETIC WEST BENGAL</b>
	<b>ARSEA</b>	<b>ARABIAN SEA</b>
	<b>ILS</b>	<b>ISLANDS</b>
<b>MISCELLANEOUS</b>	<b>ASSW</b>	<b>IN ASSOCIATION WITH</b>
	<b>ASSTD</b>	<b>ASSOCIATED</b>
	<b>LLC</b>	<b>LOW LEVEL CIRCULATION</b>
	<b>EMBDD</b>	<b>EMBEDDED</b>
	<b>N/HOOD</b>	<b>NEIGHBOURHOOD</b>
	<b>EXT</b>	<b>EXTREME</b>