

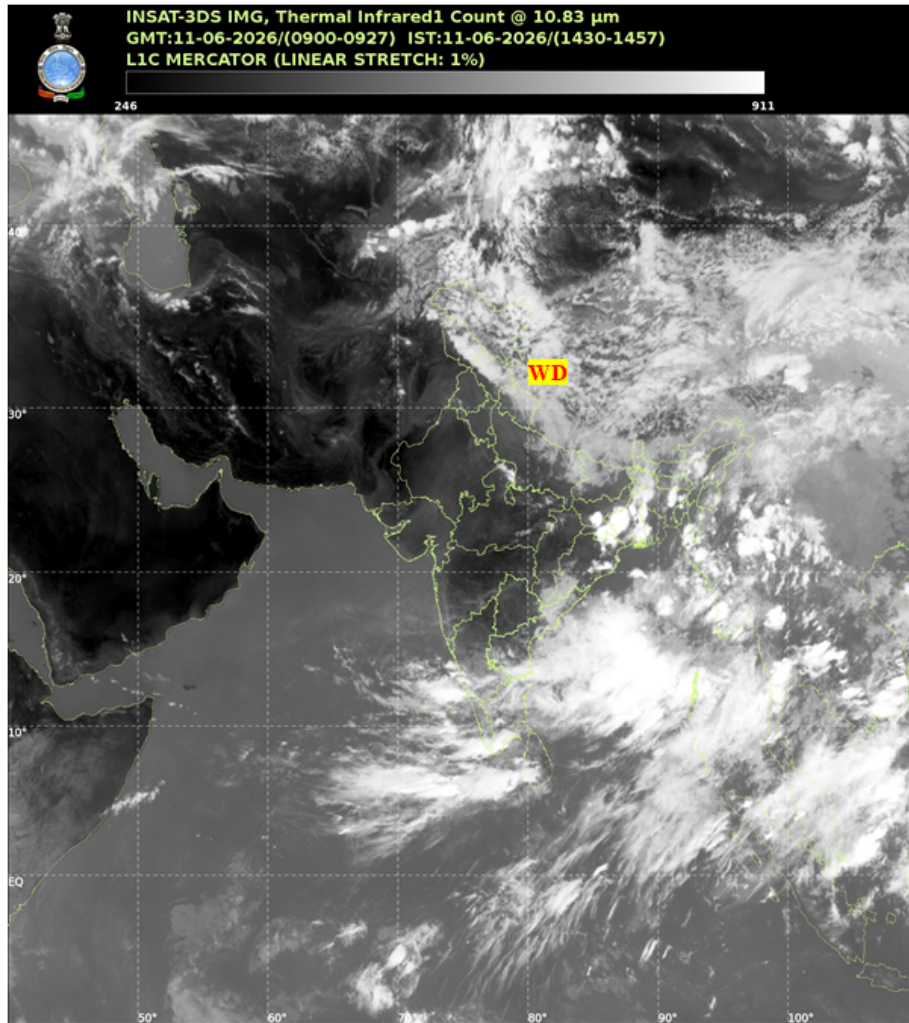


भारत मौसम विज्ञान विभाग
पृथ्वी विज्ञान मंत्रालय
India Meteorological Department
Ministry of Earth Sciences



SATELLITE BULLETIN BASED ON SATELLITE IMAGERIES AND PRODUCTS

Date: 2026-06-11 Time: 09:00:00 UTC



TCIN50 DEMS 110900

SATELLITE BULLETIN BASED ON INSAT-3DS PIC OF 110900 UTC (.)

REGION COVERED BETWEEN LAT 50.0°N TO 35.0°S AND LONG 40.0°E TO 125.0°E (.)

SALIENT FEATURES:

WESTERN DISTURBANCE (WD):-

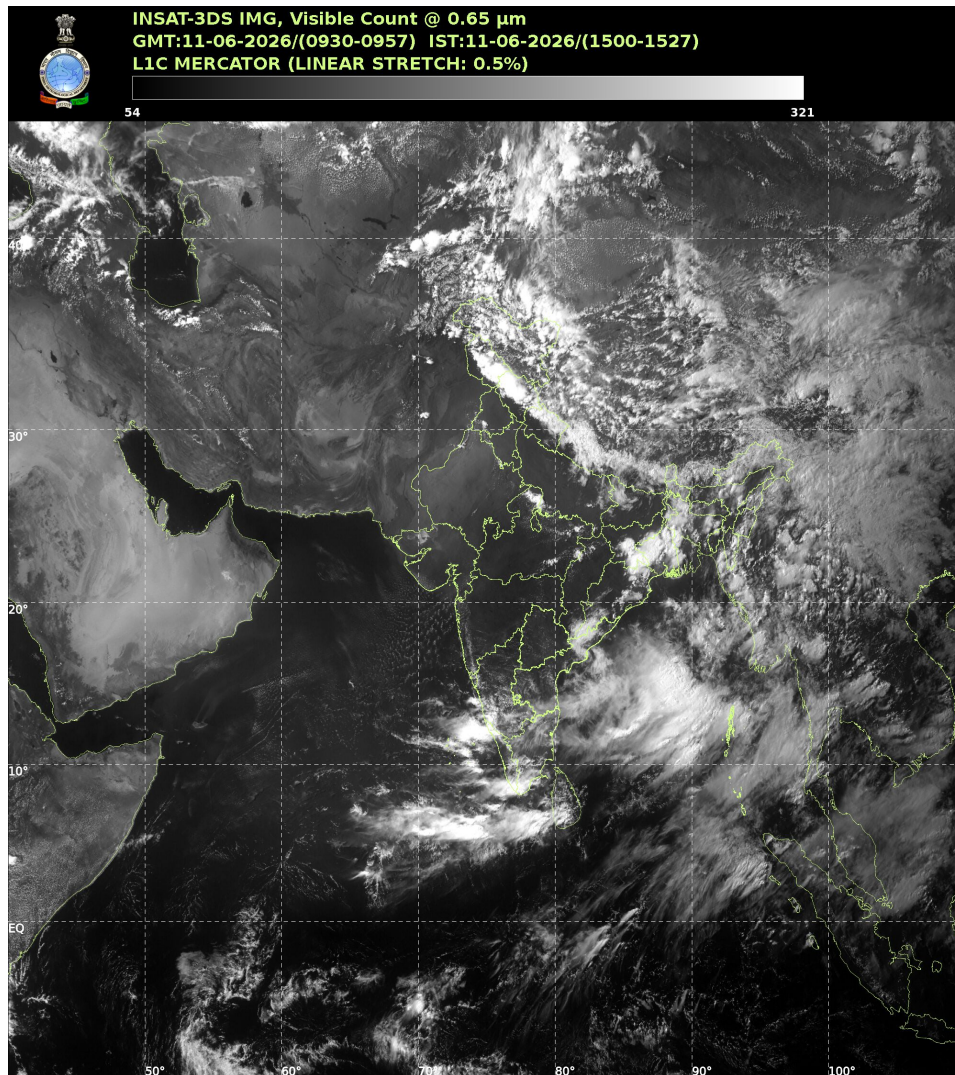
SCT TO BKN MULTILAYERED CLOUDS OVER LADAKH J&K HP UTRKND UP BHR NEPAL TIBET ADJ CHINA IN ASSW WD OVER THE AREA (.)

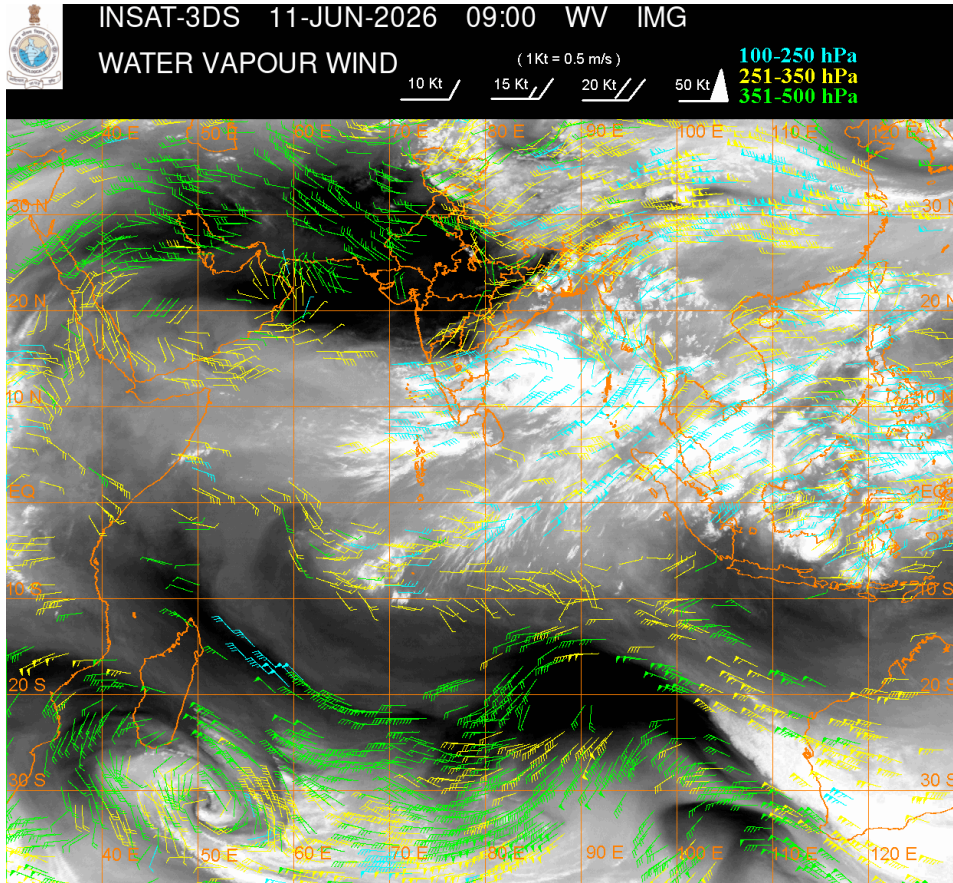
CONVECTIVE / THUNDERSTORM ACTIVITY:-

INTENSE TO VERY INTENSE CONVECTIVE / THUNDERSTORM ACTIVITY OVER JHRKND GWB N ORS

BD ASSAM MEGHA N MP ANDAMAN & NICOBAR ILS AREA (MINIMUM CTT MINUS 70-90 DEGREE CELSIUS) (.)

**MODERATE TO INTENSE CONVECTIVE / THUNDERSTORM ACTIVITY OVER LADAKH J&K HP
UTRKND UP BHR SHWB SKM ARUPR S KER S TN S RYLSM COTL AP COTL KRNTK & LKSDP ILS AREA
(MINIMUM CTT MINUS 50-70 DEGREE CELSIUS) (.)**





CLOUD DESCRIPTION WITHIN INDIA:

NORTH:

SCT TO BKN LOW/MED CLOUDS WITH EMBDD MOD TO INT CONVTN OVER LADAKH J&K HP UTRKND UP (.) SCT LOW/MED CLOUDS WITH EMBDD ISOL WK TO MOD CONVTN OVER S PJB NW HARY (.) SCT LOW/MED CLOUDS OVER REST HARY (.)

EAST:

SCT TO BKN LOW/MED CLOUDS WITH EMBDD INT TO V INT CONVTN OVER MEGHA ASSAM JHRKND N ORS (.) SCT LOW/MED CLOUDS WITH EMBDD MOD TO INT CONVTN OVER BHR SHWB SKM ARUPR AND ISOL WK TO MOD CONVTN OVERN CHTGH REST NE STATES (.)

WEST:

SCT LOW/MED CLOUDS WITH EMBDD INT TO V INT CONVTN OVER N MP (.) SCT LOW/MED CLOUDS WITH EMBDD MOD TO INT CONVTN OVER EAST MP (.)SCT LOW/MED CLOUDS WITH EMBDD WK CONVTN OVER N RAJ GUJ MAHA & GOA (.)

SOUTH:

SCT TO BKN LOW/MED CLOUDS WITH EMBDD INT TO V INT CONVTN OVER SOUTH COTL AP ANDAMAN & NICOBAR ILS AREA AND MOD TO INT CONVTN OVER S KER S TN S RYLSMA N COTL AP COTL KRNTK & LKSDP ILS AREA (.) SCT LOW/MED CLOUDS WITH EMBDD ISOL WK TO MOD CONVTN OVER N KER N TN TLNGN N RYLSM (.) SCT LOW/MED CLOUDS OVER REST KRNTK(.)

ARABIAN SEA:

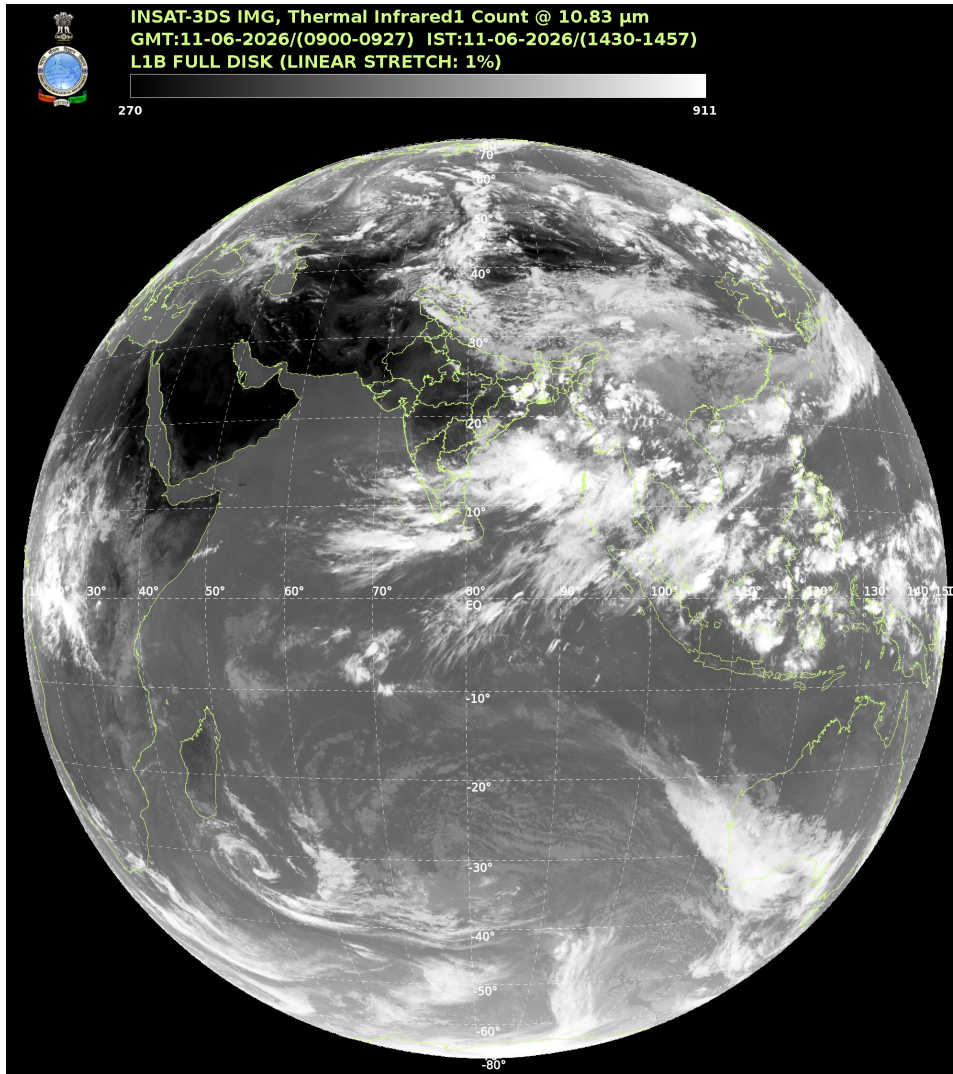
SCT TO BKN LOW/MED CLOUDS WITH EMBDD MOD TO INT CONVTN OVER SE ADJ EC ARSEA LKSDP ILS AREA MALDIVES & COMORIN AREA (.) SCT LOW/MED CLOUDS WITH EMBDD ISOL WK TO MOD CONVTN OVER SW ARSEA (.)

BAY OF BENGAL & ANDAMAN SEA:

SCT TO BKN LOW/MED CLOUDS WITH EMBDD INT TO V INT CONVTN OVER CENTRAL & SOUTH BAY ANDAMAN SEA GULF OF MARTABAN ARAKAN COAST (.) SCT LOW/MED CLOUDS WITH

EMBDD MOD TO INT CONVTN OVER REST BAY (.)

CLOUD DESCRIPTION OUTSIDE INDIA:



SCT LOW/MED CLOUDS WITH EMBDD MOD TO INT CONVTN OVER SRILANKA MALDIVES NEPAL BHUTAN TIBET CHINA MYANMAR THAILAND GULF OF THAILAND CAMBODIA LAOS VIETNAM HAINAN TAIWAN SUMATRA STR OF MALACCA MALAYSIA BORNEO SOUTH CHINA SEA CELEBES ILS & SEA PHILIPPINES AND OVER INDIAN OCEAN BET LAT 5.0N TO 10.0S LONG 50.0E TO 100.0E AND BET LAT 20.0S TO 35.0S LONG 40.0E TO 90.0E (.)

T00 11/1530 HRS IST

NNNN

LEGEND

| REGION | |
|--------------------|---|
| NORTH | J&K HP UTRKND PJB HARY DLH UP |
| EAST | BHR JHRKND CHTGH ORS WB SKM NORTH-EAST STATES |
| WEST | RAJ MP GUJ MAHA GOA |
| SOUTH | TLNGN AP KRNTK KER TN LKSDP ANDAMAN & NICOBAR ILS |
| CLOUD DISTRIBUTION | |

| | |
|---|---|
| ISOL | ISOLATED (LESS THAN 25%) |
| SCT | SCATTERED (25 TO 50%) |
| BKN | BROKEN (51 TO 75%) |
| SLD | SOLID (GREATER THAN 75%) |
| CLOUDS TOP TEMPERATURE | |
| CTT | CLOUD TOP TEMPERATURE |
| CONVECTION | |
| WK CONVTN | WEAK CONVECTION (CTT GREATER THAN -25°C) |
| MOD CONVTN | MODERATE CONVECTION (CTT BETWEEN -25°C TO -40°C) |
| INT CONVTN | INTENSE CONVECTION (CTT BETWEEN -41°C TO -70°C) |
| V INT CONVTN | VERY INTENSE CONVECTION (CTT LESS THAN -70°C) |
| METEOROLOGICAL SUB-DIVISIONS, STATES & UNION TERRITORIES | |
| J&K | JAMMU AND KASHMIR |
| HP | HIMACHAL PRADESH |
| UTRKND | UTTARAKHAND |
| PJB | PUNJAB |
| HARY | HARYANA |
| DLH | DELHI |
| BHR | BIHAR |
| JHRKND | JHARKHAND |
| CHTGH | CHHATTISGARH |
| ORS | ORISSA |
| GWB | GANGETIC WEST BENGAL |
| SHWB | SUB-HIMALAYAN WEST BENGAL |
| SKM | SIKKIM |
| ARUPR | ARUNACHAL PRADESH |
| ASSAM | ASSAM |
| MEGHA | MEGHALAYA |
| MANI | MANIPUR |
| MIZO | MIZORAM |
| TRP | TRIPURA |
| RAJ | RAJASTHAN |
| MP | MADHYA PRADESH |
| GUJ | GUJARAT |

| | |
|------------------------|---------------------------------|
| SAU & KUTCH | SAURASHTRA & KUTCH |
| MAHA | MAHARASHTRA |
| M MAHA | MADHYA MAHARASHTRA |
| MRTHWD | MARATHWADA |
| VID | VIDARBHA |
| KKN | KONKAN |
| TLNGN | TELANGANA |
| RYLSM | RAYALSEEMA |
| COTL AP | COASTAL ANDHRA PRADESH |
| NIK | NORTH INTERIOR KARNATAKA |
| SIK | SOUTH INTERIOR KARNATAKA |
| COTL KRNTK | COASTAL KARNATAKA |
| KER | KERALA |
| TN | TAMILNADU |
| LKSDP | LAKSHADWEEP |
| ILS | ISLANDS |
| ARSEA | ARABIAN SEA |
| MISCELLANEOUS | |
| ASSW | IN ASSOCIATION WITH |
| ASSTD | ASSOCIATED |
| LLC | LOW LEVEL CIRCULATION |
| EMBDD | EMBEDDED |
| N/HOOD | NEIGHBOURHOOD |
| EXT | EXTREME |