

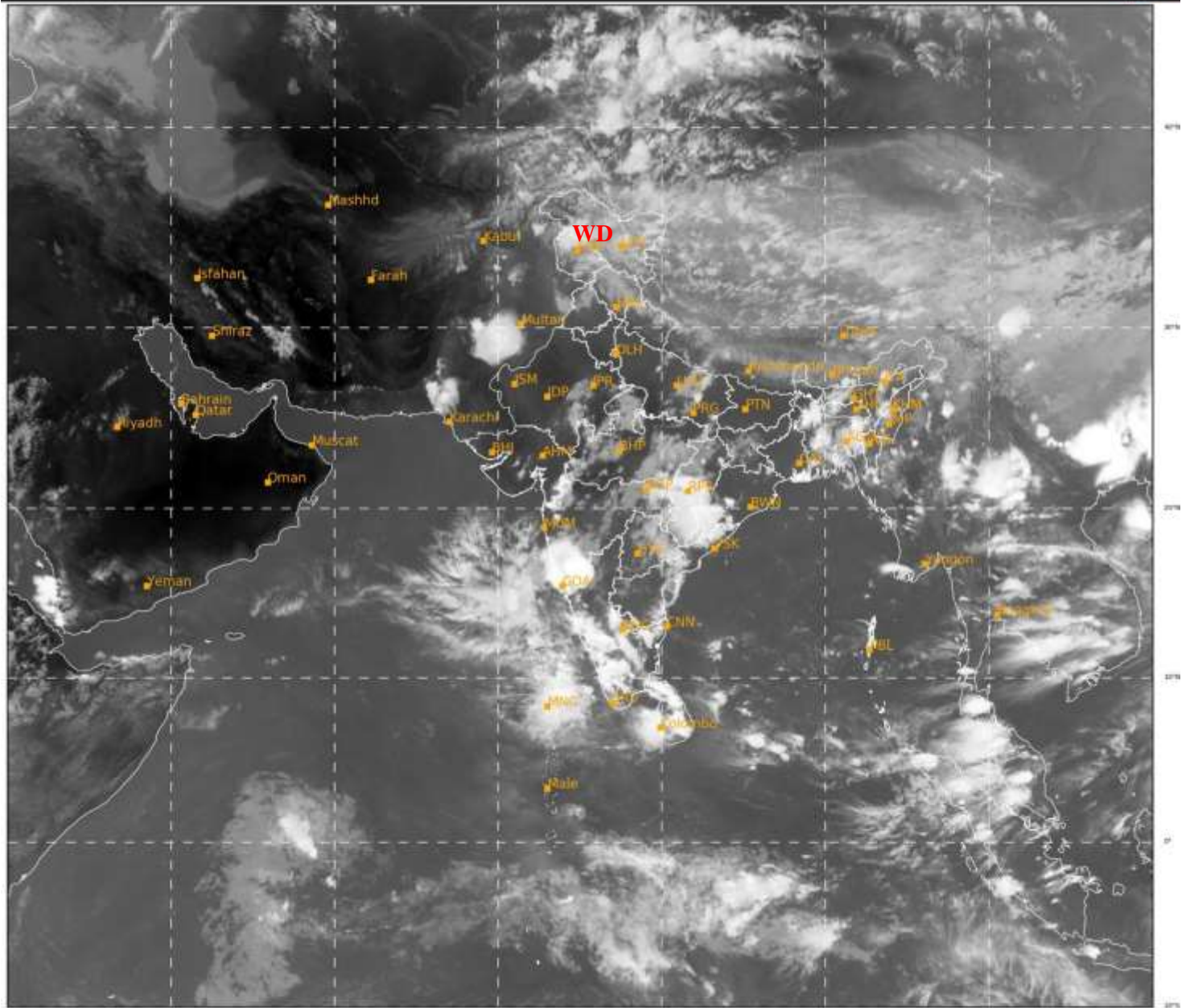


**SATELLITE BULLETIN BASED ON SATELLITE IMAGERIES
AND PRODUCTS**

03.06.2021 TIME 1200 UTC

SAT : INSAT-3D IMG
IMG_TIR1 10.8 um
LIC Mercator

03-06-2021/(1200 to 1226) GMT
03-06-2021/(1730 to 1756) IST



274

947

IMD, DELHI

TCIN50 DEMS 031200

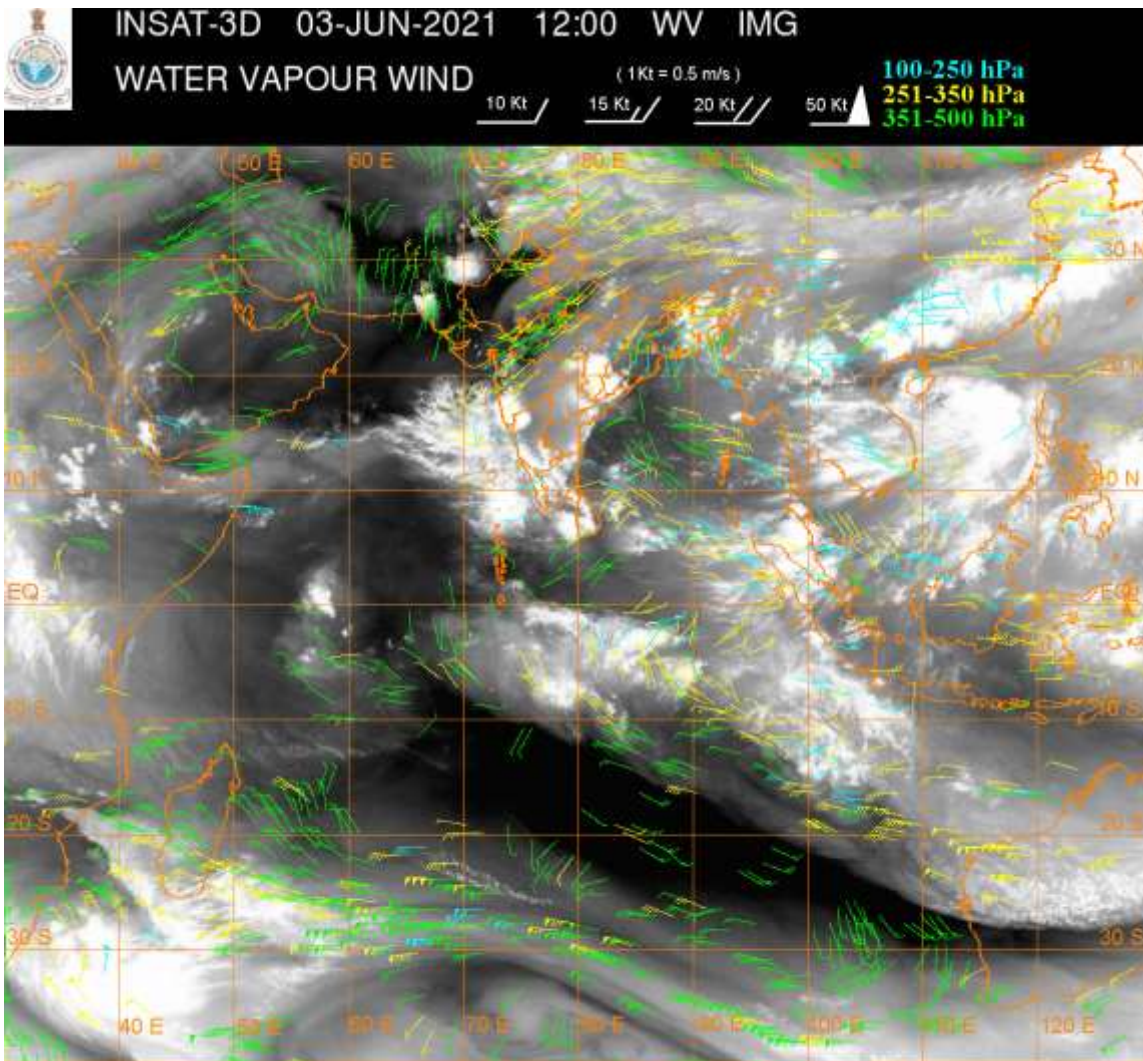
SATELLITE BULLETIN BASED ON INSAT-3D PIC OF 031200 UTC (.)

REGION COVERED BETWEEN LAT 50.0°N TO 30.0°S AND LONG 40.0°E TO 125.0°E (.)

SALIENT FEATURES:-

WESTERN DISTURBANCE (WD):-

SCT MULTILAYERED CLOUDS OVER J&K LADAKH HP N UTRKND TIBET CHINA IN ASSW **WD** OVER THE AREA (.)



CLOUDS DESCRIPTION WITHIN INDIA:-

NORTH:-

SCT LOW/MED CLOUDS WITH EMBDD MOD TO INT CONVTN OVER N J&K ADJ NW& EXT NE LADAKH EC UP AND WK TO MOD CONVTN OVER S J&K REST LADAKH HP NW PJB EXT N UTRKND REST E UP (.) ISOL TO SCT LOW/MED CLOUDS OVER S UTRKND (.)

EAST:-

SCT TO BKN LOW/MED CLOUDS WITH EMBDD INT TO V INT CONVTN OVER C&S CHTGH S ORS TRP & BD AND MOD TO INT CONVTN OVER EXT S SHWB W MEGHA EXT PARTS OF ASSAM EXT S ARUPR & EXT PARTS OF MIZO (.) SCT LOW/MED CLOUDS WITH EMBDD WK TO MOD CONVTN OVER N CHTGH C JHRKND SKM & REST NE STATES(.)

WEST:-

SCT LOW/MED CLOUDS WITH EMBDD INT TO V INT CONVTN OVER EXT SOUTH OF MADHYA MAHA ADJ S KKN & GOA (.)SCT LOW/MED CLOUDS WITH EMBDD MOD TO INT CONVTN OVER EXT S MP E VID EXT NW MADHYA MAHA SC GUJ (.)SCT LOW/MED CLOUDS WITH EMBDD WK TO MOD CONVTN OVER EC RAJ REST MP REST MAHA (.)

SOUTH:-

SCT LOW/MED CLOUDS WITH EMBDD INT TO V INT CONVTN OVER NE NIK SOUTH OF SIK S COTL KRNTK KER ADJ W TN (.) SCT LOW/MED CLOUDS WITH EMBDD MOD TO INT CONVTN OVER N COTL AP NE TN LKSDP ILS (.) SCT LOW/MED CLOUDS WITH EMBDD WK TO MOD CONVTN OVER REST KRNTK NC RYLSM S COTL AP E TLNGN SE TN (.) SCT LOW/MED CLOUDS OVER ANDAMAN NICOBAR ILS(.)

ARABIAN SEA:-

SCT LOW/MED CLOUDS WITH EMBDD INT TO V INT CONVTN OVER SE & EC ARSEA OFF KKN-GOA COAST (.)SCT LOW/MED CLOUDS WITH EMBDD MOD TO INT CONVTN OVER REST EC ARSEA (.)

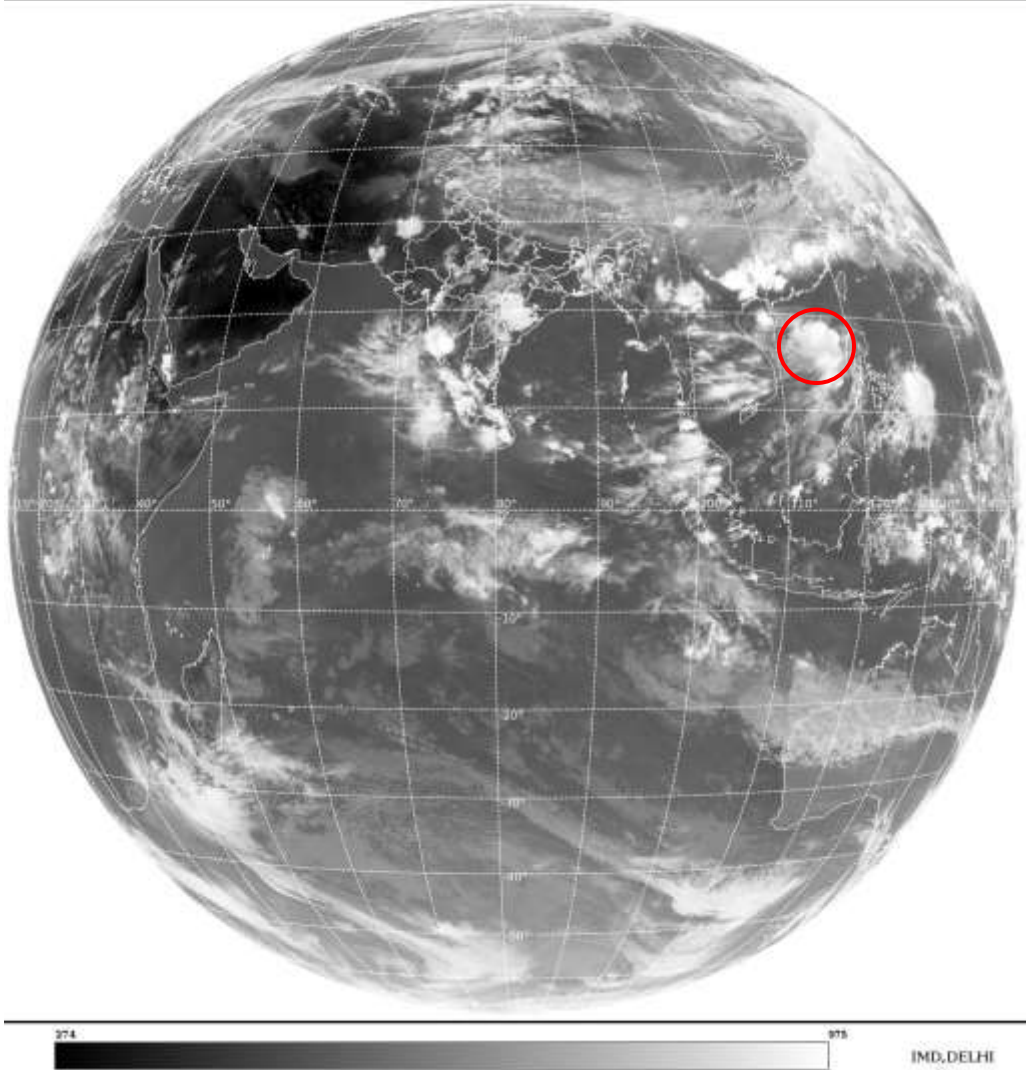
BAY OF BENGAL & ANDAMAN SEA:-

SCT LOW/MED CLOUDS WITH EMBDD MOD TO INT CONVTN OVER SC & EXT NE BAY S (.)SCT LOW/MED CLOUDS WITH EMBDD WK TO MOD TO CONVTN OVER S ANDAMAN SEA (.)

CLOUDS DESCRIPTION OUTSIDE INDIA:-

SAT : INSAT-3D IMG
Thermal Infrared1 Count 10.8 um
LIB FULL DISK

03-06-2021/(1200 to 1228) GMT
03-06-2021/(1730 to 1756) IST



VORTEX (CHOI-WAN) OVER SOUTH CHINA SEA:-

VORTEX (**CHOI-WAN**) OVER SOUTH CHINA SEA CENTERED NEAR **18.4N/118.4E** (.) INTENSITY **T2.5/2.5** (.) ASSTD BKN LOW/MED CLOUDS WITH EMBDD INT TO V INT CONVTN OVER AREA BET LAT 12.5N TO 19.5N AND LONG 112.0E TO 118.5E (.)

SCT LOW/MED CLOUDS WITH EMBDD MOD TO INT CONVTN OVER SW SRI LANKA N MALDIVES TIBET CHINA YELLOW SEA E CHINA SEA N MYANMAR THAILAND GULF OF THAILAND LAOS VIETNAM HAINAN SUMATRA ADJ W COAST STR OF MALACCA MALAY PENINSULA S CHINA SEA W JAVA SEA N BORNEO CELEBES ILS PHILIPPINES SULU SEA S MADAGASCAR S MOZAMBIQUE CHANNEL AND OVER INDIAN OCEAN BET LAT 5.0N TO 15.0S LONG 72.0E TO 107.0E (.)

TOO03/1835EF=

NNNN

LEGEND:-

REGION	NORTH	J&K HP PJB HARY DLH UP UTRKND
	EAST	BHR JHRKND CHTGH ORS WB SKMNORTH-EAST STATES
	WEST	RAJ MP GUJ MAHA GOA
	SOUTH	TLNGN AP KRNTK KER TN LKSDP ANDAMAN & NICOBAR ILS

CLOUD DISTRIBUTION	ISOL	ISOLATED (LESS THAN 25%)
	SCT	SCATTERED (25 TO 50%)
	BKN	BROKEN (51 TO 75%)
	SLD	SOLID (GREATER THAN 75%)
CLOUDS TOP TEMPERATURE	CTT	CLOUD TOP TEMPERATURE
CONVECTION	WK CONVTN	WEAK CONVECTION (CTT GREATER THAN -25°C)
	MOD CONVTN	MODERATE CONVECTION (CTT BETWEEN -25°C TO -40°C)
	INT CONVTN	INTENSE CONVECTION (CTT BETWEEN -41°C TO -70°C)
	V INT CONVTN	VERY INTENSE CONVECTION (CTT LESS THAN -70°C)
METEOROLOGICAL SUB-DIVISIONS, STATES & UNION TERRITORIES	ARUPR	ARUNACHAL PRADESH
	BHR	BIHAR
	CHTGH	CHHATTISGARH
	COTL AP	COASTAL ANDHRA PRADESH
	COTL KRNTK	COASTAL KARNATAKA
	COTL ORS	COASTAL ORISSA
	GUJ	GUJARAT
	GWB	GANGETIC WEST BENGAL
	HARY	HARYANA
	DLH	DELHI
	HP	HIMACHAL PRADESH
	J&K	JAMMU AND KASHMIR
	JHRKND	JHARKHAND
	KER	KERALA
	KKN	KONKAN
	LKSDP	LAKSHADWEEP
	M MAHA	MADHYA MAHARASHTRA
	MAHA	MAHARASHTRA
	MANI	MANIPUR
	MEGHA	MEGHALAYA
MIZO	MIZORAM	
MP	MADHYA PRADESH	

	MRTHWD	MARATHWADA
	NAGA	NAGALAND
	N COTL AP	NORTH COASTAL ANDHRA PRADESH
	NIK	NORTH INTERIOR KARNATAKA
	ORS	ORISSA
	PJB	PUNJAB
	RAJ	RAJASTHAN
	RYLSM	RAYALASEEMA
	SAU & KUTCH	SAURASHTRA & KUTCH
	SHWB	SUB-HIMALAYAN WEST BENGAL
	SIK	SOUTH INTERIOR KARNATAKA
	SKM	SIKKIM
	TLNGN	TELANGANA
	TN	TAMIL NADU
	TRP	TRIPURA
	UP	UTTAR PRADESH
	UTRKN D	UTTARAKHAND
	VID	VIDHARBHA
	SHWB	SUB HIMALAYAN WEST BENGAL
	GWB	GANGETIC WEST BENGAL
	ARSEA	ARABIAN SEA
	ILS	ISLANDS
MISCELLANEOUS	ASSW	IN ASSOCIATION WITH
	ASSTD	ASSOCIATED
	LLC	LOW LEVEL CIRCULATION
	EMBDD	EMBEDDED
	N/HOOD	NEIGHBOURHOOD
	EXT	EXTREME