

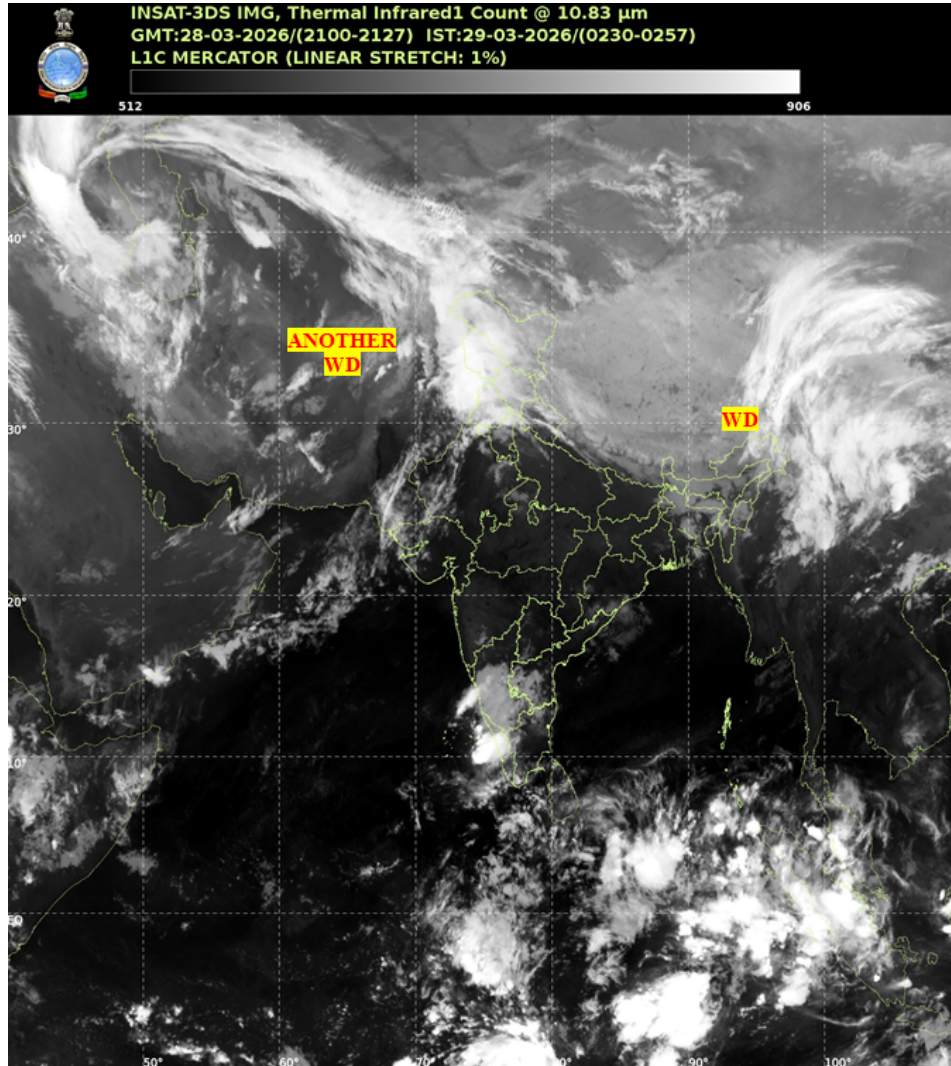


भारत मौसम विज्ञान विभाग  
पृथ्वी विज्ञान मंत्रालय  
India Meteorological Department  
Ministry of Earth Sciences



**SATELLITE BULLETIN BASED ON SATELLITE IMAGERIES AND PRODUCTS**

Date: 2026-03-28 Time: 21:00:00 UTC



TCIN50 DEMS 282100

SATELLITE BULLETIN BASED ON INSAT-3DS PIC OF 282100 UTC (.)

REGION COVERED BETWEEN LAT 50.0°N TO 35.0°S AND LONG 40.0°E TO 125.0°E (.)

**SALIENT FEATURES:**

**WESTERN DISTURBANCE (WD):-**

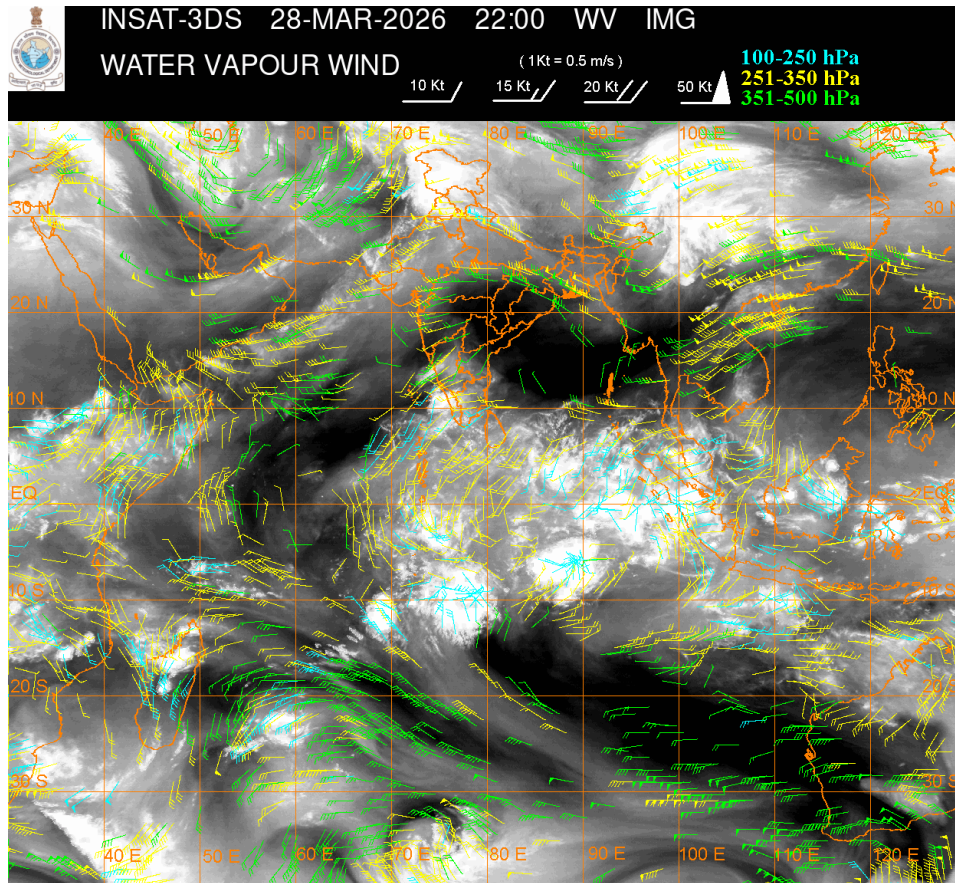
SCT TO BKN MULTILAYERED CLOUDS OVER NORTH-EAST STATES EAST TIBET ADJ CHINA AND N/HOOD IN ASSW WD OVER THE AREA (.)

SCT TO BKN MULTILAYERED CLOUDS OVER CASPIAN SEA IRAN AFGAN PAK LADAKH J&K HP UTRKND PJB HARY NW UP RAJ AND N/HOOD IN ASSW ANOTHER WD OVER THE AREA (.)

**CONVECTIVE / THUNDERSTORM ACTIVITY:-**

**INTENSE TO VERY INTENSE CONVECTIVE / THUNDERSTORM ACTIVITY OBSERVED OVER LADAKH J&K HP PJB KER LKSDP ILS AREA (MINIMUM CTT MINUS 60-80 DEGREE CEL) (.)**

**MODERATE TO INTENSE CONVECTIVE / THUNDERSTORM ACTIVITY OBSERVED OVER UTRKND N HARY W RAJ COTL KRNTK SIK W TN NICOBAR ILS AREA ARUPR (MINIMUM CTT MINUS 40-60 DEGREE CEL) (.)**



**CLOUD DESCRIPTION WITHIN INDIA:**

**NORTH:**

**SCT TO BKN LOW/MED CLOUDS WITH EMBDD INT TO V INT CONVTN OVER LADAKH J&K HP PJB AND MOD TO INT CONVTN OVER UTRKND N HARY (.) SCT LOW/MED CLOUDS WITH EMBDD ISOL WK TO MOD CONVTN OVER S HARY NW UP (.) ISOL TO SCT LOW/MED CLOUDS OVER DLH REST UP (.)**

**EAST:**

**SCT LOW/MED CLOUDS WITH EMBDD MOD TO INT CONVTN OVER ARUPR (.) SCT LOW/MED CLOUDS WITH EMBDD ISOL WK TO MOD CONVTN OVER SHWB SKM REST NE STATES & BD (.) SCT LOW/MED CLOUDS OVER BHR S CHTGH S ORS GWB (.)**

**WEST:**

**SCT LOW/MED CLOUDS WITH EMBDD MOD TO INT CONVTN OVER W RAJ AND ISOL WK TO MOD CONVTN OVER E RAJ W GUJ (.) SCT LOW/MED CLOUDS OVER NW MP SOUTH MADHYA MAHA (.)**

**SOUTH:**

**SCT TO BKN LOW/MED CLOUDS WITH EMBDD INT TO V INT CONVTN OVER KER LKSDP ILS AREA (.) SCT LOW/MED CLOUDS WITH EMBDD MOD TO INT CONVTN OVER COTL KRNTK SIK W TN NICOBAR ILS AREA AND ISOL WK TO MOD CONVTN OVER NIK RYLSM E TN (.) SCT LOW/MED CLOUDS OVER TLNGN COTL AP (.)**

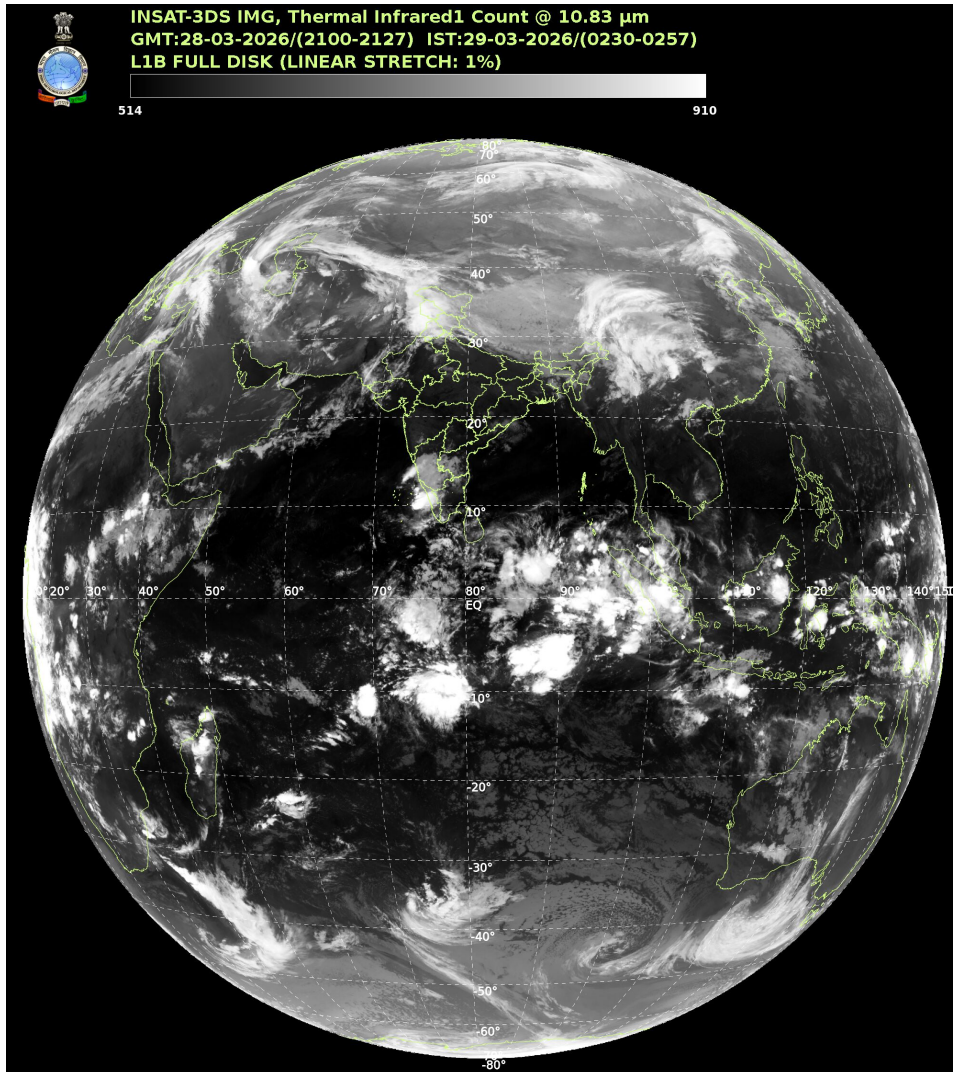
**ARABIAN SEA:**

SCT LOW/MED CLOUDS WITH EMBDD INT TO V INT CONVTN OVER EC & SE ARSEA OFF KRNTK-KER COASTS AND LKSDP ILS AREA (.) SCT LOW/MED CLOUDS WITH EMBDD MOD TO INT CONVTN OVER MALDIVES AND COMORIN AREA AND WK TO MOD CONVTN OVER NORTH & WC ARSEA GULF OF KUTCH (.)

**BAY OF BENGAL & ANDAMAN SEA:**

SCT LOW/MED CLOUDS WITH EMBDD MOD TO INT CONVTN OVER SOUTH BAY AND SOUTH ANDAMAN SEA (.) SCT LOW/MED CLOUDS WITH EMBDD ISOL WK TO MOD CONVTN OVER NW & WC BAY AND NORTH ANDAMAN SEA (.)

**CLOUD DESCRIPTION OUTSIDE INDIA:**



SCT LOW/MED CLOUDS WITH EMBDD MOD TO INT CONVTN OVER SRI LANKA MALDIVES AREA PAK NEPAL BHUTAN TIBET CHINA YELLOW SEA EAST CHINA SEA NORTH MYANMAR LAOS NORTH VIETNAM SUMATRA STR OF MALACCA MALAYSIA BORNEO SOUTH CHINA SEA JAVA ILS & SEA CELEBES ILS & SEA PHILIPPINES SULU SEA MADAGASCAR MOZAMBIQUE CHANNEL AND OVER INDIAN OCEAN BET LAT 5.0N TO LAT 20.0S LONG 40.0E TO 120.0E AND BET LAT 20.0S TO LAT 35.0S LONG 40.0E TO 80.0E (.)

T00 29/0500 HRS IST

NNNN

## LEGEND

REGION	
NORTH	J&K HP UTRKND PJB HARY DLH UP
EAST	BHR JHRKND CHTGH ORS WB SKM NORTH-EAST STATES
WEST	RAJ MP GUJ MAHA GOA
SOUTH	TLNGN AP KRNTK KER TN LKSDP ANDAMAN & NICOBAR ILS
CLOUD DISTRIBUTION	
ISOL	ISOLATED (LESS THAN 25%)
SCT	SCATTERED (25 TO 50%)
BKN	BROKEN (51 TO 75%)
SLD	SOLID (GREATER THAN 75%)
CLOUDS TOP TEMPERATURE	
CTT	CLOUD TOP TEMPERATURE
CONVECTION	
WK CONVTN	WEAK CONVECTION (CTT GREATER THAN -25°C)
MOD CONVTN	MODERATE CONVECTION (CTT BETWEEN -25°C TO -40°C)
INT CONVTN	INTENSE CONVECTION (CTT BETWEEN -41°C TO -70°C)
V INT CONVTN	VERY INTENSE CONVECTION (CTT LESS THAN -70°C)
METEOROLOGICAL SUB-DIVISIONS, STATES & UNION TERRITORIES	
J&K	JAMMU AND KASHMIR
HP	HIMACHAL PRADESH
UTRKND	UTTARAKHAND
PJB	PUNJAB
HARY	HARYANA
DLH	DELHI
BHR	BIHAR
JHRKND	JHARKHAND
CHTGH	CHHATTISGARH
ORS	ORISSA
GWB	GANGETIC WEST BENGAL
SHWB	SUB-HIMALAYAN WEST BENGAL
SKM	SIKKIM
ARUPR	ARUNACHAL PRADESH
ASSAM	ASSAM

<b>MEGHA</b>	<b>MEGHALAYA</b>
<b>MANI</b>	<b>MANIPUR</b>
<b>MIZO</b>	<b>MIZORAM</b>
<b>TRP</b>	<b>TRIPURA</b>
<b>RAJ</b>	<b>RAJASTHAN</b>
<b>MP</b>	<b>MADHYA PRADESH</b>
<b>GUJ</b>	<b>GUJARAT</b>
<b>SAU &amp; KUTCH</b>	<b>SAURASHTRA &amp; KUTCH</b>
<b>MAHA</b>	<b>MAHARASHTRA</b>
<b>M MAHA</b>	<b>MADHYA MAHARASHTRA</b>
<b>MRTHWD</b>	<b>MARATHWADA</b>
<b>VID</b>	<b>VIDARBHA</b>
<b>KKN</b>	<b>KONKAN</b>
<b>TLNGN</b>	<b>TELANGANA</b>
<b>RYLSM</b>	<b>RAYALSEEMA</b>
<b>COTL AP</b>	<b>COASTAL ANDHRA PRADESH</b>
<b>NIK</b>	<b>NORTH INTERIOR KARNATAKA</b>
<b>SIK</b>	<b>SOUTH INTERIOR KARNATAKA</b>
<b>COTL KRNTK</b>	<b>COASTAL KARNATAKA</b>
<b>KER</b>	<b>KERALA</b>
<b>TN</b>	<b>TAMILNADU</b>
<b>LKSDP</b>	<b>LAKSHADWEEP</b>
<b>ILS</b>	<b>ISLANDS</b>
<b>ARSEA</b>	<b>ARABIAN SEA</b>
<b>MISCELLANEOUS</b>	
<b>ASSW</b>	<b>IN ASSOCIATION WITH</b>
<b>ASSTD</b>	<b>ASSOCIATED</b>
<b>LLC</b>	<b>LOW LEVEL CIRCULATION</b>
<b>EMBDD</b>	<b>EMBEDDED</b>
<b>N/HOOD</b>	<b>NEIGHBOURHOOD</b>
<b>EXT</b>	<b>EXTREME</b>