



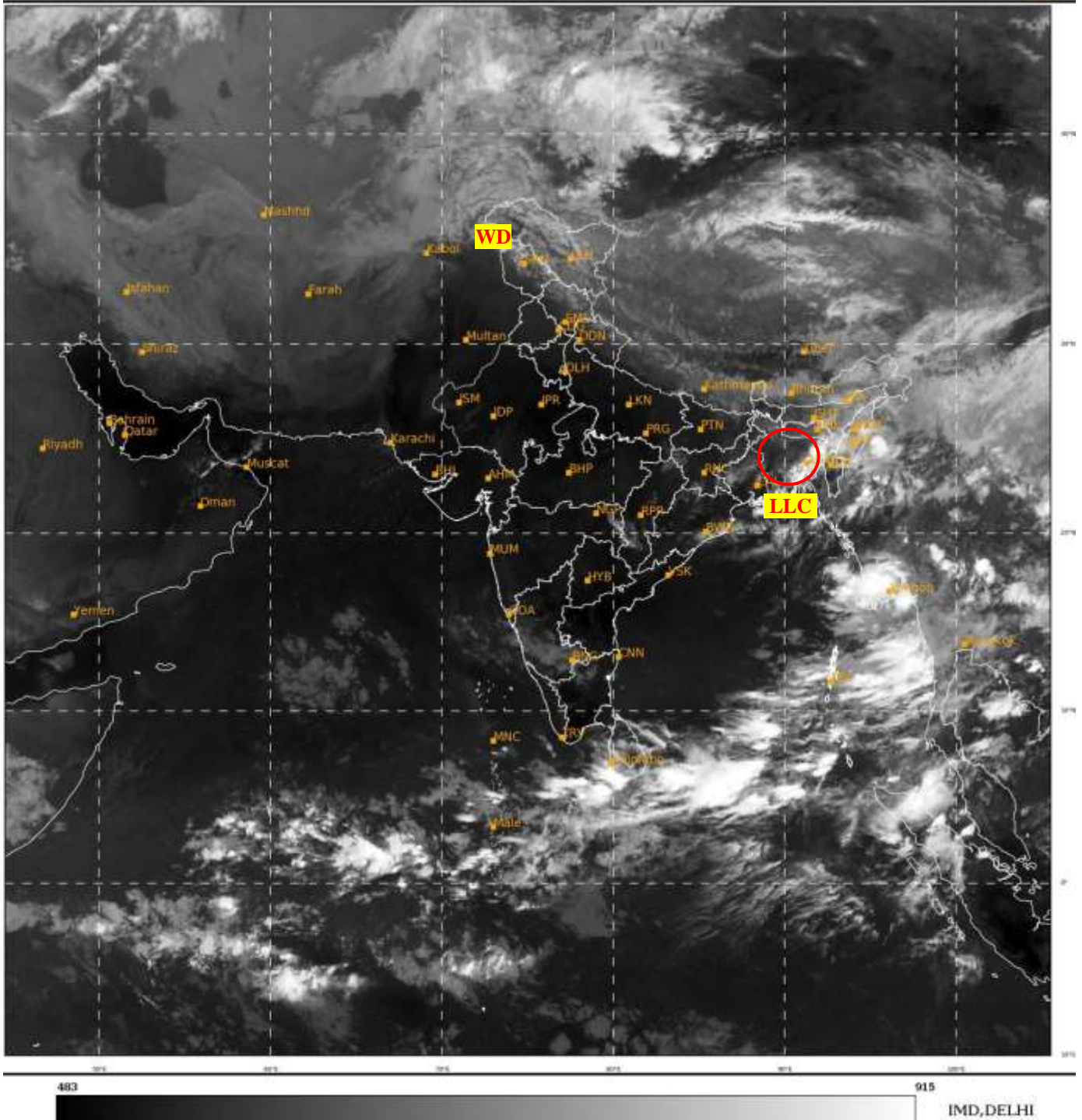
भारत मौसम विज्ञान विभाग  
पृथ्वी विज्ञान मंत्रालय  
India Meteorological Department  
Ministry of Earth Sciences



**SATELLITE BULLETIN BASED ON SATELLITE  
IMAGERIES AND PRODUCTS**  
**07.10.2023 TIME 0300 UTC**

SAT : INSAT-3D IMG  
IMG\_TIR1 10.8 um  
LIC Mercator

07-10-2023/(0300 to 0326) GMT  
07-10-2023/(0830 to 0856) IST



TCIN50 DEMS 070300

SATELLITE BULLETIN BASED ON INSAT-3D PIC OF 070300 UTC (.)

REGION COVERED BETWEEN LAT 50.0°N TO 35.0°S AND LONG 40.0°E TO 125.0°E (.)

**SALIENT FEATURES:-**

**LLC OVER CENTRAL PARTS OF BANGLADESH & N/HOOD:-**

LOW LEVEL CIRCULATION (**LLC**) OVER CENTRAL PARTS OF BD & N/HOOD (.) ASSTD SCT TO BKN LOW/MED CLOUDS WITH EMBDD MOD TO INT CONVTN OVER BD S ASSAM TRP (MINIMUM **CTT MINUS 65 DEG CEL**) AND WK TO MOD CONVTN OVER REST NE STATES (.)

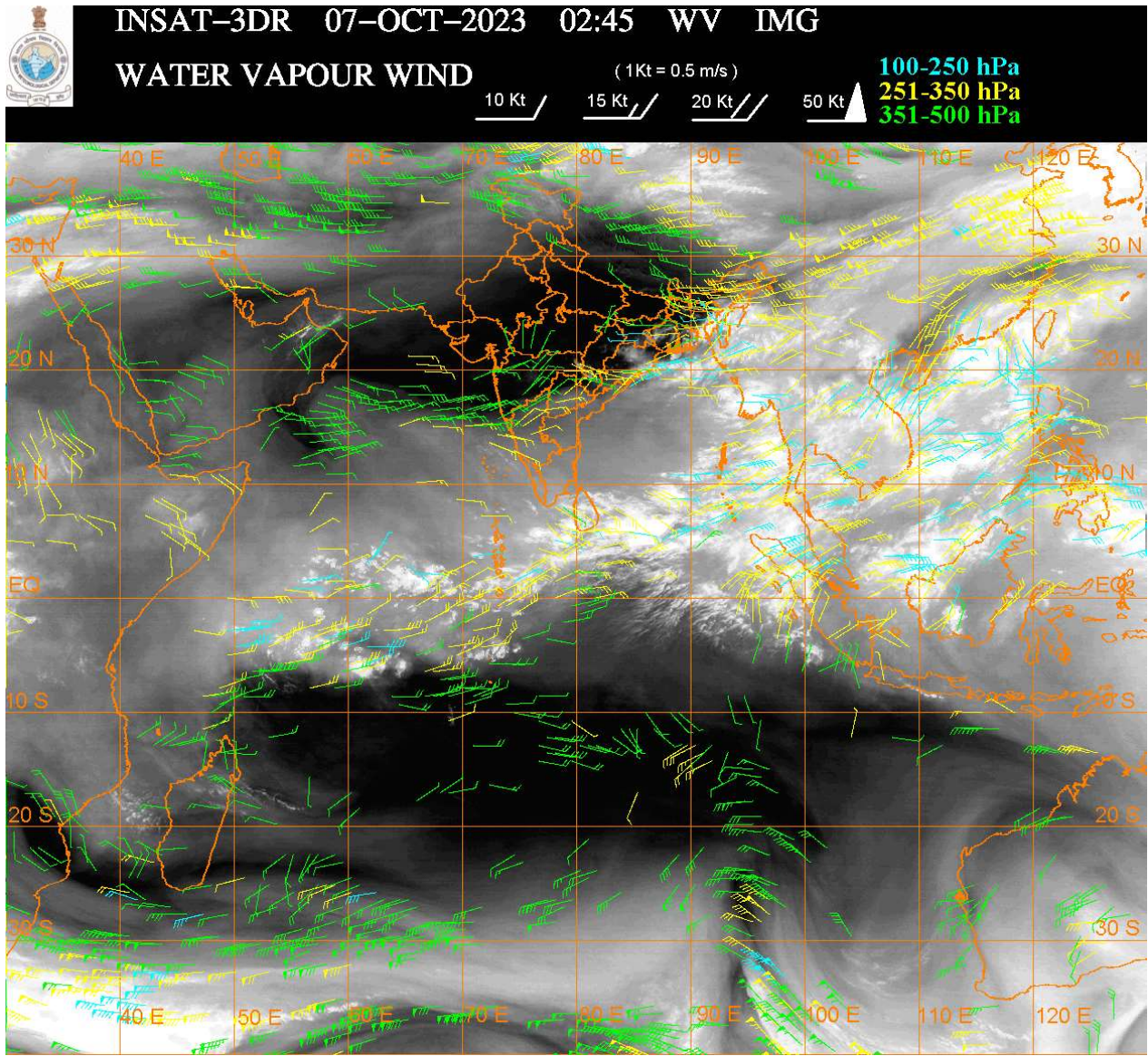
**WESTERN DISTURBANCE (WD):-**

SCT MULTILAYERED CLOUDS OVER EXT N PAK J&K LADAKH AND N/HOOD IN ASSW **WD** OVER THE AREA (.)



**THUNDERSTORM / CONVECTIVE ACTIVITY:-**

**MODERATE THUNDERSTORM / CONVECTIVE ACTIVITY OBSERVED OVER BANGLADESH NORTH-EAST STATES ANDAMAN & NICOBAR ILS (.)**



**CLOUDS DESCRIPTION WITHIN INDIA:-**

**NORTH:-**

**SCT LOW/MED CLOUDS WITH EMBDD ISOL WK TO MOD CONVTN OVER LADAKH J&K N HP N UTRKND (.) SCT LOW/MED CLOUDS OVER S UTRKND E UP (.)**

**EAST:-**

**SCT TO BKN LOW/MED CLOUDS WITH EMBDD MOD TO INT CONVTN OVER S ASSAM TRP SW & E BD (.) SCT TO BKN LOW/MED CLOUDS WITH EMBDD WK TO MOD CONVTN OVER SE JHRKND S CHTGH ORS GWB SKM REST NE STATES & NW BD (.) SCT LOW/MED CLOUDS OVER BHR REST JHRKND N CHTGH SHWB (.)**

**WEST:-**

**SCT LOW/MED CLOUDS WITH EMBDD WK CONVTN OVER E VID (.) ISOL TO SCT LOW/MED CLOUDS OVER S RAJ N & SE GUJ MADHYA MAHA KKN GOA (.)**

**SOUTH:-**

**SCT LOW/MED CLOUDS WITH EMBDD MOD TO INT CONVTN OVER ANDAMAN & NICOBAR ILS (.) SCT LOW/MED CLOUDS OVER KRNTK RYLSM N KER TN (.)**

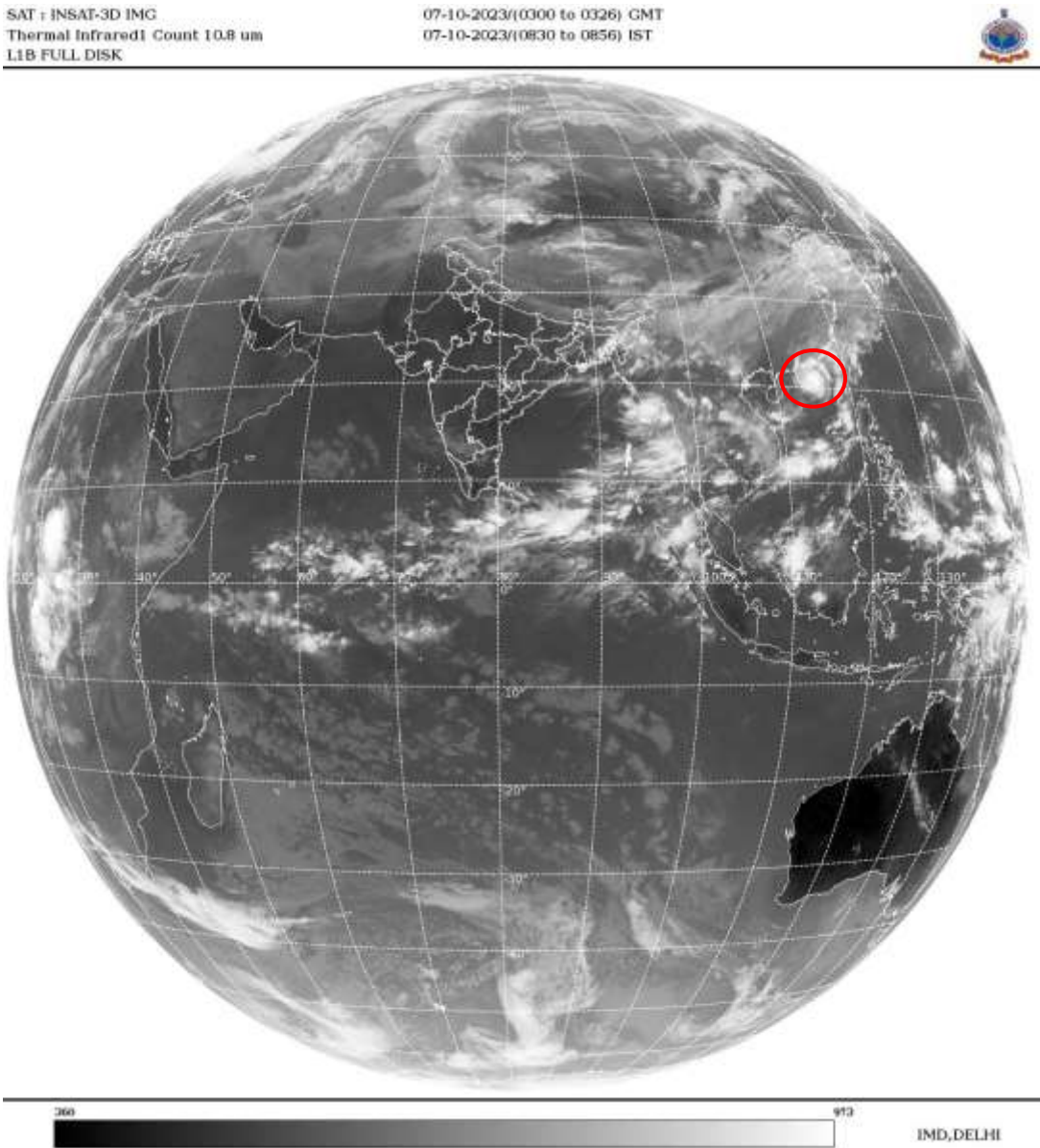
**ARABIAN SEA:-**

**SCT LOW/MED CLOUDS WITH EMBDD MOD TO INT CONVTN OVER SE ARSEA AND COMORIN AREA (.) SCT LOW/MED CLOUDS OVER CENTRAL & SW ARSEA (.)**

**BAY OF BENGAL & ANDAMAN SEA:-**

**SCT LOW/MED CLOUDS WITH EMBDD MOD TO INT CONVTN OVER NORTH BAY EC & SOUTH BAY ANDAMAN SEA ARAKAN COAST GULF OF MARTABAN AND TENASSERIM COAST (.)**

CLOUDS DESCRIPTION OUTSIDE INDIA:-



VORTEX (KUINI) OVER SOUTH CHINA SEA AND N/HOOD:-

VORTEX (**KUINI**) OVER SOUTH CHINA SEA AND N/HOOD (**AREA F05**) CENTERED NEAR **21.1N / 115.5E** (.) INTENSITY **T5.5/6.0** (.) MAXIMUM SUSTAINED WINDS (MSW) **90-119 KTS** (.) ASSTD BKN LOW/MED CLOUDS WITH EMBDD INT TO V INT CONVTN OVER AREA BET LAT 19.0N TO 23.5N LONG 113.0E TO 118.0E (.)

SCT LOW/MED CLOUDS WITH EMBDD MOD TO INT CONVTN OVER SRI LANKA GULF OF MANNAR MALDIVES TIBET CHINA YELLOW SEA EAST CHINA SEA TAIWAN MYANMAR THAILAND GULF OF THAILAND CAMBODIA LAOS VIETNAM GULF OF TONKIN SUMATRA STR OF MALACCA MALAYSIA BORNEO SOUTH CHINA SEA PHILIPPINES AND OVER INDIAN OCEAN BET LAT 5.0N TO 7.0S LONG 45.0E TO 101.0E (.)

TOO 07/0940 HRS IST=

NNNN

LEGEND:-

|        |       |  |
|--------|-------|--|
| REGION | NORTH | J&K HP PJB HARY DLH UP UTRKND                        |
|        | EAST  | BHR JHRKND CHTGH OR WB SKM<br>NORTH- EAST STATES     |
|        | WEST  | RAJ MP GUJ MAHA GOA                                  |
|        | SOUTH | TLNGN AP KRNTK KER TN LKSDP<br>ANDAMAN & NICOBAR ILS |

|   |                        |   |
|---|------------------------|---|
| <b>CLOUD DISTRIBUTION</b>   | <b>ISOL</b>            | <b>ISOLATED (LESS THAN 25%)</b>                             |
|   | <b>SCT</b>             | <b>SCATTERED (25 TO 50%)</b>                                |
|   | <b>BKN</b>             | <b>BROKEN (51 TO 75%)</b>                                   |
|   | <b>SLD</b>             | <b>SOLID (GREATER THAN 75%)</b>                             |
| <b>CLOUDS TOP TEMPERATURE</b>   | <b>CTT</b>             | <b>CLOUD TOP TEMPERATURE</b>                                |
| <b>CONVECTION</b>   | <b>WK CONVTN</b>       | <b>WEAK CONVECTION<br/>(CTT GREATER THAN -25°C)</b>         |
|   | <b>MOD CONVTN</b>      | <b>MODERATE CONVECTION<br/>(CTT BETWEEN -25°C TO -40°C)</b> |
|   | <b>INT CONVTN</b>      | <b>INTENSE CONVECTION<br/>(CTT BETWEEN -41°C TO -70°C)</b>  |
|   | <b>V INT CONVTN</b>    | <b>VERY INTENSE CONVECTION<br/>(CTT LESS THAN -70°C)</b>    |
| <b>METEOROLOGICAL<br/>SUB- DIVISIONS,<br/>STATES &amp; UNION<br/>TERITORIES</b> | <b>ARUPR</b>           | <b>ARUNACHAL PRADESH</b>                                    |
|   | <b>BHR</b>             | <b>BIHAR</b>  |
|   | <b>CHTGH</b>           | <b>CHHATTISGARH</b>   |
|   | <b>COTL AP</b>         | <b>COASTAL ANDHRA PRADESH</b>                               |
|   | <b>COTL KRNTK</b>      | <b>COASTAL KARNATAKA</b>                                    |
|   | <b>COTL ORS</b>        | <b>COASTAL ORISSA</b>                                       |
|   | <b>GUJ</b>             | <b>GUJARAT</b>  |
|   | <b>GWB</b>             | <b>GANGETIC WEST BENGAL</b>                                 |
|   | <b>HARY</b>            | <b>HARYANA</b>  |
|   | <b>DLH</b>             | <b>DELHI</b>  |
|   | <b>HP</b>              | <b>HIMACHAL PRADESH</b>                                     |
|   | <b>J&amp;K</b>         | <b>JAMMU AND KASHMIR</b>                                    |
|   | <b>JHRKND</b>          | <b>JHARKHAND</b>  |
|   | <b>KER</b>             | <b>KERALA</b>   |
|   | <b>KKN</b>             | <b>KONKAN</b>   |
|   | <b>LKSDP</b>           | <b>LAKSHADWEEP</b>  |
|   | <b>M MAHA</b>          | <b>MADHYA MAHARASHTRA</b>                                   |
|   | <b>MAHA</b>            | <b>MAHARASHTRA</b>  |
|   | <b>MANI</b>            | <b>MANIPUR</b>  |
|   | <b>MEGHA</b>           | <b>MEGHALAYA</b>  |
|   | <b>MIZO</b>            | <b>MIZORAM</b>  |
|   | <b>MP</b>              | <b>MADHYA PRADESH</b>                                       |
|   | <b>MRTHWD</b>          | <b>MARATHWADA</b>   |
|   | <b>NAGA</b>            | <b>NAGALAND</b>   |
|   | <b>N COTL AP</b>       | <b>NORTH COASTAL ANDHRA<br/>PRADESH</b>                     |
|   | <b>NIK</b>             | <b>NORTH INTERIOR KARNATAKA</b>                             |
|   | <b>ORS</b>             | <b>ORISSA</b>   |
|   | <b>PJB</b>             | <b>PUNJAB</b>   |
|   | <b>RAJ</b>             | <b>RAJASTHAN</b>  |
|   | <b>RYLSM</b>           | <b>RAYALASEEMA</b>  |
|   | <b>SAU &amp; KUTCH</b> | <b>SAURASHTRA &amp; KUTCH</b>                               |
|   | <b>SHWB</b>            | <b>SUB-HIMALAYAN WEST BENGAL</b>                            |
|   | <b>SIK</b>             | <b>SOUTH INTERIOR KARNATAKA</b>                             |
|   | <b>SKM</b>             | <b>SIKKIM</b>   |

|                      |               |                                  |
|----------------------|---------------|----------------------------------|
|                      | <b>TLNGN</b>  | <b>TELANGANA</b>                 |
|                      | <b>TN</b>     | <b>TAMIL NADU</b>                |
|                      | <b>TRP</b>    | <b>TRIPURA</b>                   |
|                      | <b>UP</b>     | <b>UTTAR PRADESH</b>             |
|                      | <b>UTRKND</b> | <b>UTTARAKHAND</b>               |
|                      | <b>VID</b>    | <b>VIDHARBHA</b>                 |
|                      | <b>SHWB</b>   | <b>SUB HIMALAYAN WEST BENGAL</b> |
|                      | <b>GWB</b>    | <b>GANGETIC WEST BENGAL</b>      |
|                      | <b>ARSEA</b>  | <b>ARABIAN SEA</b>               |
|                      | <b>ILS</b>    | <b>ISLANDS</b>                   |
| <b>MISCELLANEOUS</b> | <b>ASSW</b>   | <b>IN ASSOCIATION WITH</b>       |
|                      | <b>ASSTD</b>  | <b>ASSOCIATED</b>                |
|                      | <b>LLC</b>    | <b>LOW LEVEL CIRCULATION</b>     |
|                      | <b>EMBDD</b>  | <b>EMBEDDED</b>                  |
|                      | <b>N/HOOD</b> | <b>NEIGHBOURHOOD</b>             |
|                      | <b>EXT</b>    | <b>EXTREME</b>                   |