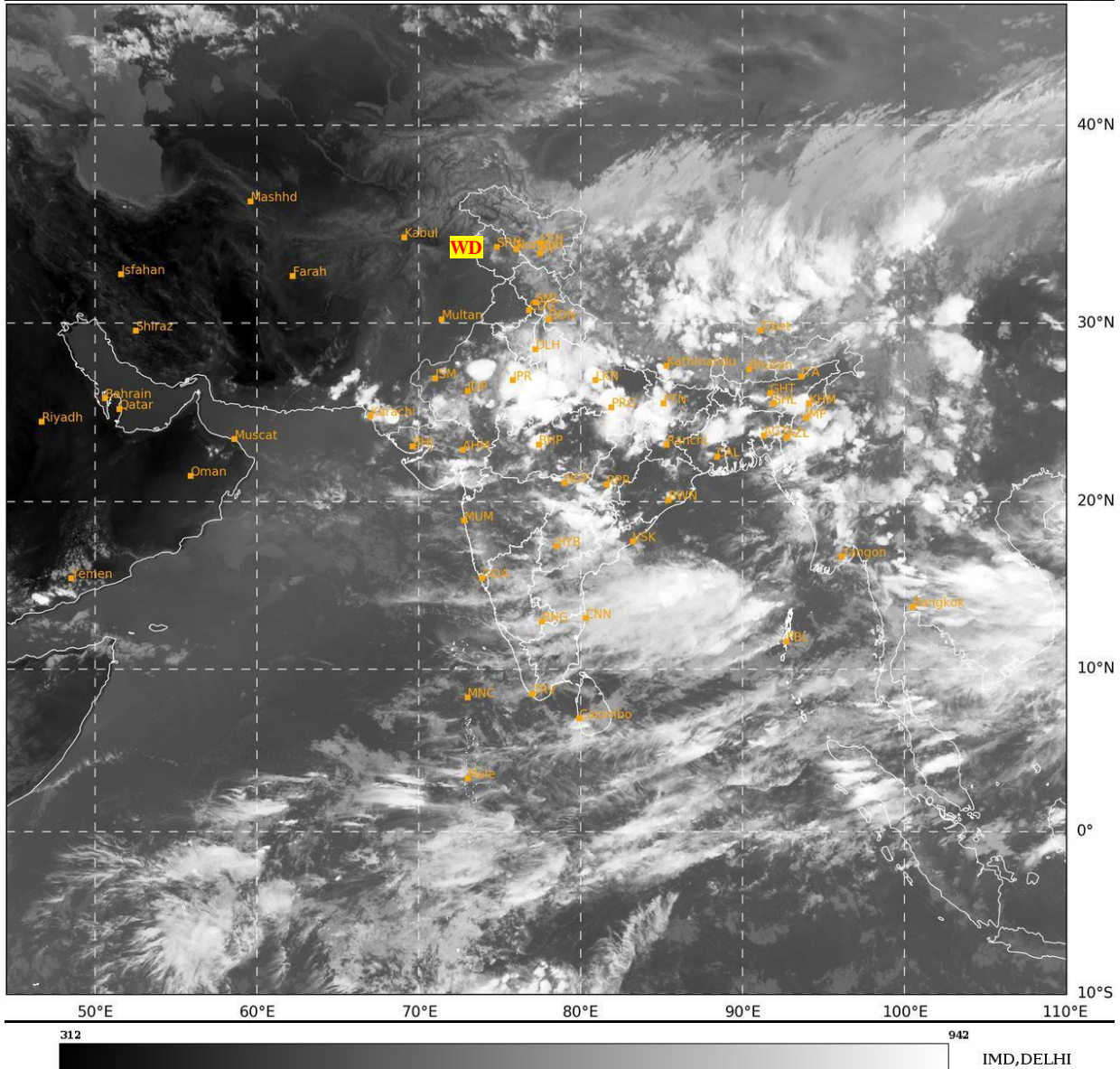




**SATELLITE BULLETIN BASED ON SATELLITE  
IMAGERIES AND PRODUCTS**  
**04.09.2024 TIME 1200 UTC**

SAT : INSAT-3DR IMG  
IMG\_TIR1 10.8 um  
LIC Mercator

04-09-2024/(1145 to 1212) GMT  
04-09-2024/(1715 to 1742) IST



TCIN50 DEMS 041200

SATELLITE BULLETIN BASED ON INSAT-3DR PIC OF 041145 UTC (.)

REGION COVERED BETWEEN LAT 50.0°N TO 35.0°S AND LONG 40.0°E TO 125.0°E (.)

**SALIENT FEATURES:-**

**CONVECTION OVER WEST CENTRAL BAY & N/HOOD:-**

INTENSE CONVECTION PERSISTS OVER CENTRAL ADJ SW BAY DURING LAST 12 HOURS  
(MINIMUM **CTT MINUS 90 DEG CEL**) (.)

**WESTERN DISTURBANCE (WD):-**

SCT MULTILAYERED CLOUDS OVER J&K LADAKH HP UTRKND TIBET ADJ CHINA IN ASSW  
**WD** OVER THE AREA (.)

**CONVECTIVE / THUNDERSTORM ACTIVITY:-**

INTENSE TO VERY INTENSE CONVECTIVE / THUNDERSTORM ACTIVITY OBSERVED OVER N  
RAJ S GUJ UP MP VID E TLNGN N COTL AP W BHR NW JHRKND CHTGH N GWB SW ORS S  
ASSAM NAGA MANI MIZO TRP (MINIMUM **CTT MINUS 70-93 DEG CEL**) (.)

**MODERATE TO INTENSE CONVECTIVE / THUNDERSTORM ACTIVITY OBSERVED OVER HP UTRKND S PJB HARY DLH E ORS S GWB N SHWB REST NE STATES S RAJ N GUJ REST MAHA KRNTK TLNGN RYLSM S COTL AP KER TN (MINIMUM CTT MINUS 50-70 DEG CEL) (.)**



**INSAT-3DR 04-SEP-2024 12:15 WV IMG**

**WATER VAPOUR WIND**

(1Kt = 0.5 m/s)

10 Kt

15 Kt

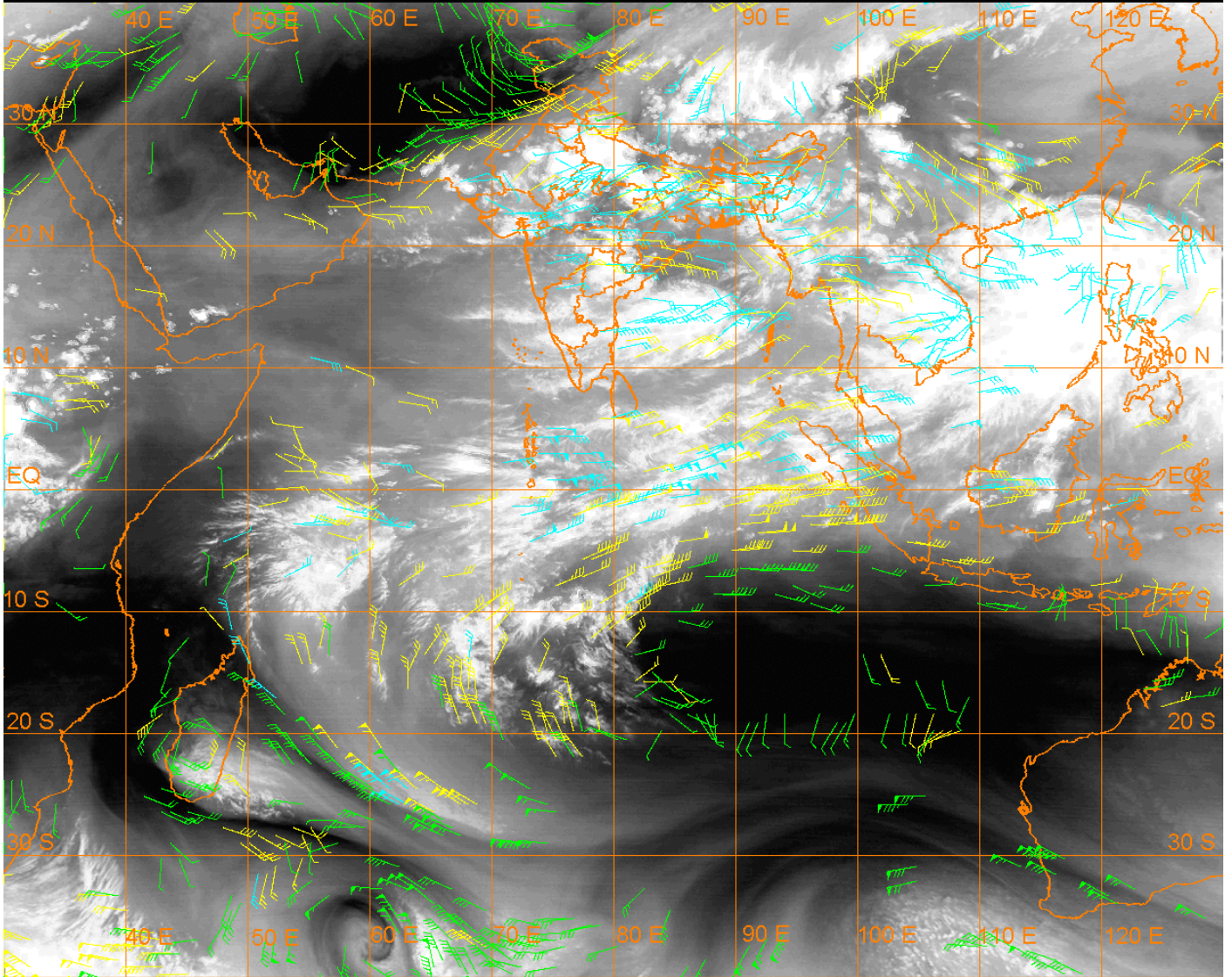
20 Kt

50 Kt

100-250 hPa

251-350 hPa

351-500 hPa



**CLOUDS DESCRIPTION WITHIN INDIA:-**

**NORTH:-**

**BKN LOW/MED CLOUDS WITH EMBDD INT TO V INT CONVTN OVER UP (.) SCT LOW/MED CLOUDS WITH EMBDD MOD TO INT CONVTN OVER UTRKND HARY S PJB AND WK TO MOD CONVTN OVER LADAKH J&K (.) SCT LOW/MED CLOUDS OVER N PJB (.)**

**EAST:-**

**SCT LOW/MED CLOUDS WITH EMBDD INT TO V INT CONVTN OVER W BHR NW JHRKND CHTGH N GWB SW ORS S ASSAM NAGA MANI MIZO TRP BD (.) SCT LOW/MED CLOUDS WITH EMBDD MOD TO INT CONVTN OVER E BHR REST ORS S GWB REST JHRKND N SHWB REST NE STATES AND WK TO MOD CONVTN OVER S SHWB SKM (.)**

**WEST:-**

**SCT LOW/MED CLOUDS WITH EMBDD INT TO V INT CONVTN OVER N RAJ MP VID (.) SCT LOW/MED CLOUDS WITH EMBDD MOD TO INT CONVTN OVER S RAJ GUJ REST MAHA AND WK TO MOD CONVTN OVER GOA (.)**

**SOUTH:-**

**SCT LOW/MED CLOUDS WITH EMBDD INT TO V INT CONVTN OVER N COTL AP (.) SCT LOW/MED CLOUDS WITH EMBDD MOD TO INT CONVTN OVER KRNTK TLNGN RYLSM S COTL AP KER TN ANDAMAN & NICOBAR ILS AND WK TO MOD CONVTN OVER LKSDP ILS (.)**

**ARABIAN SEA:-**

SCT LOW/MED CLOUDS WITH EMBDD MOD TO INT CONVTN OVER SE ARSEA MALDIVES & COMORIN AREA (.) SCT LOW/MED CLOUDS WITH EMBDD WK TO MOD CONVTN OVER N ARSEA GULF OF CAMBAY LKSDP ILS AREA (.)

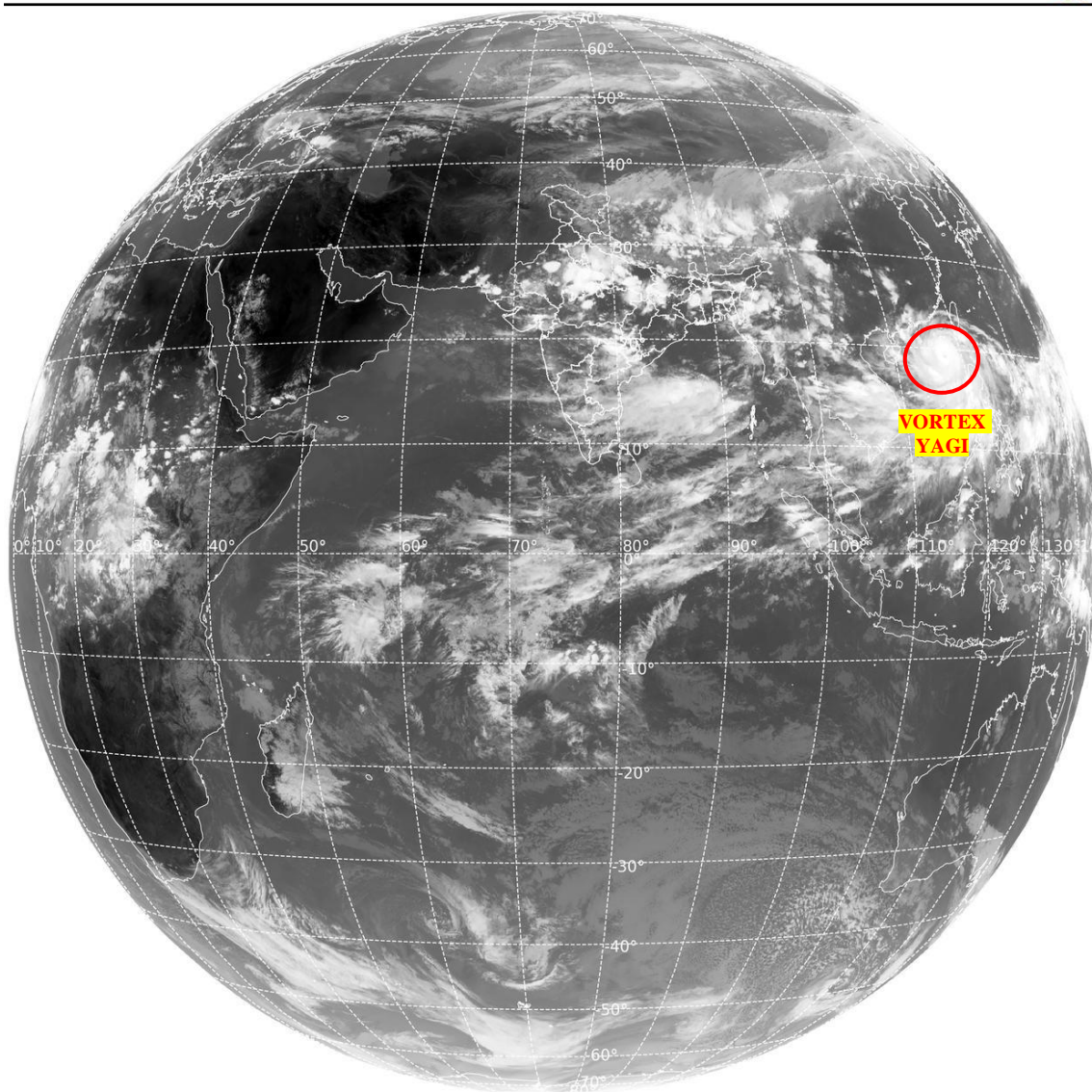
**BAY OF BENGAL & ANDAMAN SEA:-**

SCT LOW/MED CLOUDS WITH EMBDD INT TO V INT CONVTN OVER CENTRAL & SOUTH BAY S ANDAMAN SEA (.) SCT LOW/MED CLOUDS WITH EMBDD MOD TO INT CONVTN OVER REST BAY N ANDAMAN SEA ARAKAN COAST GULF OF MARTABAN & TENASSERIM COAST (.)

**CLOUDS DESCRIPTION OUTSIDE INDIA:-**

SAT : INSAT-3DR IMG  
Thermal Infrared1 Count 10.8 um  
L1B FULL DISK

04-09-2024/(1145 to 1212) GMT  
04-09-2024/(1715 to 1742) IST



313

973

IMD,DELHI

**VORTEX (YAGI) OVER SOUTH CHINA SEA:-**

VORTEX (YAGI) OVER SOUTH CHINA SEA (AREA F05) CENTERED NEAR 19.2N / 117.1E (.) INTENSITY T6.0/6.0 (.) CORRESPONDING MAXIMUM SUSTAINED WINDS 90-119 KTS (.) ASSTD BKN LOW/MED CLOUDS WITH EMBDD INT TO V INT CONVTN OVER AREA BET LAT 8.0N TO 23.0N AND LONG 110.0E TO 125.0E (.)

SCT LOW/MED CLOUDS WITH EMBDD MOD TO INT CONVTN OVER SRI LANKA MALDIVES S PAK NEPAL BHUTAN TIBET CHINA EAST CHINA SEA TAIWAN MYANMAR THAILAND GULF OF THAILAND CAMBODIA LAOS VIETNAM GULF OF TONKIN HAINAN SUMATRA STR OF MALACCA MALAYSIA BORNEO SOUTH CHINA SEA CELEBES ILS & SEA PHILIPPINES SULU SEA MADAGASCAR AND OVER INDIAN OCEAN BET LAT 5.0N TO 25.0S LONG 50.0E TO 100.0E (.)

TOO 04/1830 HRS IST=

NNNN

**LEGEND:-**

|   |                      |  |                   |
|---|----------------------|--|-------------------|
| <b>REGION</b>   | <b>NORTH</b>         | <b>J&amp;K HP PJB HARY DLH UP UTRKND</b>                         |                   |
|   | <b>EAST</b>          | <b>BHR JHRKND CHTGH OR WB SKM<br/>NORTH- EAST STATES</b>         |                   |
|   | <b>WEST</b>          | <b>RAJ MP GUJ MAHA GOA</b>                                       |                   |
|   | <b>SOUTH</b>         | <b>TLNGN AP KRNTK KER TN LKSDP<br/>ANDAMAN &amp; NICOBAR ILS</b> |                   |
| <b>CLOUD DISTRIBUTION</b>   | <b>ISOL</b>          | <b>ISOLATED (LESS THAN 25%)</b>                                  |                   |
|   | <b>SCT</b>           | <b>SCATTERED (25 TO 50%)</b>                                     |                   |
|   | <b>BKN</b>           | <b>BROKEN (51 TO 75%)</b>  |                   |
|   | <b>SLD</b>           | <b>SOLID (GREATER THAN 75%)</b>                                  |                   |
| <b>CLOUDS TOP TEMPERATURE</b>   | <b>CTT</b>           | <b>CLOUD TOP TEMPERATURE</b>                                     |                   |
| <b>CONVECTION</b>   | <b>WK CONV TN</b>    | <b>WEAK CONVECTION<br/>(CTT GREATER THAN -25°C)</b>              |                   |
|   | <b>MOD CONV TN</b>   | <b>MODERATE CONVECTION<br/>(CTT BETWEEN -25°C TO -40°C)</b>      |                   |
|   | <b>INT CONV TN</b>   | <b>INTENSE CONVECTION<br/>(CTT BETWEEN -41°C TO -70°C)</b>       |                   |
|   | <b>V INT CONV TN</b> | <b>VERY INTENSE CONVECTION<br/>(CTT LESS THAN -70°C)</b>         |                   |
| <b>METEOROLOGICAL<br/>SUB- DIVISIONS,<br/>STATES &amp; UNION<br/>TERITORIES</b> | <b>ARUPR</b>         | <b>ARUNACHAL PRADESH</b>   |                   |
|   | <b>BHR</b>           | <b>BIHAR</b>   |                   |
|   | <b>CHTGH</b>         | <b>CHHATTISGARH</b>  |                   |
|   | <b>COTL AP</b>       | <b>COASTAL ANDHRA PRADESH</b>                                    |                   |
|   | <b>COTL KRNTK</b>    | <b>COASTAL KARNATAKA</b>   |                   |
|   | <b>COTL ORS</b>      | <b>COASTAL ORISSA</b>  |                   |
|   | <b>GUJ</b>           | <b>GUJARAT</b>   |                   |
|   | <b>GWB</b>           | <b>GANGETIC WEST BENGAL</b>                                      |                   |
|   | <b>HARY</b>          | <b>HARYANA</b>   |                   |
|   | <b>DLH</b>           | <b>DELHI</b>   |                   |
|   | <b>HP</b>            | <b>HIMACHAL PRADESH</b>  |                   |
|   | <b>J&amp;K</b>       | <b>JAMMU AND KASHMIR</b>   |                   |
|   | <b>JHRKND</b>        | <b>JHARKHAND</b>   |                   |
|   | <b>KER</b>           | <b>KERALA</b>  |                   |
|   | <b>KKN</b>           | <b>KONKAN</b>  |                   |
|   | <b>LKSDP</b>         | <b>LAKSHADWEEP</b>   |                   |
|   | <b>M MAHA</b>        | <b>MADHYA MAHARASHTRA</b>  |                   |
|   | <b>MAHA</b>          | <b>MAHARASHTRA</b>   |                   |
|   | <b>MANI</b>          | <b>MANIPUR</b>   |                   |
|   | <b>MEGHA</b>         | <b>MEGHALAYA</b>   |                   |
|   | <b>MIZO</b>          | <b>MIZORAM</b>   |                   |
|   | <b>MP</b>            | <b>MADHYA PRADESH</b>  |                   |
|   |                      | <b>MRTHWD</b>  | <b>MARATHWADA</b> |
|   |                      | <b>NAGA</b>  | <b>NAGALAND</b>   |
| <b>N COTL AP</b>  |                      | <b>NORTH COASTAL ANDHRA<br/>PRADESH</b>                          |                   |
| <b>NIK</b>  |                      | <b>NORTH INTERIOR KARNATAKA</b>                                  |                   |

|                      |                        |                                  |
|----------------------|------------------------|----------------------------------|
|                      | <b>ORS</b>             | <b>ORISSA</b>                    |
|                      | <b>PJB</b>             | <b>PUNJAB</b>                    |
|                      | <b>RAJ</b>             | <b>RAJASTHAN</b>                 |
|                      | <b>RYLSM</b>           | <b>RAYALASEEMA</b>               |
|                      | <b>SAU &amp; KUTCH</b> | <b>SAURASHTRA &amp; KUTCH</b>    |
|                      | <b>SHWB</b>            | <b>SUB-HIMALAYAN WEST BENGAL</b> |
|                      | <b>SIK</b>             | <b>SOUTH INTERIOR KARNATAKA</b>  |
|                      | <b>SKM</b>             | <b>SIKKIM</b>                    |
|                      | <b>TLNGN</b>           | <b>TELANGANA</b>                 |
|                      | <b>TN</b>              | <b>TAMIL NADU</b>                |
|                      | <b>TRP</b>             | <b>TRIPURA</b>                   |
|                      | <b>UP</b>              | <b>UTTAR PRADESH</b>             |
|                      | <b>UTRKND</b>          | <b>UTTARAKHAND</b>               |
|                      | <b>VID</b>             | <b>VIDHARBHA</b>                 |
|                      | <b>SHWB</b>            | <b>SUB HIMALAYAN WEST BENGAL</b> |
|                      | <b>GWB</b>             | <b>GANGETIC WEST BENGAL</b>      |
|                      | <b>ARSEA</b>           | <b>ARABIAN SEA</b>               |
|                      | <b>ILS</b>             | <b>ISLANDS</b>                   |
| <b>MISCELLANEOUS</b> | <b>ASSW</b>            | <b>IN ASSOCIATION WITH</b>       |
|                      | <b>ASSTD</b>           | <b>ASSOCIATED</b>                |
|                      | <b>LLC</b>             | <b>LOW LEVEL CIRCULATION</b>     |
|                      | <b>EMBDD</b>           | <b>EMBEDDED</b>                  |
|                      | <b>N/HOOD</b>          | <b>NEIGHBOURHOOD</b>             |
|                      | <b>EXT</b>             | <b>EXTREME</b>                   |