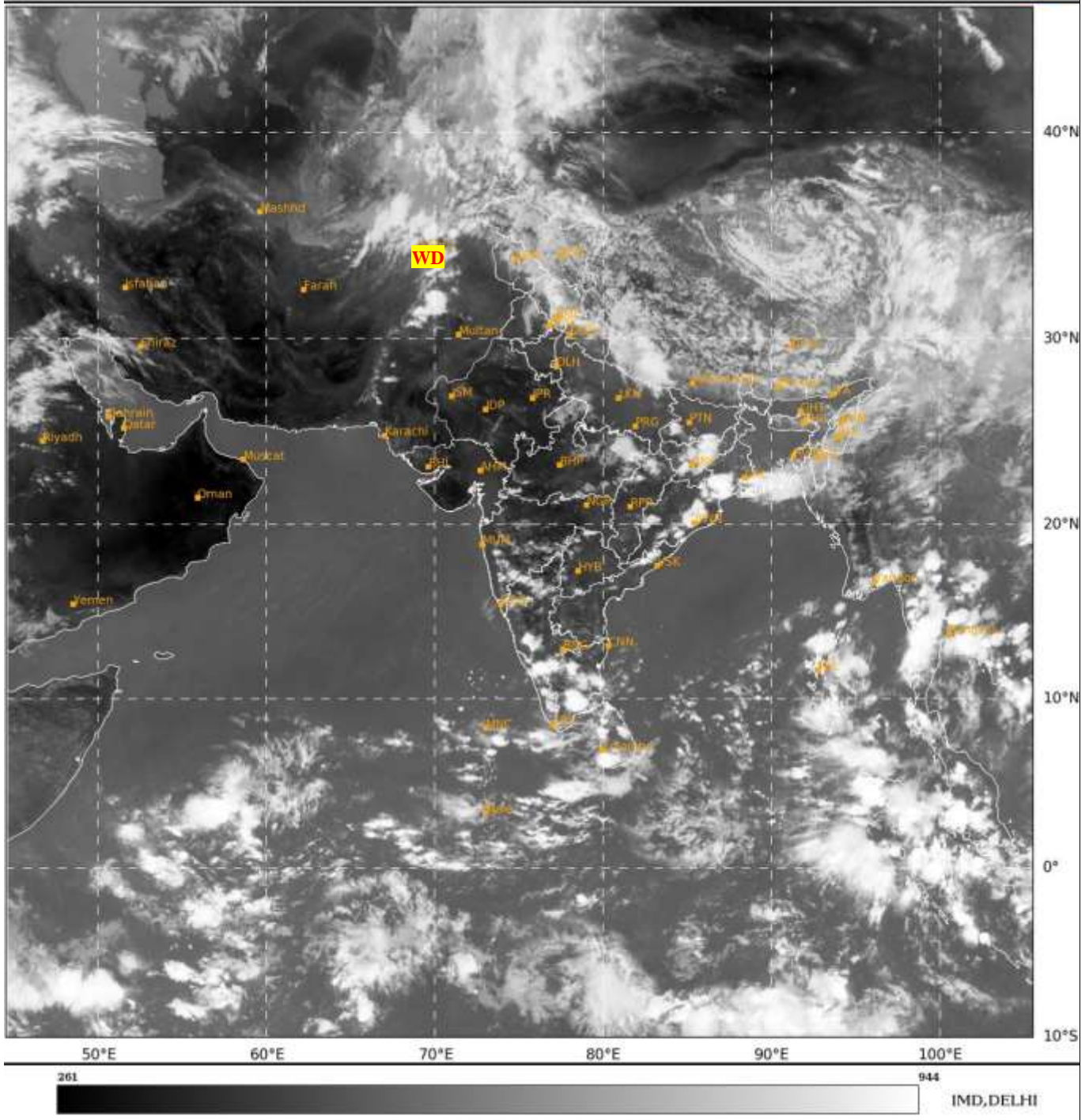




**SATELLITE BULLETIN BASED ON SATELLITE  
IMAGERIES AND PRODUCTS**  
**11.05.2024 TIME 0900 UTC**

SAT : INSAT-3D IMG  
IMG\_TIR1 10.8 um  
LIC Mercator

11-05-2024/(0900 to 0926) GMT  
11-05-2024/(1430 to 1456) IST



TCIN50 DEMS 110900

SATELLITE BULLETIN BASED ON INSAT-3D PIC OF 110900 UTC (.)

REGION COVERED BETWEEN LAT 50.0°N TO 35.0°S AND LONG 30.0°E TO 125.0°E (.)

**SALIENT FEATURES:-**

**WESTERN DISTURBANCE:-**

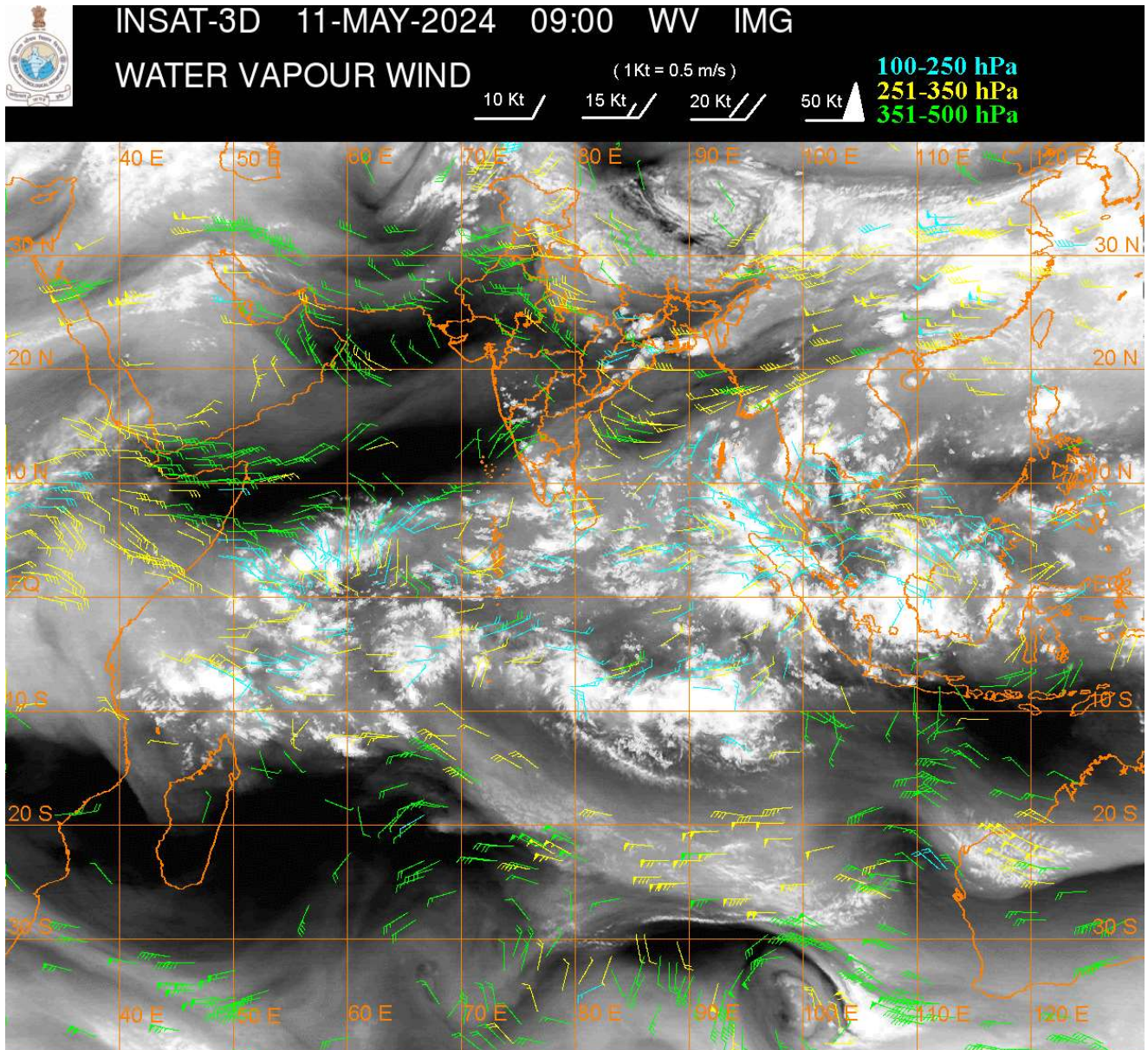
SCT MULTILAYERED CLOUDS OVER E AFGAN N PAK LADAKH J&K HP UTRKND PJB AND N/HOOD IN ASSW **WD** OVER THE AREA (.)

**CONVECTIVE / THUNDERSTORM ACTIVITY:-**

INTENSE TO VERY INTENSE CONVECTIVE / THUNDERSTORM ACTIVITY OBSERVED OVER E ORS S GWB TN (MINIMUM **CTT MINUS 88-93 DEG CEL**) E JHRKND SIK KER (MINIMUM **CTT MINUS 80-85 DEG CEL**) S BHR N COTL AP (MINIMUM **CTT MINUS 70-75 DEG CEL**) (.)



**MODERATE TO INTENSE CONVECTIVE / THUNDERSTORM ACTIVITY OBSERVED OVER EXT W GWB NIK ANDAMAN & NICOBAR ILS (MINIMUM CTT MINUS 65-70 DEG CEL) LADAKH J&K HP N UTRKND W JHRKND N CHTGH WC ORS EXT SW & NE MP MADHYA MAHA MRTHWD EXT S VID N & SW TLNGN (MINIMUM CTT MINUS 50-60 DEG CEL) (.)**



**CLOUDS DESCRIPTION WITHIN INDIA:-**

**NORTH:-**

**SCT LOW/MED CLOUDS WITH EMBDD MOD TO INT CONVTN OVER LADAKH J&K HP N UTRKND AND WK TO MOD CONVTN OVER E PJB EXT N HARY W & NE UP (.) SCT LOW/MED CLOUDS OVER S UTRKND REST HARY SE UP (.)**

**EAST:-**

**SCT TO BKN LOW/MED CLOUDS WITH EMBDD INT TO V INT CONVTN OVER S BHR E JHRKND E ORS S GWB (.) SCT LOW/MED CLOUDS WITH EMBDD MOD TO INT CONVTN OVER W JHRKND N CHTGH WC ORS EXT W GWB ARUPR NAGA S BD AND WK TO MOD CONTN OVER S CHTGH REST GWB SKM REST NE STATES (.) SCT LOW/MED CLOUDS OVER N BHR REST W ORS SHWB (.)**

**WEST:-**

**SCT LOW/MED CLOUDS WITH EMBDD MOD TO INT CONVTN OVER EXT SW & NE MP MADHYA MAHA MRTHWD EXT S VID (.) SCT LOW/MED CLOUDS WITH EMBDD ISOL WK TO MOD CONVTN OVER RAJ REST MP REST VID (.) SCT LOW/MED CLOUDS OVER GUJ GOA (.)**

**SOUTH:-**

**SCT TO BKN LOW/MED CLOUDS WITH EMBDD INT TO V INT CONVTN OVER SIK N COTL AP KER TN (.) SCT LOW/MED CLOUDS WITH EMBDD MOD TO INT CONVTN OVER NIK N & SW TLNGN ANDAMAN & NICOBAR ILS AND ISOL WK TO MOD CONVTN OVER RYLSM S COTL AP (.) SCT LOW/MED CLOUDS OVER COTL KRNTK SE TLNGN LKSDP ILS (.)**

**ARABIAN SEA:-**

**SCT LOW/MED CLOUDS WITH EMBDD INT TO V INT CONVTN OVER SOUTH ARSEA SOUTH OF LAT 10.0N COMORIN AREA & MALDIVES AREA (.)**

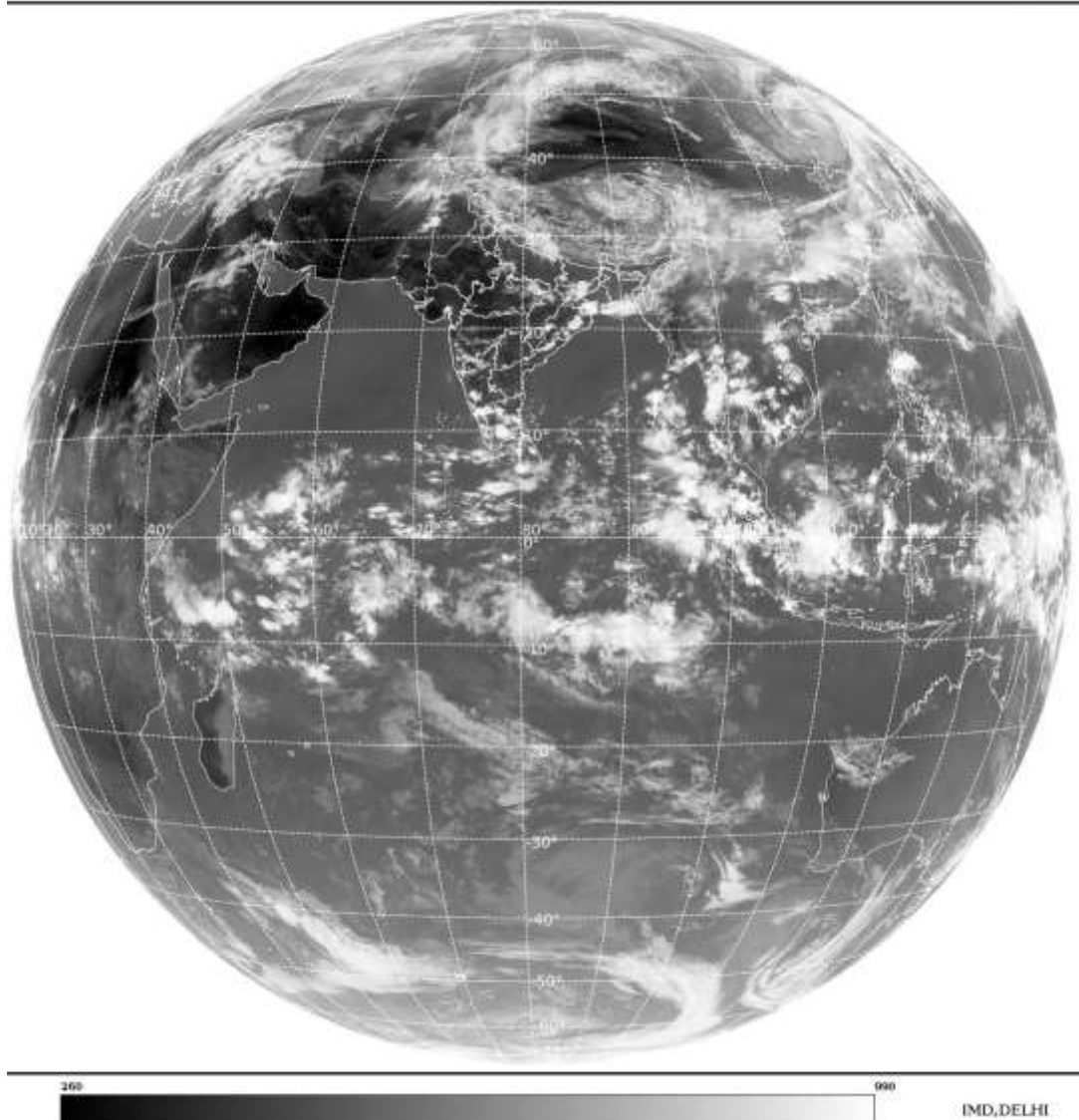
**BAY OF BENGAL & ANDAMAN SEA:-**

**SCT LOW/MED CLOUDS WITH EMBDD INT TO V INT CONVTN OVER SE BAY ANDAMAN SEA AND TENASSERIM COAST (.) SCT LOW/MED CLOUDS WITH EMBDD MOD TO INT CONVTN OVER EXT NORTH BAY GULF OF MARTABAN EC & SW BAY (.)**

**CLOUDS DESCRIPTION OUTSIDE INDIA:-**

SAT : INSAT-3D IMG  
Thermal Infrared1 Count 10.8 um  
L1B FULL DISK

11-05-2024/(0900 to 0926) GMT  
11-05-2024/(1430 to 1456) IST



**SCT LOW/MED CLOUDS WITH EMBDD MOD TO INT CONVTN OVER SRI LANKA PALK STR GULF OF MANNAR MALDIVES PAK NEPAL BHUTAN TIBET CHINA YELLOW SEA EAST CHINA SEA MYANMAR THAILAND GULF OF THAILAND CAMBODIA LAOS VIETNAM GULF OF TONKIN HAINAN SUMATRA STR OF MALACCA MALAYSIA BORNEO SOUTH CHINA SEA JAVA ILS & SEA CELEBES ILS & SEA PHILIPPINES SULU SEA AND OVER INDIAN OCEAN BET LAT 5.0N TO 15.0S LONG 40.0E TO 105.0E AND BET LAT 15.0S TO 30.0S LONG 65.0E TO 110.0E (.)**

**TOO 11/1540 HRS IST=**

**NNNN**



**LEGEND:-**

<b>REGION</b>	<b>NORTH</b>	<b>J&amp;K HP PJB HARY DLH UP UTRKND</b>	
	<b>EAST</b>	<b>BHR JHRKND CHTGH ORS WB SKM NORTH- EAST STATES</b>	
	<b>WEST</b>	<b>RAJ MP GUJ MAHA GOA</b>	
	<b>SOUTH</b>	<b>TLNGN AP KRNTK KER TN LKSDP ANDAMAN &amp; NICOBAR ILS</b>	
<b>CLOUD DISTRIBUTION</b>	<b>ISOL</b>	<b>ISOLATED (LESS THAN 25%)</b>	
	<b>SCT</b>	<b>SCATTERED (25 TO 50%)</b>	
	<b>BKN</b>	<b>BROKEN (51 TO 75%)</b>	
	<b>SLD</b>	<b>SOLID (GREATER THAN 75%)</b>	
<b>CLOUDS TOP TEMPERATURE</b>	<b>CTT</b>	<b>CLOUD TOP TEMPERATURE</b>	
<b>CONVECTION</b>	<b>WK CONV TN</b>	<b>WEAK CONVECTION (CTT GREATER THAN -25°C)</b>	
	<b>MOD CONV TN</b>	<b>MODERATE CONVECTION (CTT BETWEEN -25°C TO -40°C)</b>	
	<b>INT CONV TN</b>	<b>INTENSE CONVECTION (CTT BETWEEN -41°C TO -70°C)</b>	
	<b>V INT CONV TN</b>	<b>VERY INTENSE CONVECTION (CTT LESS THAN -70°C)</b>	
<b>METEOROLOGICAL SUB- DIVISIONS, STATES &amp; UNION TERRITORIES</b>	<b>ARUPR</b>	<b>ARUNACHAL PRADESH</b>	
	<b>BHR</b>	<b>BIHAR</b>	
	<b>CHTGH</b>	<b>CHHATTISGARH</b>	
	<b>COTL AP</b>	<b>COASTAL ANDHRA PRADESH</b>	
	<b>COTL KRNTK</b>	<b>COASTAL KARNATAKA</b>	
	<b>COTL ORS</b>	<b>COASTAL ORISSA</b>	
	<b>GUJ</b>	<b>GUJARAT</b>	
	<b>GWB</b>	<b>GANGETIC WEST BENGAL</b>	
	<b>HARY</b>	<b>HARYANA</b>	
	<b>DLH</b>	<b>DELHI</b>	
	<b>HP</b>	<b>HIMACHAL PRADESH</b>	
	<b>J&amp;K</b>	<b>JAMMU AND KASHMIR</b>	
	<b>JHRKND</b>	<b>JHARKHAND</b>	
	<b>KER</b>	<b>KERALA</b>	
	<b>KKN</b>	<b>KONKAN</b>	
	<b>LKSDP</b>	<b>LAKSHADWEEP</b>	
	<b>M MAHA</b>	<b>MADHYA MAHARASHTRA</b>	
	<b>MAHA</b>	<b>MAHARASHTRA</b>	
	<b>MANI</b>	<b>MANIPUR</b>	
	<b>MEGHA</b>	<b>MEGHALAYA</b>	
	<b>MIZO</b>	<b>MIZORAM</b>	
	<b>MP</b>	<b>MADHYA PRADESH</b>	
		<b>MRTHWD</b>	<b>MARATHWADA</b>
		<b>NAGA</b>	<b>NAGALAND</b>
<b>N COTL AP</b>		<b>NORTH COASTAL ANDHRA PRADESH</b>	
<b>NIK</b>		<b>NORTH INTERIOR KARNATAKA</b>	

	<b>ORS</b>	<b>ORISSA</b>
	<b>PJB</b>	<b>PUNJAB</b>
	<b>RAJ</b>	<b>RAJASTHAN</b>
	<b>RYLSM</b>	<b>RAYALASEEMA</b>
	<b>SAU &amp; KUTCH</b>	<b>SAURASHTRA &amp; KUTCH</b>
	<b>SHWB</b>	<b>SUB-HIMALAYAN WEST BENGAL</b>
	<b>SIK</b>	<b>SOUTH INTERIOR KARNATAKA</b>
	<b>SKM</b>	<b>SIKKIM</b>
	<b>TLNGN</b>	<b>TELANGANA</b>
	<b>TN</b>	<b>TAMIL NADU</b>
	<b>TRP</b>	<b>TRIPURA</b>
	<b>UP</b>	<b>UTTAR PRADESH</b>
	<b>UTRKND</b>	<b>UTTARAKHAND</b>
	<b>VID</b>	<b>VIDHARBHA</b>
	<b>SHWB</b>	<b>SUB HIMALAYAN WEST BENGAL</b>
	<b>GWB</b>	<b>GANGETIC WEST BENGAL</b>
	<b>ARSEA</b>	<b>ARABIAN SEA</b>
	<b>ILS</b>	<b>ISLANDS</b>
<b>MISCELLANEOUS</b>	<b>ASSW</b>	<b>IN ASSOCIATION WITH</b>
	<b>ASSTD</b>	<b>ASSOCIATED</b>
	<b>LLC</b>	<b>LOW LEVEL CIRCULATION</b>
	<b>EMBDD</b>	<b>EMBEDDED</b>
	<b>N/HOOD</b>	<b>NEIGHBOURHOOD</b>
	<b>EXT</b>	<b>EXTREME</b>