



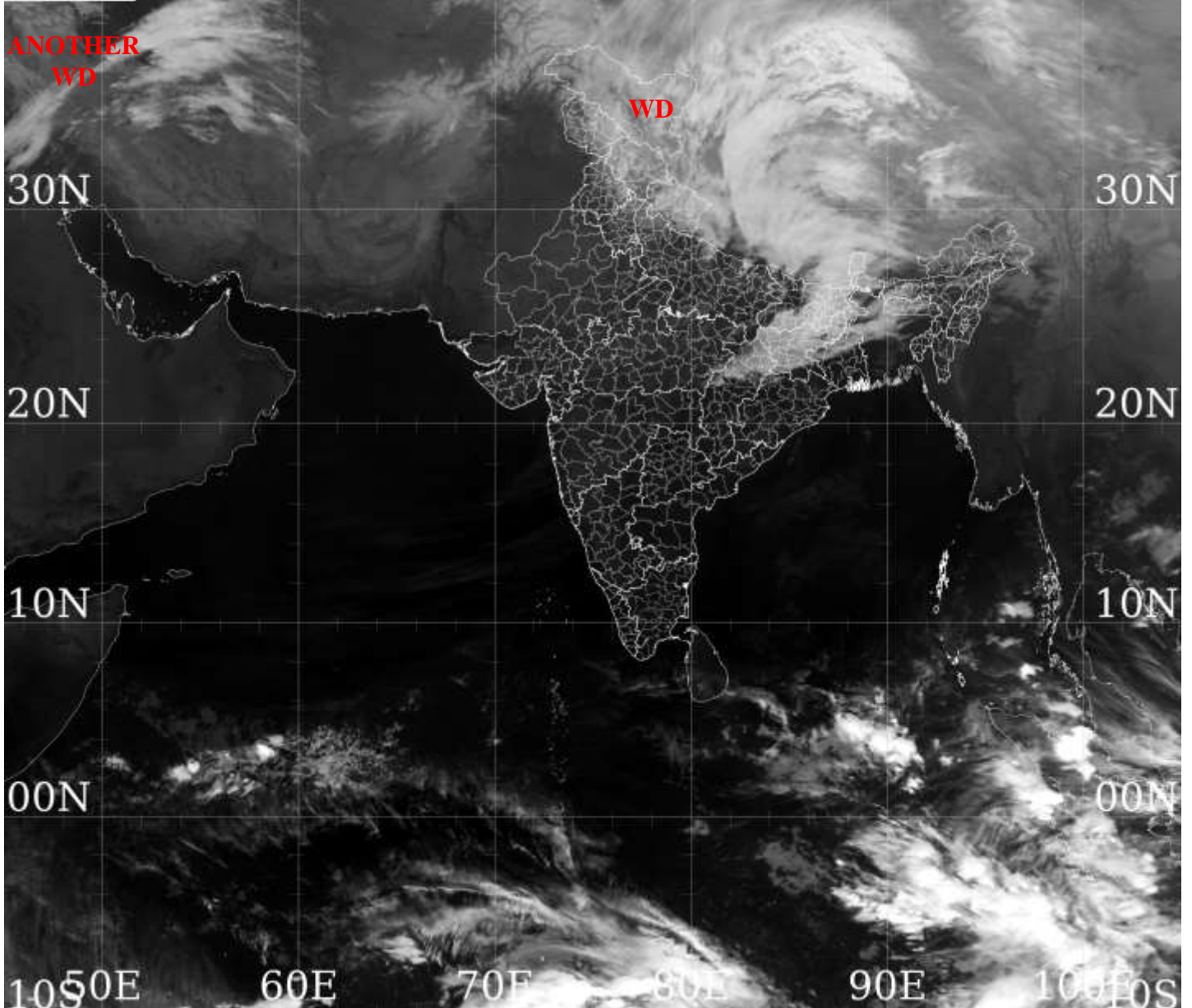
भारत मौसम विज्ञान विभाग
पृथ्वी विज्ञान मंत्रालय
India Meteorological Department
Ministry of Earth Sciences



**SATELLITE BULLETIN BASED ON SATELLITE
IMAGERIES AND PRODUCTS**
03.02.2022 TIME 2100 UTC



60E 70E 80E 90E 100E
MSG-1: SEVIRI [ir108_inv]
20220203_2030UTC



TCIN50 DEMS 032100

SATELLITE BULLETIN BASED ON INSAT-3D PIC OF 032030 UTC (.)

REGION COVERED BETWEEN LAT 50.0°N TO 30.0°S AND LONG 40.0°E TO 125.0°E (.)

SALIENT FEATURES:-

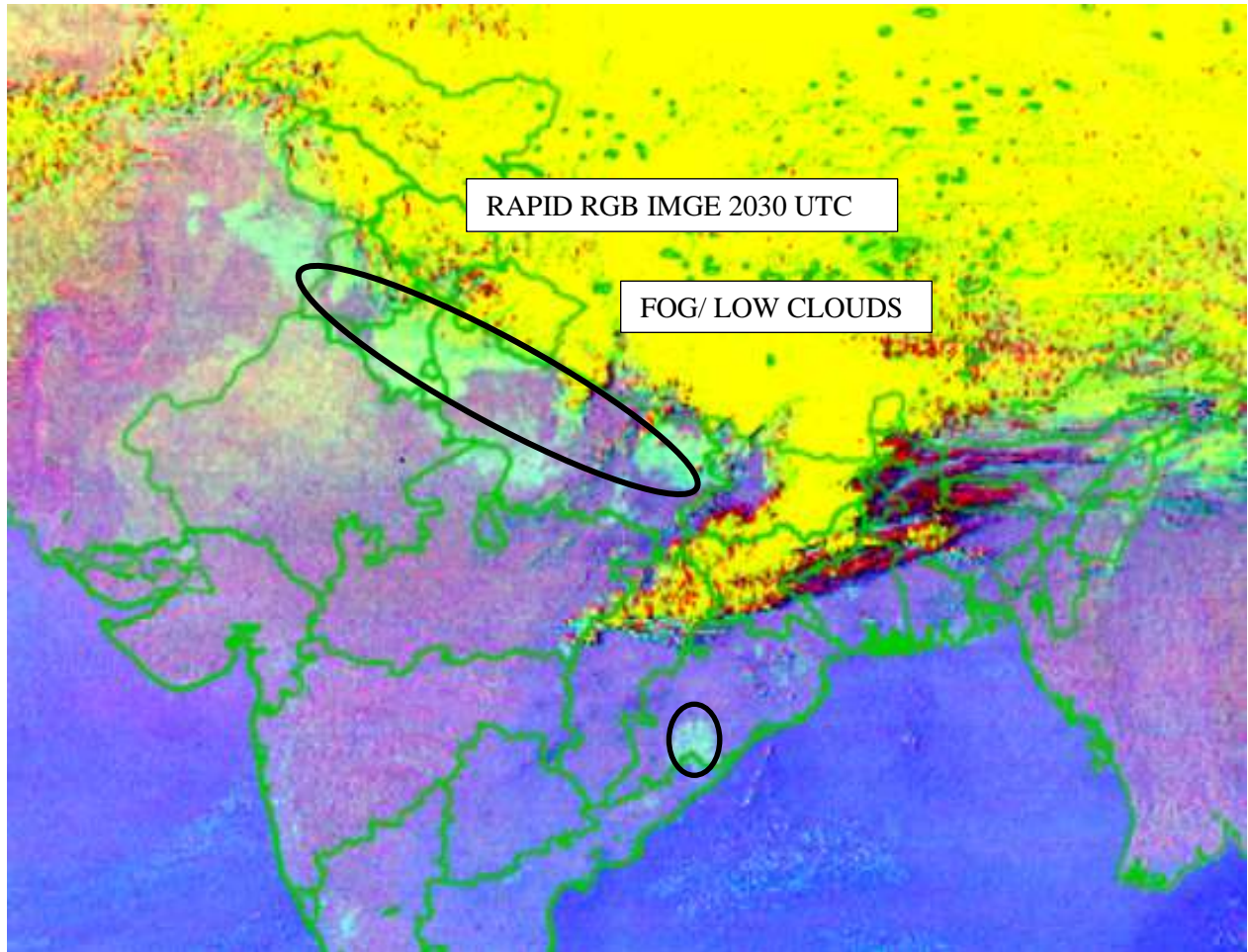
WESTERN DISTURBANCE (WD):-

SCT MULTILAYERED CLOUDS OVER LADAKH J&K HP UTRKND N UP NEPAL TIBET ADJ CHINA
IN ASSW **WD** OVER THE AREA (.)

SCT MULTILAYERED CLOUDS OVER BLACK SEA S CASPIAN SEA AND N/HOOD IN ASSW
ANOTHER WD OVER THE AREA (.)

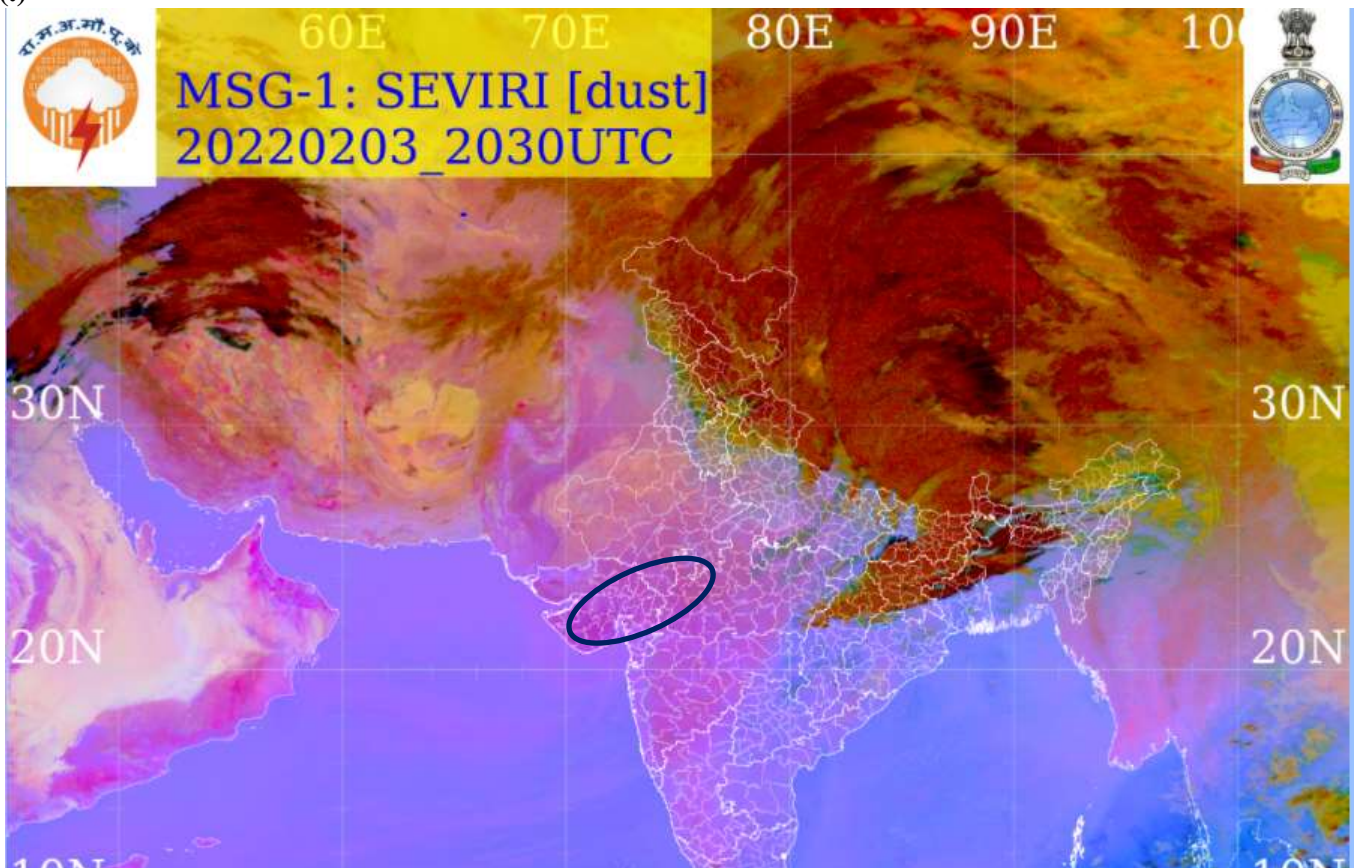
FOG/LOW CLOUDS:-

NIGHT MICROPHYSICS PRODUCT OF INSAT -3D AT 2030 UTC INDICATES SCT FOG/LOW CLOUDS OVER W PJB HARY DLH UP AND ISOL OVER S ORS (.)



DUST:-

METESAT-8 RGB DUST PRODUCT AT 2030 UTC INDICATES DUST OVER GUJ EXT SE RAJ ADJ SW MP (.)



CLOUDS DESCRIPTION WITHIN INDIA:-

NORTH:-

SCT TO BKN LOW/MED CLOUDS WITH EMBDD MOD TO INT CONVTN OVER NE LADAKH N HP UTRKND EXT PARTS OF UP AND WK TO MOD CONVTN OVER J&K S HP NE PJB EXT N HARY EXT SE UP (.) SCT LOW/MED CLOUDS OVER S PJB S HARY DLH REST UP (.)

EAST:-

SCT LOW/MED CLOUDS OVER WITH EMBDD MOD TO INT CONVTN OVER BHR JHRKND SKM AND WK TO MOD CONVTN OVER N CHTGH N GWB SHWB ARUPR W MEGHA ADJ W ASSAM (.) SCT LOW/MED CLOUDS OVER S CHTGH ORS S GWB REST NE STATES (.)

WEST:-

SCT LOW/MED CLOUDS OVER WITH EMBDD ISOL WK TO MOD CONVTN OVER EXT E MP (.) ISOL LOW/MED CLOUDS OVER REST E MP E VID (.)

SOUTH:-

SCT LOW/MED CLOUDS OVER N TLNGN N COTL AP KER TN ANDAMAN & NICOBAR ILS (.)

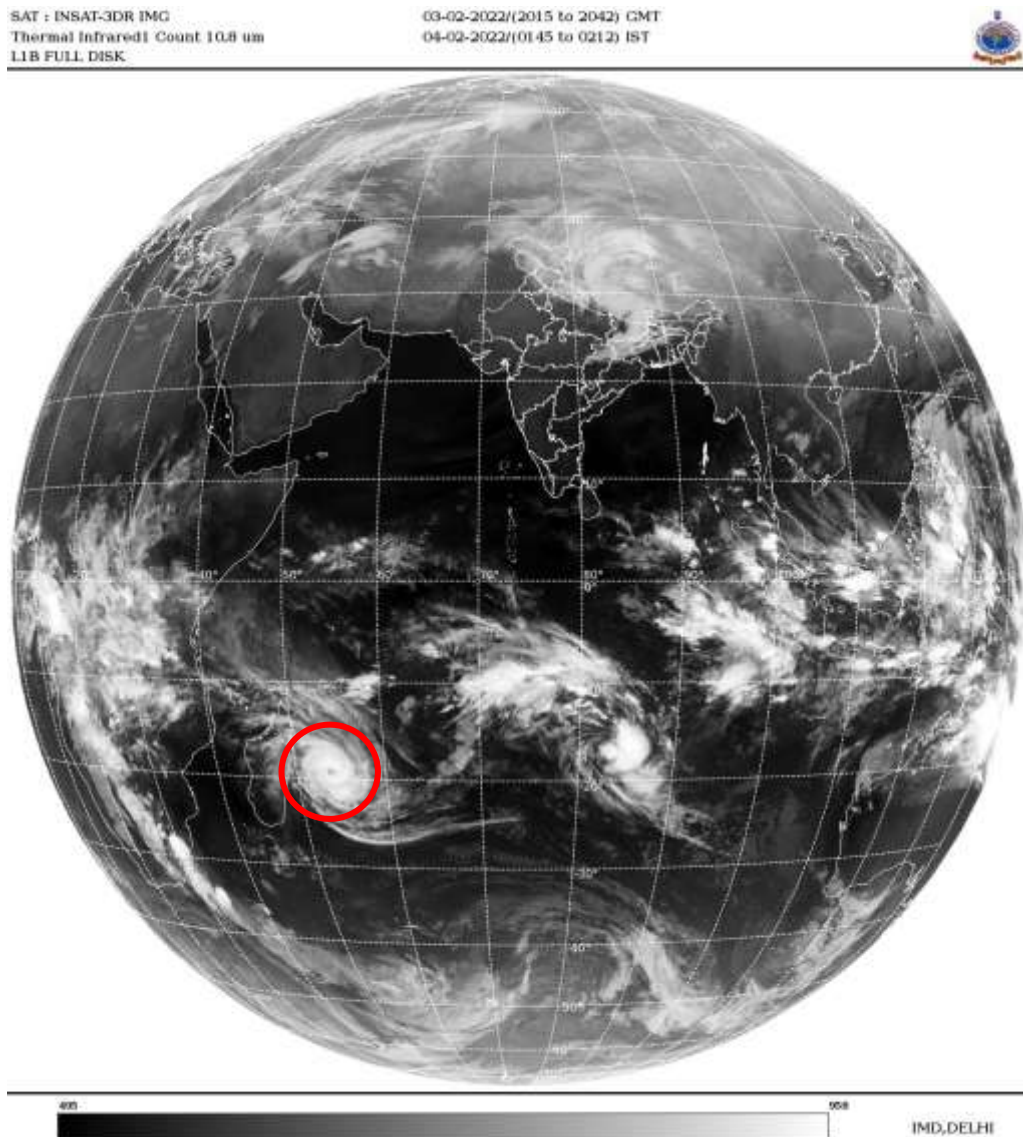
ARABIAN SEA:-

SCT LOW/MED CLOUDS OVER SOUTH ARSEA (.)

BAY OF BENGAL & ANDAMAN SEA:-

SCT LOW/MED CLOUDS WITH EMBDD MOD TO INT CONVTN OVER EXTREME S BAY ADJ EQUATORIAL INDIA OCEAN (.) SCT LOW/MED CLOUDS OVER SE BAY & SOUTH ANDAMAN SEA (.)

CLOUDS DESCRIPTION OUTSIDE INDIA:-



VORTEX (BATSIRAI) OVER SOUTH INDIAN OCEAN:-

VORTEX (**BATSIRAI**) OVER SOUTH INDIAN OCEAN CENTERED NEAR **19.4S / 54.4E** (.) INTENSITY **T5.5/5.5** (.) ASSTD BKN LOW/MED CLOUDS WITH EMBDD INT TO V INT CONVTN OVER AREA BET LAT 15.0S TO 23.0S LONG 51.0E TO 58.0E (.)

SCT LOW/MED CLOUDS WITH EMBDD MOD TO INT CONVTN OVER NEPAL TIBET CHINA SUMATRA STR OF MALACCA MALASIYA BORNEO ADJ SOUTH CHINA SEA JAVA SEA CELEBES ILS & SEA PHILIPPINES E CHINA SEA N MADAGASCAR N MOZAMBIQUE CHANNEL AND OVER INDIAN OCEAN BET LAT 5.0N TO 12.0S LONG 50.0E TO 102.0E AND BET LAT 12.0S TO 27.0S LONG 50.0E TO 95.0E (.)

TOO 04/0235 HRS IST=

NNNN

LEGEND:-

REGION	NORTH	J&K HP PJB HARY DLH UP UTRKND
	EAST	BHR JHRKND CHTGH ORS WB SKM NORTH- EAST STATES
	WEST	RAJ MP GUJ MAHA GOA
	SOUTH	TLNGN AP KRNTK KER TN LKSDP ANDAMAN & NICOBAR ILS

CLOUD DISTRIBUTION	ISOL	ISOLATED (LESS THAN 25%)
	SCT	SCATTERED (25 TO 50%)
	BKN	BROKEN (51 TO 75%)
	SLD	SOLID (GREATER THAN 75%)
CLOUDS TOP TEMPERATURE	CTT	CLOUD TOP TEMPERATURE
CONVECTION	WK CONVTN	WEAK CONVECTION (CTT GREATER THAN -25°C)
	MOD CONVTN	MODERATE CONVECTION (CTT BETWEEN -25°C TO -40°C)
	INT CONVTN	INTENSE CONVECTION (CTT BETWEEN -41°C TO -70°C)
	V INT CONVTN	VERY INTENSE CONVECTION (CTT LESS THAN -70°C)
METEOROLOGICAL SUB-DIVISIONS, STATES & UNION TERRITORIES	ARUPR	ARUNACHAL PRADESH
	BHR	BIHAR
	CHTGH	CHHATTISGARH
	COTL AP	COASTAL ANDHRA PRADESH
	COTL KRNTK	COASTAL KARNATAKA
	COTL ORS	COASTAL ORISSA
	GUJ	GUJARAT
	GWB	GANGETIC WEST BENGAL
	HARY	HARYANA
	DLH	DELHI
	HP	HIMACHAL PRADESH
	J&K	JAMMU AND KASHMIR
	JHRKND	JHARKHAND
	KER	KERALA
KKN	KONKAN	

	LKSDP	LAKSHADWEEP
	M MAHA	MADHYA MAHARASHTRA
	MAHA	MAHARASHTRA
	MANI	MANIPUR
	MEGHA	MEGHALAYA
	MIZO	MIZORAM
	MP	MADHYA PRADESH
	MRTHWD	MARATHWADA
	NAGA	NAGALAND
	N COTL AP	NORTH COASTAL ANDHRA PRADESH
	NIK	NORTH INTERIOR KARNATAKA
	ORS	ORISSA
	PJB	PUNJAB
	RAJ	RAJASTHAN
	RYLSM	RAYALASEEMA
	SAU & KUTCH	SAURASHTRA & KUTCH
	SHWB	SUB-HIMALAYAN WEST BENGAL
	SIK	SOUTH INTERIOR KARNATAKA
	SKM	SIKKIM
	TLNGN	TELANGANA
	TN	TAMIL NADU
	TRP	TRIPURA
	UP	UTTAR PRADESH
	UTRKND	UTTARAKHAND
	VID	VIDHARBHA
	SHWB	SUB HIMALAYAN WEST BENGAL
	GWB	GANGETIC WEST BENGAL
	ARSEA	ARABIAN SEA
	ILS	ISLANDS
MISCELLANEOUS	ASSW	IN ASSOCIATION WITH
	ASSTD	ASSOCIATED
	LLC	LOW LEVEL CIRCULATION
	EMBDD	EMBEDDED
	N/HOOD	NEIGHBOURHOOD
	EXT	EXTREME