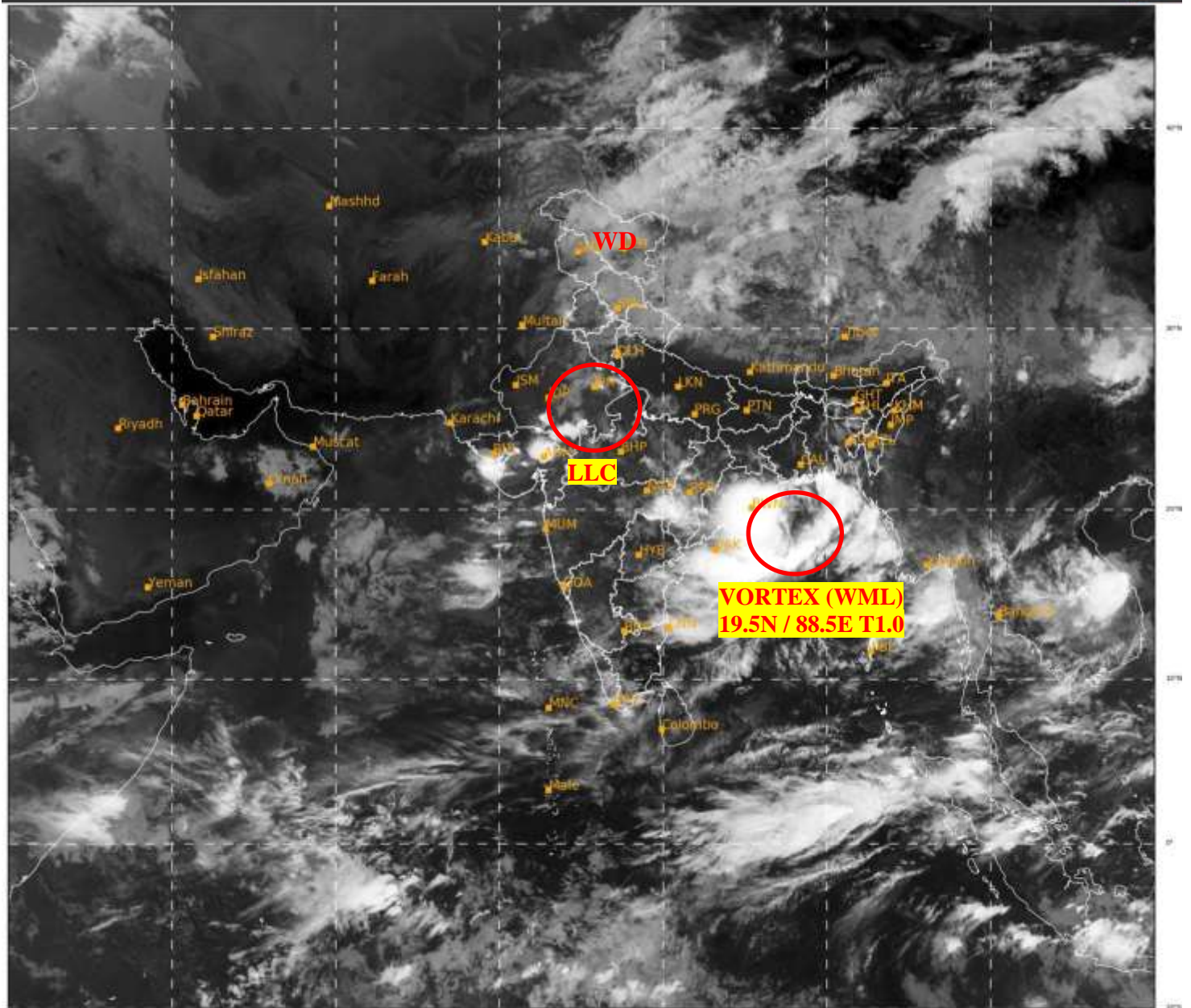




SATELLITE BULLETIN BASED ON SATELLITE
IMAGERIES AND PRODUCTS
12.09.2021 TIME 0300 UTC

SAT : INSAT-3D IMG
IMG_TIR1 10.8 um
LIC Mercator

12-09-2021/(0300 to 0326) GMT
12-09-2021/(0830 to 0856) IST



442

937

IMD, DELHI

TCIN50 DEMS 120300

SATELLITE BULLETIN BASED ON INSAT-3D PIC OF 120300 UTC (.)

REGION COVERED BETWEEN LAT 50.0°N TO 30.0°S AND LONG 40.0°E TO 125.0°E (.)

SALIENT FEATURES:-

VORTEX (WML) OVER NORTH WEST BAY & N/HOOD:-

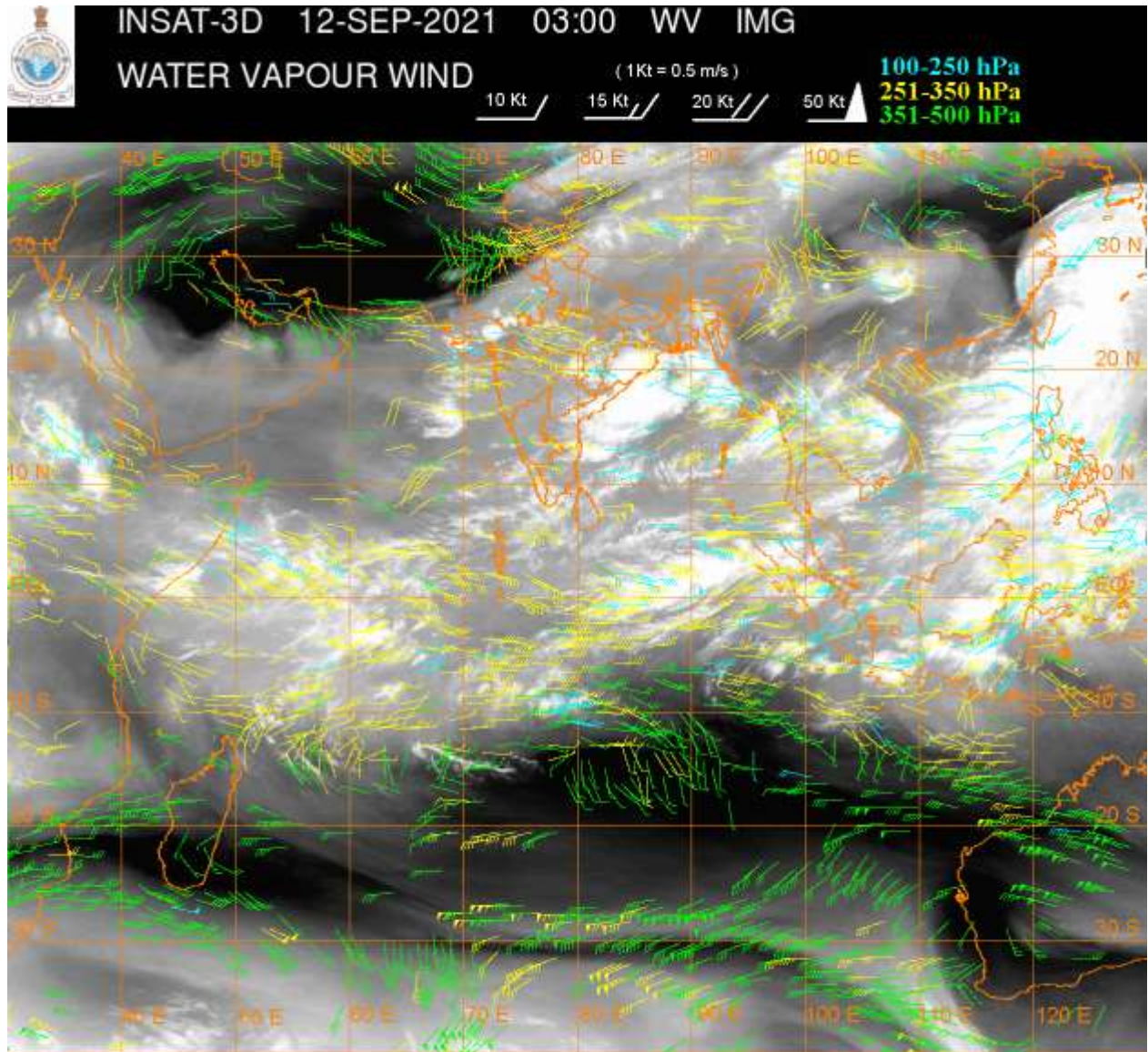
VORTEX OVER NW BAY & N/HOOD WITH CENTERED **WITHIN HALF A DEGREE OF 19.5N / 88.0E** (.) INTENSITY **T1.0** (.) ASSTD BKN LOW/MED CLOUDS WITH EMBDD INT TO V INT CONVTN OVER N ADJ C BAY & E ORS (.) MINIMUM CTT MINUS **93** DEG C (.)

LLC OVER EAST RAJASTHAN & N/HOOD:-

LLC OVER E RAJ & N/HOOD (.) ASSTD SCT TO BKN LOW/MED CLOUDS WITH EMBDD MOD TO INT CONVTN OVER E RAJ ADJ NW MP (.)

WESTERN DISTURBANCE (WD):-

SCT MULTILAYERED CLOUDS OVER N PAK J&K LADAKH PJB N HARY HP UTRKND TIBET ADJ CHINA & N/HOOD IN ASSW **WD** OVER THE AREA (.)



CLOUDS DESCRIPTION WITHIN INDIA:-

NORTH:-

SCT LOW/MED CLOUDS WITH EMBDD ISOL MOD TO INT CONVTN OVER EXT PARTS OF PJB EXT NW UP (.) SCT LOW/MED CLOUDS WITH EMBDD WK TO MOD CONVTN OVER LADAKH J&K HP UTRKND REST PJB W HARY REST NW & SW UP (.) SCT LOW/MED CLOUDS OVER E HARY DLH NE UP (.)

EAST:-

BKN LOW/MED CLOUDS WITH EMBDD INT TO V INT CONVTN OVER E ORS (MINIMUM CTT MINUS **93** DEG C) (.) SCT LOW/MED CLOUDS WITH EMBDD MOD TO INT CONVTN OVER S CHTGH SC ORS (.) SCT LOW/MED CLOUDS WITH EMBDD WK TO MOD CONVTN OVER S JHRKND N CHTGH C BHR EXT PARTS OF GWB N SKM MEGHA ADJ W ASSAM ARUPR TRP & MIZO (.) ISOL TO SCT LOW/MED CLOUDS OVER NW BHR N JHRKND REST GWB NAGA (.)

WEST:-

SCT TO BKN LOW/MED CLOUDS WITH EMBDD INT TO V INT CONVTN OVER NC & EXT W GUJ (MINIMUM CTT MINUS **74** DEG C) (.) SCT LOW/MED CLOUDS WITH EMBDD MOD TO INT CONVTN OVER EXT NE & SC RAJ EXT W & SE MP SE VID AND ISOL WK TO MOD CONVTN OVER C MP REST E RAJ GUJ REST VID (.) SCT LOW/MED CLOUDS OVER REST RAJ REST GUJ REST MAHA & GOA (.)

SOUTH:-

SCT LOW/MED CLOUDS WITH EMBDD INT TO V INT CONVTN OVER EXT N COTL AP (MINIMUM CTT MINUS **73** DEG C) (.) SCT LOW/MED CLOUDS WITH EMBDD MOD TO INT CONVTN OVER REST N COTL AP AND WK TO MOD CONVTN OVER S COTL AP RYLSME TLNGN KRNTK ANDAMAN & NICOBAR ILS (.) SCT LOW/MED CLOUDS OVER W TLNGN LKSDP ILS (.)

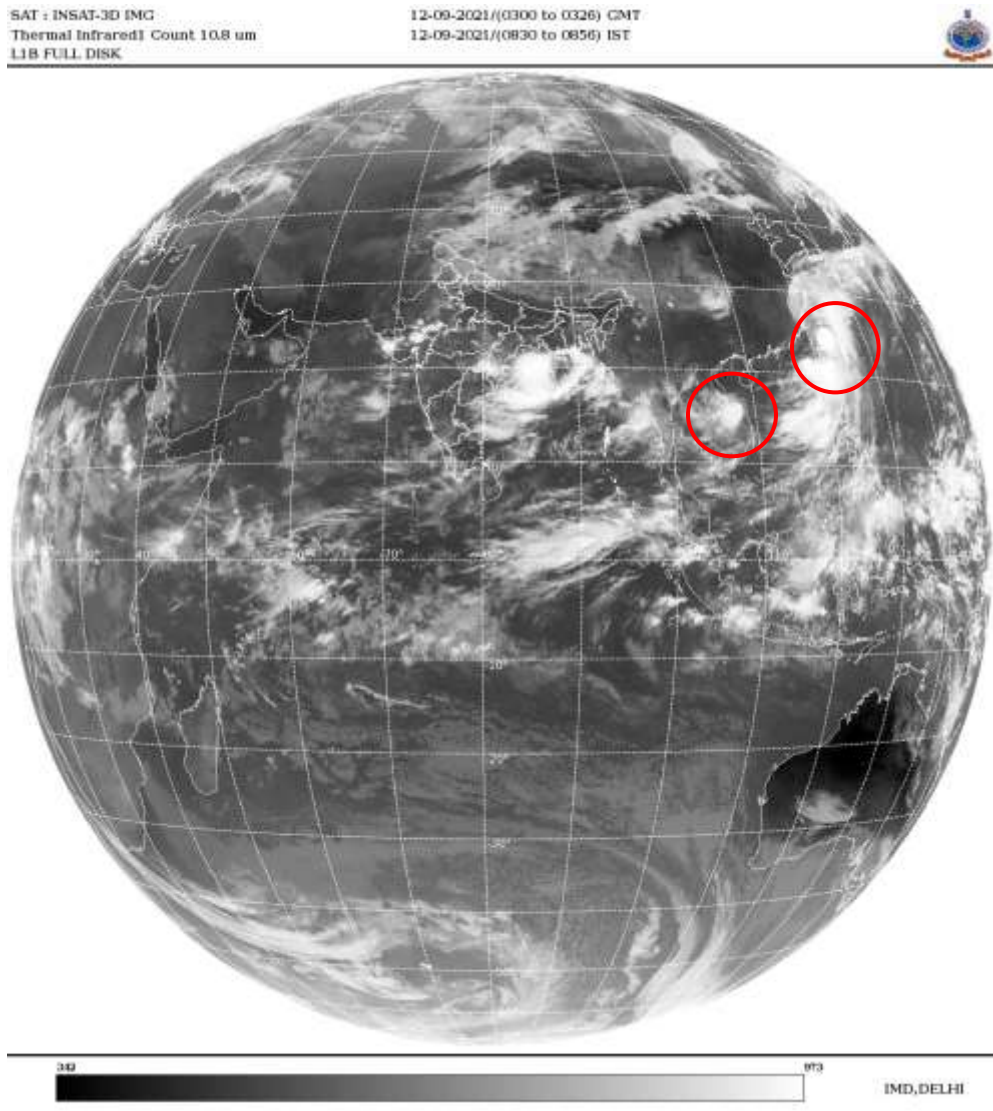
ARABIAN SEA:-

SCT LOW/MED CLOUDS WITH EMBDD MOD TO INT CONVTN OVER GULF OF KUTCH ADJ NE ARSEA ALSO OVER EC ARSEA (.) SCT LOW/MED CLOUDS OVER WITH EMBDD WK TO MOD CONVTN OVER SE ARSEA COMRIN (.)

BAY OF BENGAL & ANDAMAN SEA:-

SCT TO BKN LOW/MED CLOUDS WITH EMBDD INT TO V INT CONVTN OVER NORTH AND WEST CENTRAL BAY (.) SCT LOW/MED CLOUDS WITH EMBDD MOD TO INT CONVTN OVER REST BAY AND N ANDAMAN SEA (.)

CLOUDS DESCRIPTION OUTSIDE INDIA:-



VORTEX (CHANTHU) OVER EAST CHINA SEA & N/HOOD:-

VORTEX (**CHANTHU**) OVER EAST CHINA SEA & N/HOOD CENTERED NEAR **24.5N / 122.4E** (.) INTENSITY **T 5.5 / 6.0** (.) ASSTD BKN TO SLD LOW/MED CLOUDS WITH EMBDD INT TO V INT CONVTN OVER AREA BET LAT 18.0N TO 25.5N LONG 117.0E TO 124.0E & TAIWAN N PHILIPPINES (.)

ANOTHER VORTEX (CONSON) OVER SOUTH CHINA SEA ADJ VIETNAM & N/HOOD:-

VORTEX (**CONSON**) OVER SOUTH CHINA SEA ADJ VIETNAM & N/HOOD CENTERED NEAR **15.2N / 109.2E** (.) INTENSITY **T 2.0 / 2.5** (.) ASSTD BKN LOW/MED CLOUDS WITH EMBDD INT TO V INT CONVTN OVER S CHINA SEA ADJ VIETNAM & N/HOOD (.)

SCT LOW/MED CLOUDS WITH EMBDD MOD TO INT CONVTN OVER GULF OF MANNAR PAK TIBET CHINA E CHINA SEA TAIWAN MYANMAR THAILAND GULF OF THAILAND CAMBODIA LAOS VIETNAM SUMATRA STR OF MALACCA MALAY PENINSULA BORNEO S CHINA SEA JAVA ILS & SEA CELEBES ILS & SEA PHILIPPINES SULU SEA AND OVER INDIAN OCEAN BET LAT 5.0N TO 14.0S LONG 44.0E TO 103.5E (.)

TOO 12/0930EF=

NNNN

LEGEND:-

| | | |
|---------------|--------------|--|
| REGION | NORTH | J&K HP PJB HARY DLH UP UTRKND |
| | EAST | BHR JHRKND CHTGH ORS WB SKMNORTH- EAST STATES |
| | WEST | RAJ MP GUJ MAHA GOA |
| | SOUTH | TLNGN AP KRNTK KER TN LKSDP ANDAMAN & NICOBAR ILS |

| | | |
|---|---------------------|---|
| CLOUD DISTRIBUTION | ISOL | ISOLATED (LESS THAN 25%) |
| | SCT | SCATTERED (25 TO 50%) |
| | BKN | BROKEN (51 TO 75%) |
| | SLD | SOLID (GREATER THAN 75%) |
| CLOUDS TOP TEMPERATURE | CTT | CLOUD TOP TEMPERATURE |
| CONVECTION | WK CONVTN | WEAK CONVECTION (CTT GREATER THAN -25°C) |
| | MOD CONVTN | MODERATE CONVECTION (CTT BETWEEN -25°C TO -40°C) |
| | INT CONVTN | INTENSE CONVECTION (CTT BETWEEN -41°C TO -70°C) |
| | V INT CONVTN | VERY INTENSE CONVECTION (CTT LESS THAN -70°C) |
| METEOROLOGICAL SUB-DIVISIONS, STATES & UNION TERRITORIES | ARUPR | ARUNACHAL PRADESH |
| | BHR | BIHAR |
| | CHTGH | CHHATTISGARH |
| | COTL AP | COASTAL ANDHRA PRADESH |
| | COTL KRNTK | COASTAL KARNATAKA |
| | COTL ORS | COASTAL ORISSA |
| | GUJ | GUJARAT |
| | GWB | GANGETIC WEST BENGAL |
| | HARY | HARYANA |
| | DLH | DELHI |
| | HP | HIMACHAL PRADESH |
| | J&K | JAMMU AND KASHMIR |
| | JHRKND | JHARKHAND |
| | KER | KERALA |
| | KKN | KONKAN |
| | LKSDP | LAKSHADWEEP |
| | M MAHA | MADHYA MAHARASHTRA |
| | MAHA | MAHARASHTRA |
| | MANI | MANIPUR |
| | MEGHA | MEGHALAYA |
| | MIZO | MIZORAM |
| | MP | MADHYA PRADESH |
| | | MRTHWD |
| NAGA | | NAGALAND |
| N COTL AP | | NORTH COASTAL ANDHRA PRADESH |

| | | |
|----------------------|------------------------|----------------------------------|
| | NIK | NORTH INTERIOR KARNATAKA |
| | ORS | ORISSA |
| | PJB | PUNJAB |
| | RAJ | RAJASTHAN |
| | RYLSM | RAYALASEEMA |
| | SAU & KUTCH | SAURASHTRA & KUTCH |
| | SHWB | SUB-HIMALAYAN WEST BENGAL |
| | SIK | SOUTH INTERIOR KARNATAKA |
| | SKM | SIKKIM |
| | TLNGN | TELANGANA |
| | TN | TAMIL NADU |
| | TRP | TRIPURA |
| | UP | UTTAR PRADESH |
| | UTRKN | UTTARAKHAND |
| | VID | VIDHARBHA |
| | SHWB | SUB HIMALAYAN WEST BENGAL |
| | GWB | GANGETIC WEST BENGAL |
| | ARSEA | ARABIAN SEA |
| | ILS | ISLANDS |
| MISCELLANEOUS | ASSW | IN ASSOCIATION WITH |
| | ASSTD | ASSOCIATED |
| | LLC | LOW LEVEL CIRCULATION |
| | EMBDD | EMBEDDED |
| | N/HOOD | NEIGHBOURHOOD |
| | EXT | EXTREME |