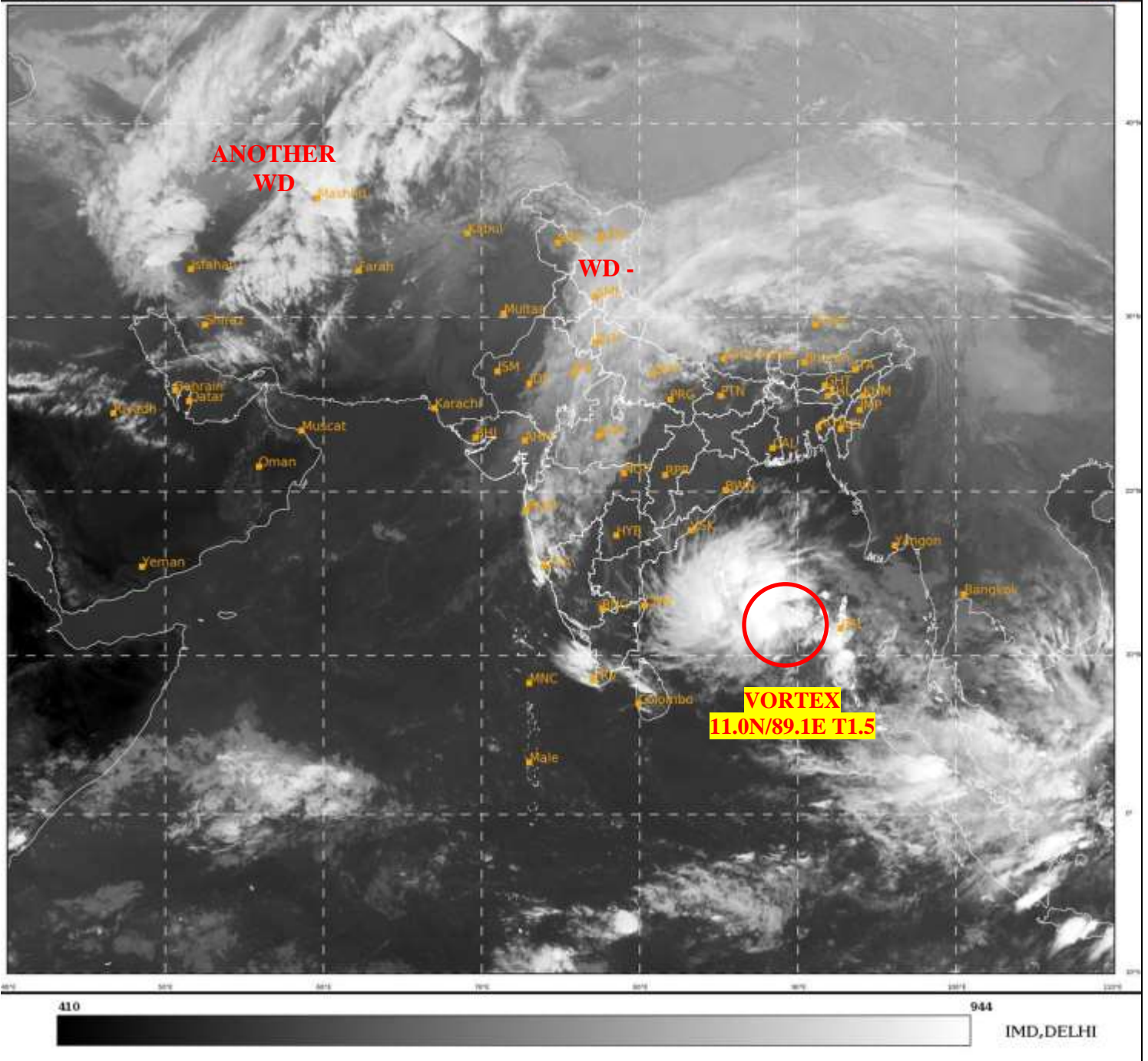




SATELLITE BULLETIN BASED ON SATELLITE
IMAGERIES AND PRODUCTS
02.12.2021 TIME 1200 UTC

SAT : INSAT-3D IMG
IMG_TIR1 10.8 um
LIC Mercator

02-12-2021/(1200 to 1226) GMT
02-12-2021/(1730 to 1756) IST



TCIN50 DEMS 021200

SATELLITE BULLETIN BASED ON INSAT-3D PIC OF 021200 UTC (.)

REGION COVERED BETWEEN LAT 50.0°N TO 30.0°S AND LONG 40.0°E TO 125.0°E (.)

SALIENT FEATURES:-

VORTEX OVER SE BAY:-

VORTEX OVER SE BAY INTENSIFIED AND NOW LAY CENTERED WITHIN HALF A DEG OF **11.0N/89.1E** (.) INTENSITY **T1.5** (.) THE SYSTEM MOVED NORTH-WESTWARD IN LAST 03 HOURS ASSOCIATED INTENSE CLOUD MASS IS SHEARED TO THE NW OF THE LOW LEVEL CIRCULATION CENTRE DEPICTING A SHEAR PATTERN (.) THE CONVECTIVE CLOUD CLUSTERS ARE SEEN CONSOLIDATING IN THE NW SECTOR OVER LAST THREE HOURS (.) ASSTD SCT TO BKN LOW/MED CLOUDS WITH EMMDD INT TO V INT CONV'TN OVER SE ADJ SW & CENTRAL BAY BET LAT 9.5N TO 17.5N LONG 81.5E TO 92.5E & ANDAMAN ILS ADJ ANDAMAN SEA (.) MINIMUM CTT MINUS **93** DEG C (.)

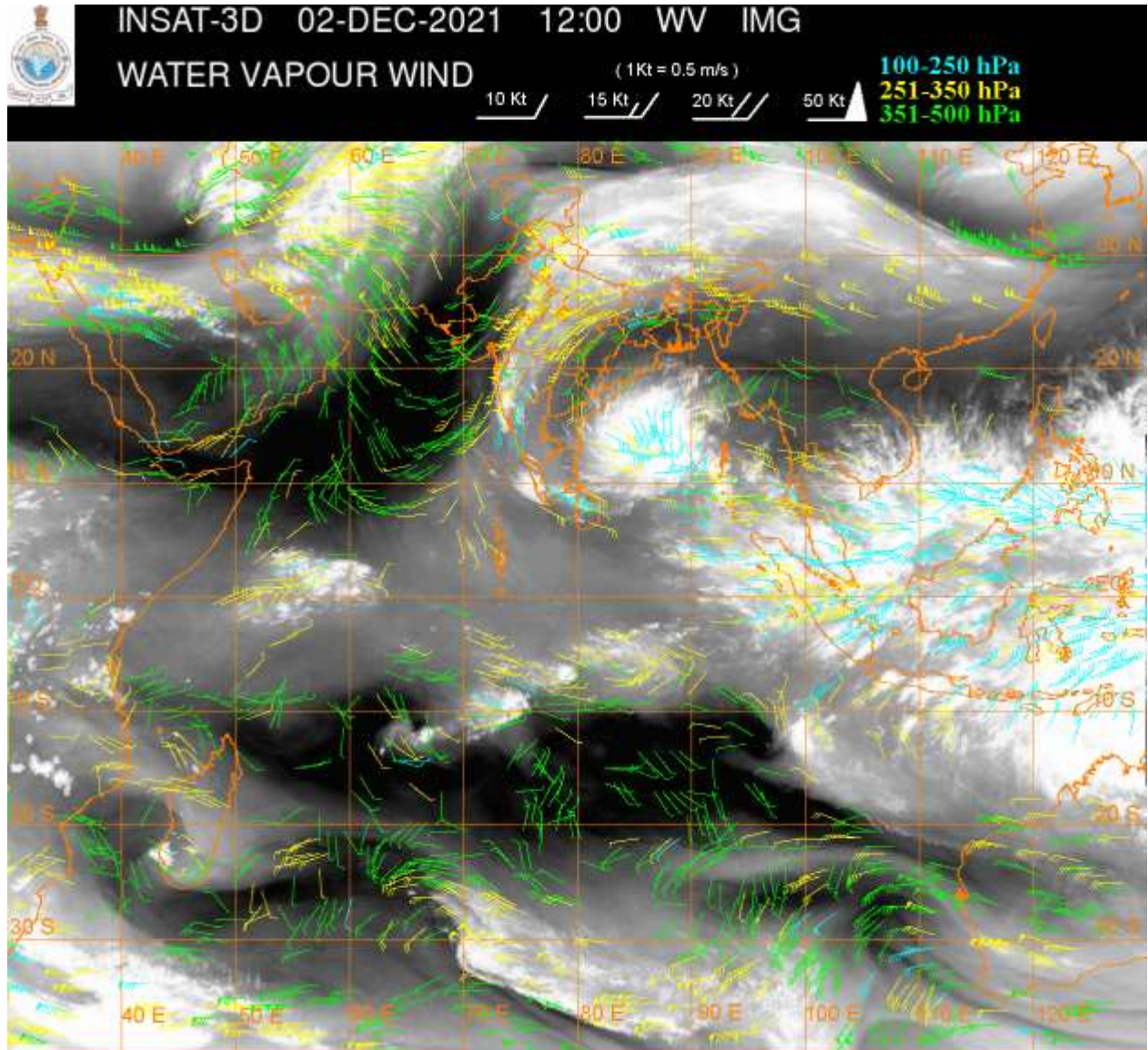
CONVECTION OVER EC ARABIAN SEA OFF MAHARASHTRA COAST & N/HOOD:-

CONVECTION OVER EC ARSEA OFF MAHARASHTRA COAST AREA HAS CEASED TO EXIST AND ONLY OUTFLOW IS OBSERVED OVER NW INDIA CAUSED BY DEEP WESTERLY TROUGH (.) INT TO V INT CONVECTION PERSIST OVER OFF S KKN-GOA COAST (.)

WESTERN DISTURBANCE (WD):-

SCT TO BKN MULTILAYERED CLOUDS OVER LADAKH HP UTRKND PJB HARY DLH RAJ E GUJ MP UP NEPAL TIBET IN ASSW **WD** OVER THE AREA (.)

SCT MULTILAYERED CLOUDS OVER CASPIAN SEA IRAN AND N/HOOD IN ASSW **ANOTHER WD** OVER THE AREA (.)



CLOUDS DESCRIPTION WITHIN INDIA:-

NORTH:-

SCT TO BKN LOW/MED CLOUDS WITH EMBDD MOD TO INT CONVTN OVER E HP UTRKND N UP AND WK TO MOD CONVTN OVER REST LADAKH E J&K W HP PJB HARY SW UP (.)

EAST:-

SCT LOW/MED CLOUDS WITH EMBDD ISOL WK TO MOD CONVTN OVER BHR SKM SHWB N ARUPR (.) SCT LOW/MED CLOUDS OVER ORS MEGHA NAGA MANI (.)

WEST:-

SCT LOW/MED CLOUDS WITH EMBDD MOD TO INT CONVTN OVER EC RAJ ADJ W MP KKN AND WK TO MOD CONVTN OVER REST E RAJ E GUJ REST W MP MRTHWD W VID GOA (.) SCT LOW/MED CLOUDS OVER W GUJ E MP (.)

SOUTH:-

SCT LOW/MED CLOUDS WITH EMBDD INT TO V INT CONVTN OVER KER ANDAMAN ILS AND MOD TO INT CONVTN OVER W NIK SW SIK (.)SCT LOW/MED CLOUDS WITH EMBDD WK TO MOD CONVTN OVER COTL AP S TN & NICOBAR ILS (.) SCT LOW/MED CLOUDS OVER TLNGN E RYLSM S COTL AP REST KRNTK RYLSM S COTL AP REST TN LKSDP ILS (.)

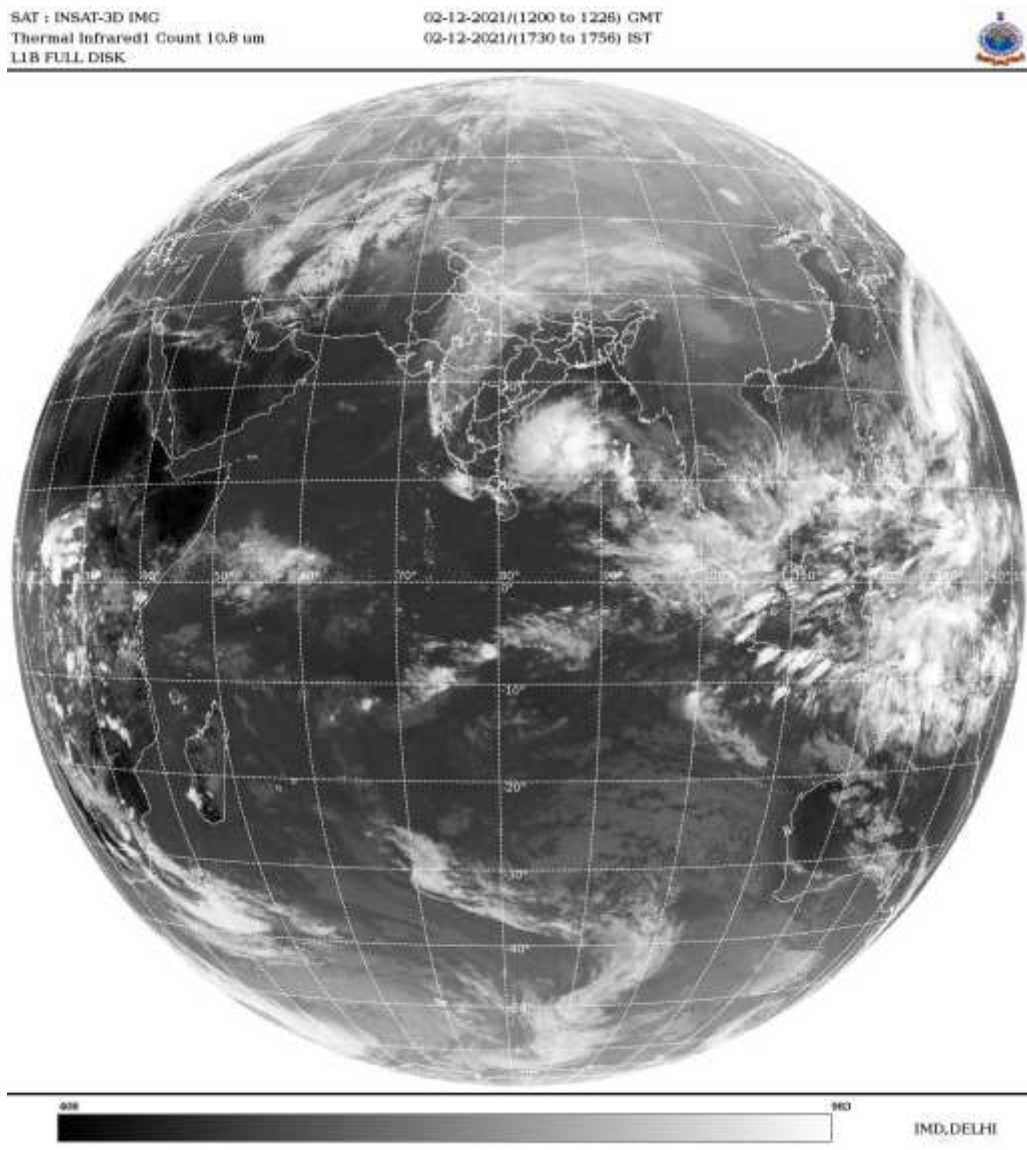
ARABIAN SEA:-

SCT LOW/MED CLOUDS WITH EMBDD MOD TO INT CONVTN OVER S KKN-GOA COAST AND ALSO OVER SE ARSEA OFF KER COAST (.)

BAY OF BENGAL & ANDAMAN SEA:-

SCT TO BKN LOW/MED CLOUDS WITH EMBDD INT TO V INT CONVTN OVER SE ADJ SW & CENTRAL BAY & CENTRAL ANDAMAN SEA (.) SCT LOW/MED CLOUDS WITH EMBDD MOD TO INT CONVTN OVER REST ANDAMAN SEA (.)

CLOUDS DESCRIPTION OUTSIDE INDIA:-



SCT LOW/MED CLOUDS WITH EMBDD MOD TO INT CONVTN OVER SRILANKA NEPAL TIBET ADJ CHINA S THAILAND SUMATRA STR OF MALACCA MALAYSIA SOUTH CHINA SEA BORNEO JAVA ILS & SEA CELEBES ILS & SEA PHILIPPINES SULU SEA AND OVER INDIAN OCEAN BET 3.0N TO 17.5S LONG 51.0E TO 120.0E (.)

TOO 02/1840EF=

NNNN

LEGEND:-

REGION	NORTH	J&K HP PJB HARY DLH UP UTRKND
	EAST	BHR JHRKND CHTGH ORS WB SKM NORTH- EAST STATES

	WEST	RAJ MP GUJ MAHA GOA
	SOUTH	TLNGN AP KRNTK KER TN LKSDP ANDAMAN & NICOBAR ILS

CLOUD DISTRIBUTION	ISOL	ISOLATED (LESS THAN 25%)	
	SCT	SCATTERED (25 TO 50%)	
	BKN	BROKEN (51 TO 75%)	
	SLD	SOLID (GREATER THAN 75%)	
CLOUDS TOP TEMPERATURE	CTT	CLOUD TOP TEMPERATURE	
CONVECTION	WK CONVTN	WEAK CONVECTION (CTT GREATER THAN -25°C)	
	MOD CONVTN	MODERATE CONVECTION (CTT BETWEEN -25°C TO -40°C)	
	INT CONVTN	INTENSE CONVECTION (CTT BETWEEN -41°C TO -70°C)	
	V INT CONVTN	VERY INTENSE CONVECTION (CTT LESS THAN -70°C)	
METEOROLOGICAL SUB-DIVISIONS, STATES & UNION TERRITORIES	ARUPR	ARUNACHAL PRADESH	
	BHR	BIHAR	
	CHTGH	CHHATTISGARH	
	COTL AP	COASTAL ANDHRA PRADESH	
	COTL KRNTK	COASTAL KARNATAKA	
	COTL ORS	COASTAL ORISSA	
	GUJ	GUJARAT	
	GWB	GANGETIC WEST BENGAL	
	HARY	HARYANA	
	DLH	DELHI	
	HP	HIMACHAL PRADESH	
	J&K	JAMMU AND KASHMIR	
	JHRKND	JHARKHAND	
	KER	KERALA	
	KKN	KONKAN	
	LKSDP	LAKSHADWEEP	
	M MAHA	MADHYA MAHARASHTRA	
	MAHA	MAHARASHTRA	
	MANI	MANIPUR	
	MEGHA	MEGHALAYA	
	MIZO	MIZORAM	
	MP	MADHYA PRADESH	
		MRTHWD	MARATHWADA
		NAGA	NAGALAND
N COTL AP		NORTH COASTAL ANDHRA PRADESH	
NIK		NORTH INTERIOR KARNATAKA	
ORS		ORISSA	
PJB		PUNJAB	
RAJ		RAJASTHAN	
RYLSM		RAYALASEEMA	

	SAU & KUTCH	SAURASHTRA & KUTCH
	SHWB	SUB-HIMALAYAN WEST BENGAL
	SIK	SOUTH INTERIOR KARNATAKA
	SKM	SIKKIM
	TLNGN	TELANGANA
	TN	TAMIL NADU
	TRP	TRIPURA
	UP	UTTAR PRADESH
	UTRKND	UTTARAKHAND
	VID	VIDHARBHA
	SHWB	SUB HIMALAYAN WEST BENGAL
	GWB	GANGETIC WEST BENGAL
	ARSEA	ARABIAN SEA
	ILS	ISLANDS
MISCELLANEOUS	ASSW	IN ASSOCIATION WITH
	ASSTD	ASSOCIATED
	LLC	LOW LEVEL CIRCULATION
	EMBDD	EMBEDDED
	N/HOOD	NEIGHBOURHOOD
	EXT	EXTREME