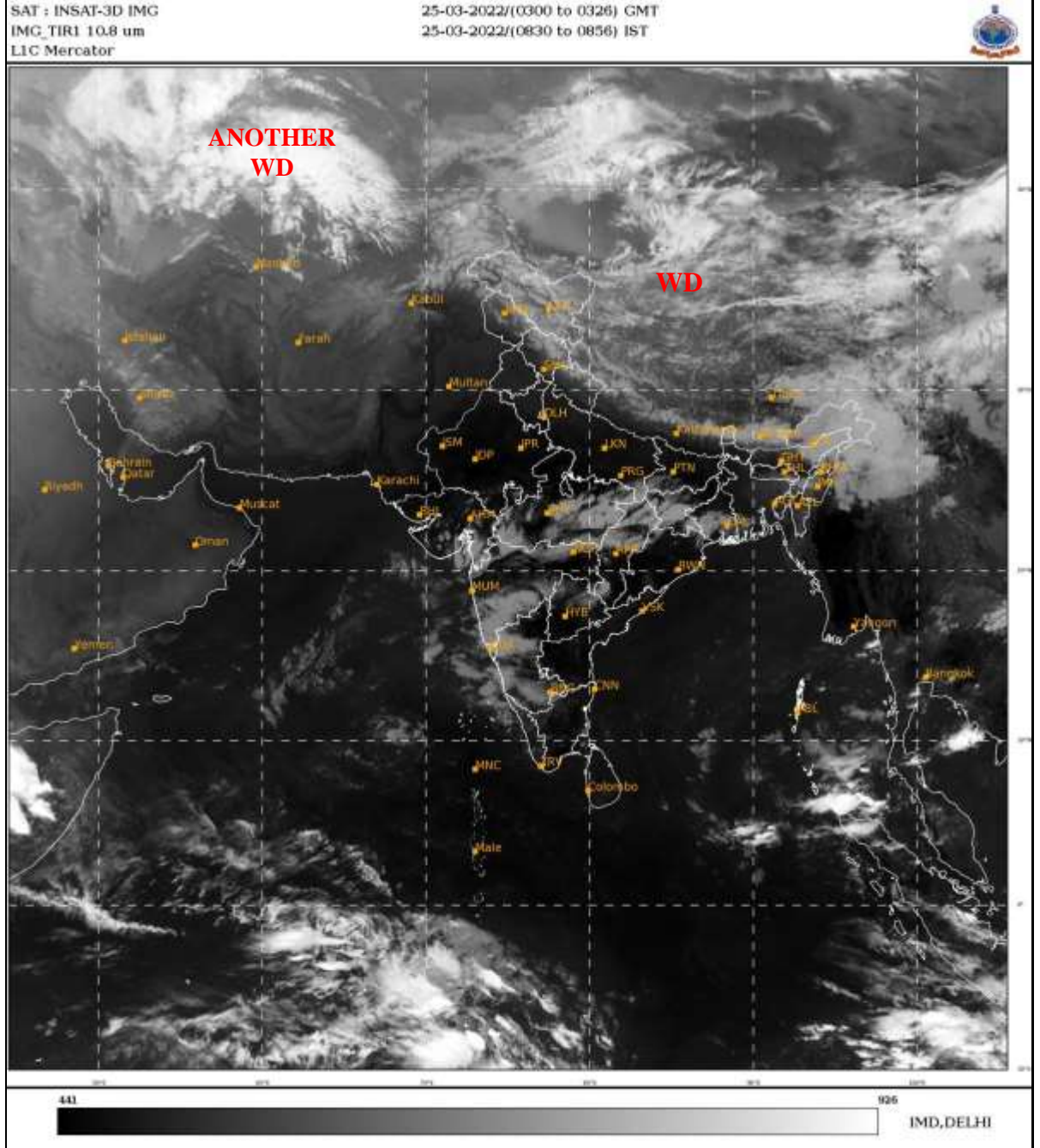




**SATELLITE BULLETIN BASED ON SATELLITE  
IMAGERIES AND PRODUCTS**  
**25.03.2022 TIME 0300 UTC**



TCIN50 DEMS 250300

SATELLITE BULLETIN BASED ON INSAT-3D PIC OF 250300 UTC (.)

REGION COVERED BETWEEN LAT 50.0°N TO 30.0°S AND LONG 40.0°E TO 125.0°E (.)

**SALIENT FEATURES:-**

**WESTERN DISTURBANCE (WD):-**

SCT MULTILAYERED CLOUDS OVER N TIBET ADJ CHINA IN ASSW **WD** OVER THE AREA (.)

SCT MULTILAYERED CLOUDS OVER CASPIAN SEA TURKMENISTAN AND N/HOOD IN ASSW **ANOTHER WD** OVER THE AREA (.)

**PRECIPITATION NOWCASTING:-**

**(BASED ON SCOPE NOWCASTING TOOL AT 0300 UTC AT A LEAD TIME OF 180 MINUTES):-**

RAINFALL NOT OBSERVED OVER INDIAN REGION (.)





INSAT-3DR 25-MAR-2022 02:45 WV IMG

WATER VAPOUR WIND

(1Kt = 0.5 m/s)

10 Kt

15 Kt

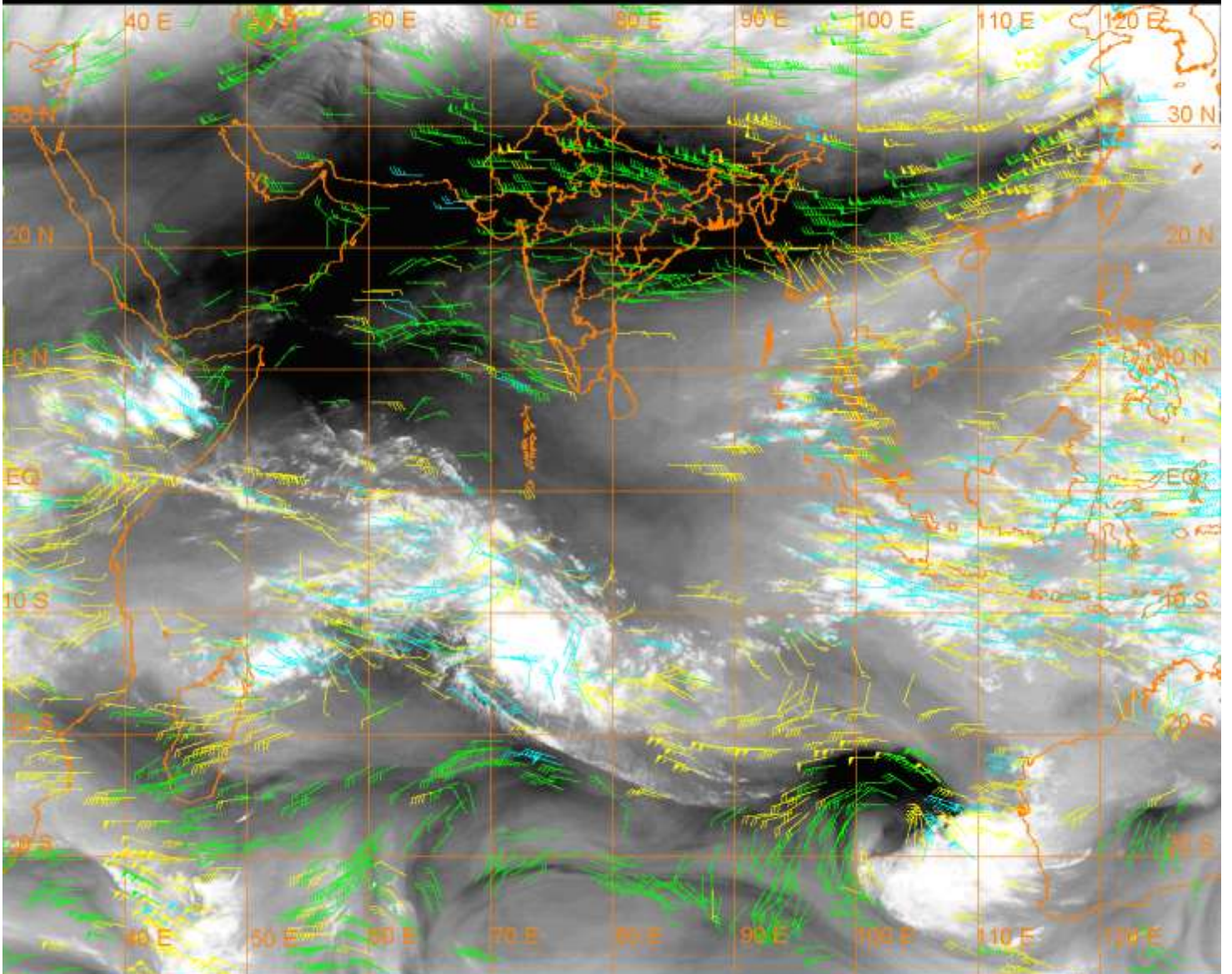
20 Kt

50 Kt

100-250 hPa

251-350 hPa

351-500 hPa



**CLOUDS DESCRIPTION WITHIN INDIA:-**

**NORTH:-**

SCT LOW/MED CLOUDS OVER LADAKH J&K HP UTRKND EXT S UP (.)

**EAST:-**

SCT LOW/MED CLOUDS WITH EMBDD WK TO MOD CONVTN OVER SKM ARUPR NE ASSAM NAGA CHTGH JHRKND S GWB (.) ISOL TO SCT LOW/MED CLOUDS OVER S BHR MEGHA REST ASSAM AND REST NE STATES (.)

**WEST:-**

SCT LOW/MED CLOUDS WITH EMBDD WK CONVTN OVER MP E GUJ S M MAHA S KKN & GOA (.) SCT LOW/MED CLOUDS OVER REST PARTS OF THE REGION EXCEPT N ADJ C RAJ (.)

**SOUTH:-**

SCT LOW/MED CLOUDS WITH EMBDD WK CONVTN OVER KRNTK & NICOBAR ILS (.) SCT LOW/MED CLOUDS OVER LKSDP & ANDAMAN ILS (.)

**ARABIAN SEA:-**

SCT LOW/MED CLOUDS WITH EMBDD WK CONVTN OVER EC ADJ SE ARSEA & GULF OF CAMBAY (.)

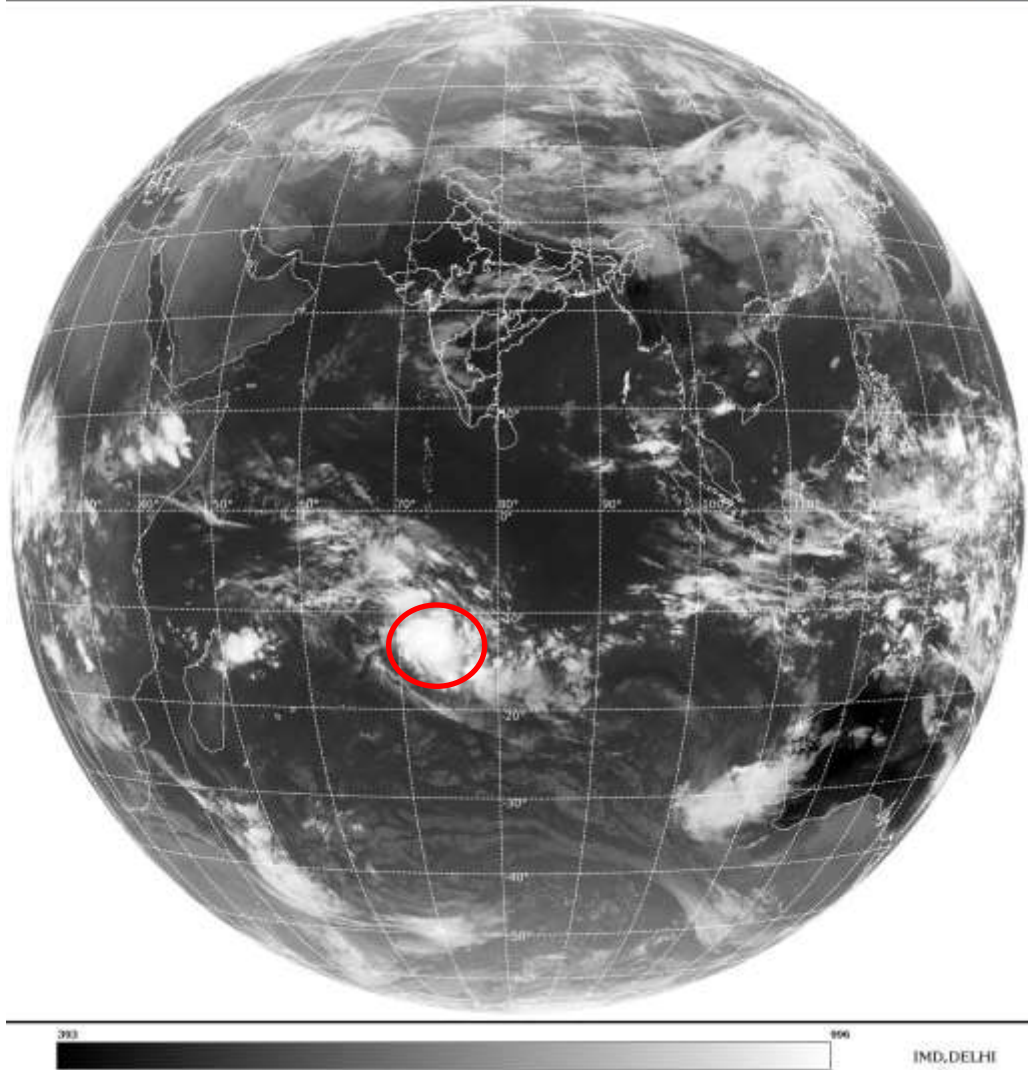
**BAY OF BENGAL & ANDAMAN SEA:-**

SCT LOW/MED CLOUDS WITH EMBDD MOD TO INT CONVTN OVER S ANDAMAN SEA AND ISOL WK TO MOD CONVTN OVER SE BAY (.)

**CLOUDS DESCRIPTION OUTSIDE INDIA:**

SAT : INSAT-3D IMG  
Thermal Infrared1 Count 10.8 um  
LIB FULL DISK

25-03-2022/(0300 to 0326) GMT  
25-03-2022/(0830 to 0856) IST



**VORTEX OVER SOUTH INDIAN OCEAN:-**

ANOTHER VORTEX (**HALIMA**) OVER SOUTH INDIAN OCEAN CENTERED NEAR **13.4S / 73.6E** (.) INTENSITY **T5.0/5.0** (.) ASSTD BKN LOW/MED CLOUDS WITH EMBDD INT TO V INT CONVTN OVER AREA BET LAT 10.0S TO 17.0S LONG 69.0E TO 76.0E (.)

SCT LOW/MED CLOUDS WITH EMBDD MOD TO INT CONVTN OVER N TIBET CHINA SE GULF OF THAILAND LAOS N VIETNAM GULF OF TONKIN HAINAN SUMATRA STR OF MALACCA MALAYSIA BORNEO JAVA ILS & SEA CELEBES ILS & SEA PHILIPPINES E CHINA SEA YELLOW SEA N MADAGASCAR AND OVER INDIAN OCEAN BET EQ TO LAT 20.0S LONG 50.0E TO 90.0E AND BET LAT 8.0S TO 30.0S LONG 100.0E TO 120.0E (.)

TOO 25/0945 HRS IST=

NNNN

**LEGEND:-**

|        |       |  |
|--------|-------|--|
| REGION | NORTH | J&K HP PJB HARY DLH UP UTRKND                        |
|        | EAST  | BHR JHRKND CHTGH OR WB SKM<br>NORTH- EAST STATES     |
|        | WEST  | RAJ MP GUJ MAHA GOA                                  |
|        | SOUTH | TLNGN AP KRNTK KER TN LKSDP<br>ANDAMAN & NICOBAR ILS |
|        | ISOL  | ISOLATED (LESS THAN 25%)                             |
|        | SCT   | SCATTERED (25 TO 50%)                                |

|   |                     |   |                   |
|---|---------------------|---|-------------------|
| <b>CLOUD DISTRIBUTION</b>   | <b>BKN</b>          | <b>BROKEN (51 TO 75%)</b>                                   |                   |
|   | <b>SLD</b>          | <b>SOLID (GREATER THAN 75%)</b>                             |                   |
| <b>CLOUDS TOP TEMPERATURE</b>                                       | <b>CTT</b>          | <b>CLOUD TOP TEMPERATURE</b>                                |                   |
| <b>CONVECTION</b>   | <b>WK CONVTN</b>    | <b>WEAK CONVECTION<br/>(CTT GREATER THAN -25°C)</b>         |                   |
|   | <b>MOD CONVTN</b>   | <b>MODERATE CONVECTION<br/>(CTT BETWEEN -25°C TO -40°C)</b> |                   |
|   | <b>INT CONVTN</b>   | <b>INTENSE CONVECTION<br/>(CTT BETWEEN -41°C TO -70°C)</b>  |                   |
|   | <b>V INT CONVTN</b> | <b>VERY INTENSE CONVECTION<br/>(CTT LESS THAN -70°C)</b>    |                   |
| <b>METEOROLOGICAL SUB-DIVISIONS, STATES &amp; UNION TERRITORIES</b> | <b>ARUPR</b>        | <b>ARUNACHAL PRADESH</b>                                    |                   |
|   | <b>BHR</b>          | <b>BIHAR</b>  |                   |
|   | <b>CHTGH</b>        | <b>CHHATTISGARH</b>   |                   |
|   | <b>COTL AP</b>      | <b>COASTAL ANDHRA PRADESH</b>                               |                   |
|   | <b>COTL KRNTK</b>   | <b>COASTAL KARNATAKA</b>                                    |                   |
|   | <b>COTL ORS</b>     | <b>COASTAL ORISSA</b>                                       |                   |
|   | <b>GUJ</b>          | <b>GUJARAT</b>  |                   |
|   | <b>GWB</b>          | <b>GANGETIC WEST BENGAL</b>                                 |                   |
|   | <b>HARY</b>         | <b>HARYANA</b>  |                   |
|   | <b>DLH</b>          | <b>DELHI</b>  |                   |
|   | <b>HP</b>           | <b>HIMACHAL PRADESH</b>                                     |                   |
|   | <b>J&amp;K</b>      | <b>JAMMU AND KASHMIR</b>                                    |                   |
|   | <b>JHRKND</b>       | <b>JHARKHAND</b>  |                   |
|   | <b>KER</b>          | <b>KERALA</b>   |                   |
|   | <b>KKN</b>          | <b>KONKAN</b>   |                   |
|   | <b>LKSDP</b>        | <b>LAKSHADWEEP</b>  |                   |
|   | <b>M MAHA</b>       | <b>MADHYA MAHARASHTRA</b>                                   |                   |
|   | <b>MAHA</b>         | <b>MAHARASHTRA</b>  |                   |
|   | <b>MANI</b>         | <b>MANIPUR</b>  |                   |
|   | <b>MEGHA</b>        | <b>MEGHALAYA</b>  |                   |
|   | <b>MIZO</b>         | <b>MIZORAM</b>  |                   |
|   | <b>MP</b>           | <b>MADHYA PRADESH</b>                                       |                   |
|   |                     | <b>MRTHWD</b>   | <b>MARATHWADA</b> |
|   |                     | <b>NAGA</b>   | <b>NAGALAND</b>   |
| <b>N COTL AP</b>  |                     | <b>NORTH COASTAL ANDHRA PRADESH</b>                         |                   |
| <b>NIK</b>  |                     | <b>NORTH INTERIOR KARNATAKA</b>                             |                   |
| <b>ORS</b>  |                     | <b>ORISSA</b>   |                   |
| <b>PJB</b>  |                     | <b>PUNJAB</b>   |                   |
| <b>RAJ</b>  |                     | <b>RAJASTHAN</b>  |                   |
| <b>RYLSM</b>  |                     | <b>RAYALASEEMA</b>  |                   |
| <b>SAU &amp; KUTCH</b>  |                     | <b>SAURASHTRA &amp; KUTCH</b>                               |                   |
| <b>SHWB</b>   |                     | <b>SUB-HIMALAYAN WEST BENGAL</b>                            |                   |
| <b>SIK</b>  |                     | <b>SOUTH INTERIOR KARNATAKA</b>                             |                   |
| <b>SKM</b>  |                     | <b>SIKKIM</b>   |                   |
| <b>TLNGN</b>  |                     | <b>TELANGANA</b>  |                   |
| <b>TN</b>   |                     | <b>TAMIL NADU</b>   |                   |

|                      |               |                                  |
|----------------------|---------------|----------------------------------|
|                      | <b>TRP</b>    | <b>TRIPURA</b>                   |
|                      | <b>UP</b>     | <b>UTTAR PRADESH</b>             |
|                      | <b>UTRKND</b> | <b>UTTARAKHAND</b>               |
|                      | <b>VID</b>    | <b>VIDHARBHA</b>                 |
|                      | <b>SHWB</b>   | <b>SUB HIMALAYAN WEST BENGAL</b> |
|                      | <b>GWB</b>    | <b>GANGETIC WEST BENGAL</b>      |
|                      | <b>ARSEA</b>  | <b>ARABIAN SEA</b>               |
|                      | <b>ILS</b>    | <b>ISLANDS</b>                   |
| <b>MISCELLANEOUS</b> | <b>ASSW</b>   | <b>IN ASSOCIATION WITH</b>       |
|                      | <b>ASSTD</b>  | <b>ASSOCIATED</b>                |
|                      | <b>LLC</b>    | <b>LOW LEVEL CIRCULATION</b>     |
|                      | <b>EMBDD</b>  | <b>EMBEDDED</b>                  |
|                      | <b>N/HOOD</b> | <b>NEIGHBOURHOOD</b>             |
|                      | <b>EXT</b>    | <b>EXTREME</b>                   |