



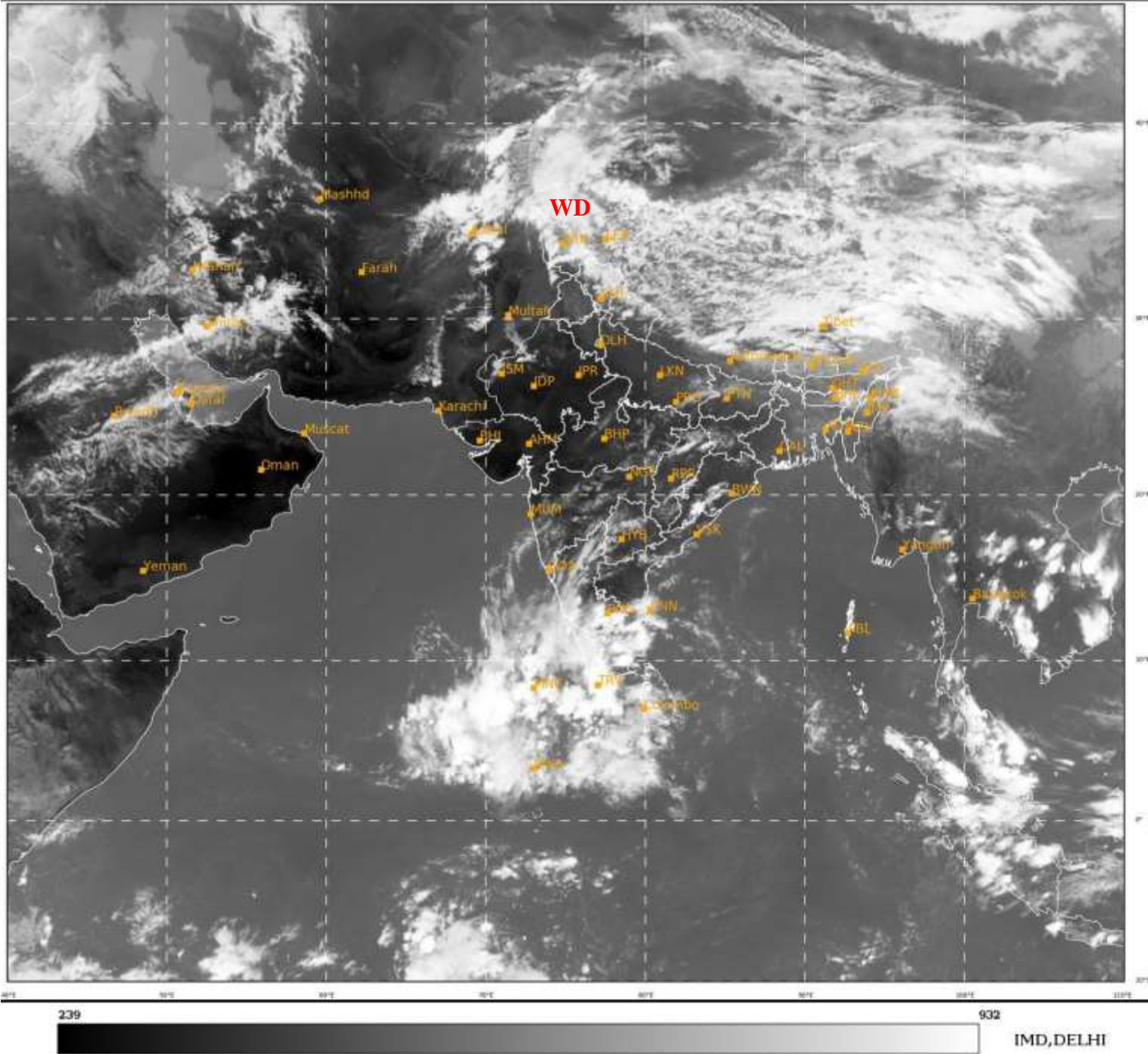
भारत मौसम विज्ञान विभाग
पृथ्वी विज्ञान मंत्रालय
India Meteorological Department
Ministry of Earth Sciences



**SATELLITE BULLETIN BASED ON SATELLITE
IMAGERIES AND PRODUCTS**
13.04.2022 TIME 0900 UTC

SAT : INSAT-3D IMG
IMG_TIR1 10.8 um
LIC Mercator

13-04-2022/(0900 to 0926) GMT
13-04-2022/(1430 to 1456) IST



TCIN50 DEMS 130900

SATELLITE BULLETIN BASED ON INSAT-3D PIC OF 130900 UTC (.)

REGION COVERED BETWEEN LAT 50.0°N TO 30.0°S AND LONG 40.0°E TO 125.0°E (.)

SALIENT FEATURES:-

WESTERN DISTURBANCE (WD):-

SCT MULTILAYERED CLOUDS OVER AFGAN N PAK LADAKH J&K HP UTRKND UP NEPAL
TIBBET ADJ CHINA IN ASSW **WD** OVER THE AREA (.)

THUNDERSTORM / CONVECTIVE ACTIVITIES:-

THUNDERSTORM / CONVECTIVE ACTIVITIES OBSERVED OVER SIK KER TN LKSDP ILS AREA
(.)

PRECIPITATION NOWCASTING:-

(BASED ON SCOPE NOWCASTING TOOL AT 0900 UTC AT A LEAD TIME OF 03 HRS (MM/HR) :-

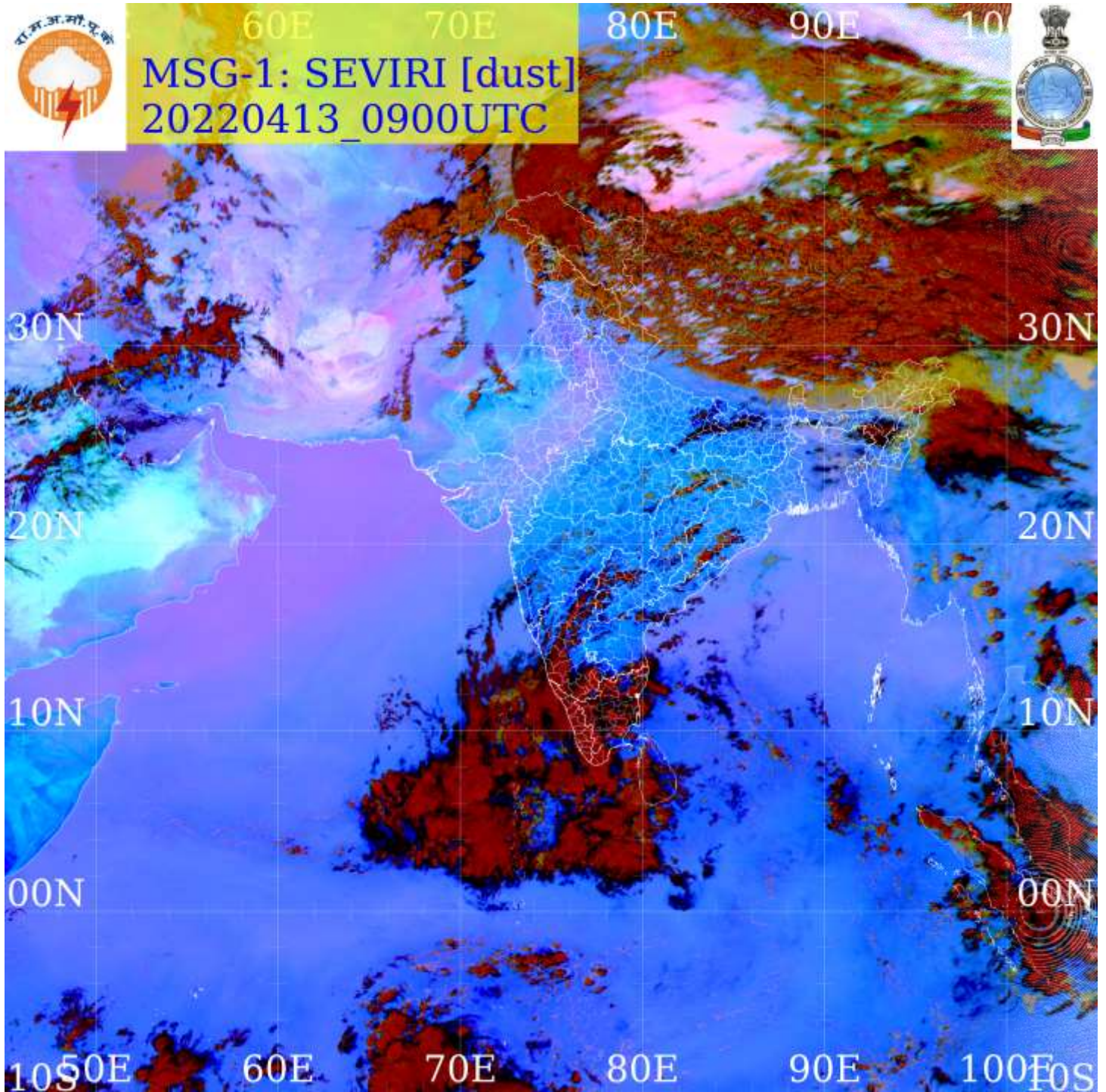
RAINFALL UPTO 15-20 MM OBSERVED OVER COTL TN S KER LKSDP ILS AREA (.)

RAINFALL UPTO 7-12 MM OBSERVED OVER N MEGHA ADJ S ASSAM N KER NW TN (.)

RAINFALL UPTO 2-7 MM OBSERVED OVER NW LADAKH E J&K N NAGA (.)

DUST:-

METESAT-8 RGB PRODUT INDICATE DUST AT 0900 UTC OVER E RAJ NE GUJ HARY DLH PJB (.)





INSAT-3DR 13-APR-2022 08:45 WV IMG

WATER VAPOUR WIND

(1Kt = 0.5 m/s)

10 Kt

15 Kt

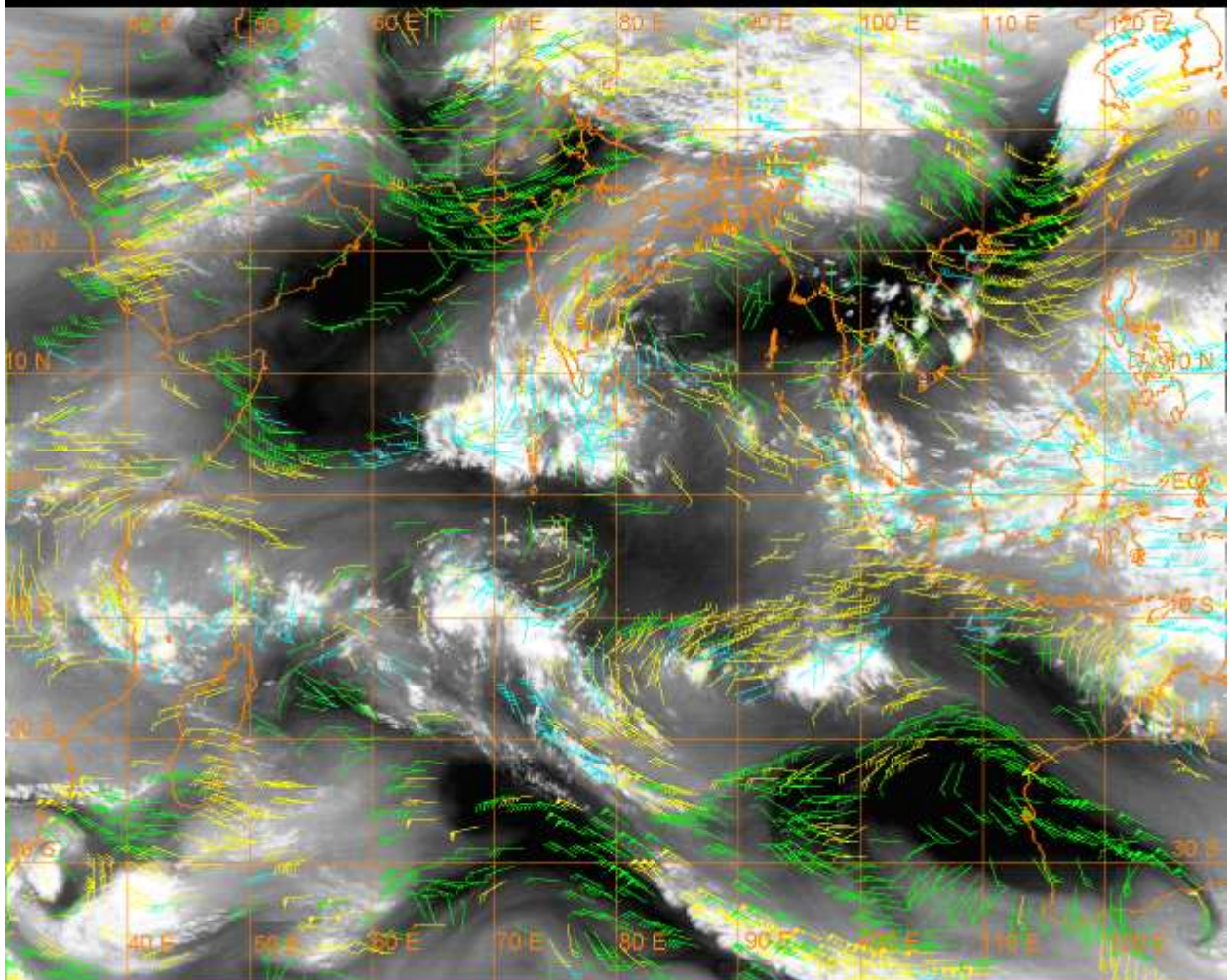
20 Kt

50 Kt

100-250 hPa

251-350 hPa

351-500 hPa



CLOUDS DESCRIPTION WITHIN INDIA:-

NORTH:-

SCT TO BKN LOW/MED CLOUDS WITH EMBDD MOD TO INT CONVTN OVER LADAKH J&K N HP
(.) SCT LOW/MED CLOUDS WITH EMBDD WK TO MOD CONVTN OVER S HP N UTRKND EC UP (.)
SCT LOW/MED CLOUDS OVER PJB S UTRKND (.)

EAST:-

SCT TO BKN LOW/MED CLOUDS WITH EMBDD MOD TO INT CONVTN OVER NC CHTGH S ORS
EXT N ARUPR EC ASSAM (.) SCT LOW/MED CLOUDS WITH EMBDD ISOL WK TO MOD CONVTN
OVER S CHTGH WC JHRKND NW BHR SKM REST ARUPR E MEGHA NAGA (.) ISOL TO SCT
LOW/MED CLOUDS OVER SHWB REST NE STATES (.)

WEST:-

SCT LOW/MED CLOUDS WITH EMBDD MOD TO INT CONVTN OVER EXT W RAJ (.) SCT
LOW/MED CLOUDS WITH EMBDD WK CONVTN OVER E MP MAHA (.) SCT LOW/MED CLOUDS
OVER REST N RAJ SW MP & GOA (.)

SOUTH:-

SCT TO BKN LOW/MED CLOUDS WITH EMBDD INT TO V INT CONVTN OVER S KER TN SE SIK
AND MOD TO INT CONVTN OVER N KER REST SIK LKSDP KER (.) SCT LOW/MED CLOUDS WITH
EMBDD WK TO MOD CONVTN OVER REST KRNTK N RYLSM S TLNGN COTL AP (.) SCT
LOW/MED CLOUDS OVER ANDAMAN & NICOBAR ILS (.)

ARABIAN SEA:-

SCT TO BKN LOW/MED CLOUDS WITH EMBDD INT TO V INT CONVTN OVER SE ARSEA OFF
KER COAST AND COMORIN AREA (.) SCT LOW/MED CLOUDS WITH EMBDD MOD TO INT
CONVTN OVER EC ARSEA OFF GOA-KRNTK COAST (.)

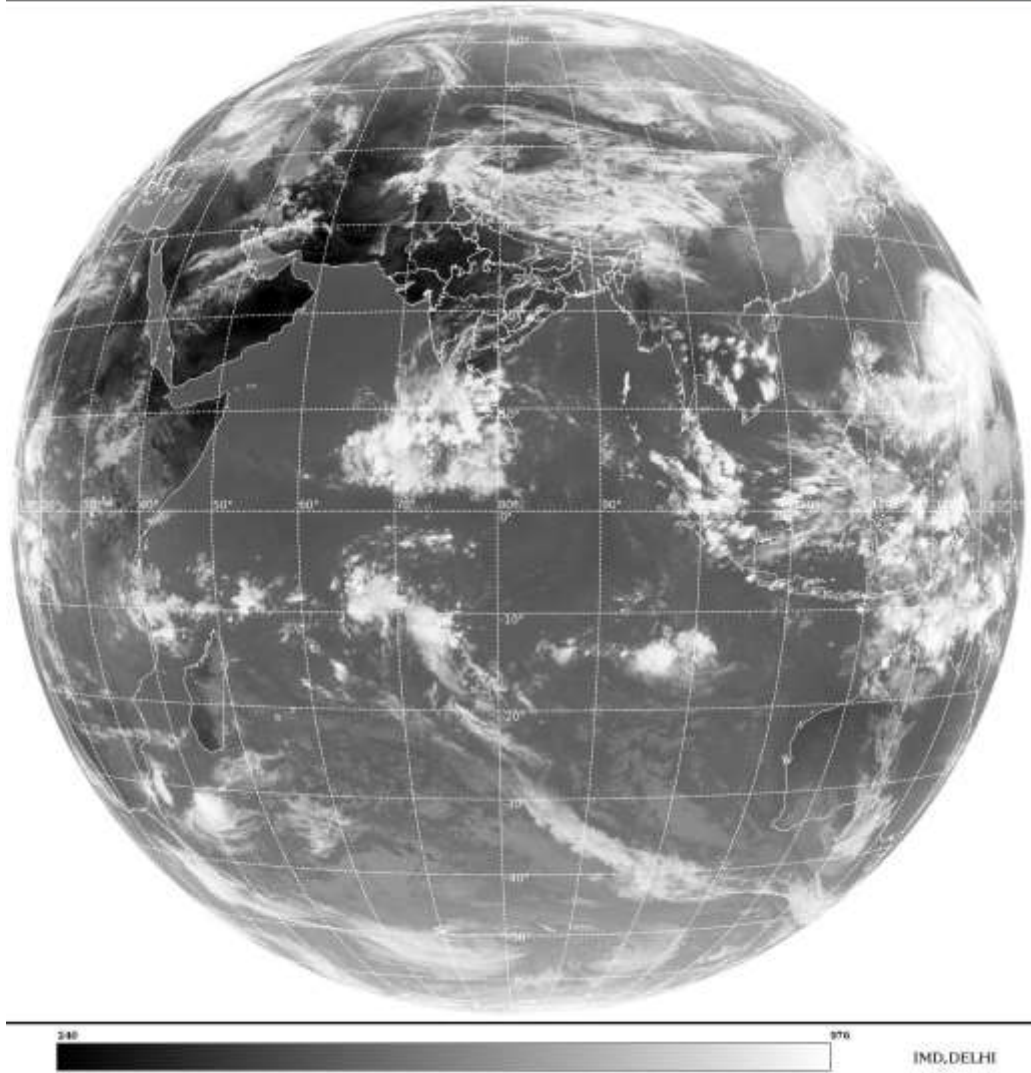
BAY OF BENGAL & ANDAMAN SEA:-

SCT LOW/MED CLOUDS WITH EMBDD MOD TO INT CONVTN OVER SW BAY OF TN COAST (.)
SCT LOW/MED CLOUDS WITH EMBDD WK TO MOD CONVTN OVER SE BAY (.)

CLOUDS DESCRIPTION OUTSIDE INDIA:-

SAT : INSAT-3D IMG
Thermal Infrared1 Count 10.8 um
LIB FULL DISK

13-04-2022/(0900 to 0926) GMT
13-04-2022/(1430 to 1456) IST



SCT LOW/MED CLOUDS WITH EMBDD MOD TO INT CONVTN OVER SRI LANKA PALK STR GULF OF MANNAR MALDIVES NEPAL TIBET CHINA YELLOW SEA N MYANMAR C LAOS ADJ VIETNAM SUMATRA STR OF MALACCA MALAYSIA BORNEO S CHINA SEA JAVA SEA CELEBES ILS & SEA PHILIPPINES SULU SEA MADAGASCAR MOZAMBIQUE CHANNEL AND OVER INDIAN OCEAN BET LAT 2.0N TO 23.0S LONG 40.0E TO 102.0E (.)

TOO 13/1540HRS IST=

NNNN

LEGEND:-

REGION	NORTH	J&K HP PJB HARY DLH UP UTRKND
	EAST	BHR JHRKND CHTGH OR WB SKM NORTH- EAST STATES
	WEST	RAJ MP GUJ MAHA GOA

	SOUTH	TLNGN AP KRNTK KER TN LKSDP ANDAMAN & NICOBAR ILS
--	--------------	--

CLOUD DISTRIBUTION	ISOL	ISOLATED (LESS THAN 25%)	
	SCT	SCATTERED (25 TO 50%)	
	BKN	BROKEN (51 TO 75%)	
	SLD	SOLID (GREATER THAN 75%)	
CLOUDS TOP TEMPERATURE	CTT	CLOUD TOP TEMPERATURE	
CONVECTION	WK CONVTN	WEAK CONVECTION (CTT GREATER THAN -25°C)	
	MOD CONVTN	MODERATE CONVECTION (CTT BETWEEN -25°C TO -40°C)	
	INT CONVTN	INTENSE CONVECTION (CTT BETWEEN -41°C TO -70°C)	
	V INT CONVTN	VERY INTENSE CONVECTION (CTT LESS THAN -70°C)	
METEOROLOGICAL SUB-DIVISIONS, STATES & UNION TERRITORIES	ARUPR	ARUNACHAL PRADESH	
	BHR	BIHAR	
	CHTGH	CHHATTISGARH	
	COTL AP	COASTAL ANDHRA PRADESH	
	COTL KRNTK	COASTAL KARNATAKA	
	COTL ORS	COASTAL ORISSA	
	GUJ	GUJARAT	
	GWB	GANGETIC WEST BENGAL	
	HARY	HARYANA	
	DLH	DELHI	
	HP	HIMACHAL PRADESH	
	J&K	JAMMU AND KASHMIR	
	JHRKND	JHARKHAND	
	KER	KERALA	
	KKN	KONKAN	
	LKSDP	LAKSHADWEEP	
	M MAHA	MADHYA MAHARASHTRA	
	MAHA	MAHARASHTRA	
	MANI	MANIPUR	
	MEGHA	MEGHALAYA	
	MIZO	MIZORAM	
	MP	MADHYA PRADESH	
		MRTHWD	MARATHWADA
		NAGA	NAGALAND
N COTL AP		NORTH COASTAL ANDHRA PRADESH	
NIK		NORTH INTERIOR KARNATAKA	
ORS		ORISSA	
PJB		PUNJAB	
RAJ		RAJASTHAN	
RYLSM		RAYALASEEMA	
SAU & KUTCH		SAURASHTRA & KUTCH	
SHWB		SUB-HIMALAYAN WEST BENGAL	

	SIK	SOUTH INTERIOR KARNATAKA
	SKM	SIKKIM
	TLNGN	TELANGANA
	TN	TAMIL NADU
	TRP	TRIPURA
	UP	UTTAR PRADESH
	UTRKND	UTTARAKHAND
	VID	VIDHARBHA
	SHWB	SUB HIMALAYAN WEST BENGAL
	GWB	GANGETIC WEST BENGAL
	ARSEA	ARABIAN SEA
	ILS	ISLANDS
MISCELLANEOUS	ASSW	IN ASSOCIATION WITH
	ASSTD	ASSOCIATED
	LLC	LOW LEVEL CIRCULATION
	EMBDD	EMBEDDED
	N/HOOD	NEIGHBOURHOOD
	EXT	EXTREME