

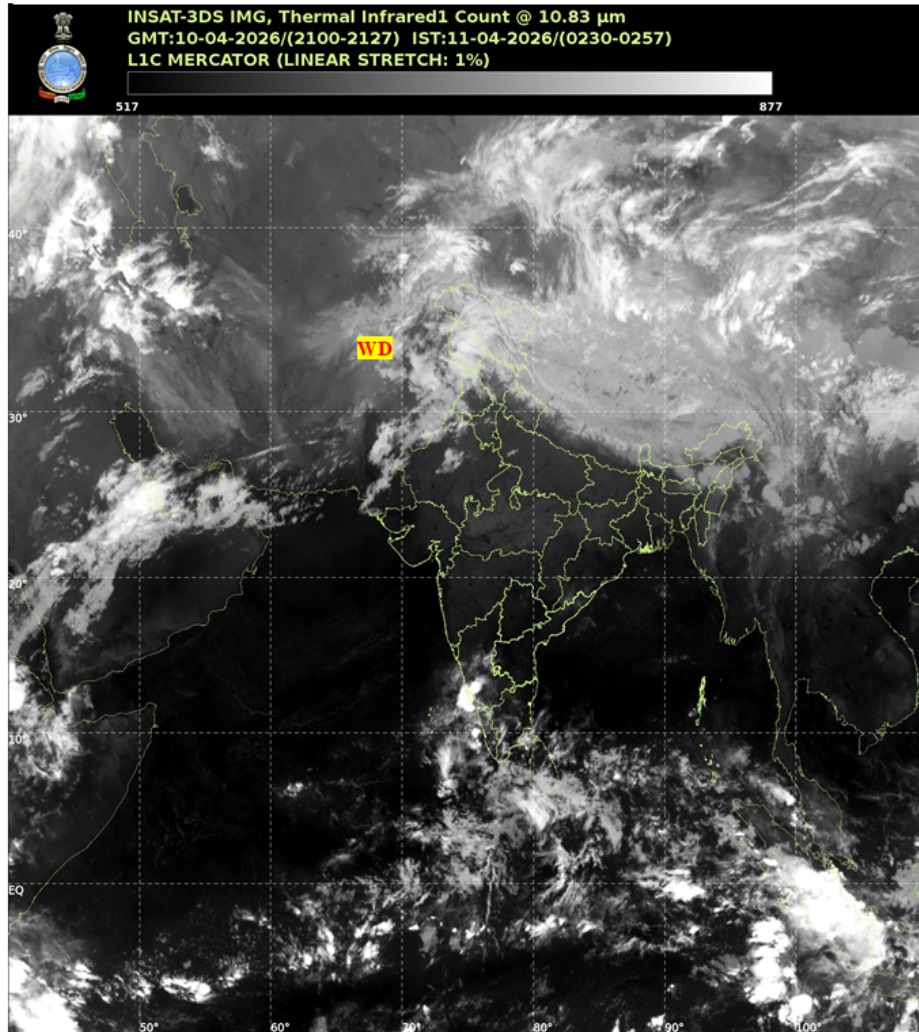


भारत मौसम विज्ञान विभाग  
पृथ्वी विज्ञान मंत्रालय  
India Meteorological Department  
Ministry of Earth Sciences



**SATELLITE BULLETIN BASED ON SATELLITE IMAGERIES AND PRODUCTS**

Date: 2026-04-10 Time: 21:00:00 UTC



TCIN50 DEMS 102100

SATELLITE BULLETIN BASED ON INSAT-3DS PIC OF 102100 UTC (.)

REGION COVERED BETWEEN LAT 50.0°N TO 35.0°S AND LONG 40.0°E TO 125.0°E (.)

**SALIENT FEATURES:**

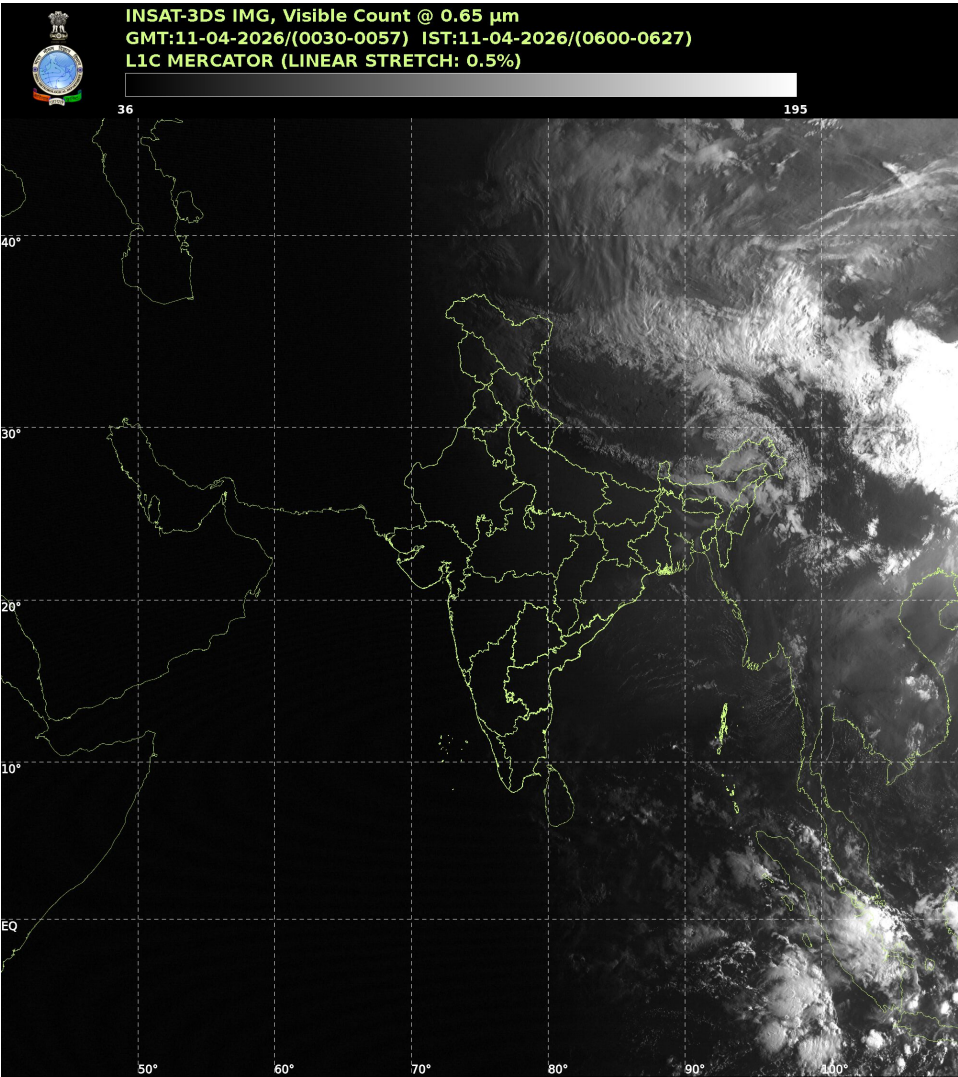
**WESTERN DISTURBANCE (WD):-**

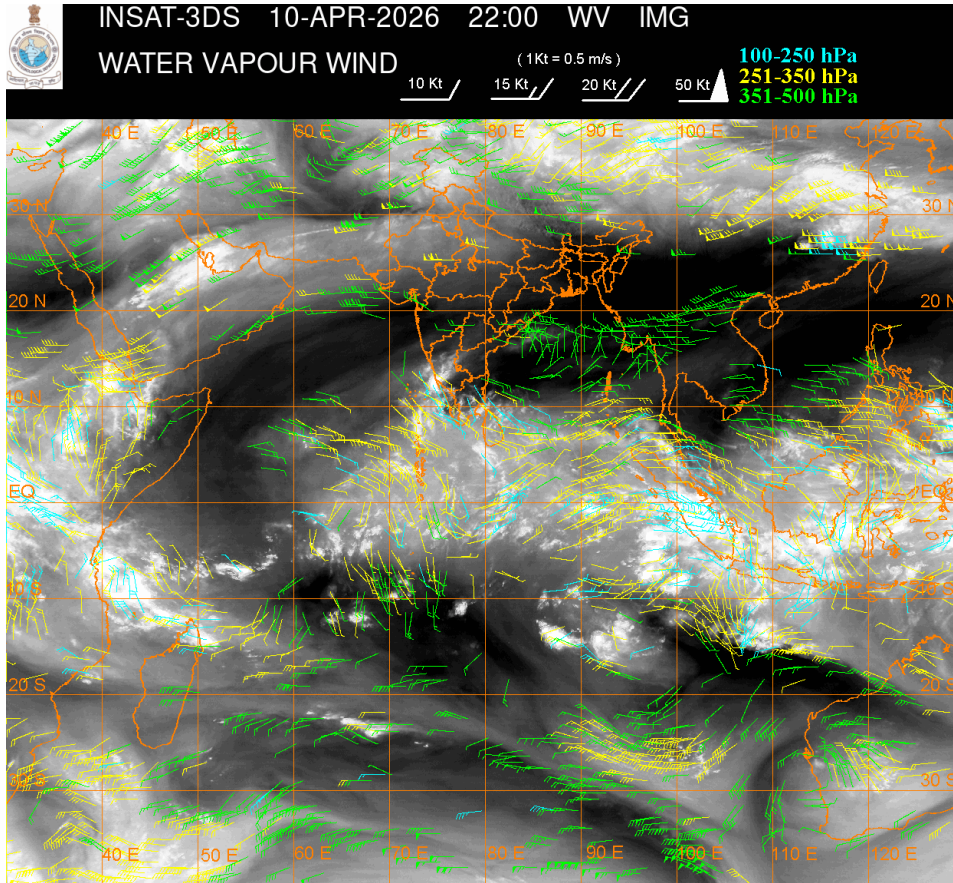
SCT MULTILAYERED CLOUDS OVER AFGAN IRAN PAK LADAKH J&K HP PJB N RAJ AND N/HOOD IN ASSW WD OVER THE AREA (.)

**CONVECTIVE / THUNDERSTORM ACTIVITY:-**

MODERATE TO INTENSE CONVECTIVE / THUNDERSTORM ACTIVITY OBSERVED OVER W LADAKH

J&K HP PJB N RAJ N KER SIK (MINIMUM CTT MINUS 40-60 DEGREE CEL) (.)





**CLOUD DESCRIPTION WITHIN INDIA:**

**NORTH:**

SCT LOW/MED CLOUDS WITH EMBDD MOD TO INT CONVTN OVER LADAKH J&K PJB HP NW HARY AND ISOL WK TO MOD CONVTN OVER N UTRKND C UP (.) SCT LOW/MED CLOUDS OVER S UTRKND DLH REST UP(.)

**EAST:**

SCT LOW/MED CLOUDS WITH EMBDD ISOL WK TO MOD CONVTN OVER SKM NE STATES (.) SCT LOW/MED CLOUDS OVER S CHTGH ORS SHWB (.)

**WEST:**

SCT LOW/MED CLOUDS WITH EMBDD WK CONVTN OVER N RAJ AND SCT LOW/MED CLOUDS OVER N GUJ (.)

**SOUTH:**

SCT LOW/MED CLOUDS WITH EMBDD MOD TO INT CONVTN OVER SIK N KER AND ISOL WK TO MOD CONVTN OVER TN RYLSM COTL KRNTK ANDAMAN & N ICOBAR ILS AREA (.) SCT LOW/MED CLOUDS OVER TLNGN N COTL AP & LKSDP ILS AREA(.)

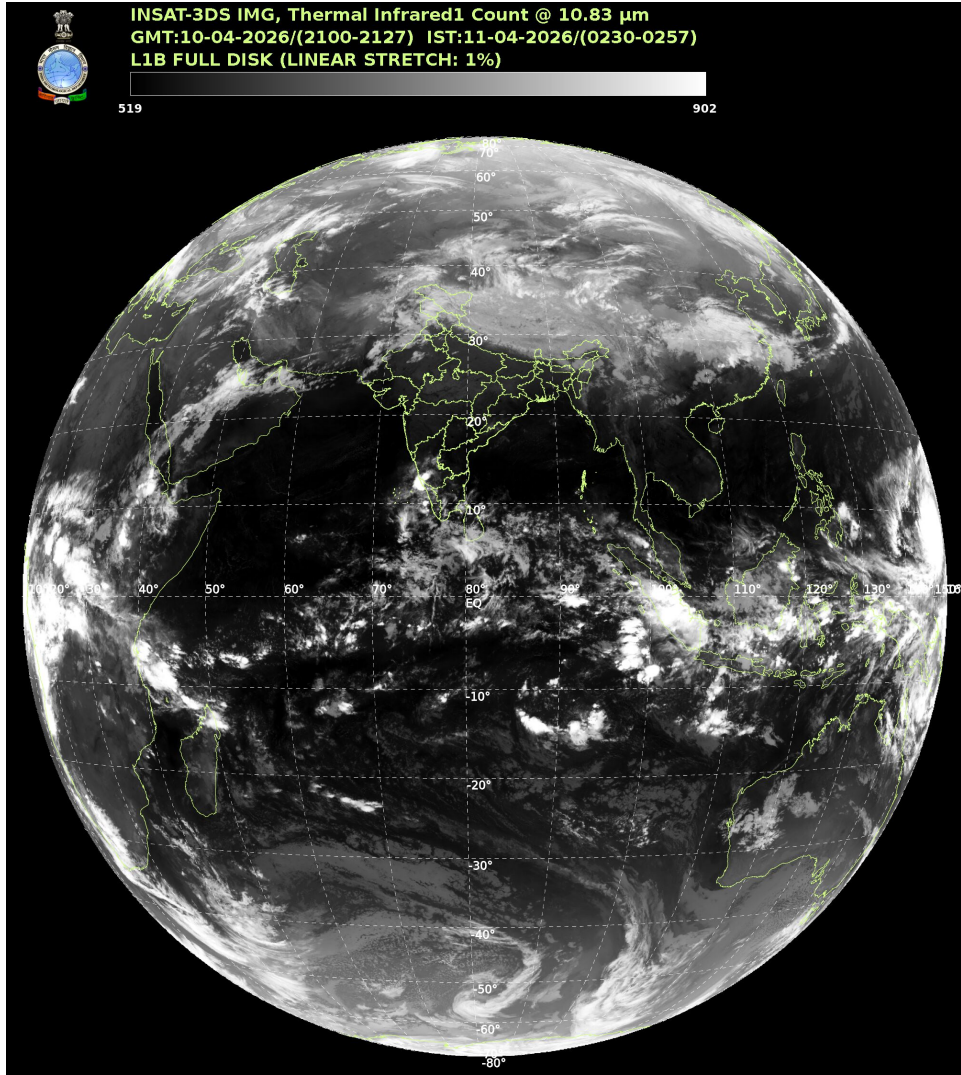
**ARABIAN SEA:**

SCT LOW/MED CLOUDS WITH EMBDD ISOL MOD TO INT CONVTN OVER NORTH ARSEA SE ARSEA & MALDIVES AREA (.)

**BAY OF BENGAL & ANDAMAN SEA:**

SCT LOW/MED CLOUDS WITH EMBDD INT TO V INT CONVTN OVER SOUTH BAY ADJ EQUATORIAL INDIAN OCEAN & SOUTH ANDAMAN SEA (.)

**CLOUD DESCRIPTION OUTSIDE INDIA:**



**SCT LOW/MED CLOUDS WITH EMBDD MOD TO INT CONVTN OVER MALDIVES AREA PAK TIBET CHINA EAST CHINA SEA NORTH MYANMAR SUMATRA STR OF MALACCA MALAYSIA BORNEO SOUTH CHINA SEA JAVA ILS & SEA CELEBES ILS & SEA AND OVER INDIAN OCEAN BET LAT 5.0N TO 20.0S LONG 40.0E TO 115.0E (.)**

**T00 11/0505 HRS IST**

**NNNN**

**LEGEND**

| REGION             |   |
|--------------------|---|
| NORTH              | J&K HP UTRKND PJB HARY DLH UP                     |
| EAST               | BHR JHRKND CHTGH ORS WB SKM NORTH-EAST STATES     |
| WEST               | RAJ MP GUJ MAHA GOA                               |
| SOUTH              | TLNGN AP KRNTK KER TN LKSDP ANDAMAN & NICOBAR ILS |
| CLOUD DISTRIBUTION |   |
| ISOL               | ISOLATED (LESS THAN 25%)                          |
| SCT                | SCATTERED (25 TO 50%)                             |

|   |   |
|---|---|
| <b>BKN</b>  | <b>BROKEN (51 TO 75%)</b>                               |
| <b>SLD</b>  | <b>SOLID (GREATER THAN 75%)</b>                         |
| <b>CLOUDS TOP TEMPERATURE</b>                                       |   |
| <b>CTT</b>  | <b>CLOUD TOP TEMPERATURE</b>                            |
| <b>CONVECTION</b>   |   |
| <b>WK CONVTN</b>  | <b>WEAK CONVECTION (CTT GREATER THAN -25°C)</b>         |
| <b>MOD CONVTN</b>   | <b>MODERATE CONVECTION (CTT BETWEEN -25°C TO -40°C)</b> |
| <b>INT CONVTN</b>   | <b>INTENSE CONVECTION (CTT BETWEEN -41°C TO -70°C)</b>  |
| <b>V INT CONVTN</b>   | <b>VERY INTENSE CONVECTION (CTT LESS THAN -70°C)</b>    |
| <b>METEOROLOGICAL SUB-DIVISIONS, STATES &amp; UNION TERRITORIES</b> |   |
| <b>J&amp;K</b>  | <b>JAMMU AND KASHMIR</b>                                |
| <b>HP</b>   | <b>HIMACHAL PRADESH</b>                                 |
| <b>UTRKND</b>   | <b>UTTARAKHAND</b>                                      |
| <b>PJB</b>  | <b>PUNJAB</b>   |
| <b>HARY</b>   | <b>HARYANA</b>  |
| <b>DLH</b>  | <b>DELHI</b>  |
| <b>BHR</b>  | <b>BIHAR</b>  |
| <b>JHRKND</b>   | <b>JHARKHAND</b>  |
| <b>CHTGH</b>  | <b>CHHATTISGARH</b>                                     |
| <b>ORS</b>  | <b>ORISSA</b>   |
| <b>GWB</b>  | <b>GANGETIC WEST BENGAL</b>                             |
| <b>SHWB</b>   | <b>SUB-HIMALAYAN WEST BENGAL</b>                        |
| <b>SKM</b>  | <b>SIKKIM</b>   |
| <b>ARUPR</b>  | <b>ARUNACHAL PRADESH</b>                                |
| <b>ASSAM</b>  | <b>ASSAM</b>  |
| <b>MEGHA</b>  | <b>MEGHALAYA</b>  |
| <b>MANI</b>   | <b>MANIPUR</b>  |
| <b>MIZO</b>   | <b>MIZORAM</b>  |
| <b>TRP</b>  | <b>TRIPURA</b>  |
| <b>RAJ</b>  | <b>RAJASTHAN</b>  |
| <b>MP</b>   | <b>MADHYA PRADESH</b>                                   |
| <b>GUJ</b>  | <b>GUJARAT</b>  |
| <b>SAU &amp; KUTCH</b>  | <b>SAURASHTRA &amp; KUTCH</b>                           |
| <b>MAHA</b>   | <b>MAHARASHTRA</b>                                      |

|                      |                                 |
|----------------------|---------------------------------|
| <b>M MAHA</b>        | <b>MADHYA MAHARASHTRA</b>       |
| <b>MRTHWD</b>        | <b>MARATHWADA</b>               |
| <b>VID</b>           | <b>VIDARBHA</b>                 |
| <b>KKN</b>           | <b>KONKAN</b>                   |
| <b>TLNGN</b>         | <b>TELANGANA</b>                |
| <b>RYLSM</b>         | <b>RAYALSEEMA</b>               |
| <b>COTL AP</b>       | <b>COASTAL ANDHRA PRADESH</b>   |
| <b>NIK</b>           | <b>NORTH INTERIOR KARNATAKA</b> |
| <b>SIK</b>           | <b>SOUTH INTERIOR KARNATAKA</b> |
| <b>COTL KRNTK</b>    | <b>COASTAL KARNATAKA</b>        |
| <b>KER</b>           | <b>KERALA</b>                   |
| <b>TN</b>            | <b>TAMILNADU</b>                |
| <b>LKSDP</b>         | <b>LAKSHADWEEP</b>              |
| <b>ILS</b>           | <b>ISLANDS</b>                  |
| <b>ARSEA</b>         | <b>ARABIAN SEA</b>              |
| <b>MISCELLANEOUS</b> |                                 |
| <b>ASSW</b>          | <b>IN ASSOCIATION WITH</b>      |
| <b>ASSTD</b>         | <b>ASSOCIATED</b>               |
| <b>LLC</b>           | <b>LOW LEVEL CIRCULATION</b>    |
| <b>EMBDD</b>         | <b>EMBEDDED</b>                 |
| <b>N/HOOD</b>        | <b>NEIGHBOURHOOD</b>            |
| <b>EXT</b>           | <b>EXTREME</b>                  |