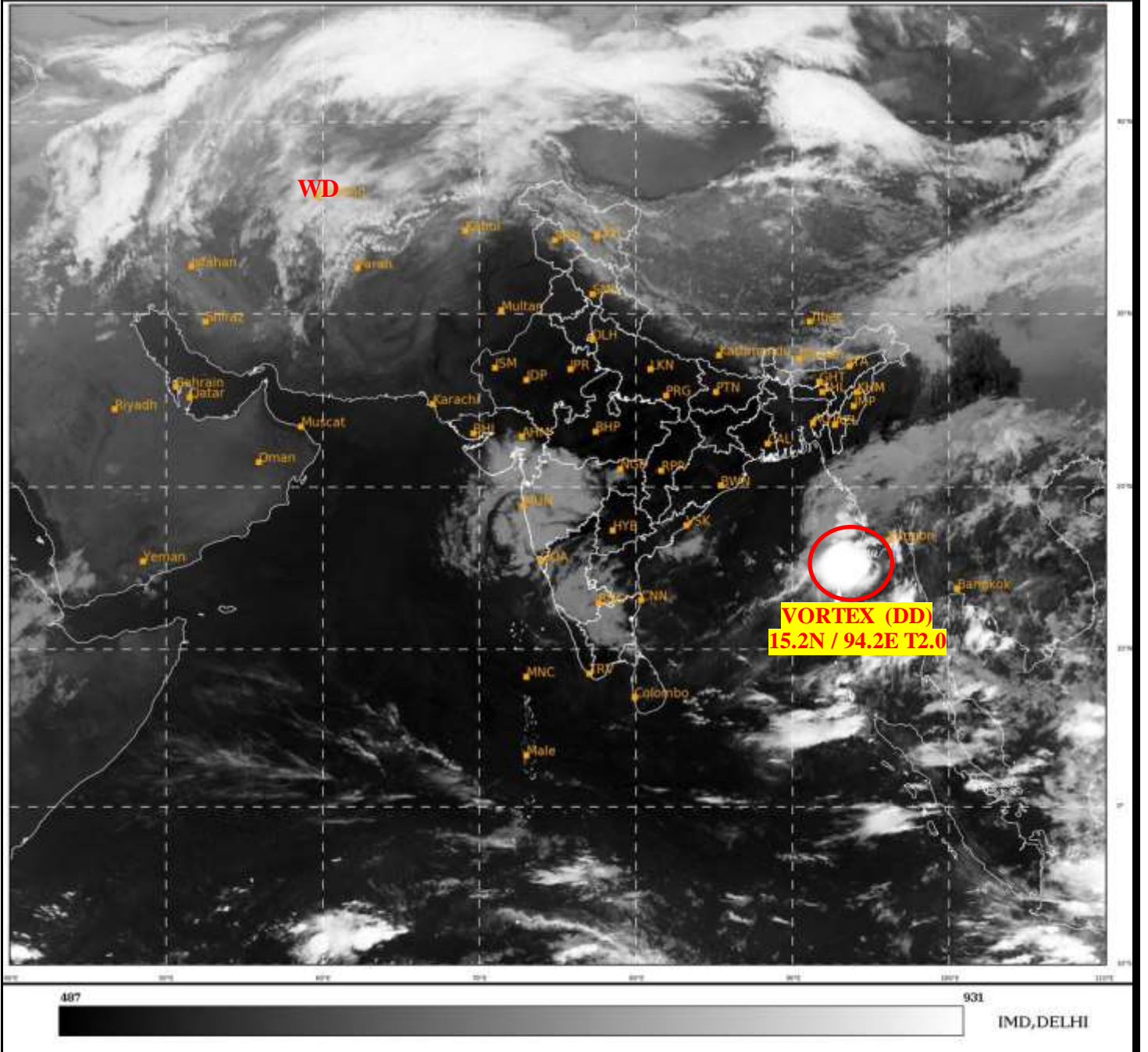




**SATELLITE BULLETIN BASED ON SATELLITE
IMAGERIES AND PRODUCTS**
22.03.2022 TIME 0300 UTC

SAT : INSAT-3D IMG
IMG_TIR1 10.8 um
LIC Mercator

22-03-2022/(0300 to 0327) GMT
22-03-2022/(0830 to 0857) IST



TCIN50 DEMS 220300

SATELLITE BULLETIN BASED ON INSAT-3D PIC OF 220300 UTC (.)

REGION COVERED BETWEEN LAT 50.0°N TO 30.0°S AND LONG 40.0°E TO 125.0°E (.)

SALIENT FEATURES:-

VORTEX (DEEP DEPRESSION) OVER NORTH ANDAMAN SEA ADJ EAST-CENTRAL BAY:-

VORTEX (DD) OVER NORTH ANDAMAN SEA ADJ EC BAY CENTERED **WITHIN HALF A DEGREE OF 15.2N / 94.2E** (.) INTENSITY **T2.0/2.0** (.) ASSTD BKN LOW/MED CLOUDS WITH EMBDD INT TO V INT CONVTN OVER NORTH ANDAMAN SEA ADJ EC BAY BET LAT 13.5N TO 17.0N LONG 91.0E TO 95.5E AND SOUTH MYANMAR COAST & ARANAN COAST (.) MINIMUM CTT MINUS **93** DEG C (.) SYSTEM MAINTAINED CLOUDS STRUCTURE DURING LAST 03 HRS (.)

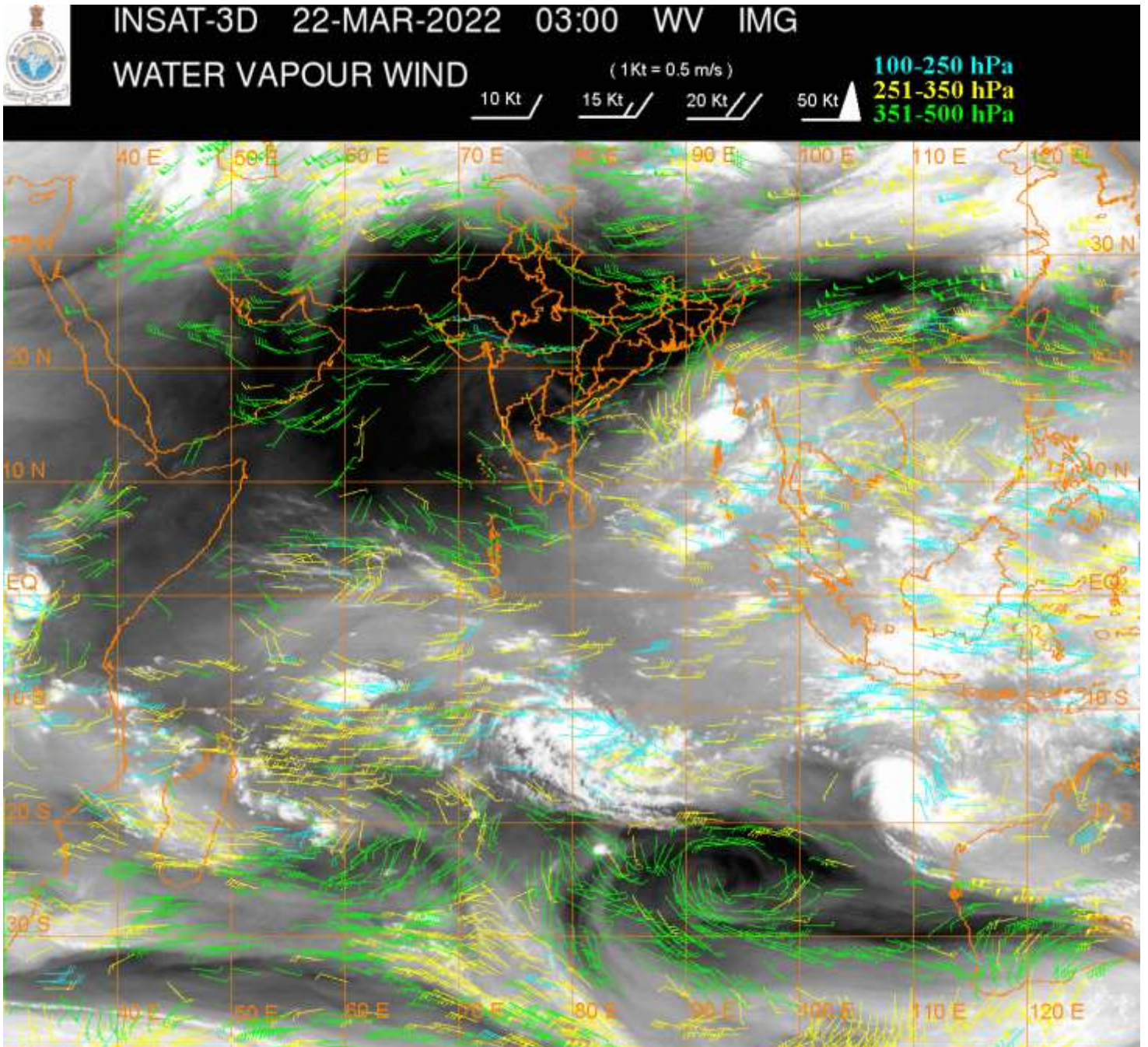
WESTERN DISTURBANCE (WD):-

SCT MULTILAYERED CLOUDS OVER CASPIAN SEA IRAN N AFGAN AND N/HOOD IN ASSW **WD** OVER THE AREA (.)

PRECIPITATION NOWCASTING:-

(BASED ON SCOPE NOWCASTING TOOL AT 0300 UTC IN A LEAD TIME OF 180 MINUTES):-

RAINFALL UPTO 0.25-0.50 MM OVER NICOBAR ILS (.)



CLOUDS DESCRIPTION WITHIN INDIA:-

NORTH:-

SCT LOW/MED CLOUDS WITH EMBDD ISOL WK CONVTN OVER LADAKH J&K (.) SCT LOW/MED CLOUDS OVER HP UTRKND (.)

EAST:-

SCT LOW/MED CLOUDS WITH EMBDD WK CONVTN OVER N SHWB SKM ARUPR EXT W ASSAM & SE BD (.) ISOL TO SCT LOW/MED CLOUDS OVER C CHTGH ORS JHRKND E BHR GWB S SHWB NE ASSAM N NAGA (.)

WEST:-

SCT LOW/MED CLOUDS WITH EMBDD WK CONVTN OVER SW MP S GUJ MAHA & GOA (.)

SOUTH:-

SCT LOW/MED CLOUDS WITH EMBDD MOD TO INT CONVTN OVER NICOBAR ILS (.) SCT LOW/MED CLOUDS WITH EMBDD WK CONVTN OVER RYLSM KRNTK N TN ANDAMAN ILS (.) SCT LOW/MED CLOUDS OVER TLNGN COTL AP N KER S TN LKSDP (.)

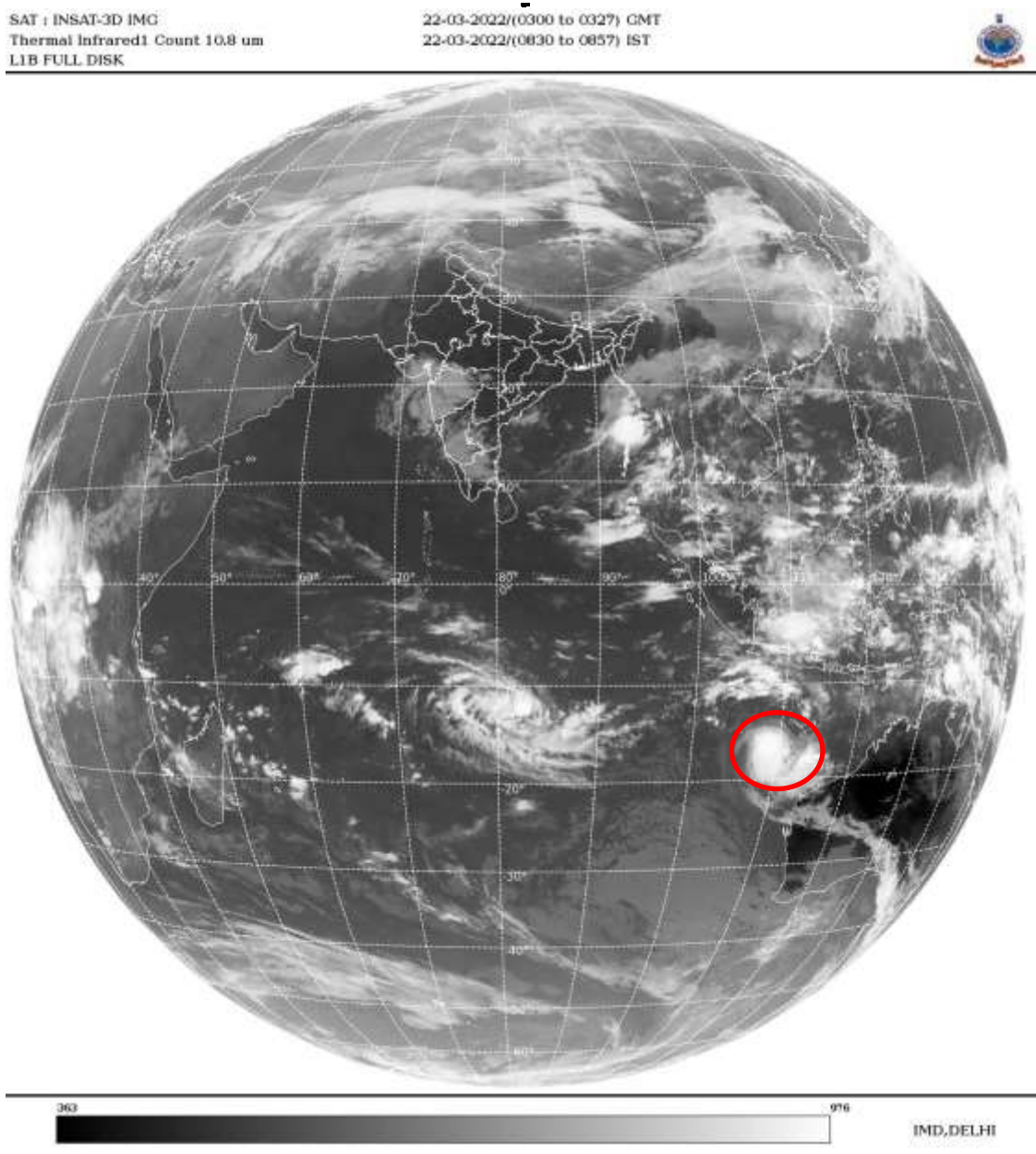
ARABIAN SEA:-

SCT LOW/MED CLOUDS WITH EMBDD WK CONVTN OVER GULF OF KUTCH & EC ARSEA EAST OF LONG 67.0E (.) SCT LOW/MED CLOUDS OVER SW ARSEA (.)

BAY OF BENGAL & ANDAMAN SEA:-

SCT TO BKN LOW/MED CLOUDS WITH EMBDD INT TO V INT CONVTN OVER N ANDAMAN SEA ADJ EC BAY BET LAT 13.5N TO 17.0N LONG 91.0E TO 95.0E (MINIMUM CTT MINUS 93 DEG C) (.)
SCT LOW/MED CLOUDS WITH EMBDD MOD TO INT CONVTN OVER SE BAY REST ANDAMAN SEA ARAKAN COAST AND ISOL WK TO MOD CONVTN OVER SW BAY REST C BAY & NE BAY (.)

CLOUDS DESCRIPTION OUTSIDE INDIA:



VORTEX (CHARLOTTE) OVER SOUTH INDIAN OCEAN:-

VORTEX (**CHARLOTTE**) OVER SOUTH INDIAN OCEAN CENTERED NEAR **17.0S / 109.4E** (.)
INTENSITY **T5.0/5.0** (.) ASSTD BKN LOW/MED CLOUDS WITH EMBDD INT TO V INT CONVTN
OVER AREA BET LAT 15.0S TO 20.0S LONG 107.0E TO 112.0E (.)

SCT LOW/MED CLOUDS WITH EMBDD MOD TO INT CONVTN OVER N TIBET CHINA S MYANMAR THAILAND GULF OF THAILAND CAMBODIA LAOS VIETNAM SUMATRA STR OF MALACCA MALAYSIA BORNEO S CHINA SEA JAVA ILS & SEA CELEBES ILS & SEA PHILIPPINES E CHINA SEA YELLOW SEA MADAGASCAR MOZAMBIQUE CHANNEL AND OVER INDIAN OCEAN BET LAT EQ TO 20.0S LONG 50.0E TO 118.0E (.)

TOO 22/0950 HRS IST=

NNNN

LEGEND:-

REGION	NORTH	J&K HP PJB HARY DLH UP UTRKND
	EAST	BHR JHRKND CHTGH OR WB SKM NORTH- EAST STATES
	WEST	RAJ MP GUJ MAHA GOA
	SOUTH	TLNGN AP KRNTK KER TN LKSDP ANDAMAN & NICOBAR ILS

CLOUD DISTRIBUTION	ISOL	ISOLATED (LESS THAN 25%)	
	SCT	SCATTERED (25 TO 50%)	
	BKN	BROKEN (51 TO 75%)	
	SLD	SOLID (GREATER THAN 75%)	
CLOUDS TOP TEMPERATURE	CTT	CLOUD TOP TEMPERATURE	
CONVECTION	WK CONVIN	WEAK CONVECTION (CTT GREATER THAN -25°C)	
	MOD CONVIN	MODERATE CONVECTION (CTT BETWEEN -25°C TO -40°C)	
	INT CONVIN	INTENSE CONVECTION (CTT BETWEEN -41°C TO -70°C)	
	V INT CONVIN	VERY INTENSE CONVECTION (CTT LESS THAN -70°C)	
METEOROLOGICAL SUB-DIVISIONS, STATES & UNION TERRITORIES	ARUPR	ARUNACHAL PRADESH	
	BHR	BIHAR	
	CHTGH	CHHATTISGARH	
	COTL AP	COASTAL ANDHRA PRADESH	
	COTL KRNTK	COASTAL KARNATAKA	
	COTL ORS	COASTAL ORISSA	
	GUJ	GUJARAT	
	GWB	GANGETIC WEST BENGAL	
	HARY	HARYANA	
	DLH	DELHI	
	HP	HIMACHAL PRADESH	
	J&K	JAMMU AND KASHMIR	
	JHRKND	JHARKHAND	
	KER	KERALA	
	KKN	KONKAN	
	LKSDP	LAKSHADWEEP	
	M MAHA	MADHYA MAHARASHTRA	
	MAHA	MAHARASHTRA	
	MANI	MANIPUR	
	MEGHA	MEGHALAYA	
	MIZO	MIZORAM	
	MP	MADHYA PRADESH	
		MRTHWD	MARATHWADA
		NAGA	NAGALAND

	N COTL AP	NORTH COASTAL ANDHRA PRADESH
	NIK	NORTH INTERIOR KARNATAKA
	ORS	ORISSA
	PJB	PUNJAB
	RAJ	RAJASTHAN
	RYLSM	RAYALASEEMA
	SAU & KUTCH	SAURASHTRA & KUTCH
	SHWB	SUB-HIMALAYAN WEST BENGAL
	SIK	SOUTH INTERIOR KARNATAKA
	SKM	SIKKIM
	TLNGN	TELANGANA
	TN	TAMIL NADU
	TRP	TRIPURA
	UP	UTTAR PRADESH
	UTRKN	UTTARAKHAND
	VID	VIDHARBHA
	SHWB	SUB HIMALAYAN WEST BENGAL
	GWB	GANGETIC WEST BENGAL
	ARSEA	ARABIAN SEA
	ILS	ISLANDS
MISCELLANEOUS	ASSW	IN ASSOCIATION WITH
	ASSTD	ASSOCIATED
	LLC	LOW LEVEL CIRCULATION
	EMBDD	EMBEDDED
	N/HOOD	NEIGHBOURHOOD
	EXT	EXTREME