



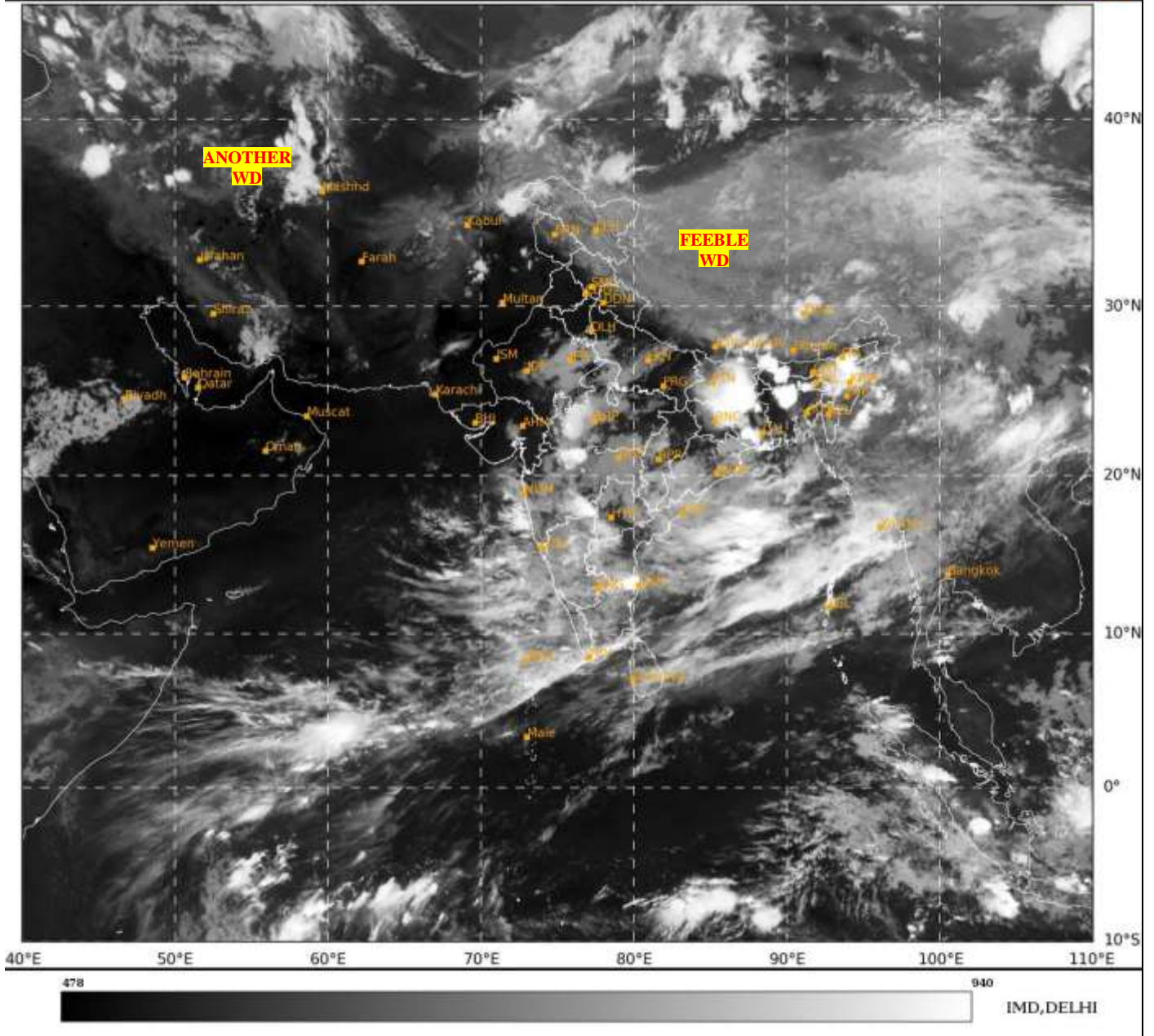
भारत मौसम विज्ञान विभाग
पृथ्वी विज्ञान मंत्रालय
India Meteorological Department
Ministry of Earth Sciences



**SATELLITE BULLETIN BASED ON SATELLITE
IMAGERIES AND PRODUCTS**
12.06.2024 TIME 1800 UTC

SAT : INSAT-3D IMG
IMG_TIR1 10.8 um
LIC Mercator

12-06-2024/(1730 to 1756) GMT
12-06-2024/(2300 to 2326) IST



TCIN50 DEMS 121800

SATELLITE BULLETIN BASED ON INSAT-3D PIC OF 121700 UTC (.)

REGION COVERED BETWEEN LAT 50.0°N TO 35.0°S AND LONG 30.0°E TO 125.0°E (.)

SALIENT FEATURES:-

WESTERN DISTURBANCE:-

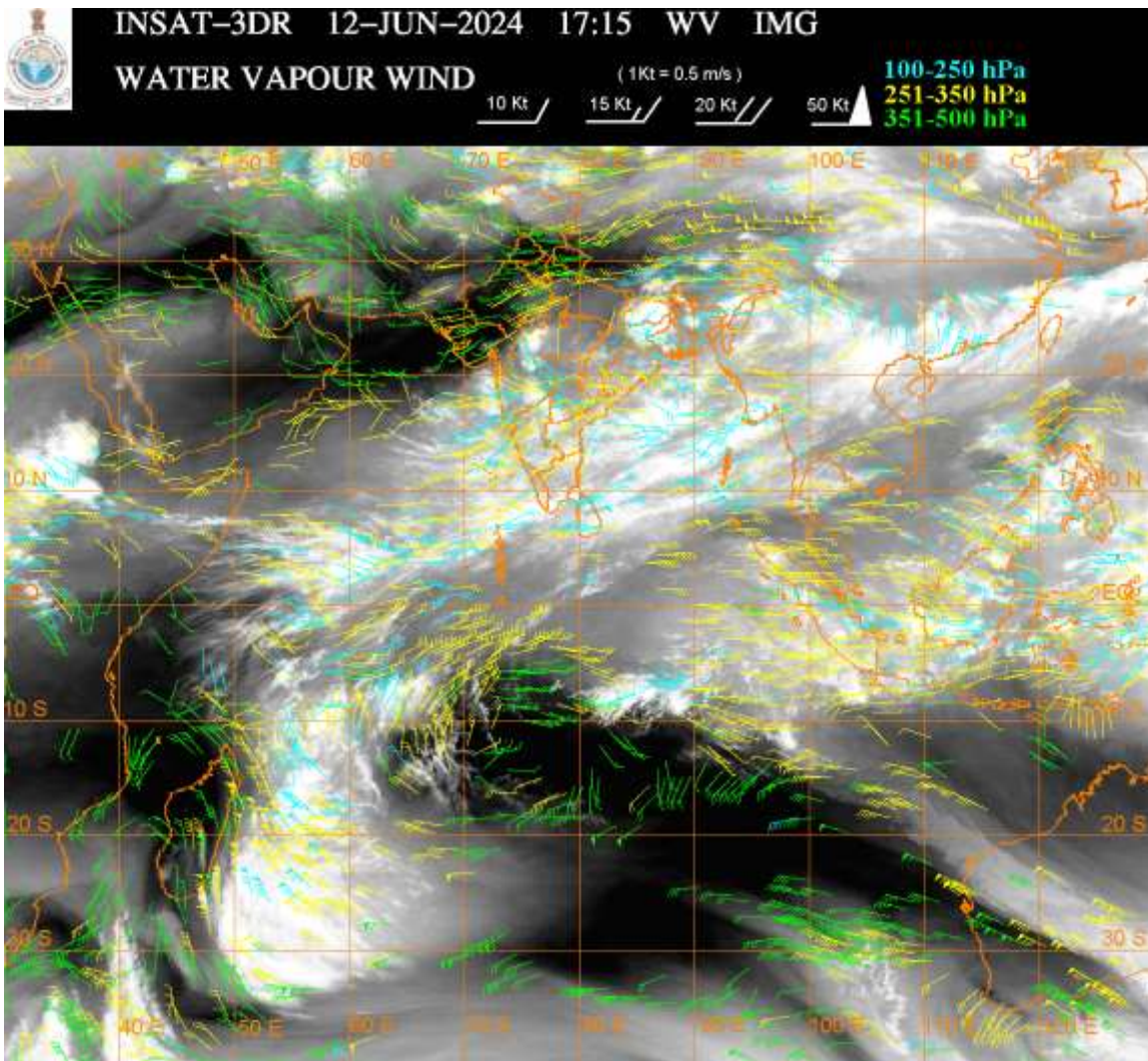
SCT MULTILAYERED CLOUDS OVER TIBET CHINA & N/HOOD IN ASSW **FEEBLE WD** OVER THE AREA (.)

SCT MULTILAYERED CLOUDS OVER CASPIAN SEA ADJ IRAN AND N/HOOD IN ASSW **ANOTHER WD** OVER THE AREA (.)

CONVECTIVE / THUNDERSTORM ACTIVITY:-

INTENSE TO VERY INTENSE CONVECTIVE / THUNDERSTORM ACTIVITY OVER NE JHRKND SE BHR N GWB NORTH SHWB MEGHA NE ASSAM (.)

MODERATE TO INTENSE CONVECTIVE / THUNDERSTORM ACTIVITY OVER NAGA SW MP M MAHA S MRTHWD S TLNGN ANDAMAN ILS AREA (.)



CLOUDS DESCRIPTION WITHIN INDIA:-

NORTH:-

SCT LOW/MED CLOUDS WITH EMBDD WK TO MOD CONVTN OVER LADAKH N HP N UTRKND SW UP (.) ISOL TO SCT LOW/MED CLOUDS OVER J&K S HP S UTRKND SE HARY SE UP (.)

EAST:-

SCT LOW/MED CLOUDS WITH EMBDD INT TO V INT CONVTN OVER E BHR NE JHRKND GWB NORTH SHWB MEGHA N ASSAM NAGA AND MOD TO INT CONVTN OVER SKM N MANI (.) SCT LOW/MED CLOUDS WITH EMBDD WK TO MOD CONVTN OVER W BHR CHTGH ORS SOUTH SHWB REST NE STATES (.)

WEST:-

SCT LOW/MED CLOUDS WITH EMBDD MOD TO INT CONVTN OVER SW MP NORTH M MAHA SOUTH MRTHWD (.) SCT LOW/MED CLOUDS WITH EMBDD ISOL WK TO MOD CONVTN OVER E RAJ REST MP C GUJ REST MAHA GOA (.) SCT LOW/MED CLOUDS OVER REST GUJ (.)

SOUTH:-

SCT LOW/MED CLOUDS WITH EMBDD INT TO V INT CONVTN OVER NE NIK NE TN (.) SCT TO BKN LOW/MED CLOUDS WITH EMBDD MOD TO INT CONVTN OVER SW TLNGN RYLSM REST KRNTK S KER REST TN LKSDP ILS AND WK TO MOD CONVTN OVER REST TLNGN COTL AP N KER ANDAMAN NICOBAR ILS AREA ILS (.)

ARABIAN SEA:-

SCT LOW/MED CLOUDS WITH EMBDD MOD TO INT CONVTN OVER EC & SE ARSEA LKSDP ILS AREA (.) SCT LOW/MED CLOUDS WITH EMBDD ISOL WK TO MOD CONVTN OVER SW ARSEA (.)

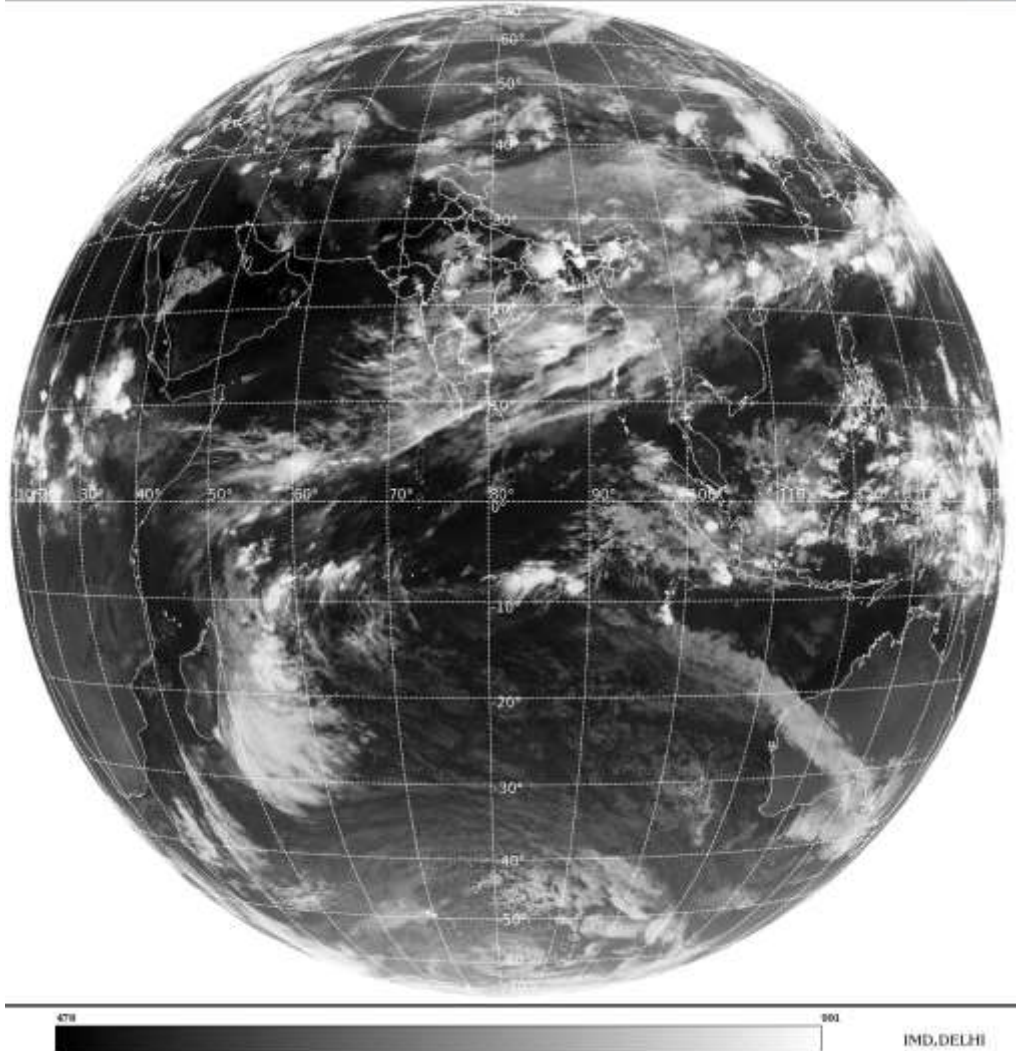
BAY OF BENGAL & ANDAMAN SEA:-

SCT TO BKN LOW/MED CLOUDS WITH EMBDD INT TO V INT CONVTN OVER CENTRAL BAY (MINIMUM CTT MINUS 80-93 DEG CEL) (.) SCT LOW/MED CLOUDS WITH EMBDD MOD TO INT CONVTN OVER REST BAY & N ANDAMAN SEA (.)

CLOUDS DESCRIPTION OUTSIDE INDIA:-

SAT : INSAT-3D IMG
Thermal Infrared1 Count 10.8 um
LIB FULL DISK

12-06-2024/(1730 to 1756) GMT
12-06-2024/(2300 to 2326) IST



SCT LOW/MED CLOUDS WITH EMBDD MOD TO INT CONVTN OVER SRILANKA N MALDIVES BHUTAN TIBET CHINA YELLOW SEA EAST CHINA SEA MYANMAR THAILAND GULF OF THAILAND LAOS N VIETNAM TAIWAN SUMATRA STR OF MALACCA MALAYSIA BORNEO JAVA ILS & SEA CELEBES ILS & SEA PHILIPPINES SULU SEA AND OVER INDIAN OCEAN BET LAT 5.0N TO 10.0S LONG 50.0E TO 110.0E AND BET LAT 10.0S TO 35.0S LONG 47.0E TO 70.0E (.)

TOO 12/2350 HRS IST=

NNNN

LEGEND:-

REGION	NORTH	J&K HP PJB HARY DLH UP UTRKND
	EAST	BHR JHRKND CHTGH ORS WB SKM NORTH- EAST STATES
	WEST	RAJ MP GUJ MAHA GOA
	SOUTH	TLNGN AP KRNTK KER TN LKSDP ANDAMAN & NICOBAR ILS
CLOUD DISTRIBUTION	ISOL	ISOLATED (LESS THAN 25%)
	SCT	SCATTERED (25 TO 50%)
	BKN	BROKEN (51 TO 75%)
	SLD	SOLID (GREATER THAN 75%)
CLOUDS TOP TEMPERATURE	CTT	CLOUD TOP TEMPERATURE

CONVECTION	WK CONVTN	WEAK CONVECTION (CTT GREATER THAN -25°C)
	MOD CONVTN	MODERATE CONVECTION (CTT BETWEEN -25°C TO -40°C)
	INT CONVTN	INTENSE CONVECTION (CTT BETWEEN -41°C TO -70°C)
	V INT CONVTN	VERY INTENSE CONVECTION (CTT LESS THAN -70°C)
METEOROLOGICAL SUB- DIVISIONS, STATES & UNION TERITORIES	ARUPR	ARUNACHAL PRADESH
	BHR	BIHAR
	CHTGH	CHHATTISGARH
	COTL AP	COASTAL ANDHRA PRADESH
	COTL KRNTK	COASTAL KARNATAKA
	COTL ORS	COASTAL ORISSA
	GUJ	GUJARAT
	GWB	GANGETIC WEST BENGAL
	HARY	HARYANA
	DLH	DELHI
	HP	HIMACHAL PRADESH
	J&K	JAMMU AND KASHMIR
	JHRKND	JHARKHAND
	KER	KERALA
	KKN	KONKAN
	LKSDP	LAKSHADWEEP
	M MAHA	MADHYA MAHARASHTRA
	MAHA	MAHARASHTRA
	MANI	MANIPUR
	MEGHA	MEGHALAYA
	MIZO	MIZORAM
	MP	MADHYA PRADESH
	MRTHWD	MARATHWADA
	NAGA	NAGALAND
	N COTL AP	NORTH COASTAL ANDHRA PRADESH
	NIK	NORTH INTERIOR KARNATAKA
	ORS	ORISSA
	PJB	PUNJAB
RAJ	RAJASTHAN	
RYLSM	RAYALSEEMA	
SAU & KUTCH	SAURASHTRA & KUTCH	
SHWB	SUB-HIMALAYAN WEST BENGAL	
SIK	SOUTH INTERIOR KARNATAKA	
SKM	SIKKIM	
TLNGN	TELANGANA	
TN	TAMIL NADU	
TRP	TRIPURA	
UP	UTTAR PRADESH	
UTRKND	UTTRAKHAND	
VID	VIDARBHA	

	SHWB	SUB HIMALAYAN WEST BENGAL
	GWB	GANGETIC WEST BENGAL
	ARSEA	ARABIAN SEA
	ILS	ISLANDS
MISCELLANEOUS	ASSW	IN ASSOCIATION WITH
	ASSTD	ASSOCIATED
	LLC	LOW LEVEL CIRCULATION
	EMBDD	EMBEDDED
	N/HOOD	NEIGHBOURHOOD
	EXT	EXTREME